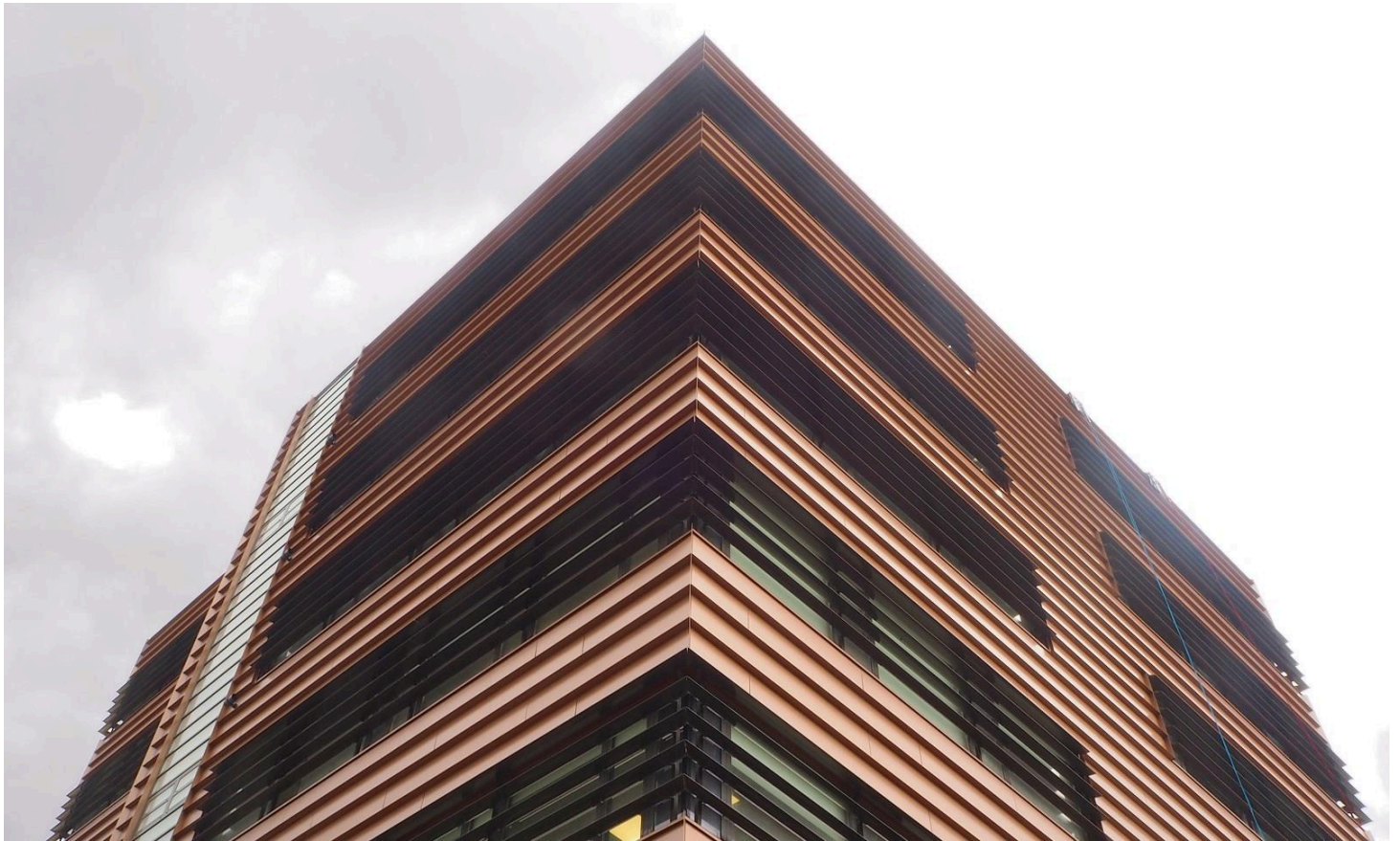


UPS

Sandwich panels were used for the walls of both the industrial hall and the office parts. The exterior wall of the office building has been clad with copper-coloured special steel lamellas, with a raised lower edge. Ruukki supplied both the sandwich panels and the façade lamellas.



Related products

> [Cladding Lamella Sharp 45](#)

Partners

- > Customer: Skubios siuntos, UAB
- > Construction company: Kaminta, UAB
- > Architect: Felita Kozlovaitė, UAB Kita kryptis



In this building we have used **GreenCoat®** - A Nordic quality sustainable steel from SSAB.



[Read more about about GreenCoat® here](#)

UPS ASC commissioned new premises in Kaunas next to the road to the airport. The new building comprises a single-storey industrial hall and a seven-storey office building. Sandwich panels were used for the walls of both the industrial hall and the office parts. The exterior wall of the office building has been clad with copper-coloured special steel lamellas, with a raised lower edge. Ruukki supplied both the sandwich panels and the façade lamellas.

“It makes sense to use the same supplier for the sandwich panels and claddings. The colour of the wall then makes the building look coherent,” says managing director Vaidotas Lasas at UPS ASC.

“Ruukki has a wide range of products. These products are lasting and still look good as the years pass. We know we can rely on the products and Ruukki’s customer service saves us time and helps us in our own work,” enthuses architect Felita Kozlovaite.



