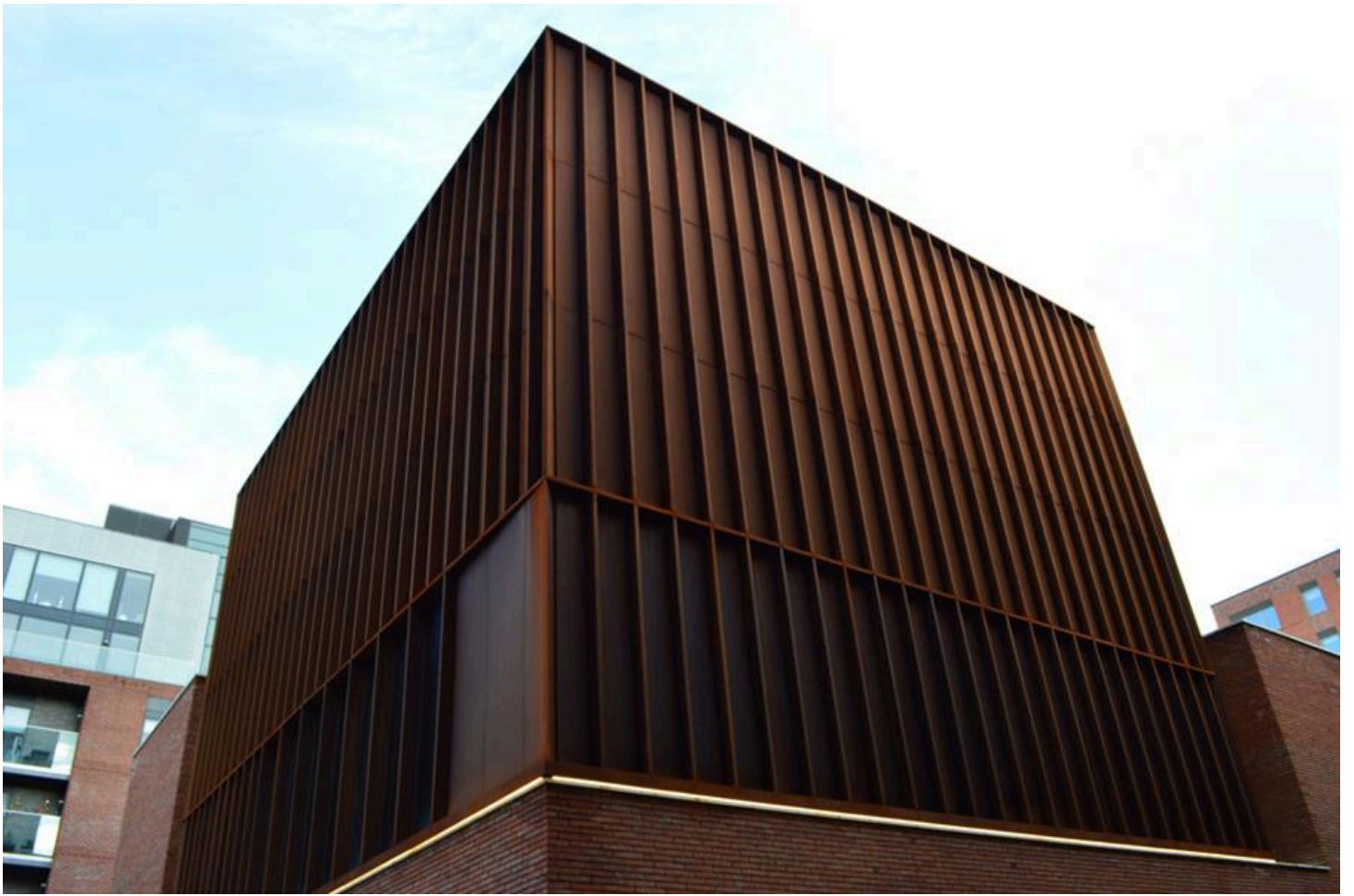


## Hallé, St Peter's Greater Manchester

Ruukki panels have been supplied to a restored church to create a new home for the famous The Hallé orchestra. The three-storey extension at The Oglesby Centre is part of a wider project to regenerate the Ancoats area of Manchester, which is historically an area of manufacturing. The Hallé's new home for its community work in the centre of Manchester is used by schools and youth groups. It offers multiple spaces in one venue for different rehearsals and to deliver a real sense of community with new practice rooms, performance spaces, and a café and bar which are open to the public. We supplied our Ruukki Cor-Ten® Rainscreen Cladding panels for this project for an impressive finish that's been shortlisted for the Façade Awards UK.



## Related products

- > Liberta Cor-Ten 700
- > Bespoke systems



Ruukki supplied Liberta Cor-Ten® rainscreen panels for this project for an impressive finish that's been shortlisted for the Façade Awards UK.

Creating a new home for The Hallé involved adapting a former church in an old industrial area of Manchester. It was necessary to find a material that will be in line with existing old buildings and at the same time will be durable, modern and aesthetic. Cor-Ten® steel, which forms a protective patina layer, turned out to be the best choice.

