

# Sandwich panel SPA I for internal wall

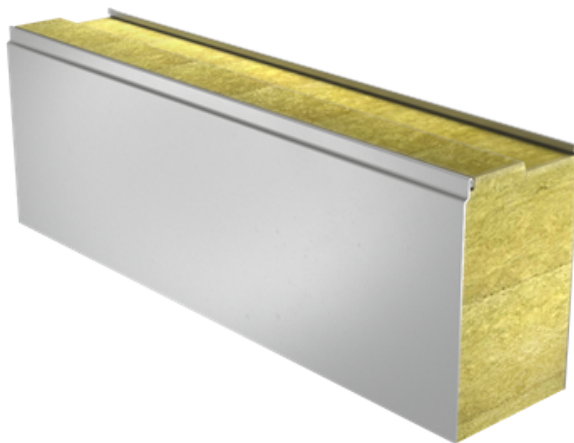
Sandwich panel **SPA I** is available in thicknesses 100 - 150 mm.

This product, made with the use of advanced production processes, offers optimal performance of the designed solution.

With the filling consisting of non-combustible and environmentally friendly hard mineral wool, this sandwich panel ensures excellent fire resistance. Properly milled core increases air-tightness and contributes to outstanding sound insulation.

## Application:

- Internal walls



**SEND CONTACT REQUEST**

# Properties

Model name	Sandwich panel SPA I for internal wall
Standard module width	1200 mm
Minimum length	2000 mm
Maximum Length	13500 mm
External facing thickness	0.5 mm
Internal facing thickness	0.5 mm

Thickness D (mm)	100	125	150
Weight (kg/m <sup>2</sup> )	17.4	20	22.4
U-value (W/m <sup>2</sup> K)	0.40	0.31	0.26
Sound insulation Rw (dB)	29	30	30
Reaction to fire	A2-s1, d0	A2-s1, d0	A2-s1, d0
GWP-total, A1-A3 (kg CO <sub>2</sub> ◇/m <sup>2</sup> )	29,5	30,5	31,4
Estimated GWP (A1-A3) for Ruukki® LowCarbon (kg CO <sub>2</sub> e/m <sup>2</sup> )*	-	-	-

Wall fire resistance values & max span horizontal / vertical orientation (m):	100	125	150
EI 30	7.5 / 7.5	7.5 / 7.5	9.0 / 8.8
EI 30 (stainless steel)	-	-	7.5 / -
EI 60	7.5 / 7.5	7.5 / 7.5	9.0 / 8.8
EI 60 (stainless steel)	-	-	7.5 / -
EI 90	4.0 / 6.0	7.5 / 7.5	7.5 / 8.8
EI 90 (stainless steel)	-	-	6.0 / -
EI 120	-	7.5 / 7.5	7.5 / 7.5
EI 180	-	-	4.0 / -

Detailed information regarding the application of fire resistance ratings can be obtained from Ruukki Sales.

All properties are declared in accordance with EN 14509 and related standards.

## Coatings and colors

### Materials

Facing	Coating	Corrosivity category	UV resistance	Colours
Internal	Polyester	C3	-	RR20
Internal	Foodsafe Laminate*	C4	-	White
Internal	Stainless steel*	C4	-	-

*\*) optional material*

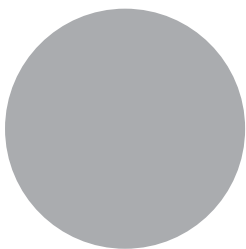
*UV resistance describes how well the coating is able to keep its original colour and gloss levels in accordance with EN10169. The higher the class, the better the resistance.*

*Corrosivity categories describe the outdoor climate conditions in accordance with EN12944. The higher the category, the more corrosive environment.*

*Read more about UV-resistance and corrosivity categories.*



RR20 Winter White



RR21 Pebble Grey

## Profiles



Profile option Micro 15



Profile option Rib 150



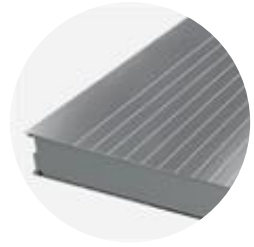
Profile option Rib 200



Profile option Rib 600



Profile option Flat



Profile option Linear 50

## Design tools



### **Traypan® software for designing sandwich panels**

With TrayPan®, you can design metal faced sandwich panels made by Ruukki. A panel structure can be designed as a single- or multi-span construction. You can easily give, with a few parameters, both suction and pressure loads caused by the wind. The application also calculates the necessary fasteners.

[Go to Traypan®](#)



## Download BIM objects to your desktop

ProLib brings Ruukki products as BIM models directly to your desktop in 3D form for design programs AutoCad, Autodesk Revit, Archicad and Tekla Structures. Product libraries compile all necessary design models and detailed drawings in one place. Library updates are automatically notified, so as a user you can be sure that your product information is consistently up to date. ProdLib can also be used as a standalone desktop application.

[Go to BIM library](#)

## Technical documents

Here you can find all technical documents related to Ruukki's sandwich panels. Documents are organised by document type. Click to enter document library.

**Product  
descriptions**



**Accessory  
documents**



**Load tables**



**Installation  
instructions**



**Maintenance  
instructions**



**Sound insulation  
values**



## Certificates and approvals

Here you can find all certificates and approvals related to Ruukki's sandwich panels. Documents are organised by document type. Click to enter document library.

**Declaration of  
performance**



**Environmental  
product declaration**



**Intruder resistance  
certificate**

