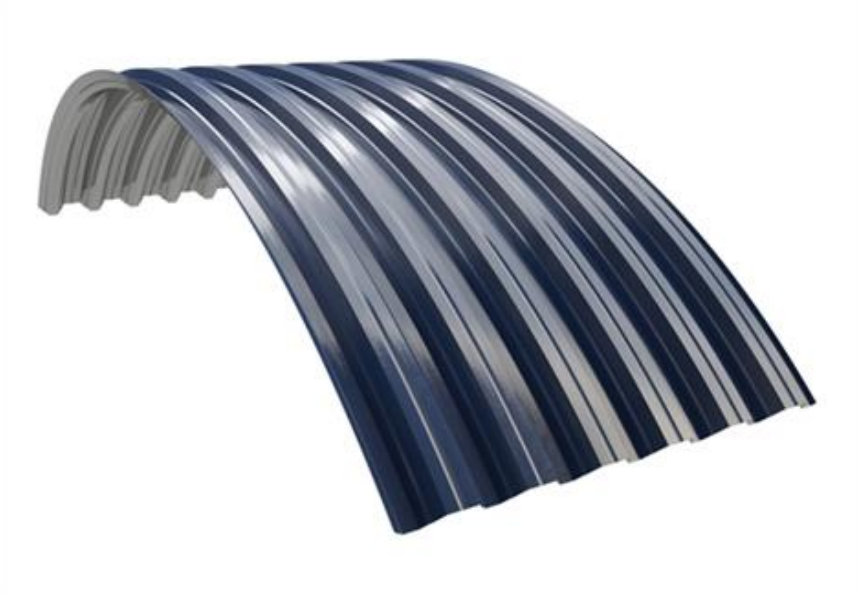


Load-Bearing Arched Sheet T45-30L-905

As one of the few manufacturers of load-bearing arched sheets on the market, we offer smooth arched profiles for curved structures. This product enables curved structures and surfaces for roofs and claddings.

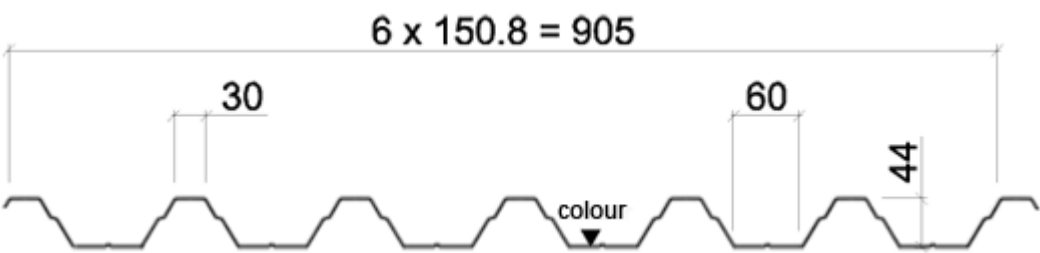
Applications:

- Canopies
- Entrances
- Spectator stands.

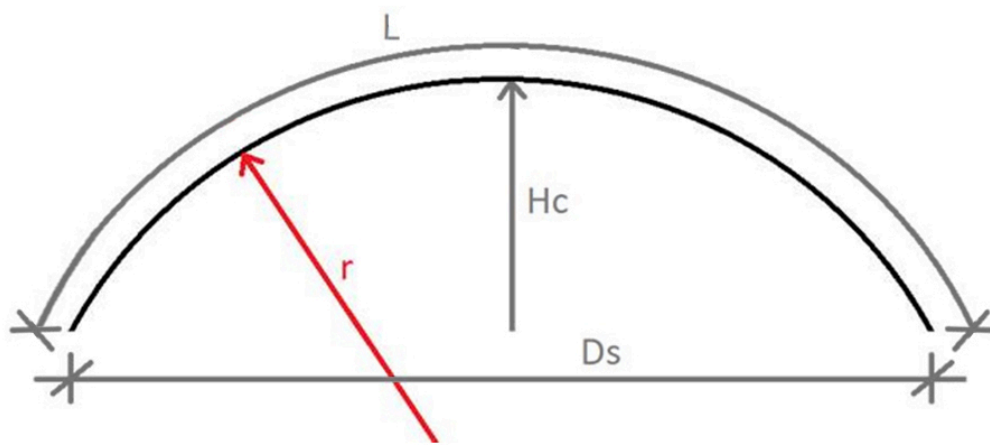


[SEND CONTACT REQUEST](#)

Properties



Model name	Load-Bearing Arched Sheet T45-30L-905
Product code	T45-30L-905
Height	44 mm
Width of valley	60 mm
Width of crown	30 mm
Effective width	905 mm
Total width	950 mm
Minimum length	2800 mm
Maximum Length	15000 mm
Quality control	Factory production control according to EN 1090-1 and EN 1090-4
Tolerances	Dimensions and shape according to EN 1090-4, material thickness according to EN 10143
CE Marking	EN1090-1
Execution class	EXC1, EXC2



Material thickness (mm)	r_{\min} (mm)	L_{\max} (mm)	L_{\min} (mm)	$H_{c \max}$ (mm)
0.7	17500	15000	2800	2000
0.9 (Polyester)	6500	15000	2800	2000
0.9 (Galvanized)	5500	15000	2800	2000

For production at least two measurements are needed. So when asking prices, availability or ordering have at least one of the following measurement combinations available:

- Length (L) + radius (r)
- Length (L) + span (Ds)
- Length (L) + height (Hc)
- Span (Ds) + radius (r)
- Span (Ds) + height (Hc)

Materials

Materials

Material thickness (mm)	Steel grade	Zinc (g/m ²)	Surface treatment	Corrosion class, interior	Corrosion class, exterior	Colours **	Weight (kg/m ²)	GWP, A1-A3 (kgCO ₂ e/m ²)	GWP, D (kgCO ₂ e/m ²)
0.7	S350	Z275	Galvanized	C2	-	-	7.59	19.7	-10.7

0.7	S350	Z275	Polyester 25	C3*	C3	RR20	7.59	20.8	-10.7
0.7	S350	Z275	GreenCoat Pural BT	-	C4	RR21, RR23, RR33	7.59	20.8	-10.7
0.9	S350	Z275	Galvanized	C2	-	-	9.76	25.4	-13.8
0.9	S350	Z275	Polyester 25	C3*	C3	RR20	9.76	26.7	-13.8

*) For perforated sheetings C2

**) The reverse sides of the colour coated sheets are painted as standard with 2-layer grey backside coating

Protection against corrosion

Environment	Coating
Interior applications in environments with corrosivity category C1, C2 according to EN ISO 12944-2 standard and A1, A2 according to EN 10169 standard	Steel sheets with zinc coating of 100 g/m ² and with polyester coating SP 15, thickness 15 µm
Interior applications in environments with corrosivity category C1, C2, C3 according to EN ISO 12944-2 standard and A1, A2, A3 according to EN 10169 standard	Steel sheets with zinc coating of 275 g/m ² and with polyester coating SP 25, thickness 25 µm

Technical documents

Here you can find all technical documents related to Ruukki's load-bearing sheets. Documents are organised by document type. Click to enter document library.

**Accessory
documents**



Detail drawings



**Installation
instructions**



**Maintenance
instructions**



Certificates and approvals

Here you can find all certificates and approvals related to Ruukki's load-bearing sheets. Documents are organised by document type. Click to enter document library.

**Declaration of
performance**



**Environmental
product
declarations**

