

# Liberta Elegant 550

Create a classic and harmonious surface with hidden fix Liberta Elegant 550 for ventilated steel and aluminium facade systems.

## **Ruukki® Emotion**

Available also with perforation and backlighting.

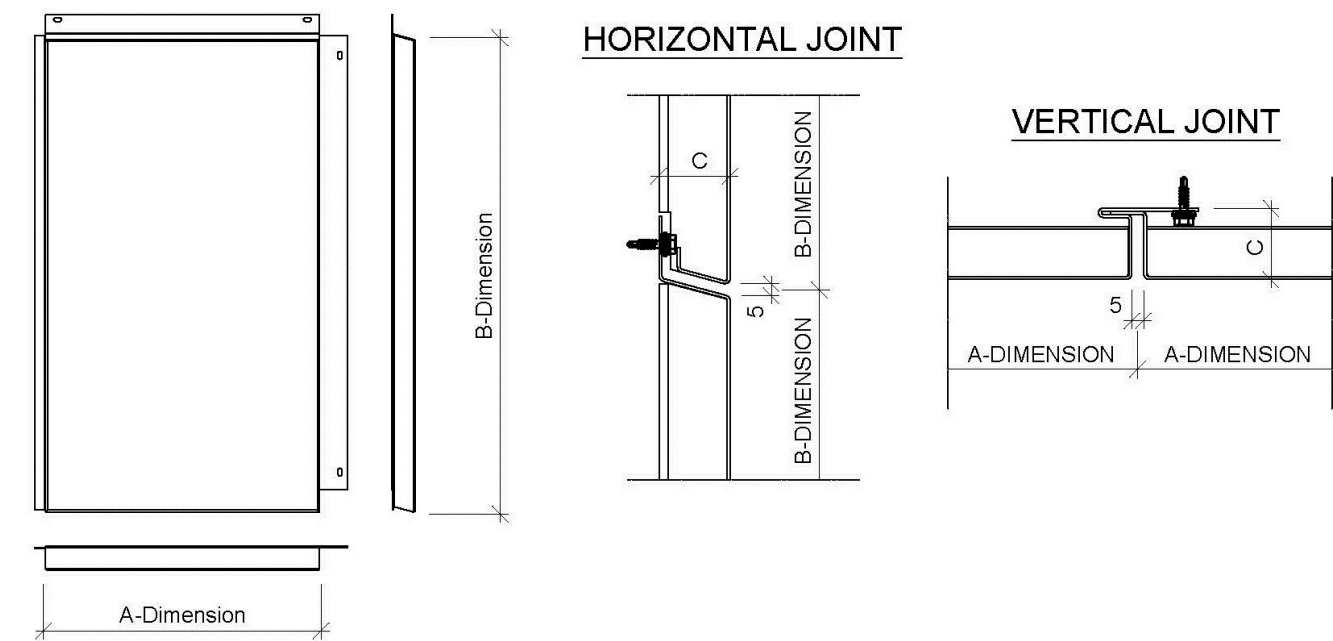
### **This product is optionally available with following sustainable features:**

- Steel facings made of recycled steel (SSAB Zero) for significantly lower CO<sub>2</sub> emissions and high circularity (Ruukki LowCarbon)



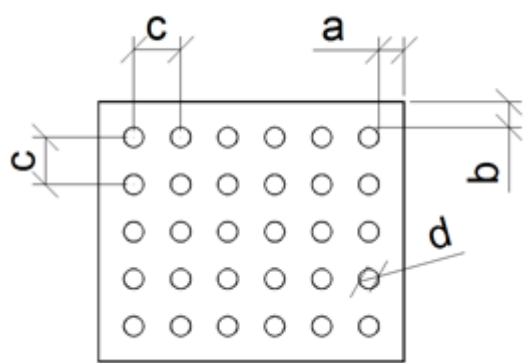
**SEND CONTACT REQUEST**

# Properties



|                  |                     |
|------------------|---------------------|
| Model name       | Liberta Elegant 550 |
| Depth            | 25, 30 mm           |
| Horizontal joint | 5 mm                |
| Vertical joint   | 5 mm                |
| Fastening Style  | Hidden fix          |

## Perforation layout



|                |    |
|----------------|----|
| Dimension/hole | mm |
|----------------|----|

|   |                        |
|---|------------------------|
| a | ≥10                    |
| b | ≥10                    |
| c | ≥ d+25                 |
| d | 16, 20, 30, 40, 50, 60 |

Symmetrical perforation: Fully perforated in symmetrical square layout. Only 1 hole size (d) and distance (a, b, c) per product.

Art perforation: Fully or partly perforated in freely chosen locations. All hole sizes (d) and distances (c) available per product.

### Size table

Click on the picture to see full resolution.

**Material:**

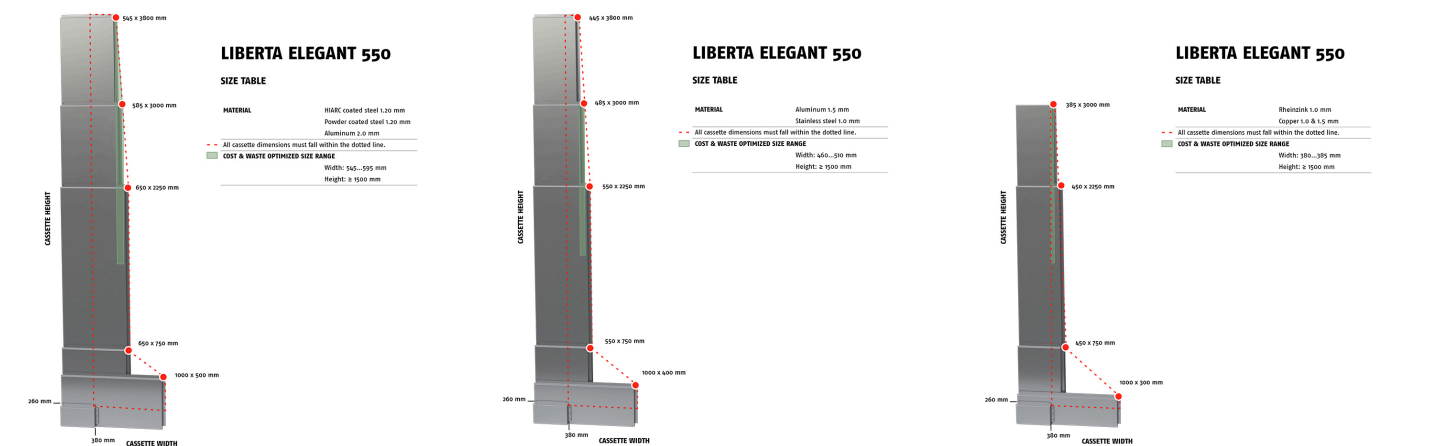
- HIARC coated steel 1.2 mm
- Powder coated steel 1.2 mm
- Aluminum 2.0 mm

**Material:**

- Aluminum 1.5 mm
- Stainless steel 1.0 mm

**Material:**

- Rheinzink 1.0 mm
- Copper 1.0 mm
- Copper 1.5 mm



## Materials

### Materials

| Material | Material thickness | Weight (kg/m <sup>2</sup> ) | Surface treatment | GWP A1-A3 (kg) | Available with | Minimum order | Reaction to fire |
|----------|--------------------|-----------------------------|-------------------|----------------|----------------|---------------|------------------|
|----------|--------------------|-----------------------------|-------------------|----------------|----------------|---------------|------------------|

|   | (mm) |      |   | CO <sub>2</sub> equiv./m <sup>2</sup> ) | perforation | amount (m <sup>2</sup> )   |                |
|---|------|------|---|---|-------------|--|----------------|
| Zero Steel<br>(LowCarbon)                     | 1.2  | 11.4 | GreenCoat<br>Pural<br>BT (Satin,<br>Metallic) | ~14.5<br>(estimation) *                 | No          | 900 (limited<br>availability)                                      | A1             |
| Steel   | 1.2  | 11.4 | GreenCoat<br>Pural<br>BT (Satin,<br>Metallic) | 35.5                                    | No          | Standard<br>colours: No<br>limitations<br>Extended<br>colours: 900 | A1             |
|   | 1.2  | 11.4 | Powder<br>coating                             | 35.5                                    | Yes         | 100  | A2 - s1,<br>d0 |
| Aluminium                                     | 2.0  | 6.5  | Powder<br>coating                             | 64.5                                    | Yes         | 250  | -              |
|   | 2.0  | 6.5  | PVDF coating                                  | 43.3                                    | Yes         | 250  | -              |
|   | 1.5  | 4.9  | Powder<br>coating                             | 48.6                                    | Yes         | 250  | -              |
|   | 1.5  | 4.9  | PVDF coating                                  | 32.7                                    | Yes         | 350  | -              |
| Rheinzink                                     | 1.0  | 8.7  | Pre-patinated<br>(no coating)                 | 41.3                                    | Limited     | 100  | A1             |
| Copper -<br>Nordic<br>Standard                | 1.5  | 16.2 | Pre-patinated<br>(no coating)                 | 11.6                                    | Limited     | 60   | A1             |
|   | 1.0  | 10.8 | Pre-patinated<br>(no coating)                 | 7.74                                    | Limited     | 60   | A1             |
| Copper -<br>Nordic<br>Green, Blue<br>or Brown | 1.5  | 16.2 | Pre-patinated<br>(no coating)                 | 12.7                                    | Limited     | 60   | A1             |
|   | 1.0  | 10.8 | Pre-patinated<br>(no coating)                 | 8.49                                    | Limited     | 60   | A1             |
| Brass -<br>Nordic Brass                       | 1.5  | 15.7 | Pre-patinated<br>(no coating)                 | 28.5                                    | Limited     | 60   | A1             |
|   | 1.0  | 10.5 | Pre-patinated<br>(no coating)                 | 19.0                                    | Limited     | 60   | A1             |
| Bronze -<br>Nordic<br>Bronze                  | 1.5  | 15.7 | Pre-patinated<br>(no coating)                 | 16.3                                    | Limited     | 60   | A1             |
|   | 1.0  | 10.5 | Pre-patinated<br>(no coating)                 | 10.9                                    | Limited     | 60   | A1             |

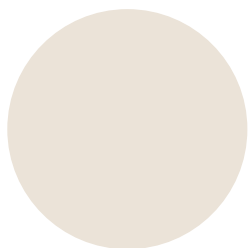
|                          |     |      |                               |      |         |     |    |
|--------------------------|-----|------|-------------------------------|------|---------|-----|----|
| Bronze -<br>Nordic Royal | 1.5 | 15.7 | Pre-patinated<br>(no coating) | 37.7 | Limited | 60  | A1 |
|                          | 1.0 | 10.5 | Pre-patinated<br>(no coating) | 25.2 | Limited | 60  | A1 |
| Stainless<br>steel       | 1.0 | 9.5  | Smooth (2B)                   | 38.0 | Limited | 125 | A1 |
|                          | 1.0 | 9,5  | Wet grinded<br>(4N)           | 38.0 | Limited | 125 | A1 |

\*) Calculations have been made using estimate for SSAB Zero™ recycled steel and data from Ruukki’s current Environmental Product Declaration (EPD) documents. The calculations are based on current estimates (3/2025).

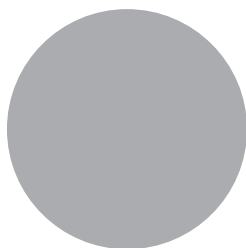
# Coatings and colors

## GreenCoat Pural BT (Standard colours)

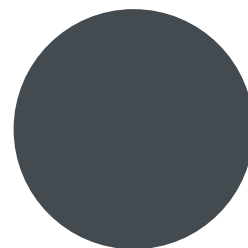
Gloss level: 20 GU (Satin) / 40 GU (Metallic)



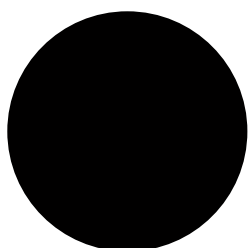
RR20 Winter white



RR21 Pebble grey



RR23 Mountain grey



RR33 Nordic night black



RR40 Metallic silver



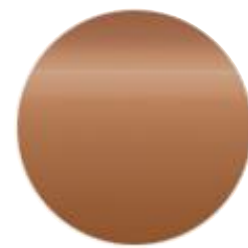
RR41 Metallic dark silver



RR42 Metallic gold



RR45 Metallic titanium



RR979 Metallic copper

---

## Extended colours

- GreenCoat Pural BT (steel)
- PVDF (aluminium)
- Powder paint (steel)
- Powder paint (aluminium)

# BIM objects



## Download BIM objects to your desktop

ProLib brings Ruukki products as BIM models directly to your desktop in 3D form for design programs AutoCad, Autodesk Revit, Archicad and Tekla Structures. Product libraries compile all necessary design models and detailed drawings in one place. Library updates are automatically notified, so as a user you can be sure that your product information is consistently up to date. ProdLib can also be used as a standalone desktop application.

[Go to BIM library](#)

## Download documents

### Declaration of performance



#### **Declaration of Performance 25/PP/PAR - Cladding products**

PDF, 43.7 KB

### Order form



#### **Ruukki Liberta rainscreen panels order form 2.4**

XLSM, 5.1 MB

### Maintenance instructions



#### **Ruukki Cor-Ten facades - maintenance instructions**

PDF, 70.3 KB



#### **Ruukki powder coated facade claddings - Maintenance instructions**

PDF, 0.6 MB



#### **Ruukki colour coated steel - Maintenance instructions**

PDF, 0.6 MB

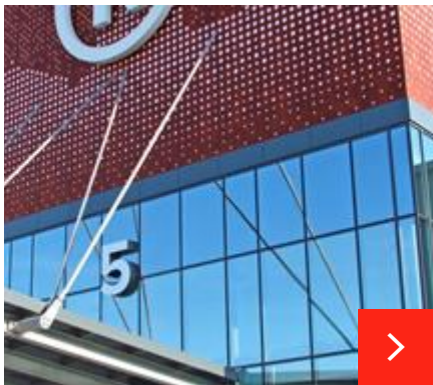
## Accessory documents



### Facade cladding accessories 02\_2025 ENG

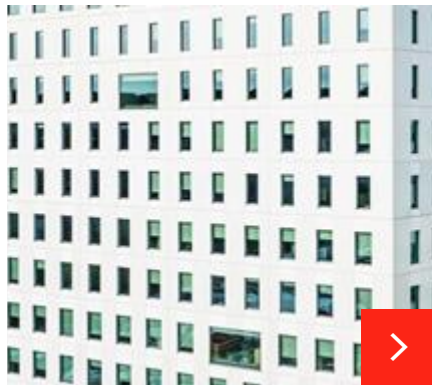
PDF, 4.1 MB

## References



### Retroville shopping centre

This modern shopping centre in Kyiv features energy-efficient Ruukki Forma system with high air-tightness sandwich panels and a wide variety of new and innovati...



### Tändstickan 3 - Office building in Sweden

Located in Gothenburg, Tändstickan 3 is a 12-storey office building. Ruukki supplied Liberta 550 rainscreen panels, some of which are perforated, for the projec...



### Kuopion Veturi, apartment building

We delivered vertically installed Liberta® Elegant 550 panels with hidden brackets to the site. The facade cladding system creates reflective and gleaming surfa...

[See all rainscreen panel references](#)