

Liberta Elegant 500

Create a classic and harmonious surface with hidden fix Liberta Elegant 500 for ventilated steel and aluminium facade systems.

Ruukki® Emotion

Available also with perforation and backlighting.

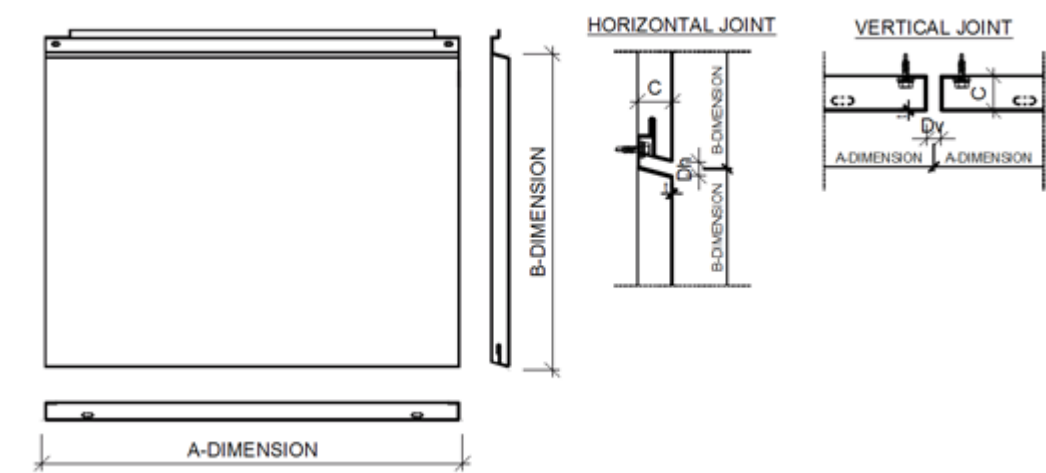
This product is optionally available with following sustainable features:

- Steel facings made of recycled steel (SSAB Zero) for significantly lower CO₂ emissions and high circularity (Ruukki LowCarbon)



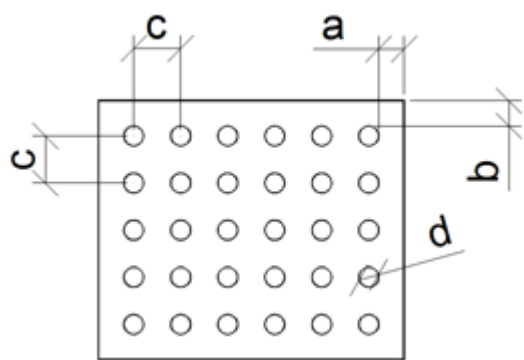
SEND CONTACT REQUEST

Properties



| | |
|------------------|--------------------------|
| Model name | Liberta Elegant 500 |
| Depth | 25, 30 mm |
| Horizontal joint | 5, 10, 15, 20, 25, 30 mm |
| Vertical joint | 5, 10, 15, 20, 25, 30 mm |
| Fastening Style | Hidden fix |

Perforation layout



| Dimension/hole | mm |
|----------------|--------|
| a | ≥10 |
| b | ≥10 |
| c | ≥ d+25 |

| | |
|---|------------------------|
| d | 16, 20, 30, 40, 50, 60 |
|---|------------------------|

Symmetrical perforation: Fully perforated in symmetrical square layout. Only 1 hole size (d) and distance (a, b, c) per product.

Art perforation: Fully or partly perforated in freely chosen locations. All hole sizes (d) and distances (c) available per product.

Size table

Click on the picture to see full resolution.

Material:

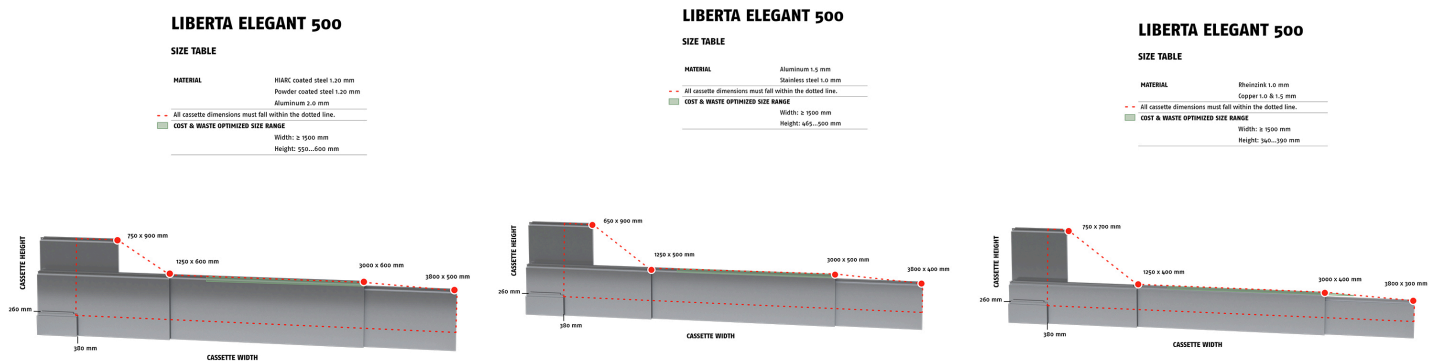
- HIARC coated steel 1.2 mm
- Powder coated steel 1.2 mm
- Aluminum 2.0 mm

Material:

- Aluminum 1.5 mm
- Stainless steel 1.0 mm

Material:

- Rheinzink 1.0 mm
- Copper 1.0 mm
- Copper 1.5 mm



Materials

Materials

| Material | Material thickness (mm) | Weight (kg/m ²) | Surface treatment | GWP A1-A3 (kg CO ₂ equiv./m ²) | Available with perforation | Minimum order amount (m ²) | Reaction to fire |
|------------------------|-------------------------|-----------------------------|--------------------------------------|---|----------------------------|--|------------------|
| Zero Steel (LowCarbon) | 1.2 | 11.4 | GreenCoat Pural BT (Satin, Metallic) | ~14.5 (estimation) * | No | 900 (limited availability) | A1 |

| | | | | | | | |
|--------------------------------------|-----|------|--------------------------------------|------|---------|---|-------------|
| Steel | 1.2 | 11.4 | GreenCoat Pural BT (Satin, Metallic) | 35.5 | No | Standard colours: No limitations Extended colours: 900 | A1 |
| | 1.2 | 11.4 | Powder coating | 35.5 | Yes | 100 | A2 - s1, d0 |
| Aluminium | 2.0 | 6.5 | Powder coating | 64.5 | Yes | 250 | - |
| | 2.0 | 6.5 | PVDF coating | 43.3 | Yes | 250 | - |
| | 1.5 | 4.9 | Powder coating | 48.6 | Yes | 250 | - |
| | 1.5 | 4.9 | PVDF coating | 32.7 | Yes | 350 | - |
| Rheinzink | 1.0 | 8.7 | Pre-patinated (no coating) | 41.3 | Limited | 100 | A1 |
| Copper - Nordic Standard | 1.5 | 16.2 | Pre-patinated (no coating) | 11.6 | Limited | 60 | A1 |
| | 1.0 | 10.8 | Pre-patinated (no coating) | 7.74 | Limited | 60 | A1 |
| Copper - Nordic Green, Blue or Brown | 1.5 | 16.2 | Pre-patinated (no coating) | 12.7 | Limited | 60 | A1 |
| | 1.0 | 10.8 | Pre-patinated (no coating) | 8.49 | Limited | 60 | A1 |
| Brass - Nordic Brass | 1.5 | 15.7 | Pre-patinated (no coating) | 28.5 | Limited | 60 | A1 |
| | 1.0 | 10.5 | Pre-patinated (no coating) | 19.0 | Limited | 60 | A1 |
| Bronze - Nordic Bronze | 1.5 | 15.7 | Pre-patinated (no coating) | 16.3 | Limited | 60 | A1 |
| | 1.0 | 10.5 | Pre-patinated (no coating) | 10.9 | Limited | 60 | A1 |
| Bronze - Nordic Royal | 1.5 | 15.7 | Pre-patinated (no coating) | 37.7 | Limited | 60 | A1 |
| | 1.0 | 10.5 | Pre-patinated (no coating) | 25.2 | Limited | 60 | A1 |
| Stainless steel | 1.0 | 9.5 | Smooth (2B) | 38.0 | Limited | 125 | A1 |

| | | | | | | | |
|--|-----|-----|---------------------|------|---------|-----|----|
| | 1.0 | 9,5 | Wet grinded (4N) | 38.0 | Limited | 125 | A1 |
|--|-----|-----|---------------------|------|---------|-----|----|

*) Calculations have been made using estimate for SSAB Zero™ recycled steel and data from Ruukki’s current Environmental Product Declaration (EPD) documents. The calculations are based on current estimates (3/2025).

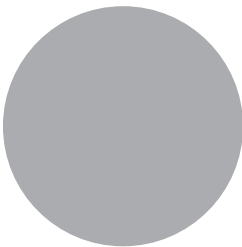
Coatings and colors

GreenCoat Pural BT (Standard colours)

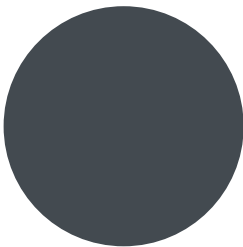
Gloss level: 20 GU (Satin) / 40 GU (Metallic)



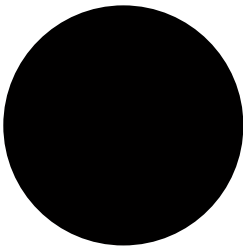
RR20 Winter white



RR21 Pebble grey



RR23 Mountain grey



RR33 Nordic night black



RR40 Metallic silver



RR41 Metallic dark silver



RR42 Metallic gold



RR45 Metallic titanium



RR979 Metallic copper

Extended colours

- GreenCoat Pural BT (steel)

- PVDF (aluminium)
- Powder paint (steel)
- Powder paint (aluminium)

BIM objects



Download BIM objects to your desktop

ProLib brings Ruukki products as BIM models directly to your desktop in 3D form for design programs AutoCad, Autodesk Revit, Archicad and Tekla Structures. Product libraries compile all necessary design models and detailed drawings in one place. Library updates are automatically notified, so as a user you can be sure that your product information is consistently up to date. ProdLib can also be used as a standalone desktop application.

[Go to BIM library](#)

Download documents

Declaration of performance



Declaration of Performance 25/PP/PAR - Cladding products

PDF, 43.7 KB

Order form



Ruukki Liberta rainscreen panels order form 2.4

XLSM, 5.1 MB

Maintenance instructions



Ruukki Cor-Ten facades - maintenance instructions

PDF, 70.3 KB



Ruukki powder coated facade claddings - Maintenance instructions

PDF, 0.6 MB



Ruukki colour coated steel - Maintenance instructions

PDF, 0.6 MB

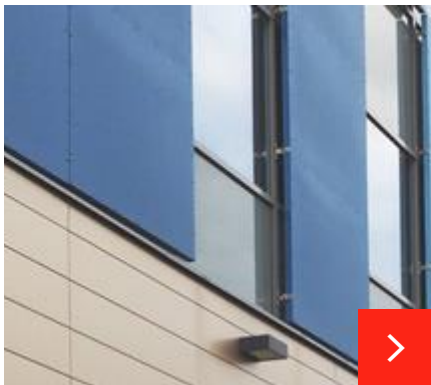
Accessory documents



Facade cladding accessories 02_2025 ENG

PDF, 4.1 MB

References



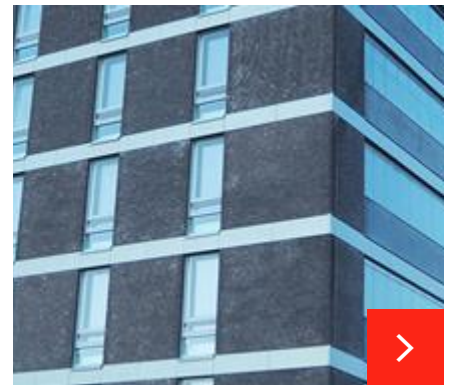
Commercial building – Business Centre Westeri

The building's facade has been partially enveloped with Ruukki's Liberta Elegant 500 facade cassettes in gold (RR42), a rarely-used colour. The colour brings a ...



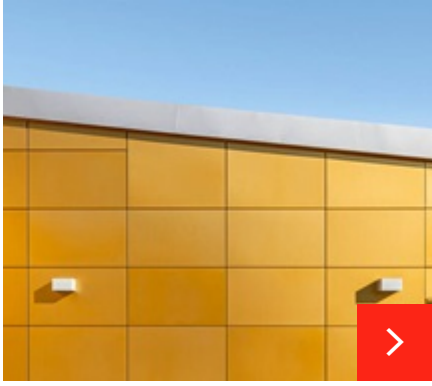
Turku Energia – steam generation plant

An artwork, Water Memory, by Finnish artist Mauri Kosonen, forms part of the northwest façade. The artwork has been created using Ruukki Emotion product, where ...



Atriumpiha Jätkäsaari

Liberta 500 Rheinzink cassette system and Lamella Vertical 70 was selected for the project from Ruukki's expanded material portfolio.



Lyckeskolan school, Sweden

Ruukki supplied Liberta
Elegant 500 rainscreen panels
in anodized aluminum for the
lobby, the sandwich panels for
the gym walls and the load-
bearing roofing she...

[See all rainscreen panel references](#)