

# Liberta Cor-Ten 700

Create a harmonious, rusty layout with Liberta Cor-Ten 700 for ventilated Cor-Ten facade systems.

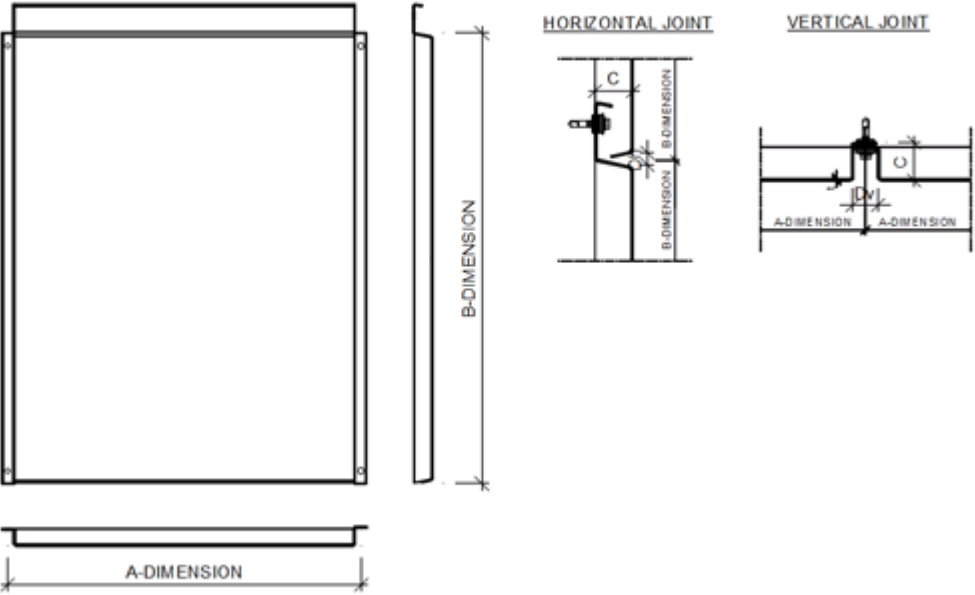
## **Ruukki® Emotion**

Available also with perforation and backlighting.



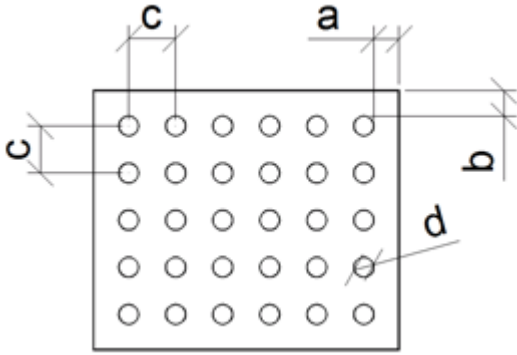
[SEND CONTACT REQUEST](#)

# Properties



Model name	Liberta Cor-Ten 700
Depth	30 mm
Horizontal joint	10 mm
Vertical joint	20, 25, 30 mm
Fastening Style	Standard fix

## Perforation layout



Dimension/hole	mm
a	≥10
b	≥10
c	≥ d+25
d	16, 20, 30, 40, 50, 60

Symmetrical perforation: Fully perforated in symmetrical square layout. Only 1 hole size (d) and distance (a, b, c) per product.

Art perforation: Fully or partly perforated in freely chosen locations. All hole sizes (d) and distances (c) available per product.

## Size table

Click on the picture to see full resolution.

### Material:

- COR-TEN® A Steel 1.5 mm



# Materials

## Materials

Material	Material thickness (mm)	Weight (kg/m <sup>2</sup> )	Surface treatment	GWP A1-A3 (kg CO <sub>2</sub> equiv./m <sup>2</sup> )	Reaction to fire
Steel Cor-Ten A*	1.5	13.6	-	38.1	A1

Due to its unique chemical composition, Cor-Ten weather-resistant structural steel sheet has a significantly better ability to resist atmospheric corrosion than similar general structural steels. Weather-resistant steel is used in architectural applications without requiring any separate surface treatment. Use of weather-resistant steel thus eliminates the need for surface treatments during the manufacturing and operational periods, in turn lowering the environmental load and costs throughout the product's life cycle.

The weather resistance of the product is due to its oxide layer i.e. the patina which forms on the steel surface which is resistant to the action of alloys and has low oxygen permeability. The oxide layer is created when weather-resistant steel is wetted and dried repeatedly. The protective surface layer forms in normal weather conditions within 18...36 months. The patina layer is initially reddish brown in colour, becoming darker in tone over the course of time. In industrial environments the patina forms more rapidly on the steel and darkens more than in cleaner rural environments. The protective patina layer cannot form, however, if the surface of the steel is continuously damp or dirty.

Cor-Ten A grade steel is used for the manufacture of panels (S355J0WP-COR-TEN A).

# BIM objects



## Download BIM objects to your desktop

ProLib brings Ruukki products as BIM models directly to your desktop in 3D form for design programs AutoCad, Autodesk Revit, Archicad and Tekla Structures. Product libraries compile all necessary design models and detailed drawings in one place. Library updates are automatically notified, so as a user you can be sure that your product information is consistently up to date. ProLib can also be used as a standalone desktop application.

[Go to BIM library](#)

# Download documents

## Declaration of performance



### **Ruukki Cor-Ten facades - Certification**

PDF, 31.8 KB

## Order form



### **Ruukki Liberta rainscreen panels order form 2.4**

XLSM, 5.1 MB

## Maintenance instructions



### **Selection recommendations for color-coated thin sheet**

PDF, 1.6 MB



### **Ruukki Cor-Ten facades - maintenance instructions**

PDF, 70.3 KB



### **Ruukki powder coated facade claddings - Maintenance instructions**

PDF, 0.6 MB



### **Ruukki colour coated steel - Maintenance instructions**

PDF, 0.6 MB

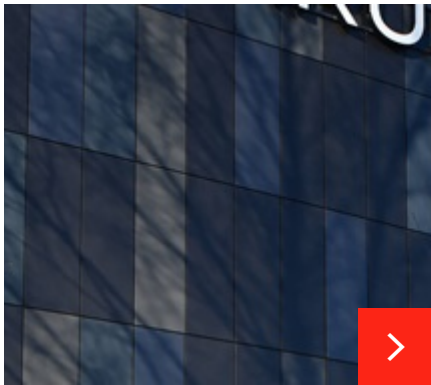
## Accessory documents



**Facade cladding accessories 11\_2025 ENG**

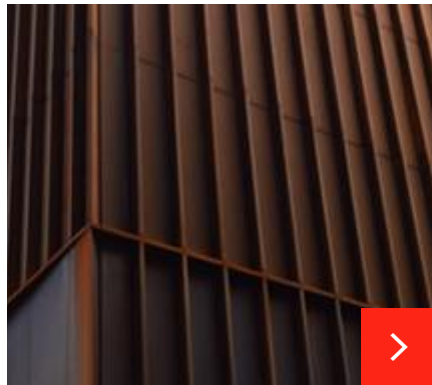
PDF, 2.8 MB

## References



### **Varuste.net commercial building in Finland**

"We have been installing Ruukki's products for a long time. The smoothness of installation work on the construction site was guaranteed by the coordination of d...



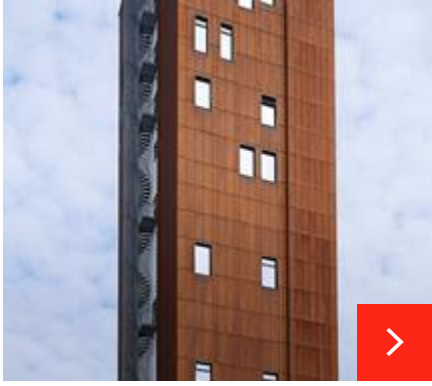
### **Hallé, St Peter's Greater Manchester**

Ruukki panels have been supplied to a restored church to create a new home for the famous The Hallé orchestra. The three-storey extension at The Oglesby Centre ...



### **LUT University – Public construction**

During the years 2016–2018, the main building of LUT University in Lappeenranta, specialising in technical and economic research and education, was completely o...



## **Tårnet Kulturarena office building in Norway**

For this building we delivered a Ruukki Forma® façade system including sandwich panels and the façade claddings.

[See all rainscreen panel references](#)