

# Design Tokyo S18

Create a harmonic rhythm with Design Tokyo™ S18 for ventilated steel facade systems.

Applications: facade and ceiling surfaces.

## **Ruukki® Emotion**

Available also with perforation and backlighting.

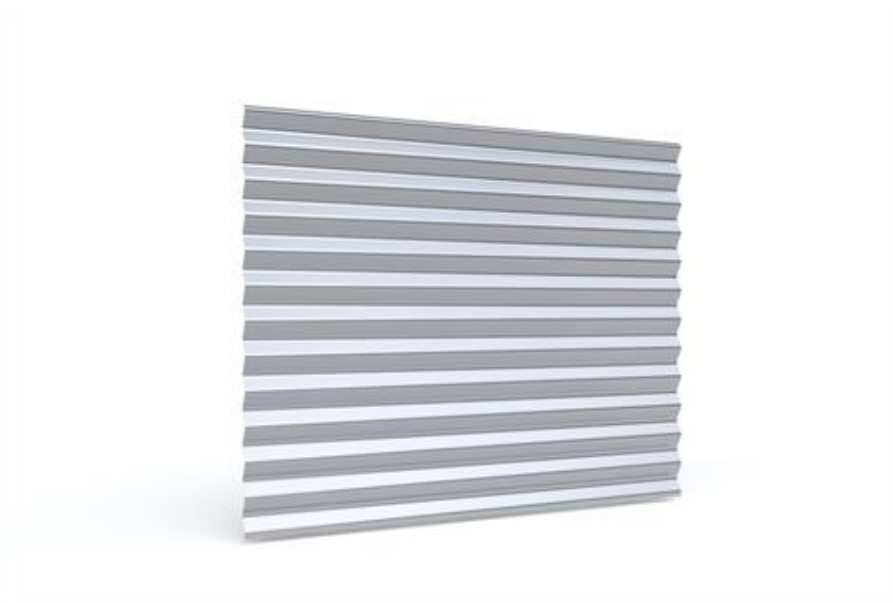
## **Ruukki® Acoustic Claddings**

Available also with perforation for sound absorption.

**BIM - OBJECTS**

**This product is optionally available with following sustainable features:**

- Steel facings made of recycled steel (SSAB Zero) for significantly lower CO2 emissions and high circularity (Ruukki LowCarbon)

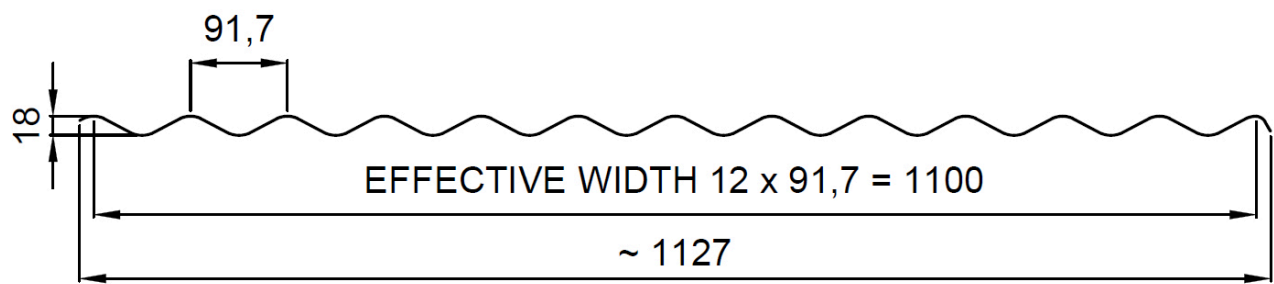


**SEND CONTACT REQUEST**

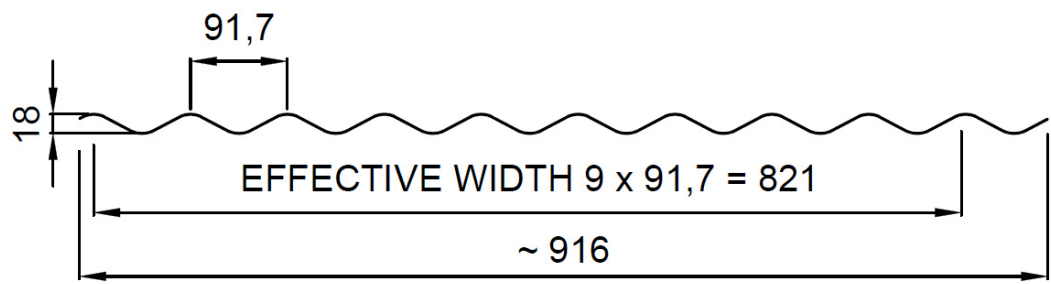
The information on our website is accurate to the best of our knowledge and understanding. Although every effort has been made to ensure accuracy, the company cannot accept any responsibility for any direct or indirect damages resulting from possible errors or incorrect application of the information of this publication. We reserve the right to make changes.

# Properties

Cross-section drawing for Design Tokyo S18 made out of colour coated steel, stainless steel, aluminium or Cor-Ten



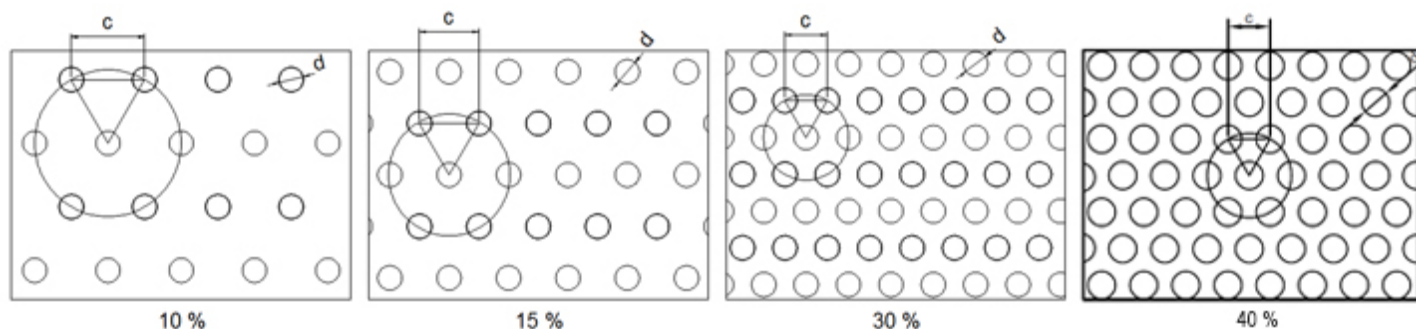
Cross-section drawing for Design Tokyo S18 made out of copper & brass



Model name	Design Tokyo S18
Effective width	1100 mm *
Total width	~1127 mm *
Depth	18 mm
Pitch	92 mm
Minimum length	600 mm
Maximum length	9000 mm

\* Copper & Brass: Effective width 821mm, total width ~916mm

## Perforation layout



10 % perforation, hole size  $d = 4$  mm, centres  $c = 12$  mm

15 % perforation, hole size  $d = 4$  mm, centres  $c = 10$  mm

30 % perforation, hole size  $d = 4$  mm, centres  $c = 7$  mm\*

40 % perforation, hole size  $d = 5$  mm, centres  $c = 7.5$  mm

\* Standard solution in Ruukki® Acoustic Claddings

## Materials

### Materials

Material	Material thickness (mm)	Weight (kg/m <sup>2</sup> )	Surface treatment	GWP A1-A3 (kg CO <sub>2</sub> equiv./m <sup>2</sup> )	Available with perforation	Minimum order amount (m <sup>2</sup> )	Reaction to fire
Zero Steel (LowCarbon)	0.6	5.9	GreenCoat Pural BT (Satin, Metallic)	6.6	x	2000 (limited availability)	A1
Steel	0.6	5.9	GreenCoat Pural BT (Satin, Metallic)	16.6	x	Standard colours - No limitations (except perforated 100) Extended colours - 2000*	A1
	0.6	5.9	Powder coating	16.6	x	100	A2 - s1,d0
Aluminium	0.7	2.4	Powder coating	21.5	x	250	-
	0.7	2.4	PVDF	4.6	x	750	-

			coating				
Cor-Ten	0.7	7.0	Coating on reverse side	17.7	x	No limitations (except perforated 100)	A1
Rheinzink	0.7	6.3	Pre-patinated (no coating)	27.0	-	100	A1
Copper - Nordic Standard	0.6	6.7	Pre-patinated (no coating)	4.34	-	100	A1
Copper - Nordic Green, Blue or Brown	0.6	6.7	Pre-patinated (no coating)	4.75	-	100	A1
Brass - Nordic Brass	0.6	6.5	Pre-patinated (no coating)	10.6	-	100	A1
Stainless steel	0.5	4.9	Smooth 2B (steel grade 304, 316)	17.7	-	250	A1

\*) Minimum order amount - 100 m<sup>2</sup> for Colours RR22, RR24, RR29, RR32, RR33, RR34, RR35, RR45

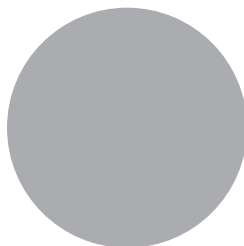
## Coatings and colors

### GreenCoat Pural BT (Standard colours)

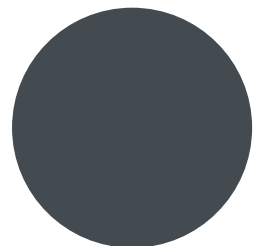
Gloss level: 20 GU (Satin) / 40 GU (Metallic)



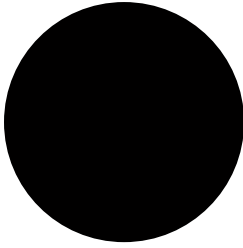
RR20 Winter white



RR21 Pebble grey



RR23 Mountain grey



RR33 Nordic night black



RR40 Metallic silver



RR41 Metallic dark silver



RR42 Metallic gold



RR45 Metallic titanium



RR979 Metallic copper

---

## Extended colours

- [GreenCoat Pural BT \(steel\)](#)
- [PVDF \(aluminium\)](#)
- [Powder paint \(steel\)](#)
- [Powder paint \(aluminium\)](#)

## BIM objects



### Download BIM objects to your desktop

ProLib brings Ruukki products as BIM models directly to your desktop in 3D form for design programs AutoCad, Autodesk Revit, Archicad and Tekla Structures. Product libraries compile all necessary design models and detailed drawings in one place. Library updates are automatically notified, so as a user you can be sure that your product information is consistently up to date. ProLib can also be used as a standalone desktop application.

[Go to BIM library](#)

# Download documents

## Declaration of performance

Design profile S18:

Other design profiles:



**Declaration of Performance 25/PP/PAR - Cladding products**

PDF, 43.7 KB

Cor-Ten design profiles:



**Declaration of Performance 25/PP/PAR - Cladding products**

PDF, 43.7 KB

## Order form



**Ruukki Design Profile order form 2.2.2**

XLSM, 0.6 MB

## Maintenance instructions



**Selection recommendations for color-coated thin sheet**

PDF, 1.6 MB



**Ruukki Cor-Ten facades - maintenance instructions**

PDF, 70.3 KB



**Ruukki powder coated facade claddings - Maintenance instructions**

PDF, 0.6 MB



**Ruukki colour coated steel - Maintenance instructions**

PDF, 0.6 MB

## Accessory documents



**Facade cladding accessories 02\_2025 ENG**

PDF, 4.1 MB

## References



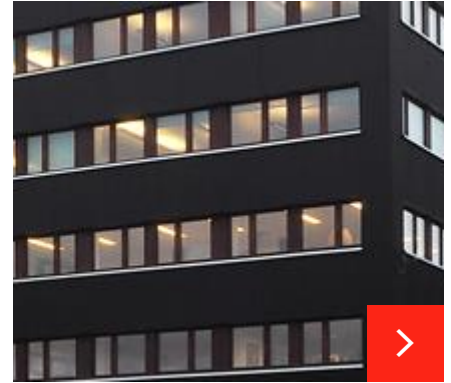
### **RIMI - A logistics centre in Latvia**

The facade of RIMI has Ruukki Liberta® 102 Grande and Design Profile Tokyo S18 cladding. Liberta® 102 Grande is a classic member of design panels used for extra...



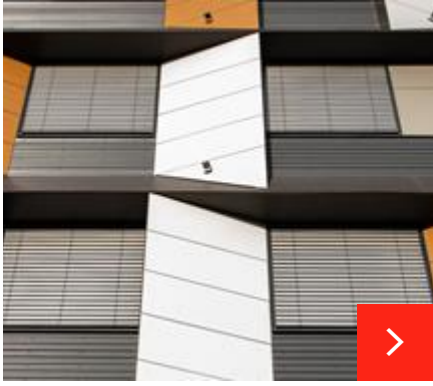
### **Eeden - Shopping centre**

Ruukki delivered the sandwich panels, design profiles and load-bearing roofing sheets for the building. The most impressive delivery was the gold-coloured, perf...



### **Venstres hus - office building**

Ruukki supplied black aluminium façade profiles made especially for this building. They came from the factory made-to-measure and ready to install in exactly th...



**Office building in SWH Office Center**

Ruukki delivered façade cladding materials for Skanstes City in Latvia

[See all design profile references](#)