

# Sandwich panel SP2B X-PIRS

Sandwich panel **SP2B X-PIRS** is available in thicknesses 100 - 120 mm.

It is a perfect solution for most buildings and structures, combining **high quality** with **very good technical properties**. Innovative technology increasing strength parameters of the panel provides for **load-bearing capacity up to 40% higher** comparing to standard solutions. The panel's excellent quality ensures **very good fire resistance properties**, thus increasing fire safety of buildings.

The core of this sandwich panel is made of rigid, HCFC-free, self-extinguishing and sustainable polyisocyanurate foam (PIR). Its **excellent thermal insulation properties** enable the decrease of panel thickness which transfers directly to lower transportation and assembly costs, as well as **significant savings** of building's life cycle costs.

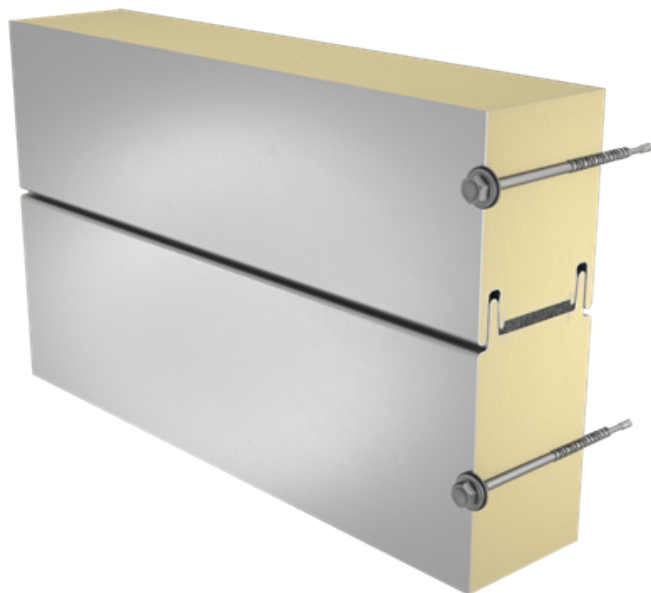
Optionally, on request, **SP2B X-PIRS** sandwich panel, in thicknesses 100 - 120 mm, can be delivered as FM Approved product with a certificate granted by the world-biggest insurance company FM Global. The global certificate received based on 4880 and 4881 standards confirms that a building's envelope made of these sandwich panels from Ruukki ensures the highest safety level in case of fire or hurricane.

For all needed information about FM Approved panels, please contact Ruukki Sales.



## Application:

- External walls
- Internal walls
- Ceilings



**SÄND KONTAKTFÖRFRÅGAN**

# Egenskaper

Produktnamn	Sandwich panel SP2B X-PIRS
Standard modulär bredd	1100 mm
Valfri modulär bredd (B)	1000 (D = 100, 110, 120 mm)
Min. längd	2000 mm
Max. längd	18500 mm
Plåttjocklek utvändig	0,5 mm
Plåttjocklek invändig	0,4 mm
External Fire Exposure	NRO

Tjocklek D (mm)	100	110	120
Vikt (kg/m <sup>2</sup> )	12,4	12,7	13,1
U-värde (W/m <sup>2</sup> K)	0,22	0,20	0,18
Ljudisolering Rw (dB)	24	24	24
Brandskyddsklass	B-s1,d0	B-s1, d0	B-s1,d0
GWP-total, A1-A3 (kg CO <sub>2</sub> ◇/m <sup>2</sup> )	31,1	31,8	32,6
Värde för GWP-total A1-A3 (kg CO <sub>2e</sub> /m <sup>2</sup> ) för Ruukki® LowCarbon	-	-	-

Brandmotstånd för vägg & max spännvid horisontell / vertikal montering (m):	100	110	120
EI 15	6.0 / 7.5	6.0 / 7.5	6.0 / 7.5
EI 20	- / 3.0	- / 3.0	- / 3.0
EW 15	6.0 / 7.5	6.0 / 7.5	6.0 / 7.5
EW 20	- / 4.0	- / 4.0	- / 4.0

Alla egenskaper är deklarerade enligt EN 14509 och relaterade standarder.

# Beläggningar och kulörer

## Materials

Facing	Coating	Glanstal (GU)	Corrosivity category	UV resistance	Colours
External	GreenCoat Pural BT Satin	20	C4	Ruv4-5	RAL7035 (RR292), RAL9010 (RR126)
External	GreenCoat Pural BT Metallic	40	C4	Ruv4	RAL9006 (RR40), RAL9007 (RR41)
External	Polyester	35	C3	Ruv2-3	RAL1015 (RR807), RAL1021, RAL2003, RAL3000 (RR770), RAL3009 (RR29), RAL3013 (RR774), RAL5003 (RR4F8), RAL5005 (RR4A8), RAL5012 (RR408), RAL6011 (RR526), RAL6018 (RR5G8), RAL7015 (RR23), RAL7016 (RR288), RAL7035 (RR2B1), RAL7040 (RR287), RAL9002 (RR1G6), RAL9003 (RR106), RAL9006 (RR946), RAL9007, RAL9010 (RR1G5), Golden Oak
Internal	Polyester	35	C3	-	RAL9002 (RR1G6), RAL9010 (RR1G5)
Internal	PVC laminate *		C4	-	White

\*) optional material

UV resistance describes how well the coating is able to keep its original colour and gloss levels in accordance with EN10169. The higher the class, the better the resistance.

Corrosivity categories describe the outdoor climate conditions in accordance with EN12944. The higher the category, the more corrosive environment.

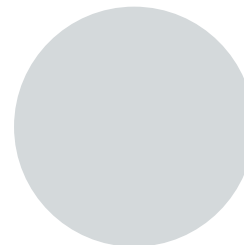
## Standardkulörer



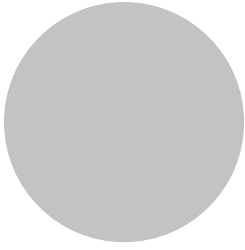
RAL9010 Pure white RR1G5



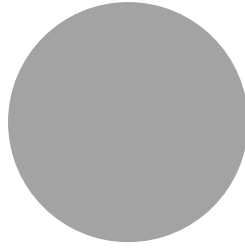
RAL9002 Grey white RR1G6



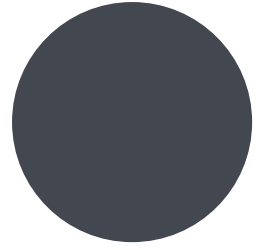
RAL7035 Light grey RR2B1



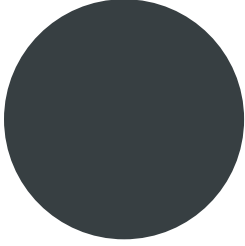
RAL9006 White aluminium RR946



RAL9007 Grey aluminium



RAL7015 Slate grey RR23

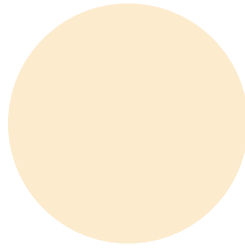


RAL7016 Anthracite grey RR288

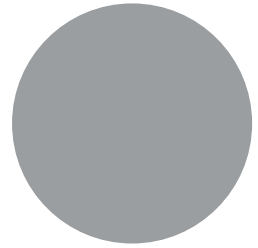
### Utökade kulörer



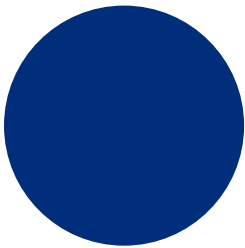
RAL9003 Signal white RR106



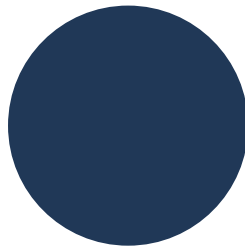
RAL1015 Light ivory RR807



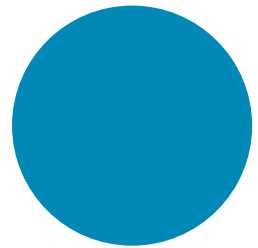
RAL7040 Window grey RR287



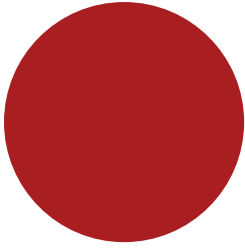
RAL5005 Signal blue



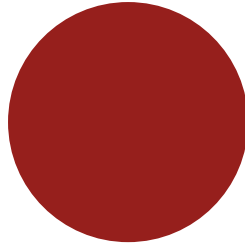
RAL5003 Sapphire blue RR4F8



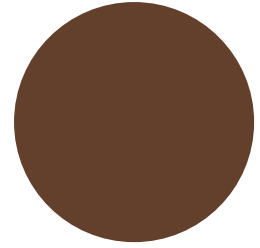
RAL 5012 Light blue RR408



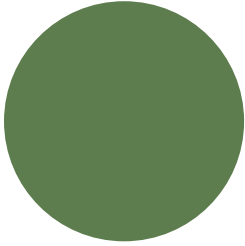
RAL3000 Flame Red RR770



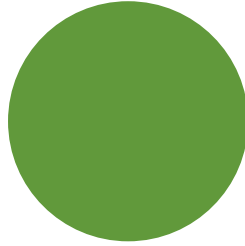
RAL3013 Tomato red RR774



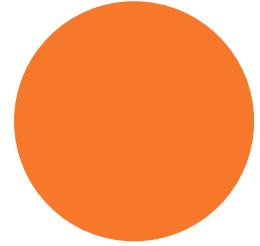
RAL3009 Oxide red RR29



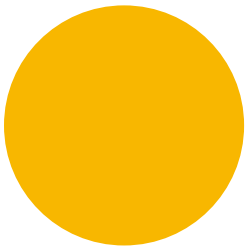
RAL6011 Reseda green RR526



RAL 6018 Yellow green RR5G8



RAL2003 Pastel orange

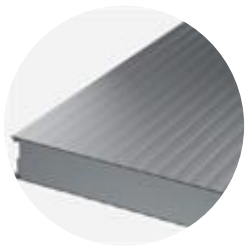


RAL1021 Colza yellow



Golden oak

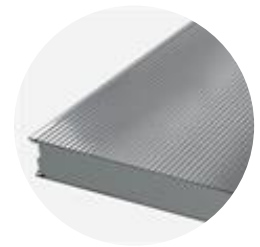
## Profile options



Linear L25



Linear



Micro

Modular width	Facing	Profile options
1100mm	External	L, L25, M
	Internal	L25
1000mm	External	L, L25, M

## Programvaror



### TrayPan® programvara för dimensionering av sandwichpaneler

TrayPan® dimensionerar sandwichpaneler. Med hjälp av Traypan väljer Du rätt Ruukki panel. Du kan enkelt konfigurera Din byggnad och beräkna dimensionerande vindlaster på väggarna. Programmet beräknar även nödvändiga infästningar.

[Gå till TrayPan®](#)



### Ladda ner BIM-objekt

Med ProdLib kan Du enkelt ladda ner Ruukkis produkter i 3D till designprogram som AutoCad, Autodesk Revit, Archicad och Tekla Structures. Produktbiblioteket samlar alla nödvändiga modeller och detaljer på ett och samma ställe. Uppdateringar sker löpande och automatiskt så att Du som användare skall vara säker på att Du alltid jobbar med den senaste versionen. ProdLib kan även användas som enskilt nedladdad app.

[Gå till BIM biblioteket](#)

## Tekniska dokument

Här hittar Du alla nödvändiga dokument avseende våra sandwichelement.

Produktbeskrivningar >

Tillbehörsdokument >

Belastningstabeller >

**Installationsanvisningar**  
>

**Drift- och  
skötselinstruktioner**  
>

**Ljudisolering**  
>

## Certifikat och intyg

Här hittar Du alla nödvändiga certifikat och intyg avseende våra sandwichelement.

**Försäkran om  
prestanda**  
>

**Miljövarudeklaration**  
>

**Certifikat för  
inbrottsskydd**  
>

**Garanti**  
>