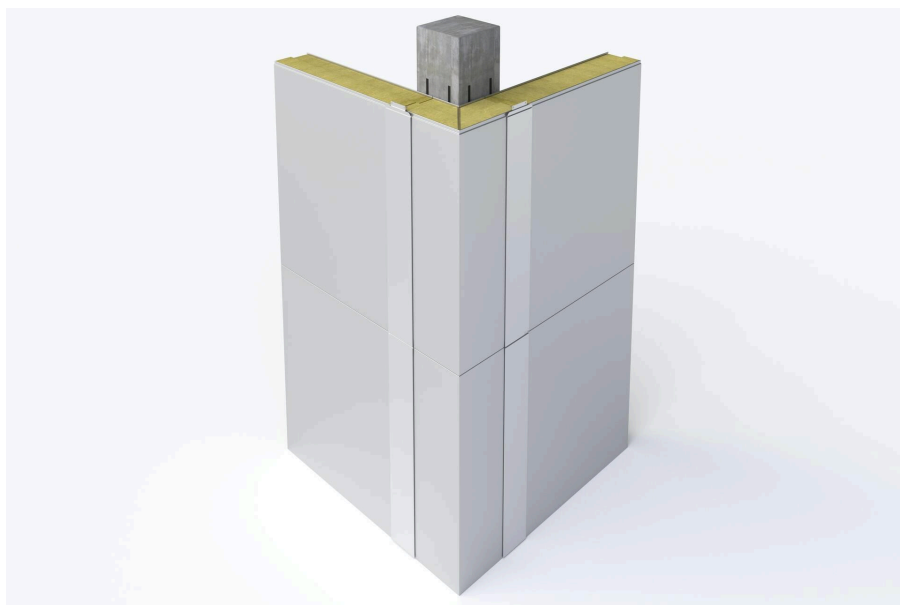


## SPA corner panel

SPA corner panel for the outer corners of buildings. Standard bending angle 90 °.

Corner panel available for all panel types, thickness classes and profile options.

Corner panels to the inner corners of buildings, as well as panels bent to different degrees, must always be agreed on a case-by-case basis.



**SEND CONTACT REQUEST**

# Properties

## Minimum and maximum dimensions:

Product thickness class	A / B outer dimension minimum (mm)	A / B outer dimension maximum (mm)
SPA 100 - 200	300	2400
SPA 230	350	2400
SPA 300	420	2400

Note:

- Corner panels to the inner corners of buildings, as well as panels bent to different degrees, must always be agreed on a case-by-case basis.

## Coatings and colors

The SPA corner panel is available in same colors and coating options as the basic wall panel.

## Design tools



### Download BIM objects to your desktop

ProdLib brings Ruukki products as BIM models directly to your desktop in 3D form for design programs AutoCAD, Autodesk Revit, Archicad and Tekla Structures. Product libraries compile all necessary design models and detailed drawings in one place. Library updates are automatically notified, so as a user you can be sure that your product information is constantly up to date. ProdLib can also be used as a standalone desktop application.

[Go to BIM library](#)



## **Traypan® software for designing sandwich panels**

With TrayPan®, you can design metal faced sandwich panels made by Ruukki. A panel structure can be designed as a single- or multi-span construction. You can easily give, with a few parameters, both suction and pressure loads caused by the wind. The application also calculates the necessary fasteners.

[Go to Traypan®](#)

## **Technical documents**

Here you can find all technical documents related to Ruukki's sandwich panels. Documents are organised by document type. Click to enter document library.

**Product  
descriptions**



**Accessory  
documents**



**Load tables**



**Installation  
instructions**



**Maintenance  
instructions**



**Sound insulation  
values**



## **Certificates and approvals**

Here you can find all certificates and approvals related to Ruukki's sandwich panels. Documents are organised by document type. Click to enter document library.

**Declaration of  
performance**



**Environmental  
product declaration**



**Intruder resistance  
certificate**

