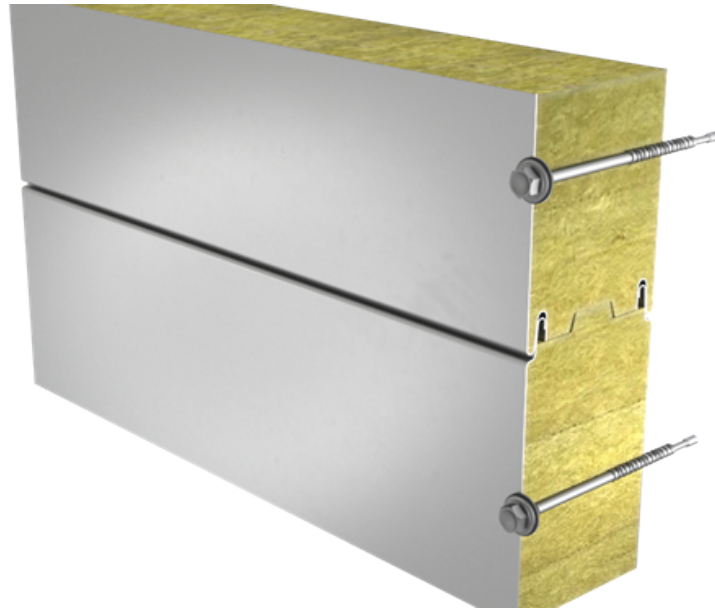


SANDWICH PANEL SPB WEE FOR EXTERNAL AND INTERNAL WALL



Sandwich panel **SPB WEE** is available in thicknesses 160 - 230 mm.

This product, made with the use of advanced production processes, offers **optimal performance of the designed solution**.

The filling consisting of non-combustible and environmentally friendly soft mineral wool with **low thermal conductivity coefficient** ensures **very good thermal insulation** of this panel. Properly milled core increases **air-tightness** and provides **high sound insulation**.

Application:

- External walls
- Internal walls

The information on our website is accurate to the best of our knowledge and understanding. Although every effort has been made to ensure accuracy, the company cannot accept any responsibility for any direct or indirect damages resulting from possible errors or incorrect application of the information of this publication. We reserve the right to make changes.

PROPERTIES

Model name

Sandwich panel SPB WEE for external and internal wall

| | |
|----------------------------------|----------|
| Standard module width | 1100 mm |
| Optional module width (B) | 1000 mm |
| Minimum length | 2000 mm |
| Maximum Length | 12000 mm |
| External facing thickness | 0.60 mm |
| Internal facing thickness | 0.50 mm |

PROPERTIES BY PANEL THICKNESS

| Thickness D (mm) | 160 | 170 | 180 | 200 | 230 |
|--|------------|------------|------------|------------|------------|
| Weight (kg/m ²) | 20.7 | 21.3 | 22.1 | 23.5 | 25.5 |
| U-value (W/m ² K) | 0.23 | 0.22 | 0.21 | 0.19 | 0.16 |
| Sound insulation Rw (dB) | 29 | 29 | 29 | 29 | 29 |
| Reaction to fire | A2-s1, d0 | A2-s1, d0 | A2-s1, d0 | A2-s1, d0 | A2-s1, d0 |
| Wall fire resistance values & max span horizontal / vertical orientation (m): | | | | | |
| EI 30 | 7.5 / - | 7.5 / - | 7.5 / - | 7.5 / - | 7.5 / - |
| EI 60 | 7.5 / - | 7.5 / - | 7.5 / - | 7.5 / - | 7.5 / - |

All properties are declared in accordance with EN 14509 and related standards.

Changes to sandwich panel fire resistance standards (wall applications)

COATINGS AND COLOURS

MATERIALS

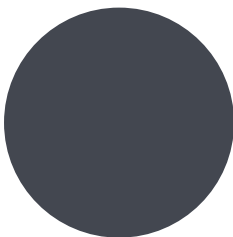
| Facing | Coating | Corrosivity category | UV resistance | Colours |
|----------|-----------|----------------------|---------------|--|
| External | HIARC | C3 | Ruv4 | RAL7035, RAL9006, RAL9007 |
| External | Polyester | C3 | Ruv2-3 | RAL1015, RAL5005, RAL7015, RAL7035, RAL9002, RAL9006, RAL9007, RAL9010 |
| Internal | Polyester | C3 | - | RAL9002, RAL9010 |

UV resistance describes how well the coating is able to keep its original colour and gloss levels in accordance with EN10169. The higher the class, the better the resistance.

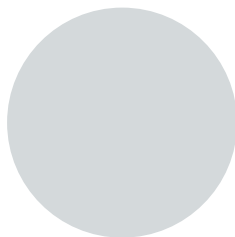
Corrosivity categories describe the outdoor climate conditions in accordance with EN12944. The higher the category, the more corrosive environment.

Read more about UV-resistance and corrosivity categories.

COLOURS



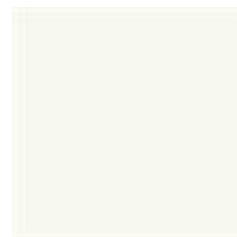
RAL 7015 SLATE GREY



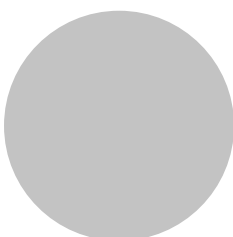
RAL7035 LIGHT GREY



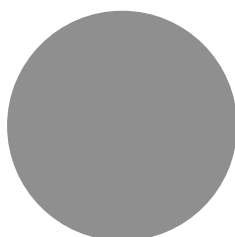
RAL9002 GREY WHITE



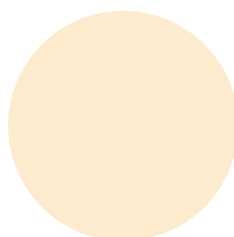
RAL9010 WHITE



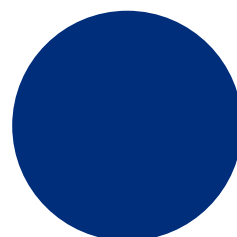
RAL9006 WHITE
ALUMINIUM



RAL9007 GREY
ALUMINIUM

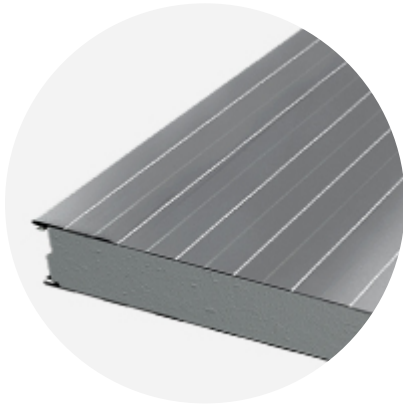


RAL1015 LIGHT IVORY

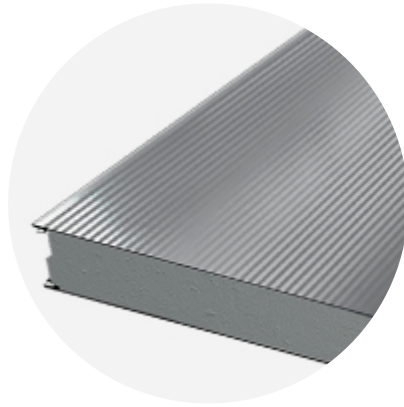


RAL5005 SIGNAL BLUE

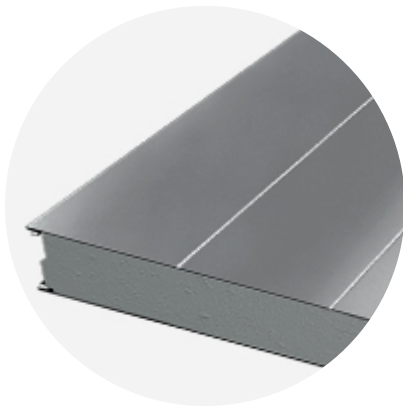
PROFILE OPTIONS



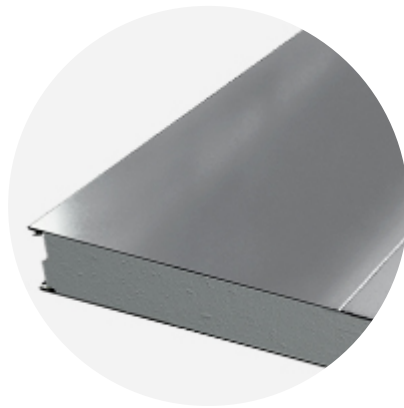
LINEAR



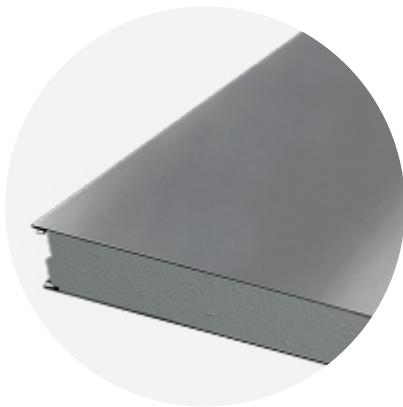
MICRO



RIB 275



RIB 550



FLAT

DESIGN TOOLS

To make both architectural and structural design work easier, with accurate product information in 3D form, we offer a selection of CAD / BIM -objects and software tools, which can be downloaded from the Software Toolbox portal.

READY MODELLED BIM OBJECTS

Download objects for ArchiCAD

Download objects for Revit

SOFTWARE TOOL TRAYPAN FOR CHOOSING THE OPTIMAL PANEL TYPE

User-friendly TrayPan software takes into account load, temperature, span, U-value, fire resistance and acoustics.

TrayPan contains two user interfaces:

- Optimisation tool for quick and easy pre-selection
- Designer version for detailed structural analysis.

Download Traypan

DETAIL DRAWING (.DWG)



05 MAY, 2016

Ruukki-Detail-drawings-SP2E-PIR_dwg_en
ZIP, 3.78 MB



05 MAY, 2016

Ruukki-Detail_drawings_SP2B_SP2C_SP2D_PIR_en
ZIP, 1.06 MB



05 MAY, 2016

Ruukki-Detail_drawings_SPB_SPC_SP2D_W_en
ZIP, 875.03 KB

LOAD & SPAN TABLES FOR DIMENSIONING PANELS AGAINST LOADS



05 MAY, 2016

Ruukki-load-tables-PU-core
PDF, 391.11 KB



05 MAY, 2016

Ruukki-sandwich-panels-span-tables-agripro-panels
PDF, 387.17 KB



05 MAY, 2016

Ruukki-load-tables-WE-ENG3
PDF, 295.41 KB



05 MAY, 2016

Ruukki-load-tables-W-ENG3
PDF, 315.97 KB



05 MAY, 2016

Ruukki-Sandwich-panels-Span_tables_SPF
PDF, 19.13 KB



05 MAY, 2016

ACCESSORIES

Accessories for sandwich panels include flashings, fasteners, gaskets, and sealing flanges.

These accessories ensure fast assembly, fastening reliability, joint tightness, and aesthetic improvement. They are suitable for external and internal wall surface construction, as well as roofs - for construction works of various sizes at any destination.



05 JUL, 2016

Ruukki accessories for sandwich panels 09.07.2015B
PDF, 3.46 MB

INSTRUCTIONS

ASSEMBLY INSTRUCTIONS

Assembly instructions document includes information about:

- Packing
- Transportation and unloading
- Storing
- Assembling



14 JUL, 2016

Ruukki-INOX-guidelines-for-PIR-sandwich-panels
PDF, 315.45 KB



05 MAY, 2016

Ruukki-Sandwich-panels-General_instructions_for_cold_storage_facilities
PDF, 1.58 MB



05 MAY, 2016

Ruukki-Assembly-instruction-for-sandwich-panels-CEE
PDF, 1.10 MB

MAINTENANCE INSTRUCTIONS

Maintenance instructions document contains information about:

- Washing
- Painting



06 MAY, 2016

Ruukki colour coated steel - Maintenance instructions
PDF, 600.37 KB



06 MAY, 2016

Ruukki powder coated facade claddings - Maintenance instructions
PDF, 602.18 KB

FACADE CLADDING INSTRUCTIONS

Ruukki Forma design instructions explain how to design façade cladding systems on top of Ruukki sandwich panels.



01 JUN, 2016

Ruukki Forma design instructions
PDF, 984.06 KB

CERTIFICATES & APPROVALS

DECLARATION OF PERFORMANCE



19 JUL, 2018

Declaration of Performance 42/PIR/OBO - Oborniki panels with PIR core (E-PIR, X-PIR, AgriPro)
PDF, 620.37 KB



18 JUL, 2018

Declaration of Performance 41/MW/OBO - Oborniki mineral wool cored panels
PDF, 209.45 KB



07 DEC, 2017

Declaration of Performance 37/X-PIR/OBO - SP2B X-PIR and SP2E X-PIR sandwich panels in stainless steel facing
PDF, 86.79 KB

ENVIRONMENTAL PRODUCT DECLARATION



05 MAY, 2016

Ruukki-Light-weight-sandwich-element-system
PDF, 5.97 MB