

Sandwich panel SPA F Patina

Sandwich panel SPA F Patina is available in thicknesses 150 - 230 mm.

With precise and Ruukki specific manufacturing tolerances, and factory-fitted seals on the panel joints, the Ruukki® Energy panel structure with its seams forms a very airtight solution. Together with Ruukki Airtightness package it's possible to achieve excellent airtightness to the entire building. This can decrease energy costs and CO2 emissions up to 30%. [Read more on airtightness package.](#)

Using Ruukki's solutions you can receive more credits in LEED and BREEAM certification systems. The panel's excellent quality ensures very good fire resistance properties, thus increasing fire safety of buildings. This panel type is intruder resistant in accordance with SSF 1047, classes 2 & 3 (see Certificates & approvals).

With the filling consisting of non-combustible and environmentally friendly hard mineral wool, this sandwich panel ensures excellent fire resistance. Properly milled core increases air-tightness and contributes to outstanding sound insulation.

Ruukki® Patina panel is made of natural and untreated Cor-Ten® steel. The unique joint structure of the panel prevents corrosion at the joints (patent pending). The new, innovative panel is also maintenance free since it repairs scratches over time itself.

Application:

- External walls (standard fix)

The method for joining Cor-Ten® steel-based sandwich panels, preventing corrosion formation in the joint, is patented.





[SEND CONTACT REQUEST](#)

The information on our website is accurate to the best of our knowledge and understanding. Although every effort has been made to ensure accuracy, the company cannot accept any responsibility for any direct or indirect damages resulting from possible errors or incorrect application of the information of this publication. We reserve the right to make changes.

Properties

Model name	Sandwich panel SPA F Patina
Standard module width	1200 mm
Minimum length	2000 mm
Maximum Length	13500 mm
External facing thickness	0.7 mm
Internal facing thickness	0.5 mm
Air Tightness	q50=0,01 m3/hm2 (pressure and suction)

Thickness D (mm)	150	200	230
Weight (kg/m ²)	27.7	33	36.9
U-value (W/m ² K)	0.29	0.22	0.19
Sound insulation Rw (dB)	31	31	31
Reaction to fire	A2-s1, d0	A2-s1, d0	A2-s1, d0
GWP-total, A1-A3 (kg CO ₂ ◇/m ²)	33,5	35,7	37,4
Estimated GWP (A1-A3) for Ruukki® LowCarbon (kg CO ₂ e/m ²)*	-	-	-

Wall fire resistance values & max span horizontal / vertical orientation (m):	150	200	230
EI 30	7.5 / 7.5	7.5 / 7.5	7.5 / 7.5
EI 60	7.5 / 7.5	7.5 / 7.5	7.5 / 7.5
EI 90	7.5 / 7.5	7.5 / 7.5	7.5 / 7.5
EI 120	6.0 / 7.5	6.0 / 7.5	6.0 / 7.5

Coatings and colors



External facing: Cor-Ten

Materials

Facing	Coating	Corrosivity category	UV resistance	Colours
External	Cor-Ten®	C3	-	-
Internal	Polyester	C3	-	RR20
Internal	Foodsafe laminate *	C4	-	White
Internal	Stainless steel	C4	-	-

**) optional material*

UV resistance describes how well the coating is able to keep its original colour and gloss levels in accordance with EN10169. The higher the class, the better the resistance.

Corrosivity categories describe the outdoor climate conditions in accordance with EN12944. The higher the category, the more corrosive environment.

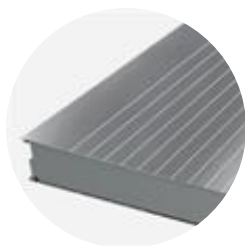
Surface variations



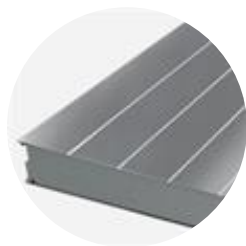
Flat F



Micro 15



Linear 50



Rib 150



Rib 200



Rib 600

Facing	Profile options
External	Flat F
Internal	Flat F, Micro 15, Linear 50, Rib 150, Rib 200, Rib 600

Design tools



Traypan® software for designing sandwich panels

With TrayPan®, you can design metal faced sandwich panels made by Ruukki. A panel structure can be designed as a single- or multi-span construction. You can easily give, with a few parameters, both suction and pressure loads caused by the wind. The application also calculates the necessary fasteners.

[Go to Traypan®](#)



Download BIM objects to your desktop

ProdLib brings Ruukki products as BIM models directly to your desktop in 3D form for design programs AutoCAD, Autodesk Revit, Archicad and Tekla Structures. Product libraries compile all necessary design models and detailed drawings in one place. Library updates are automatically notified, so as a user you can be sure that your product information is constantly up to date. ProdLib can also be used as a standalone desktop application.

[Go to BIM library](#)

Technical documents

Detail drawings



Sandwich panel SPA Patina - detail drawings 12_2021

DWG, 1.3 MB



Sandwich panel SPA Patina - detail drawings 12_2021

PDF, 1.4 MB

Installation and maintenance instruction



Sandwich panel Patina - installation and maintenance instructions 12_2023

PDF, 3.1 MB

Sound insulation values



Sound insulation values for sandwich panels and various structures 02_2023

PDF, 5.9 MB

Certificates and approvals

Environmental product declaration

Intruder resistance certificate



Sandwich panel Certificate on Burglary Protection Classes 1-3

PDF, 0.7 MB



SBSC Certificate Burglar protective walls SPA E LIFE, grade 2

PDF, 244.3 KB