

# Sandwich panel SP2C E-PIR

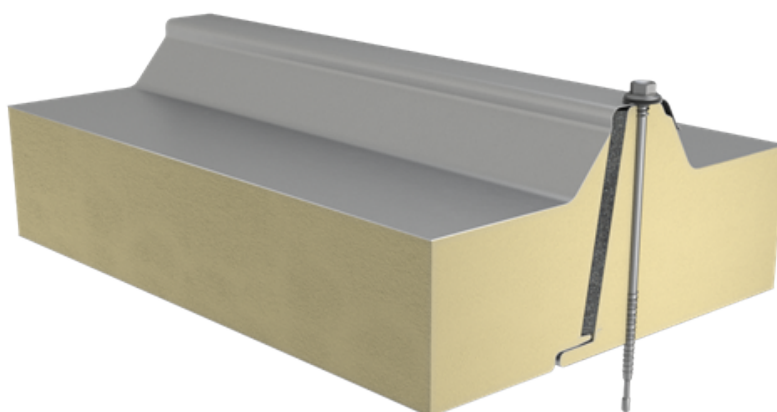
Sandwich panel **SP2C E-PIR** is available in thicknesses 100/60 - 210/170 mm.

It is a perfect solution for roofs, combining **high quality** with **very good technical properties**.

The core of this sandwich panel is made of rigid, HCFC-free, self-extinguishing and sustainable polyisocyanurate foam (PIR). Its **excellent thermal insulation properties** enable the decrease of panel thickness which transfers directly to lower transportation and assembly costs, as well as **significant savings** of building's life cycle costs.

## Application:

- Roofs



[SEND CONTACT REQUEST](#)

# Properties

|                           |                           |
|---------------------------|---------------------------|
| Model name                | Sandwich panel SP2C E-PIR |
| Standard module width     | 1000 mm                   |
| Minimum length            | 2000 mm                   |
| Maximum Length            | 18500 mm                  |
| External facing thickness | 0.5 mm                    |
| Internal facing thickness | 0.4 mm                    |
| External Fire Exposure    | Broof (t1, t2, t3)        |

| Thickness D (mm)  | 100/60   | 120/80   | 140/100  | 160/120  | 190/150 | 210/170  |
|---|----------|----------|----------|----------|---------|----------|
| Weight (kg/m <sup>2</sup> )   | 11.3     | 11.9     | 12.7     | 13.4     | 14.5    | 15.5     |
| U-value (W/m <sup>2</sup> K)  | 0.34     | 0.26     | 0.21     | 0.18     | 0.15    | 0.13     |
| Sound insulation Rw (dB)  | 24       | 24       | 24       | 24       | 24      | 24       |
| Reaction to fire  | B-s2, d0 | B-s2, d0 | B-s2, d0 | B-s2, d0 | B-s2,d0 | B-s2, d0 |
| GWP-total, A1-A3 (kg CO <sub>2</sub> ◇/m <sup>2</sup> )                       | 29,3     | 30,7     | 32,3     | 33,9     | 36,4    | 38,4     |
| GWP-total, A1-A3 (kg CO <sub>2</sub> e/m <sup>2</sup> ) for Ruukki® LowCarbon | -        | -        | -        | -        | -       | -        |

| Fire ratings classes (stitched joint on upper facing required) | 100/60 | 120/80 | 140/100 | 160/120 | 190/150 | 210/170 |
|--|--------|--------|---------|---------|---------|---------|
| REI 15   | -      | v      | v       | v       | V       | v       |
| REI 20   | -      | v      | v       | v       | V       | v       |
| RE 15  | -      | v      | v       | v       | V       | v       |
| RE 20  | -      | v      | v       | v       | V       | v       |
| RE 30  | -      | v      | v       | v       | V       | v       |

Detailed information regarding the application of fire resistance ratings can be obtained from Ruukki Sales.

All properties are declared in accordance with EN 14509 and related standards.

## Coatings and colors

### Materials

| Facing   | Coating                     | Gloss level (GU) | Corrosivity category | UV resistance | Colours  |
|----------|-----------------------------|------------------|----------------------|---------------|--|
| External | GreenCoat Pural BT Metallic | 40               | C4                   | Ruv4          | RAL9006 (RR40)   |
| External | Polyester                   | 35               | C3                   | Ruv2-3        | RAL1015 (RR807), RAL1021, RAL2003, RAL3000 (RR770), RAL3009 (RR29), RAL3013 (RR774), RAL5003 (RR4F8), RAL5005 (RR4A8), RAL5012 (RR408), RAL6011 (RR526), RAL6018 (RR5G8), RAL7015 (RR23), RAL7016 (RR288), RAL7035 (RR2B1), RAL7040 (RR287), RAL9002 (RR1G6), RAL9003 (RR106), RAL9006 (RR946), RAL9007, RAL9010 (RR1G5) |
| Internal | Polyester                   | 35               | C3                   | -             | RAL9002 (RR1G6), RAL9010 (RR1G5)   |

UV resistance describes how well the coating is able to keep its original colour and gloss levels in accordance with EN10169. The higher the class, the better the resistance.

Corrosivity categories describe the outdoor climate conditions in accordance with EN12944. The higher the category, the more corrosive environment.

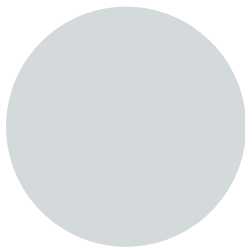
### Primary colors



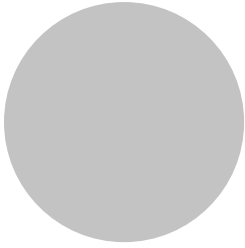
RAL9010 Pure white RR1G5



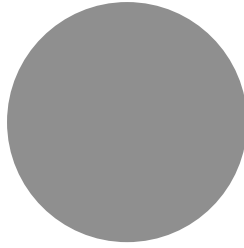
RAL9002 Grey white RR1G6



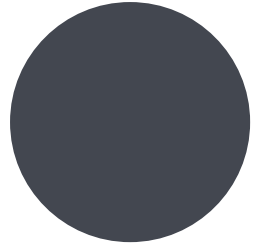
RAL7035 Light grey RR2B1



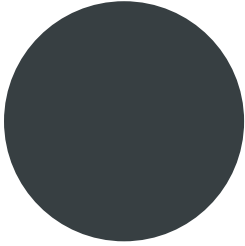
RAL9006 White aluminium RR946



RAL9007 Grey aluminium



RAL7015 Slate grey RR23

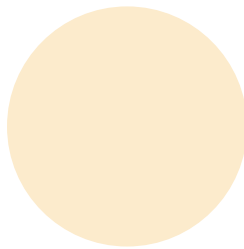


RAL7016 Anthracite grey RR288

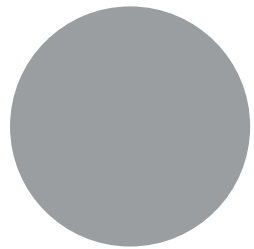
### Complementary colors



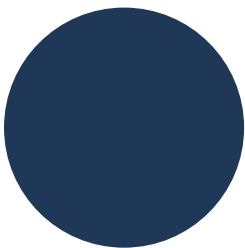
RAL9003 Signal white RR106



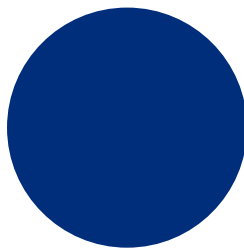
RAL1015 Light ivory RR807



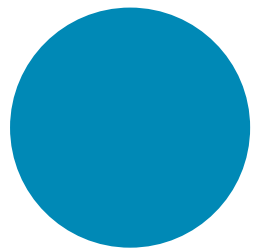
RAL7040 Window grey RR287



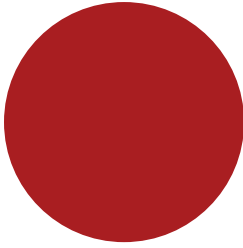
RAL5003 Sapphire blue RR4F8



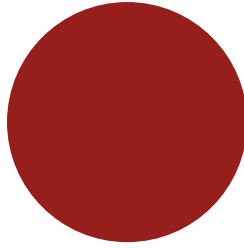
RAL5005 Signal blue



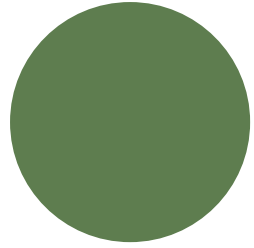
RAL 5012 Light blue RR408



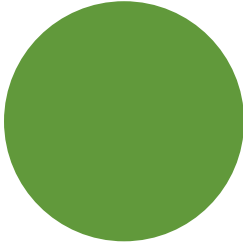
RAL3000 Flame Red RR770



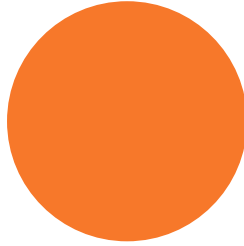
RAL3013 Tomato red RR774



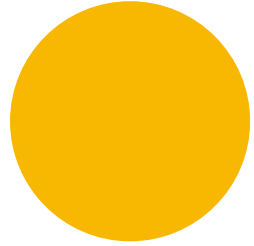
RAL6011 Reseda green RR526



RAL 6018 Yellow green RR5G8

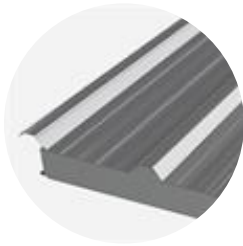


RAL2003 Pastel orange

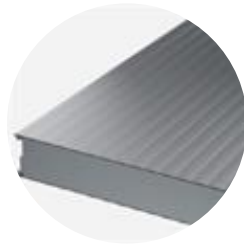


RAL1021 Colza yellow

## Profile options



Trapezoidal T



Linear L25

|                    |     |
|--------------------|-----|
| External profiling | T   |
| Internal profiling | L25 |

## Design tools



### Traypan® software for designing sandwich panels

With TrayPan®, you can design metal faced sandwich panels made by Ruukki. A panel structure can be designed as a single- or multi-span construction. You can easily give, with a few parameters, both suction and pressure loads caused by the wind. The application also calculates the necessary fasteners.

[Go to Traypan®](#)



### Download BIM objects to your desktop

ProdLib brings Ruukki products as BIM models directly to your desktop in 3D form for design programs AutoCAD, Autodesk Revit, Archicad and Tekla Structures. Product libraries compile all necessary design models and detailed drawings in one place. Library updates are automatically notified, so as a user you can be sure that your product information is constantly up to date. ProdLib can also be used as a standalone desktop application.

[Go to BIM library](#)

## Technical documents

Here you can find all technical documents related to Ruukki's sandwich panels. Documents are organised by document type. Click to enter document library.

**Product  
descriptions**



**Accessory  
documents**



**Load tables**



**Installation  
instructions**



**Maintenance  
instructions**



**Sound  
insulation  
values**



**Detail  
drawings**



## Certificates and approvals

Here you can find all certificates and approvals related to Ruukki's sandwich panels. Documents are organised by document type. Click to enter document library.

**Declaration of  
performance**



**Environmental  
product  
declaration**

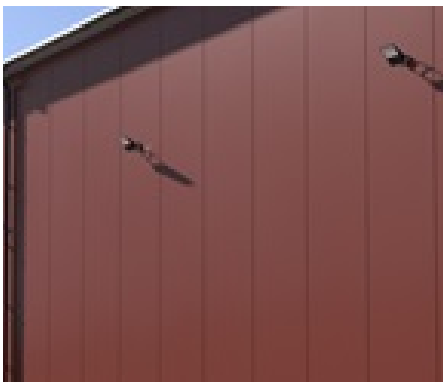


**Intruder  
resistance  
certificate**



---

## Visualization tool



### Get inspired with our Sandwich Panel visualization tool

With our interactive Visualization tool for Ruukki sandwich panels, you can easily explore and customize the perfect combination for your building project.

[Go to visualization tool](#)