

# Sandwich panel SP2B E-PIRE

Sandwich panel **SP2B E-PIRE** is available in thicknesses 80 - 120 mm.

This product, made with the use of advanced production processes, offers **optimal performance of the designed solution**.

The core of this sandwich panel is made of rigid, HCFC-free, self-extinguishing and sustainable polyisocyanurate foam (PIR). Its **excellent thermal insulation properties** enable the decrease of panel thickness which transfers directly to lower transportation and assembly costs, as well as **significant savings** of building's life cycle costs.

## Application:

- External walls
- Internal walls
- Ceilings



[SEND CONTACT REQUEST](#)

# Properties

Model name	Sandwich panel SP2B E-PIRE
Standard module width	1100 mm
Optional module width (B)	1000 (D = 80, 100, 110, 120 mm)
Minimum length	2000 mm
Maximum Length	18500 mm
External facing thickness	0.5 mm
Internal facing thickness	0.4 mm
External Fire Exposure	NRO

Thickness D (mm)	80	100	110	120
Weight (kg/m <sup>2</sup> )	11.4	12.1	12.4	12.8
U-value (W/m <sup>2</sup> K)	0.27	0.22	0.20	0.18
Sound insulation Rw (dB)	24	24	24	24
Reaction to fire	B-s2,d0	B-s2,d0	B-s2, d0	B-s2,d0
GWP-total, A1-A3 (kg CO <sub>2</sub> ◇/m <sup>2</sup> )	29,4	31,1	31,8	32,6
Estimated GWP (A1-A3) for Ruukki® LowCarbon (kg CO <sub>2</sub> e/m <sup>2</sup> )*	-	-	-	-

Wall fire resistance values & max span horizontal / vertical orientation (m):	80	100	110	120
EI 15	-	6.0/-	6.0/-	6.0/-
EW 15	-	6.0/-	6.0/-	6.0/-

Detailed information regarding the application of fire resistance ratings can be obtained from Ruukki Sales.

All properties are declared in accordance with EN 14509 and related standards.

# Coatings and colors

## Materials

Facing	Coating	Corrosion class	UV resistance	Colours
External	Polyester	C3	Ruv2-3	RAL1015 (RR807), RAL1021, RAL2003, RAL3000 (RR770), RAL3009 (RR29), RAL3013 (RR774), RAL5005 (RR4A8), RAL5012 (RR408), RAL6011 (RR526), RAL6018 (RR5G8), RAL7035 (RR2B1), RAL7040 (RR287), RAL9002 (RR1G6), RAL9003 (RR106), RAL9006 (RR946), RAL9007, RAL9010 (RR1G5)
Internal	Polyester	C3	-	RAL9002 (RR1G6), RAL9010 (RR1G5)
Internal	PVC laminate *	C4	-	White

*\*) optional material*

*UV resistance describes how well the coating is able to keep its original colour and gloss levels in accordance with EN10169. The higher the class, the better the resistance.*

*Corrosivity categories describe the outdoor climate conditions in accordance with EN12944. The higher the category, the more corrosive environment.*

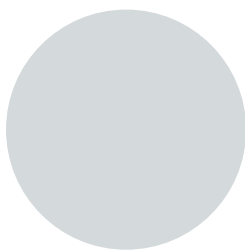
### Primary colors



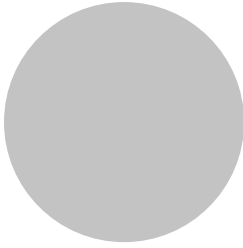
RAL9002 Grey white RR1G6



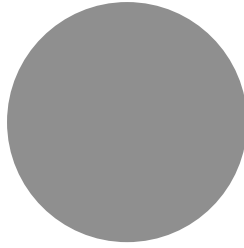
RAL9010 Pure white RR1G5



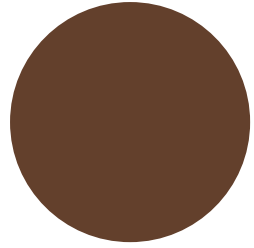
RAL7035 Light grey RR2B1



RAL9006 White aluminium RR946



RAL9007 Grey aluminium

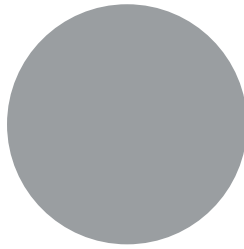


RAL3009 Oxide red RR29

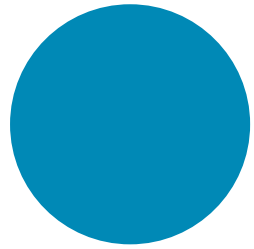
### Complementary colors



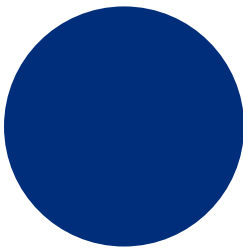
RAL9003 Signal white RR106



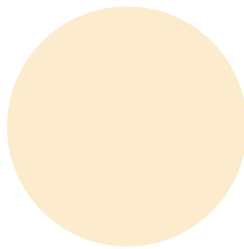
RAL7040 Window grey RR287



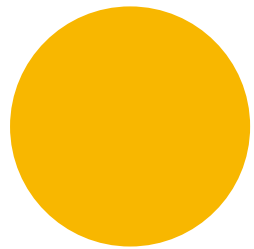
RAL 5012 Light blue RR408



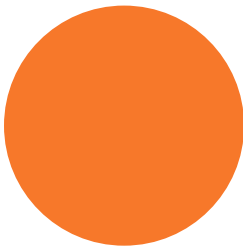
RAL5005 Signal blue



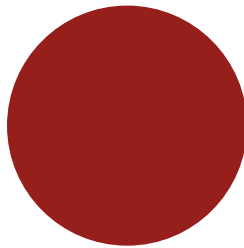
RAL1015 Light ivory RR807



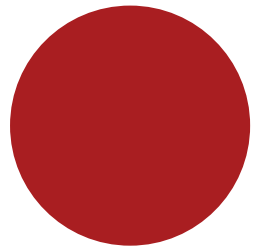
RAL1021 Colza yellow



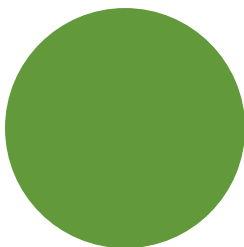
RAL2003 Pastel orange



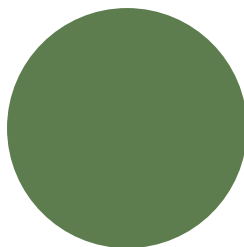
RAL3013 Tomato red RR774



RAL3000 Flame Red RR770

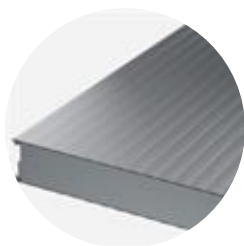


RAL 6018 Yellow green RR5G8

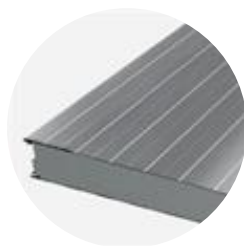


RAL6011 Reseda green RR526

## Profile options



Linear L25



Linear L



Micro M

Modular width	Facing	Profile options
1100mm	External	L, L25, M
	Internal	L25
1000mm	External	L, L25, M
	Internal	L25

## Design tools



### Traypan® software for designing sandwich panels

With TrayPan®, you can design metal faced sandwich panels made by Ruukki. A panel structure can be designed as a single- or multi-span construction. You can easily give, with a few parameters, both suction and pressure loads caused by the wind. The application also calculates the necessary fasteners.

[Go to Traypan®](#)



## Download BIM objects to your desktop

ProdLib brings Ruukki products as BIM models directly to your desktop in 3D form for design programs AutoCAD, Autodesk Revit, Archicad and Tekla Structures. Product libraries compile all necessary design models and detailed drawings in one place. Library updates are automatically notified, so as a user you can be sure that your product information is constantly up to date. ProdLib can also be used as a standalone desktop application.

[Go to BIM library](#)

## Technical documents

Here you can find all technical documents related to Ruukki's sandwich panels. Documents are organised by document type. Click to enter document library.

**Product  
descriptions**



**Accessory  
documents**



**Load tables**



**Installation  
instructions**



**Maintenance  
instructions**



**Sound  
insulation  
values**



**Detail  
drawings**



## Certificates and approvals

Here you can find all certificates and approvals related to Ruukki's sandwich panels. Documents are organised by document type. Click to enter document library.

**Declaration of  
performance**



**Environmental  
product  
declaration**



**Intruder  
resistance  
certificate**

