

# Sandwich panel nSPC W

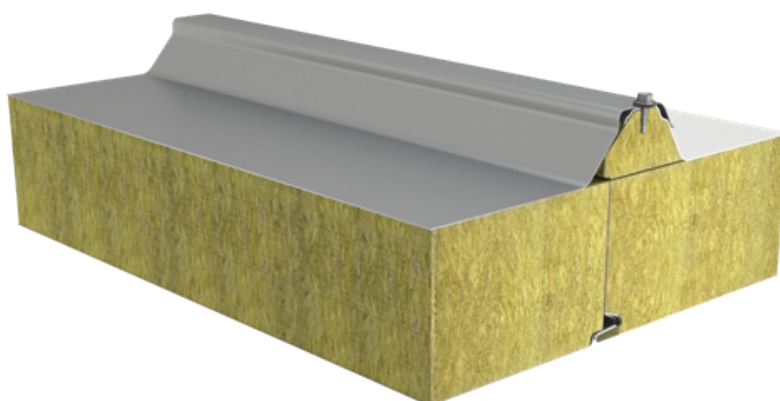
Sandwich panel **nSPC W** is available in thicknesses 140/100, 160/120 and 190/150 mm.

It is a perfect solution for roof construction, combining **high quality** with **very good technical properties**.

With the filling consisting of non-combustible and environmentally friendly hard mineral wool, this sandwich panel ensures **excellent fire resistance**. Properly milled core increases **air-tightness** and contributes to **outstanding sound insulation**.

## Application:

- Roofs



[SEND CONTACT REQUEST](#)

# Properties

Model name	Sandwich panel nSPC W
Standard module width	1000 mm
Minimum length	2000 mm
Maximum Length	12000 mm
External facing thickness	0.6 mm
Internal facing thickness	0.5 mm
External Fire Exposure	Broof (t1, t2, t3)

Thickness D (mm)	140/100	160/120	190/150
Weight (kg/m <sup>2</sup> )	22.8	24.2	28.5
U-value (W/m <sup>2</sup> K)	0.40	0.35	0.27
Sound insulation Rw (dB)	34	34	34
Reaction to fire	A2-s1,d0	A2-s1,d0	A2-s1,d0
GWP-total, A1-A3 (kg CO <sub>2</sub> ◇/m <sup>2</sup> )	34,3	35,3	36,8
Estimated GWP (A1-A3) for Ruukki® LowCarbon (kg CO <sub>2</sub> e/m <sup>2</sup> )*	-	-	-

Fire ratings classes (stitched joint on upper facing required)	140/100	160/120	190/150
REI 90	v	v	v
RE 120	v	v	v
RE 180	v	-	-
RE 240	v	-	-

Detailed information regarding the application of fire resistance ratings can be obtained from Ruukki Sales.

All properties are declared in accordance with EN 14509 and related standards.

## Coatings and colors

### Materials

Facing	Coating	Corrosivity category	UV resistance	Colours
External	Polyester	C3	Ruv2-3	RAL7016 (RR288), RAL7035 (RR2B1), RAL9002 (RR1G6), RAL9006 (RR946), RAL9007
Internal	Polyester	C3	-	RAL9002 (RR1G6), RAL9010 (RR1G5)

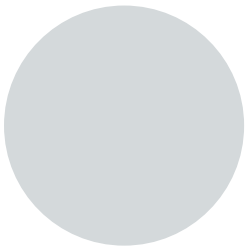
*UV resistance describes how well the coating is able to keep its original colour and gloss levels in accordance with EN10169. The higher the class, the better the resistance.*

*Corrosivity categories describe the outdoor climate conditions in accordance with EN12944. The higher the category, the more corrosive environment.*

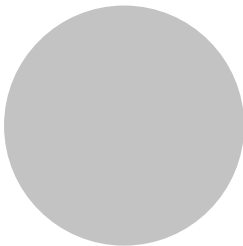
### Primary colors



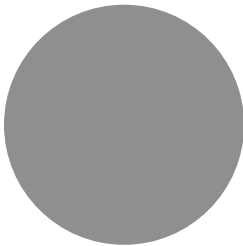
RAL9002 Grey white RR1G6



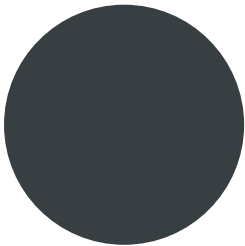
RAL7035 Light grey RR2B1



RAL9006 White aluminium RR946

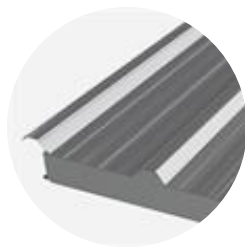


RAL9007 Grey aluminium

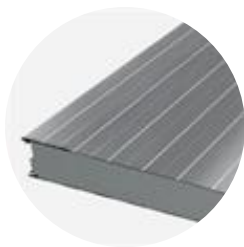


RAL7016 Anthracite grey RR288

Profile sheets



Trapezoidal T



Linear L

External profiling	T
Internal profiling	L

Design tools



Traypan® software for designing sandwich panels

With TrayPan®, you can design metal faced sandwich panels made by Ruukki. A panel structure can be designed as a single- or multi-span construction. You can easily give, with a few parameters, both suction and pressure loads caused by the wind. The application also calculates the necessary fasteners.

[Go to Traypan®](#)



Download BIM objects to your desktop

ProdLib brings Ruukki products as BIM models directly to your desktop in 3D form for design programs AutoCAD, Autodesk Revit, Archicad and Tekla Structures. Product libraries compile all necessary design models and detailed drawings in one place. Library updates are automatically notified, so as a user you can be sure that your product information is constantly up to date. ProdLib can also be used as a standalone desktop application.

[Go to BIM library](#)

## Technical documents

Here you can find all technical documents related to Ruukki's sandwich panels. Documents are organised by document type. Click to enter document library.

**Product  
descriptions**



**Accessory  
documents**



**Load tables**



**Installation  
instructions**



**Maintenance  
instructions**



**Sound  
insulation  
values**



**Detail  
drawings**



## Certificates and approvals

Here you can find all certificates and approvals related to Ruukki's sandwich panels. Documents are organised by document type. Click to enter document library.

**Declaration of  
performance**



**Environmental  
product  
declaration**



**Intruder  
resistance  
certificate**

