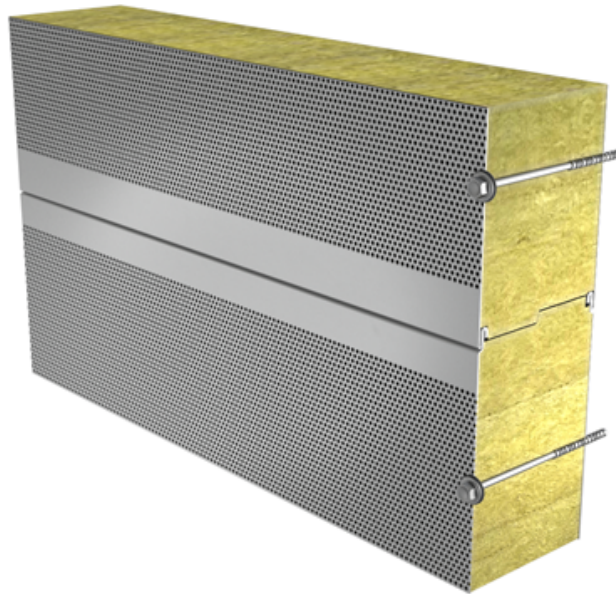


Ruukki Sono acoustic element

Our new sound-absorbing element is designed to deliver exceptional acoustic comfort, for versatile applications. The high-quality mineral wool core effectively dampens sound creating a quieter, more comfortable, and environmentally friendly space—whether in offices, sports and multipurpose buildings, or industrial facilities. Its robust construction and fire resistance provide added protection and peace of mind.

Application:

- Internal walls, one side perforated



[SEND CONTACT REQUEST](#)

Properties

Model name	Ruukki Sono acoustic element
Standard module width	1200 mm
Minimum length	2000 mm
Maximum length	9000 mm
External facing thickness	0,5 mm
Internal facing thickness*	0,5 mm

*) Ruukki Sono have internal facing perforated (30 %). External facing is without perforation.

Thickness	100	150
Weight (kg/m ²)	17.4	22.4
U-value (W/m ² K)	0.40	0.26
Sound insulation Rw (dB)	32	33
Reaction to fire	C-s1, d0	C-s1, d0
GWP-total, A1-A3 (kg CO ₂ ◇/m ²)	29.5	29.5
Impact resistance class (EN 13964:2014)	-	-

Wall fire resistance values & max span horizontal / vertical orientation (m):	100	150
EI 30	4.0/-	4.0/-

Detailed information regarding the application of fire resistance ratings can be obtained from Ruukki Sales.

All properties are declared in accordance with EN 14509 and related standards.

Sound absorption values

Absorption coefficient and class for construction

Sono 100 Class B, α_w 0,85

Sono 150 Class B, α_w 0,80

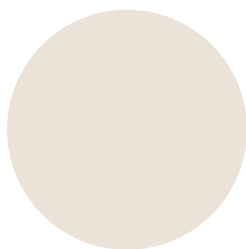
f(Hz)	Sono 100 (α_p)	Sono 150 (α_p)
125	0,55	0,55
250	0,85	0,75
500	0,85	0,80
1000	0,80	0,80
2000	0,80	0,80
4000	0,75	0,75

Materials

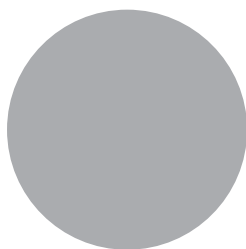
Facing	Coating	Gloss level (GU)	Corrosivity category	UV resistance	Colours
Internal	Polyester	35	C3	-	RR20, RR21
Internal (acoustic)*	Polyester	35	C2	-	RR20, RR21

* Suitable for use in normal dry indoor environments. RR20, RR21 stock colors, other options available by contacting a Ruukki sales representative.

Coatings and colours

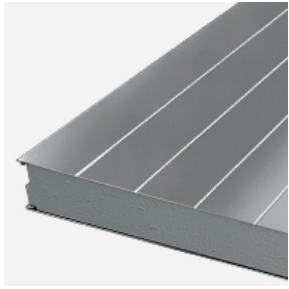


RR20 Winter White

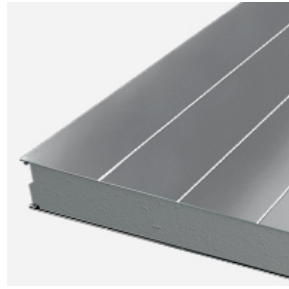


RR21 Pebble Grey

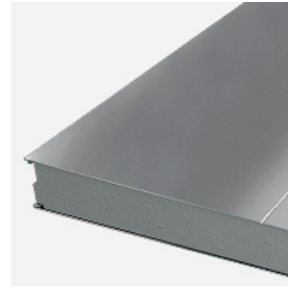
Profile variations



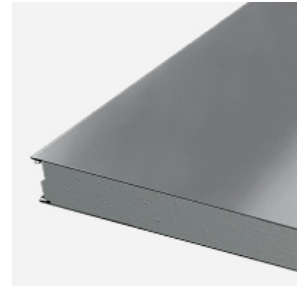
Rib 150



Rib 200

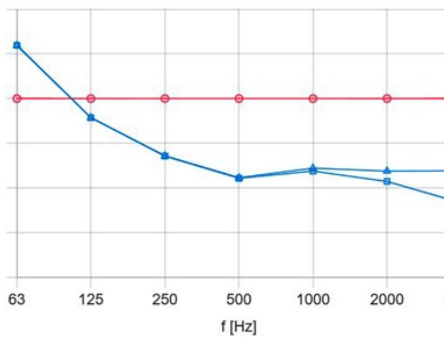


Rib 600



Flat F

Design tools



Ruukki Acoustic Estimator

Try our estimator for your next project. With our estimation tool you can calculate which product configuration provides you with optimal results.

[Go to estimation tool here](#)



Download BIM objects to your desktop

ProdLib brings Ruukki products as BIM models directly to your desktop in 3D form for design programs AutoCAD, Autodesk Revit, Archicad and Tekla Structures. Product libraries compile all necessary design models and detailed drawings in one place. Library updates are automatically notified, so as a user you can be sure that your product information is constantly up to date. ProdLib can also be used as a standalone desktop application.

[Go to BIM library](#)

Technical documents

Here you can find all technical documents related to Ruukki's sound environment solutions. Documents are organised by document type.

Brochures



Ruukki Sono acoustic element brochure

PDF, 1.0 MB