

Ruukki Classic C

Tough but beautiful

Ruukki Classic C is a high-class steel roof with unique look. Its profile resembles traditional seamed roofing but at the same time it is modern and stylish. It suits a variety of architectural styles and it is an excellent choice also for low-pitched roofs.

If you are looking for timeless and long-lasting beauty, choose Ruukki Classic. It's tough and easycare. It also has a very fine finish. You don't need to fasten any screws on the eaves, for example.

Ruukki Classic C is produced in three Ruukki Quality Classes - Ruukki 50, Ruukki 40 and Ruukki 30.

Ruukki Classic C 50 colour availability: RR2H3 Anthracite, RR29 Red, RR22 Grey, RR23 Dark grey, RR33 Black, RR887 Chocolate brown

Ruukki Classic C 40 and Ruukki Classic C 30 colour availability: RR2H3 Anthracite, RR29 Red, RR23 Dark grey, RR33 Black, RR887 Chocolate brown

Ruukki Classic C with Microprofillation (Ruukki Classic M) - Micro-profiling, this new way of covering, underlines the modern and elegant appearance of the roof and contributes to the rigidity of whole roof.

Ruukki Classic C 50 technical warranty 50 years and aesthetical warranty 25 years.

Ruukki Classic C 40 technical warranty 40 years and aesthetical warranty 15 years.

Ruukki Classic C 30 technical warranty 30 years and aesthetical warranty 10 years.

Ruukki Classic in Hiarc Matt coating - this specific Ruukki Classic type roof is made by 0,6mm steel and in RR41 Dark metallic silver colour in Ruukki 50 Quality Class. RR41 colour is only available for Ruukki Classic Hiarc Matt.

There is also additional sound insulation felt available for Ruukki Classic C and Ruukki Classic Hiarc Matt. Ruukki Classic Hiarc Matt is not available with microprofillated coating. See our pricelist for more



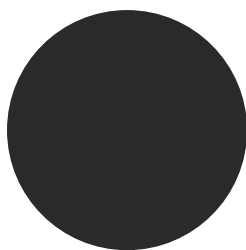
REQUEST QUOTATION

Properties

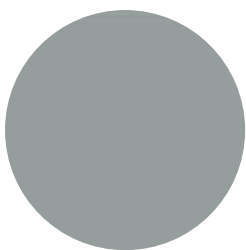


Product code	SR35-475C
Seam Height	32 mm
Effective width	475 mm
Total width	505 mm
Maximum length	10000 mm
Minimum length	800 mm
Material thickness / weight per m2	0.50 mm / 5.2 kg
Other technical information	Minimum slope 6° (Suggestive value. Please check your local regulations and instructions)

Coatings and colors



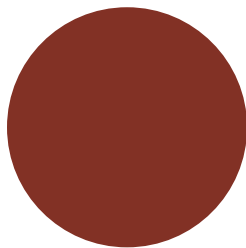
RR2H3 Anthracite



RR22 Grey



RR23 Dark Grey



RR29 Red



RR33 Black



RR887 Chocolate Brown

Download documents