

Liberta Elegant 550

Create a classic and harmonious surface with hidden fix Liberta Elegant 550 for ventilated steel and aluminium facade systems.

Ruukki® Emotion

Available also with perforation and backlighting.

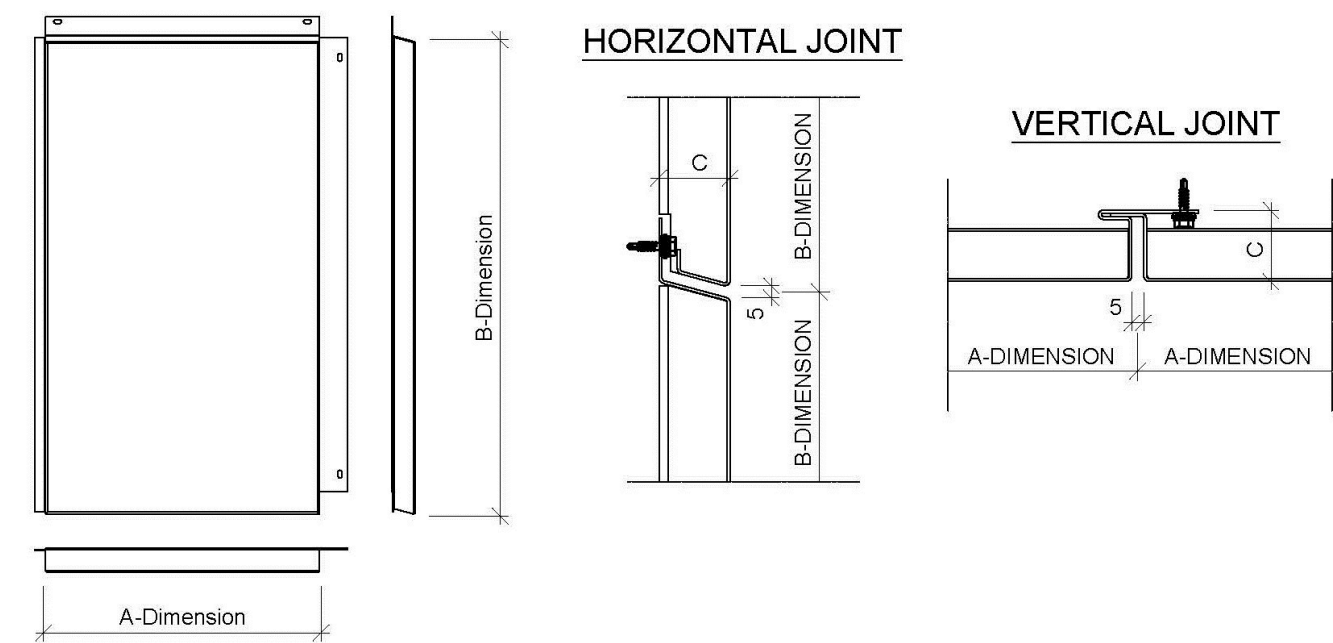
This product is optionally available with following sustainable features:

- Steel facings made of recycled steel (SSAB Zero) for significantly lower CO₂ emissions and high circularity (Ruukki LowCarbon)



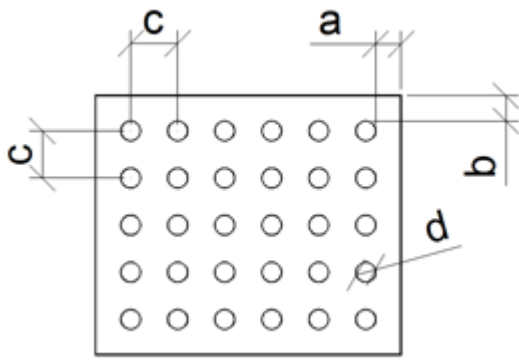
SEND CONTACT REQUEST

Properties



Model name	Liberta Elegant 550
Depth	25, 30 mm
Horizontal joint	5 mm
Vertical joint	5 mm
Fastening Style	Hidden

Perforation layout



Dimension/hole	mm
a	≥ 10
b	≥ 10
c	$\geq d+25$
d	16, 20, 30, 40, 50, 60

- Symmetrical perforation: Fully perforated in symmetrical square layout. Only 1 hole size (d) and distance (a, b, c) per product.
- Art perforation: Fully or partly perforated in freely chosen locations. All hole sizes (d) and distances (c) available per product.

Size table

Click on the picture to see full resolution.

Material:

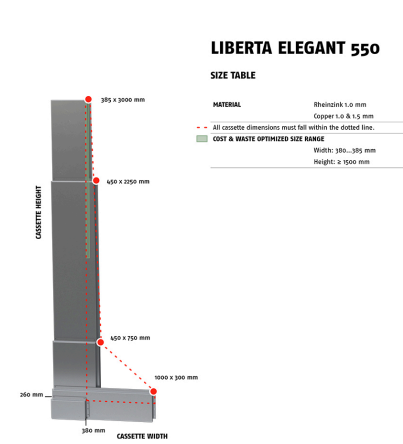
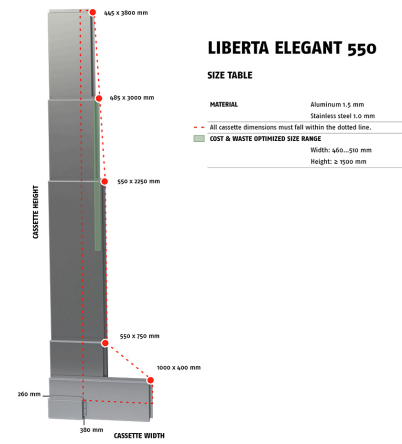
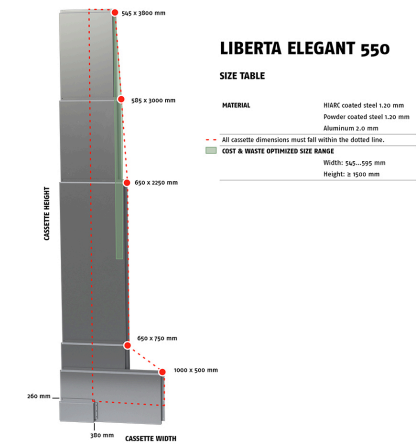
- HIARC coated steel 1.2 mm
- Powder coated steel 1.2 mm
- Aluminum 2.0 mm

Material:

- Aluminum 1.5 mm
- Stainless steel 1.0 mm

Material:

- Rheinzink 1.0 mm
- Copper 1.0 mm
- Copper 1.5 mm



Materials

Material	Material thickness (mm)	Weight (kg/m ²)	Surface treatment	GWP A1-A3 (kg CO ₂ equiv./m ²)	Available with perforation	Minimum order amount (m ²)	Reaction to fire
Zero Steel (LowCarbon)	1.2	11.4	GreenCoat Pural BT (Satin, Metallic)	~14.5 (estimation) *	No	900 (limited availability)	A1
Steel	1.2	11.4	GreenCoat Pural BT (Satin, Metallic)	35.5	No	Standard colours: No limitations Extended colours: 900	A1
	1.2	11.4	Powder coating	35.5	Yes	100	A2 - s1, d0
Aluminium	2.0	6.5	Powder coating	64.5	Yes	250	-
	2.0	6.5	PVDF coating	43.3	yes	250	-
	1.5	4.9	Powder coating	48.6	Yes	250	-
	1.5	4.9	PVDF coating	32.7	Yes	350	-

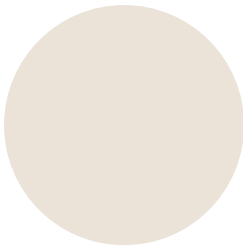
Rheinzink	1.0	8.7	Pre-patinated (no coating)	41.3	Limited	100	A1
Copper - Nordic Standard	1.5	16.2	Pre-patinated (no coating)	11.6	Limited	60	A1
	1.0	10.8	Pre-patinated (no coating)	7.74	Limited	60	A1
Copper - Nordic Green, Blue, Brown	1.5	16.2	Pre-patinated (no coating)	12.7	Limited	60	A1
	1.0	10.8	Pre-patinated (no coating)	8.49	Limited	60	A1
Brass - Nordic Brass	1.5	15.7	Pre-patinated (no coating)	28.5	Limited	60	A1
	1.0	10.5	Pre-patinated (no coating)	19.0	Limited	60	A1
Bronze - Nordic Bronze	1.5	15.7	Pre-patinated (no coating)	16.3	Limited	60	A1
	1.0	10.5	Pre-patinated (no coating)	10.9	Limited	60	A1
Bronze - Nordic Royal	1.5	15.7	Pre-patinated (no coating)	37.7	Limited	60	A1
	1.0	10.5	Pre-patinated (no coating)	25.2	Limited	60	A1
Stainless steel	1.0	9.5	Smooth (2B)	38.0	Limited	125	A1
	1.0	9.5	Wet grinded (4N)	38.0	Limited	125	A1

*) Calculations have been made using estimate for SSAB Zero™ recycled steel and data from Ruukki's current Environmental Product Declaration (EPD) documents. The calculations are based on current estimates (3/2025).

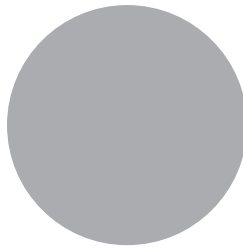
Coatings and colors

GreenCoat Pural BT (Standard colours)

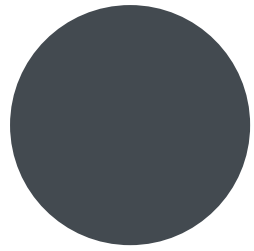
Gloss level: 20 GU (Satin) / 40 GU (Metallic)



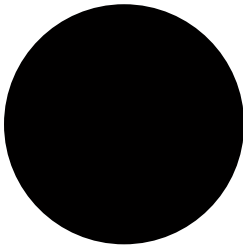
RR20 Winter white



RR21 Pebble grey



RR23 Mountain grey



RR33 Nordic night black



RR40 Metallic silver



RR41 Metallic dark silver



RR42 Metallic gold



RR45 Metallic titanium



RR979 Metallic copper

Extended colours

- GreenCoat Pural BT (steel)
- PVDF (aluminium)
- Powder paint (steel)
- Powder paint (aluminium)

BIM objects



Download BIM objects to your desktop

ProdLib brings Ruukki products as BIM models directly to your desktop in 3D form for design programs AutoCAD, Autodesk Revit, Archicad and Tekla Structures. Product libraries compile all necessary design models and detailed drawings in one place. Library updates are automatically notified, so as a user you can be sure that your product information is constantly up to date. ProdLib can also be used as a standalone desktop application.

[Go to BIM library](#)

Download documents

Declaration of performance



Declaration of Performance 25/PP/PAR - Cladding products

PDF, 43.7 KB

Order form



Ruukki Liberta rainscreen panels order form 2.4

XLSM, 5.1 MB

Maintenance instructions



Selection recommendation for color-coated products

PDF, 1.6 MB



Ruukki Cor-Ten facades - maintenance instructions

PDF, 70.3 KB



Ruukki powder coated facade claddings - Maintenance instructions

PDF, 0.6 MB



Ruukki colour coated steel - Maintenance instructions

PDF, 0.6 MB

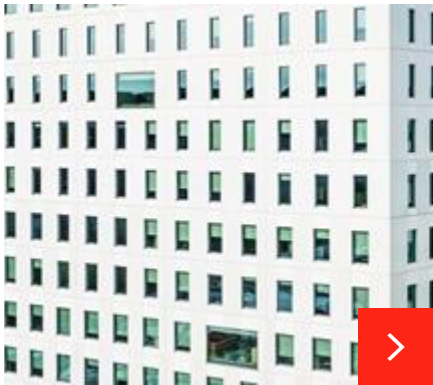
Accessory documents



Facade cladding accessories 02_2025

PDF, 4.1 MB

References



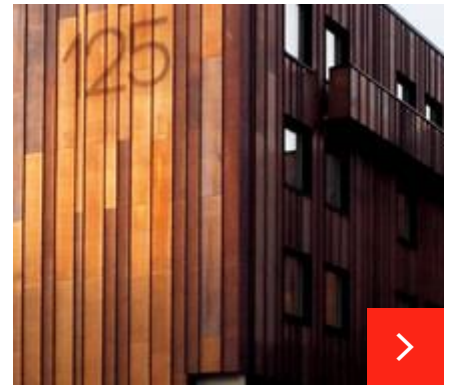
Tändstickan 3 - Office building in Sweden

Located in Gothenburg, Tändstickan 3 is a 12-storey office building. Ruukki supplied Liberta 550 rainscreen panels, some of which are perforated, for the projec...



Retroville shopping centre

This modern shopping centre in Kyiv features energy-efficient Ruukki Forma system with high air-tightness sandwich panels and a wide variety of new and innovati...



Residential building – Ulven Terrasse

Ulven Terrasse condominium, located some 3 kilometers to the northeast of Oslo city center, consists of five buildings comprising 215 apartments.



Kuopion Veturi, apartment building

We delivered vertically installed Liberta® Elegant 550 panels with hidden brackets to the site. The facade cladding system creates reflective and gleaming surfa...



Swimming hall in Täby, Sweden

The façade's white, backlit, and perforated steel cassettes contrast with the polished terrazzo and shimmering aggregate of the black concrete. In the dark, Täb...

[See all rainscreen panel references](#)

Visualization tool



Visualize your idea

Get inspired on how our façade cladding products come live in a building façade. Find your own combination of surface structures, patterns, colors and materials.

[Go to visualization tool](#)