

Liberta Elegant 500

Create a classic and harmonious surface with hidden fix Liberta Elegant 500 for ventilated steel and aluminium facade systems.

Ruukki® Emotion

Available also with perforation and backlighting.

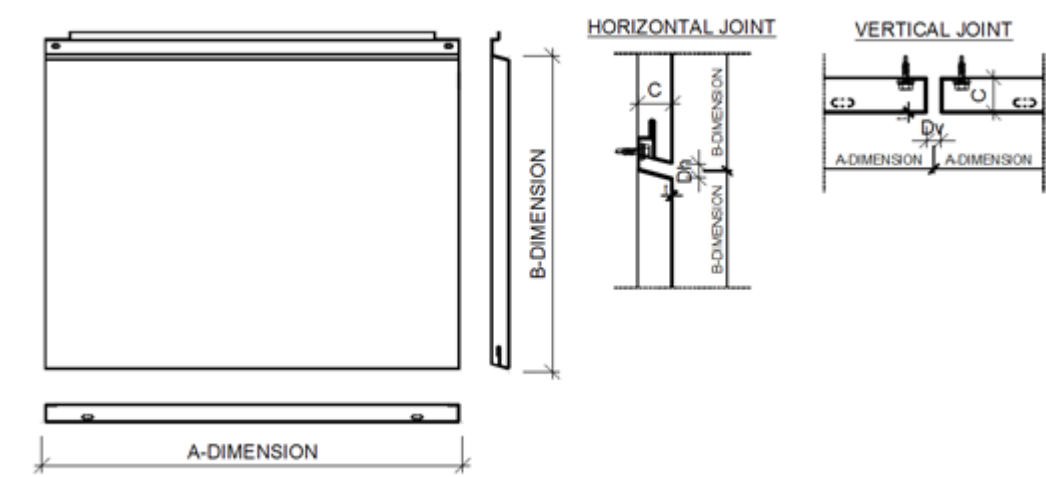
This product is optionally available with following sustainable features:

- Steel facings made of recycled steel (SSAB Zero) for significantly lower CO₂ emissions and high circularity (Ruukki LowCarbon)



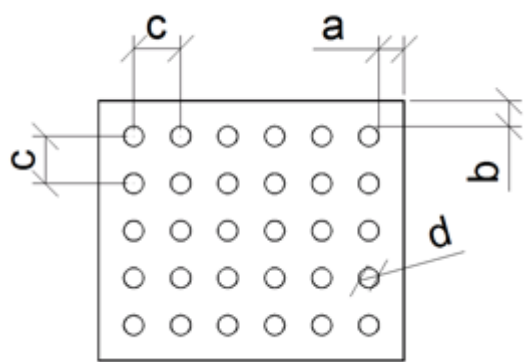
SEND CONTACT REQUEST

Properties



Model name	Liberta Elegant 500
Depth	25, 30 mm
Horizontal joint	5, 10, 15, 20, 25, 30 mm
Vertical joint	5, 10, 15, 20, 25, 30 mm
Fastening Style	Hidden

Perforation layout



Dimension/hole	mm
a	≥10

b	≥10
c	≥ d+25
d	16, 20, 30, 40, 50, 60

Symmetrical perforation: Fully perforated in symmetrical square layout. Only 1 hole size (d) and distance (a, b, c) per product.

Art perforation: Fully or partly perforated in freely chosen locations. All hole sizes (d) and distances (c) available per product.

Size table

Click on the picture to see full resolution.

Material:

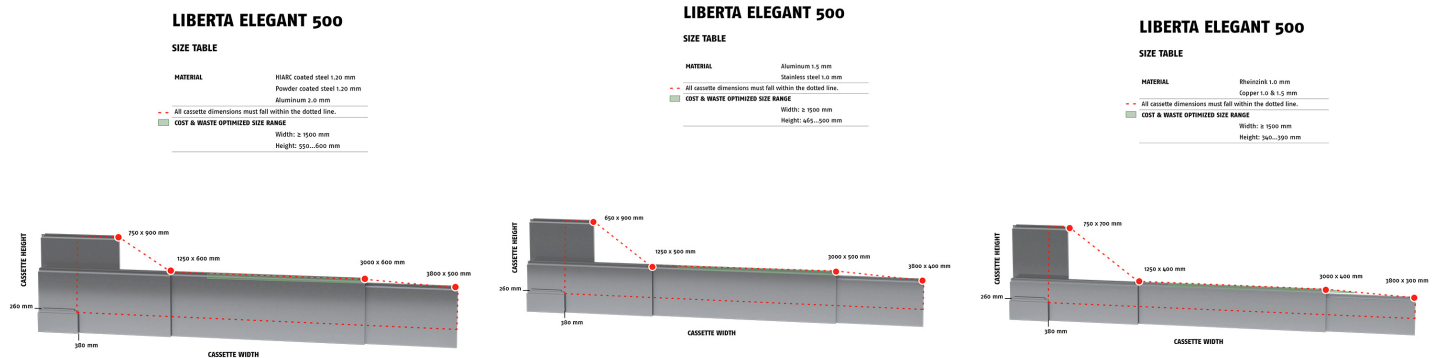
- HIARC coated steel 1.2 mm
- Powder coated steel 1.2 mm
- Aluminum 2.0 mm

Material:

- Aluminum 1.5 mm
- Stainless steel 1.0 mm

Material:

- Rheinzink 1.0 mm
- Copper 1.0 mm
- Copper 1.5 mm



Materials

Material	Material thickness (mm)	Weight (kg/m ²)	Surface treatment	GWP A1-A3 (kg CO ₂ equiv./m ²)	Available with perforation	Minimum order amount (m ²)	Reaction to fire
----------	-------------------------	-----------------------------	-------------------	---	----------------------------	--	------------------

Zero Steel (LowCarbon)	1.2	11.4	GreenCoat Pural BT (Satin, Metallic)	~14.5 (estimation) *	No	900 (limited availability)	A1
Steel	1.2	11.4	GreenCoat Pural BT (Satin, Metallic)	35.5	No	Standard colours: No limitations Extended colours: 900	A1
	1.2	11.4	Powder coating	35.5	Yes	100	A2 - s1, d0
Aluminium	2.0	6.5	Powder coating	64.5	Yes	250	-
	2.0	6.5	PVDF coating	43.3	yes	250	-
	1.5	4.9	Powder coating	48.6	Yes	250	-
	1.5	4.9	PVDF coating	32.7	Yes	350	-
Rheinzink	1.0	8.7	Pre-patinated (no coating)	41.3	Limited	100	A1
Copper - Nordic Standard	1.5	16.2	Pre-patinated (no coating)	11.6	Limited	60	A1
	1.0	10.8	Pre-patinated (no coating)	7.74	Limited	60	A1
Copper - Nordic Green, Blue or Brown	1.5	16.2	Pre-patinated (no coating)	12.7	Limited	60	A1
	1.0	10.8	Pre-patinated (no coating)	8.49	Limited	60	A1
Brass - Nordic Brass	1.5	15.7	Pre-patinated (no coating)	28.5	Limited	60	A1
	1.0	10.5	Pre-patinated (no coating)	19.0	Limited	60	A1
Bronze - Nordic Bronze	1.5	15.7	Pre-patinated (no coating)	16.3	Limited	60	A1
	1.0	10.5	Pre-patinated (no coating)	10.9	Limited	60	A1
Bronze - Nordic Royal	1.5	15.7	Pre-patinated (no coating)	37.7	Limited	60	A1
	1.0	10.5	Pre-patinated (no coating)	25.2	Limited	60	A1

Stainless steel	1.0	9.5	Smooth (2B)	38.0	Limited	125	A1
	1.0	9.5	Wet grinded (4N)	38.0	Limited	125	A1

*) Calculations have been made using estimate for SSAB Zero™ recycled steel and data from Ruukki’s current Environmental Product Declaration (EPD) documents. The calculations are based on current estimates (3/2025).

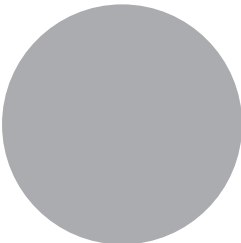
Coatings and colors

GreenCoat Pural BT (Standard colours)

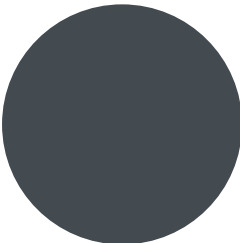
Gloss level: 20 GU (Satin) / 40 GU (Metallic)



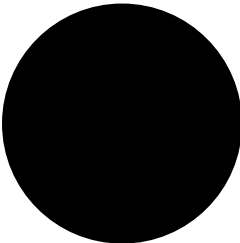
RR20 Winter white



RR21 Pebble grey



RR23 Mountain grey



RR33 Nordic night black



RR40 Metallic silver



RR41 Metallic dark silver



RR42 Metallic gold



RR45 Metallic titanium



RR979 Metallic copper

Extended colours

- [GreenCoat Pural BT \(steel\)](#)
- [PVDF \(aluminium\)](#)
- [Powder paint \(steel\)](#)
- [Powder paint \(aluminium\)](#)

BIM objects



Download BIM objects to your desktop

ProdLib brings Ruukki products as BIM models directly to your desktop in 3D form for design programs AutoCAD, Autodesk Revit, Archicad and Tekla Structures. Product libraries compile all necessary design models and detailed drawings in one place. Library updates are automatically notified, so as a user you can be sure that your product information is constantly up to date. ProdLib can also be used as a standalone desktop application.

[Go to BIM library](#)

Download documents

Declaration of performance



[Declaration of Performance 25/PP/PAR - Cladding products](#)

PDF, 43.7 KB

Order form



[Ruukki Liberta rainscreen panels order form 2.4](#)

XLSM, 5.1 MB

Maintenance instructions



[Selection recommendation for color-coated products](#)

PDF, 1.6 MB



Ruukki Cor-Ten facades - maintenance instructions

PDF, 70.3 KB



Ruukki powder coated facade claddings - Maintenance instructions

PDF, 0.6 MB



Ruukki colour coated steel - Maintenance instructions

PDF, 0.6 MB

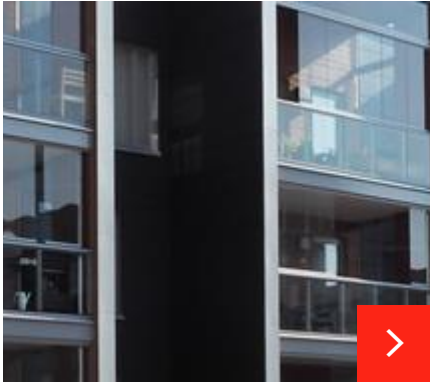
Accessory documents



Facade cladding accessories 11_2025

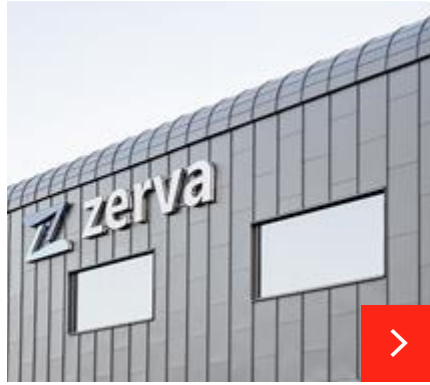
PDF, 2.8 MB

References



Meripihka and Meriluoto – housing companies

Ruukki delivered steel façades to the Meripihka and Meriluoto housing companies being built in Helsinki's Jätkäsaari. Approximately 3,000 square metres of Liber...



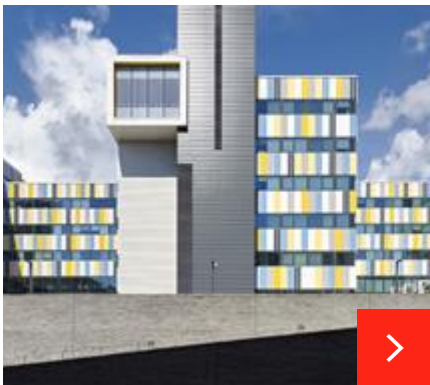
Zerva

The western facade of the building is equipped with the Ruukki Emotion facade system. The steel facade cassettes are perforated, so that the wall surface create...



Turku Energia – steam generation plant

An artwork, Water Memory, by Finnish artist Mauri Kosonen, forms part of the northwest façade. The artwork has been created using Ruukki Emotion product, where ...



Eventes Business Garden Espoo

Eventes Business Garden located near the Iso Omena Shopping Centre in Espoo is an impressive office building that combines various steel facades in an interesti...



Hekamerk Office and Warehouse Building, Estonia

The striking exterior façade of the Hekamerk office and warehouse building is adorned with Ruukki Liberta 500 façade cassettes, featuring the design profile Des...

[See all rainscreen panel references](#)

Visualization tool



Visualize your idea

Get inspired on how our façade cladding products come live in a building façade. Find your own combination of surface structures, patterns, colors and materials.

[Go to visualization tool](#)