

## Liberta Cor-Ten 700

Create a harmonious, rusty layout with Liberta Cor-Ten 700 for ventilated Cor-Ten facade systems.

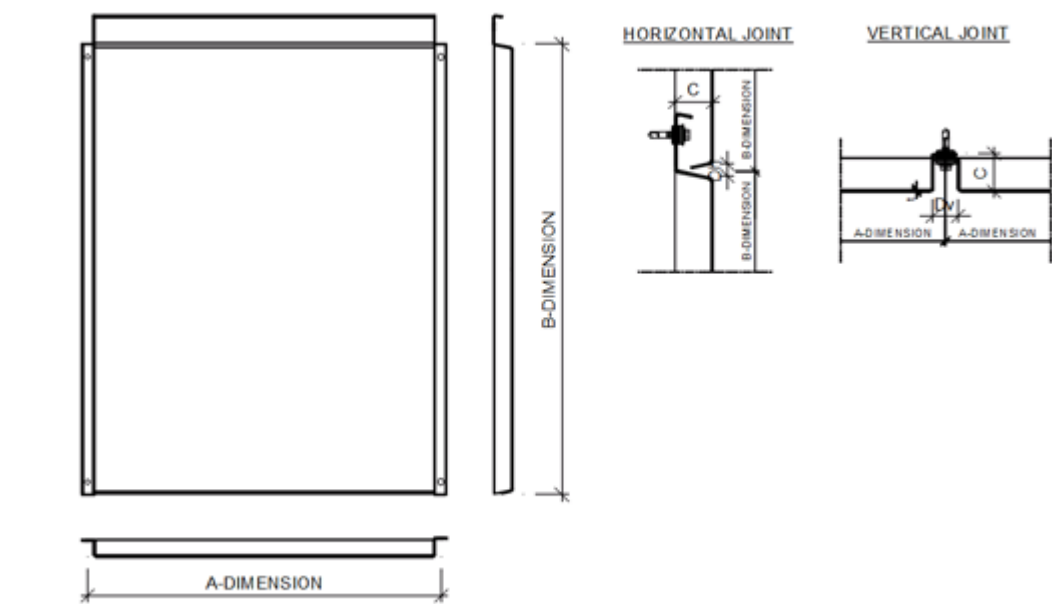
### **Ruukki® Emotion**

Available also with perforation and backlighting.



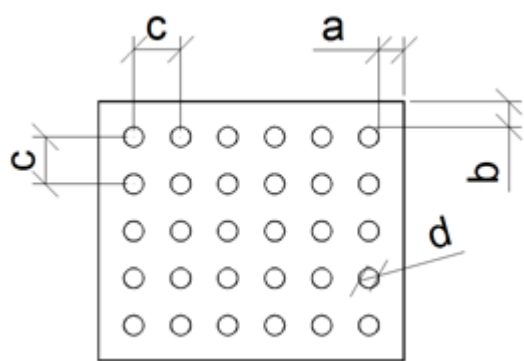
**SEND CONTACT REQUEST**

# Properties



Model name	Liberta Cor-Ten 700
Depth	30 mm
Horizontal joint	10 mm
Vertical joint	20, 25, 30 mm
Fastening Style	Visible

## Perforation layout



Dimension/hole	mm
----------------	----

a	$\geq 10$
b	$\geq 10$
c	$\geq d+25$
d	16, 20, 30, 40, 50, 60

Due to its unique chemical composition, Cor-Ten weather-resistant structural steel sheet has a significantly better ability to resist atmospheric corrosion than similar general structural steels. Weather-resistant steel is used in architectural applications without requiring any separate surface treatment. Use of weather-resistant steel thus eliminates the need for surface treatments during the manufacturing and operational periods, in turn lowering the environmental load and costs throughout the product's life cycle.

The weather resistance of the product is due to its oxide layer i.e. the patina which forms on the steel surface which is resistant to the action of alloys and has low oxygen permeability. The oxide layer is created when weather-resistant steel is wetted and dried repeatedly. The protective surface layer forms in normal weather conditions within 18...36 months. The patina layer is initially reddish brown in colour, becoming darker in tone over the course of time. In industrial environments the patina forms more rapidly on the steel and darkens more than in cleaner rural environments. The protective patina layer cannot form, however, if the surface of the steel is continuously damp or dirty.

Cor-Ten A grade steel is used for the manufacture of panels (S355J0WP-COR-TEN A).

## **BIM objects**

---

Powered by



## Download documents

### Declaration of performance



**Ruukki Cor-Ten facades - Certification**

PDF, 31.8 KB

## Order form



### **Ruukki Liberta rainscreen panels order form 2.3.5.3**

XLSM, 5.2 MB

## Maintenance instructions



### **Ruukki Cor-Ten facades - maintenance instructions**

PDF, 70.3 KB



### **Ruukki powder coated facade claddings - Maintenance instructions**

PDF, 0.6 MB



### **Ruukki colour coated steel - Maintenance instructions**

PDF, 0.6 MB

## Accessory documents



### **FI\_Julkisivuverhoukset\_tarvikkeet\_03\_2020**

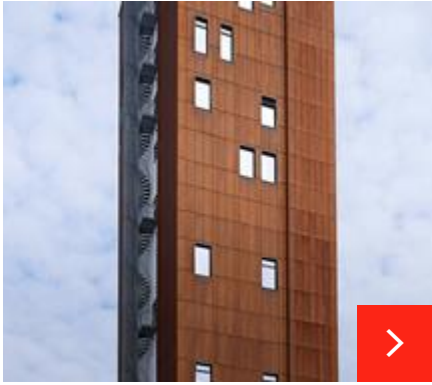
, 0.0 BYTES



### **Facade cladding accessories 10\_2022**

PDF, 4.2 MB

# References



## Tårnet Kulturarena office building in Norway

For this building we delivered a Ruukki Forma® façade system including sandwich panels and the façade claddings.



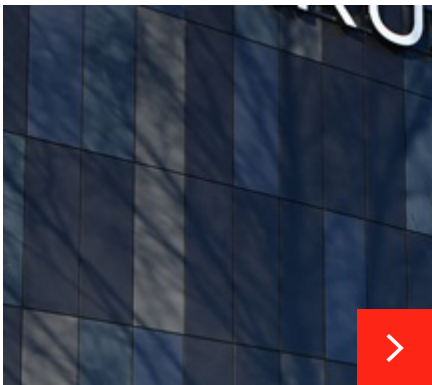
## Modern apartment building in Estonia

The main entrance and parking spaces attract attention with Art perforated Liberta Cor-Ten 700 cassettes with backlighting. Rye straws fit to the surroundings p...



## LUT University – Public construction

During the years 2016–2018, the main building of LUT University in Lappeenranta, specialising in technical and economic research and education, was completely o...



## Varuste.net commercial building in Finland

"We have been installing Ruukki's products for a long time. The smoothness of installation work on the construction site was guaranteed by the coordination of d...

[See all rainscreen panel references](#)

# Visualization tool



## Visualize your idea

Get inspired on how our façade cladding products come live in a building façade. Find your own combination of surface structures, patterns, colors and materials.

[Go to visualization tool](#)