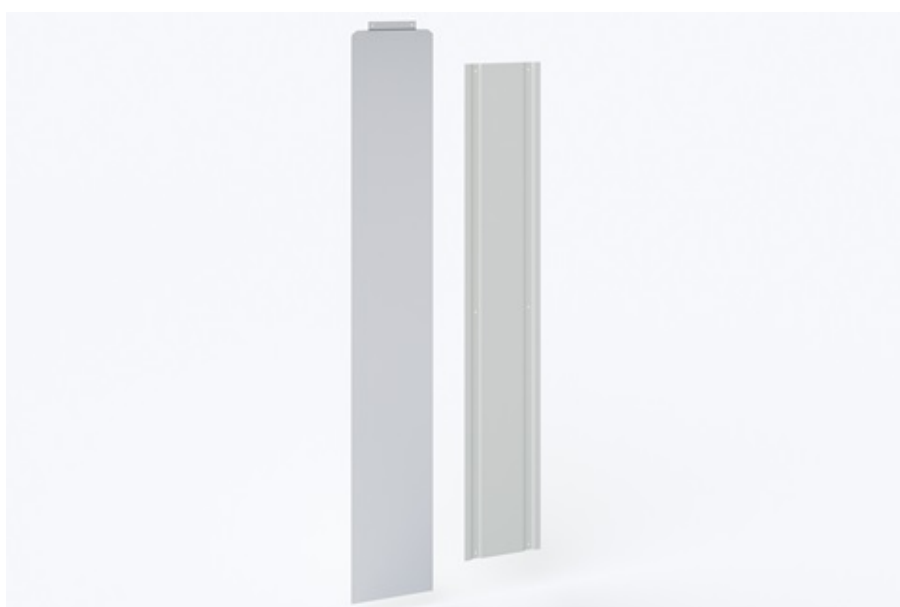


Invisible vertical joint flashing EA1JVI

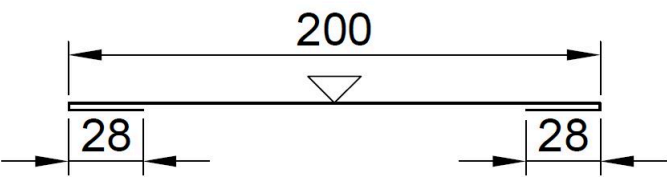
Invisible vertical joint flashing EA1JVI for listing the vertical seam between the SPA panels without visible fixing screws. Flush mounting washers are used to fasten the panels according to Invisible flashing details and instructions.

Invisible vertical base flashing EA1JVB4 is required to attach this list. In this case, flush mounting plate is used to fasten the panels according to Invisible list details and instructions.



[SEND CONTACT REQUEST](#)

Properties



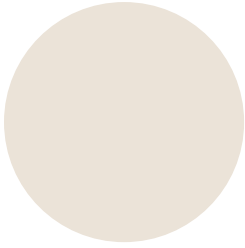
Product name	Invisible vertical seam flashing EA1JVI
Length	1240 mm
Material thickness	0,6 mm
Weight	1.4 kg/pcs

Note:

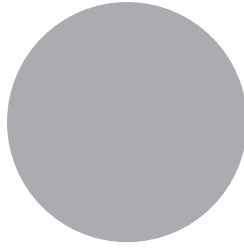
- There are two mounting holes at the top of the list, only to one of which becomes a screw (1 screw / strip).
- Recommended screw type: List screw S1E42013GE 1000.
- All list screws are hidden after installation.
- Invisible vertical base flashing EA1JVB4 is required to attach this list.
- The length of the list includes an overlap of 40 mm.

Coatings, profiling and colors

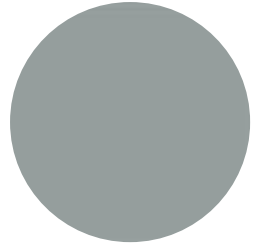
Coating	Thickness (mm)
GreenCoat Pural BT	RR20, RR21, RR22, RR23, RR29, RR33, RR35, RR40, RR41, RR45
Polyester	RR20, RR21, RR946



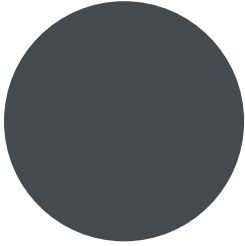
RR20 White



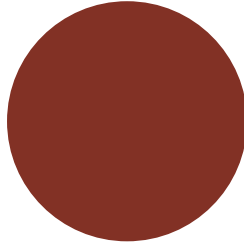
RR21 Light Grey



RR22 Grey



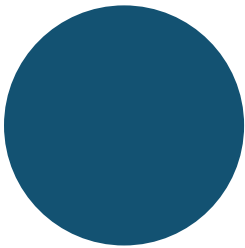
Graphite ~ RAL 7024



RR29 Red



RR33 Black



RR35 Blue



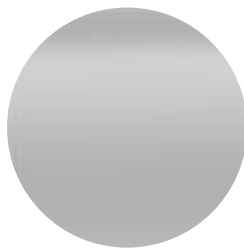
RR40 Silver



RR41 Dark silver



RR45 Metallic graphite



RR946 Metallic silver