

# Invisible outer corner flashing EA1ECI

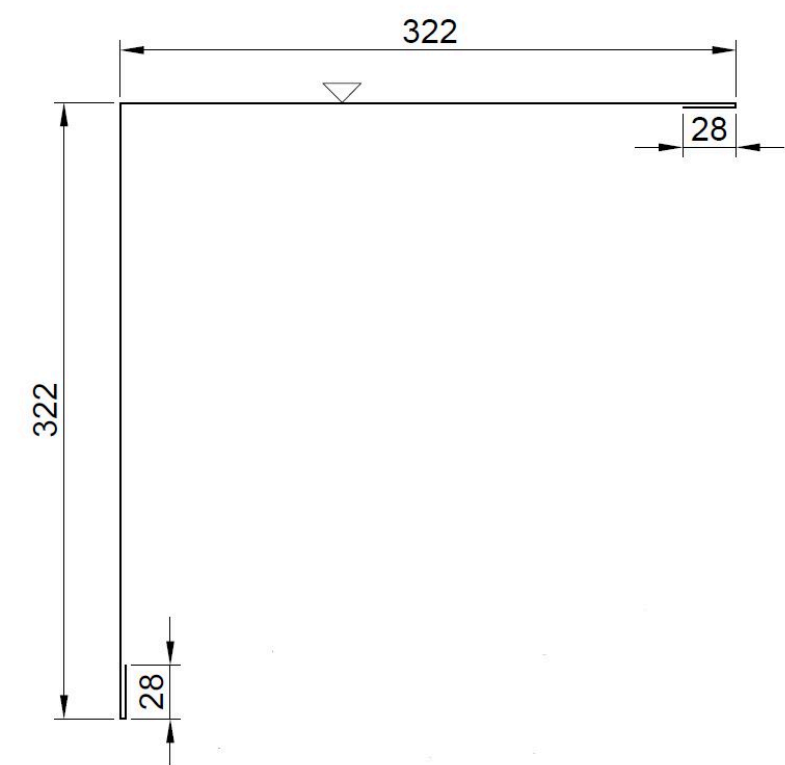
Invisible outer corner flashing EA1ECI for listing the vertical seam between the SPA panels in the outer corner without visible fixing screws. Flush mounting washers are used to fasten the panels according to Invisible list details and instructions.

The Invisible EA1EXB4 vertical corner flashing is required to attach this list. In this case, flush mounting washers are used to fasten the panels in accordance with Invisible list details and instructions.



**SEND CONTACT REQUEST**

# Properties



Product name	Invisible outer corner flashing EA1ECI
Length	1245 mm
Material thickness	0,6 mm
Weight	4.1 kg/pcs

## Note:

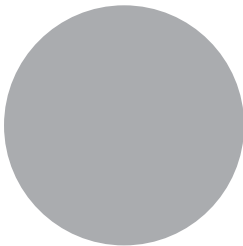
- For unobtrusively listing of the vertical seam between the SPA panels (150-200 mm) in the outer corners of the building
- At the top of the list there are three mounting holes / side, of which to only one becomes a screw (1 screw / side).
- Recommended screw type: List screw S1E42013GE 1000.
- All list screws are hidden after installation.
- The Invisible EA1EXB4 vertical base flashing is required to attach this list.
- The length of the list includes an overlap of 40 mm.

# Coatings, profiling and colors

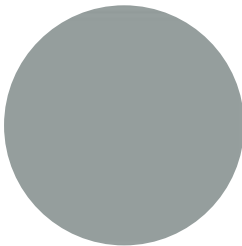
Coating	Thickness (mm)
GreenCoat Pural BT	RR20, RR21, RR22, RR23, RR29, RR33, RR35, RR40, RR41, RR45
Polyester	RR20, RR21, RR946



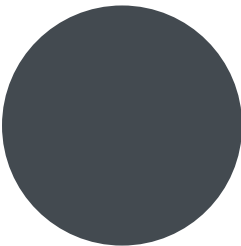
RR20 White



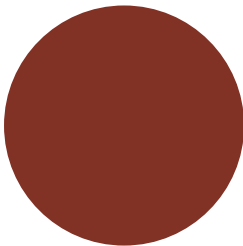
RR21 Light Grey



RR22 Grey



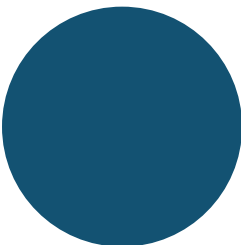
Graphite ~ RAL 7024



RR29 Red



RR33 Black



RR35 Blue



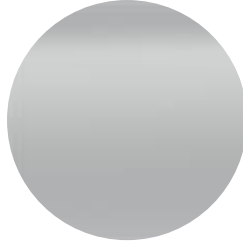
RR40 Silver



RR41 Dark silver



RR45 Metallic graphite



RR946 Metallic silver