



NEW

# Siba Tech

Deep gutter system

---

One gutter,  
two fronts

square  
front

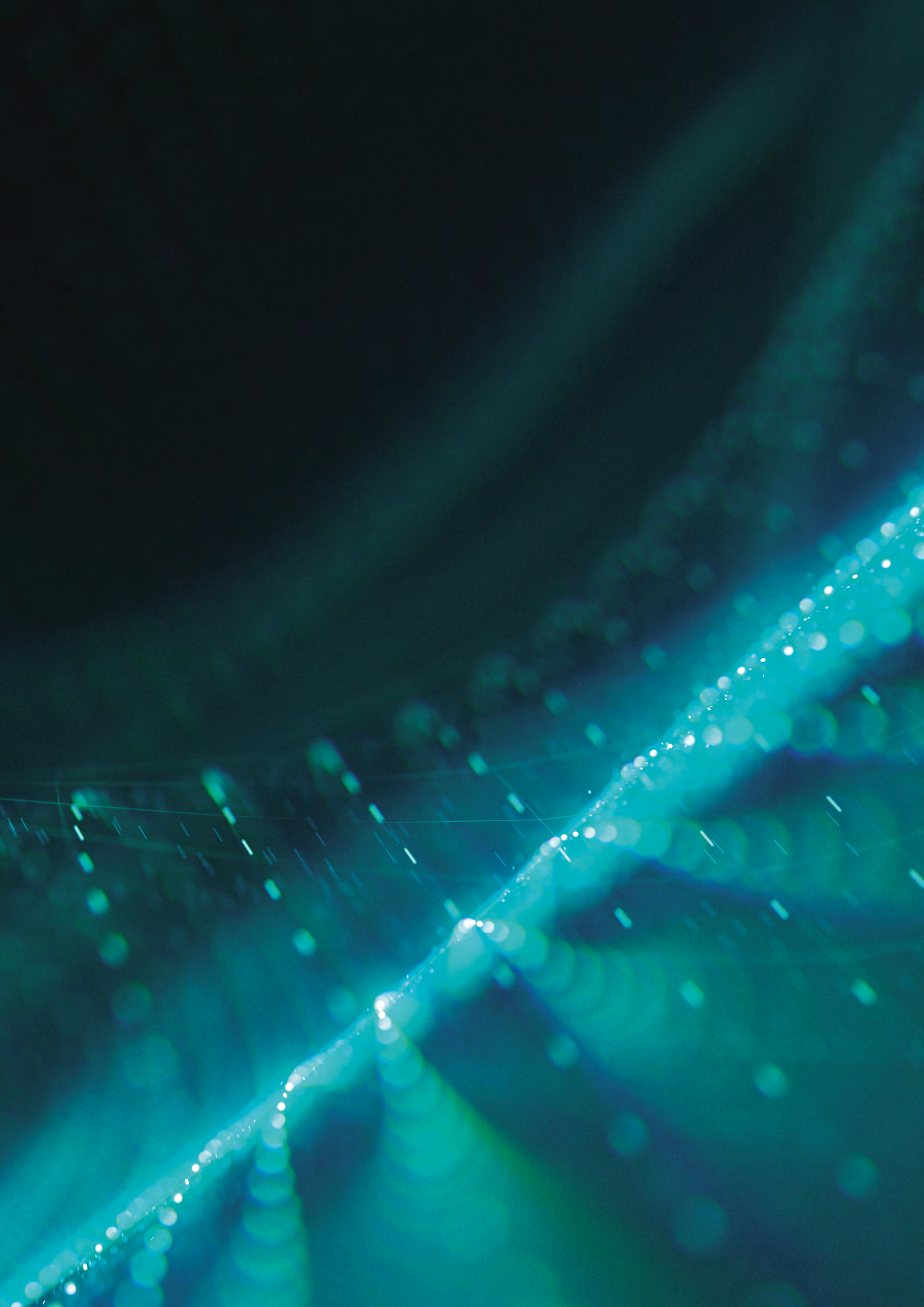


half-round  
front

[www.rynnysiba.pl](http://www.rynnysiba.pl)

 **SIBA**  
GUTTER SYSTEMS







# The inspiring combination

## Siba Tech. Deep gutter system

---

Finding perfect combinations is our passion. Changing one's perspective provides an opportunity to explore new areas and reach for innovative solutions. We thoroughly study complex issues to create the best products. Many years of international cooperation have helped us to dynamically develop our technology.

Our fusion of the strengths of the two shapes – the round and the square – has produced the most effective and watertight gutter system on the market.

This is why we can perfectly match our products to the needs of every home. Siba Tech. The inspiring combination.





# One gutter,

square  
front → 





# two fronts



half-round  
front

# Deep gutter system

## What does it mean in practice?

---

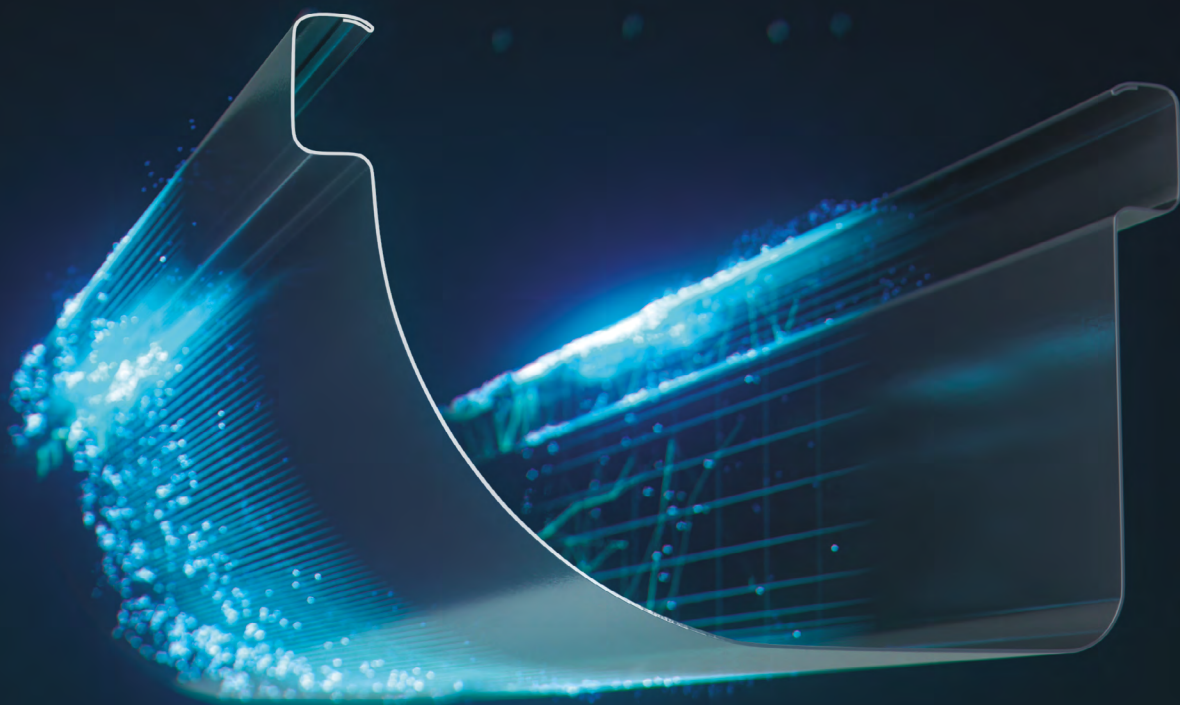
The Siba Tech deep gutter system features an even more efficient gutter section. The combination of the two shapes makes the gutter more efficient compared to other systems on the market, with the effective surface area that is about 13% larger than that of the conventional 135 mm half-round gutters.

Thanks to the innovative shape of the gutter and its one-piece corners, the system's flow-through rate is higher than in square gutters. Besides, the system is more durable and looks much better.

The increased depth of the gutter facilitates the drainage of the roof and its heavy-duty performance makes it a great solution for both residential and public buildings.







**13% more  
efficient**





# Siba Tech

## The GreenCoat RWS Pro coating and technical details

The inner and outer sides of the steel gutter are proofed with the advanced GreenCoat RWS Pro coating which also features outstanding gloss and color durability. The embedded polymer particles make the coating resistant to scratching and weathering.

This material comes from SSAB who are recognized for their innovative and environment-friendly coated steel products for the construction industry. It is almost 100% recyclable.

Gutter	3000   4000 mm
Downpipe	1000   3000 mm
Gutter size	140 mm
Round downpipe	90 mm
Square downpipe	80 x 80 mm
Steel thickness	0,6 mm
Gutter weight	1,7 kg/mb
Downpipe weight round	1,32 kg/mb
Downpipe weight square	1,42 kg/mb



Black  
~RAL 9005



Graphite  
~RAL 7024



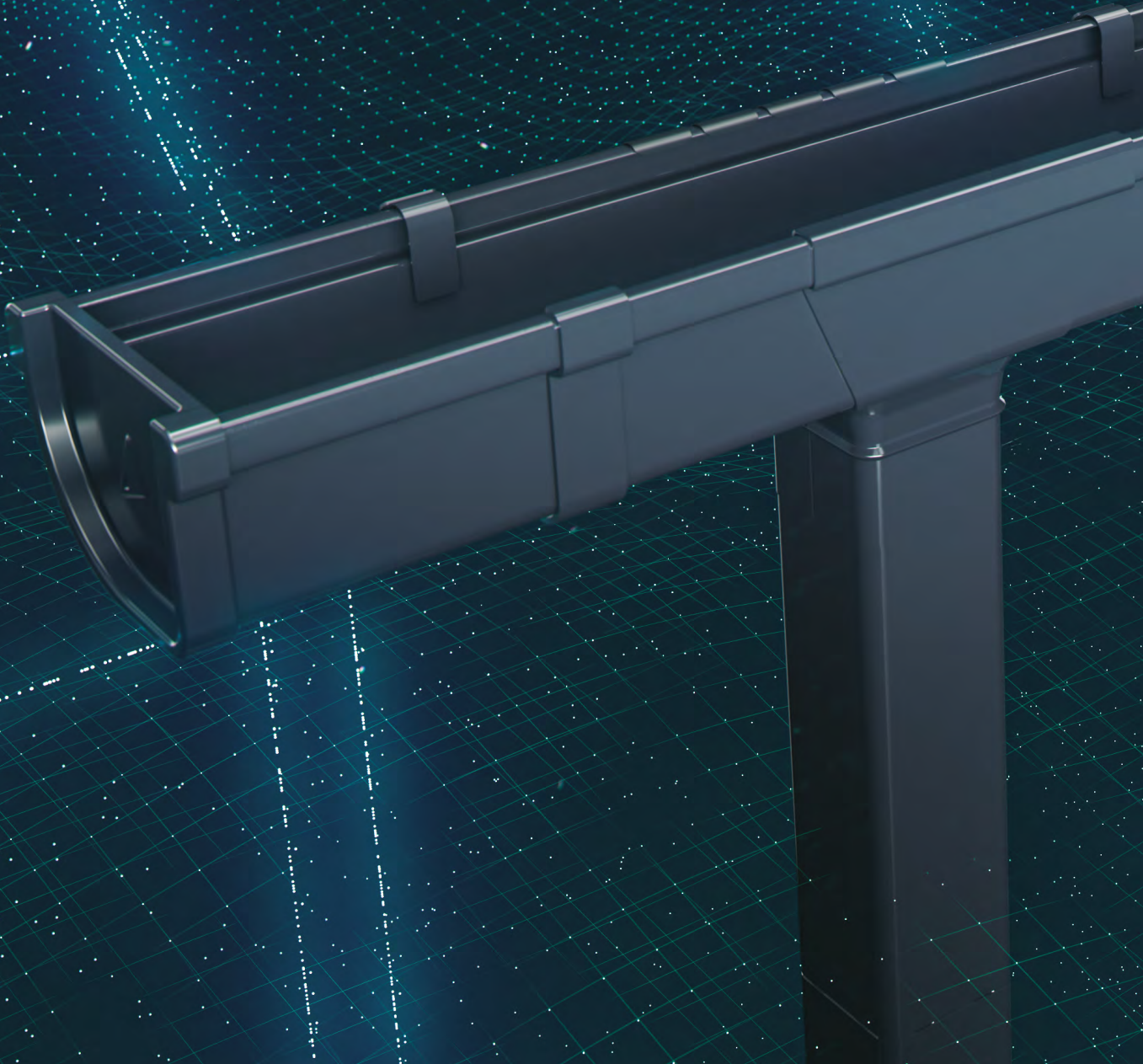
Anthracite  
~RAL 7021



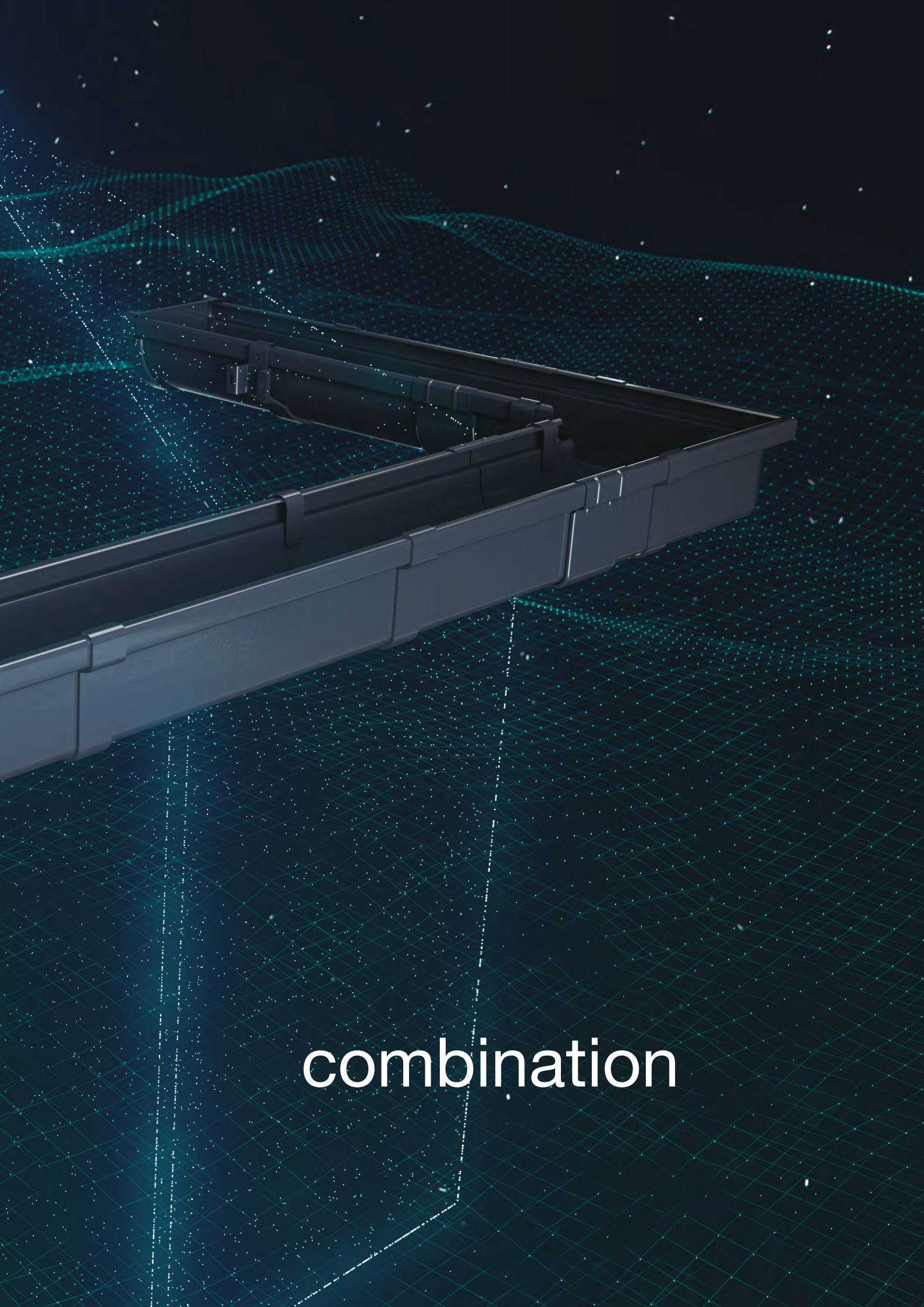
Chocolate brown  
~RAL 8017

System size: 140/90 mm or 140/80 x 80 mm

The inspiring







combination

# Why is the Siba Tech system a unique and inspiring solution?

---

Every house is different in some aspects. Even if a building has a standard design, it always stands out with something: its environment, façade color or roofing type. Although the roof gutter is an essential part of every building, it does not have to look repetitive or dull. With the Siba Tech system, you can choose the right styles of the gutter face – the ones best matched to your dwelling place.



# The appearance

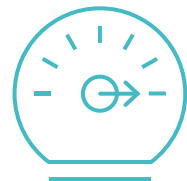


---

The unique solution of the Siba Tech deep gutter system allows you to choose the shape of the gutter and select the system according to your preferences. Its modern shape empha-

sizes the unique character of the system, adding elegance to the roof slope. This makes it even easier to creatively design your building and customize it according to your preferences!

# Performance



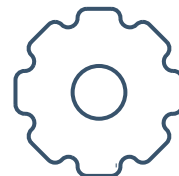
---

The combination of the two shapes in the Siba Tech system has increased its water-carrying capacity and made the flow smoother, which is why the solution is perfect for both residential and public buildings. The unique gutter profile, the design of its corners and the rounded square downpipes are a guarantee of efficient drainage.

Siba Tech offers up to 13% better performance compared to other 135 mm half-round systems on the market.

# Easy installation

---



The open rectangular shape of the gutter edge facilitates cutting the gutter with roofing shears, and the large selection of gutter brackets makes it extremely easy to choose an optimal solution for any type of roof and covering. Gutter brackets allow maintaining the eave's ventilation gap, thus improving

the function of the entire roof, while vertical mounting holes make it easy to adjust them to the slope of the gutter.

# Quality and reliability

---



The strength and tightness of the Siba Tech system, as well as its compliance with the applicable standards, have been confirmed by the certificate of the Polish Building Research Institute (ITB). The system is fabricated from the highest quality 0.6 mm thick Scandinavian steel secured with the advanced

GreenCoat RWS Pro coating, which provides exceptional resistance to UV radiation and corrosion. The gutter's edges ended with a front edge bending stiffens and rust-proofs the edge.



# Tightness

---



The combination of the two shapes ensures even better tightness of the gutter fittings, and also improves the sealing force of the gaskets. The exceptional tightness of the system is additionally ensured by the gutter ends with wide asymmetrical gaskets.

The gutter joint holds each pair of the gutter pieces together firmly and tightly,

without a need for additional sealants, and the gutter end with the integral gasket (in the shape of asymmetrical tabs) fits snugly into the gutter's profile, requiring no additional fasteners. You can easily rest the long-armed corners on the supporting brackets, ensuring the right position of the corners relative to the gutter line.

# Brand

---



The branded components of the system include gutter ends and pipe holders. The components carrying the brand's logo complement the stylish look of the whole.



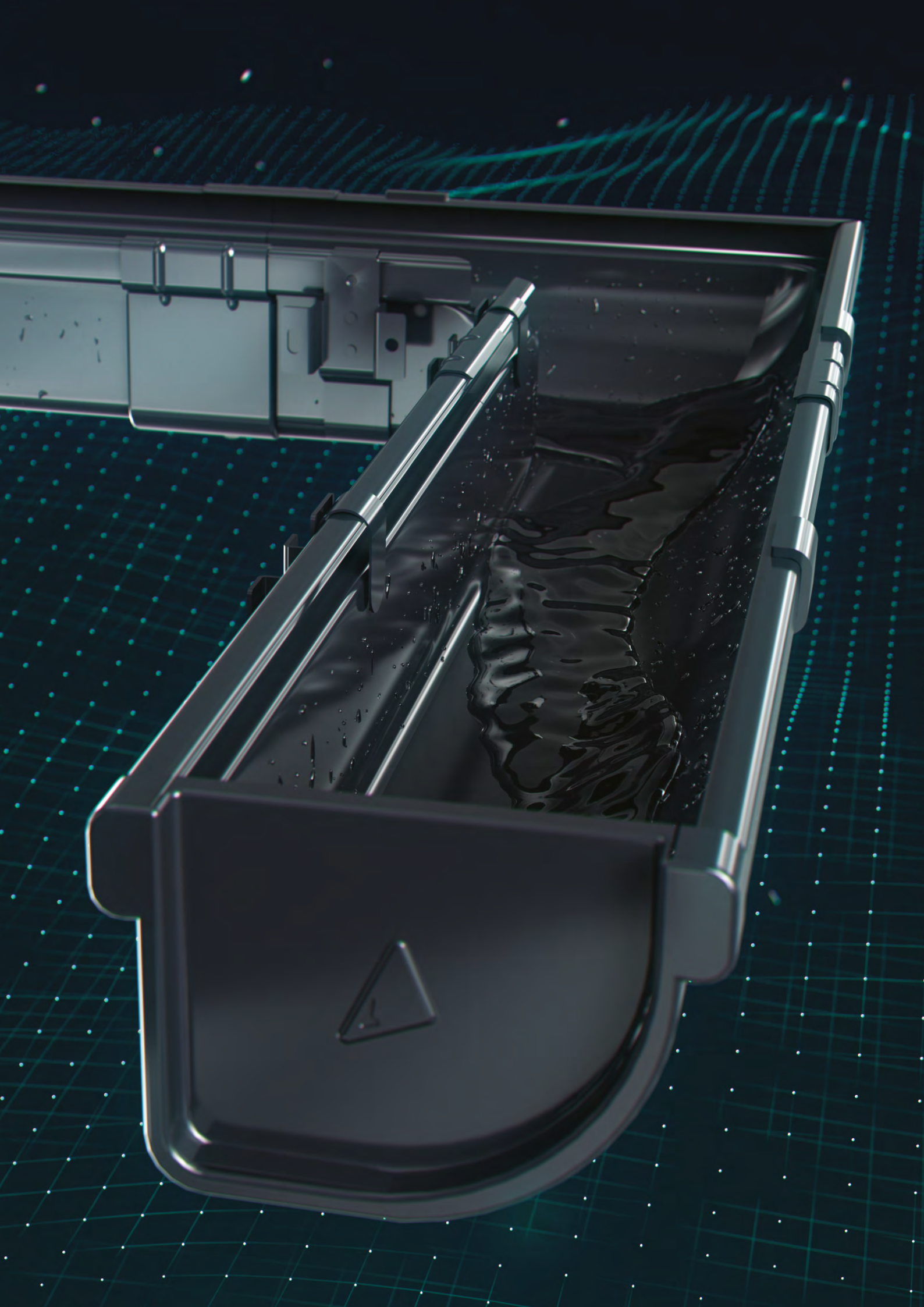
# The pioneer

---

This innovative system, combining the round with the square, is the first of its kind on the market. In addition to the innovative approach to the style, it offers a number of functional benefits. This single solution building on the two geometric figures allows you to choose from among components of the conventional half-round systems and

the increasingly popular square forms. The system components, including the gutter sections, corners, joints and gutter ends, are mutually exchangeable regardless of the chosen shape or direction of assembly.





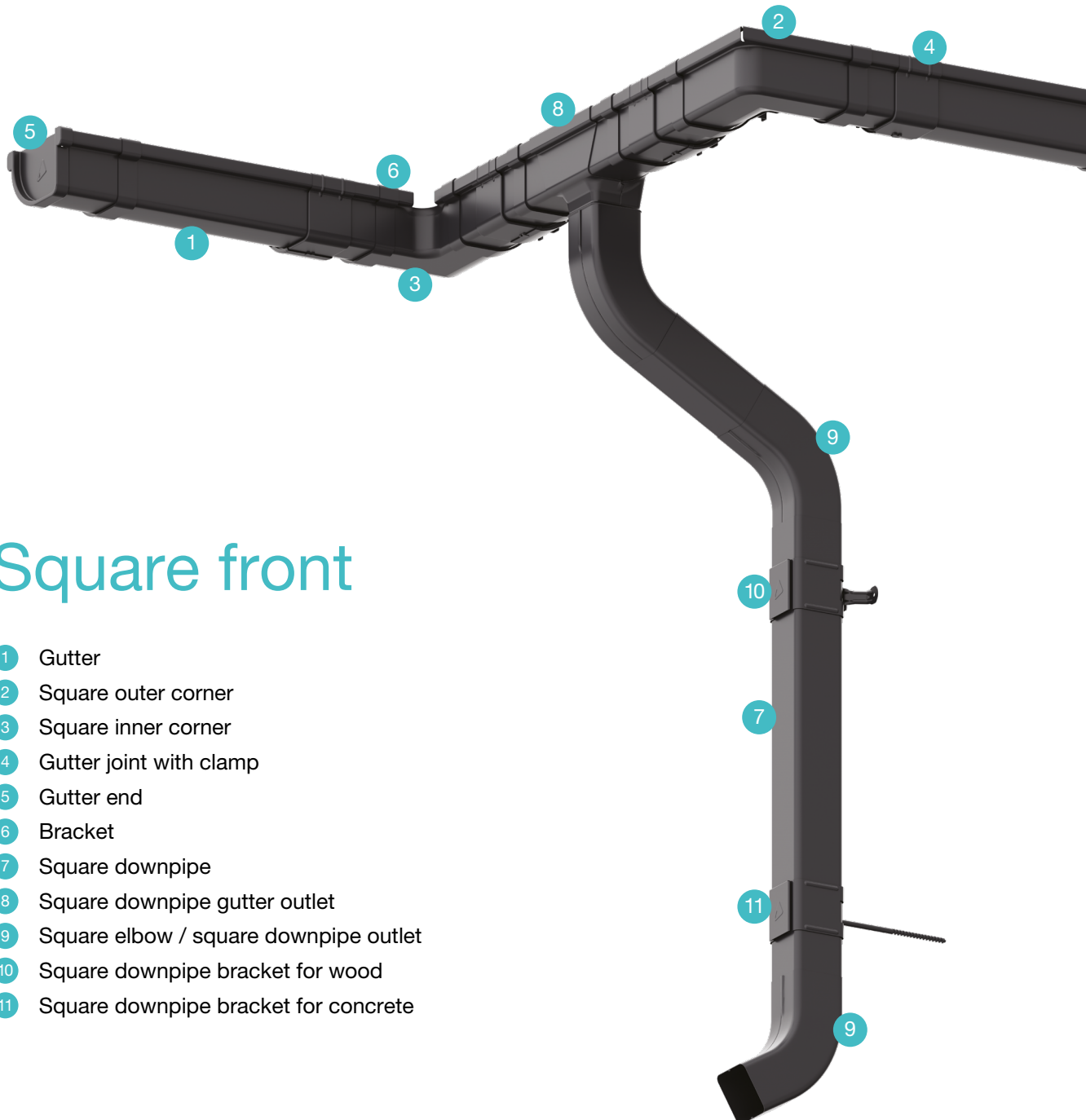
# Components of the Siba Tech deep gutter system



## Half-round front

- 1 Gutter
- 2 Half-round outer corner
- 3 Half-round inner corner
- 4 Gutter joint with clamp
- 5 Gutter end
- 6 Bracket
- 7 Round downpipe
- 8 Round downpipe gutter outlet
- 9 Elbow
- 10 Downpipe outlet
- 11 Downpipe bracket for wood
- 12 Downpipe bracket for concrete





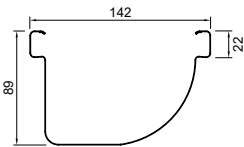
## Square front

- 1 Gutter
- 2 Square outer corner
- 3 Square inner corner
- 4 Gutter joint with clamp
- 5 Gutter end
- 6 Bracket
- 7 Square downpipe
- 8 Square downpipe gutter outlet
- 9 Square elbow / square downpipe outlet
- 10 Square downpipe bracket for wood
- 11 Square downpipe bracket for concrete

Gutter



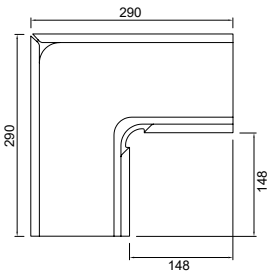
size: 140  
length: 3000/4000 mm



Square inner corner /  
half-round outer corner



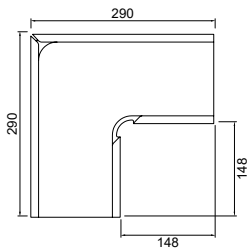
size: 140



Square outer corner /  
half-round inner corner



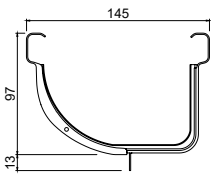
size: 140



Gutter joint with clamp



size: 140

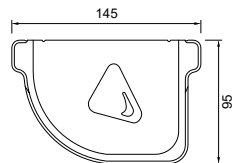




Left square  
/ right half-round gutter end



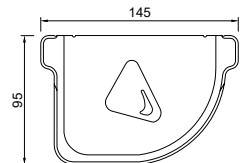
size: 140



Right square  
/ left half-round gutter end



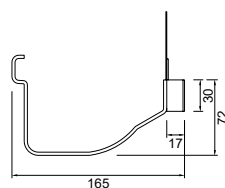
size: 140



Square P-type DDC bracke



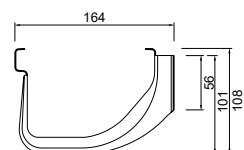
size: 140



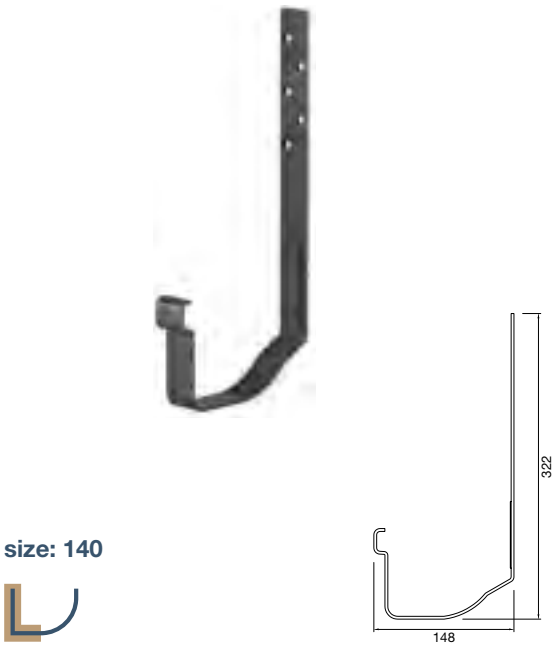
Square H-type DDC bracket



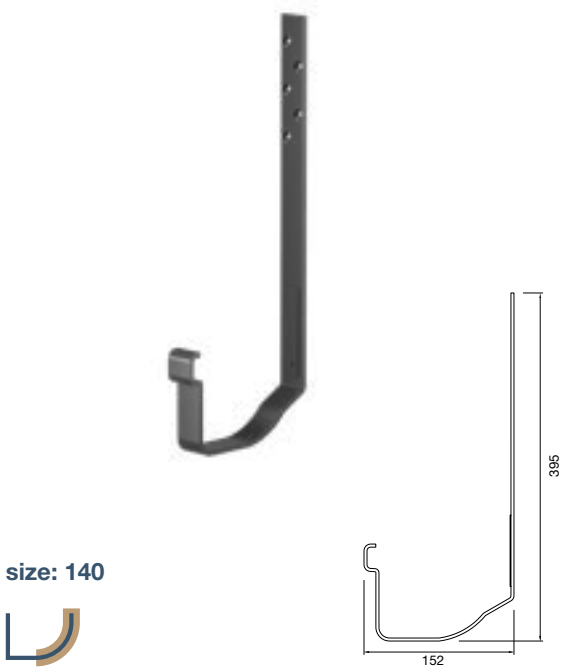
size: 140



Long square bracket



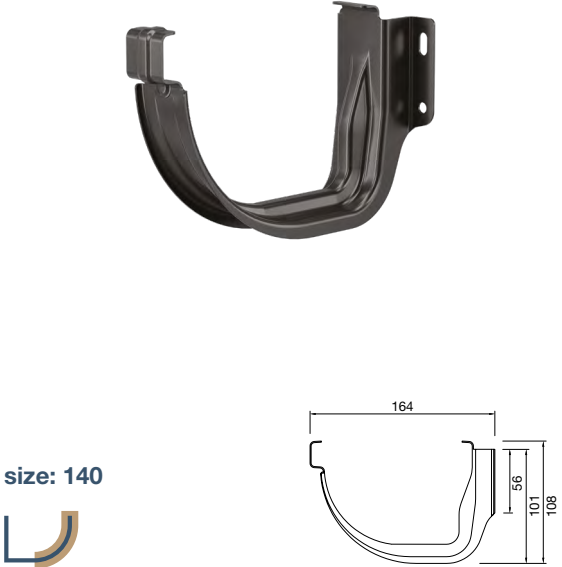
Extra long square bracket



Half-round P-type DDC bracket



Half-round H-type DDC bracket

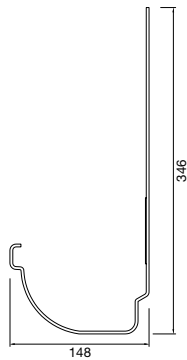




### Half-round long bracket



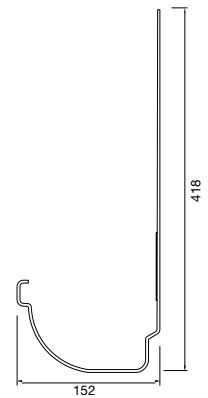
size: 140



### Half-round extra long bracket



size: 140

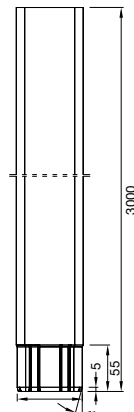


### Square downpipe



size: 80 x 80

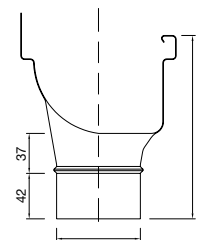
length: 1000/3000 mm



### Square downpipe gutter outlet



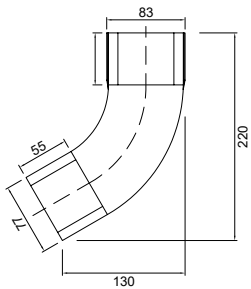
size: 140 / 80 x 80



Square elbow / square downpipe outlet



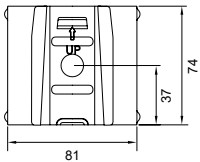
size: 80 x 80



Square downpipe bracket for concrete



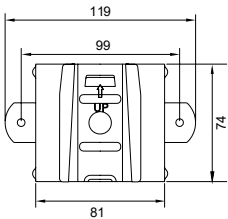
size: 80 x 80



Square downpipe bracket for wood



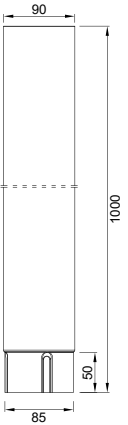
size: 80 x 80



Round downpipe



size: 90  
length: 1000 / 3000 mm

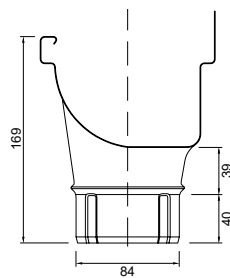




### Round downpipe gutter outlet



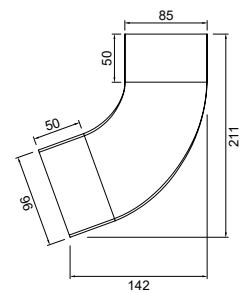
size: 140 / 90



### Elbow



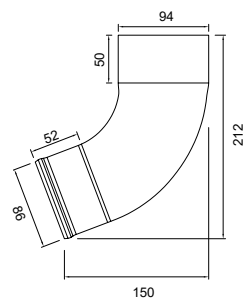
size: 90



### Downpipe outlet



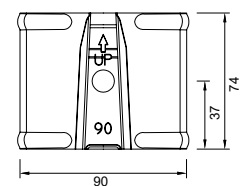
size: 90



### Round downpipe bracket for concrete



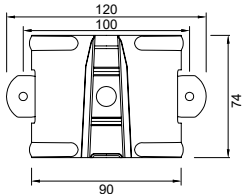
size: 90



Round downpipe bracket for wood



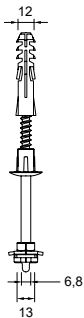
size: 90



Holder pin for concrete



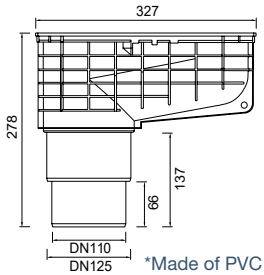
size: 125 / 175 / 200 / 250 / 300



Sewer trap for square downpipe\*



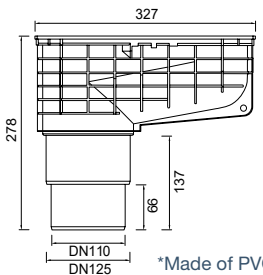
size: 80 x 80



Sewer trap for round downpipe\*



size: 90







Scan the code,  
watch the animation  
and learn all the features  
of the Siba Tech  
deep gutter system.





The images provided in this brochure are illustrative. The manufacturer reserves the right to modify designs, dimensions and colors of the products. This brochure is intended as a reference and not an offer within the meaning of art. 66(1) of the Polish Civil Code.



**Ruukki Polska Sp. z o.o., ul. Jaktorowska 13, 96-300 Żyrardów, phone: +48 46 85 81 600 [www.rynnysiba.pl](http://www.rynnysiba.pl)**  
Copyright © 2024 Ruukki Construction. All rights reserved. Ruukki, Siba and product names are trademarks or registered trademarks of Ruukki Construction, a subsidiary of SSAB.