


Drawing nr.	Contents of drawing
SPA30-FIRE-1E-EN	Fastening to floor, vertical or horizontal installation
SPA30-FIRE-2E-EN	Fastening to floor, vertical or horizontal installation
SPA31-FIRE-1E-EN	Vertical joint, horizontal installation
SPA31-FIRE-2E-EN	Vertical joint, horizontal installation
SPA31-FIRE-3E-EN	Vertical joint, horizontal installation
SPA31-FIRE-4E-EN	Vertical joint, horizontal installation, ≤EI60
SPA31-FIRE-5E-EN	Vertical joint, horizontal installation, ≤EI120
SPA32-FIRE-1E-EN	L-corner without column, vertical installation, ≤ EI30
SPA32-FIRE-2E-EN	T-corner with column, horizontal (or vertical) installation
SPA32-FIRE-3E-EN	L-corner with column, horizontal or vertical installation
SPA32-FIRE-4E-EN	L-corner with column, vertical installation, ≤ EI60
SPA32-FIRE-5E-EN	L-corner without column, vertical installation, ≤ EI60
SPA32-FIRE-6E-EN	T-corner with column, vertical installation, ≤ EI60
SPA32-FIRE-7E-EN	T-corner without column, vertical installation, ≤ EI60
SPA32-FIRE-8E-EN	T-corner without column, vertical installation, ≤ EI30
SPA33-FIRE-1E-EN	Fastening to concrete roof, horizontal installation
SPA33-FIRE-2E-EN	Fastening to concrete roof, vertical installation
SPA35-FIRE-1E-EN	Fastening to load-bearing sheet roof, roof sheet perpendicular to compartment wall
SPA35-FIRE-2E-EN	Fastening to load-bearing sheet roof, roof sheet parallel to compartment wall
SPA35-FIRE-3E-EN	Fastening to load-bearing sheet roof, roof sheet parallel to compartment wall, alternative solution, EI120
SPA36-FIRE-1E-EN	Fastening to ext. wall, horizontal or vertical installation
SPA36-FIRE-2E-EN	Fastening to ext. wall, vertical installation, ≤ EI60
SPA36-FIRE-3E-EN	Fastening to ext. wall, vertical installation, ≤ EI30
SPA36-FIRE-4E-EN	Fastening to ext. wall, vertical installation, ≤ EI60

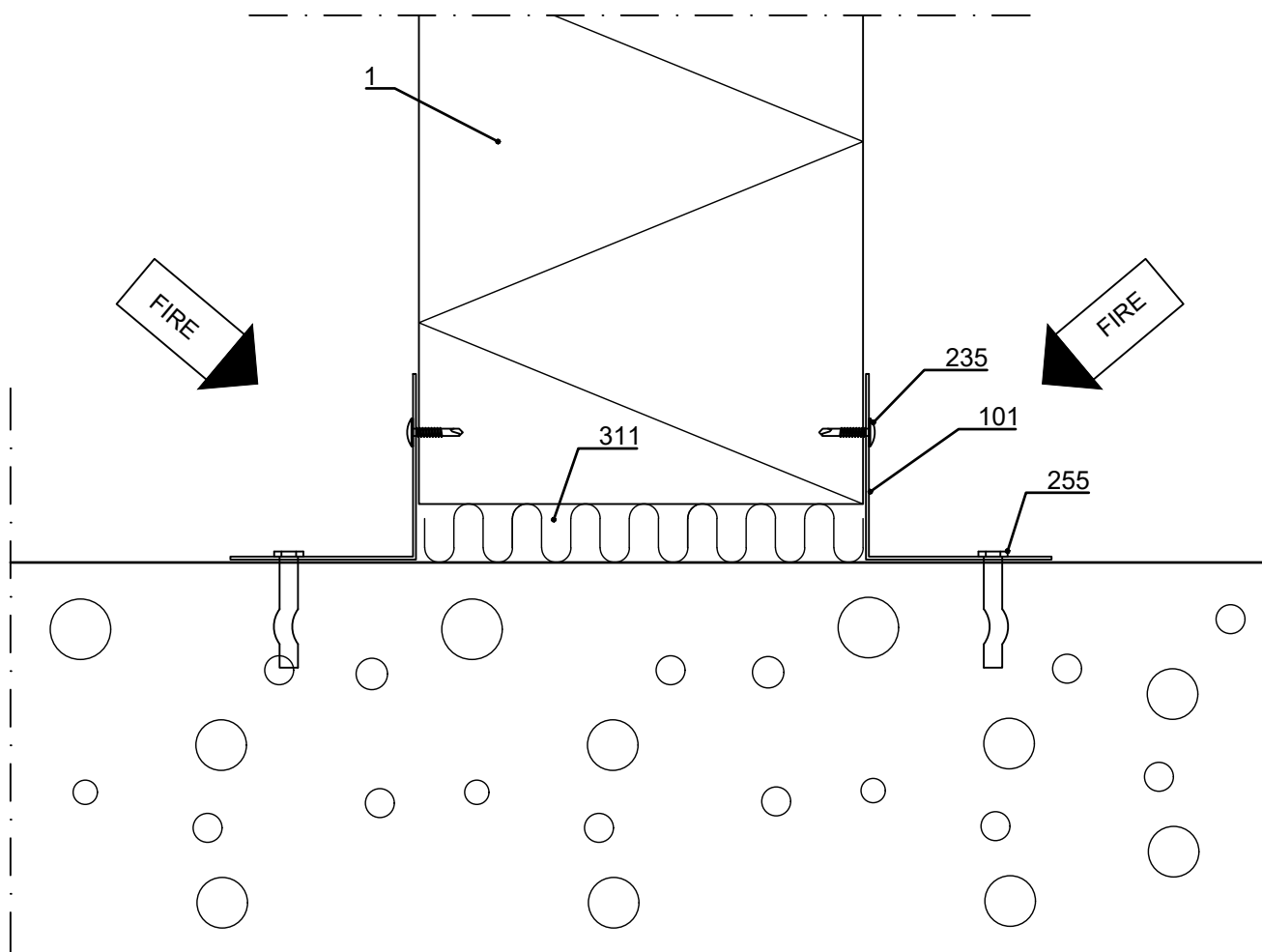
City sector	Block	Site/Reg. nr.	File nr.		
Building type			Drawing type Nr.		
Building, Name and address			Contents of drawing		Scale
 <p>Ruukki Construction Oy Panuntie 11 00620 HELSINKI FINLAND</p> <p>tel. +358 (0) 20 59 150 www.ruukki.com</p>			<p>Sandwich panel SPA compartment details, wall Principle details</p>		
Date 30.06.2023	Designer	Work nr.	Work nr.	Drw. nr.	Rev.
Drawn by Ruukki	Checked				



Contents of drawing

Sandwich panel SPA compartment details  
Vertical or horizontal installation  
Fastening to floor, vertical section

Date 30.06.2023	Rev. date	Work nr.	Drawing nr. SPA30-FIRE-1E-EN
Drawn by Ruukki	Rev.		
Scale 1:2.5	Building		File nr.



- ☐ 001. Sandwich panel SPA, vertical or horizontal installation
- ☐ 101. /EA1FC1/ Fastening corner flashing
- ☐ 235. Screw c/c 300 mm
- ☐ 255. Spike-fastener
- ☐ 311. /EAWS5657850/ Mineral wool

☒ Ruukki's delivery

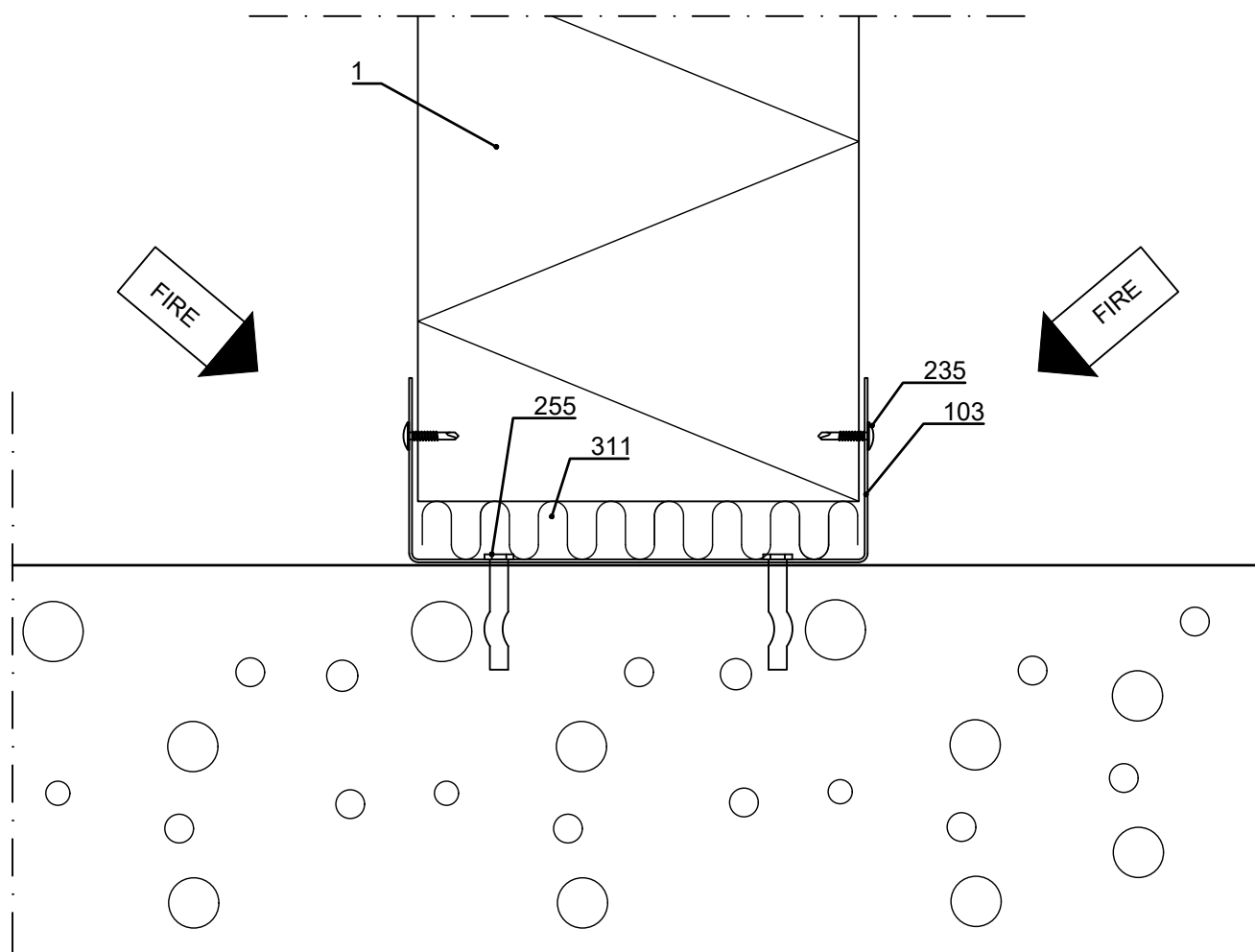
Copyright © Ruukki Construction Oy. Allowed only for designs with Ruukki's products.



# Contents of drawing

Sandwich panel SPA compartment details  
Vertical or horizontal installation, fastening to  
floor, vertical section, alternative solution

Date 30.06.2023	Rev. date	Work nr.	Drawing nr. SPA30-FIRE-2E-EN
Drawn by Ruukki	Rev.		
Scale 1:2.5	Building		File nr.



- ☐ 001. Sandwich panel SPA, vertical or horizontal installation
- ☐ 103. Termo Purlin, U-profile
- ☐ 235. Screw c/c 300 mm
- ☐ 255. Spike-fastener
- ☐ 311. /EAWS5657850/ Mineral wool

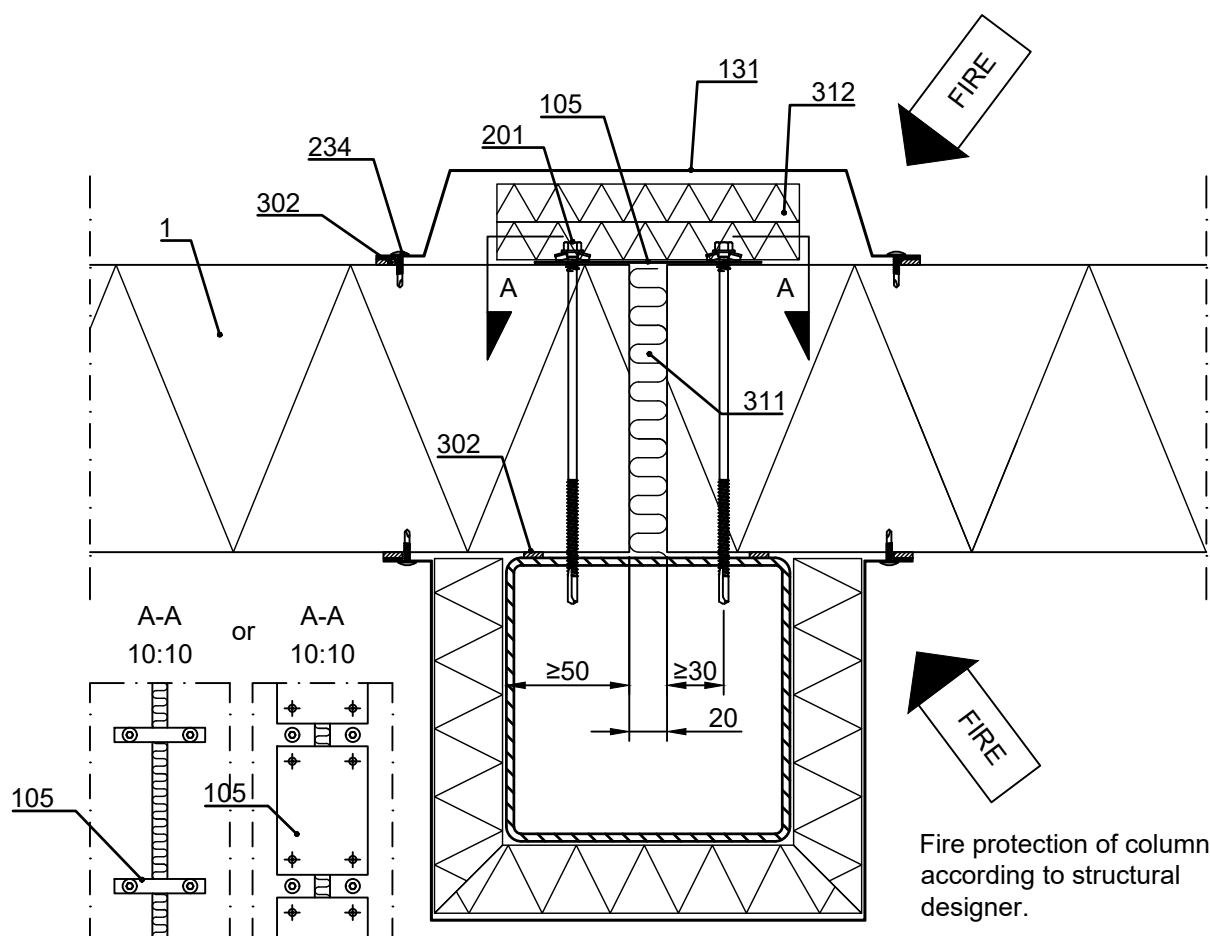
☒ Ruukki's delivery

Copyright © Ruukki Construction Oy. Allowed only for designs with Ruukki's products.

Date 30.06.2023	Rev. date	Work nr.	Drawing nr. SPA31-FIRE-1E-EN
Drawn by Ruukki	Rev.		
Scale 1:4	Building		File nr.

Fire protection wool (e.g. FPS 17), mechanical fastening, thickness (mm)

Structure	EI60	EI90	EI120	EI180	EI240
Wall	0	20	20	30	50



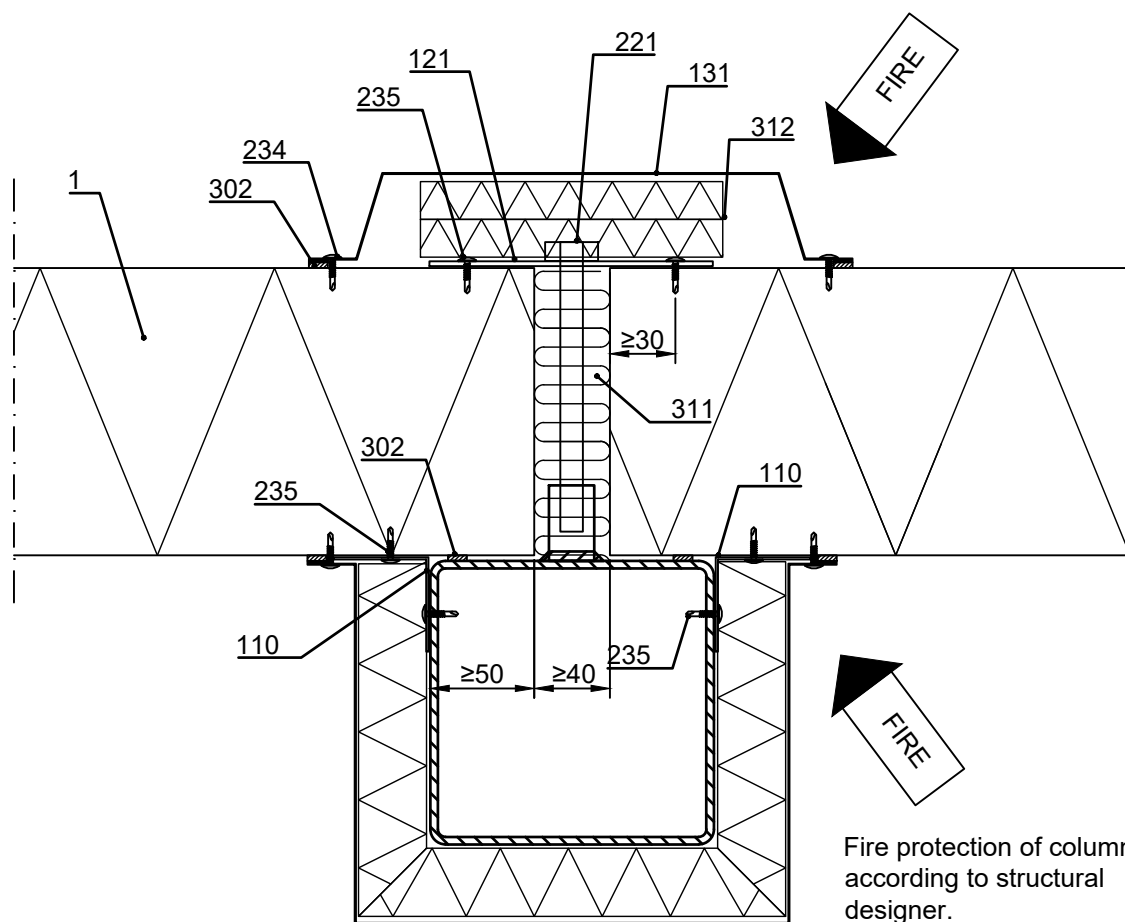
Fire protection of column  
according to structural  
designer.

- ☐ 001. Sandwich panel SPA, horizontal installation
- ☐ 105. Steel bandings or steel sheets,  $t \geq 0,7$  mm
- ☐ 131. /EA1R18/ or other Cover flashing
- ☐ 201. Self-drilling panel screw, washer with sealing
- ☐ 234. Flashing screw c/c 300 mm
- ☐ 302. /EA3SS410/ Sealing band
- ☐ 311. /EAWS5657850/ Mineral wool
- ☐ 312. /EAFW206001200/ Fire protection wool,  
mechanical fastening to surface

☒ Ruukki's delivery

Date 30.06.2023	Rev. date	Work nr.	Drawing nr. SPA31-FIRE-2E-EN
Drawn by Ruukki	Rev.		
Scale 1:4	Building		File nr.

Fire protection wool (e.g. FPS 17), mechanical fastening, thickness (mm)					
Structure	EI60	EI90	EI120	EI180	EI240
Wall	0	20	20	30	50



Fire protection of column  
according to structural  
designer.

- ☐ 001. Sandwich panel SPA, horizontal installation
- ☐ 110. L-purlin, 50x50 or 60x60, t ≥ 1,2 mm
- ☐ 121. /EA6FP\_\_\_/ Fastening plate
- ☐ 131. /EA1R18/ or other Cover flashing
- ☐ 221. Internal thread socket + hex bolt
- ☐ 234. Flashing screw c/c 300 mm

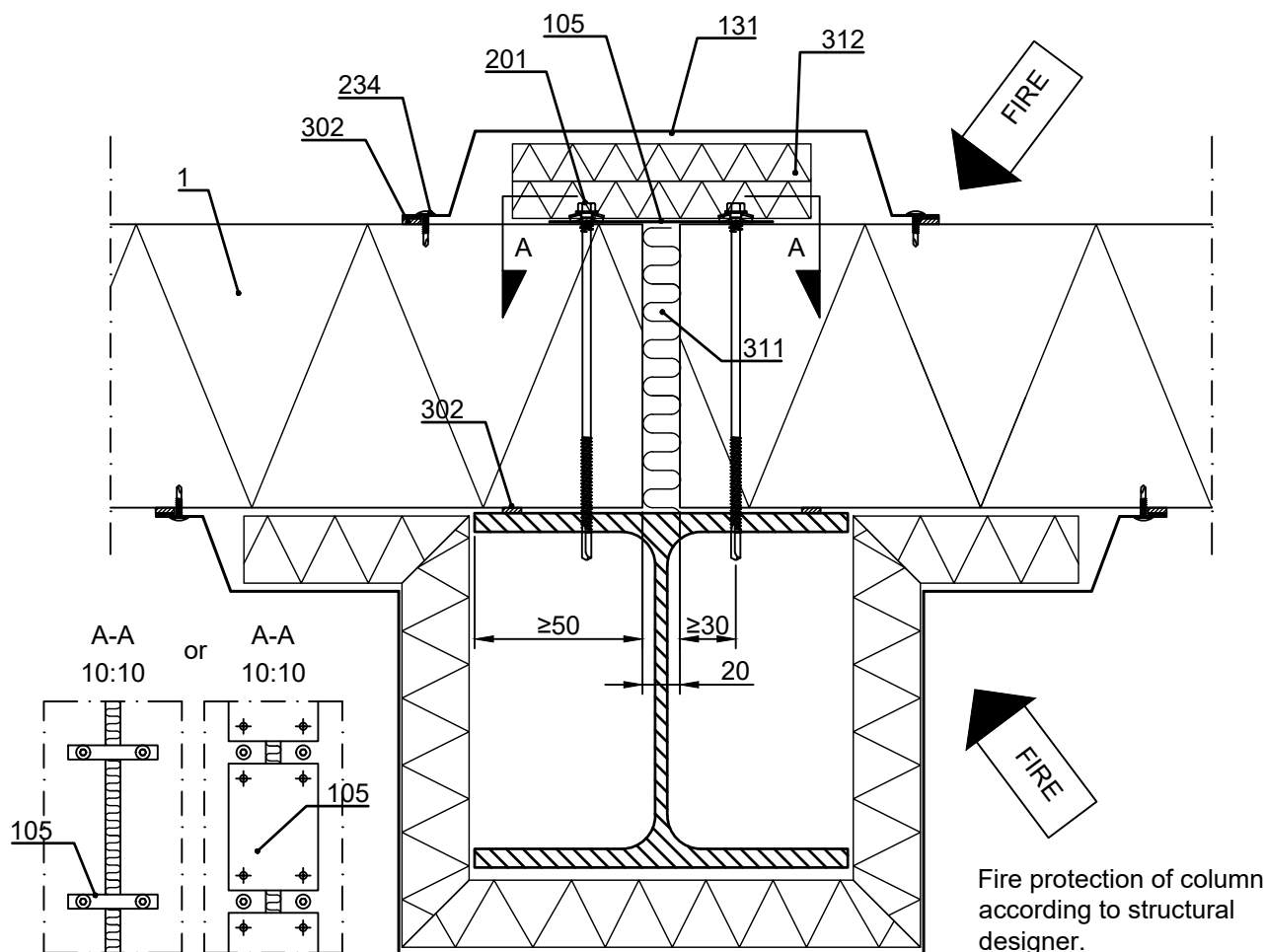
- ☐ 235. Screw (according to structural designer)
- ☐ 302. /EA3SS410/ Sealing band
- ☐ 311. /EAWS5657850/ Mineral wool
- ☐ 312. /EAFW206001200/ Fire protection wool, mechanical fastening to surface

☒ Ruukki's delivery

## Sandwich panel SPA compartment details Horizontal installation, vertical joint, horizontal section

Date 30.06.2023	Rev. date	Work nr.	Drawing nr. SPA31-FIRE-3E-EN
Drawn by Ruukki	Rev.		
Scale 1:4	Building		File nr.

Fire protection wool (e.g. FPS 17), mechanical fastening, thickness (mm)					
Structure	EI60	EI90	EI120	EI180	EI240
Wall	0	20	20	30	50



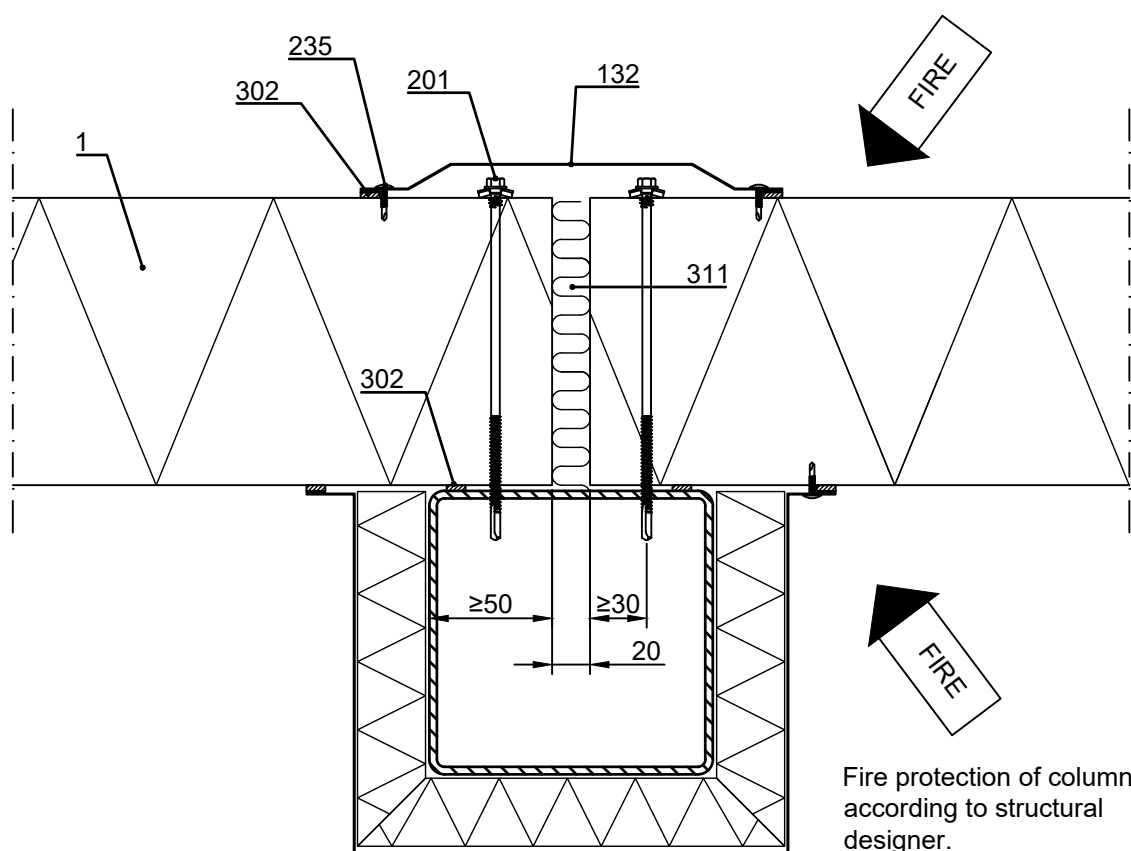
Fire protection of column  
according to structural  
designer.

- ☐ 001. Sandwich panel SPA, horizontal installation
- ☐ 105. Steel bandings or steel sheets,  $t \geq 0,7$  mm
- ☐ 131. /EA1R18/ or other Cover flashing
- ☐ 201. Self-drilling panel screw, washer with sealing
- ☐ 234. Flashing screw c/c 300 mm
- ☐ 302. /EA3SS410/ Sealing band
- ☐ 311. /EAWS5657850/ Mineral wool
- ☐ 312. /EAFW206001200/ Fire protection wool,  
mechanical fastening to surface

☒ Ruukki's delivery

Date 30.06.2023	Rev. date	Work nr.	Drawing nr. SPA31-FIRE-4E-EN
Drawn by Ruukki	Rev.		
Scale 1:4	Building	File nr.	

Note! This detail is only applicable when requirements for compartment walls are EI60 or less. For EI90 - EI120 walls see SPA31-FIRE-5E-EN. Otherwise, see universally applicable solutions SPA31-FIRE-1E-EN, SPA31-FIRE-2E-EN or SPA31-FIRE-3E-EN.



- ☐ 001. Sandwich panel SPA, horizontal installation
- ☐ 132. /EA1JF60-1/ or /EA1JF60-2/ Fire flashing
- ☐ 201. Self-drilling panel screw, washer with sealing
- ☐ 235. Flashing screw c/c 300 mm
- ☐ 302. /EA3SS410/ Sealing band
- ☐ 311. /EAWS5657850/ Mineral wool

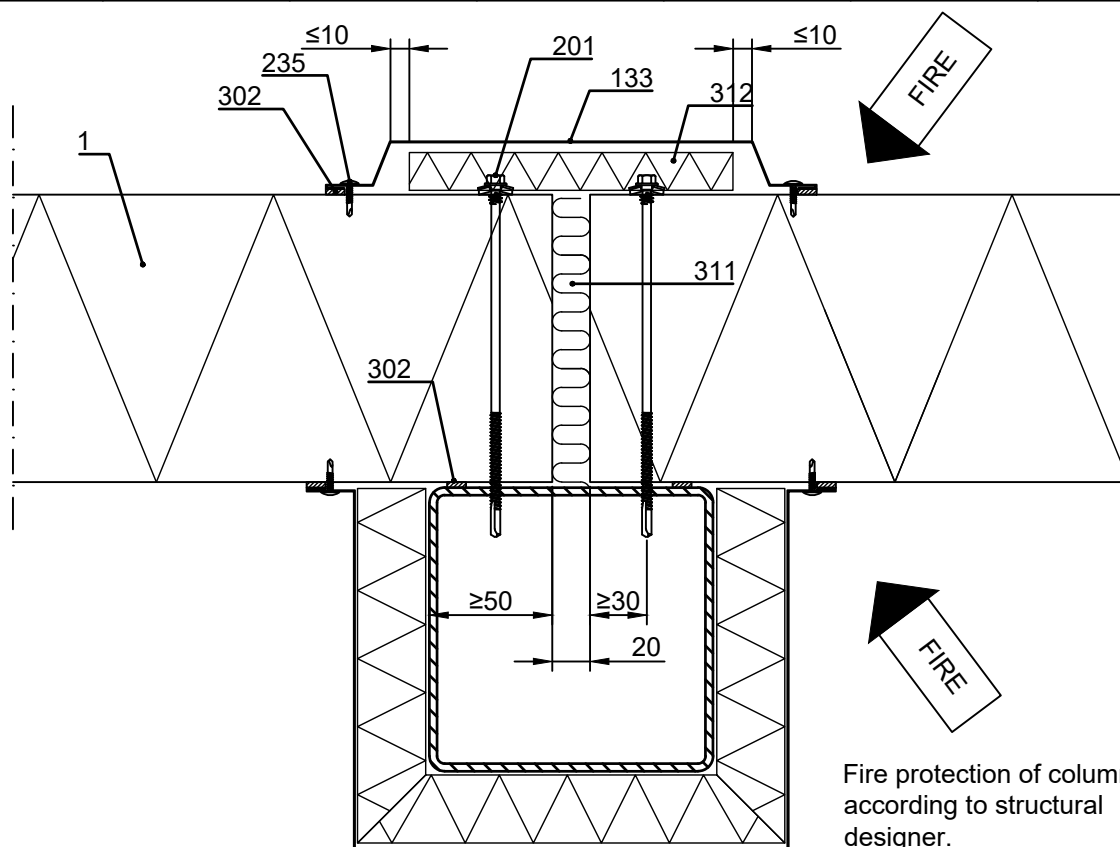
☒ Ruukki's delivery

Date 30.06.2023	Rev. date	Work nr.	Drawing nr. SPA31-FIRE-5E-EN
Drawn by Ruukki	Rev.		
Scale 1:4	Building	File nr.	

Note! This detail is only applicable when requirements for compartment walls are EI120 or less. For  $\leq$ EI60 walls see SPA31-FIRE-4E-EN. Otherwise, see universally applicable solutions SPA31-FIRE-1E-EN, SPA31-FIRE-2E-EN or SPA31-FIRE-3E-EN.

Fire protection wool (e.g. FPS 17), mechanical fastening, thickness (mm)

Structure	EI30	EI60	EI90	EI120	EI180	EI240
Wall	20	20	20	20	N/A	N/A



Fire protection of column  
according to structural  
designer.

- ☐ 001. Sandwich panel SPA, horizontal installation
- ☐ 133. /EA1JV1/ or /EA1JV2/ Vertical joint flashing
- ☐ 201. Self-drilling panel screw, washer with sealing
- ☐ 235. Flashing screw c/c 300 mm
- ☐ 302. /EA3SS410/ Sealing band
- ☐ 311. /EAWS5657850/ Mineral wool
- ☐ 312. /EAFW206001200/ Fire protection wool, mechanical fastening to surface

20 mm fire protection wool is always mandatory with this joint type to better facilitate the load transfer between outer panel sheets during fire.

☒ Ruukki's delivery



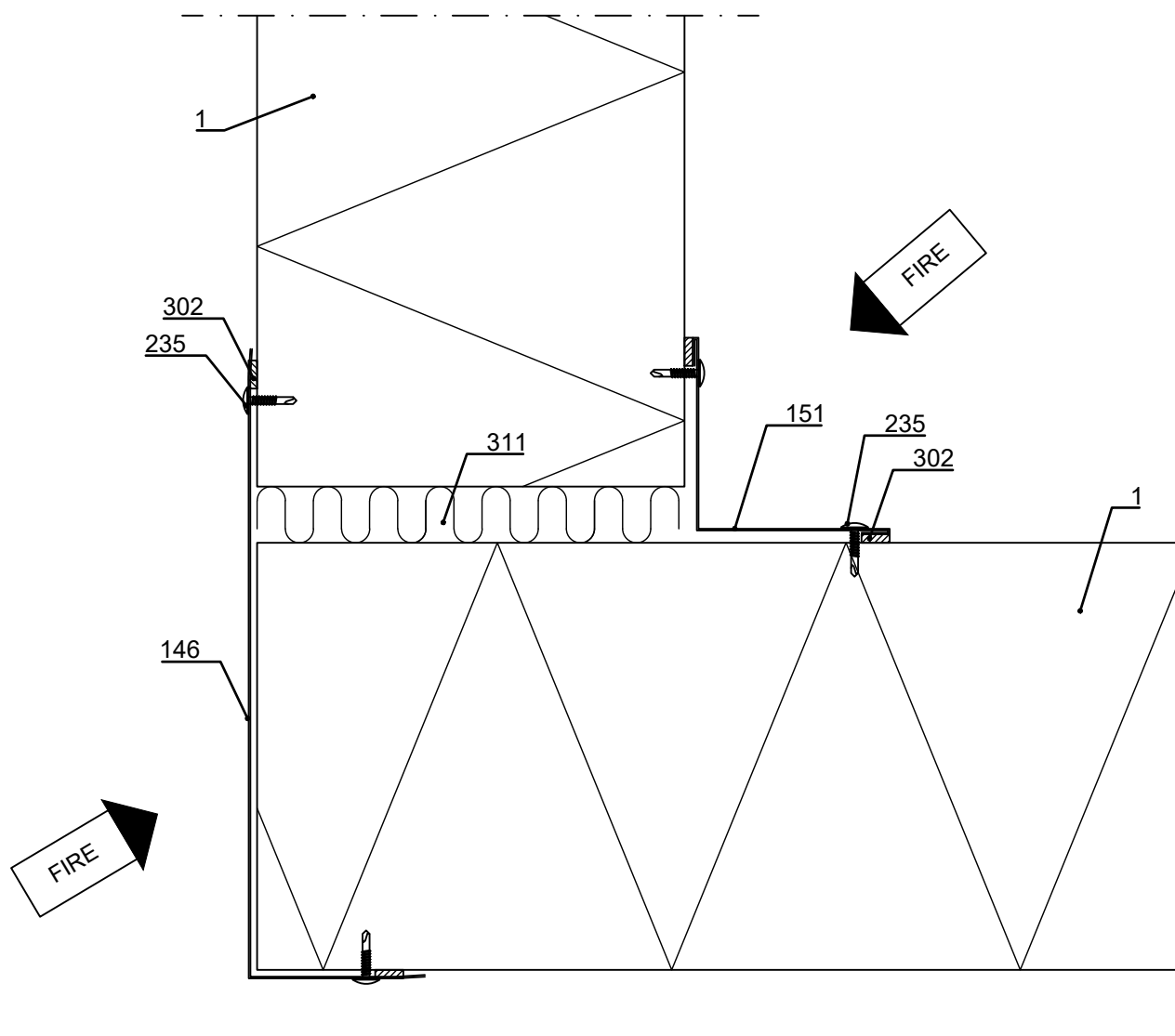


Contents of drawing

Sandwich panel SPA compartment details  
Vertical installation, L-corner  
without column,  $\leq$  EI30, horizontal section

Date 30.06.2023	Rev. date	Work nr.	Drawing nr. SPA32-FIRE-1E-EN
Drawn by Ruukki	Rev.		
Scale 1:2.5	Building	File nr.	

Note! This detail is only applicable when requirements for compartment walls are EI30 or less, and when vertical panels don't require additional support structures (see roof fastening detail SPA33-FIRE-2E-EN).



- ☐ 001. Sandwich panel SPA, vertical installation
- ☐ 146. /EA1EC9-\_\_\_/ External corner flashing
- ☐ 151. /EA1IC2/ Internal corner flashing
- ☐ 235. Screw c/c 300 mm
- ☐ 302. /EA3SS410/ Sealing band
- ☐ 311. /EAWS5657850/ Mineral wool

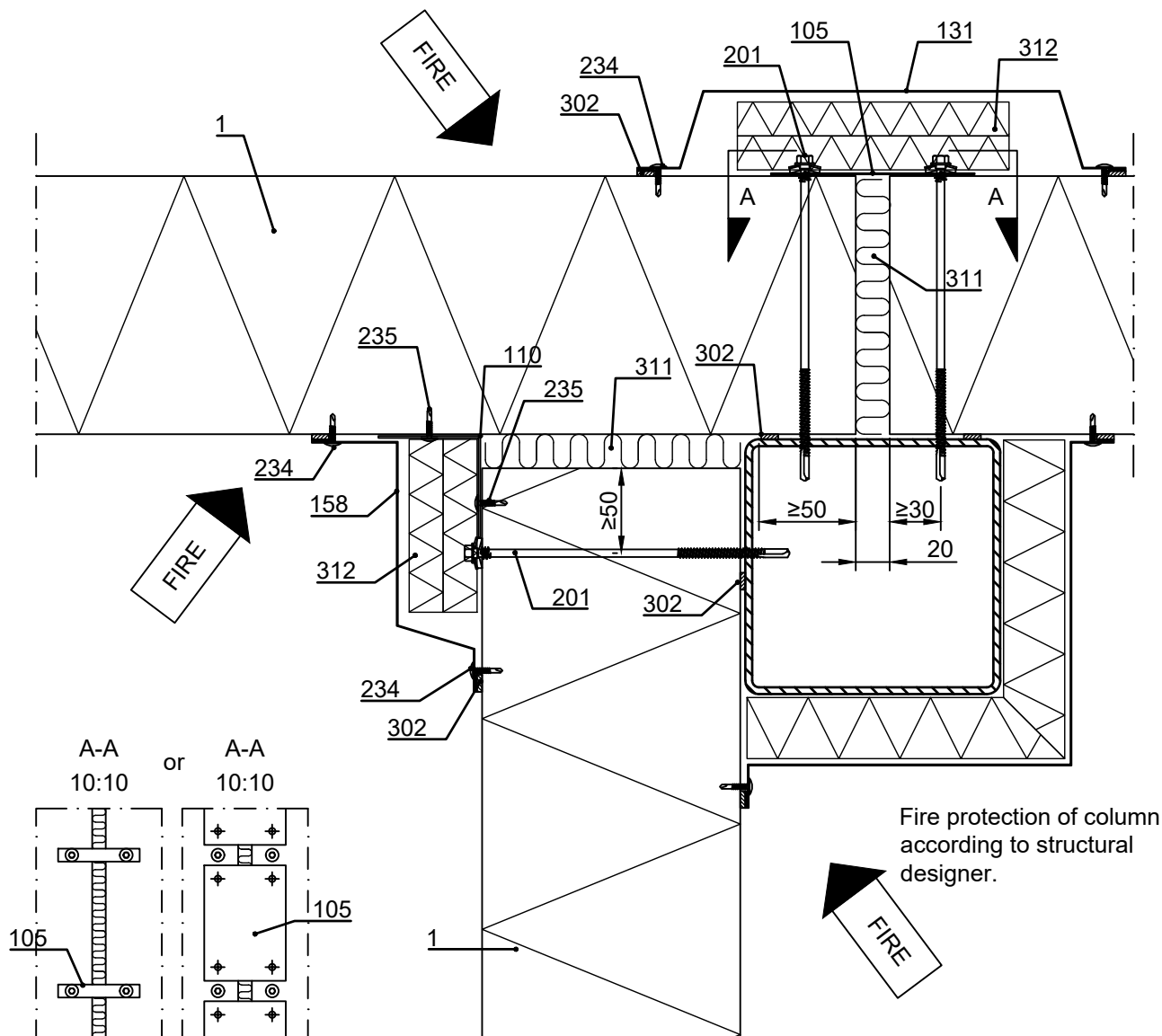
☒ Ruukki's delivery

Copyright © Ruukki Construction Oy. Allowed only for designs with Ruukki's products.

## Sandwich panel SPA compartment details Horizontal (or vertical) installation, T-corner with column, horizontal section

Date	30.06.2023	Rev. date		Work nr.		Drawing nr.	SPA32-FIRE-2E-EN
Drawn by	Ruukki	Rev.					
Scale	1:4	Building				File nr.	

Fire protection wool (e.g. FPS 17), mechanical fastening, thickness (mm)					
Structure	EI60	EI90	EI120	EI180	EI240
Wall	0	20	20	30	50



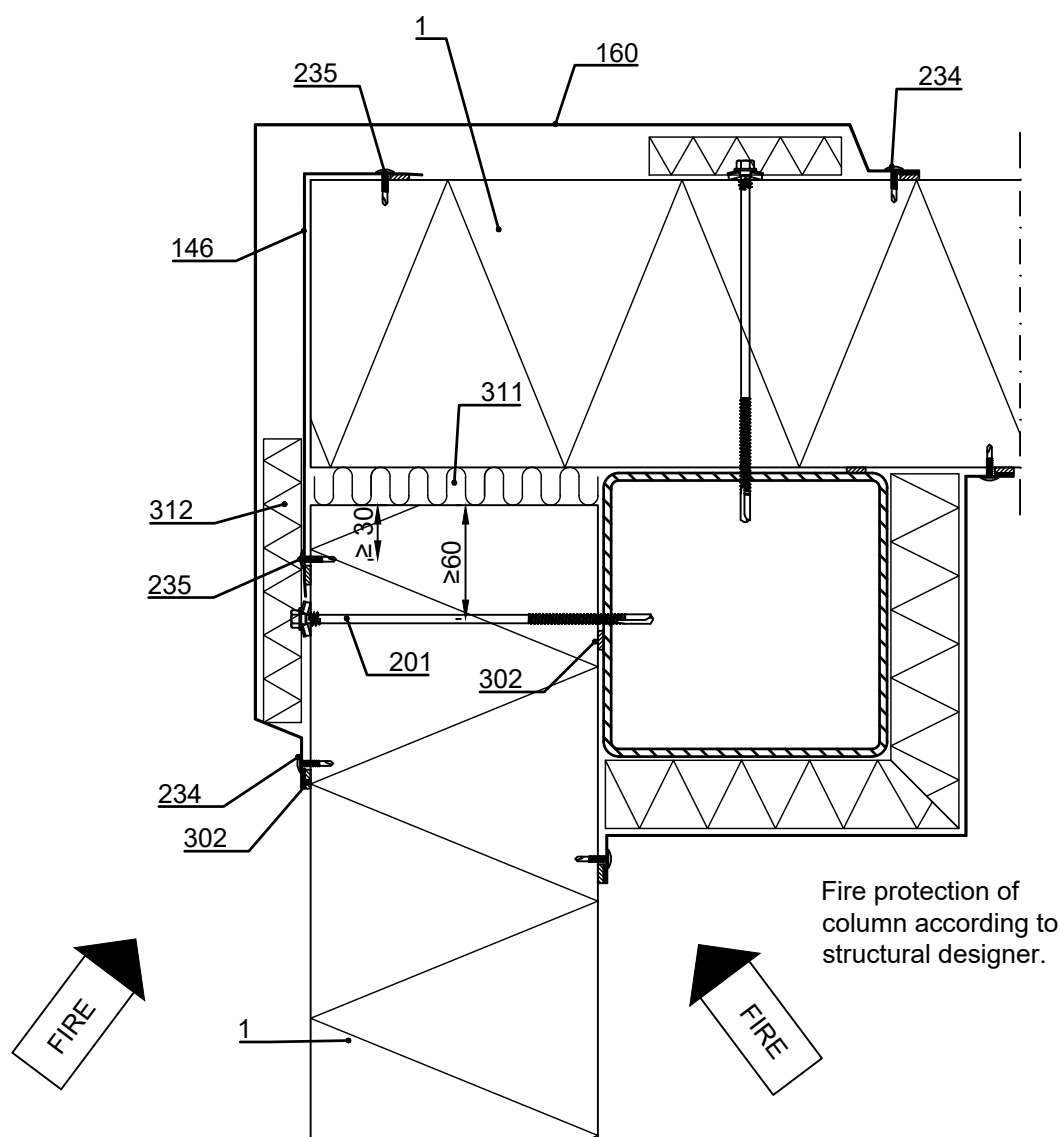
- ☐ 001. Sandwich panel SPA, horizontal installation
- ☐ 105. Steel bandings or steel sheets,  $t \geq 0,7$  mm, required in horizontal installation only
- ☐ 110. L-purlin, 50x50 or 60x60,  $t \geq 1,2$  mm, required in horizontal installation only
- ☐ 131. /EA1R18/ or other Cover flashing
- ☐ 158. /EA1R23/ Cover flashing

- ☐ 201. Self-drilling panel screw, washer with sealing
- ☐ 234. Flashing screw c/c 300 mm
- ☐ 235. Screw c/c 300 mm
- ☐ 302. /EA3SS410/ Sealing band
- ☐ 311. /EAWS5657850/ Mineral wool
- ☐ 312. /EAFW206001200/ Fire protection wool, mechanical fastening to surface

☒ Ruukki's delivery

Date 30.06.2023	Rev. date	Work nr.	Drawing nr. SPA32-FIRE-3E-EN
Drawn by Ruukki	Rev.		
Scale 1:4	Building		File nr.

Fire protection wool (e.g. FPS 17), mechanical fastening, thickness (mm)					
Structure	EI60	EI90	EI120	EI180	EI240
Wall	0	20	20	30	50



- ☐ 001. Sandwich panel SPA, horizontal or vertical inst.
- ☐ 146. /EA1EC9-\_\_\_/ External corner flashing
- ☐ 160. /EA1EC4/ External corner flashing (if panel thickness > 200 mm, or fire protection wool > 20 mm, flashing must be designed according to dimensions)
- ☐ 201. Self-drilling panel screw, washer with sealing
- ☐ 234. Flashing screw c/c 300 mm
- ☐ 235. Screw c/c 300 mm
- ☐ 302. /EA3SS410/ Sealing band
- ☐ 311. /EAWS5657850/ Mineral wool
- ☐ 312. /EAFW206001200/ Fire protection wool, mechanical fastening to surface

☒ Ruukki's delivery

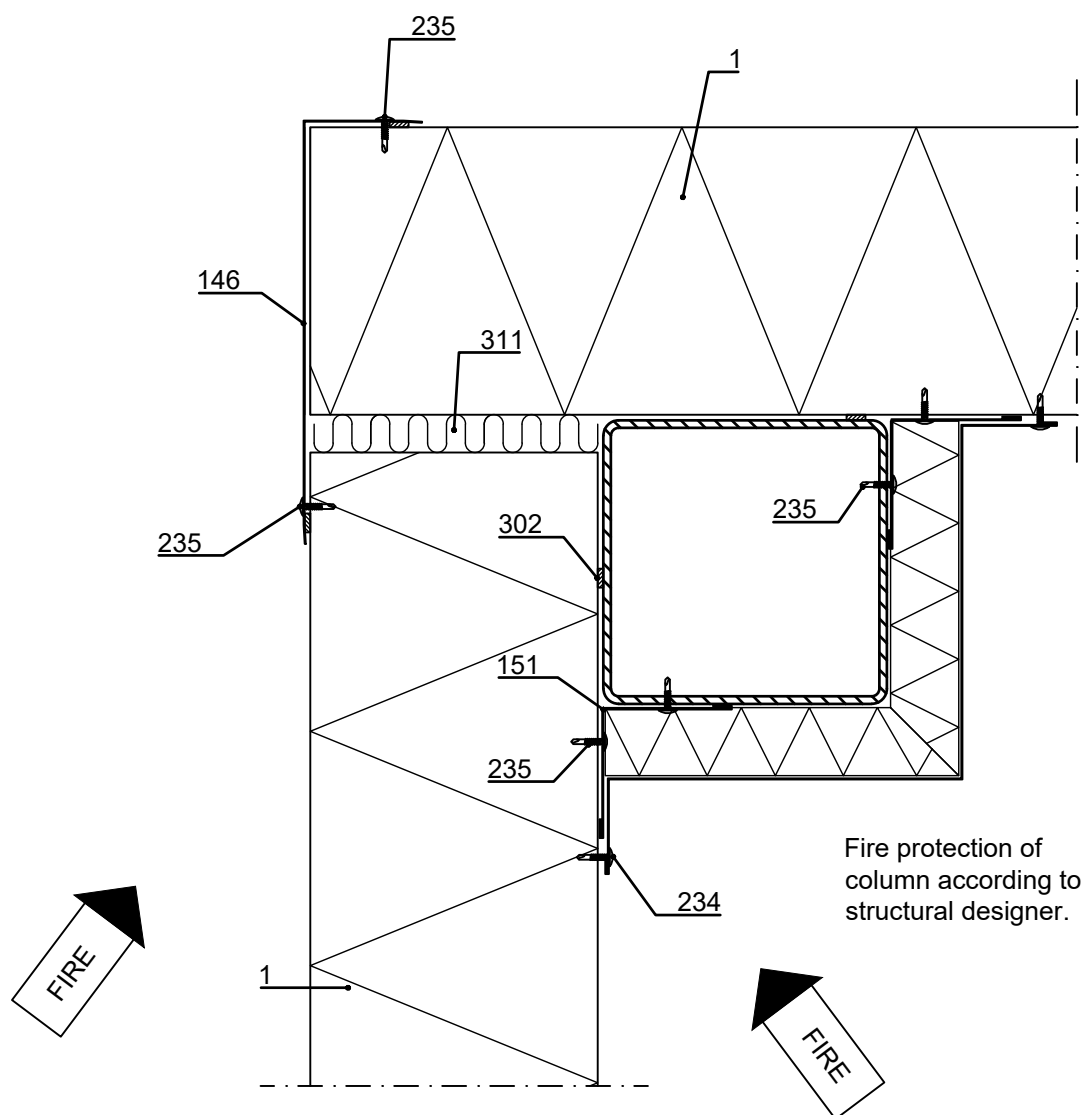


## Contents of drawing

Sandwich panel SPA compartment details  
Vertical installation,  
L-corner with column,  $\leq$  EI60, horizontal section

Date 30.06.2023	Rev. date	Work nr.	Drawing nr. SPA32-FIRE-4E-EN
Drawn by Ruukki	Rev.		
Scale 1:4	Building		File nr.

Note! This detail is only applicable when requirements for compartment walls are EI60 or less.  
Otherwise, see SPA32-FIRE-3E-EN.



- ☐ 001. Sandwich panel SPA, vertical installation
- ☐ 146. /EA1EC9-\_\_\_/ External corner flashing
- ☐ 151. /EA1IC2/ Internal corner flashing
- ☐ 302. /EA3SS410/ Sealing band

- ☐ 234. Flashing screw c/c 300 mm
- ☐ 235. Screw c/c 300 mm
- ☐ 311. /EAWS5657850/ Mineral wool

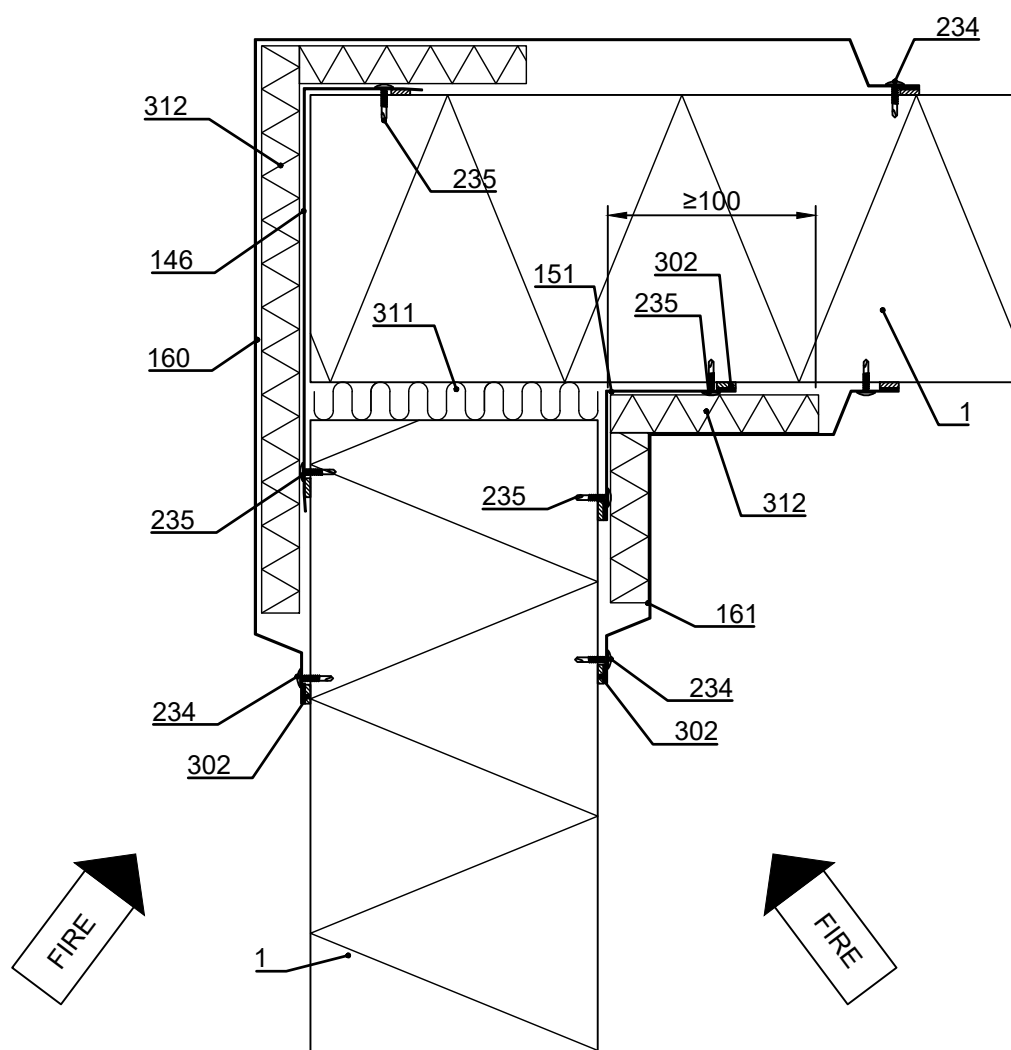
☒ Ruukki's delivery

Copyright © Ruukki Construction Oy. Allowed only for designs with Ruukki's products.

Date 30.06.2023	Rev. date	Work nr.	Drawing nr. SPA32-FIRE-5E-EN
Drawn by Ruukki	Rev.		
Scale 1:4	Building	File nr.	

Note! This detail is only applicable when requirements for compartment walls are EI60 or less, and when vertical panels don't require additional support structures (see roof fastening detail SPA33-FIRE-2E-EN).

Fire protection wool (e.g. FPS 17), mechanical fastening, thickness (mm)					
Structure	EI60	EI90	EI120	EI180	EI240
Wall	20	N/A	N/A	N/A	N/A

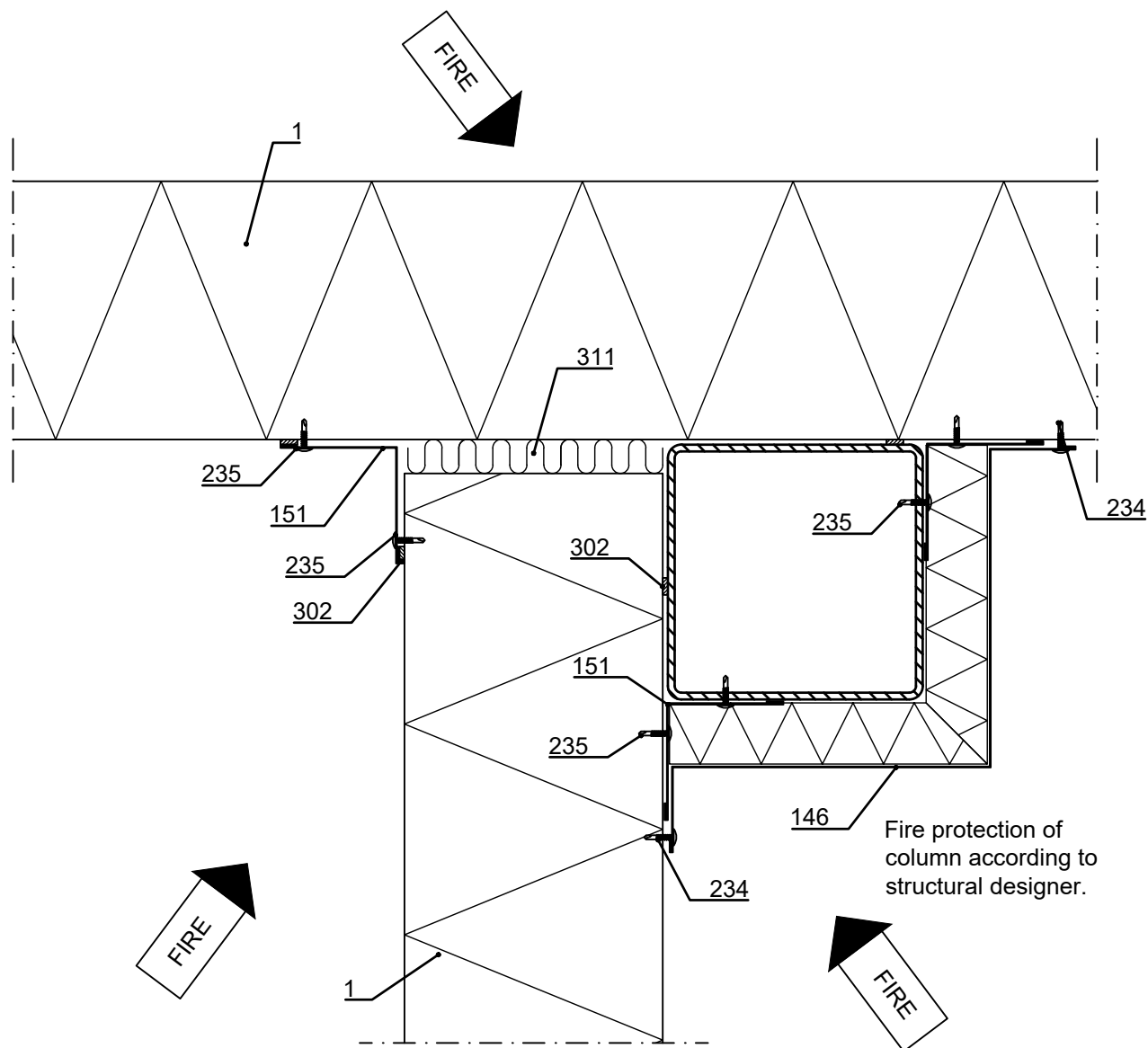


- ☐ 001. Sandwich panel SPA, horizontal or vertical inst.
- ☐ 146. /EA1EC9-\_\_\_/ External corner flashing
- ☐ 151. /EA1IC2/ Internal corner flashing
- ☐ 160. /EA1EC4/ External corner flashing
- ☐ 161. /EA1IC3/ Internal corner flashing
- ☐ 234. Flashing screw c/c 300 mm
- ☐ 235. Screw c/c 300 mm
- ☐ 302. /EA3SS410/ Sealing band
- ☐ 311. /EAWS5657850/ Mineral wool
- ☐ 312. /EAFW206001200/ Fire protection wool, mechanical fastening to surface

☒ Ruukki's delivery

Date 30.06.2023	Rev. date	Work nr.	Drawing nr. SPA32-FIRE-6E-EN
Drawn by Ruukki	Rev.		
Scale 1:4	Building		File nr.

Note! This detail is only applicable when requirements for compartment walls are EI60 or less.



- ☐ 001. Sandwich panel SPA, vertical installation
- ☐ 146. /EA1EC9-\_\_\_/ External corner flashing
- ☐ 151. /EA1IC2/ Internal corner flashing
- ☐ 302. /EA3SS410/ Sealing band

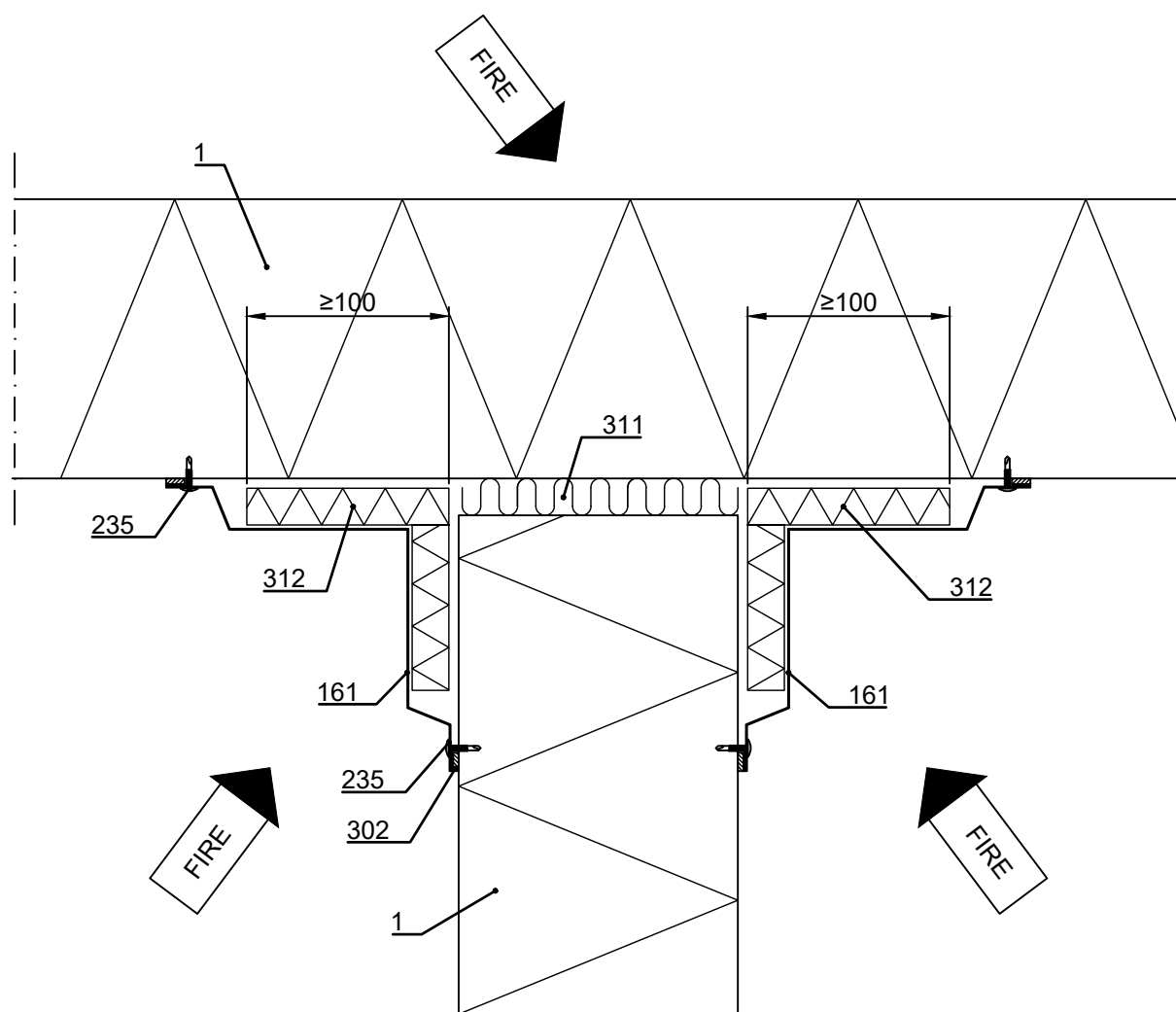
- ☐ 234. Flashing screw c/c 300 mm
- ☐ 235. Screw c/c 300 mm
- ☐ 311. /EAWS5657850/ Mineral wool

☒ Ruukki's delivery

Date 30.06.2023	Rev. date	Work nr.	Drawing nr. SPA32-FIRE-7E-EN
Drawn by Ruukki	Rev.		
Scale 1:4	Building	File nr.	

Note! This detail is only applicable when requirements for compartment walls are EI60 or less, and when vertical panels don't require additional support structures (see roof fastening detail SPA33-FIRE-2E-EN).

Fire protection wool (e.g. FPS 17), mechanical fastening, thickness (mm)					
Structure	EI60	EI90	EI120	EI180	EI240
Wall	20	N/A	N/A	N/A	N/A



- ☐ 001. Sandwich panel SPA, vertical installation
- ☐ 151. /EA1IC2/ Internal corner flashing
- ☐ 161. /EA1IC3/ Internal corner flashing
- ☐ 234. Flashing screw c/c 300 mm
- ☐ 235. Screw c/c 300 mm
- ☐ 302. /EA3SS410/ Sealing band
- ☐ 311. /EAWS5657850/ Mineral wool

☒ Ruukki's delivery

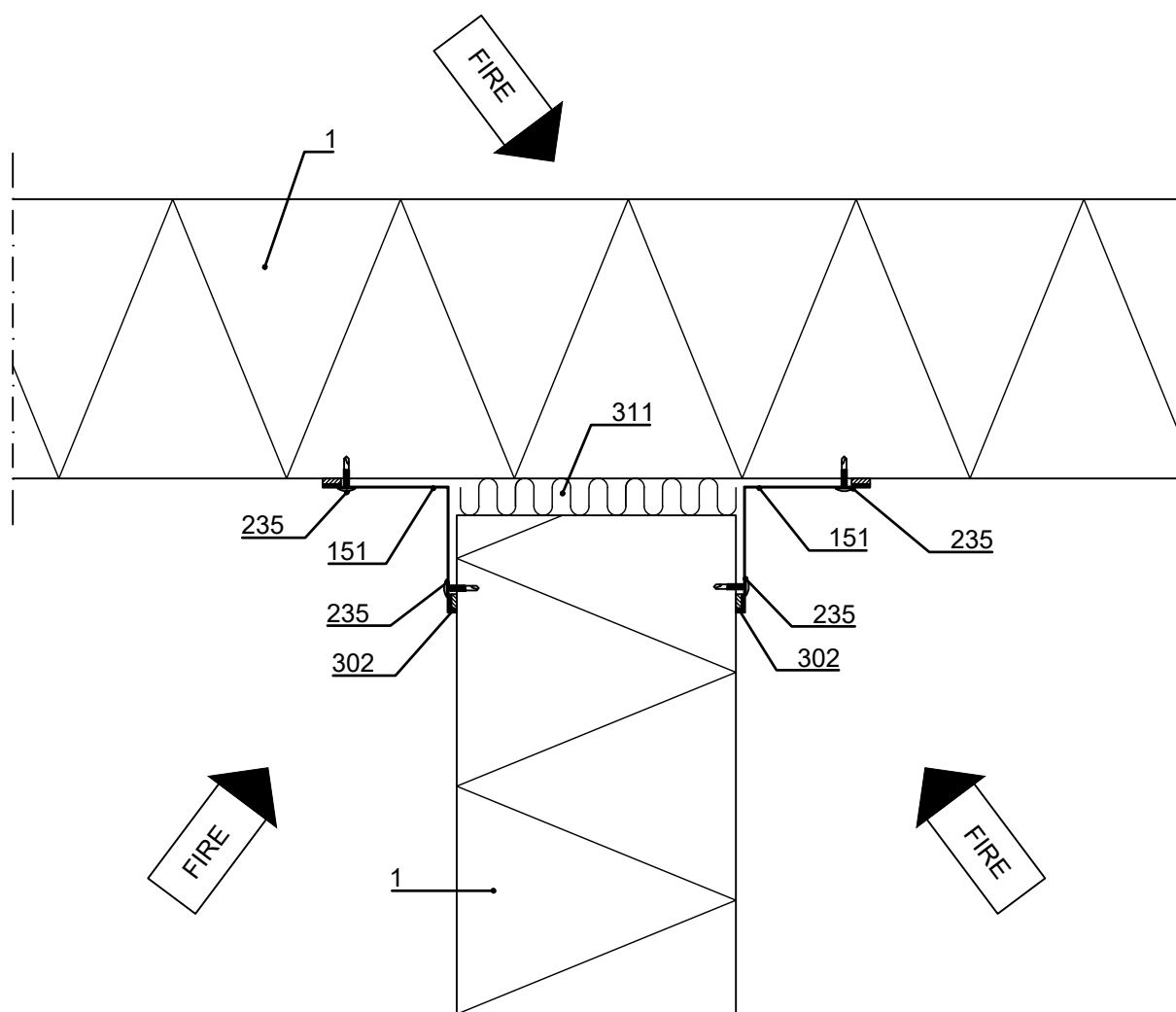


## Contents of drawing

Sandwich panel SPA compartment details  
Vertical installation, T-corner  
without column,  $\leq$  EI30, horizontal section

Date 30.06.2023	Rev. date	Work nr.	Drawing nr. SPA32-FIRE-8E-EN
Drawn by Ruukki	Rev.		
Scale 1:4	Building		File nr.

Note! This detail is only applicable when requirements for compartment walls are EI30 or less, and when vertical panels don't require additional support structures (see roof fastening detail SPA33-FIRE-2E-EN).



- ☐ 001. Sandwich panel SPA, vertical installation
- ☐ 151. /EA1IC2/ Internal corner flashing
- ☐ 234. Screw c/c 300 mm
- ☐ 302. /EA3SS410/ Sealing band
- ☐ 311. /EAWS5657850/ Mineral wool

☒ Ruukki's delivery

Copyright © Ruukki Construction Oy. Allowed only for designs with Ruukki's products.





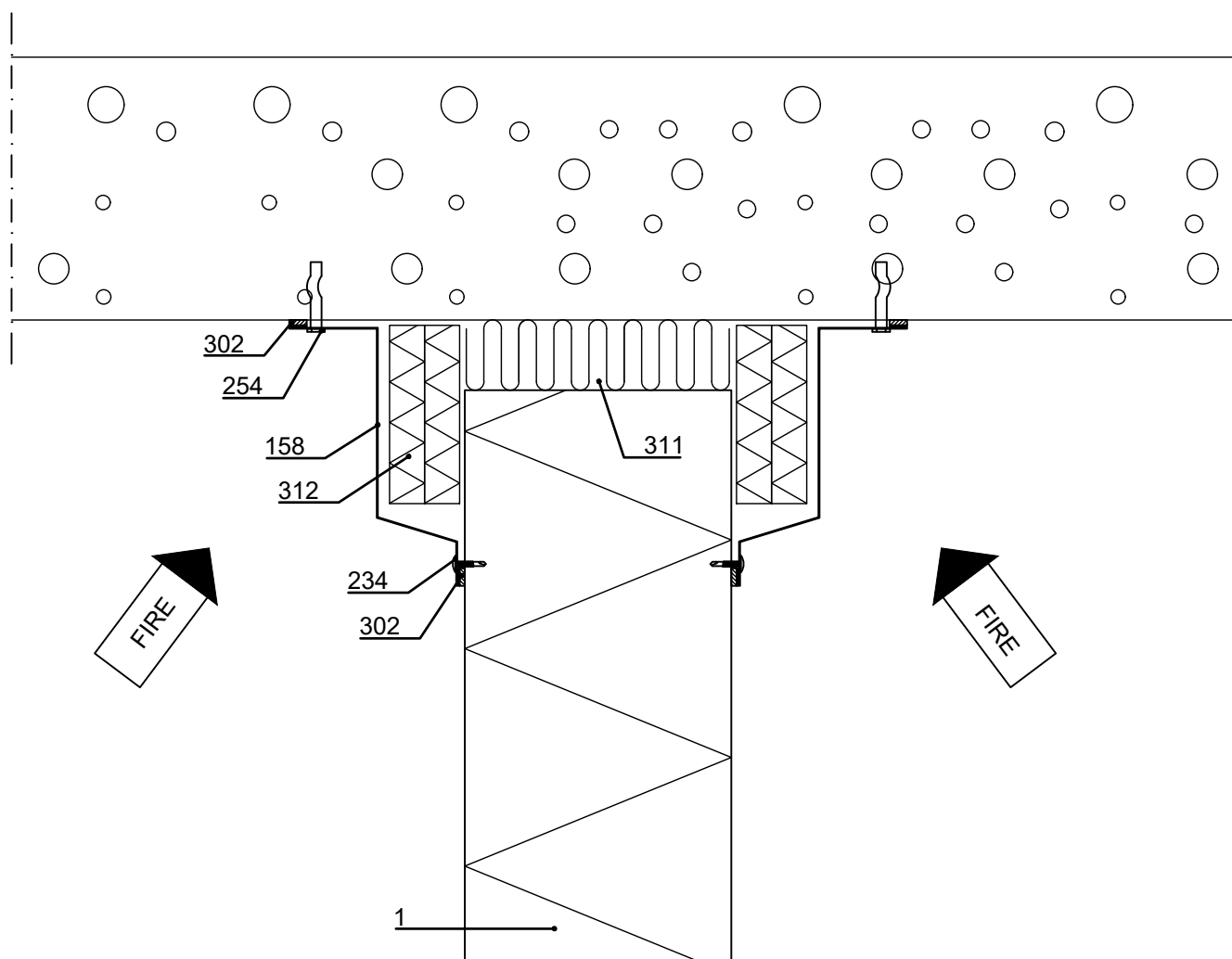
Contents of drawing

Sandwich panel SPA compartment details  
Horizontal installation,  
fastening to concrete roof, vertical section

Date 30.06.2023	Rev. date	Work nr.	Drawing nr. SPA33-FIRE-1E-EN
Drawn by Ruukki	Rev.		
Scale 1:4	Building		File nr.

Fire protection wool (e.g. FPS 17), mechanical fastening, thickness (mm)

Structure	EI60	EI90	EI120	EI180	EI240
Wall	0	20	20	30	50



- ☐ 001. Sandwich panel SPA, horizontal installation
- ☐ 158. /EA1R23/ Cover flashing
- ☐ 234. Flashing screw c/c 300 mm
- ☐ 254. Spike-fastener

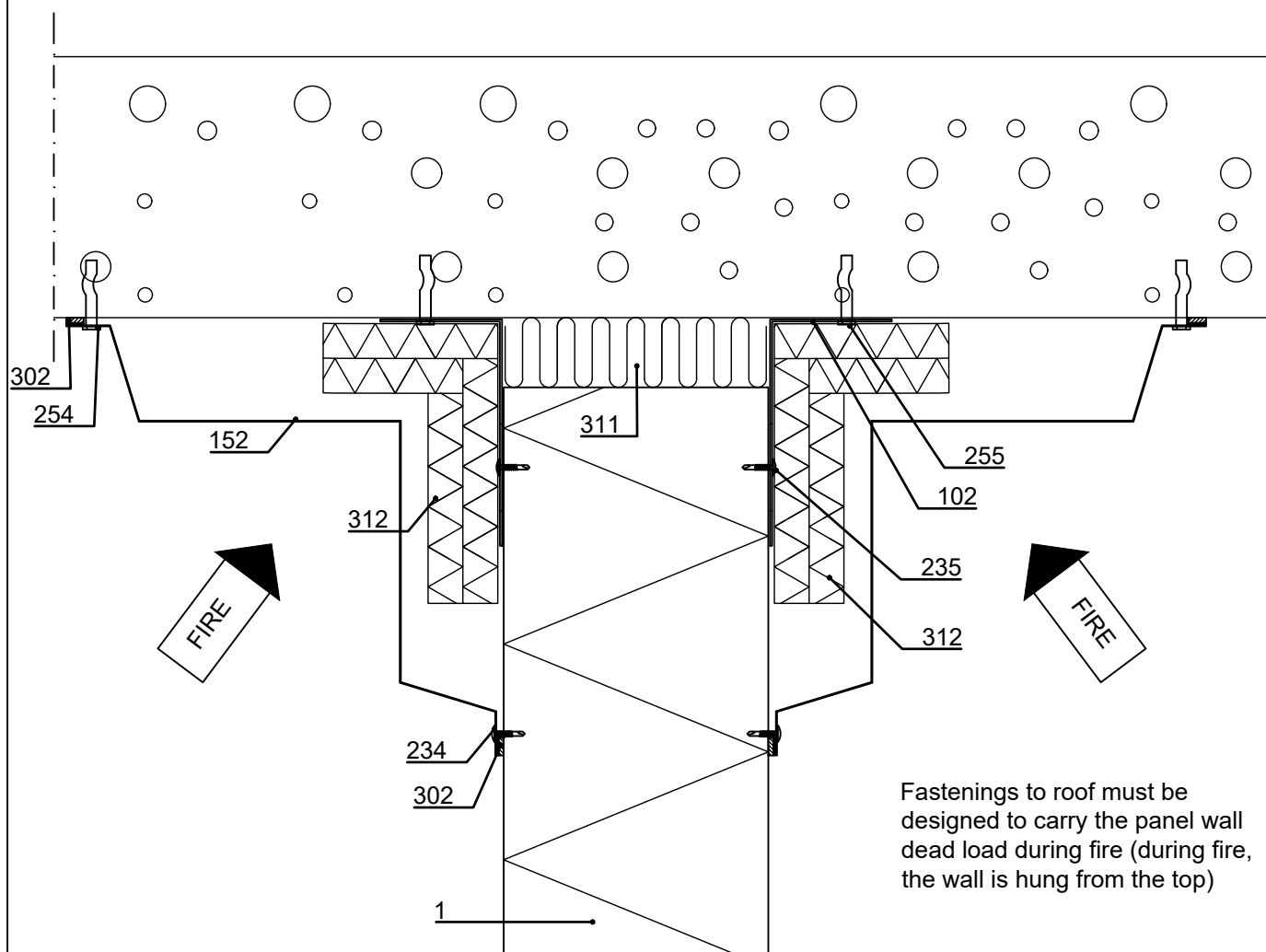
- ☐ 302. /EA3SS410/ Sealing band
- ☐ 311. /EAWS5657850/ Mineral wool
- ☐ 312. /EAFW206001200/ Fire protection wool, mechanical fastening to surface

☒ Ruukki's delivery

Copyright © Ruukki Construction Oy. Allowed only for designs with Ruukki's products.

Date 30.06.2023	Rev. date	Work nr.	Drawing nr. SPA33-FIRE-2E-EN
Drawn by Ruukki	Rev.		
Scale 1:4	Building	File nr.	

Fire protection wool (e.g. FPS 17), mechanical fastening, thickness (mm)					
Structure	EI60	EI90	EI120	EI180	EI240
Wall	0	20	20	30	50



Fastenings to roof must be designed to carry the panel wall dead load during fire (during fire, the wall is hung from the top)

- ☐ 001. Sandwich panel SPA, horizontal installation
- ☐ 102. /EA1FC5/ L-corner
- ☐ 152. /EA1R21/ Roof flashing
- ☐ 234. Flashing screw c/c 300 mm
- ☐ 235. Screw (according to structural designer)
- ☐ 254. Spike-fastener

- ☐ 255. Spike-fastener (according to structural designer)
- ☐ 302. /EA3SS410/ Sealing band
- ☐ 311. /EAWS5657850/ Mineral wool
- ☐ 312. /EAFW206001200/ Fire protection wool, mechanical fastening to surface

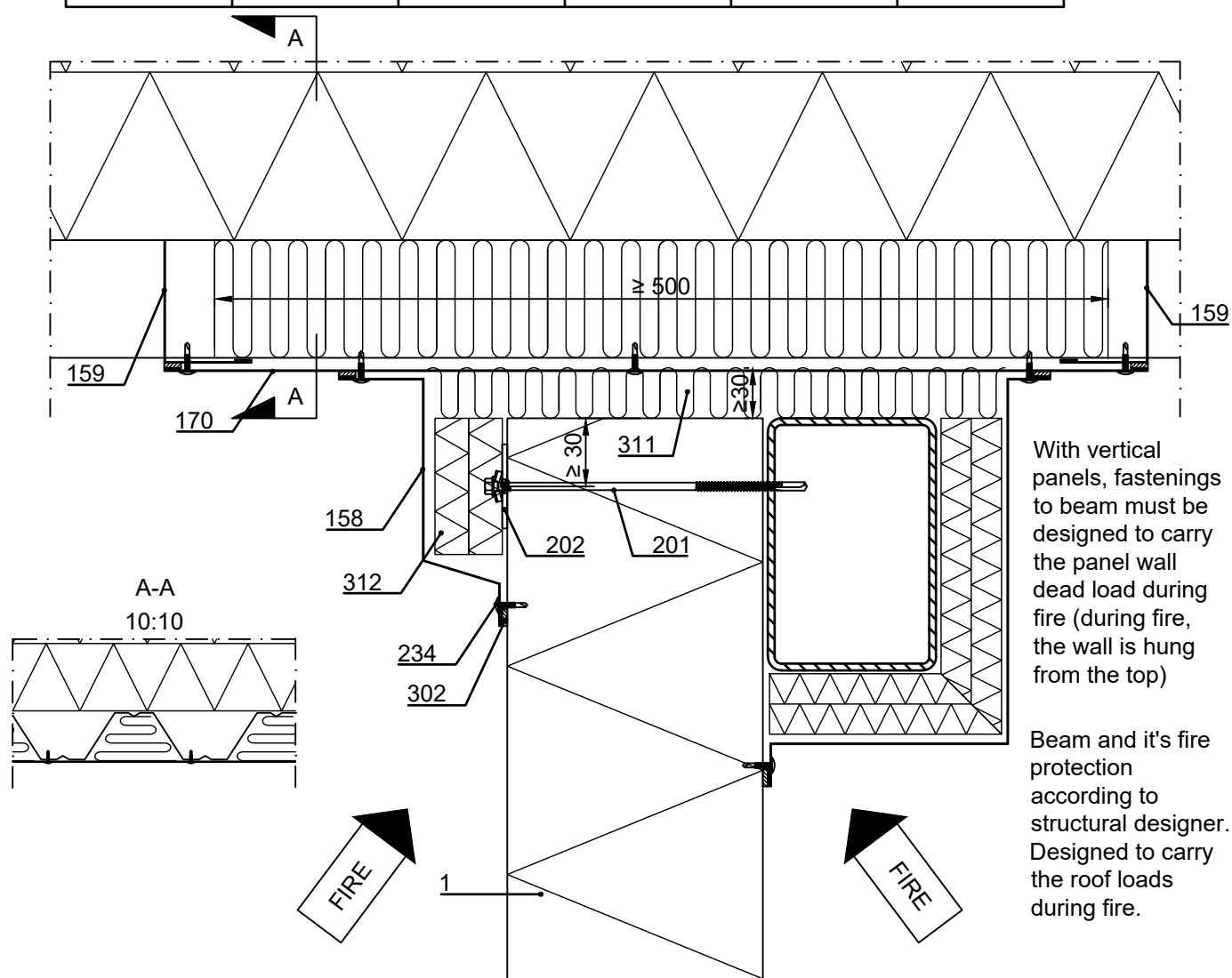
☒ Ruukki's delivery

## Sandwich panel SPA compartment details Horizontal or vertical installation, fastening to load-bearing sheet (span perpendicular)

Date	30.06.2023	Rev. date		Work nr.		Drawing nr.	SPA35-FIRE-1E-EN
Drawn by	Ruukki	Rev.					
Scale	1:4	Building				File nr.	

Note! This detail is used for cases where the fire resistance of the load-bearing roof sheets is much lower (e.g R15) than the fire resistance of the compartment walls (EI30-E240). In these cases the compartment walls cannot be supported only from the load-bearing sheets; additional beam is required to carry the roof loads during fire.

Fire protection wool (e.g. FPS 17), mechanical fastening, thickness (mm)					
Structure	EI60	EI90	EI120	EI180	EI240
Wall	0	20	20	30	50



With vertical panels, fastenings to beam must be designed to carry the panel wall dead load during fire (during fire, the wall is hung from the top)

Beam and it's fire protection according to structural designer. Designed to carry the roof loads during fire.

- ☐ 001. Sandwich panel SPA, horizontal or vertical inst.
- ☐ 158. /EA1R23/ Cover flashing
- ☐ 159. /EA1CFT\_\_\_\_\_LB/ Closure flashing, bent
- ☐ 170. Flat steel sheet
- ☐ 201. Self-drilling panel screw, washer with sealing
- ☐ 202. Large washer, 50x50 mm, t ≥ 2 mm, required for vertical panel installations only
- ☐ 234. Flashing screw c/c 300 mm
- ☐ 302. /EA3SS410/ Sealing band
- ☐ 311. /EAWS5657850/ Mineral wool
- ☐ 312. /EAFW206001200/ Fire protection wool, mechanical fastening to surface

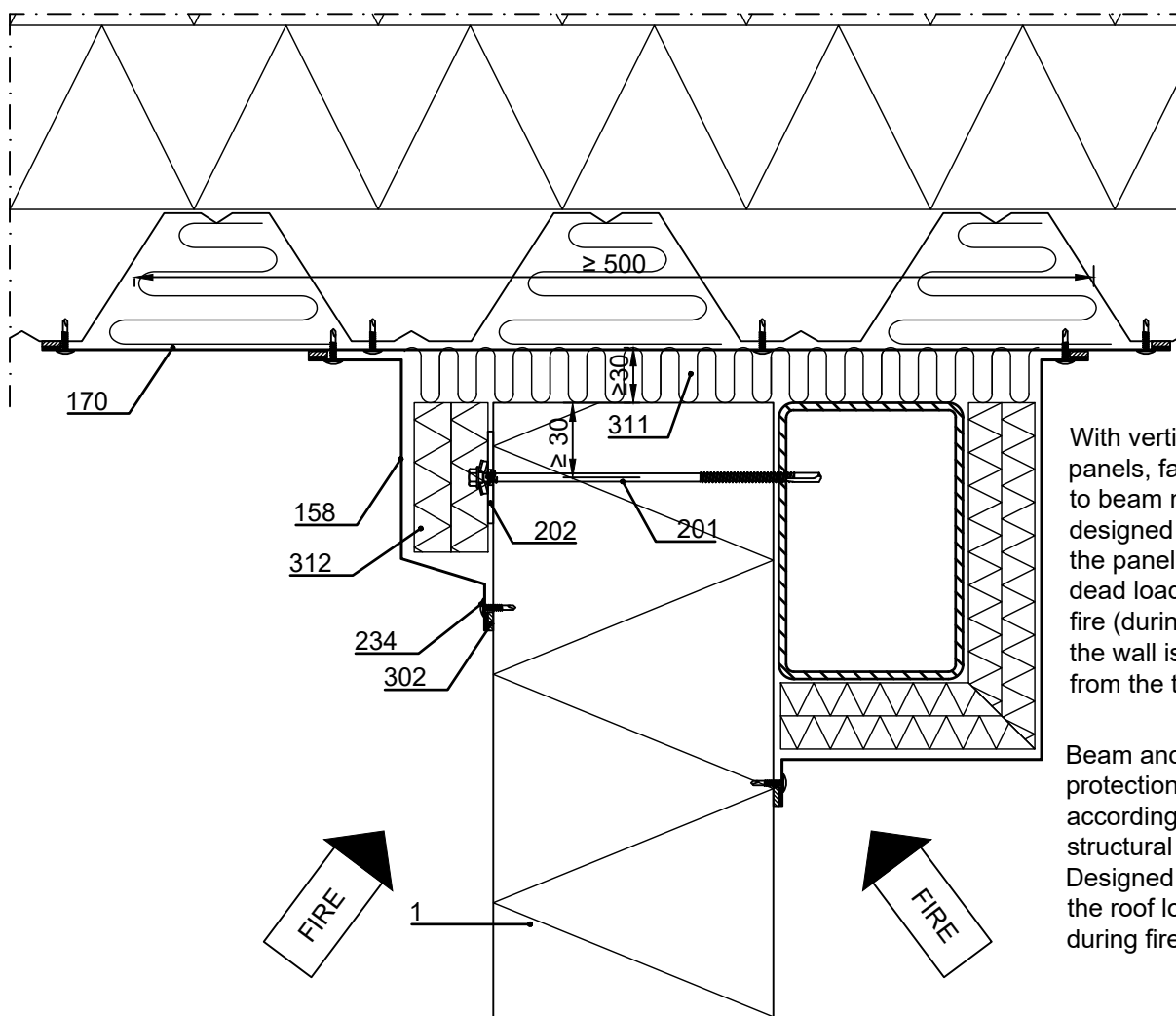
☒ Ruukki's delivery

## Sandwich panel SPA compartment details Horizontal or vertical installation, fastening to load-bearing sheet (span parallel)

Date 30.06.2023	Rev. date	Work nr.	Drawing nr. SPA35-FIRE-2E-EN
Drawn by Ruukki	Rev.		
Scale 1:4	Building	File nr.	

Note! This detail is used for cases where the fire resistance of the load-bearing roof sheets is much lower (e.g R15) than the fire resistance of the compartment walls (EI30-E240). In these cases the compartment walls cannot be supported only from the load-bearing sheets; additional beam is required to carry the roof loads during fire. Although, when roof sheet span is parallel to compartment walls and load transfer to compartment walls is prevented by fire protecting the roof sheet, alternative detail can be used (see SPA35-FIRE-3E-EN).

Fire protection wool (e.g. FPS 17), mechanical fastening, thickness (mm)					
Structure	EI60	EI90	EI120	EI180	EI240
Wall	0	20	20	30	50



With vertical panels, fastenings to beam must be designed to carry the panel wall dead load during fire (during fire, the wall is hung from the top)

Beam and it's fire protection according to structural designer. Designed to carry the roof loads during fire.

- ☐ 001. Sandwich panel SPA, horizontal or vertical inst.
- ☐ 158. /EA1R23/ Cover flashing
- ☐ 170. Flat steel sheet
- ☐ 201. Self-drilling panel screw, washer with sealing
- ☐ 202. Large washer, 50x50 mm, t ≥ 2 mm, required for vertical panel installations only

- ☐ 234. Flashing screw c/c 300 mm
- ☐ 302. /EA3SS410/ Sealing band
- ☐ 311. /EAWS5657850/ Mineral wool
- ☐ 312. /EAFW206001200/ Fire protection wool, mechanical fastening to surface

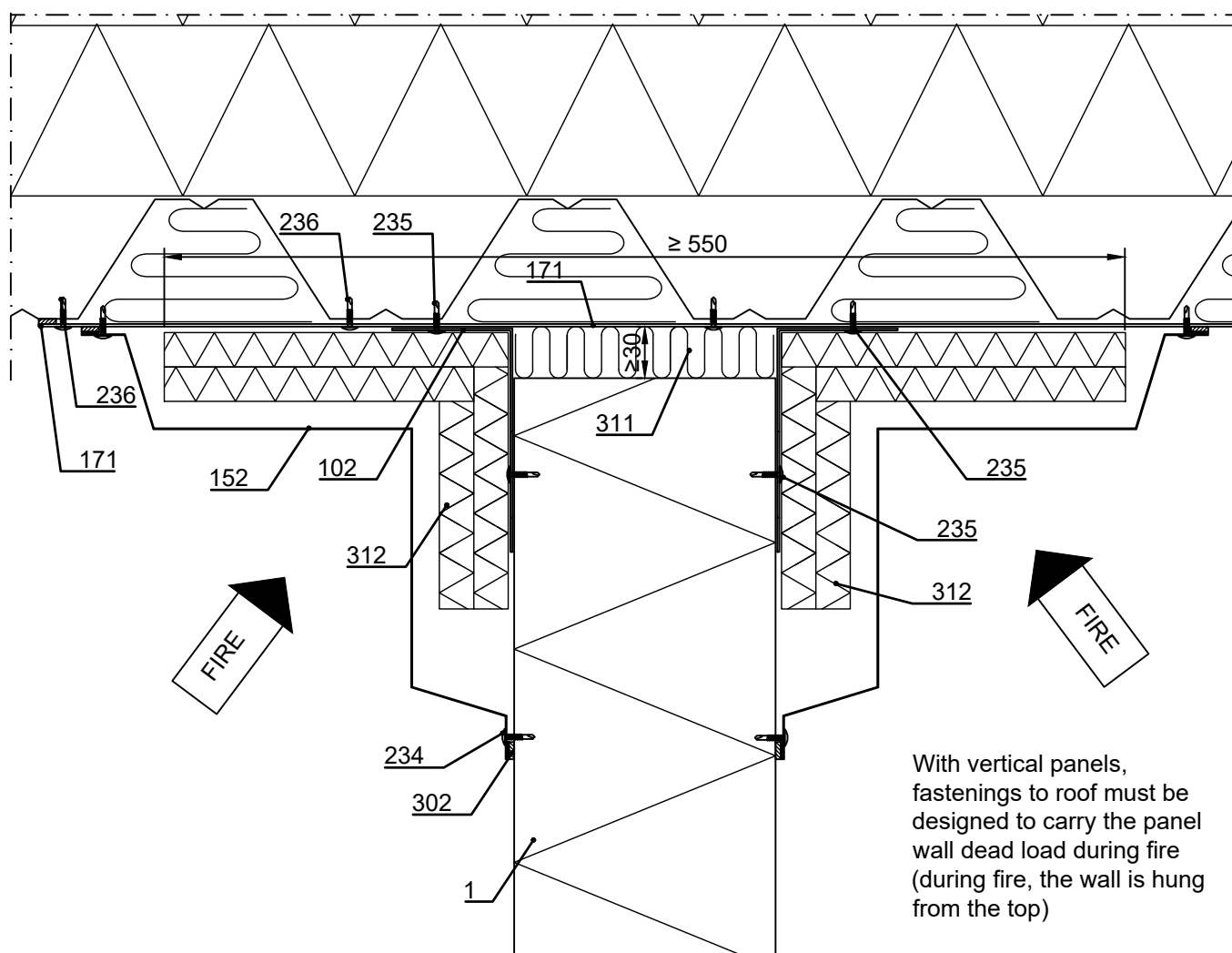
☒ Ruukki's delivery

## Sandwich panel SPA compartment details Horizontal or vertical installation, fastening to load-bearing sheet (span parallel), ≤ EI120

Date 30.06.2023	Rev. date	Work nr.	Drawing nr. SPA35-FIRE-3E-EN
Drawn by Ruukki	Rev.		
Scale 1:4	Building	File nr.	

Note! This detail is only applicable when load-bearing roof sheet span is parallel to compartment walls and load transfer to compartment walls during fire is prevented by fire protecting the roof sheet, and when requirements for compartment walls are EI120 or less. Otherwise, see SPA35-FIRE-1E-EN and SPA35-FIRE-2E-EN.

Fire protection wool (e.g. FPS 17), mechanical fastening, thickness (mm)						
Structure	EI30	EI60	EI90	EI120	EI180	EI240
Wall	0	0	20	20	30	50
Roof	0	20	30	50	n/a	n/a



With vertical panels,  
fastenings to roof must be  
designed to carry the panel  
wall dead load during fire  
(during fire, the wall is hung  
from the top)

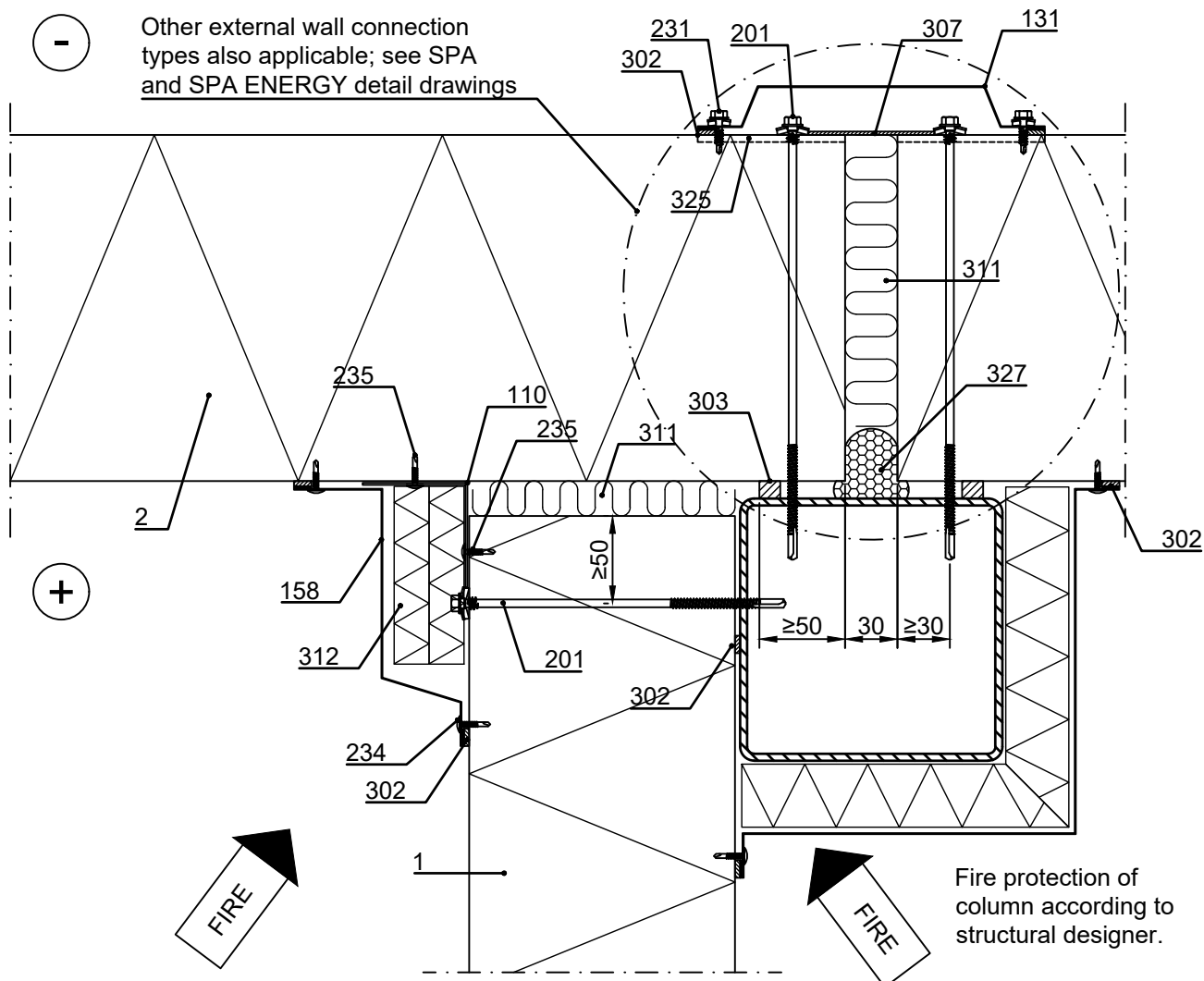
- ☐ 001. Sandwich panel SPA, horizontal or vertical inst.
- ☐ 102. /EA1FC5/ L-corner
- ☐ 152. /EA1R21/ Roof flashing
- ☐ 171. Flat steel sheet, t = 0.7 - 2.5 mm
- ☐ 234. Flashing screw c/c 300 mm
- ☐ 235. Screw (according to structural designer)
- ☐ 236. Screw (according to structural designer)
- ☐ 302. /EA3SS410/ Sealing band
- ☐ 311. /EAWS5657850/ Mineral wool mechanical fastening to surface
- ☐ 312. /EAFW206001200/ Fire protection wool,

☒ Ruukki's delivery

## Sandwich panel SPA compartment details Horizontal (or vertical) installation, fastening to external wall, horizontal section

Date 30.06.2023	Rev. date	Work nr.	Drawing nr. SPA36-FIRE-1E-EN
Drawn by Ruukki	Rev.		
Scale 1:4	Building		File nr.

Fire protection wool (e.g. FPS 17), mechanical fastening, thickness (mm)					
Structure	EI60	EI90	EI120	EI180	EI240
Wall	0	20	20	30	50



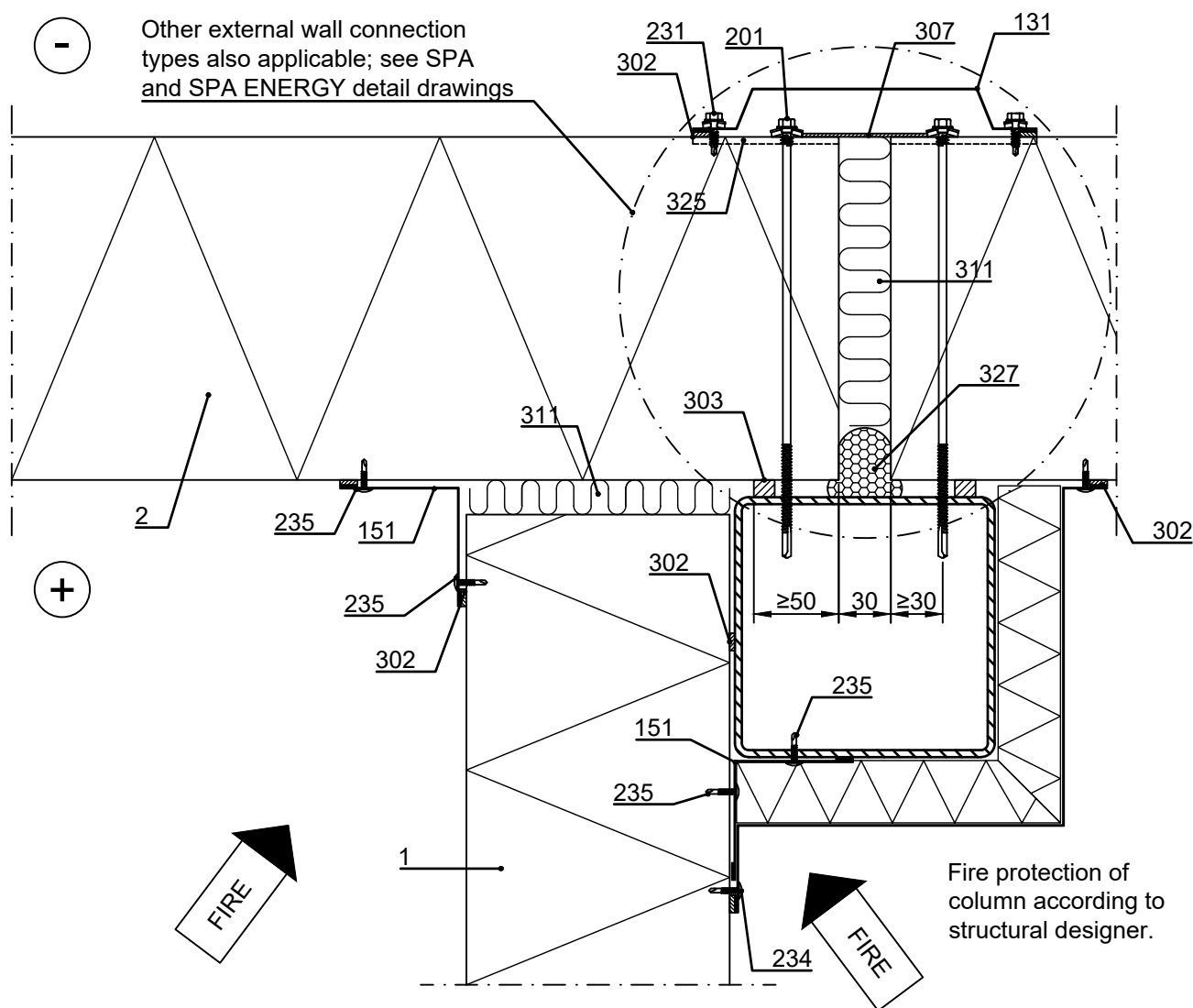
- ☐ 001. Sandwich panel SPA, horizontal or vertical inst.
- ☐ 002. Sandwich panel SPA, SPA ENERGY or SPA E LIFE, horizontal installation
- ☐ 110. L-purlin, 50x50 or 60x60,  $t \geq 1,2$  mm
- ☐ 131. /EA1JV1/ Vertical joint flashing
- ☐ 158. /EA1R23/ Cover flashing
- ☐ 201. Self-drilling panel screw, washer with sealing
- ☐ 231. Flashing fastener, washer with sealing
- ☐ 234. Flashing screw c/c 300 mm
- ☐ 235. Screw c/c 300 mm
- ☐ 302. /EA3SS410/ Sealing band, or /EA3SS510/ Sealing band EPDM for flashing (for demanding climate conditions e.g. coastal areas)
- ☐ 303. /EA3SS1210/ Sealing strip
- ☐ 307. /EA3JS7525/ Joint sealing
- ☐ 311. /EAWS5657850/ Mineral wool
- ☐ 312. /EAFW206001200/ Fire protection wool, mechanical fastening to surface
- ☐ 325. Ruukki silicone during installation to outer female groove in length equivalent to vertical joint flashing width
- ☐ 327. Elastic polyurethane foam

☒ Ruukki's delivery

## Sandwich panel SPA compartment details Vertical installation, fastening to external wall, ≤ EI60, horizontal section

Date 30.06.2023	Rev. date	Work nr.	Drawing nr. SPA36-FIRE-2E-EN
Drawn by Ruukki	Rev.		
Scale 1:4	Building		File nr.

Note! This detail is only applicable when requirements for compartment walls are EI60 or less. Otherwise, see SPA36-FIRE-1E-EN.



- ☐ 001. Sandwich panel SPA, vertical installation
- ☐ 002. Sandwich panel SPA, SPA ENERGY or SPA E LIFE, horizontal installation
- ☐ 131. /EA1JV1/ Vertical joint flashing
- ☐ 151. /EA1IC2/ Internal corner flashing
- ☐ 201. Self-drilling panel screw, washer with sealing
- ☐ 231. Flashing fastener, washer with sealing
- ☐ 234. Flashing screw c/c 300 mm
- ☐ 235. Screw c/c 300 mm

- ☐ 302. /EA3SS410/ Sealing band, or /EA3SS510/ Sealing band EPDM for flashing (for demanding climate conditions e.g. coastal areas)
- ☐ 303. /EA3SS1210/ Sealing strip
- ☐ 307. /EA3JS7525/ Joint sealing
- ☐ 311. /EAWS5657850/ Mineral wool
- ☐ 325. Ruukki silicone during installation to outer female groove in length equivalent to vertical joint flashing width
- ☐ 327. Elastic polyurethane foam

☒ Ruukki's delivery

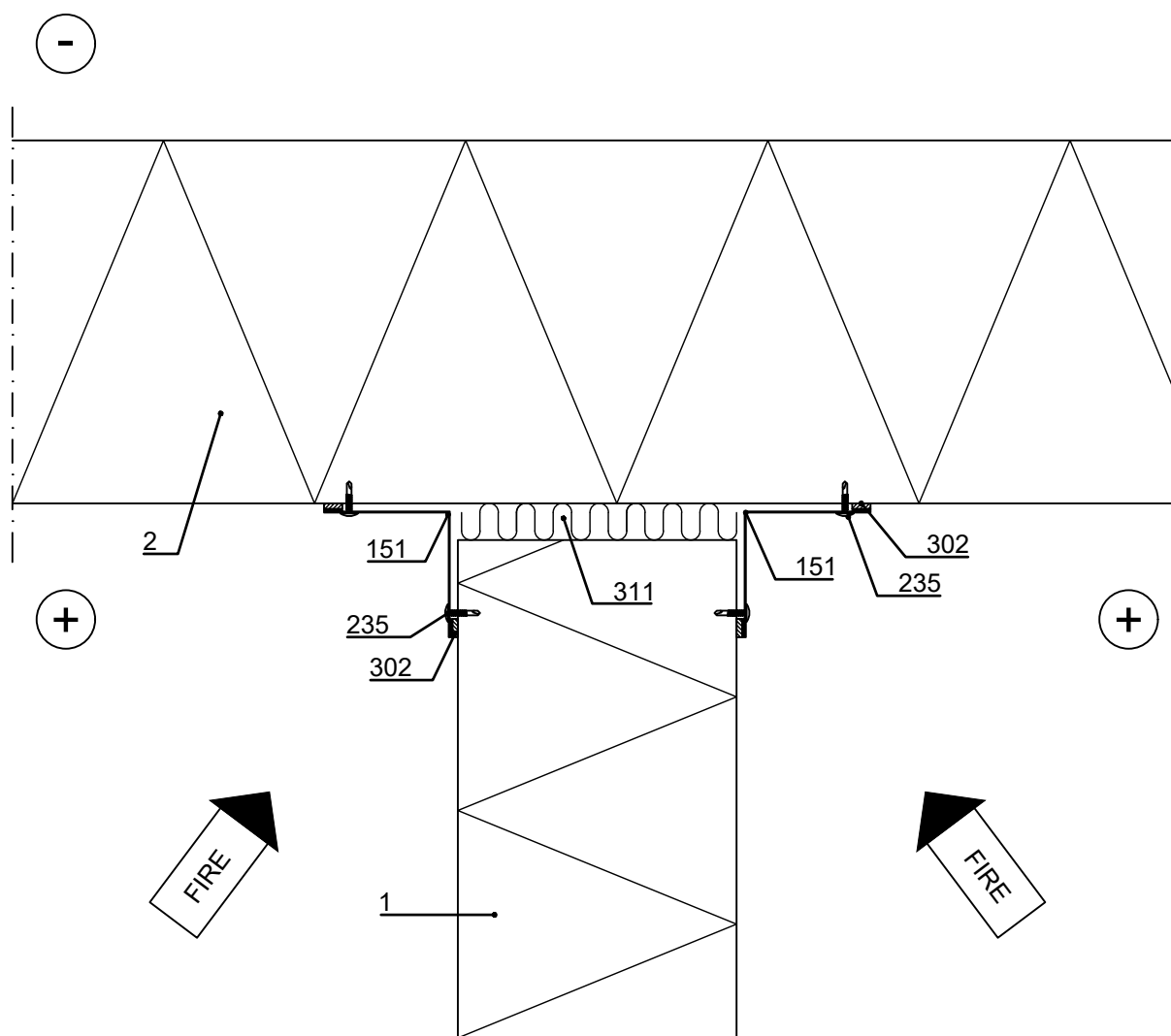


## Contents of drawing

Sandwich panel SPA compartment details  
Vertical installation, fastening to  
external wall,  $\leq$  EI30, horizontal section

Date 30.06.2023	Rev. date	Work nr.	Drawing nr. SPA36-FIRE-3E-EN
Drawn by Ruukki	Rev.		
Scale 1:4	Building		File nr.

Note! This detail is only applicable when requirements for compartment walls are EI30 or less, and when vertical panels don't require additional support structures (see roof fastening details SPA33-FIRE-2E-EN and SPA35-FIRE-3E-EN). Otherwise, see external wall fastening details SPA36-FIRE-1E-EN or SPA36-FIRE-2E-EN. If requirement is EI60 or less, see SPA36-FIRE-4E-EN.



- ☐ 001. Sandwich panel SPA, vertical installation
- ☐ 002. Sandwich panel SPA, SPA ENERGY or SPA E LIFE
- ☐ 151. /EA1IC2/ Internal corner flashing
- ☐ 235. Screw c/c 300 mm
- ☐ 302. /EA3SS410/ Sealing band
- ☐ 311. /EAWS5657850/ Mineral wool
- ☒ Ruukki's delivery

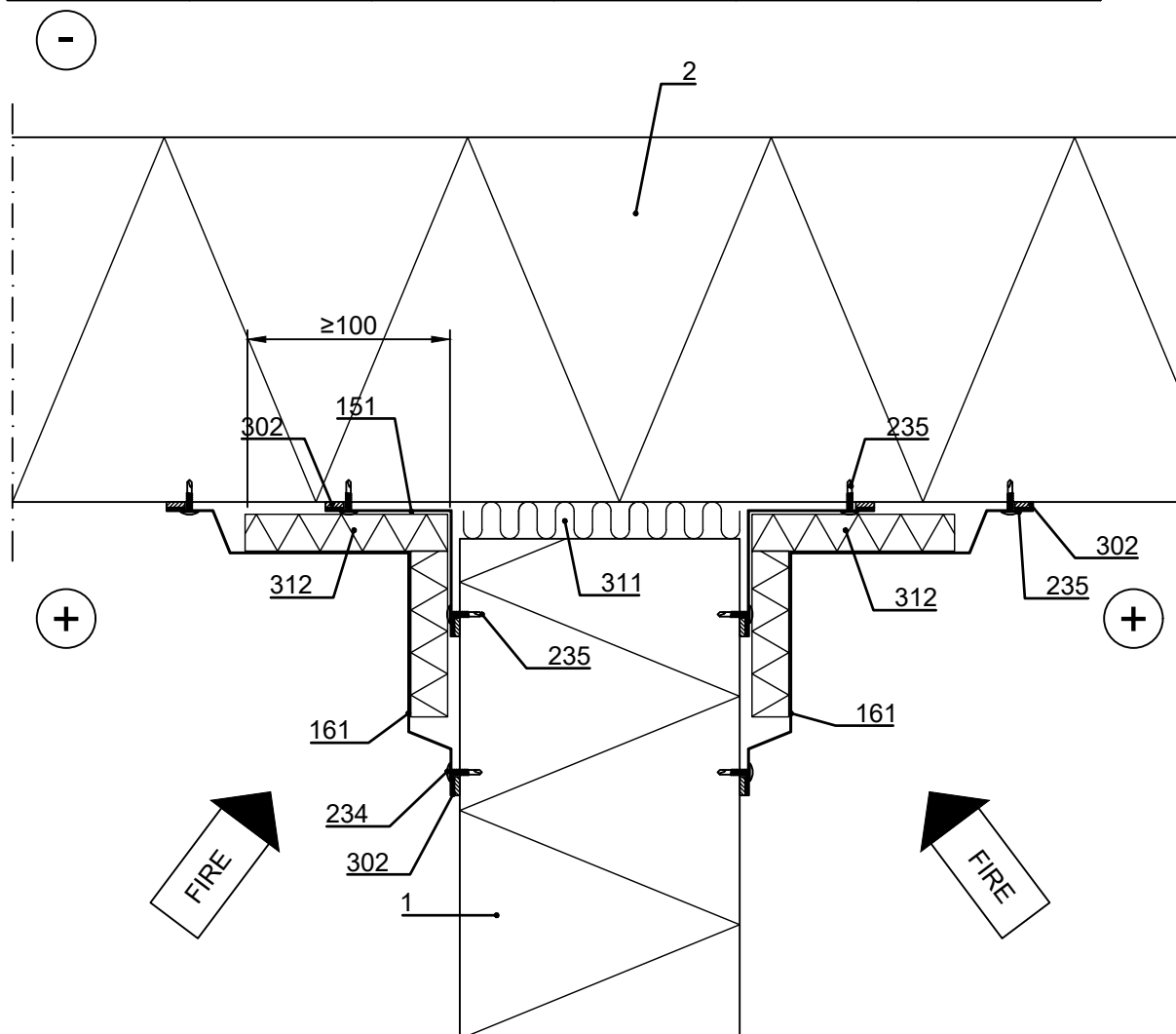


## Sandwich panel SPA compartment details Vertical installation, fastening to external wall, ≤ EI60, horizontal section

Date 30.06.2023	Rev. date	Work nr.	Drawing nr. SPA36-FIRE-4E-EN
Drawn by Ruukki	Rev.		
Scale 1:4	Building	File nr.	

Note! This detail is only applicable when requirements for compartment walls are EI60 or less, and when vertical panels don't require additional support structures (see roof fastening details SPA33-FIRE-2E-EN and SPA35-FIRE-3E-EN). Otherwise, see external wall fastening details SPA36-FIRE-1E-EN or SPA36-FIRE-2E-EN. If requirement is EI30 or less, see SPA36-FIRE-3E-EN.

Fire protection wool (e.g. FPS 17), mechanical fastening, thickness (mm)					
Structure	EI60	EI90	EI120	EI180	EI240
Wall	20	N/A	N/A	N/A	N/A



- ☐ 001. Sandwich panel SPA, vertical installation
- ☐ 002. Sandwich panel SPA, SPA ENERGY or SPA E LIFE
- ☐ 151. /EA1IC2/ Internal corner flashing
- ☐ 161. /EA1IC3/ Internal corner flashing
- ☒ Ruukki's delivery
- ☐ 234. Flashing screw c/c 300 mm
- ☐ 235. Screw c/c 300 mm
- ☐ 302. /EA3SS410/ Sealing band
- ☐ 311. /EAWS5657850/ Mineral wool