


Drawing nr.	Contents of drawing
-------------	---------------------

SP2E-COLD-01-EN	Joint between panels
SP2E-COLD-02-EN	Vertical joint, horizontal installation
SP2E-COLD-03-EN	Vertical joint, horizontal installation
SP2E-COLD-04-EN	Joint between ceiling panels
SP2E-COLD-05-EN	Joint between ceiling panels
SP2E-COLD-06-EN	Joint between ceiling panels
SP2E-COLD-07-EN	Joint between ceiling panels
SP2E-COLD-08-EN	External corner, vertical inst.
SP2E-COLD-09-EN	External corner, vertical inst.
SP2E-COLD-10-EN	External corner, horizontal inst.
SP2E-COLD-11-EN	Joint between ceiling and wall, horizontal inst.
SP2E-COLD-12-EN	Joint between ceiling and wall, horizontal inst.
SP2E-COLD-13-EN	Joint between ceiling and wall, vertical inst.
SP2E-COLD-14-EN	Cold store door
SP2E-COLD-15-EN	Cold store sliding door
SP2E-COLD-16-EN	Cold store overhead door - example
SP2E-COLD-17-EN	Compensation insulation on columns, Ceiling
SP2E-COLD-18-EN	Connection to foundations with an outer wall
SP2E-COLD-19-EN	Connection to the ceiling with an outer wall
SP2E-COLD-20-EN	Compensation insulation on columns with an outer wall, floor
SP2E-COLD-21-EN	Compensation insulation on columns with an outer wall, dropped ceiling
SP2E-COLD-22-EN	Connection to floor, partition
SP2E-COLD-23-EN	Penetrations
SP2E-COLD-24-EN	Sprinkler installation

City sector	Block	Site/Reg. nr.	File nr.		
Building type			Drawing type		
Building, Name and address			Nr.		
			Contents of drawing		Scale
			Sandwich panel SP2E COLD STORAGE DETAILS		
Date	Designer	Work nr.	Work nr.	Drw. nr.	Rev.
15.04.2021					
Drawn by	Checked				
Ruukki					

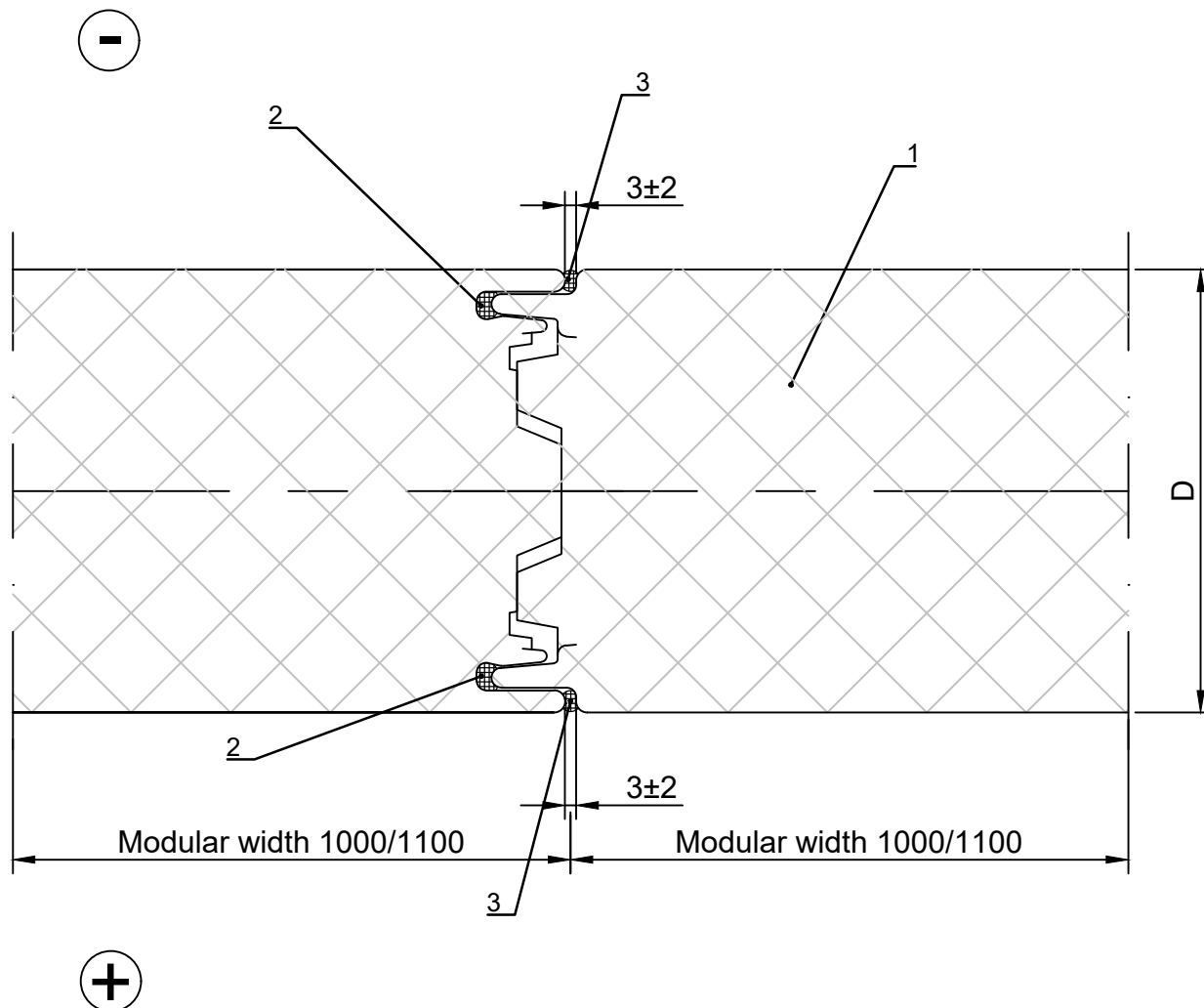


Contents of drawing

Ruukki SP2E PIR,
Joint between panels

Date 15.04.2021	Rev. date	Work nr.	Drawing nr. SP2E-COLD-01-EN
Drawn by Ruukki	Rev.		
Scale 1:2	Building		File nr.

For temperature range between
 $-50^{\circ}\text{C} < t < +15^{\circ}\text{C}$



- ☐ 1. Ruukki SP2E PIR panel
- ☐ 2. Elastic sealing strip
- ☐ 3. Permanently elastic sealing compound in the groove joint to the length of 200 mm from the end of the element- applied during installation

☒ Ruukki's delivery

Copyright © Ruukki Construction Oy. Allowed only for designs with Ruukki's products.



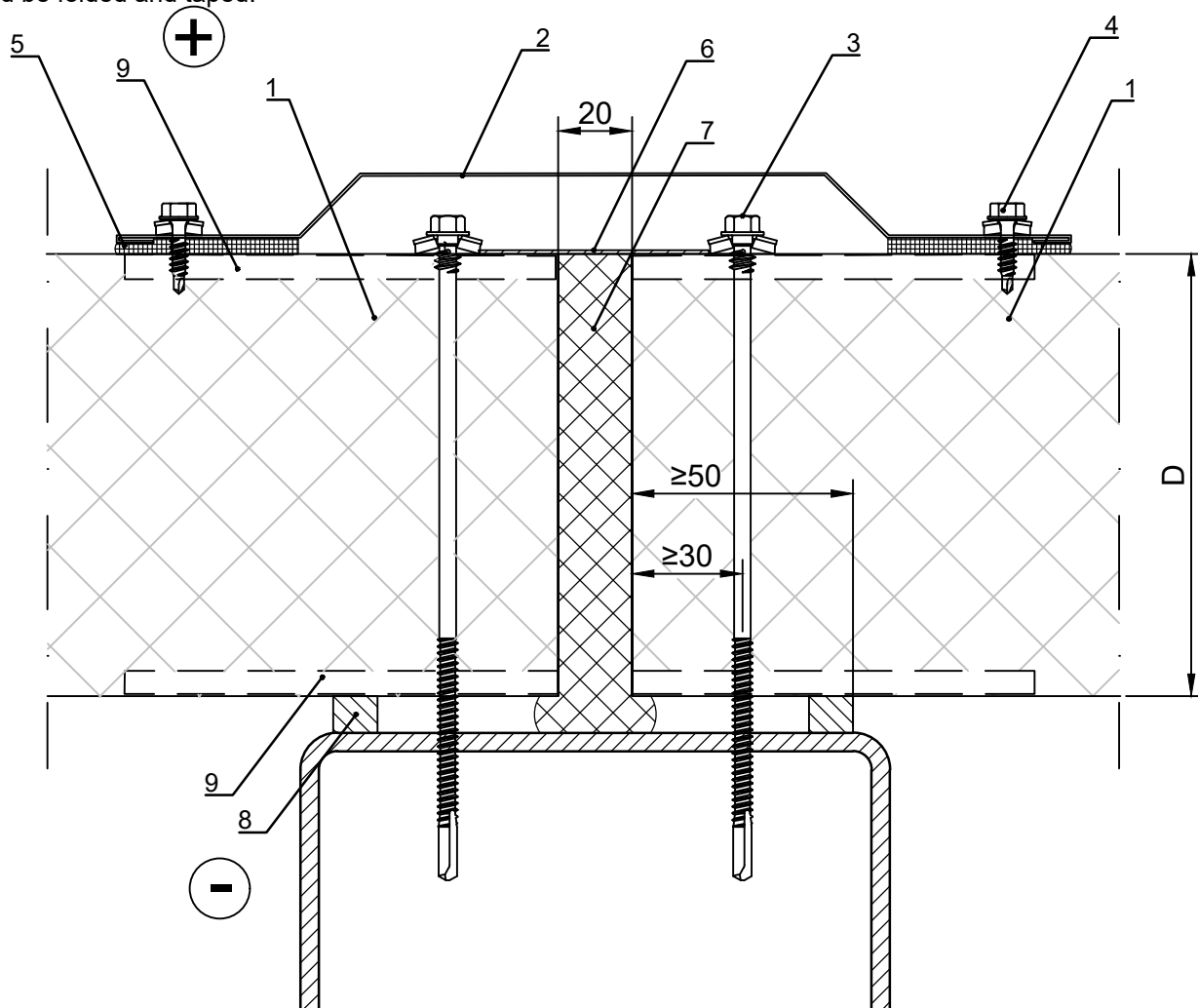
Contents of drawing

Ruukki SP2E PIR wall panels,
Horizontal installation
Horizontal section

Date 15.04.2021	Rev. date	Work nr.	Drawing nr. SP2E-COLD-02-EN
Drawn by Ruukki	Rev.		
Scale 1:2	Building		File nr.

Elastic butyl sealing compound in
flashing overlaps. Ends of flashing
should be folded and taped.

For temperature range between
 $-50^{\circ}\text{C} < t < 0^{\circ}\text{C}$



- ☐ 1. Ruukki SP2E PIR panel
- ☐ 2. Vertical joint flashing
- ☐ 3. Self-drilling element screw, washer with sealing
- ☐ 4. Flashing fastener, washer with sealing
- ☐ 5. Elastic butyl sealing compound
- ☐ 6. Joint sealing Nordic
- ☐ 7. Elastic PU-foam
- ☐ 8. Sealing strip (/EA3SS1210/ or 20x30 Impregnated sealant)
- ☐ 9. Elastic sealant in the groove joint (suitable for frost)

☒ Ruukki's delivery

Copyright © Ruukki Construction Oy. Allowed only for designs with Ruukki's products.



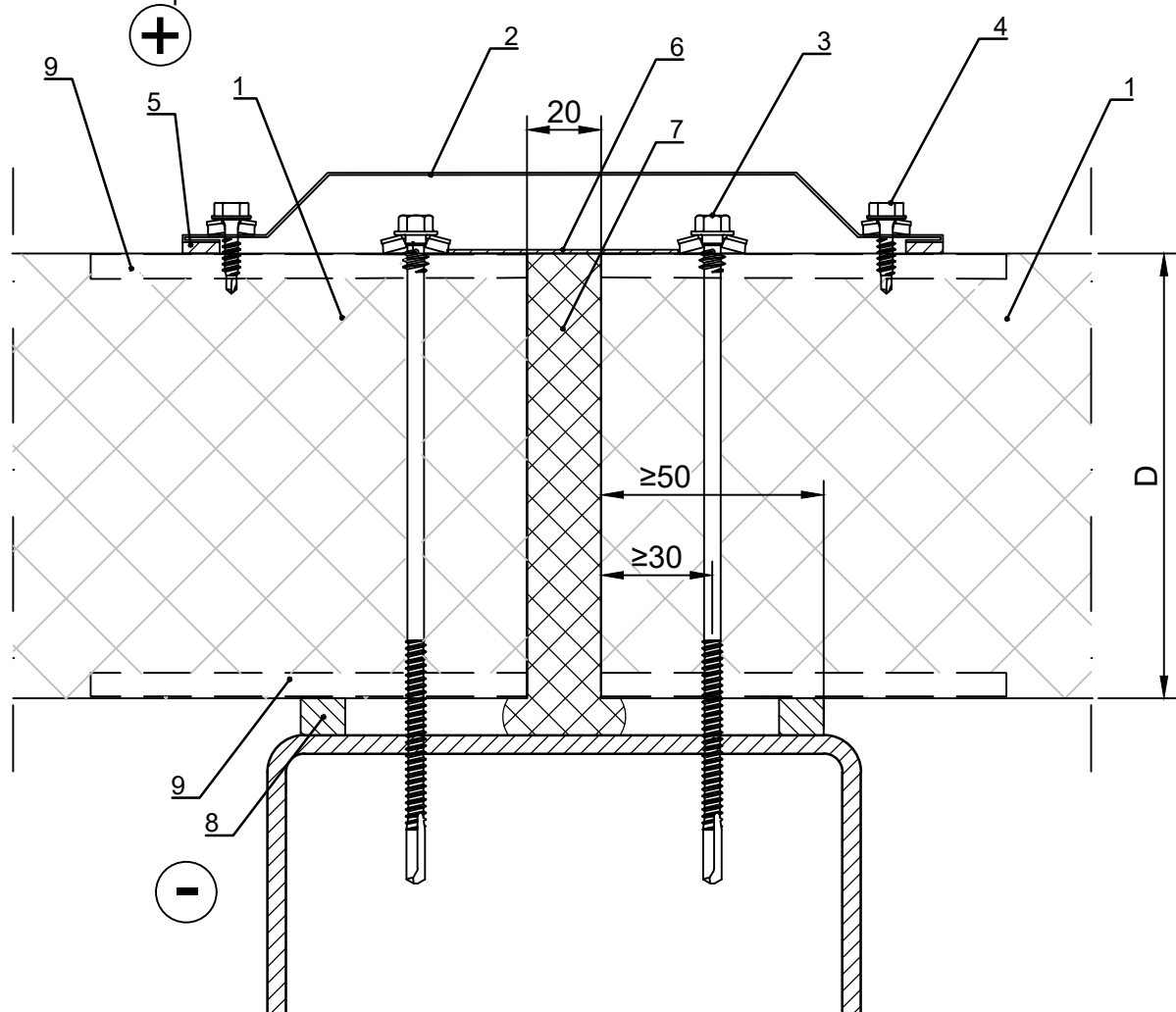
Contents of drawing

Ruukki SP2E PIR wall panels,
Horizontal installation
Horizontal section

Date 15.04.2021	Rev. date	Work nr.	Drawing nr. SP2E-COLD-03-EN
Drawn by Ruukki	Rev.		
Scale 1:2	Building		File nr.

Elastic butyl sealing compound in
flashing overlaps. Ends of flashing
should be folded and taped.

For temperature range between
 $0^{\circ}\text{C} < t < +15^{\circ}\text{C}$



- ☐ 1. Ruukki SP2E PIR panel
- ☐ 2. Vertical joint flashing (/EA1JV1/ or /EA1B16/)
- ☐ 3. Self-drilling element screw, washer with sealing
- ☐ 4. Flashing fastener, washer with sealing
- ☐ 5. Sealing strip (/EA3SS410/ or 4x20 Impregnated sealant)
- ☐ 6. Joint sealing Nordic
- ☐ 7. Elastic PU-foam
- ☐ 8. Sealing strip (/EA3SS1210/ or 20x30 Impregnated sealant)
- ☐ 9. Elastic sealant in the groove joint

☒ Ruukki's delivery

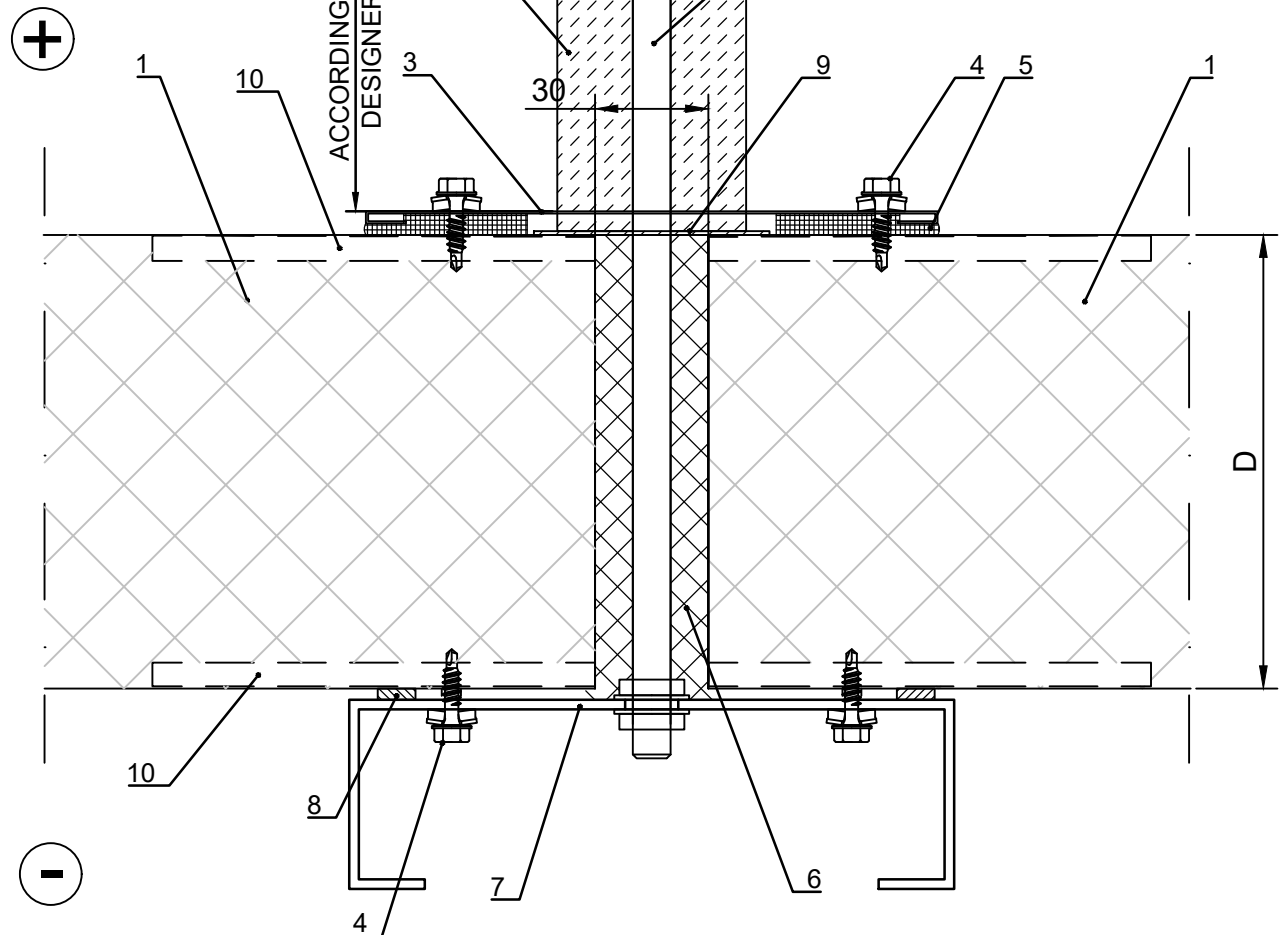
Copyright © Ruukki Construction Oy. Allowed only for designs with Ruukki's products.

Ruukki SP2E PIR ceiling panels,
Joint between panels
Vertical section

Date 15.04.2021	Rev. date	Work nr.	Drawing nr. SP2E-COLD-04-EN
Drawn by Ruukki	Rev.		
Scale 1:2	Building		File nr.

Elastic butyl sealing compound in flashing overlaps. Ends of flashing should be folded and taped.

For temperature range between
 $-50^{\circ}\text{C} < t < 0^{\circ}\text{C}$



Note! Sealing compound has to be used in the end and joint spots of the purlin

- ☐ 1. Ruukki SP2E PIR panel
- ☐ 2. Threaded rod, stainless steel
- ☐ 3. Cover flashing, according to project
- ☐ 4. Flashing fastener, washer with sealing
- ☐ 5. Elastic butyl sealing compound
- ☐ 6. Elastic PU-foam
- ☐ 7. C-purlin
- ☐ 8. Sealing strip (/EA3SS410/ or 4x20 Impregnated sealant)
- ☐ 9. Joint sealing Nordic
- ☐ 10. Elastic sealant in the groove joint (suitable for frost)
- ☐ 11. Closed-cell insulation material acc. to structural designer

☒ Ruukki's delivery



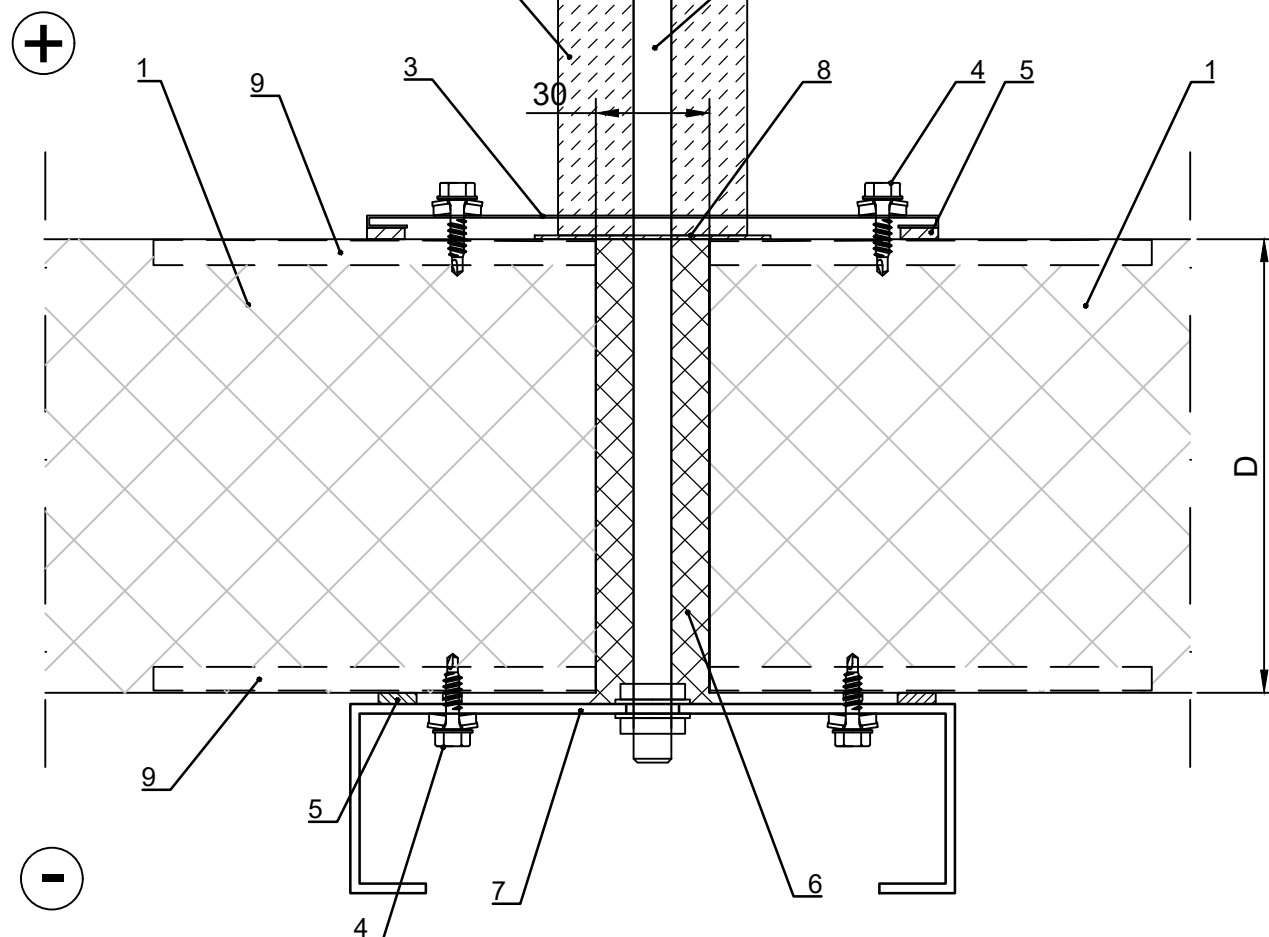
Contents of drawing

Ruukki SP2E PIR ceiling panels,
Joint between panels
Vertical section

Date 15.04.2021	Rev. date	Work nr.	Drawing nr. SP2E-COLD-05-EN
Drawn by Ruukki	Rev.		
Scale 1:2	Building		File nr.

Elastic butyl sealing compound in
flashing overlaps. Ends of flashing
should be folded and taped.

For temperature range between
 $0^{\circ}\text{C} < t < +15^{\circ}\text{C}$



Note! Sealing compound has to
be used in the end and joint
spots of the purlin

- ☐ 1. Ruukki SP2E PIR panel
- ☐ 2. Threaded rod, stainless steel
- ☐ 3. Cover flashing, according to project
- ☐ 4. Flashing fastener, washer with sealing
- ☐ 5. Sealing strip (/EA3SS410/ or 4x20 Impregnated sealant)
- ☐ 6. Elastic PU-foam
- ☐ 7. C-purlin
- ☐ 8. Joint sealing Nordic
- ☐ 9. Elastic sealant in the groove joint
- ☐ 10. Closed-cell insulation material acc. to structural designer (optional)

☒ Ruukki's delivery

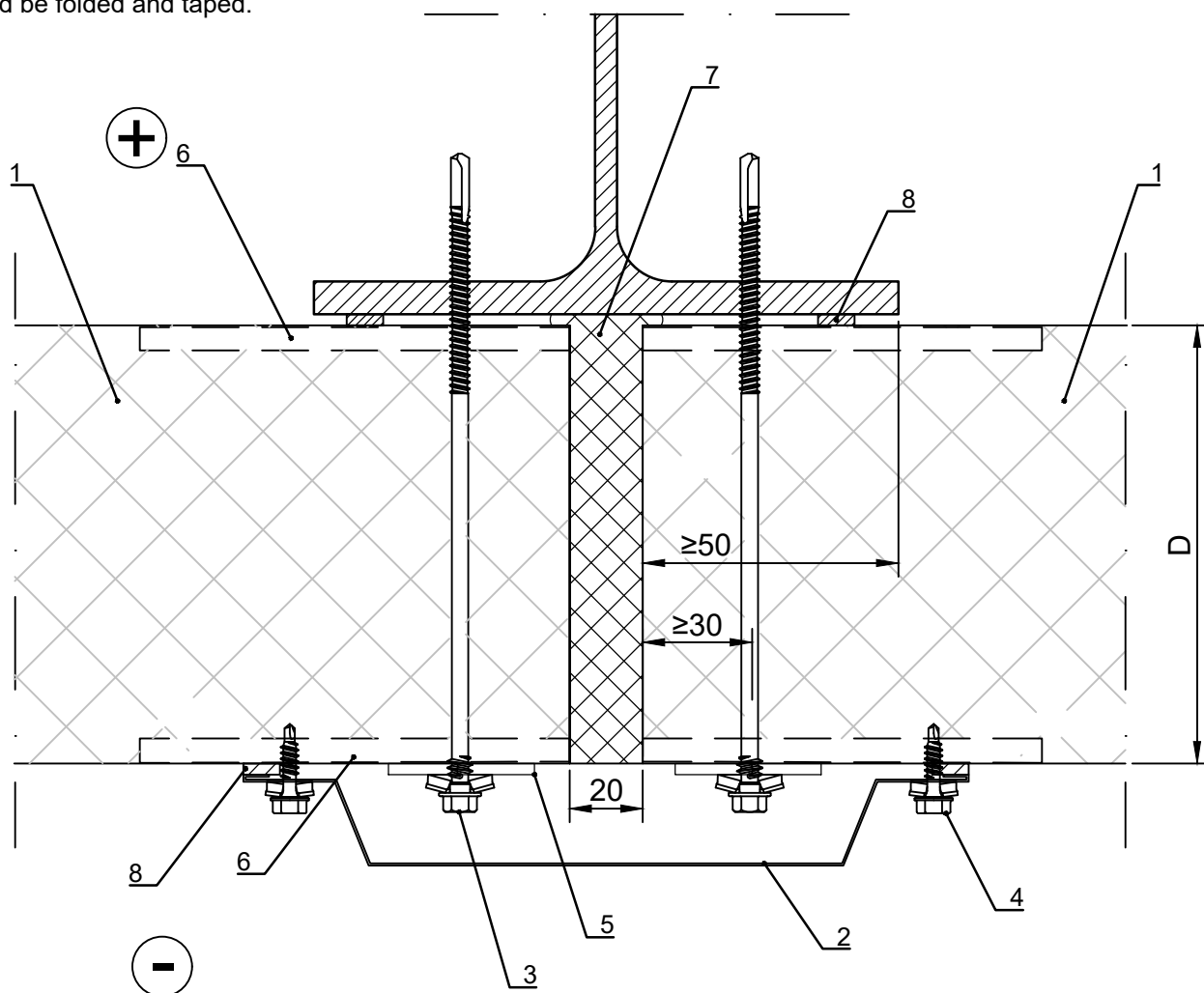
Copyright © Ruukki Construction Oy. Allowed only for designs with Ruukki's products.

Ruukki SP2E PIR ceiling panels,
Joint between panels
Vertical section

Date 15.04.2021	Rev. date	Work nr.	Drawing nr. SP2E-COLD-06-EN
Drawn by Ruukki	Rev.		
Scale 1:2	Building		File nr.

Elastic butyl sealing compound in flashing overlaps. Ends of flashing should be folded and taped.

For temperature range between
 $0^{\circ}\text{C} < t < +15^{\circ}\text{C}$



- ☐ 1. Ruukki SP2E PIR panel
- ☐ 2. Vertical joint flashing (/EA1JV1/ or /EA1B16/)
- ☐ 3. Self-drilling element screw, washer with sealing
- ☐ 4. Flashing fastener, washer with sealing
- ☐ 5. Support plate Ø 40mm, t=3mm, stainless steel
- ☐ 6. Elastic sealant in the groove joint (suitable for frost)
- ☐ 7. Elastic PU-foam
- ☐ 8. Sealing strip (/EA3SS410/ or 4x20 Impregnated sealant)

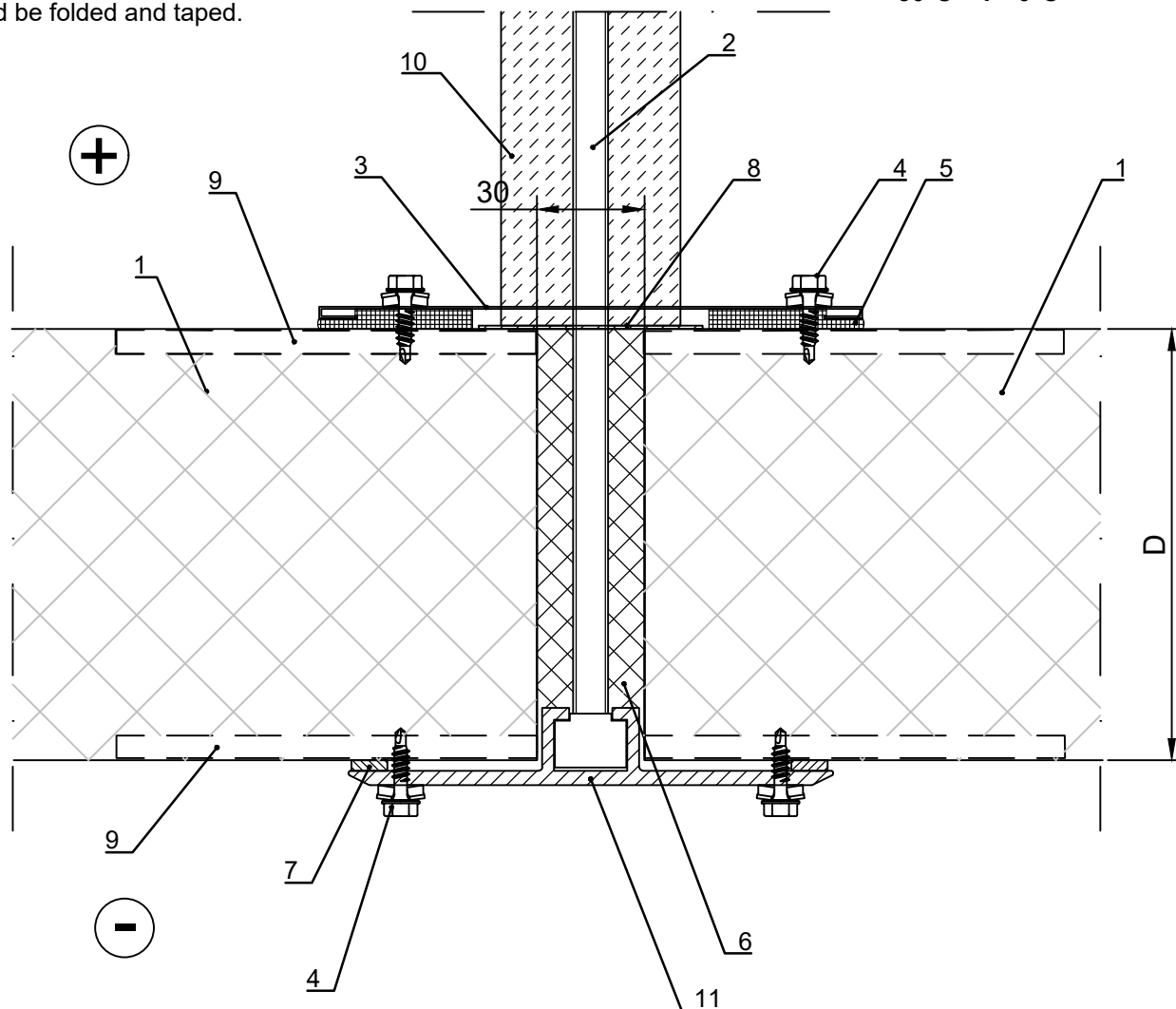
☒ Ruukki's delivery

Ruukki SP2E PIR ceiling panels,
Joint between panels
Vertical section

Date 15.04.2021	Rev. date	Work nr.	Drawing nr. SP2E-COLD-07-EN
Drawn by Ruukki	Rev.		
Scale 1:2	Building		File nr.

Elastic butyl sealing compound in flashing overlaps. Ends of flashing should be folded and taped.

For temperature range between
 $-50^{\circ}\text{C} < t < 0^{\circ}\text{C}$



- ☐ 1. Ruukki SP2E PIR panel
- ☐ 2. Threaded rod, acid-proof
- ☐ 3. Cover flashing, according to project
- ☐ 4. Flashing fastener, washer with sealing
- ☐ 5. Elastic butyl sealing compound
- ☐ 6. Elastic PU-foam
- ☐ 7. Sealing strip (/EA3SS410/ or 4x20 Impregnated sealant)
- ☐ 8. Joint sealing Nordic
- ☐ 9. Elastic sealant in the groove joint (suitable for frost)
- ☐ 10. Closed-cell insulation material acc. to structural designer (optional)
- ☐ 11. Painted aluminum profile

☒ Ruukki's delivery



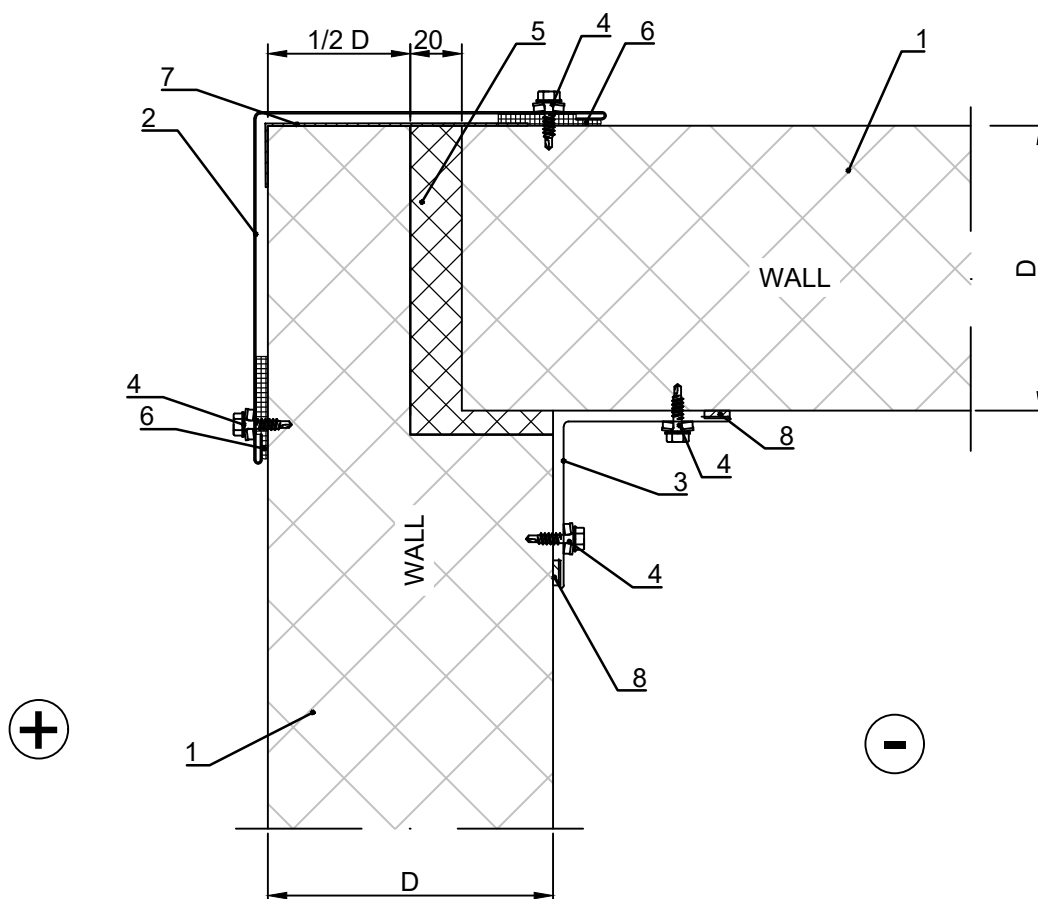
Contents of drawing

Ruukki SP2E PIR, corner joint
Joint between vertically installed wall panels
Horizontal section

Date 15.04.2021	Rev. date	Work nr.	Drawing nr. SP2E-COLD-08-EN
Drawn by Ruukki	Rev.		
Scale 1:3	Building		File nr.

Elastic butyl sealing compound in flashing overlaps. Ends of flashing should be folded and taped.

For temperature range between
 $-50^{\circ}\text{C} < t < 0^{\circ}\text{C}$



- ☐ 1. Ruukki SP2E PIR panel
- ☐ 2. Corner flashing(/EA1B03/)
- ☐ 3. Corner flashing(/EA1B05/)
- ☐ 4. Flashing fastener, washer with sealing
- ☐ 5. Elastic PU-foam
- ☐ 6. Elastic butyl sealing compound
- ☐ 7. Joint sealing corner Nordic
- ☐ 8. Sealing strip (/EA3SS410/ or 4x20 Impregnated sealant)

☒ Ruukki's delivery

Copyright © Ruukki Construction Oy. Allowed only for designs with Ruukki's products.



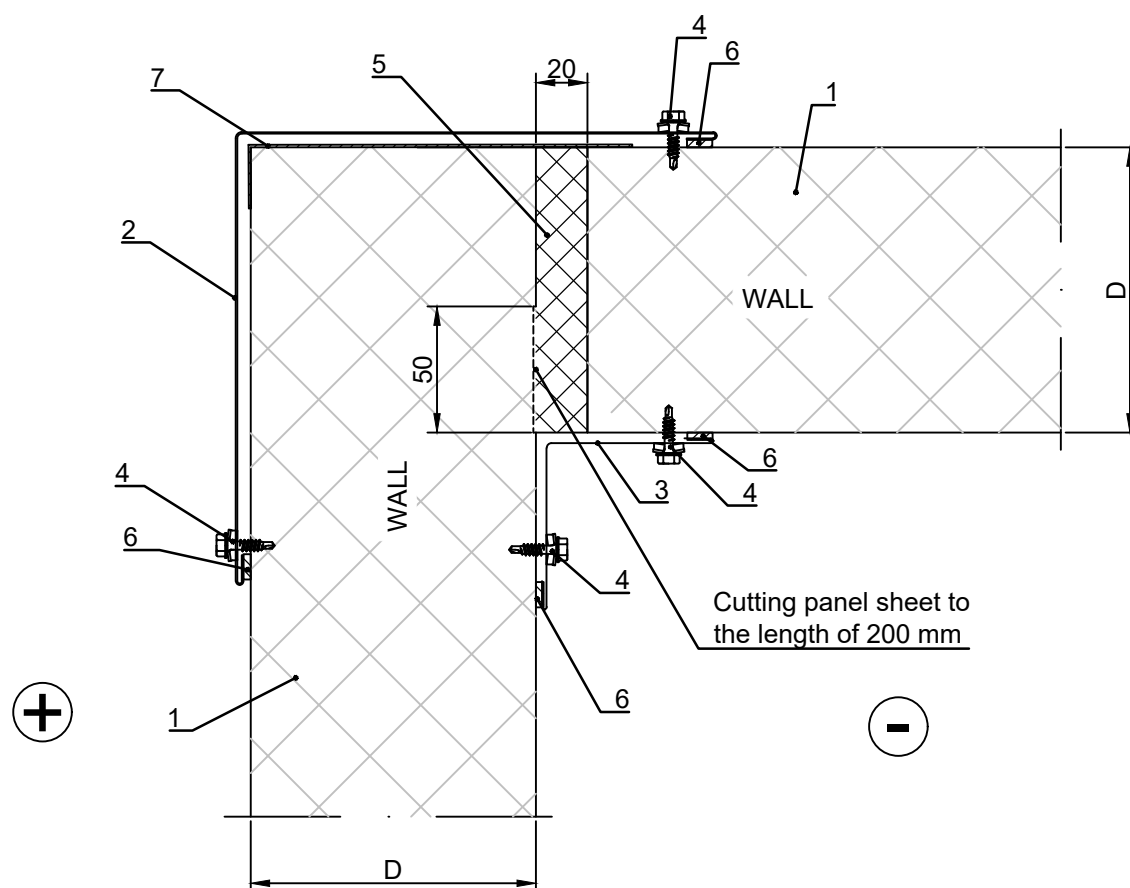
Contents of drawing

Ruukki SP2E PIR, corner joint
Joint between vertically installed wall panels
Horizontal section

Date 15.04.2021	Rev. date	Work nr.	Drawing nr. SP2E-COLD-09-EN
Drawn by Ruukki	Rev.		
Scale 1:3	Building		File nr.

Elastic butyl sealing compound in flashing overlaps. Ends of flashing should be folded and taped.

For temperature range between
 $0^{\circ}\text{C} < t < +15^{\circ}\text{C}$



- ☐ 1. Ruukki SP2E PIR panel
- ☐ 2. Corner flashing(/EA1B03/)
- ☐ 3. Corner flashing(/EA1B05/)
- ☐ 4. Flashing fastener, washer with sealing
- ☐ 5. Elastic PU-foam
- ☐ 6. Sealing strip (/EA3SS410/ or 4x20 Impregnated sealant)
- ☐ 7. Joint sealing corner Nordic

☒ Ruukki's delivery

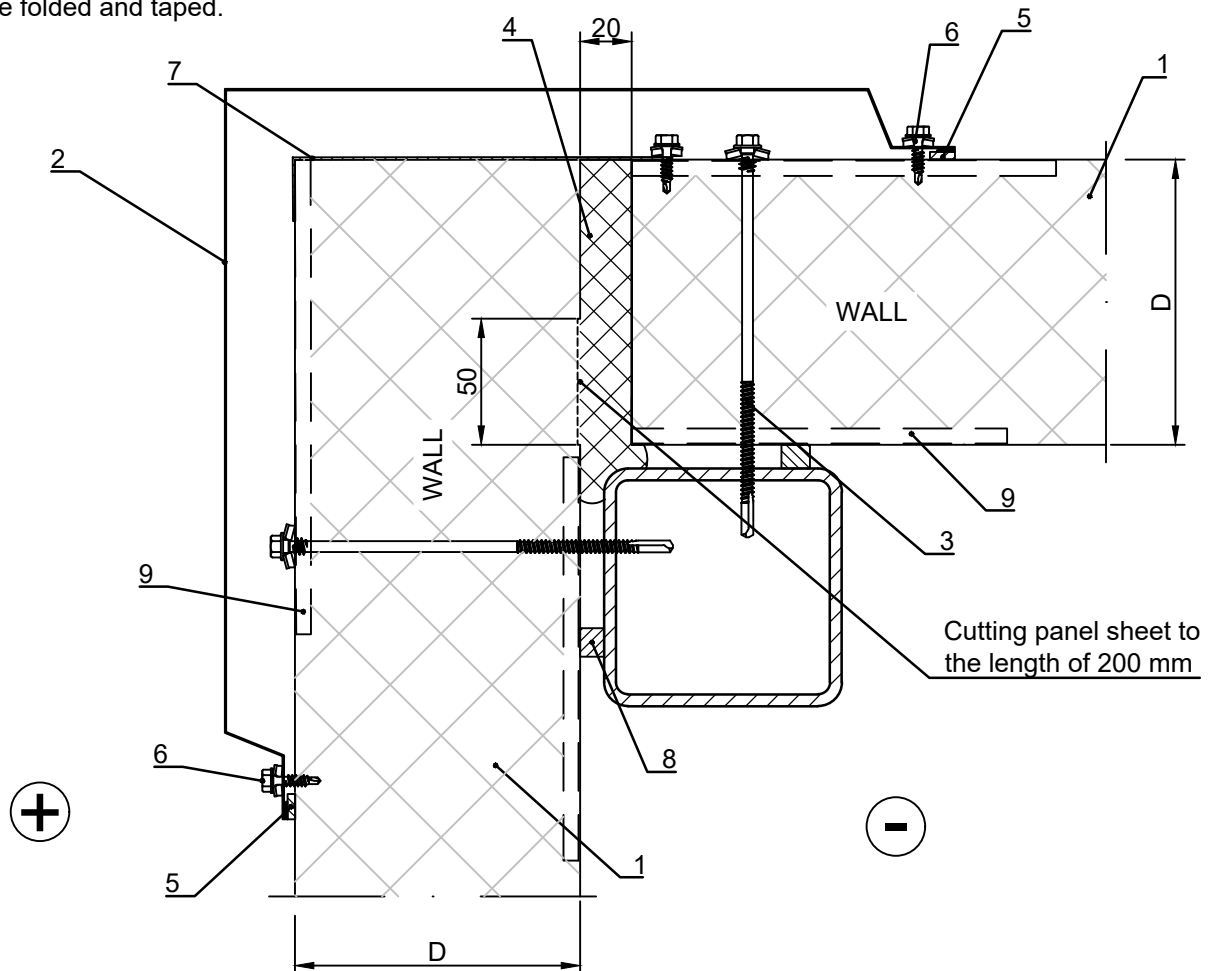
Copyright © Ruukki Construction Oy. Allowed only for designs with Ruukki's products.

Ruukki SP2E PIR, corner joint
Joint between horizontally installed wall panels
Horizontal section

Date 15.04.2021	Rev. date	Work nr.	Drawing nr. SP2E-COLD-10-EN
Drawn by Ruukki	Rev.		
Scale 1:3	Building		File nr.

Elastic butyl sealing compound in flashing overlaps. Ends of flashing should be folded and taped.

For temperature range between
 $0^{\circ}\text{C} < t < +15^{\circ}\text{C}$



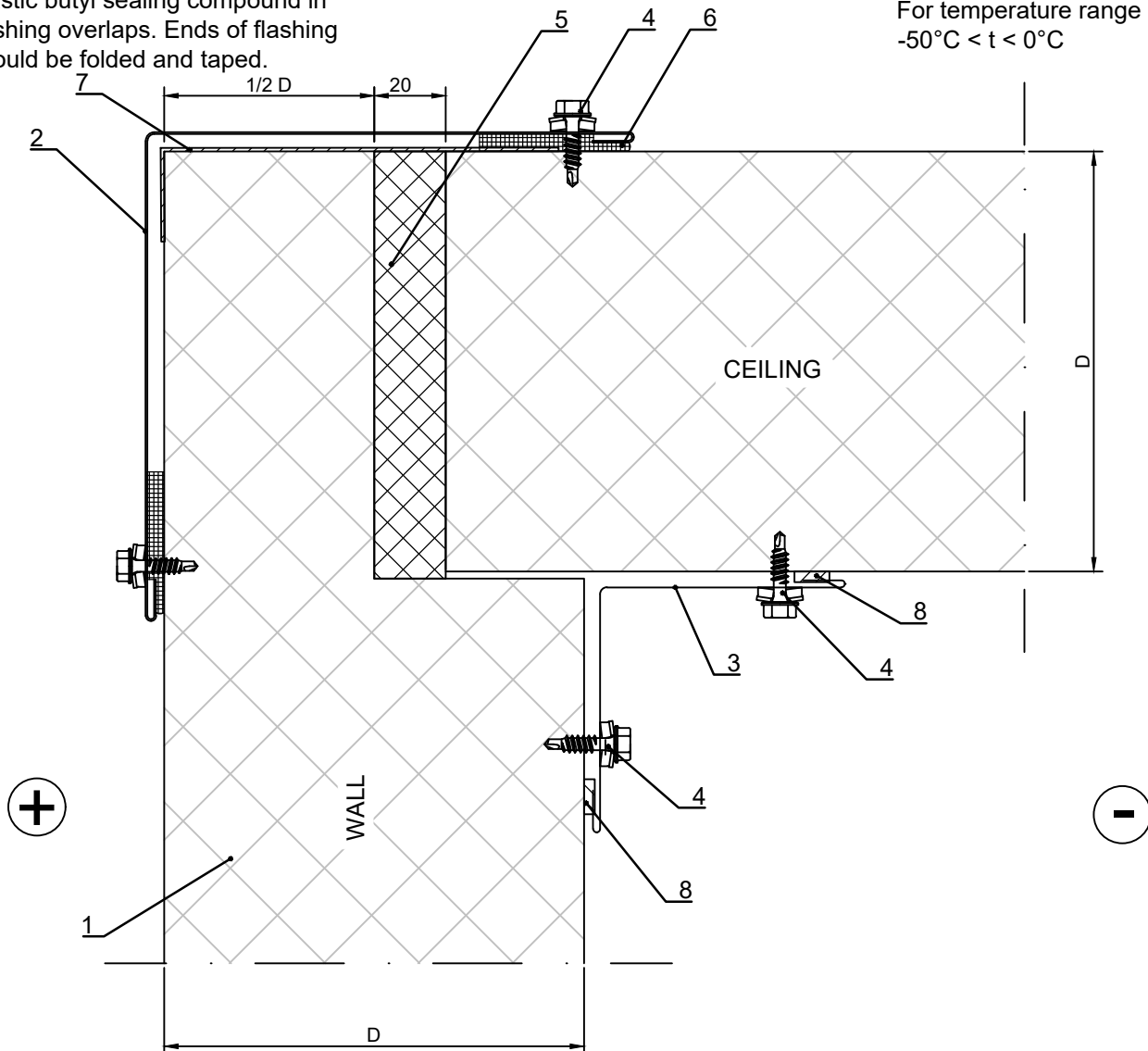
- ☐ 1. Ruukki SP2E PIR panel
- ☐ 2. Corner flashing
- ☐ 3. Self-drilling element screw, washer with sealing
- ☐ 4. Elastic PU-foam
- ☐ 5. Sealing strip (/EA3SS410/ or 4x20 Impregnated sealant)
- ☐ 6. Flashing fastener, washer with sealing
- ☐ 7. Joint sealing corner Nordic
- ☐ 8. Sealing strip (/EA3SS1210/ or 20x30 Impregnated sealant)
- ☐ 9. Elastic sealant in the groove joint

☒ Ruukki's delivery

Date 15.04.2021	Rev. date	Work nr.	Drawing nr. SP2E-COLD-11-EN
Drawn by Ruukki	Rev.		
Scale 1:2	Building		File nr.

Elastic butyl sealing compound in flashing overlaps. Ends of flashing should be folded and taped.

For temperature range between
 $-50^{\circ}\text{C} < t < 0^{\circ}\text{C}$



- ☐ 1. Ruukki SP2E PIR panel
- ☐ 2. Corner flashing(/EA1B03/)
- ☐ 3. Corner flashing(/EA1B05/)
- ☐ 4. Flashing fastener, washer with sealing
- ☐ 5. Elastic PU-foam
- ☐ 6. Elastic butyl sealing compound
- ☐ 7. Joint sealing corner Nordic
- ☐ 8. Sealing strip (/EA3SS410/ or 4x20 Impregnated sealant)

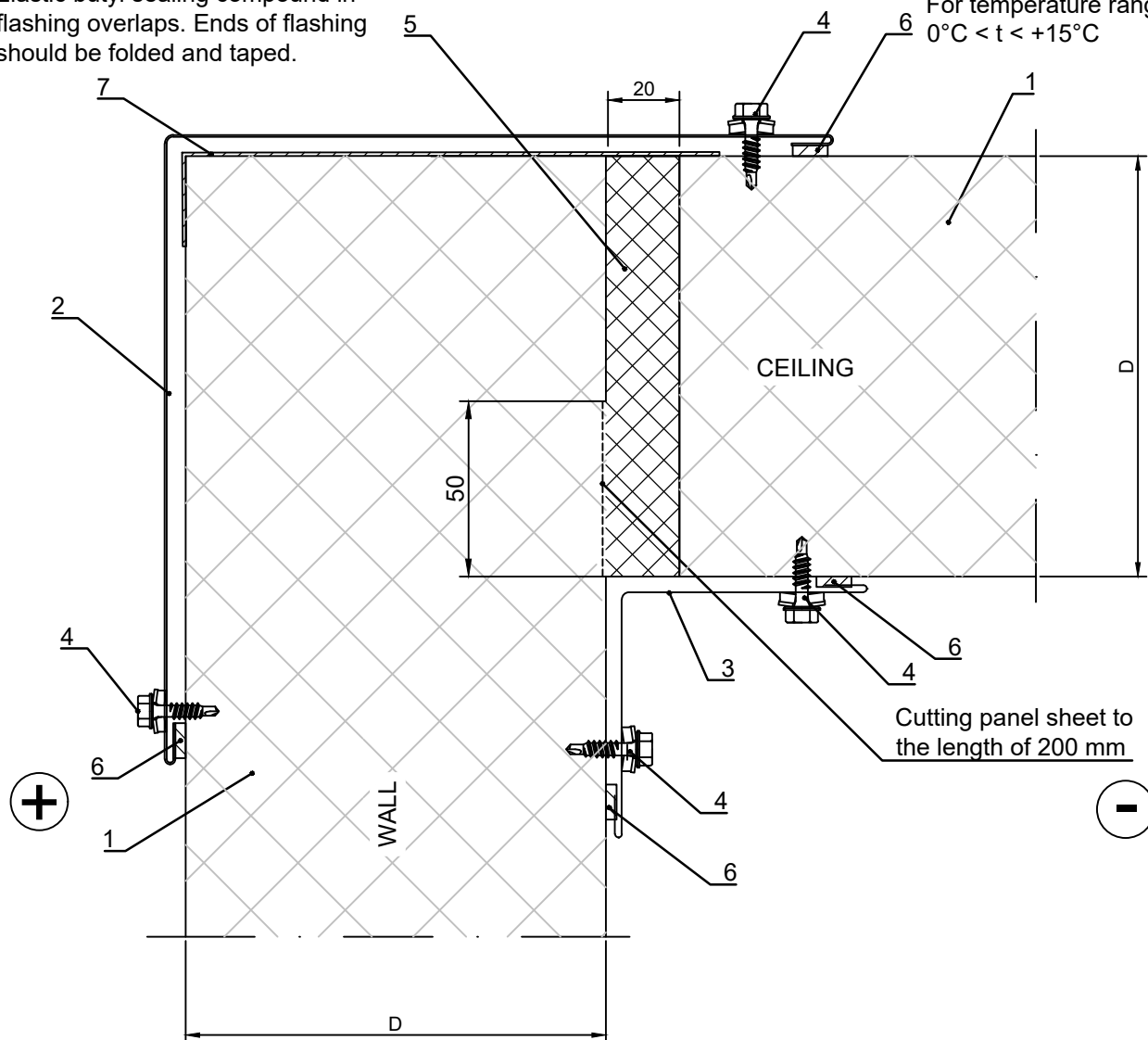
☒ Ruukki's delivery

Ruukki SP2E PIR, corner joint,
horizontally installed wall and ceiling panel
Vertical section

Date 15.04.2021	Rev. date	Work nr.	Drawing nr. SP2E-COLD-12-EN
Drawn by Ruukki	Rev.		
Scale 1:2	Building		File nr.

Elastic butyl sealing compound in flashing overlaps. Ends of flashing should be folded and taped.

For temperature range between
 $0^{\circ}\text{C} < t < +15^{\circ}\text{C}$



- ☐ 1. Ruukki SP2E PIR panel
- ☐ 2. Corner flashing(/EA1B03/)
- ☐ 3. Corner flashing(/EA1B05/)
- ☐ 4. Flashing fastener, washer with sealing
- ☐ 5. Elastic PU-foam
- ☐ 6. Sealing strip (/EA3SS410/ or 4x20 Impregnated sealant)
- ☐ 7. Joint sealing corner Nordic

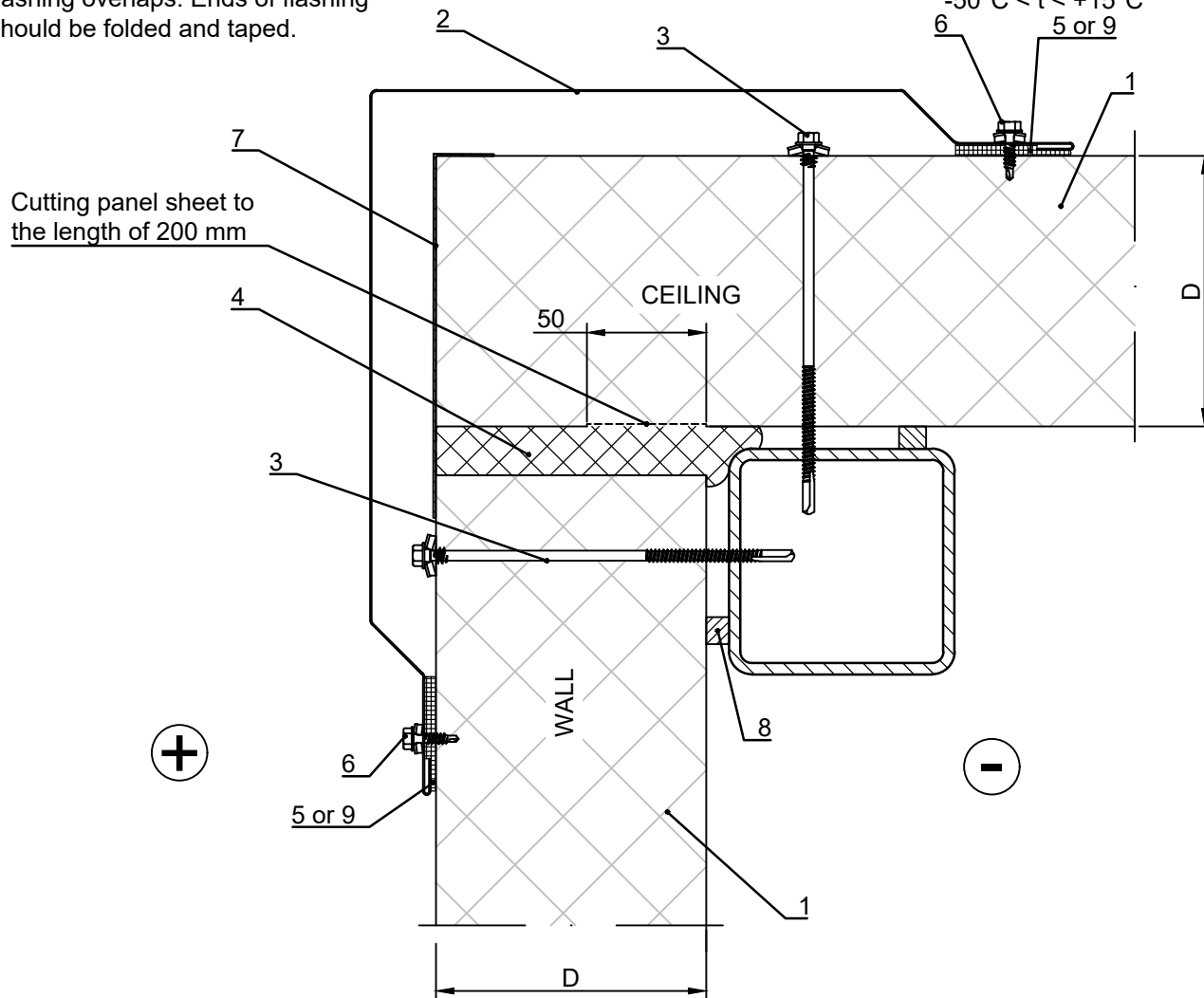
☒ Ruukki's delivery

Ruukki SP2E PIR, corner joint,
vertically installed wall and ceiling panel
Vertical section

Date 15.04.2021	Rev. date	Work nr.	Drawing nr. SP2E-COLD-13-EN
Drawn by Ruukki	Rev.		
Scale 1:3	Building		File nr.

Elastic butyl sealing compound in flashing overlaps. Ends of flashing should be folded and taped.

For temperature range between
 $-50^{\circ}\text{C} < t < +15^{\circ}\text{C}$



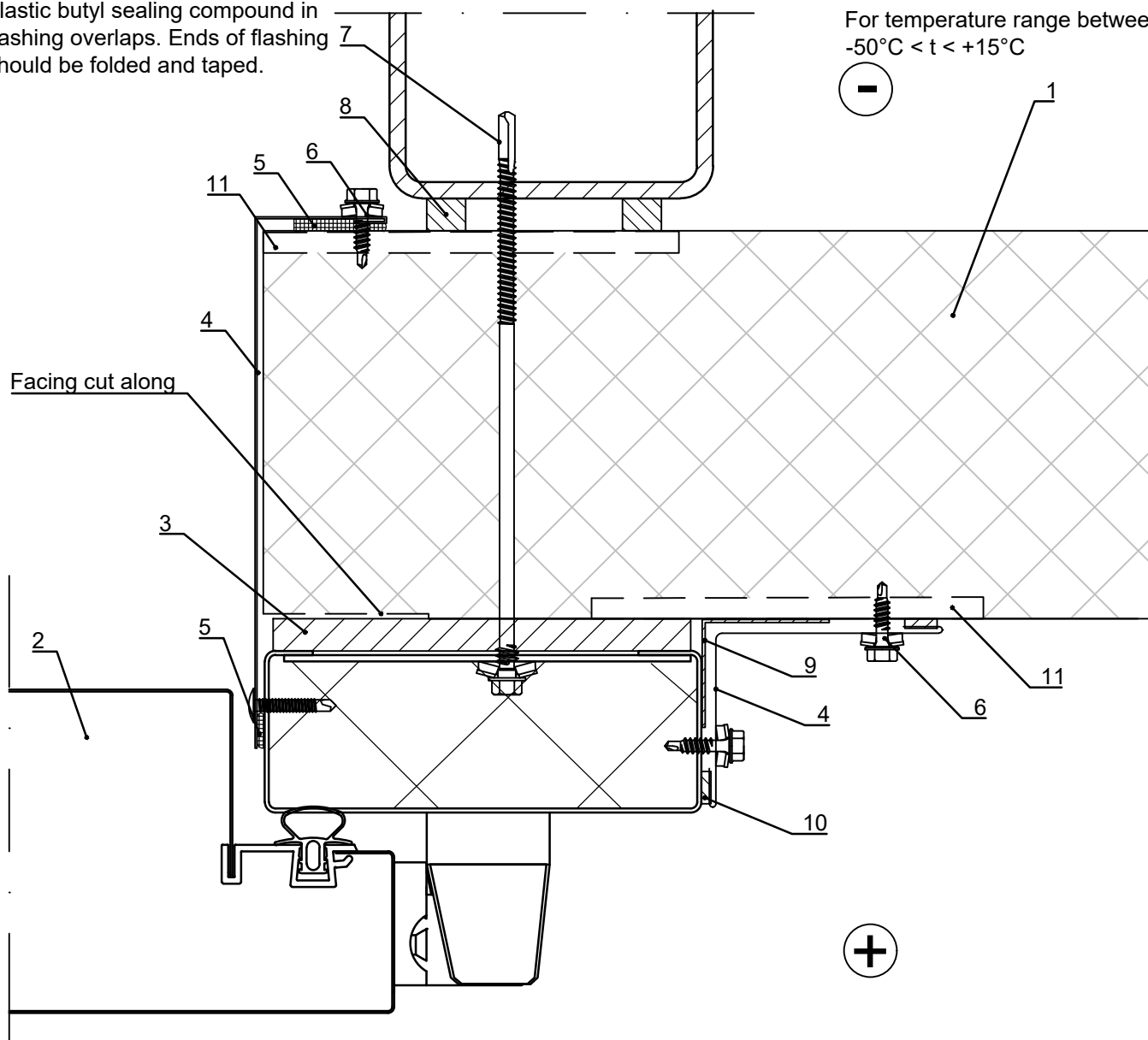
- ☐ 1. Ruukki SP2E PIR panel
- ☐ 2. Corner flashing
- ☐ 3. Self-drilling element screw, washer with sealing
- ☐ 4. Elastic PU-foam
- ☐ 5. Elastic butyl sealing compound (in cold storages)
- ☐ 6. Flashing fastener, washer with sealing
- ☐ 7. Joint sealing corner Nordic
- ☐ 8. Sealing strip (/EA3SS1210/ or 20x30 Impregnated sealant)
- ☐ 9. Sealing strip (/EA3SS410/ or 4x20 Impregnated sealant) (in chilled and refrigerated storages)

☒ Ruukki's delivery

Date 15.04.2021	Rev. date	Work nr.	Drawing nr. SP2E-COLD-14-EN
Drawn by Ruukki	Rev.		
Scale 1:2	Building	File nr.	

Elastic butyl sealing compound in flashing overlaps. Ends of flashing should be folded and taped.

For temperature range between
 $-50^{\circ}\text{C} < t < +15^{\circ}\text{C}$



- ☐ 1. Ruukki SP2E PIR panel
- ☐ 2. Cold store door
- ☐ 3. cellular rubber sealant
- ☐ 4. Corner flashing
- ☐ 5. Elastic butyl sealing compound
- ☐ 6. Flashing fastener, washer with sealing
- ☐ 7. Self-drilling element screw, washer with sealing
- ☐ 8. Sealing strip (/EA3SS1210/ or 20x30 Impregnated sealant)
- ☐ 9. Joint sealing Nordic
- ☐ 10. Sealing strip (/EA3SS410/ or 4x20 Impregnated sealant)
- ☐ 11. Elastic sealant in the groove joint if the panel is horizontally installed

☒ Ruukki's delivery



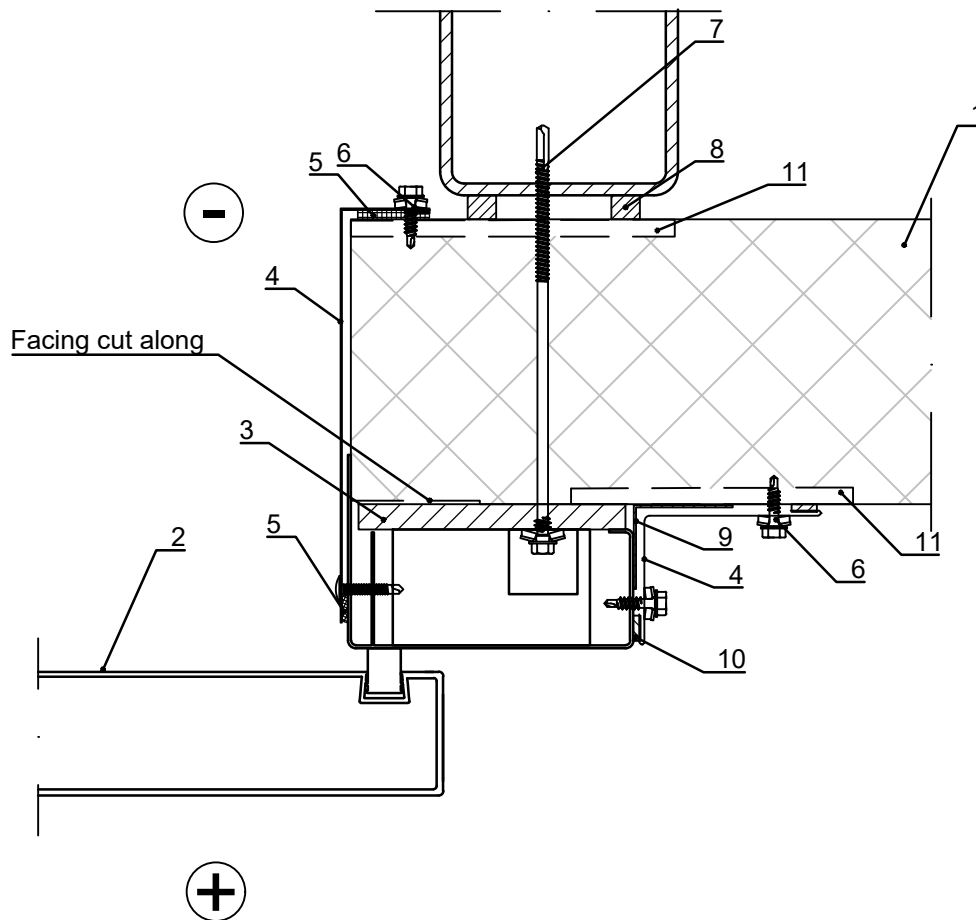
Contents of drawing

Ruukki SP2E PIR, horizontal or vertical inst.
Cold store sliding door - example
Horizontal section

Date 15.04.2021	Rev. date	Work nr.	Drawing nr. SP2E-COLD-15-EN
Drawn by Ruukki	Rev.		
Scale 1:3	Building		File nr.

Elastic butyl sealing compound in flashing overlaps. Ends of flashing should be folded and taped.

For temperature range between
 $-50^{\circ}\text{C} < t < +15^{\circ}\text{C}$



- ☐ 1. Ruukki SP2E PIR panel
- ☐ 2. Cold store sliding door
- ☐ 3. Cellular rubber sealant
- ☐ 4. Corner flashing
- ☐ 5. Elastic butyl sealing compound
- ☐ 6. Flashing fastener, washer with sealing
- ☐ 7. Self-drilling element screw, washer with sealing
- ☐ 8. Sealing strip (/EA3SS1210/ or 20x30 Impregnated sealant)
- ☐ 9. Joint sealing Nordic
- ☐ 10. Sealing strip (/EA3SS410/ or 4x20 Impregnated sealant)
- ☐ 11. Elastic sealant in the groove joint if the panel is horizontally installed

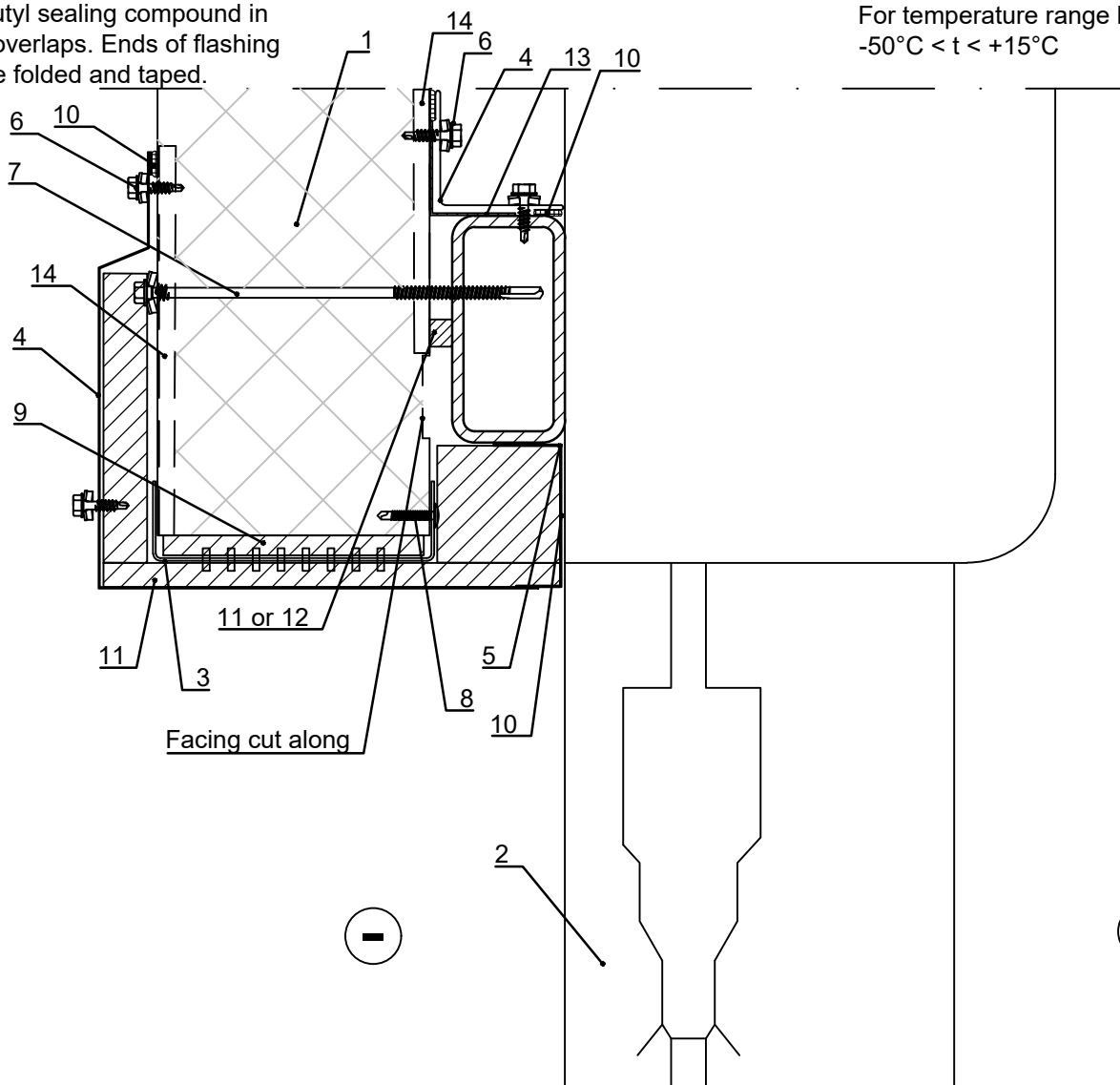
☒ Ruukki's delivery

Copyright © Ruukki Construction Oy. Allowed only for designs with Ruukki's products.

Date 15.04.2021	Rev. date	Work nr.	Drawing nr. SP2E-COLD-16-EN
Drawn by Ruukki	Rev.		
Scale 1:3	Building		File nr.

Elastic butyl sealing compound in flashing overlaps. Ends of flashing should be folded and taped.

For temperature range between
 $-50^{\circ}\text{C} < t < +15^{\circ}\text{C}$



- ☐ 1. Ruukki SP2E PIR panel
- ☐ 2. Cold store overhead door
- ☐ 3. /EA1W___/ Window purlin
- ☐ 4. Corner flashing
- ☐ 5. Flasing
- ☐ 6. Flashing fastener, washer with sealing
- ☐ 7. Self-drilling element screw, washer with sealing
- ☐ 8. Flat head flashing fastener
- ☐ 9. Expandable sealing band
- ☐ 10. Elastic butyl sealing compound
- ☐ 11. Cellular rubber sealant
- ☐ 12. Sealing strip (/EA3SS1210/ or 20x30 Impregnated sealant)
- ☐ 13. Joint sealing Nordic
- ☐ 14. Elastic sealant in the groove joint if the panel is vertically installed

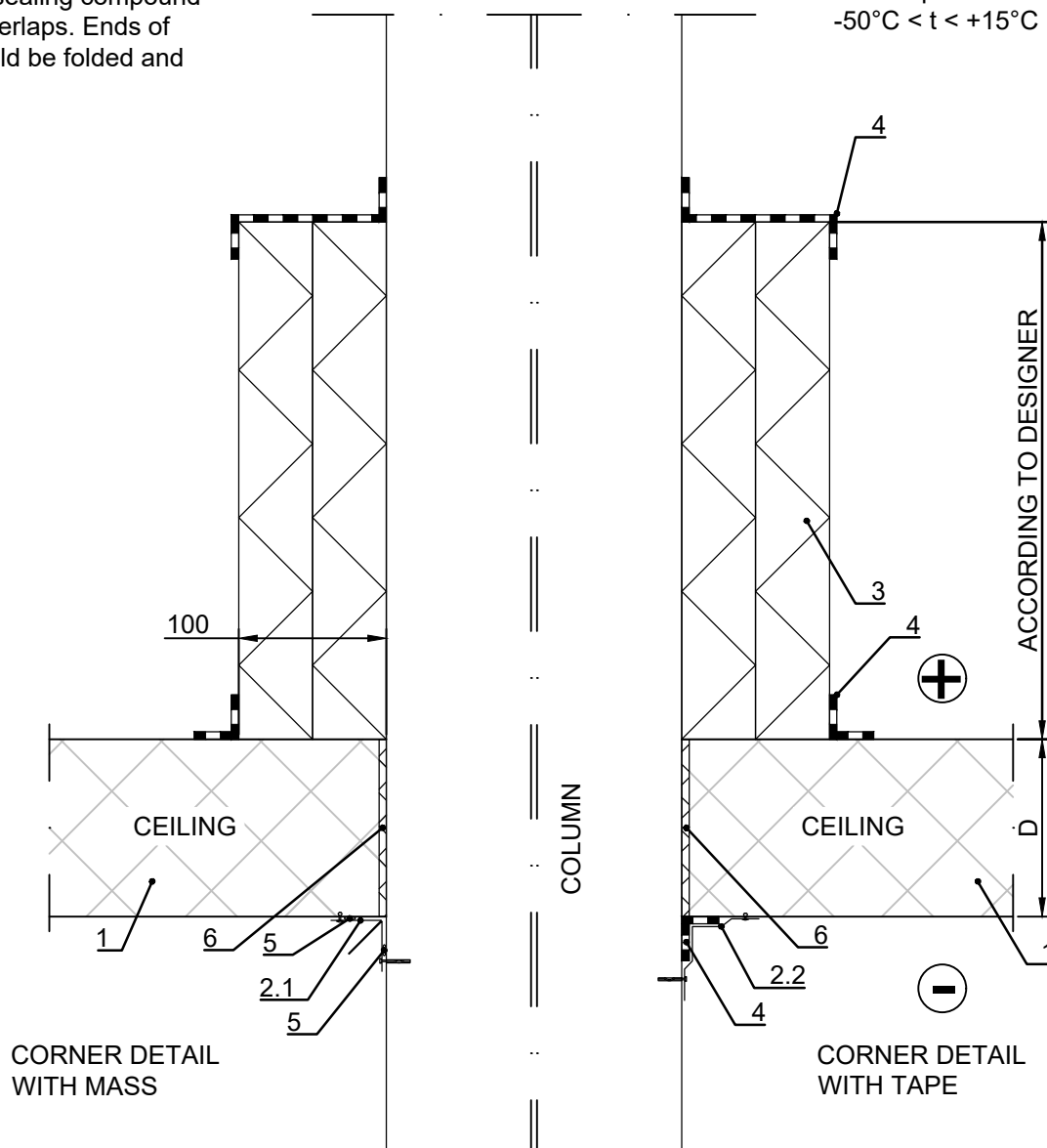
☒ Ruukki's delivery

Ruukki SP2E PIR Compensation insulation on columns with ceiling Vertical section

Date 15.04.2021	Rev. date	Work nr.	Drawing nr. SP2E-COLD-17-EN
Drawn by Ruukki	Rev.		
Scale 1:5	Building		File nr.

Elastic butyl sealing compound in flashing overlaps. Ends of flashing should be folded and taped.

For temperature range between
 $-50^{\circ}\text{C} < t < +15^{\circ}\text{C}$

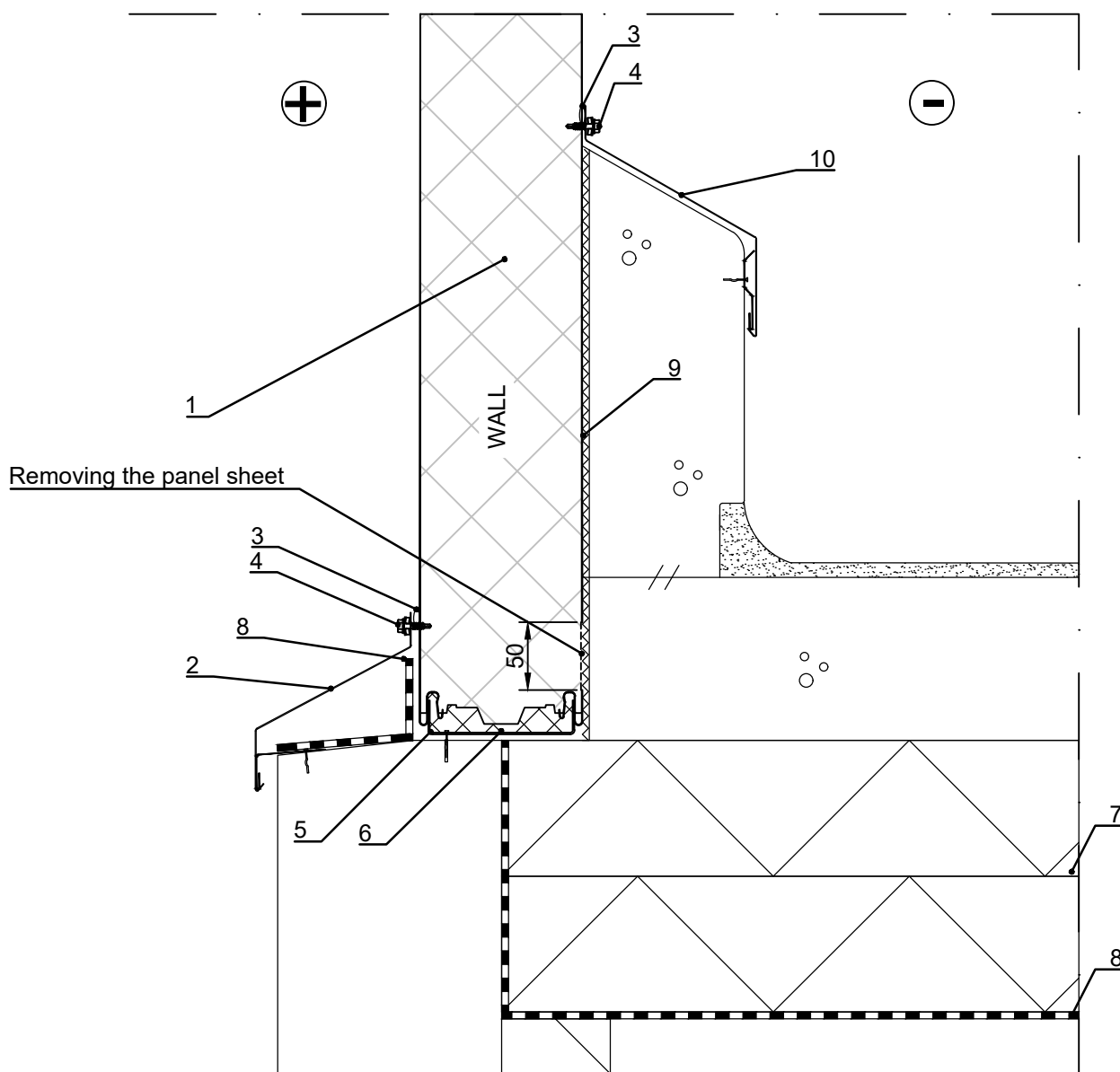


- ☐ 1. Ruukki SP2E PIR panel
- ☐ 2. Corner flashing, fastenig to steel shell with pop-rivets, fastening to concrete with spike fasteners
- ☐ 2.1. Internal corner flashing
- ☐ 2.2. Internal corner flashing
- ☐ 3. Aluminum coated XPS / PIR insulation
- ☐ 4. Aluminum coated butyl tape
- ☐ 5. Permanently elastic butyl sealing compound between flashing and element
- ☐ 6. Expanding PU-foam
- ☐ 7. Joint sealing Nordic

☒ Ruukki's delivery

Date 15.04.2021	Rev. date	Work nr.	Drawing nr. SP2E-COLD-18-EN
Drawn by Ruukki	Rev.		
Scale 1:5	Building		File nr.

For temperature range between
 $0^{\circ}\text{C} < t < +15^{\circ}\text{C}$



- ☐ 1. Ruukki SP2E PIR panel
- ☐ 2. Plinth flashing and Drip wall flashing
- ☐ 3. Permanently elastic sealing compound between flashing and element
- ☐ 4. Flashing fastener, washer with sealing (every ~300 mm)
- ☐ 5. Starter track
- ☐ 6. Expanding PU-foam or expanding sealing tape
- ☐ 7. Floor insulation
- ☐ 8. Vapour barrier, bitum membrane
- ☐ 9. Release strip 10 mm Closed-cell insulatio
- ☐ 10. Plinth flashing and Drip wall flashing

☒ Ruukki's delivery

Copyright © Ruukki Construction Oy. Allowed only for designs with Ruukki's products.



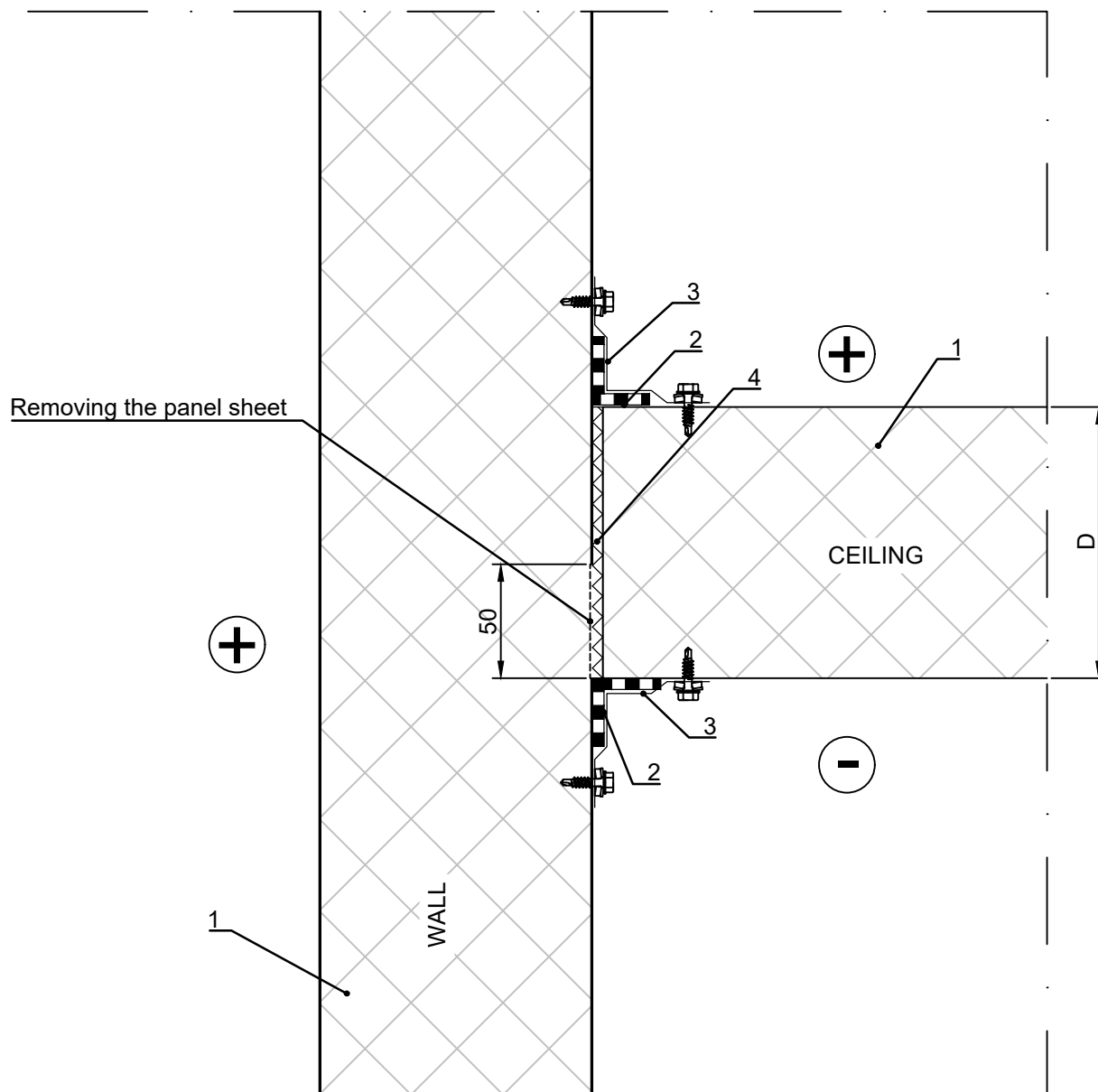
Contents of drawing

Ruukki SP2E PIR

Connection between dropped ceiling
and an outer wall, vertical section

Date 15.04.2021	Rev. date	Work nr.	Drawing nr. SP2E-COLD-19-EN
Drawn by Ruukki	Rev.		
Scale 1:3	Building		File nr.

For temperature range between
 $0^{\circ}\text{C} < t < +15^{\circ}\text{C}$



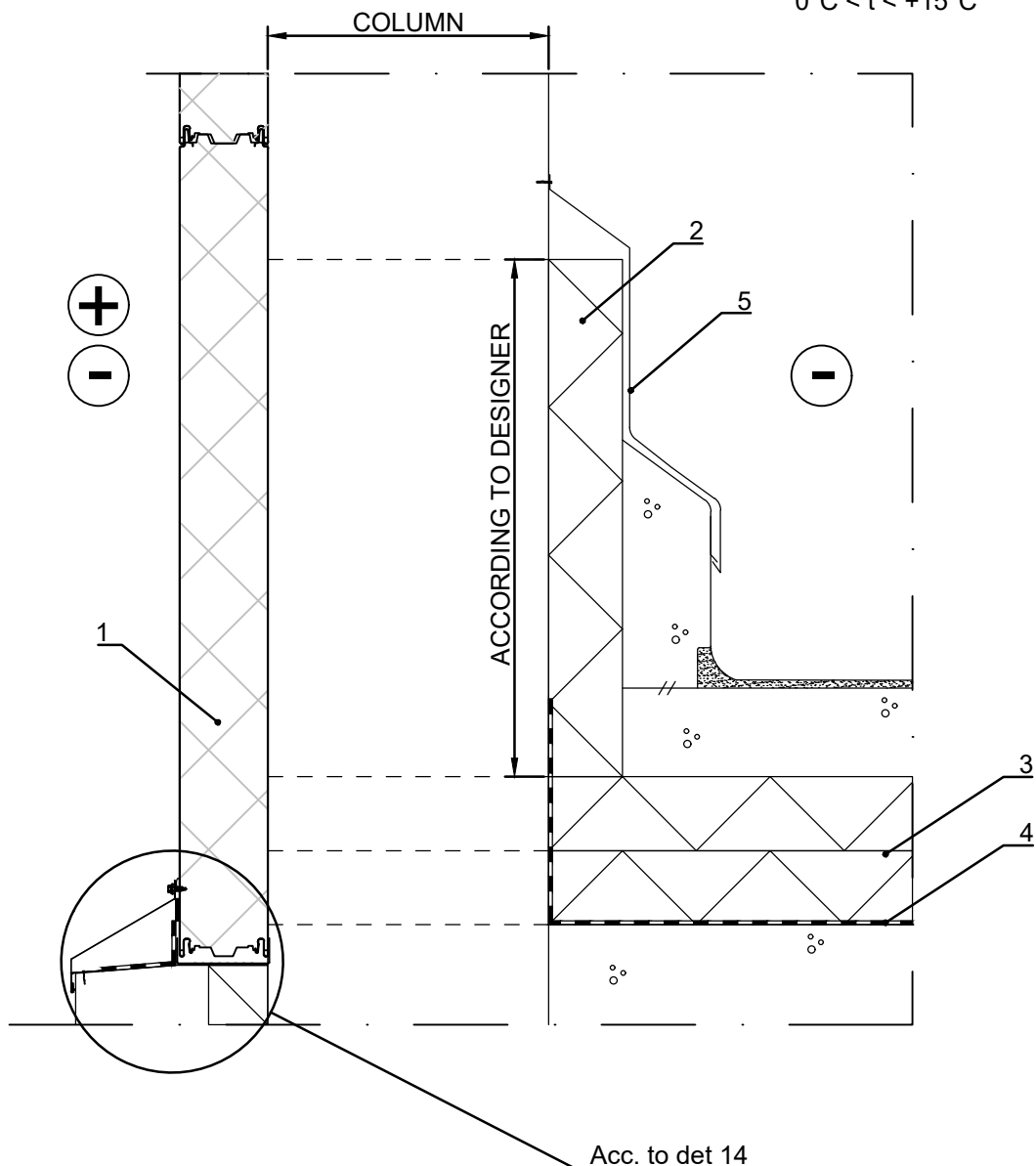
- ☐ 1. Ruukki SP2E PIR panel
- ☐ 2. Joint sealing Nordic
- ☐ 3. Corner flashing
- ☐ 4. Expanding PU-foam
- ☐ 5. Flashing fastener, washer with sealing

☒ Ruukki's delivery

Ruukki SP2E PIR
Compensation insulation on columns
with an outer wall and floor, vertical section

Date 15.04.2021	Rev. date	Work nr.	Drawing nr. SP2E-COLD-20-EN
Drawn by Ruukki	Rev.		
Scale 1:10	Building		File nr.

For temperature range between
 $0^{\circ}\text{C} < t < +15^{\circ}\text{C}$



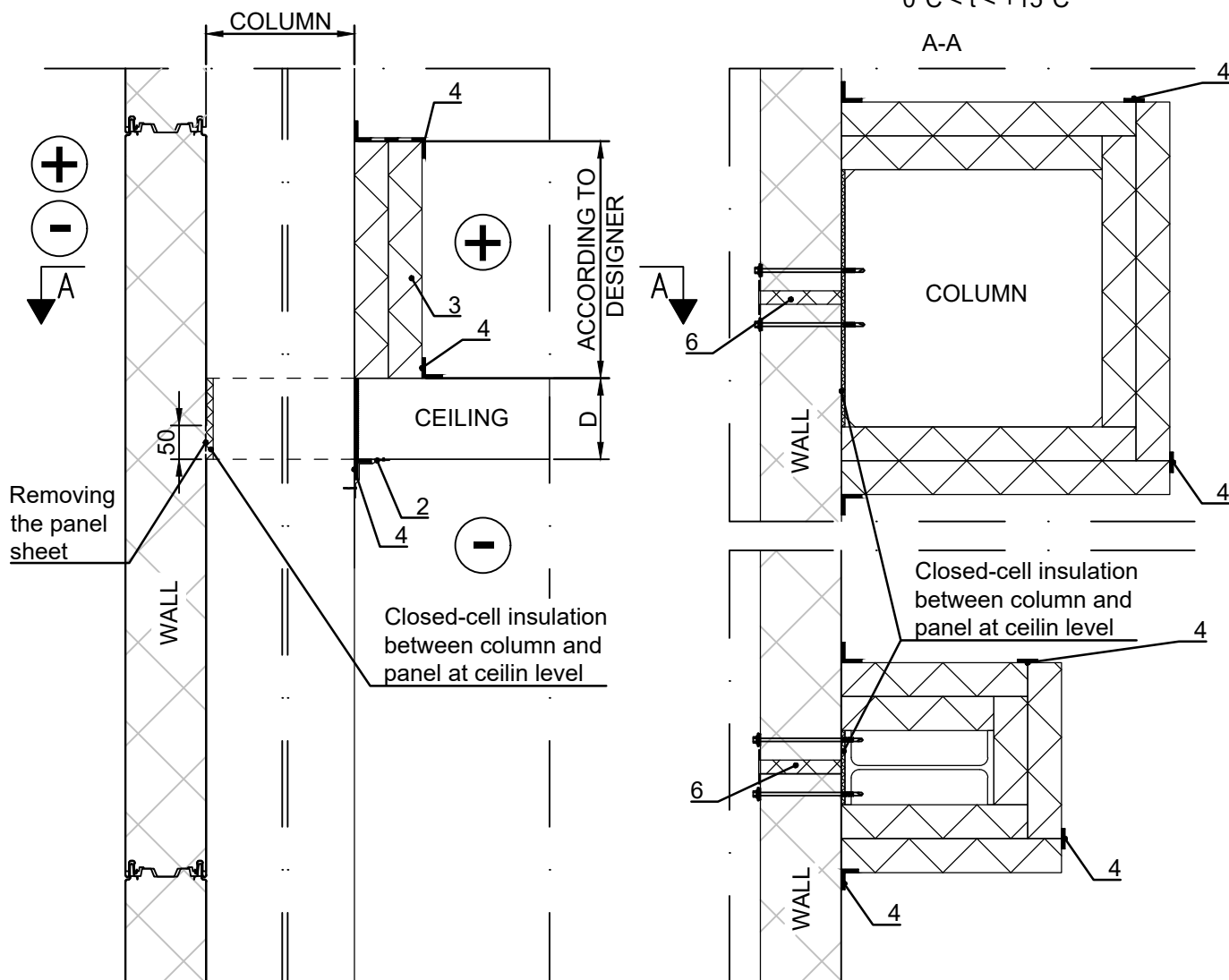
- ☐ 1. Ruukki SP2E PIR panel
- ☐ 2. Insulation compensation according to the structural designer
- ☐ 3. Floor insulation
- ☐ 4. Vapour barrier, bitum membrane
- ☐ 5. Plinth flashing and Drip wall flashing

☒ Ruukki's delivery

Ruukki SP2E PIR Compensation insulation on columns with an outer wall, dropped ceiling

Date 15.04.2021	Rev. date	Work nr.	Drawing nr. SP2E-COLD-21-EN
Drawn by Ruukki	Rev.		
Scale 1:10	Building		File nr.

For temperature range between
 $0^{\circ}\text{C} < t < +15^{\circ}\text{C}$



- ☐ 1. Ruukki SP2E PIR panel
- ☐ 2. Corner flashing fastening to steel shell with pop-rivets, fastening to concrete with spike fasteners
- ☐ 3. Aluminum coated XPS / PIR insulation
- ☐ 4. Aluminum coated butyl tape, going around the column in and out side
- ☐ 6. Expanding PU-foam
- ☐ 7. Joint sealing Nordic

☒ Ruukki's delivery

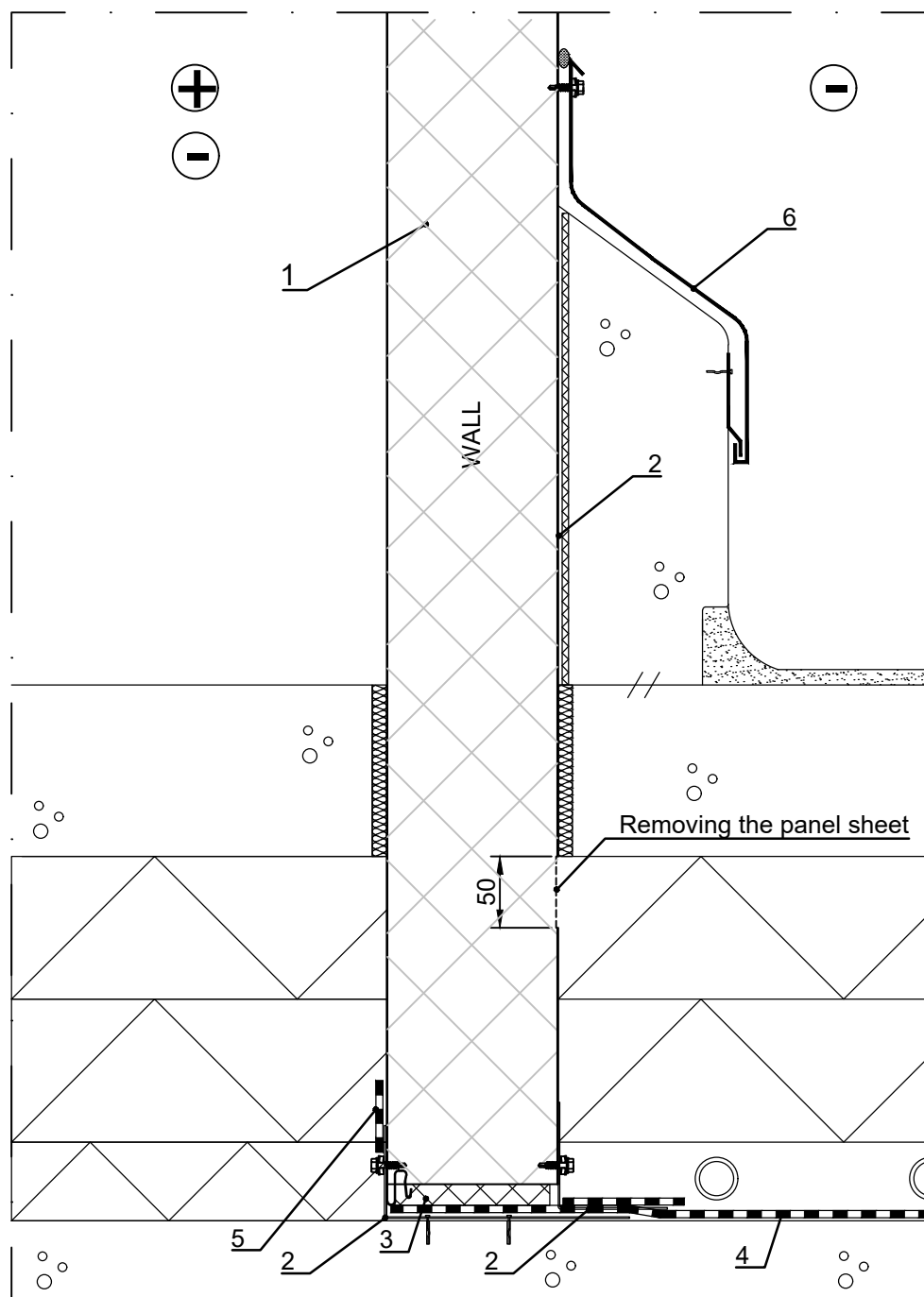


Contents of drawing

Ruukki SP2E PIR
Partition wall connection to floor
Vertical section

Date 15.04.2021	Rev. date	Work nr.	Drawing nr. SP2E-COLD-22-EN
Drawn by Ruukki	Rev.		
Scale 1:5	Building		File nr.

For temperature range between
-50°C < t < +15°C



- ☐ 1. Ruukki SP2E PIR panel
- ☐ 2. External corner flashing
- ☐ 3. Expanding sealing strip
- ☐ 4. Vapour barrier, bitum membrane
- ☐ 5. Aluminum coated butyl tape
- ☐ 6. Plinth flashing and Drip wall flashing
- ☒ Ruukki's delivery

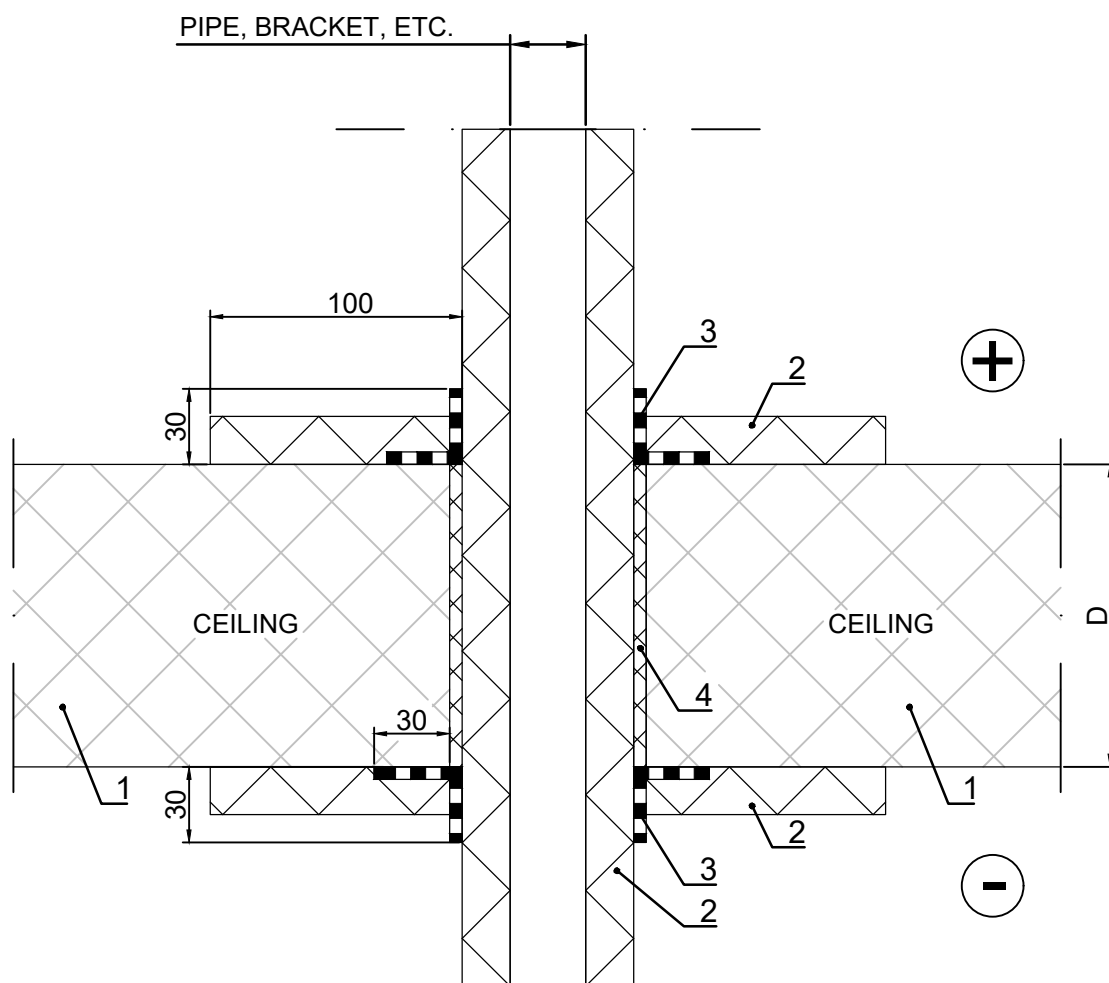


Contents of drawing

Ruukki SP2E PIR
Penetration
Vertical section

Date 15.04.2021	Rev. date	Work nr.	Drawing nr. SP2E-COLD-23-EN
Drawn by Ruukki	Rev.		
Scale 1:3	Building	File nr.	

For temperature range between
 $-50^{\circ}\text{C} < t < +15^{\circ}\text{C}$



- ☐ 1. Ruukki SP2E PIR panel
- ☐ 2. Closed-cell insulation material 19 mm
- ☐ 3. Aluminum coated butyl tape
- ☐ 4. Expanding PU-foam

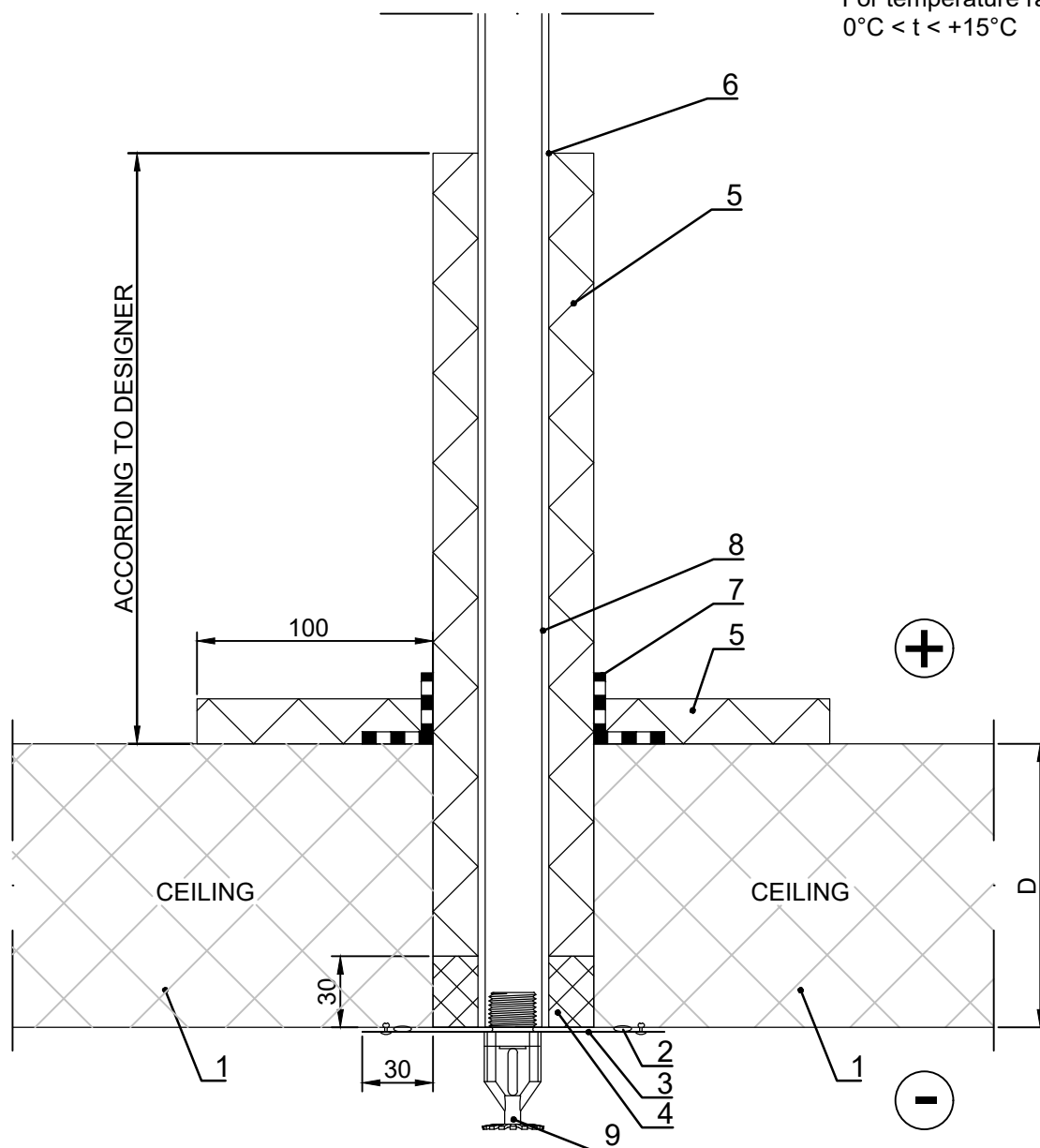
☒ Ruukki's delivery

Copyright © Ruukki Construction Oy. Allowed only for designs with Ruukki's products.

Ruukki SP2E PIR
Sprinkler installation
Vertical section

Date 15.04.2021	Rev. date	Work nr.	Drawing nr. SP2E-COLD-24-EN
Drawn by Ruukki	Rev.		
Scale 1:3	Building		File nr.

For temperature range between
 $0^{\circ}\text{C} < t < +15^{\circ}\text{C}$



- ☐ 1. Ruukki SP2E PIR panel
- ☐ 2. Permanently elastic butyl sealing compound between flashing and element
- ☐ 3. Flashing 0.6 mm. Fastening with pop rivets
- ☐ 4. Expanding PU-foam/ Flexible firestop foam
- ☐ 5. Closed-cell insulation material 19 mm.
- ☐ 6. Closed-cell insulation clued to the pipe
- ☐ 7. Aluminum coated butyl tape
- ☐ 8. Sprinkler pipe according to plans
- ☐ 9. Water sprinkler nozzle

☒ Ruukki's delivery