



Drawing nr.	Contents of drawing			
SPAC01-1E-EN	Plinth, horizontal installation			
SPAC01-2E-EN	Plinth, horizontal installation			
SPAC01-3E-EN	Plinth, horizontal installation			
SPAC01-4E-EN	Plinth, vertical and diagonal installation			
SPAC01-5E-EN	Plinth, detail			
SPAC01-6E-EN	Plinth, detail			
SPAC01-7E-EN	Plinth, detail			
SPAC01-30E-EN	Plinth, detail, Invisible flashing			
SPAC02-1E-EN	Joint between panels, horizontal installation			
SPAC02-2E-EN	Joint between panels, vertical and diagonal installation			
SPAC02-3E-EN	Joint between panels, horizontal, vertical and diagonal installation			
SPAC03-1E-EN	Vertical joint, horizontal inst., rectangle steel column, option 1			
SPAC03-30E-EN	Vertical joint, horizontal inst., rectangle steel column, Invisible			
SPAC04-1E-EN	External corner, horizontal inst., rectangle steel column, option 1			
SPAC04-2E-EN	External corner, horizontal inst., rectangle steel column, option 2			
SPAC04-30E-EN	External corner, horizontal inst., rectangle steel column, Invisible			
SPAC05-1E-EN	Internal corner, horizontal inst., rectangle steel column, option 1			
SPAC05-30E-EN	Internal corner, horizontal inst., rectangle steel column, Invisible			
SPAC06-1E-EN	Parapet, horizontal installation, side eaves			
SPAC06-2E-EN	Parapet, horizontal installation, end eaves			
SPAC06-3E-EN	Parapet, vertical and diagonal inst., side eaves			
SPAC06-4E-EN	Parapet, vertical and diagonal inst., end eaves			
SPAC06-5E-EN	Cantilever eaves, horizontal inst., side eaves, prof. sheet			
SPAC06-6E-EN	Cantilever eaves, horizontal inst., end eaves, prof. sheet			
SPAC06-7E-EN	Vapour barrier and insulation supp. flashing fastening			
SPAC06-30E-EN	Parapet, horizontal inst., end eaves, prof. sheet, Invisible			
SPAC06-31E-EN	Cantilever eaves, horizontal inst., side eaves, prof. sheet, Invisible			
SPAC07-1E-EN	Window, horizontal installation			
SPAC07-2E-EN	Window, horizontal installation			
SPAC07-3E-EN	System window, horizontal installation, large window			
SPAC07-4E-EN	System window, horizontal installation, large window			
SPAC07-30E-EN	Window, horizontal installation, Invisible			
SPAC08-1E-EN	Door, horizontal installation			
SPAC08-2E-EN	Door, horizontal installation			
SPAC08-3E-EN	Overhead door, horizontal installation			
SPAC08-4E-EN	Overhead door, horizontal installation			
SPAC08-30E-EN	Door, horizontal installation, Invisible			
City sector		Block	Site/Reg. nr.	File nr.
Building type			Drawing type Nr.	
Building, Name and address			Contents of drawing Scale	
 <p>Ruukki Construction Oy Vimpelintie 661 FI - 62900 ALAJÄRVI FINLAND</p> <p>tel +358 2059 127 fax +358 2059 27700 www.ruukki.com</p>			<p>Ruukki® Patina Panel BASE DETAIL DRAWINGS External walls</p>	
Date	Designer	Work nr.	Work nr.	Drw. nr. Rev.
15.05.2025				
Drawn by	Checked			
Ruukki				

Drawing nr.	Contents of drawing
SPAC09-1E-EN	Vertical joint between panels, vertical installation, vertical beam, option 1
SPAC09-2E-EN	Vertical joint between panels, vertical installation, concrete floor, option 2
SPAC09-3E-EN	Vertical joint between panels, vertical installation, concrete floor, option 3

City sector	Block	Site/Reg. nr.	File nr.		
Building type			Drawing type		
Building, Name and address			Contents of drawing		
 <p>Ruukki Construction Oy Vimpelintie 661 FI - 62900 ALAJÄRVI FINLAND</p> <p>tel +358 2059 127 fax +358 2059 27700 www.ruukki.com</p>			<p>Ruukki® Patina Panel BASE DETAIL DRAWINGS External walls</p>		Scale
Date	Designer	Work nr.	Work nr.	Drw. nr.	Rev.
15.05.2025					
Drawn by	Checked				
Ruukki					



Contents of drawing

Ruukki ® Patina Panel
Accessory numbers in details

Date 15.05.2025	Rev. date	Work nr.	Drawing nr. SPAC00-0E-EN
Drawn by Ruukki	Rev.		
Scale	Building		File nr.

SANDWICH PANELS

001. Ruukki ® Patina Panel 150, 200, 230

FLASHINGS

100. Standard purlins and starter tracks

101-109. Purlins and other $t \geq 2$ mm fastening flashings

111-119. Plinth flashings

131-159. Vertical seam-, external- and internal corner flashings

161-179. Eave flashings

181-194. Window- and door flashings

195-199. Flashings used in uplifted roofs

FASTENERS

201. Self-drilling element screw, washer with sealing, stainless steel

202. Self-drilling element screw, without washer, stainless steel

215. Countersink washer

231. Flashing fastener, washer with sealing, stainless

232. Flashing fastener, without washer, stainless

236. Flat headed flashing fastener, stainless

242. Fastener screw, without washer, stainless

255. Spike fastener, without washer

265. Fastener screw to wood, washer with sealing, stainless steel

270. Installation sleeve

SEALANTS AND INSULATIONS

300. Expandable sealing band

301. Plinth sealing expanding

302. Sealing band for wood/steel frame

303. Sealing band for concrete frame

305. Sealing band

306. ISO-BUTYL self-adhesive butyl tape 2x10 mm

307. Ruukki joint sealing tape

308. Self adhesive butyl band

309. Ruukki joint sealing tape

310. Mineral- / stonewool

312. Mineral wool band

321. Elastic sealant

325. Elastic sealant during installation

327. Elastic polyurethane, eg. Illbruck FM330 tai FM637

330. PU insulation

331. EPDM sealing

333. Separating strip EPDM

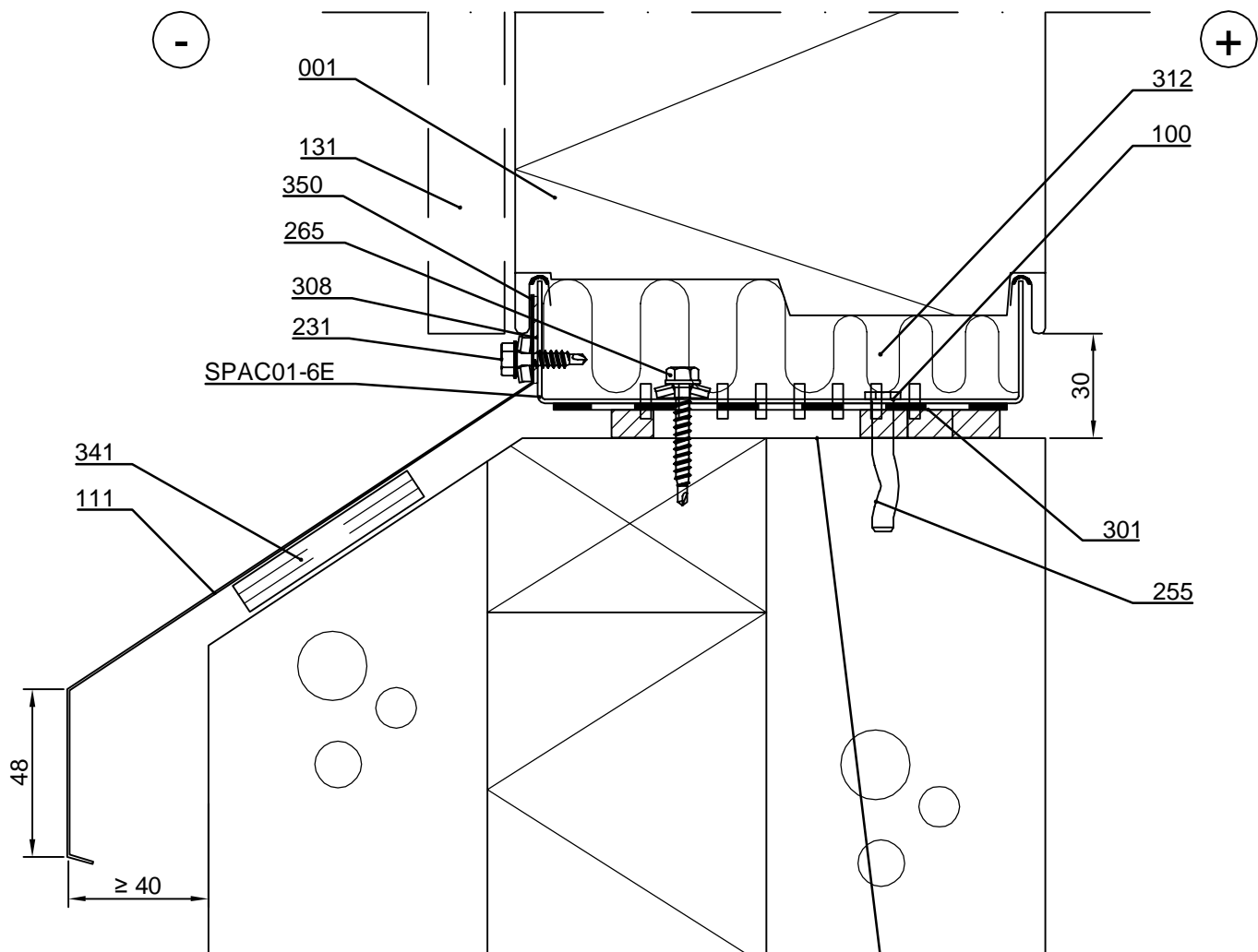
341. Plywood

342. L-profile

350. PVC tape

351. Sealing EPDM Round 426 100

Date 15.05.2025	Rev. date	Work nr.	Drawing nr. SPAC01-1E-EN
Drawn by Ruukki	Rev.		
Scale 1:2	Building		File nr.

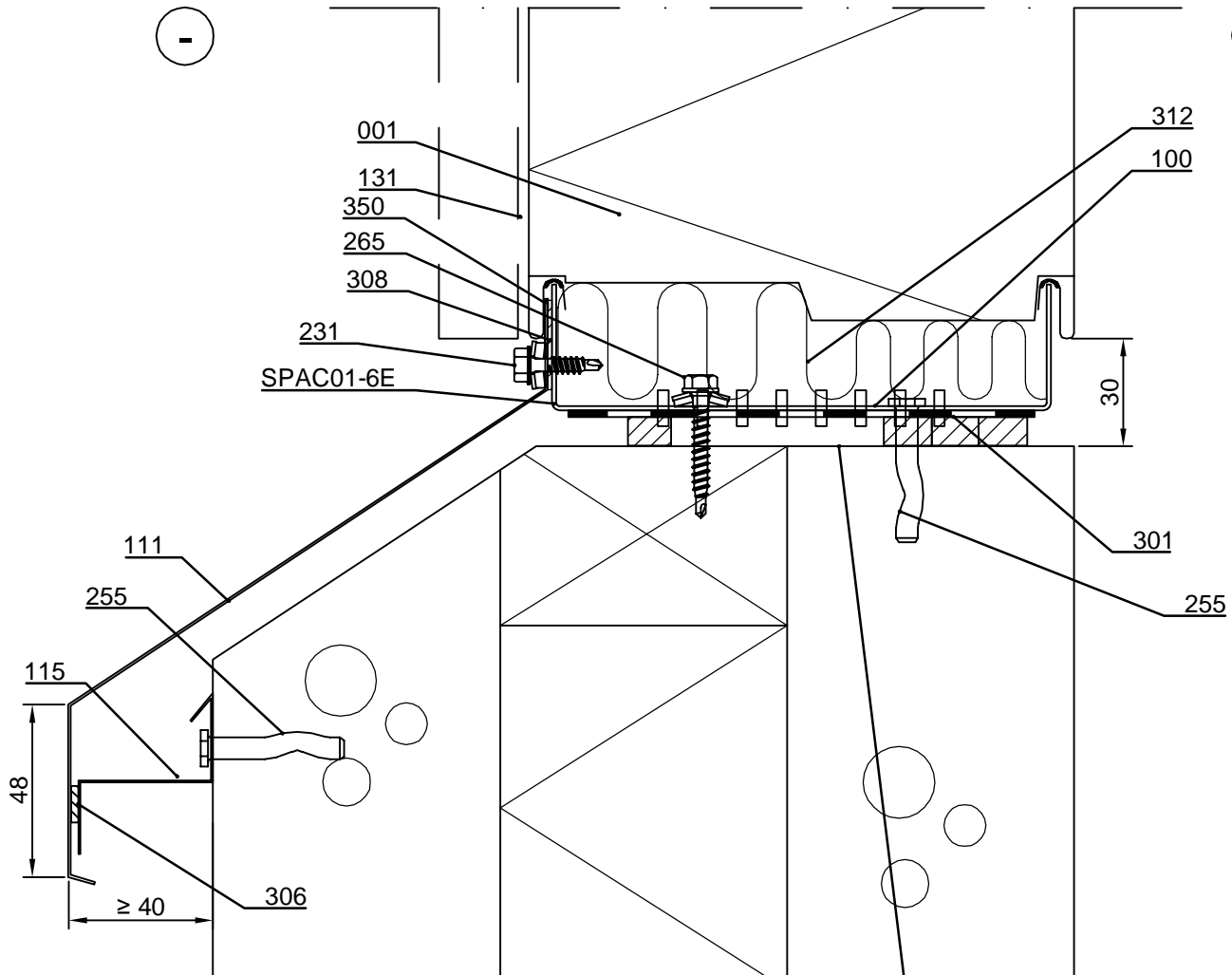


- ☐ 001. Ruukki ® Patina Panel
- ☐ 100. /EA1U___/ Starter track
- ☐ 111. /EA1P6/ COR-TEN cill flashing (installed simultaneously with panels)
- ☐ 131. /EA1JV12/ COR-TEN Vertical joint flashing
- ☐ 231. Flashing fastener, washer with sealing *
- ☐ 255. /S5R48038/ Spike-fastener, concrete c/c600 || or
- ☐ 265. /S3H55042WA4B/ Fastener, wood c/c600
- ☐ 301. /EA3PSE/ Plinth sealing expanding (wider sealing on internal side)
- ☐ 308. /EA3BB3001/ Self adhesive butyl band
- ☐ 312. /EAWS___/ Mineral wool band
- ☐ 341. Plywood, if necessary
- ☐ 350. /EA3PVCT25/ PVC tape (between bottom flashing and panel)

☒ Ruukki's delivery

*Fastener material stainless steel

Date 15.05.2025	Rev. date	Work nr.	Drawing nr. SPAC01-2E-EN
Drawn by Ruukki	Rev.		
Scale 1:2	Building		File nr.



- ☐ 001. Ruukki ® Patina Panel
- ☐ 100. /EA1U___/ Starter track
- ☐ 111. /EA1P6/ COR-TEN cill flashing (installed simultaneously with panels)
- ☐ 115. Support flashing (installed simultaneously with elements)
- ☐ 131. /EA1JV12/ COR-TEN vertical joint flashing
- ☐ 231. Flashing fastener, washer with sealing *
- ☐ 255. /S5R48038/ Spike-fastener, concrete c/c600 || or
- ☐ 265. /S3H55042WA4B/ Fastener, wood c/c600
- ☐ 301. /EA3PSE/ Plinth sealing expanding (wider sealing on internal side)
- ☐ 306. /EA3IBST1002/ Self adhesive butyl tape 2x10 mm
- ☐ 308. /EA3BB3001/ Self adhesive butyl band
- ☐ 312. /EAWS___/ Mineral wool band
- ☐ 350. /EA3PVCT25/ PVC tape (between bottom flashing and panel)

☒ Ruukki's delivery

*Fastener material stainless steel

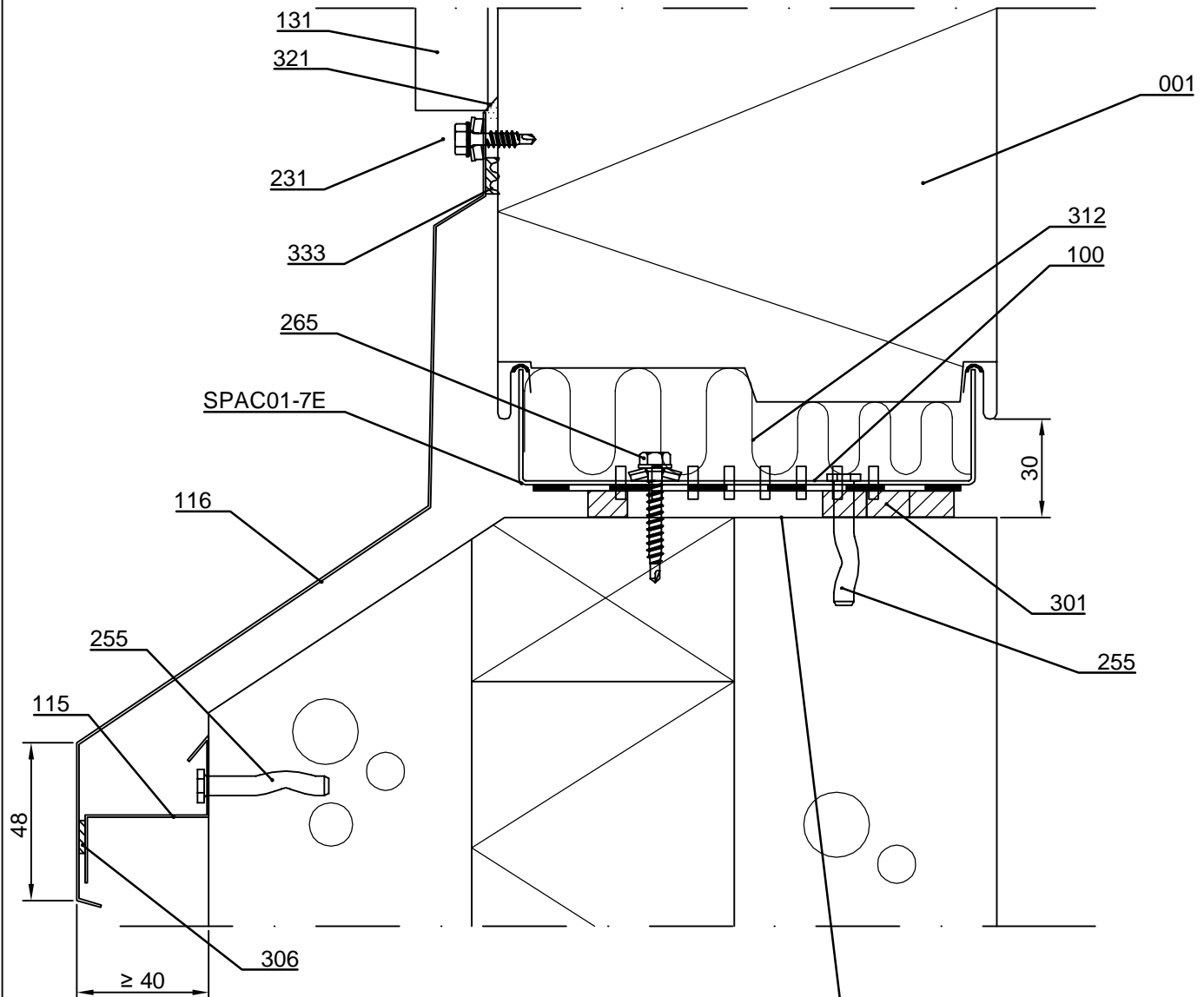


Contents of drawing

Ruukki ® Patina Panel

Horizontal installation, plinth, vertical section
Option 3

Date 15.05.2025	Rev. date	Work nr.	Drawing nr. SPAC01-3E-EN
Drawn by Ruukki	Rev.		
Scale 1:2	Building		File nr.



- ☐ 001. Ruukki ® Patina Panel
- ☐ 100. /EA1U___/ Starter track
- ☐ 115. Support flashing (installed simultaneously with panels)
- ☐ 116. /EA1P7/ COR-TEN cill flashing (can be installed after panel installation)
- ☐ 131. /EA1JV12/ COR-TEN vertical joint flashing
- ☐ 231. Flashing fastener, washer with sealing *
- ☐ 255. /S5R48038/ Spike-fastener, concrete c/c600 || or
- ☐ 265. /S3H55042WA4B/ Fastener, wood c/c600
- ☐ 301. /EA3PSE/ Plinth sealing expanding (wider sealing on internal side)
- ☐ 306. /EA3IBST1002/ Self adhesive butyl tape 2x10 mm
- ☐ 312. /EAWS___/ Mineral wool band
- ☐ 321. /EA3SM310___/ Elastic sealant mastic
- ☐ 333. /CA3SE410/ Separating strip EPDM

Special care should be taken
to ensure the smoothness of the
top of plinth, tolerance ± 5 mm

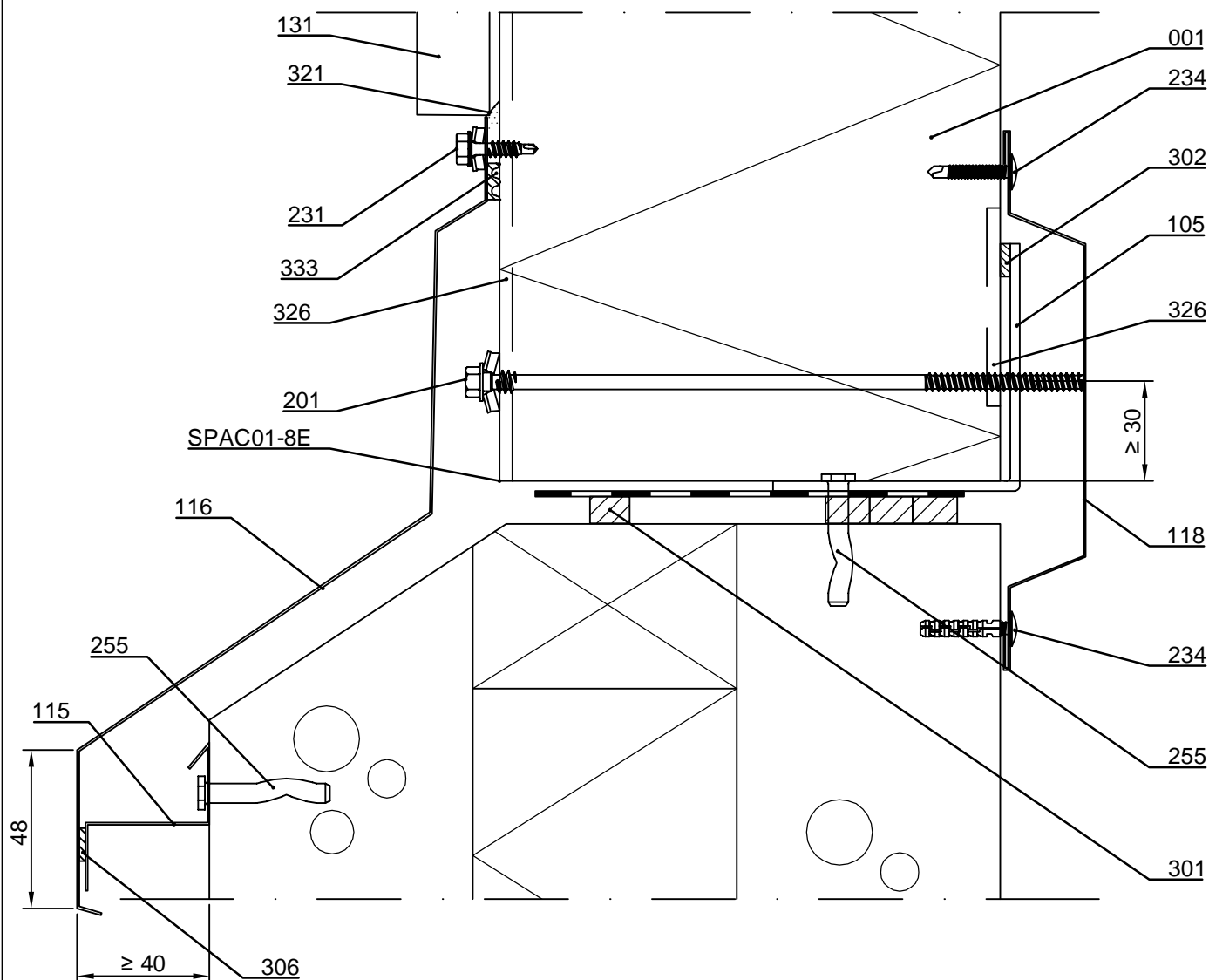
☒ Ruukki's delivery

*Fastener material stainless steel

Copyright © Ruukki Construction Oy. Allowed only for designs with Ruukki's products.

Ruukki ® Patina Panel
vertical and diagonal installation
Plinth, vertical section

Date 15.05.2025	Rev. date	Work nr.	Drawing nr. SPAC01-4E-EN
Drawn by Ruukki	Rev.		
Scale 1:2	Building		File nr.



- ☐ 001. Ruukki ® Patina Panel
- ☐ 105. /EA1L75/ Support L-purlin, (t=3mm)
- ☐ 115. Support flashing (installed with panels)
- ☐ 116. /EA1P7/ COR-TEN cill flashing
(can be installed afterwards)
- ☐ 118. Cover flashing, according to project
- ☐ 131. /EA1JV12/ COR-TEN vertical joint flashing
- ☐ 201. Self-drilling element screw, washer with sealing *
- ☐ 231. Flashing fastener, washer with sealing *
- ☐ 234. Flat head flashing fastener
- ☐ 255. /S5R48038/ Spike-fastener, concrete c/c600
- ☐ 301. /EA3PSE/ Plinth sealing expanding
(wider sealing on internal side)
- ☐ 302. /EA3SS410/ Sealing strip
- ☐ 306. /EA3IBST1002/ Self adhesive butyl
tape 2x10 mm
- ☐ 321. /EA3SM310___/ Elastic sealant mastic
- ☐ 326. /EA3SM310___/ Elastic sealant during inst.
to outer female groove full length of element and
inner female groove 60 mm from panel end
- ☐ 333. /CA3SE410/ Separating strip EPDM

☒ Ruukki's delivery

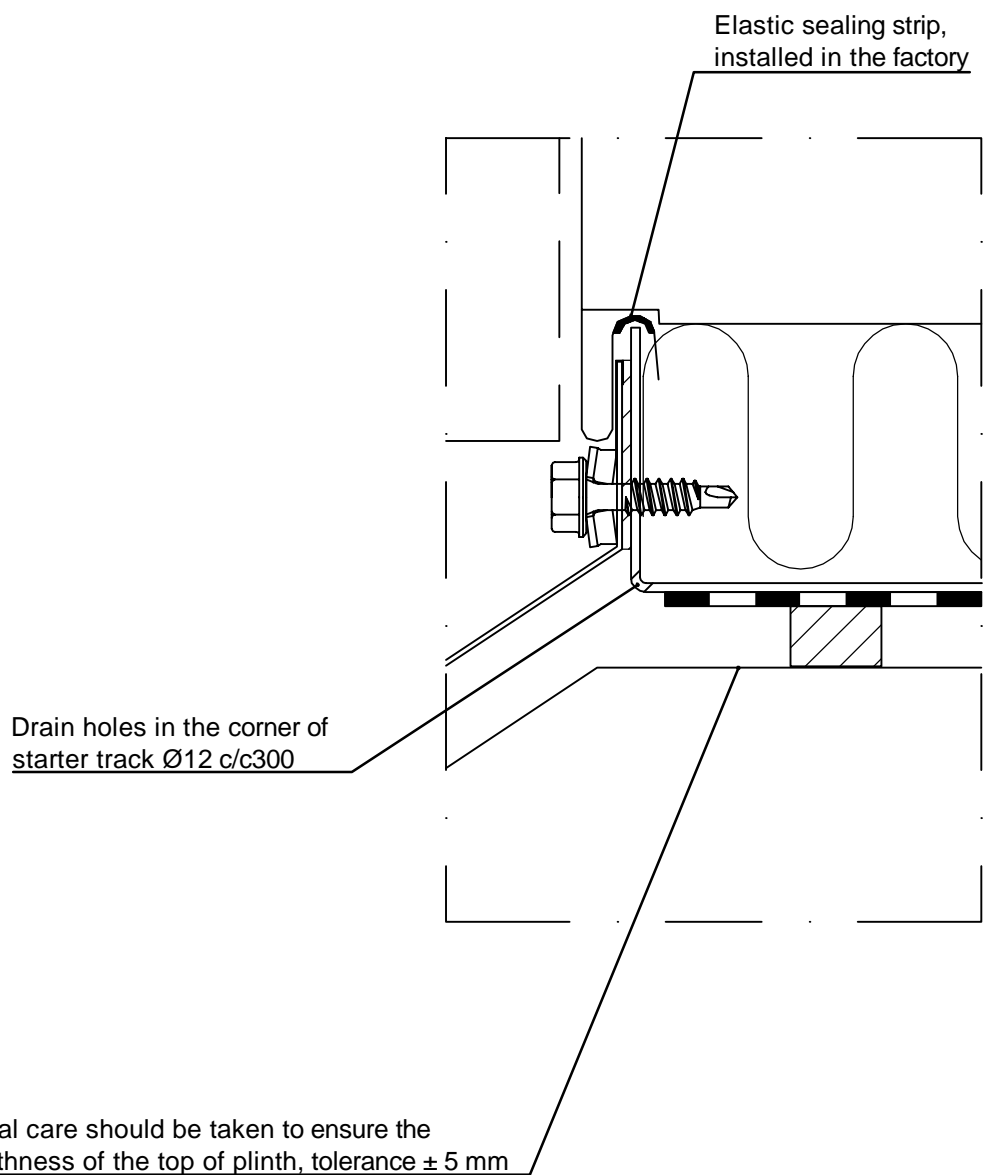
*Fastener material stainless steel



Contents of drawing

Ruukki ® Patina Panel
Horizontal installation, plinth, detail

Date 15.05.2025	Rev. date	Work nr.	Drawing nr. SPAC01-5E-EN
Drawn by Ruukki	Rev.		
Scale 1:1	Building		File nr.

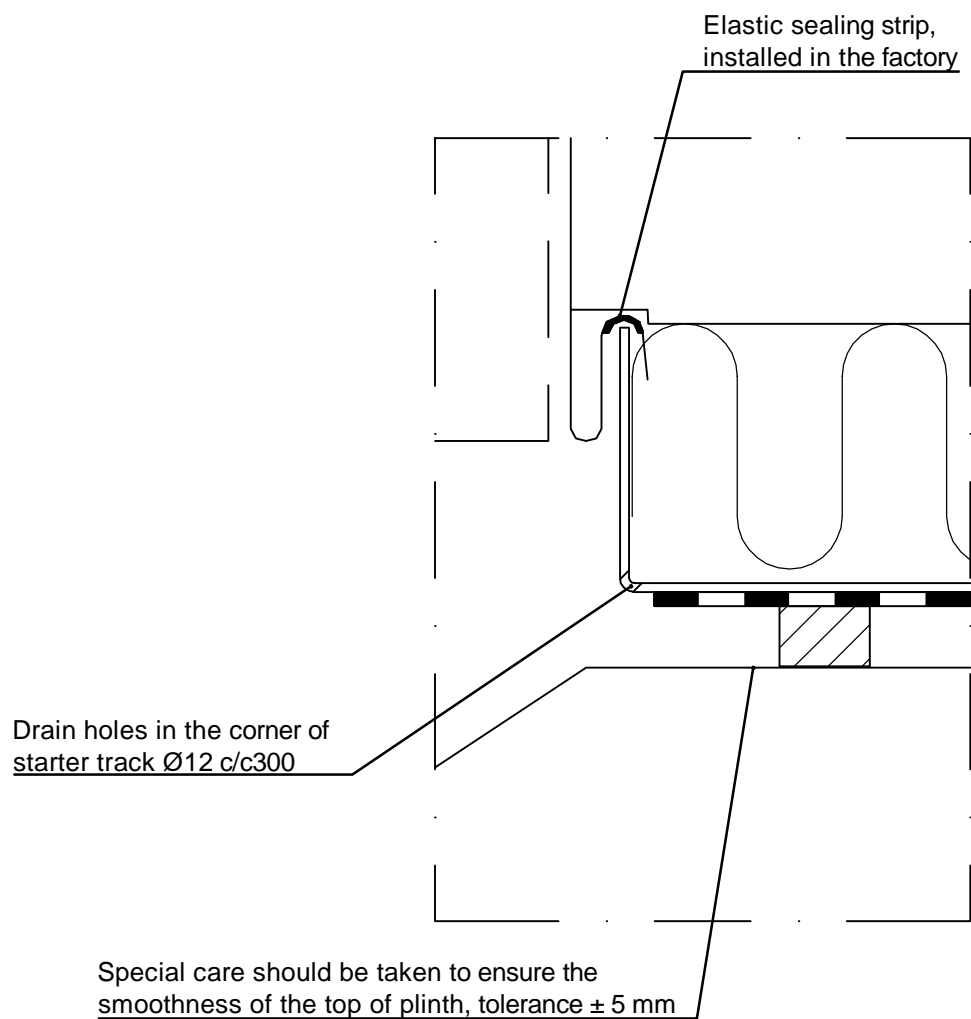




Contents of drawing

Ruukki ® Patina Panel
Horizontal installation, plinth, detail

Date 15.05.2025	Rev. date	Work nr.	Drawing nr. SPAC01-6E-EN
Drawn by Ruukki	Rev.		
Scale 1:1	Building		File nr.

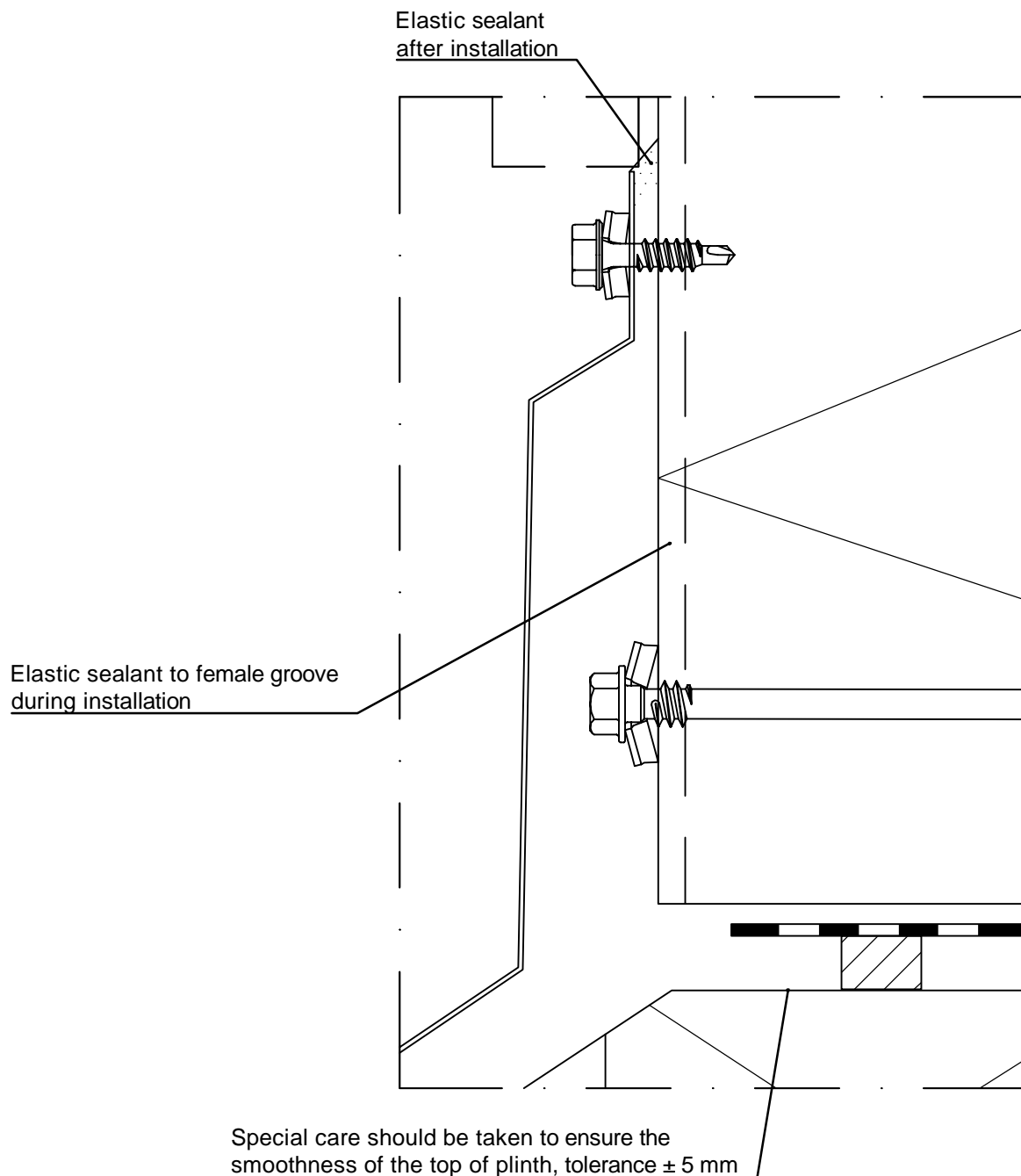




Contents of drawing

Ruukki ® Patina Panel
vertical and diagonal installation
Plinth, detail

Date 15.05.2025	Rev. date	Work nr.	Drawing nr. SPAC01-7E-EN
Drawn by Ruukki	Rev.		
Scale 1:1	Building		File nr.





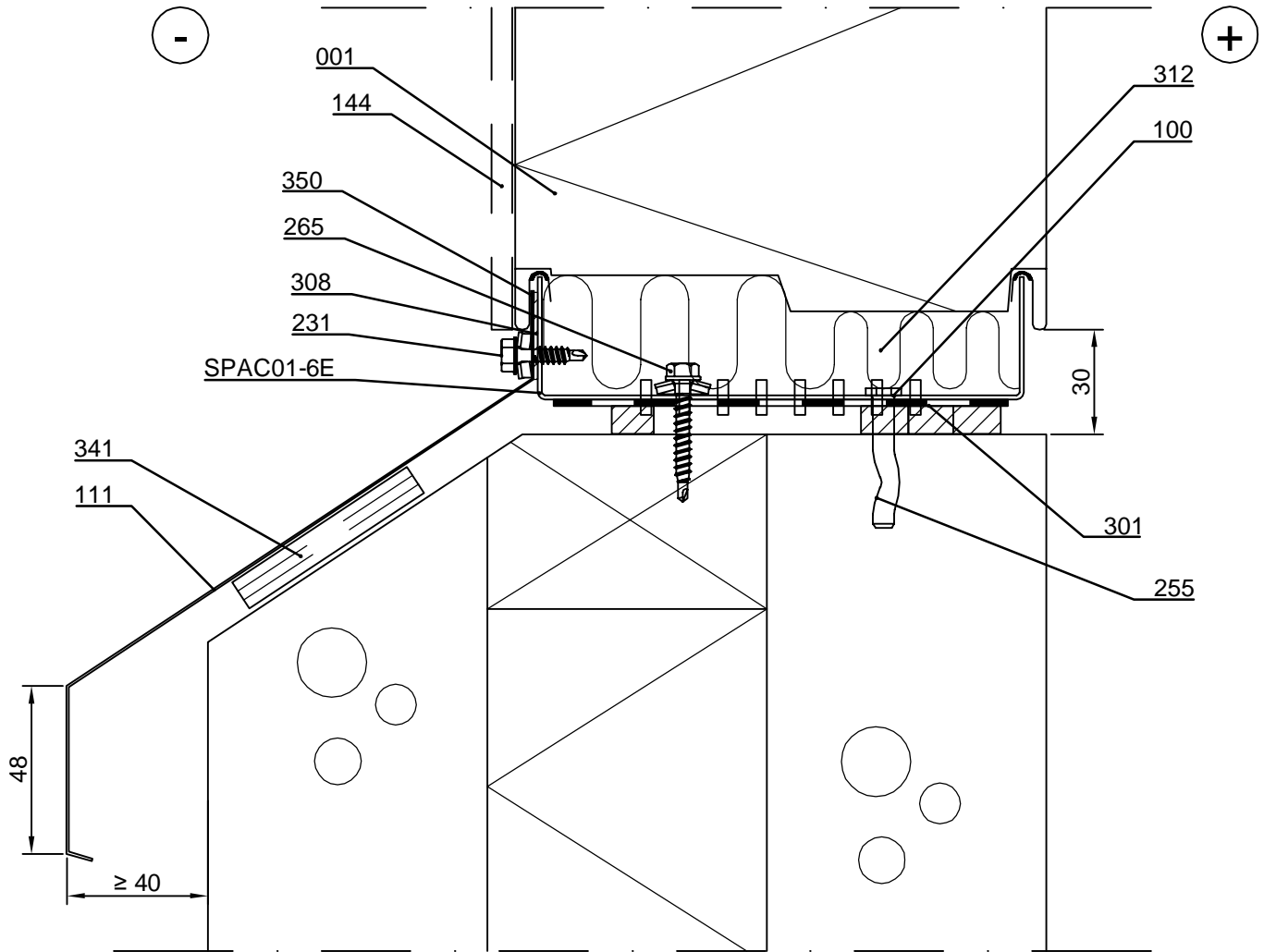
Contents of drawing

Ruukki ® Patina Panel

horizontal installation, plinth, vertical section

Invisible flashing

Date 15.05.2025	Rev. date	Work nr.	Drawing nr. SPAC01-30E-EN
Drawn by Ruukki	Rev.		
Scale 1:2	Building		File nr.



- ☐ 001. Ruukki ® Patina Panel
- ☐ 100. /EA1U___/ Starter track
- ☐ 111. /EA1P6/ COR-TEN cill flashing (installed simultaneously with panels)
- ☐ 144. /EA1JVI/ COR-TEN vertical joint flashing invisible
- ☐ 231. Flashing fastener, washer with sealing *
- ☐ 255. /S3R48038/ Spike-fastener, concrete c/c600
- ☐ 265. /S3H55042WA4B/ Fastener, wood c/c600
- ☐ 301. /EA3PSE/ Plinth sealing expanding (wider sealing on internal side)
- ☐ 308. /EA3BB3001/ Self adhesive butyl band
- ☐ 312. /EAWS___/ Mineral wool band
- ☐ 341. Plywood, if necessary
- ☐ 350. /EA3PVCT25/ PVC tape (between bottom flashing and panel)

☒ Ruukki's delivery

*Fastener material stainless steel

Copyright © Ruukki Construction Oy. Allowed only for designs with Ruukki's products.

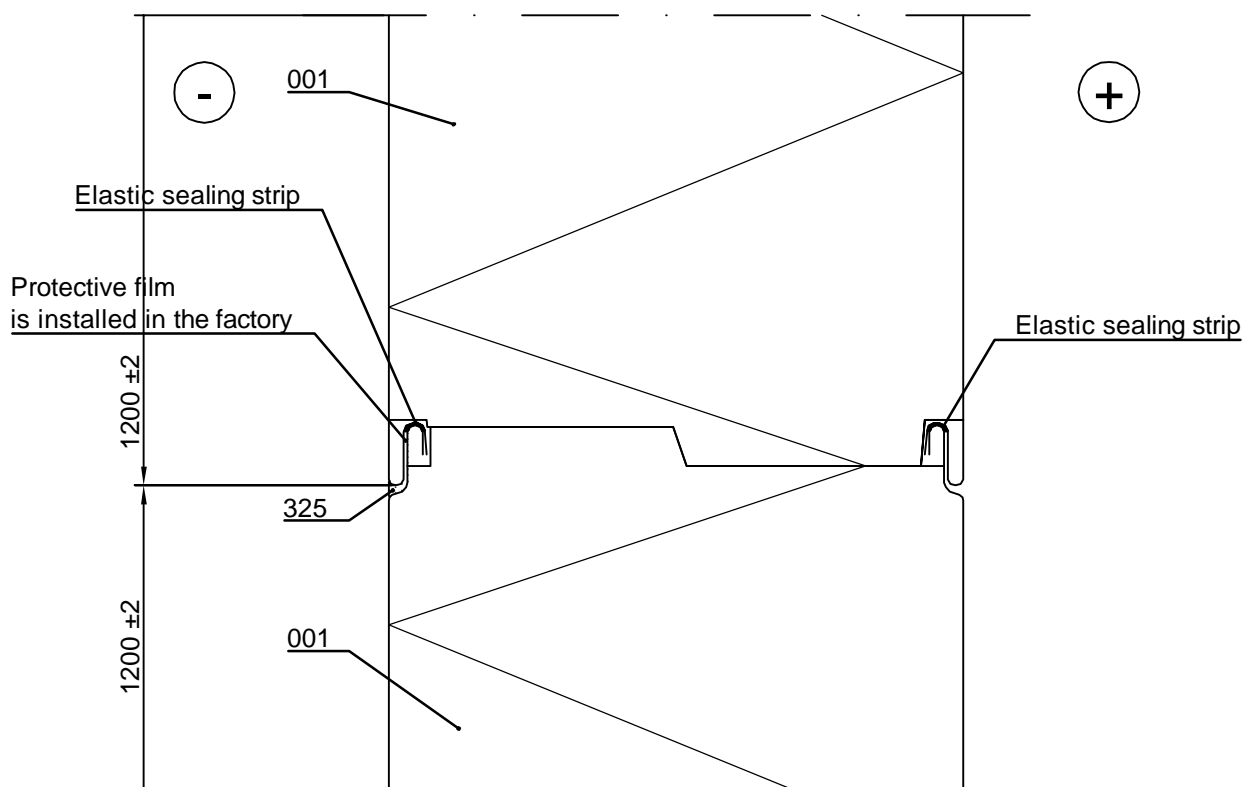


Contents of drawing

Ruukki ® Patina Panel

Horizontal installation, joint between panels,
Vertical section

Date 15.05.2025	Rev. date	Work nr.	Drawing nr. SPAC02-1E-EN
Drawn by Ruukki	Rev.		
Scale 1:2	Building		File nr.



- ☐ 001. Ruukki ® Patina Panel
- ☐ 325. /EA3SM310___/ Elastic sealant during installation to outer female groove
to length equivalent to vertical joint flashing width and inner female groove in length of sealing
- ☒ Ruukki's delivery

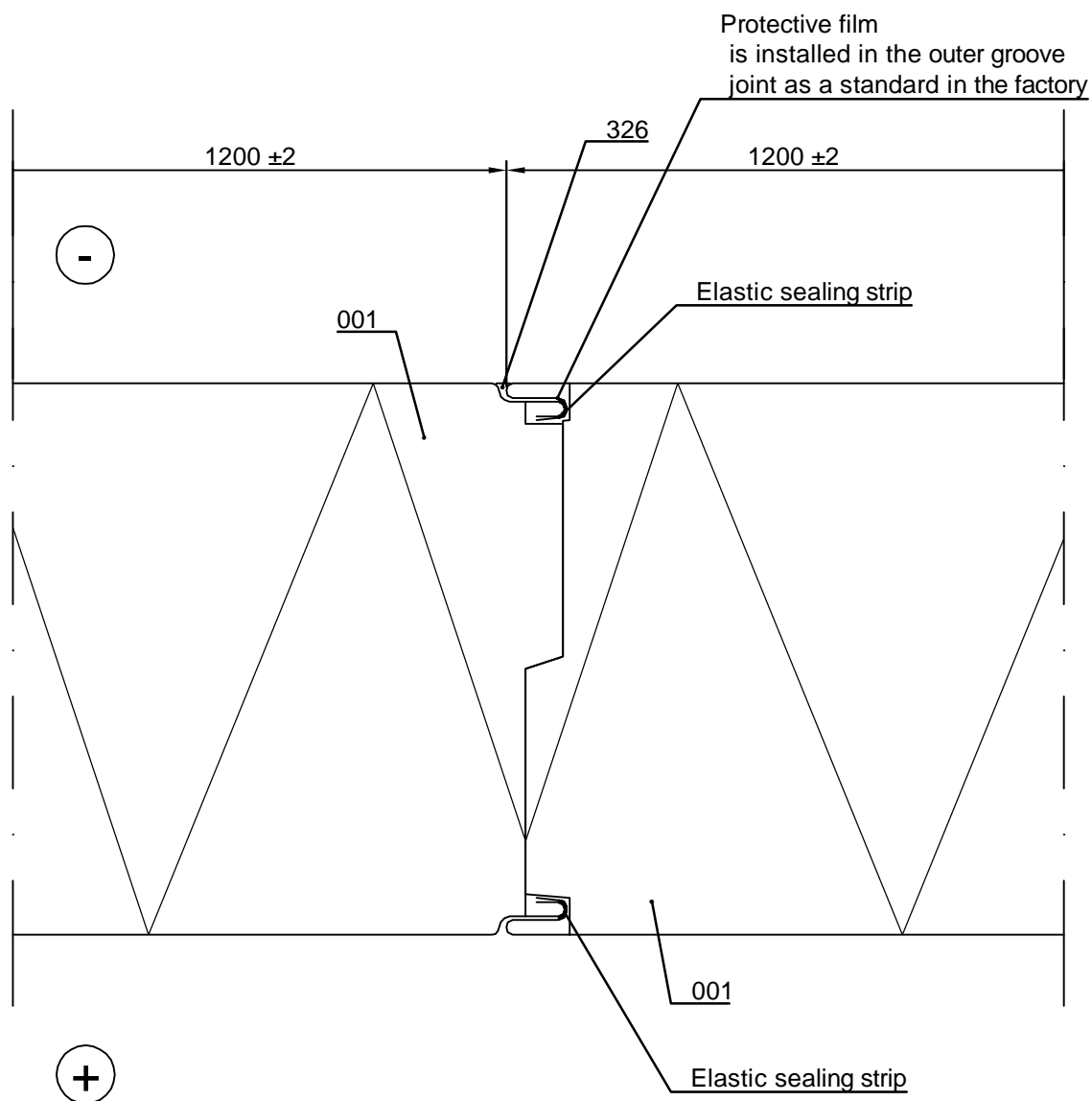
Copyright © Ruukki Construction Oy. Allowed only for designs with Ruukki's products.



Contents of drawing

Ruukki ® Patina Panel
vertical- and diagonal installation
Joint between panels, horizontal section

Date 15.05.2025	Rev. date	Work nr.	Drawing nr. SPAC02-2E-EN
Drawn by Ruukki	Rev.		
Scale 1:2	Building		File nr.



- ☐ 001. Ruukki ® Patina Panel
- ☐ 326. /EA3SM310___/ Elastic sealant during installation to outer female groove in full length of element and inner female groove 60 mm from panel end

☒ Ruukki's delivery

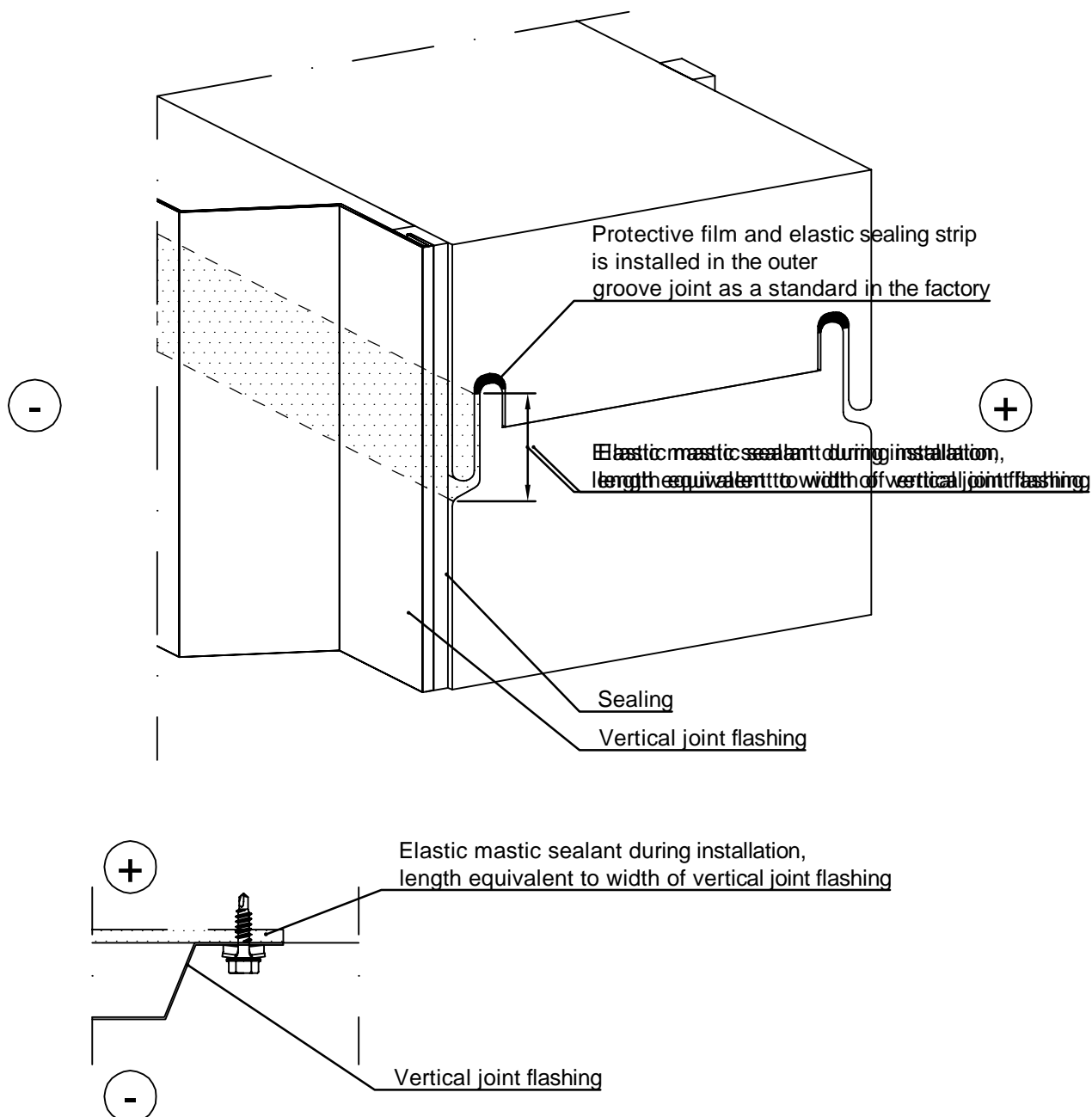
Copyright © Ruukki Construction Oy. Allowed only for designs with Ruukki's products.



Contents of drawing

Ruukki ® Patina Panel
horizontal, vertical and diagonal installation
Joint between panels

Date 15.05.2025	Rev. date	Work nr.	Drawing nr. SPAC02-3E-EN
Drawn by Ruukki	Rev.		
Scale 1:1	Building		File nr.



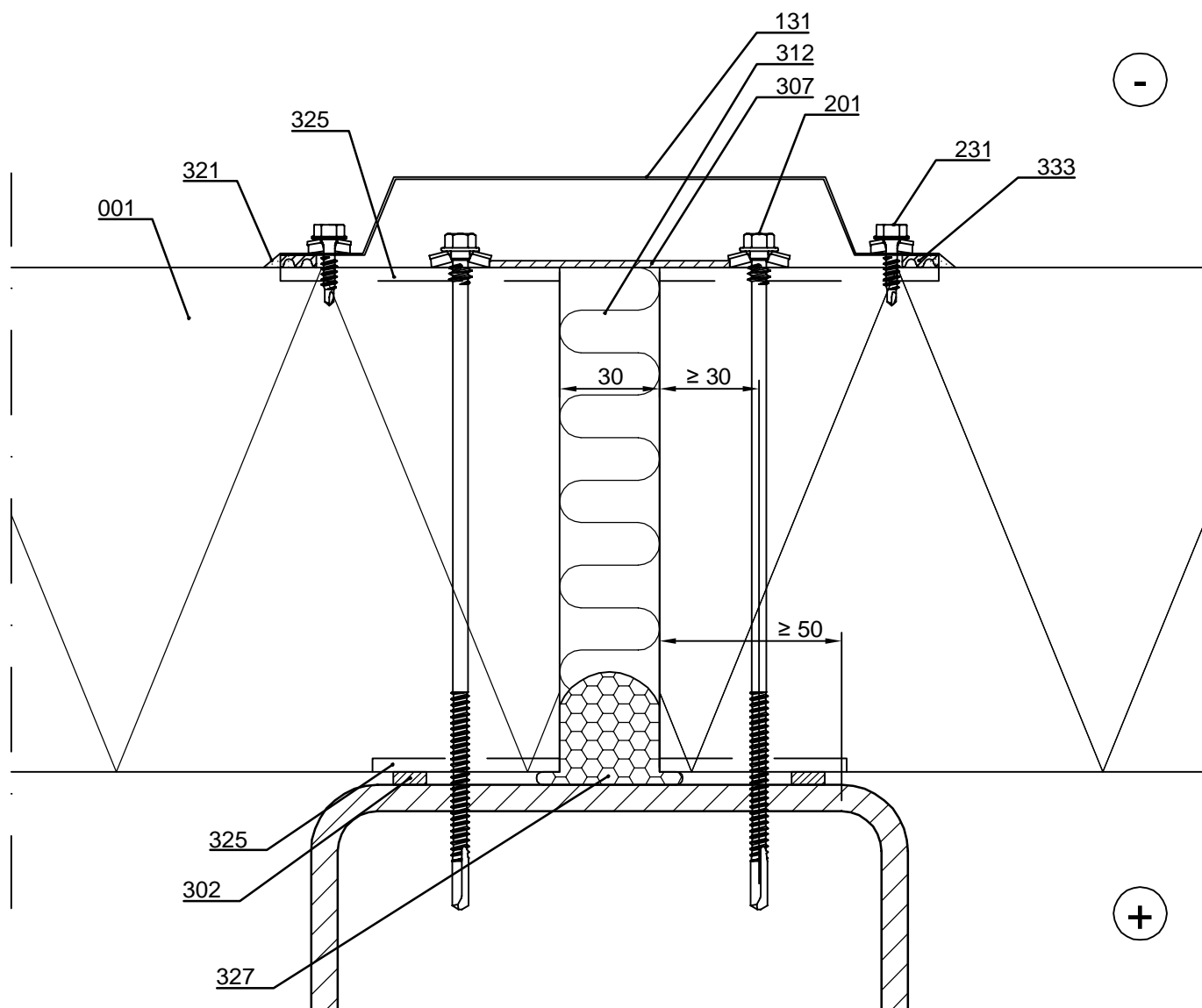
Horizontal installation:

Elastic mastic sealant during installation to outer female groove. Length equivalent to width of vertical joint flashing. It is important that the groove is completely filled with mastic sealant, i.e. it must be applied before interlocking the joint.

Vertical installation:

Elastic mastic sealant during installation to outer female groove in full length of panel and inner female groove 60 mm in length. It is important that the groove is completely filled with mastic sealant, i.e. it must be applied before interlocking the joint.

Date 15.05.2025	Rev. date	Work nr.	Drawing nr. SPAC03-1E-EN
Drawn by Ruukki	Rev.		
Scale 1:2	Building		File nr.



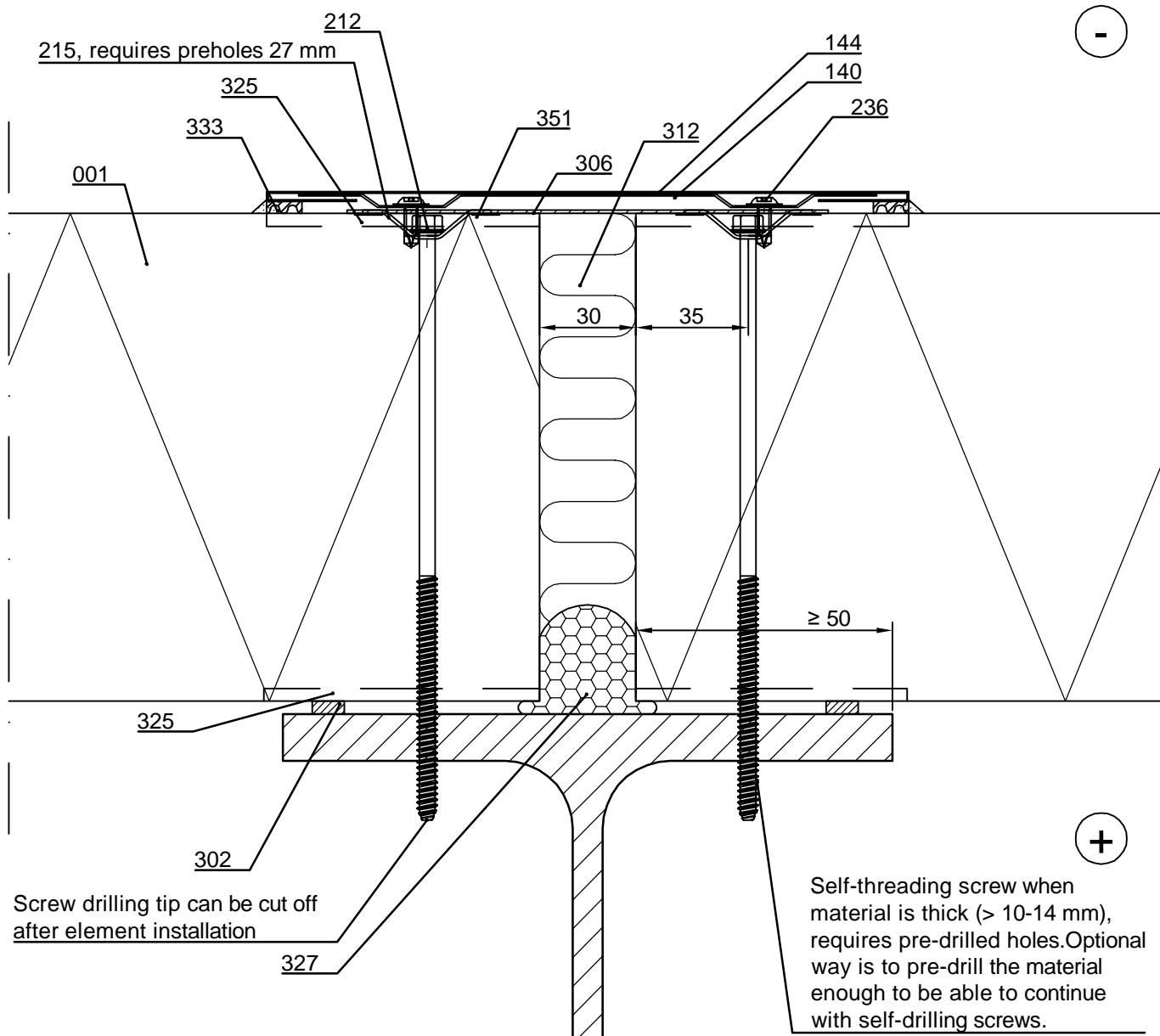
- | | |
|--|--|
| <input type="checkbox"/> 001. Ruukki ® Patina Panel | <input type="checkbox"/> 325. /EA3SM310___/ Elastic sealant during inst. |
| <input type="checkbox"/> 131. /EA1JV12/ COR-TEN vertical joint flashing | to outer female groove in length equivalent to |
| <input type="checkbox"/> 201. Self-drilling element screw, washer with sealing * | vertical joint flashing width and inner female groove |
| <input type="checkbox"/> 231. Flashing fastener, washer with sealing * | in length of sealing |
| <input type="checkbox"/> 302. /EA3SS410/ Sealing strip | <input type="checkbox"/> 327. Elastic polyurethane foam |
| <input type="checkbox"/> 307. /EA3JS7525/ Ruukki joint sealing tape | <input type="checkbox"/> 333. /CA3SE410/ Separating strip EPDM |
| <input type="checkbox"/> 312. /EAWS___/ Mineral wool band | |
| <input type="checkbox"/> 321. /EA3SM310___/ Elastic sealant mastic | |

☒ Ruukki's delivery

*Fastener material stainless steel

Ruukki ® Patina Panel
Horizontal installation
Vertical joint, horizontal section, Invisible

Date 15.05.2025	Rev. date	Work nr.	Drawing nr. SPAC03-30E-EN
Drawn by Ruukki	Rev.		
Scale 1:2	Building		File nr.

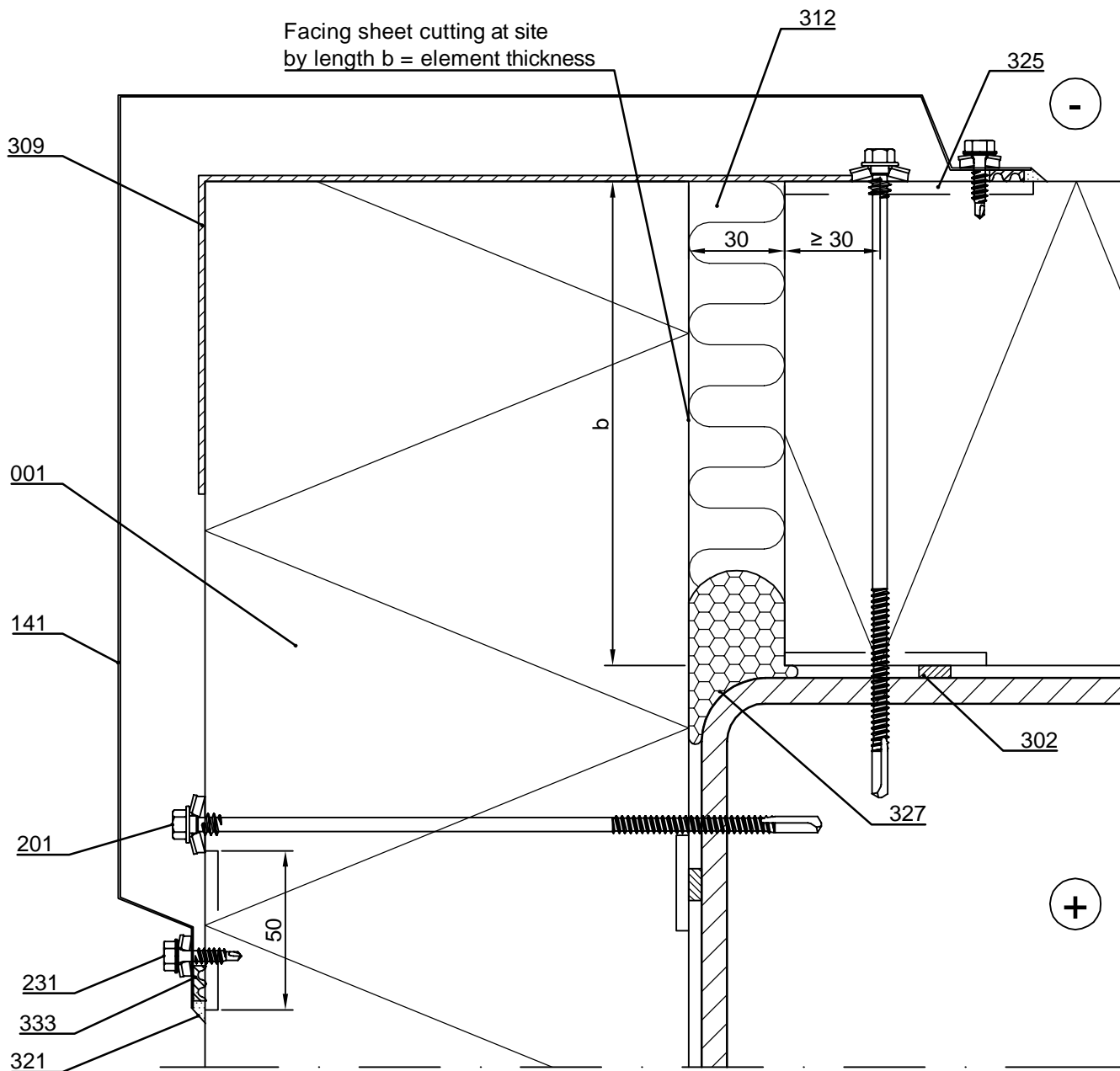


- | | |
|---|--|
| <input type="checkbox"/> 001. Ruukki ® Patina Panel | <input type="checkbox"/> 312. /EAWS___/ Mineral wool |
| <input type="checkbox"/> 140. /EA1JVB4/ Vertical bottom flashing invisible | <input type="checkbox"/> 325. /EA3SM310___/ Elastic sealant during inst. |
| <input type="checkbox"/> 144. /EA1JVI/ COR-TEN vertical flashing invisible | to outer female groove in length equivalent to |
| <input type="checkbox"/> 212. Self-drilling element screw, without washer, stainless* | vertical joint flashing width and inner female groove |
| <input type="checkbox"/> 215. /EA2W40-910S/ Countersink washer * | in length of sealing |
| <input type="checkbox"/> 236. Flat headed flashing fastener * | <input type="checkbox"/> 327. Elastic polyurethane foam |
| <input type="checkbox"/> 302. /EA3SS410/ Sealing strip | <input type="checkbox"/> 333. /CA3SE410/ Separating strip EPDM |
| <input type="checkbox"/> 306. /EA3JS15025/ Ruukki joint sealing tape | <input type="checkbox"/> 351. /EA2R0S/ Sealing EPDM Round 426 100 |

☒ Ruukki's delivery

*Fastener material stainless steel

Date 15.05.2025	Rev. date	Work nr.	Drawing nr. SPAC04-1E-EN
Drawn by Ruukki	Rev.		
Scale 1:2	Building		File nr.



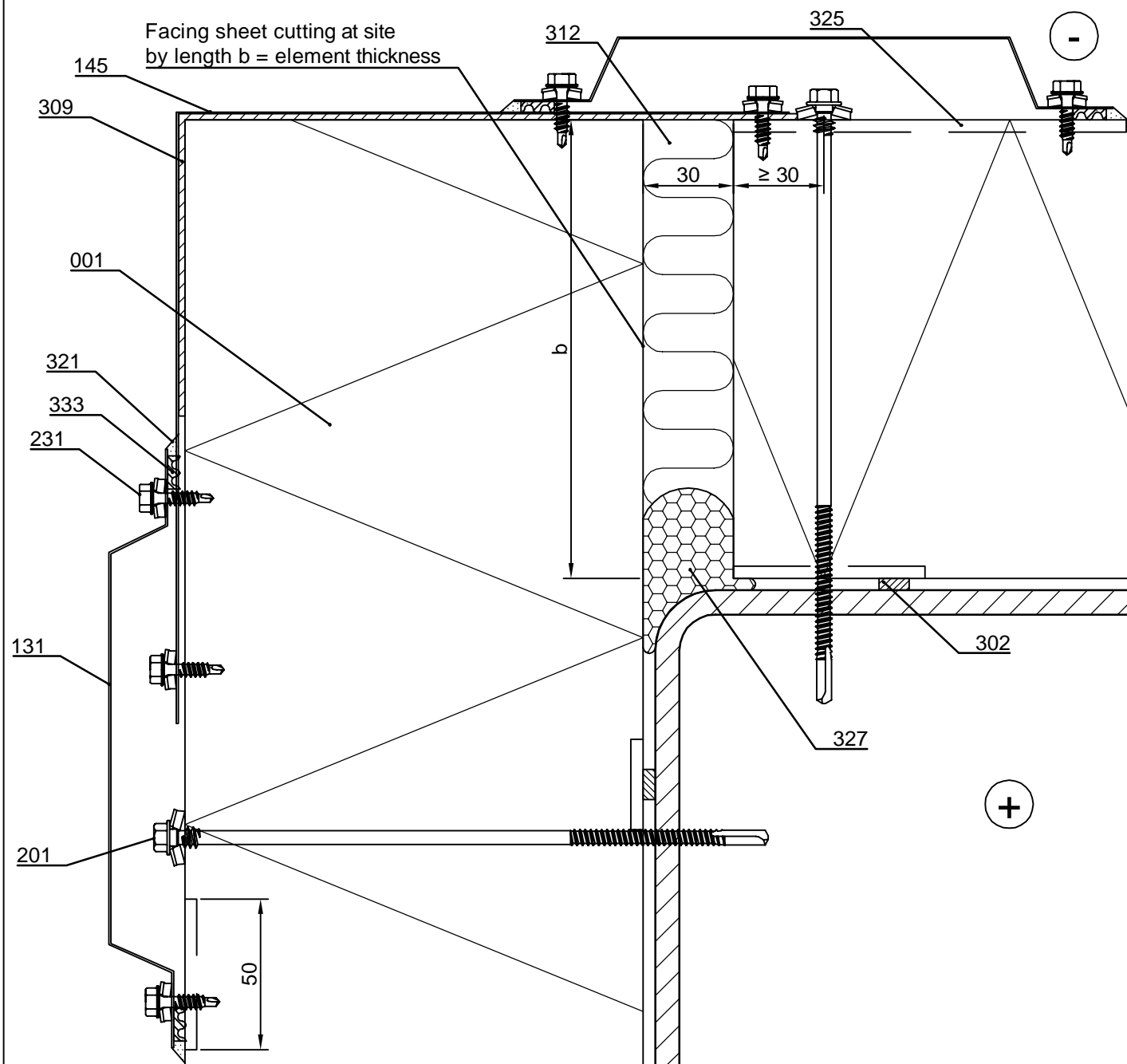
- ☐ 001. Ruukki ® Patina Panel
- ☐ 141. /EA1EC15-16/ COR-TEN external corner flashing
- ☐ 201. Self-drilling element screw, washer with sealing *
- ☐ 231. Flashing fastener, washer with sealing *
- ☐ 302. /EA3SS410/ Sealing strip
- ☐ 309. /EA3JSC30025/ Ruukki joint sealing tape
- ☐ 312. /EAWS___/ Mineral wool
- ☐ 321. /EA3SM310___/ Elastic sealant mastic

- ☐ 325. /EA3SM310___/ Elastic sealant during inst. to outer female groove in length equivalent to vertical joint flashing width and inner female groove in length of sealing
- ☐ 327. Elastic polyurethane foam
- ☐ 333. /CA3SE410/ Separating strip EPDM

☒ Ruukki's delivery

*Fastener material stainless steel

Date 15.05.2025	Rev. date	Work nr.	Drawing nr. SPAC04-2E-EN
Drawn by Ruukki	Rev.		
Scale 1:2	Building		File nr.



- ☐ 001. Ruukki ® Patina Panel
- ☐ 131. /EA1JV12/ COR-TEN external corner flashing
- ☐ 145. /EA1EC10-_/External corner flashing, t = 1 / 1.2 mm
- ☐ 201. Self-drilling element screw, washer with sealing *
- ☐ 231. Flashing fastener, washer with sealing *
- ☐ 302. /EA3SS410/ Sealing strip
- ☐ 309. /EA3JSC30025/ Ruukki joint sealing tape
- ☐ 312. /EAWS___/ Mineral wool

- ☐ 321. /EA3SM310___/ Elastic sealant mastic
- ☐ 325. /EA3SM310___/ Elastic sealant during inst. to outer female groove in length equivalent to vertical joint flashing width and inner female groove in length of sealing
- ☐ 327. Elastic polyurethane foam
- ☐ 333. /CA3SE410/ Separating strip EPDM

☒ Ruukki's delivery

*Fastener material stainless steel



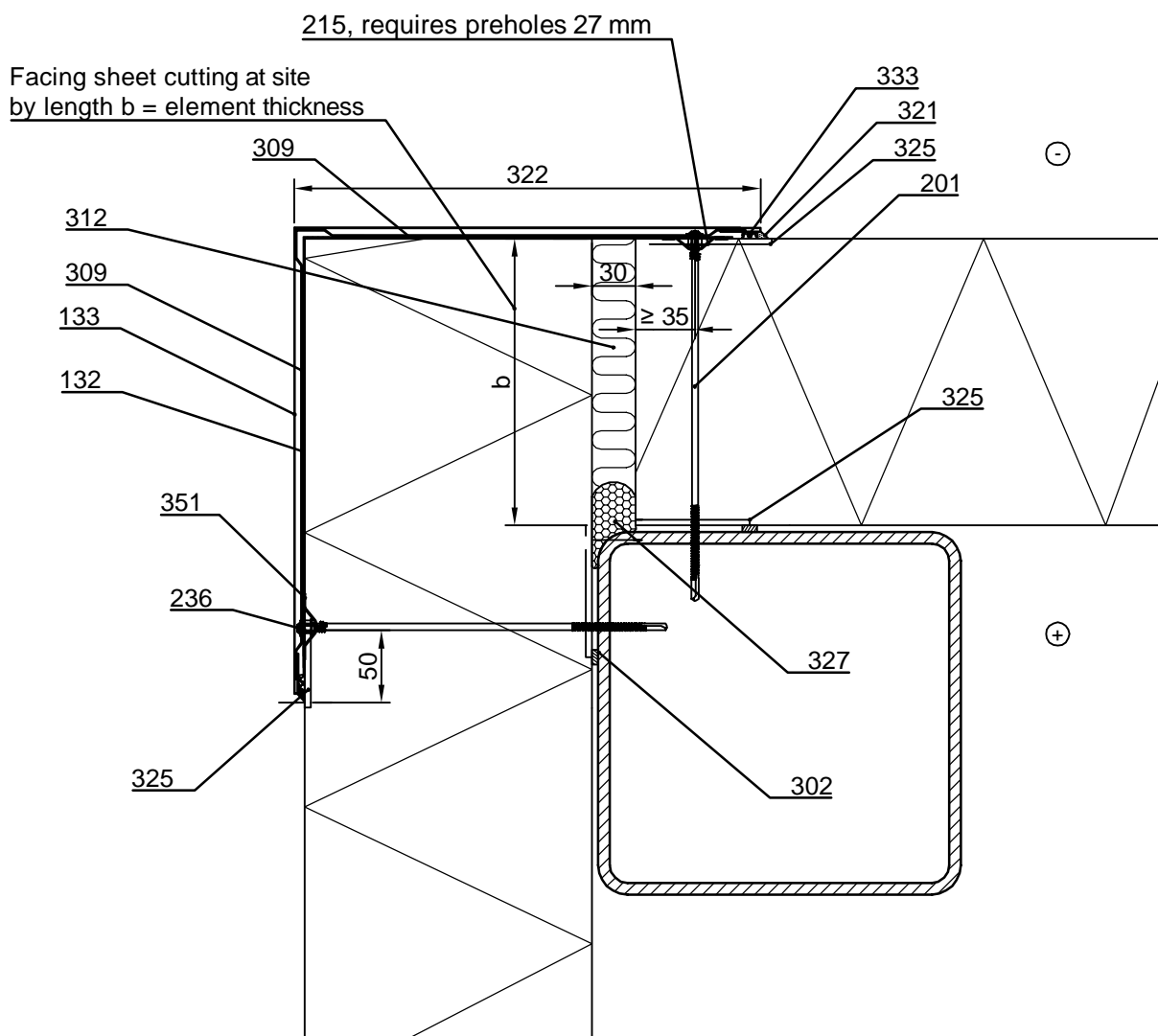
Contents of drawing

Ruukki ® Patina Panel
Horizontal installation
Outer corner, horizontal section, Invisible

Date 15.05.2025	Rev. date	Work nr.	Drawing nr. SPAC04-30E-EN
Drawn by Ruukki	Rev.		
Scale 1:5	Building		File nr.

Note! Flashings 132 and 133 to be use in all panels < 230mm.

Sealing band 309 should reach all the way with flashing 132.



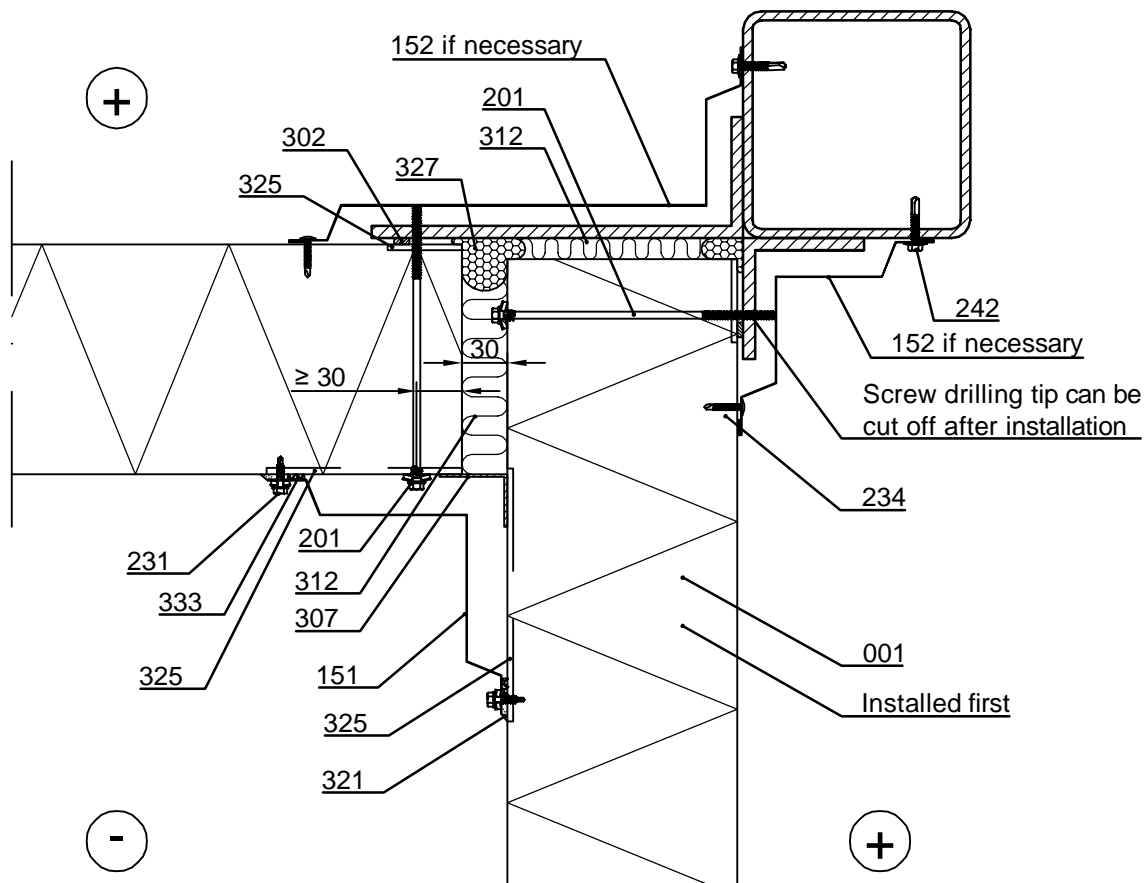
- | | |
|--|---|
| <input type="checkbox"/> 001. Ruukki ® Patina Panel | <input type="checkbox"/> 312. /EAWS___/ Mineral wool |
| <input type="checkbox"/> 132. /EA1EXB4/ Corner bottom flashing invisible | <input type="checkbox"/> 325. /EA3SM310___/ Elastic sealant during inst. |
| <input type="checkbox"/> 133. /EA1ECI/ COR-TEN corner flashing invisible | <input type="checkbox"/> to outer female groove in length equivalent to vertical joint flashing width and inner female groove in length of sealing. |
| <input type="checkbox"/> 201. Self-drilling element screw, washer with sealing * | <input type="checkbox"/> 327. Elastic polyurethane foam |
| <input type="checkbox"/> 215. /EA2W40-910S/ Countersink washer * | <input type="checkbox"/> 333. /CA3SE410/ Separating strip EPDM |
| <input type="checkbox"/> 236. Flat head flashing fastener * | <input type="checkbox"/> 351. /EA2R0S/ Sealing EPDM Round 426 100 |
| <input type="checkbox"/> 302. /EA3SS410/ Sealing strip | |
| <input type="checkbox"/> 309. /EA3JS30025/ Ruukki joint sealing tape | |

☒ Ruukki's delivery

*Fastener material stainless steel

Copyright © Ruukki Construction Oy. Allowed only for designs with Ruukki's products.

Date 15.05.2025	Rev. date	Work nr.	Drawing nr. SPAC05-1E-EN
Drawn by Ruukki	Rev.		
Scale 1:5	Building		File nr.

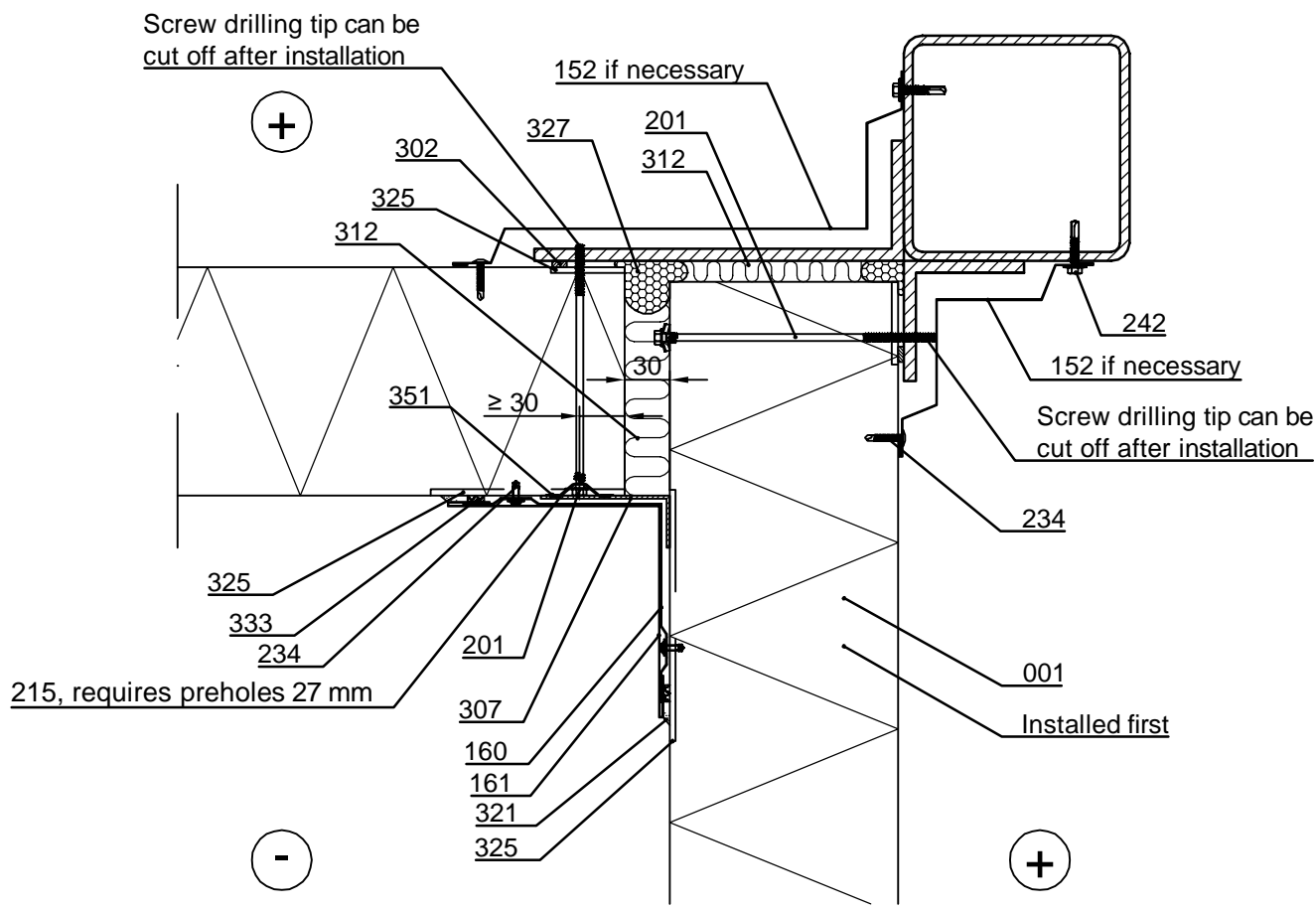


- ☐ 001. Ruukki ® Patina Panel
- ☐ 151. /EA1IC14/ COR-TEN internal corner flashing
- ☐ 152. Internal corner flashing, t = 0.6 mm, according to project
- ☐ 201. Self-drilling element screw, washer with sealing *
- ☐ 231. Flashing fastener, washer with sealing *
- ☐ 234. Flat head flashing fastener
- ☐ 242. Fastener screw, without washer
- ☐ 302. /EA3SS410/ Sealing strip
- ☐ 307. /EA3JS7525/ Ruukki joint sealing tape
- ☐ 312. /EAWS___/ Mineral wool band
- ☐ 321. /EA3SM310___/ Elastic sealant mastic
- ☐ 325. /EA3SM310___/ Elastic sealant during installation to outer female groove in length equivalent to vertical joint flashing width and inner female groove in length of sealing
- ☐ 327. Elastic polyurethane foam
- ☐ 333. /CA3SE410/ Separating strip EPDM

☒ Ruukki's delivery

*Fastener material stainless steel

Date 15.05.2025	Rev. date	Work nr.	Drawing nr. SPAC05-30E-EN
Drawn by Ruukki	Rev.		
Scale 1:5	Building		File nr.

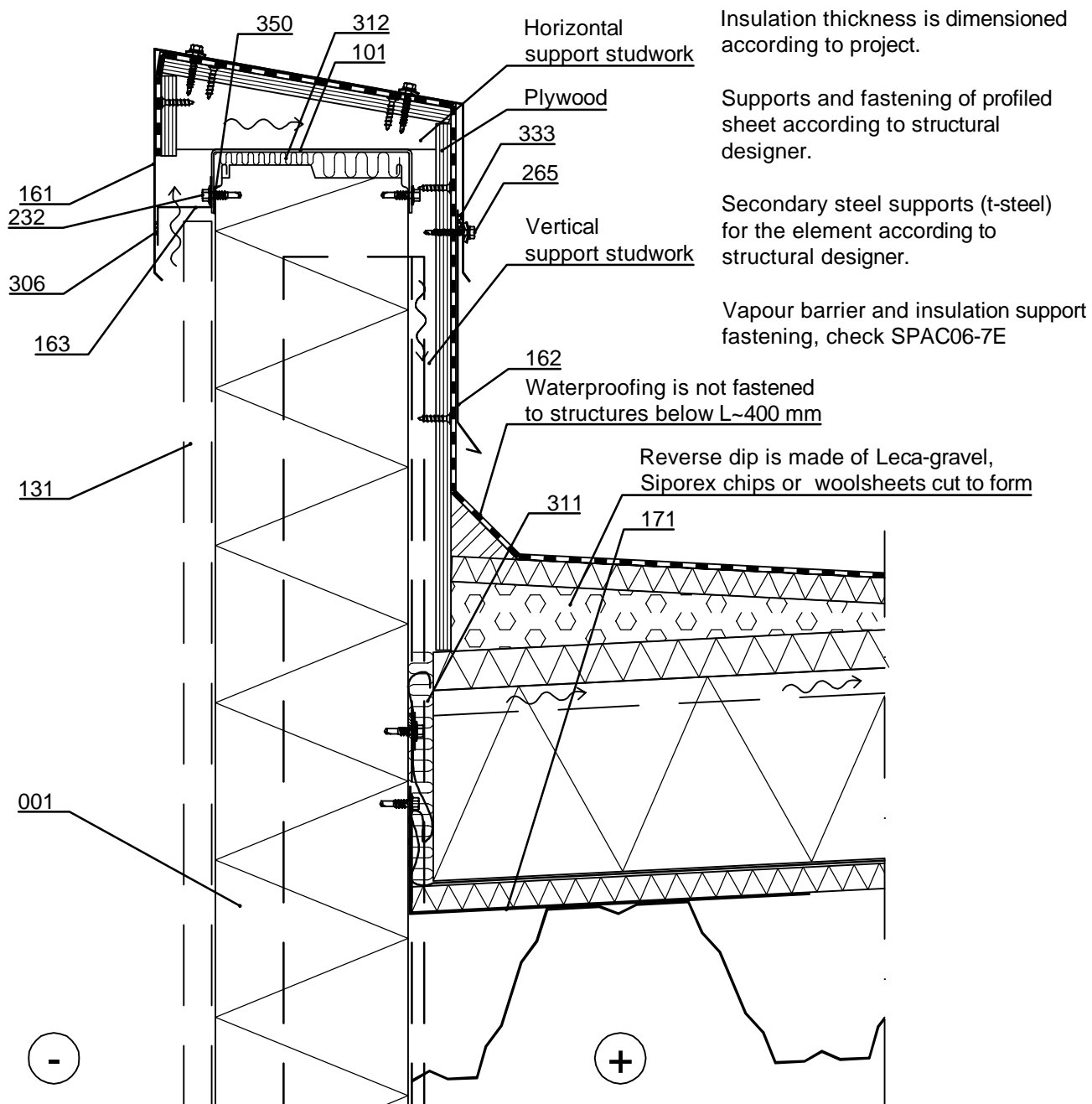


- ☐ 001. Ruukki ® Patina Panel
- ☐ 161. /EA1JVI/ COR-TEN internal corner flashing invisible
- ☐ 160. /EA1IXBI/ Internal bottom flashing invisible
- ☐ 152. Internal corner flashing, t = 0.6 mm, according to project
- ☐ 201. Self-drilling element screw, washer with sealing *
- ☐ 215. /EA2W40-910S/ Countersink washer *
- ☐ 231. Flashing fastener, washer with sealing *
- ☐ 234. Flat head flashing fastener
- ☐ 242. Fastener screw, without washer
- ☐ 302. /EA3SS410/ Sealing strip
- ☐ 307. /EA3JSN7525/ Joint sealing
- ☐ 312. /EAWS___/ Mineral wool
- ☐ 325. /EA3SM310___/ Elastic sealant during installation to outer female groove to length equivalent to vertical joint flashing width and inner female groove in length of sealing
- ☐ 327. Elastic polyurethane foam
- ☐ 333. /CA3SE410/ Separating strip EPDM
- ☐ 350. /EA3PVCT25/ PVC tape (between bottom flashing and panel)
- ☐ 351. /EA2R0S/ Sealing EPDM Round 426 100

☒ Ruukki's delivery

*Fastener material stainless steel

Date	15.05.2025	Rev. date		Work nr.		Drawing nr.	SPAC06-1E-EN
Drawn by	Ruukki	Rev.					
Scale	1:5	Building				File nr.	

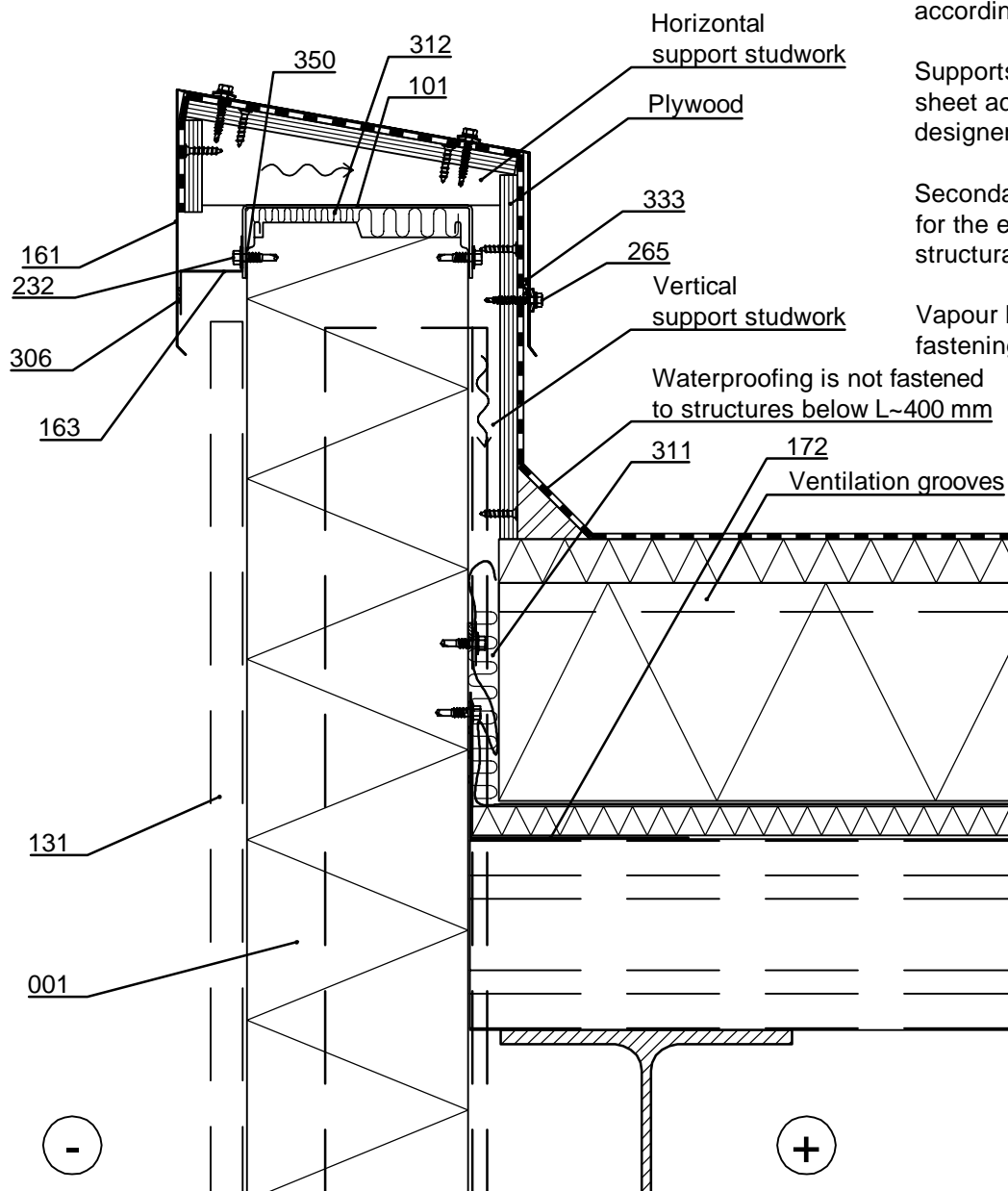


- | | |
|---|---|
| <input type="checkbox"/> 001. Ruukki ® Patina Panel | <input type="checkbox"/> 232. Flashing fastener*, without washer |
| <input type="checkbox"/> 101. /EA1EPF___/ Eave purlin | <input type="checkbox"/> 265. Fastener screw to wood, washer with sealing * |
| <input type="checkbox"/> 131. /EA1JV12/ COR-TEN vertical joint flashing | <input type="checkbox"/> 306. ISO-BUTYL self adhesive tape 2x10 mm |
| <input type="checkbox"/> 161. COR-TEN eave flashing, t = 0.7 mm, acc. to project | <input type="checkbox"/> 311. Mineral wool |
| <input type="checkbox"/> 162. Cover flashing, t = 0.6 mm, according to project | <input type="checkbox"/> 312. /EAWS___/ Mineral wool |
| <input type="checkbox"/> 163. Perforated storm flashing, t = 0.6 mm, acc. to project | <input type="checkbox"/> 333. /CA3SE410/ Separating strip EPDM |
| <input type="checkbox"/> 171. Insulation support flashing, t = 0.6 mm, according to project | <input type="checkbox"/> 350. /EA3PVCT25/ PVC tape (between purlin and panel) |

☒ Ruukki's delivery

*Fastener material stainless steel

Date 15.05.2025	Rev. date	Work nr.	Drawing nr. SPAC06-2E-EN
Drawn by Ruukki	Rev.		
Scale 1:5	Building		File nr.



Insulation thickness is dimensioned according to project.

Supports and fastening of profiled sheet according to structural designer.

Secondary steel supports (t-steel) for the element according to structural designer.

Vapour barrier and insulation support fastening, see SPAC06-7E

Waterproofing is not fastened to structures below L~400 mm

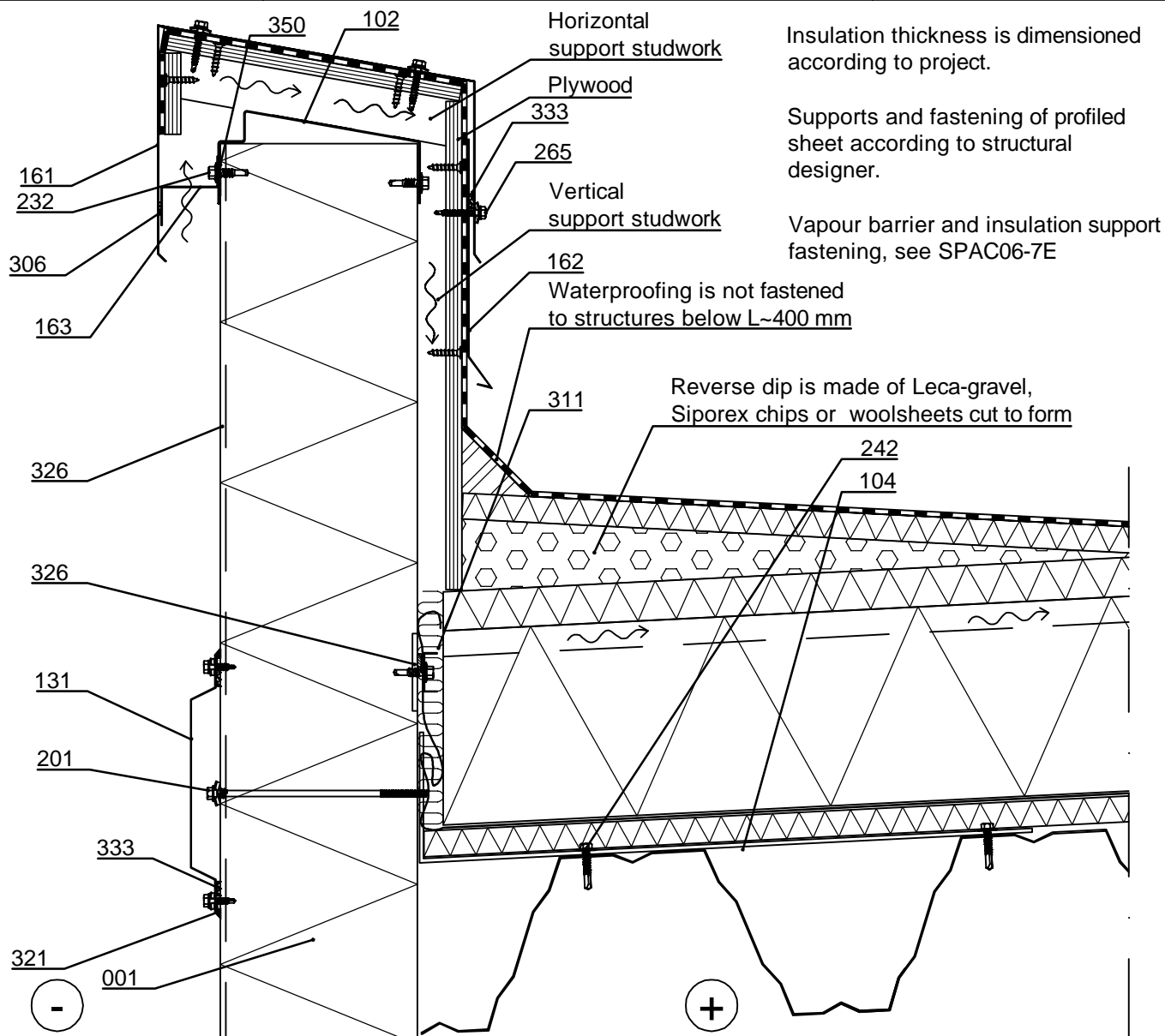
Ventilation grooves

- ☐ 001. Ruukki ® Patina Panel
- ☐ 101. /EA1EPF___/ Eave purlin
- ☐ 131. /EA1JV12/ COR-TEN vertical joint flashing
- ☐ 161. COR-TEN eave flashing, t = 0.7 mm, acc. to project
- ☐ 163. Perforated storm flashing, t = 0.6 mm, acc. to project
- ☐ 172. Insulation support flashing, t = 0.6 mm, acc. to project
- ☐ 232. Flashing fastener*, without washer
- ☐ 265. Fastener screw to wood, washer with sealing *
- ☐ 306. ISO-BUTYL self adhesive tape 2x10 mm
- ☐ 311. Mineral wool
- ☐ 312. /EAWS___/ Mineral wool
- ☐ 333. /CA3SE410/ Separating strip EPDM
- ☐ 350. /EA3PVCT25/ PVC tape (between purlin and panel)

☒ Ruukki's delivery

*Fastener material stainless steel

Date 15.05.2025	Rev. date	Work nr.	Drawing nr. SPAC06-3E-EN
Drawn by Ruukki	Rev.		
Scale 1:5	Building		File nr.

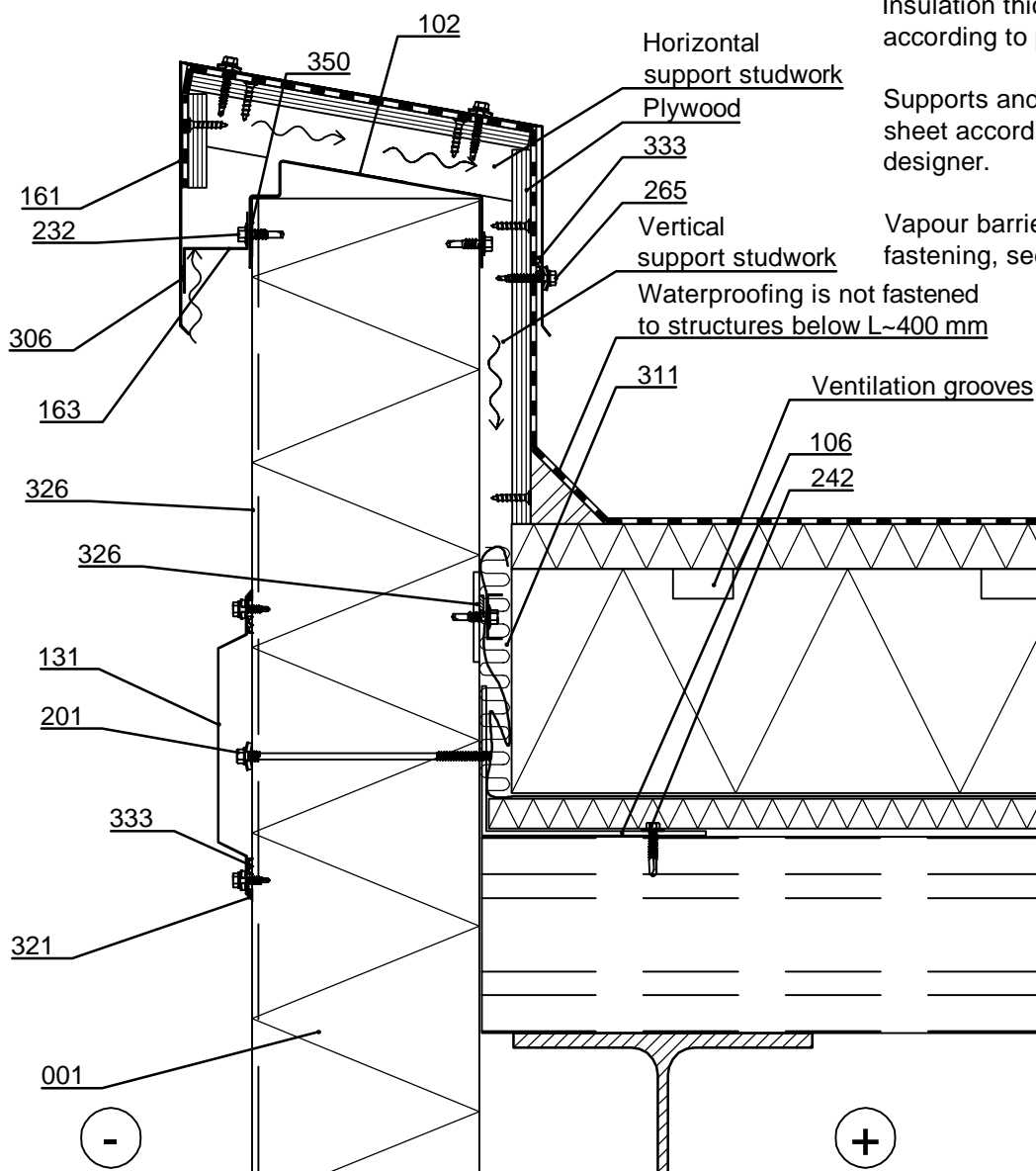


- | | |
|--|---|
| <input type="checkbox"/> 001. Ruukki® Patina Panel | <input type="checkbox"/> 242. Fastener screw, without washer |
| <input type="checkbox"/> 102. /EA1EP___/ Eave purlin | <input type="checkbox"/> 265. Fastener screw to wood, washer with sealing * |
| <input type="checkbox"/> 104. Flashing for fastening / insulation support flashing, t=3 mm, according to project | <input type="checkbox"/> 306. ISO-BUTYL self adhesive tape 2x10 mm |
| <input type="checkbox"/> 131. /EA1JV12/ COR-TEN vertical joint flashing | <input type="checkbox"/> 311. Mineral wool |
| <input type="checkbox"/> 161. COR-TEN Eave flashing, t = 0.6 mm, according to project | <input type="checkbox"/> 321. /EA3SM310___/ Elastic sealant mastic |
| <input type="checkbox"/> 162. Cover flashing, t = 0.6 mm, according to project | <input type="checkbox"/> 326. /EA3SM310___/ Elastic sealant during inst. to outer male groove full length of element and inner female groove 60 mm in length of element |
| <input type="checkbox"/> 163. Perforated storm flashing, t = 0.6 mm, acc. to project | <input type="checkbox"/> 333. /CA3SE410/ Separating strip EPDM |
| <input type="checkbox"/> 201. Self-drilling element screw, washer with sealing * | <input type="checkbox"/> 350. /EA3PVCT25/ PVC tape (between purlin and panel) |
| <input type="checkbox"/> 231. Flashing fastener, washer with sealing * | |
| <input type="checkbox"/> 232. Flashing fastener, without washer * | |

☒ Ruukki's delivery

*Fastener material stainless steel

Date 15.05.2025	Rev. date	Work nr.	Drawing nr. SPAC06-4E-EN
Drawn by Ruukki	Rev.		
Scale 1:5	Building		File nr.



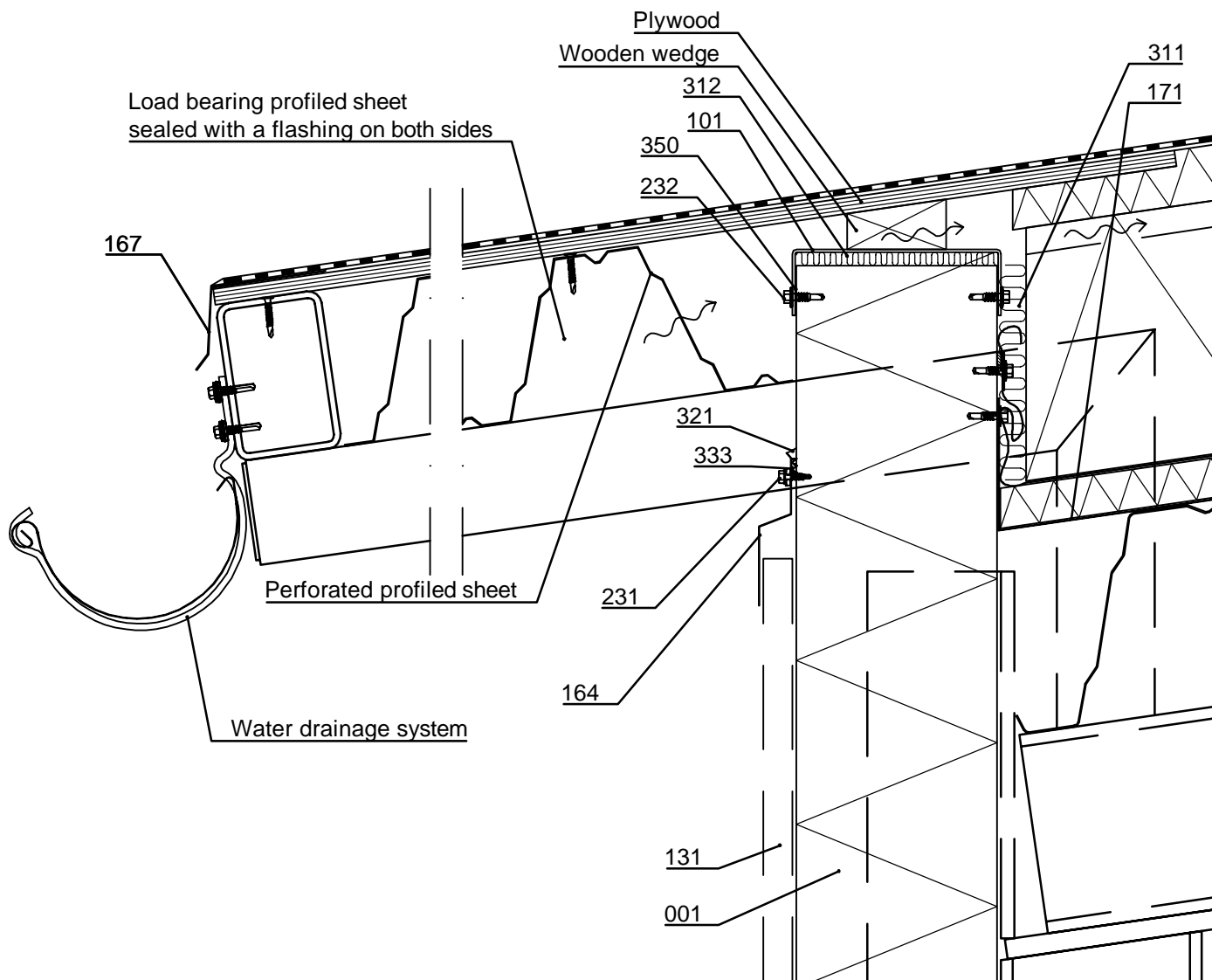
- ☐ 001. Ruukki® Patina Panel
- ☐ 102. /EA1EP___/ Eave purlin
- ☐ 106. Flashing for fastening / insulation support flashing, t=3 mm, according to project
- ☐ 131. /EA1JV12/ COR-TEN vertical joint flashing
- ☐ 161. COR-TEN Eave flashing, t = 0.6 mm, according to project
- ☐ 163. Storm flashing, t = 0.6 mm, according to project
- ☐ 201. Self-drilling element screw, washer with sealing *
- ☐ 231. Flashing fastener, washer with sealing *
- ☐ 232. Flashing fastener, without washer *

- ☐ 242. Fastener screw, without washer
- ☐ 265. Fastener screw to wood, washer with sealing *
- ☐ 306. ISO-BUTYL self adhesive tape 2x10 mm
- ☐ 311. Mineral wool
- ☐ 321. /EA3SM310___/ Elastic sealant mastic
- ☐ 326. /EA3SM310___/ Elastic sealant during inst. to outer male groove full length of element and inner female groove 60 mm in length of element
- ☐ 333. /CA3SE410/ Separating strip EPDM
- ☐ 350. /EA3PVCT25/ PVC tape (between purlin and panel)

☒ Ruukki's delivery

*Fastener material stainless steel

Date 15.05.2025	Rev. date	Work nr.	Drawing nr. SPAC06-5E-EN
Drawn by Ruukki	Rev.		
Scale 1:5	Building		File nr.



- ☐ 001. Ruukki® Patina Panel
- ☐ 101. /EA1EPF___/ Eave purlin
- ☐ 131. /EA1JV12/ COR-TEN vertical joint flashing
- ☐ 164. COR-TEN storm flashing, t = 0.7 mm, according to project
- ☐ 167. COR-TEN eave flashing, t = 0.7 mm, according to project
- ☐ 171. Insulation support flashing, t = 0.6 mm, according to project
- ☐ 231. Flashing fastener, washer with sealing *
- ☐ 232. Flashing fastener, without washer *
- ☐ 311. Mineral wool
- ☐ 312. /EAWS___/ Mineral wool
- ☐ 321. /EA3SM310___/ Elastic sealant mastic
- ☐ 333. /CA3SE410/ Separating strip EPDM
- ☐ 350. /EA3PVCT25/ PVC tape (between purlin and panel)

☒ Ruukki's delivery

*Fastener material stainless steel

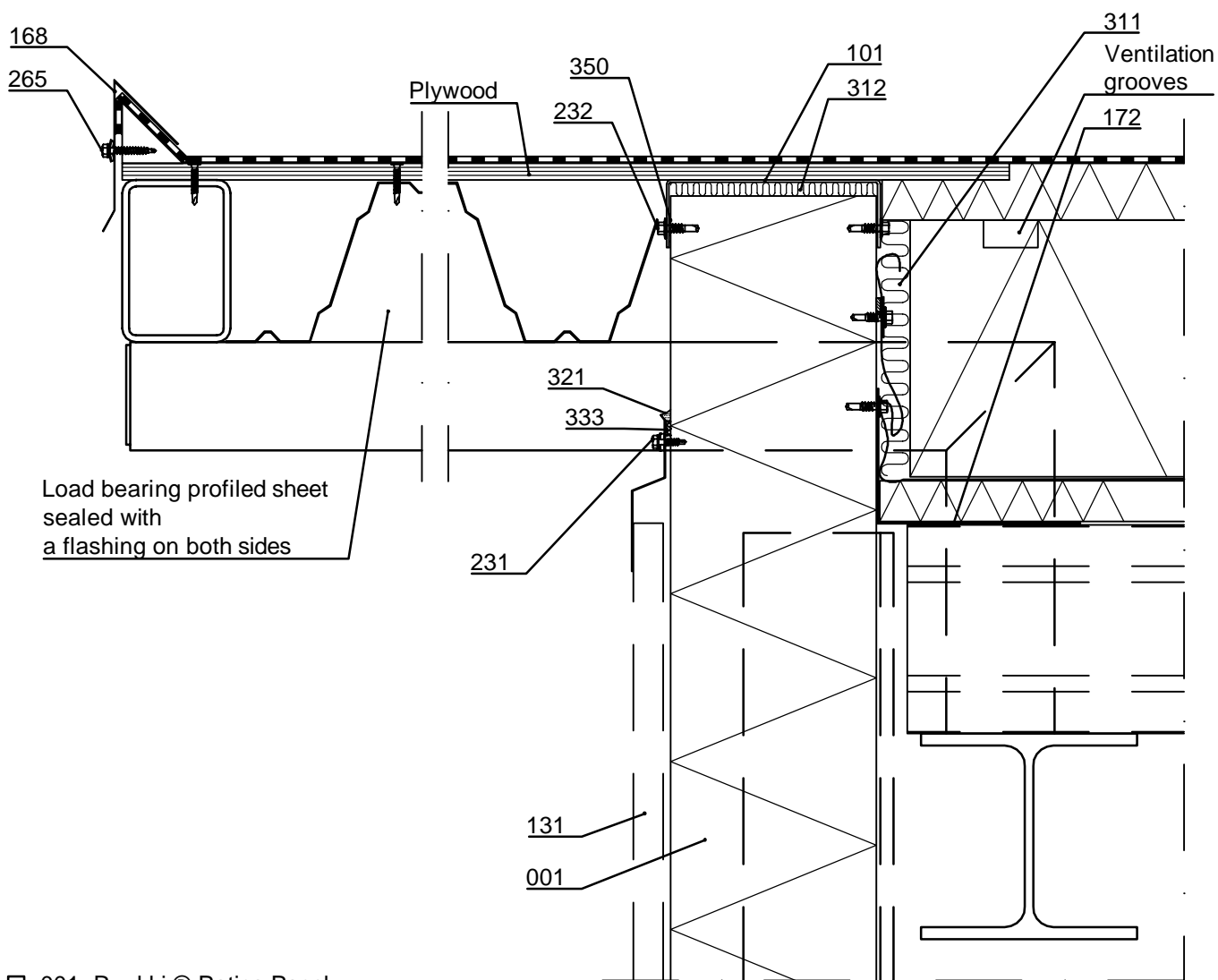
Insulation thickness is dimensioned according to project.

Supports and fastening of profiled sheet according to structural designer.

Element is cut at the point where it intersects with the steel structure. Vapour barrier is taped around the steel.

Vapour barrier and insulation support fastening, see SPAC06-7E

Date 15.05.2025	Rev. date	Work nr.	Drawing nr. SPAC06-6E-EN
Drawn by Ruukki	Rev.		
Scale 1:5	Building		File nr.



- ☐ 001. Ruukki® Patina Panel
- ☐ 101. /EA1EPF___/ Eave purlin
- ☐ 131. /EA1JV12/ COR-TEN vertical joint flashing
- ☐ 164. COR-TEN storm flashing, t = 0.7 mm, according to project
- ☐ 168. COR-TEN eave flashing, t = 0.7 mm, according to project
- ☐ 172. Insulation support flashing, t = 0.6 mm, according to project
- ☐ 231. Flashing fastener, washer with sealing *
- ☐ 232. Flashing fastener, without washer *
- ☐ 265. Fastener screw to wood, washer with sealing *
- ☐ 311. Mineral wool
- ☐ 312. /EAWS___/ Mineral wool
- ☐ 321. /EA3SM310___/ Elastic sealant mastic
- ☐ 333. /CA3SE410/ Separating strip EPDM
- ☐ 350. /EA3PVCT25/ PVC tape (between purlin and panel)

Insulation thickness is dimensioned according to project.

Supports and fastening of profiled sheet according to structural designer.

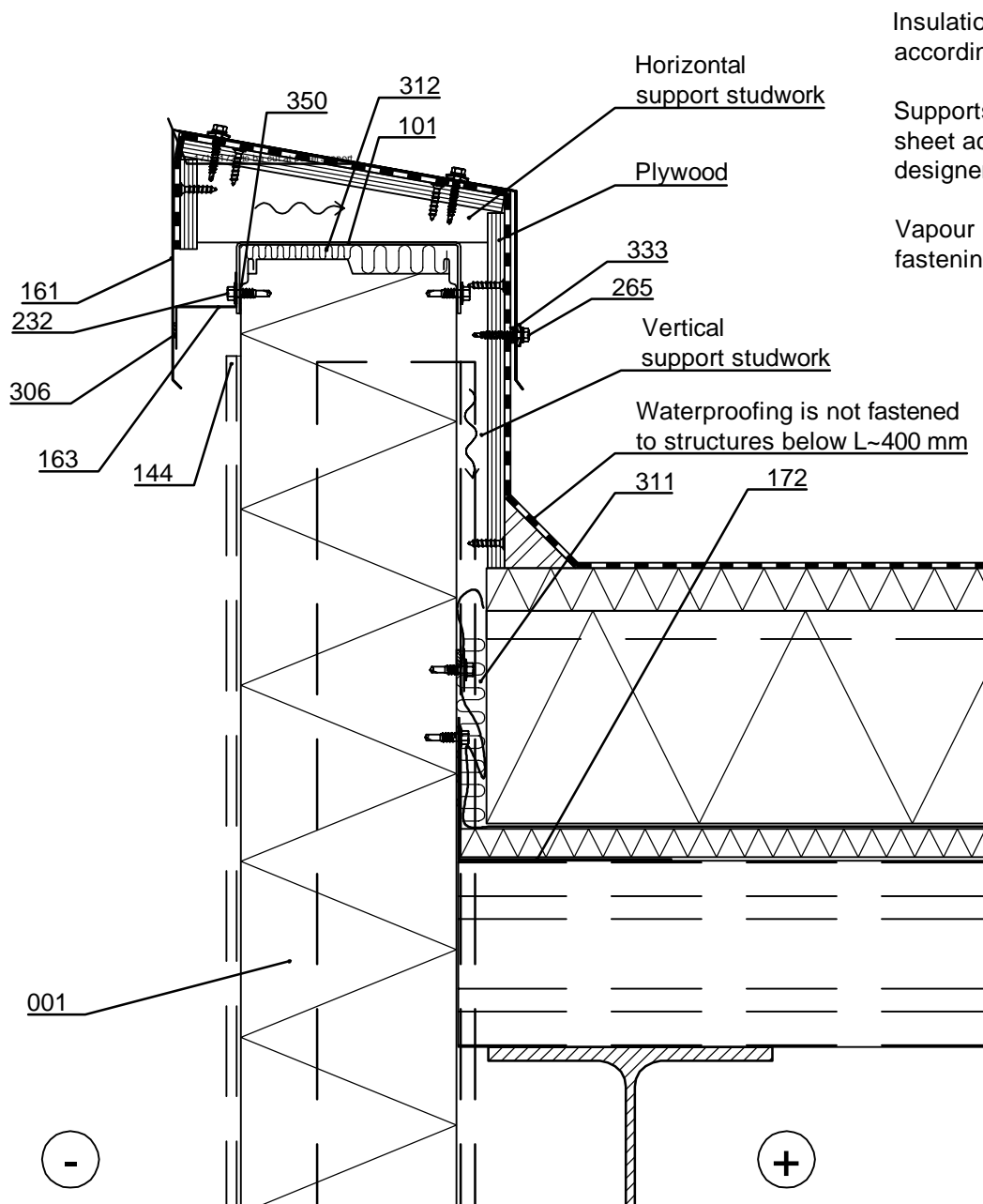
Element is cut at the point where it intersects with the steel structure. Vapour barrier is taped around the steel.

Vapour barrier and insulation support fastening, see SPAC06-7E

☒ Ruukki's delivery

*Fastener material stainless steel

Date 15.05.2025	Rev. date	Work nr.	Drawing nr. SPAC06-30E-EN
Drawn by Ruukki	Rev.		
Scale 1:5	Building		File nr.



Insulation thickness is dimensioned according to project.

Supports and fastening of profiled sheet according to structural designer.

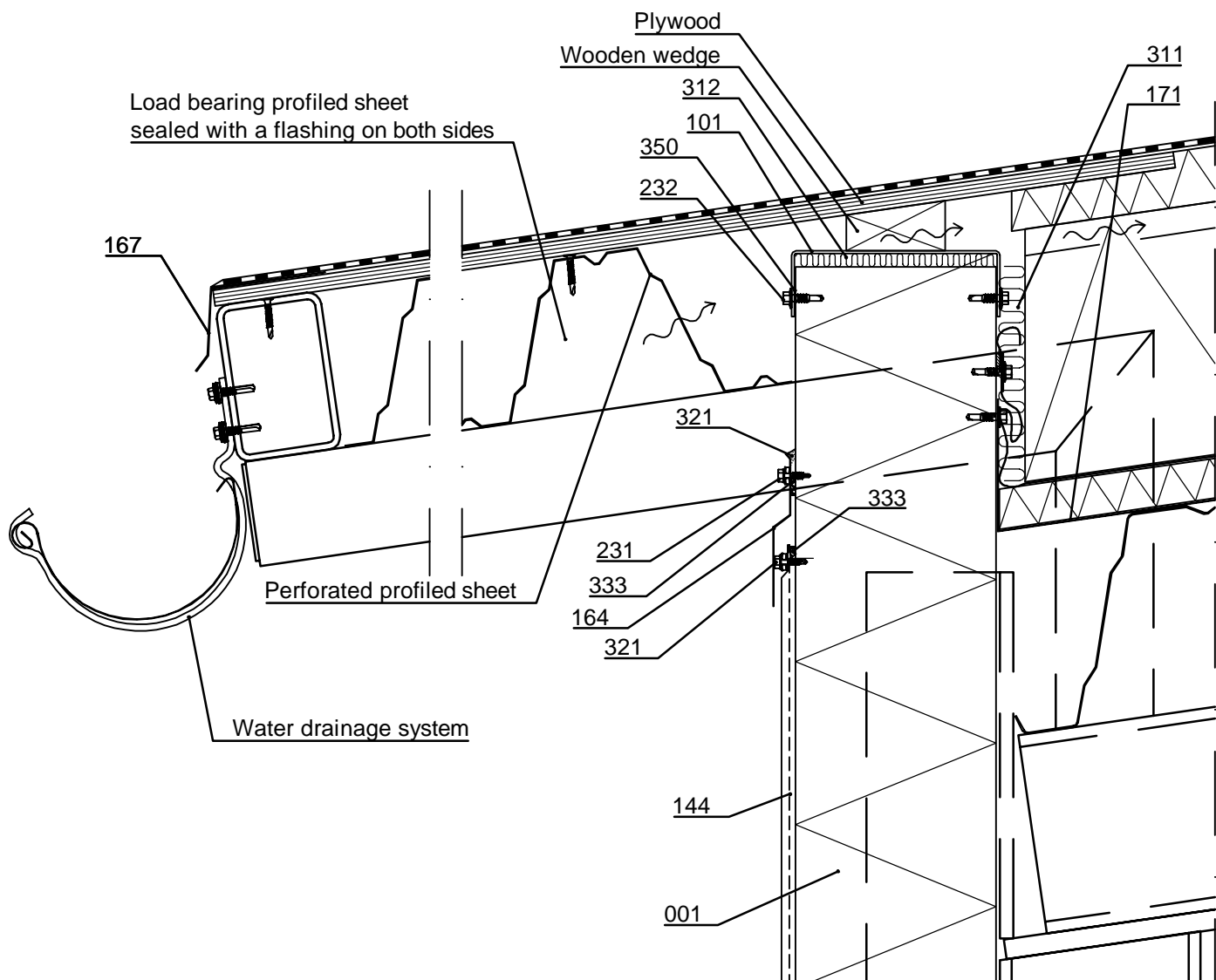
Vapour barrier and insulation support fastening, see SPAC06-7E

- ☐ 001. Ruukki® Patina Panel
- ☐ 101. /EA1EPF___/ Eave purlin
- ☐ 144. /EA1JVI/ COR-TEN vertical flashing invisible
- ☐ 161. COR-TEN eave flashing, t = 0.6 mm, acc. to project
- ☐ 163. COR-TEN storm flashing, t = 0.6 mm, acc. to project
- ☐ 172. Insulation support flashing, t = 0.6 mm, acc. to project
- ☐ 232. Flashing fastener, without washer *
- ☐ 265. Fastener screw to wood, washer with sealing *
- ☐ 306. ISO-BUTYL self adhesive tape 2x10 mm
- ☐ 311. Mineral wool
- ☐ 312. /EAWS___/ Mineral wool
- ☐ 333. /CA3SE410/ Separating strip EPDM
- ☐ 350. /EA3PVCT25/ PVC tape (between purlin and panel)

☒ Ruukki's delivery

*Stainless steel fastener

Date 15.05.2025	Rev. date	Work nr.	Drawing nr. SPAC06-31E-EN
Drawn by Ruukki	Rev.		
Scale 1:5	Building	File nr.	



- ☐ 001. Ruukki ® Patina Panel
- ☐ 101. /EA1EPF___/ Eave purlin
- ☐ 144. /EA1JVI/ COR-TEN vertical flashing invisible
- ☐ 164. COR-TEN storm flashing, t = 0.7 mm, according to project
- ☐ 167. COR-TEN eave flashing, t = 0.7 mm, according to project
- ☐ 171. Insulation support flashing, t = 0.6 mm, according to project
- ☐ 231. Flashing fastener, washer with sealing*
- ☐ 232. Flashing fastener, without washer *
- ☐ 311. Mineral wool
- ☐ 312. /EAWS___/ Mineral wool
- ☐ 321. /EA3SM310___/ Elastic sealant mastic
- ☐ 333. /CA3SE410/ Separating strip EPDM
- ☐ 350. /EA3PVCT25/ PVC tape (between purlin and panel)

☒ Ruukki's delivery

*Stainless steel fastener

Insulation thickness is dimensioned according to project.

Supports and fastening of profiled sheet according to structural designer.

Element is cut at the point where it intersects with the steel structure. Vapour barrier is taped around the steel.

Vapour barrier and insulation support fastening, see SPAC06-7E



Contents of drawing

Ruukki ® Patina Panel
Horizontal installation
Window, vertical section

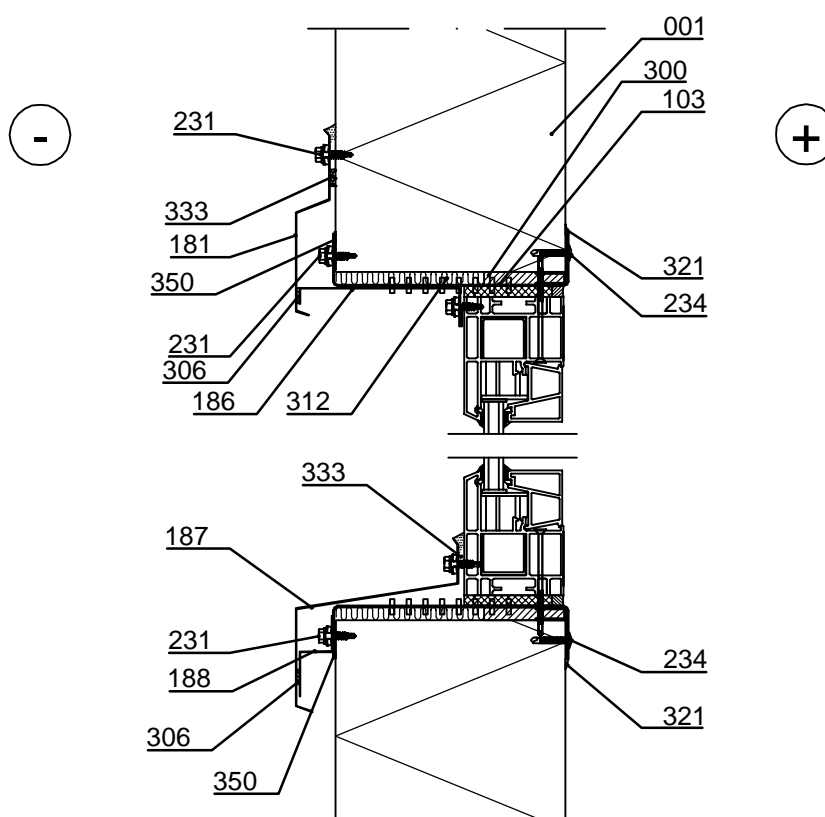
Date 15.05.2025	Rev. date	Work nr.	Drawing nr. SPAC07-1E-EN
Drawn by Ruukki	Rev.		
Scale 1:5	Building		File nr.

Note! Openings must be taken into account in dimensioning of elements.

Note! When thermal purlin (window purlin, for example) is used around the opening, the thermal holes of the purlin must be sealed with tape (aluminium tape, for example) from the inside of the purlin to ensure tightness of the purlin.

Note! Remember to seal the grooves of the elements joining the window during the installation with elastic sealant to outer female groove to length equivalent to vertical joint flashing width).

Supporting structures, if necessary, according to structural designer .



- | | |
|--|--|
| <input type="checkbox"/> 001. Ruukki ® Patina Panel | <input type="checkbox"/> 300. /EA3SWE54318/ Expandable sealing band (plastic side facing inside) |
| <input type="checkbox"/> 103. /EA1W___/ Window purlin | <input type="checkbox"/> 306. ISO-BUTYL self adhesive tape 2x10 mm |
| <input type="checkbox"/> 181. COR-TEN drip flashing, t = 0.7 mm, acc. to project | <input type="checkbox"/> 312. /EAWS___/ Mineral wool |
| <input type="checkbox"/> 186. Support- / cover flashing, t = 0.6 mm, acc. to project | <input type="checkbox"/> 321. /EA3SM310___/ Elastic sealant mastic |
| <input type="checkbox"/> 187. COR-TEN external window sill, t=0.7 mm | <input type="checkbox"/> 333. /CA3SE410/ Separating strip EPDM |
| <input type="checkbox"/> 188. Support- / cover flashing, t = 0.6 mm, acc. to project | <input type="checkbox"/> 350. /EA3PVCT25/ PVC tape (between purlin and panel) |
| <input type="checkbox"/> 231. Flashing fastener, washer with sealing * | |
| <input type="checkbox"/> 234. Flat head flashing fastener | |

☒ Ruukki's delivery

*Fastener material stainless steel

Ruukki ® Patina Panel
Horizontal installation
Window, horizontal section

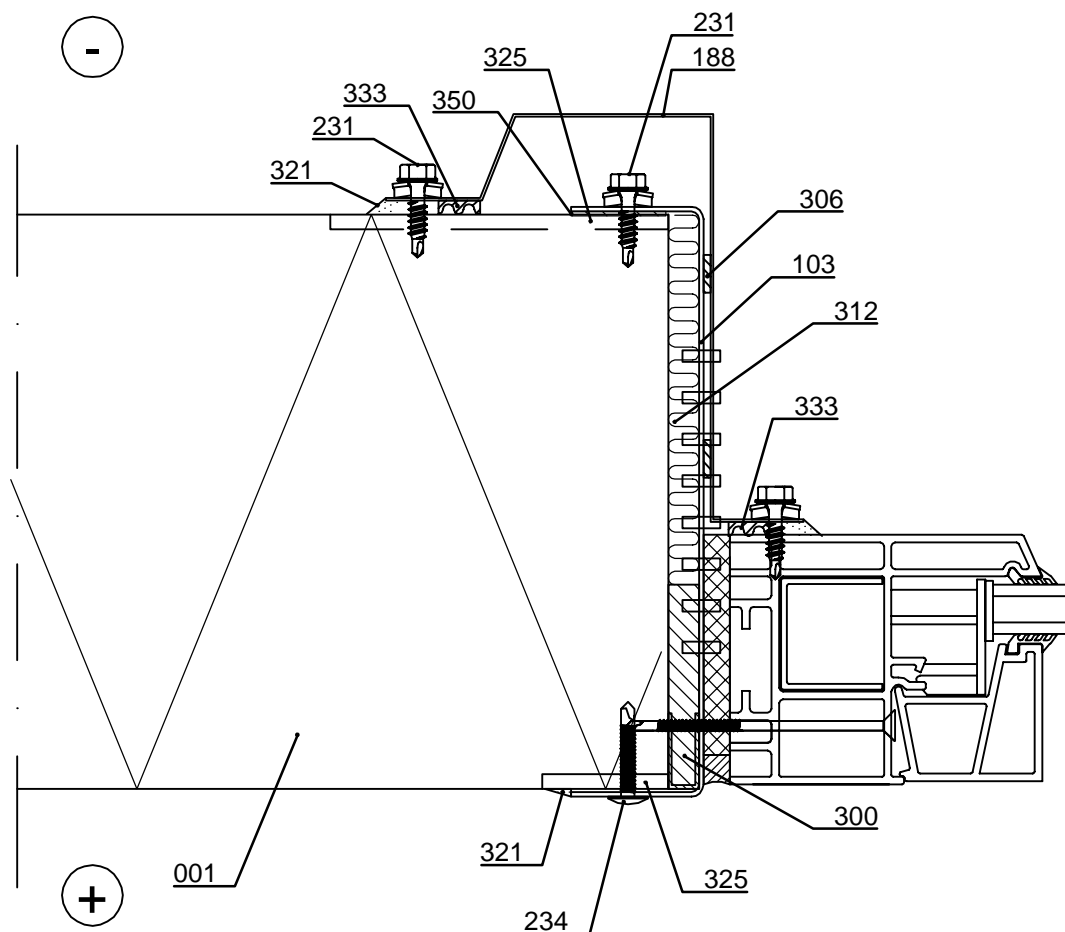
Date 15.05.2025	Rev. date	Work nr.	Drawing nr. SPAC07-2E-EN
Drawn by Ruukki	Rev.		
Scale 1:2	Building	File nr.	

Note! Openings must be taken into account in dimensioning of elements.

Note! When thermal purlin (window purlin, for example) is used around the opening, the thermal holes of the purlin must be sealed with tape (aluminium tape, for example) from the inside of the purlin to ensure tightness of the purlin.

Note! Remember to seal the grooves of the elements joining the window during the installation with elastic sealant to outer female groove to length equivalent to vertical joint flashing width.

Supporting structures, if necessary, according to structural designer.



- | | |
|---|--|
| <input type="checkbox"/> 001. Ruukki ® Patina Panel | <input type="checkbox"/> 312. /EAWS___/ Mineral wool |
| <input type="checkbox"/> 103. /EA1W___/ Window purlin | <input type="checkbox"/> 321. /EA3SM310___/ Elastic sealant mastic |
| <input type="checkbox"/> 188. COR-TEN cover flashing, t = 0.7 mm, acc. to project | <input type="checkbox"/> 325. /EA3SM310___/ Elastic sealant during inst. |
| <input type="checkbox"/> 231. Flashing fastener, washer with sealing * | to outer and inner female grooves |
| <input type="checkbox"/> 234. Flat head flashing fastener | <input type="checkbox"/> 333. /CA3SE410/ Separating strip EPDM |
| <input type="checkbox"/> 300. /EA3SWE54318/ Expandable sealing band | <input type="checkbox"/> 350. /EA3PVCT25/ PVC tape |
| (plastic side facing inside) | (between purlin and panel) |
| <input type="checkbox"/> 306. ISO-BUTYL self adhesive tape 2x10 mm | |

☒ Ruukki's delivery

*Fastener material stainless steel



Contents of drawing

Ruukki ® Patina Panel, horizontal installation
system window, vertical section,
large window, supporting structure

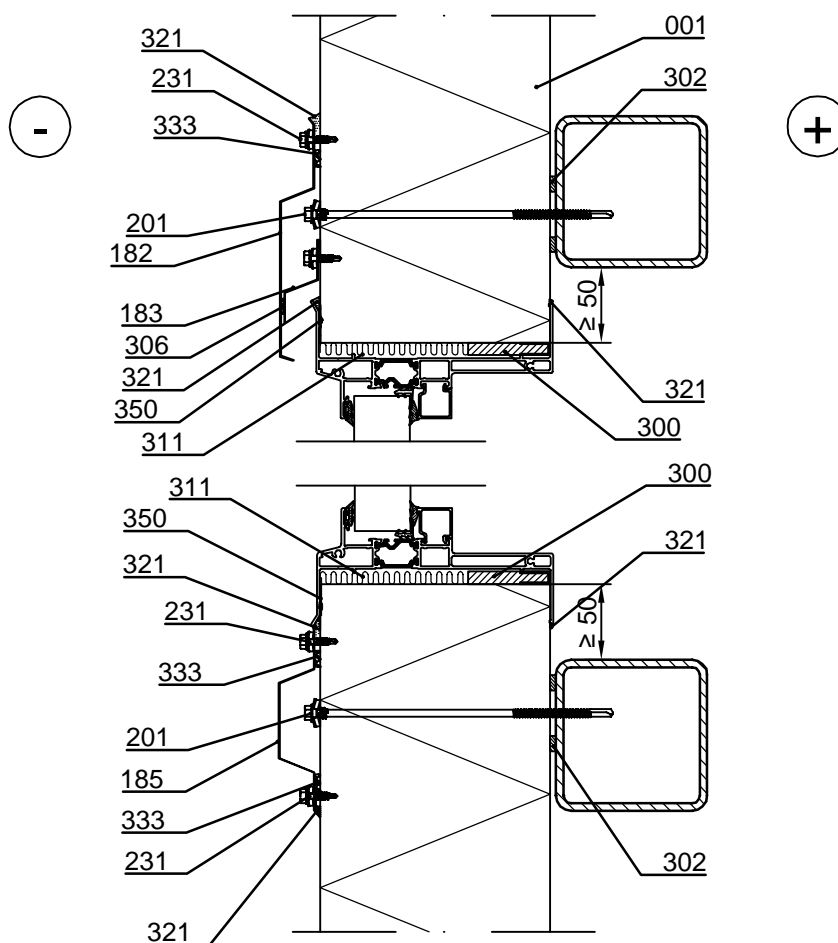
Date 15.05.2025	Rev. date	Work nr.	Drawing nr. SPAC07-3E-EN
Drawn by Ruukki	Rev.		
Scale 1:5	Building		File nr.

Note! Openings must be taken into account in dimensioning of elements.

Note! System window is installed during installation of elements. Fastening according to window manufacturers instructions.

Note! Remember to seal the grooves of the elements joining the window during the installation with sealant to outer female groove to length equivalent to vertical joint flashing and inner female groove in length of sealing (SPAC02-1E).

Supporting structures according to structural designer.



- | | |
|---|--|
| <input type="checkbox"/> 001. Ruukki ® Patina Panel | <input type="checkbox"/> 302. /EA3SS410/ Sealing strip |
| <input type="checkbox"/> 182. COR-TEN drip flashing, t = 0.7 mm, acc. to project | <input type="checkbox"/> 306. ISO-BUTYL self adhesive tape 2x10 mm |
| <input type="checkbox"/> 183. Storm flashing, t = 0.6 mm, according to project | <input type="checkbox"/> 311. /EAWS___/ Mineral wool |
| <input type="checkbox"/> 185. COR-TEN cover flashing, t = 0.7 mm, acc. to project | <input type="checkbox"/> (included in window system delivery) |
| <input type="checkbox"/> 201. Self-drilling element screw, washer with sealing * | <input type="checkbox"/> 321. /EA3SM310___/ Elastic sealant mastic |
| <input type="checkbox"/> 231. Flashing fastener, washer with sealing * | <input type="checkbox"/> 333. /CA3SE410/ Separating strip EPDM |
| <input type="checkbox"/> 300. /EA3SWE54318/ Expandable sealing band | <input type="checkbox"/> 350. /EA3PVCT25/ PVC tape |
| (plastic side facing inside) | (between purlin and panel) |

☒ Ruukki's delivery

*Fastener material stainless steel

Copyright © Ruukki Construction Oy. Allowed only for designs with Ruukki's products.

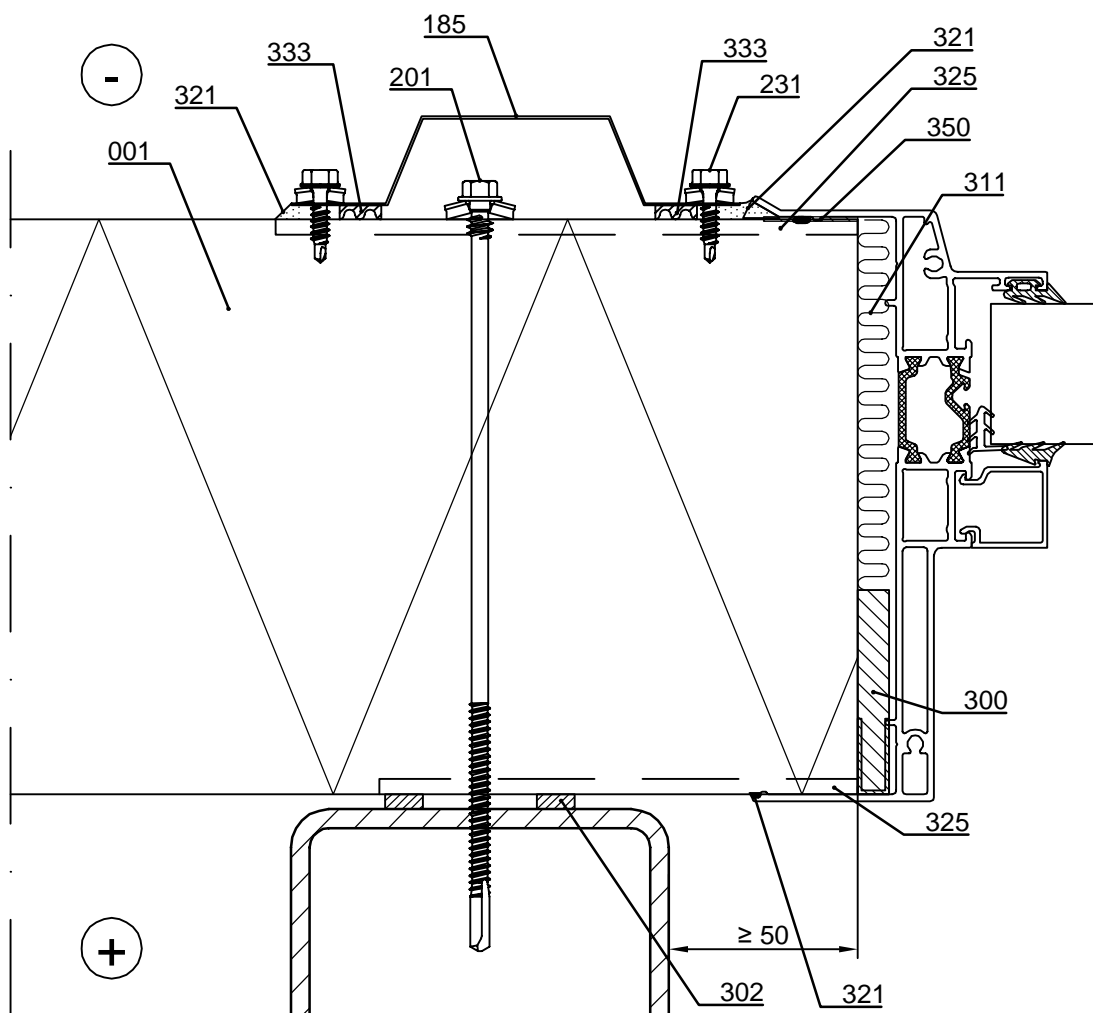
Date 15.05.2025	Rev. date	Work nr.	Drawing nr. SPAC07-4E-EN
Drawn by Ruukki	Rev.		
Scale 1:2	Building		File nr.

Note! Openings must be taken into account in dimensioning of elements.

Note! System window is installed during installation of elements. Fastening according to window manufacturers instructions.

Note! Remember to seal the grooves of the elements joining the window during the installation with sealant to outer female groove to length equivalent to vertical joint flashing and inner female groove in length of sealing (SPAC02-1E).

Supporting structures according to structural designer.



- ☐ 001. Ruukki ® Patina Panel
- ☐ 185. COR-TEN cover flashing, t = 0.7 mm, acc. to project
- ☐ 201. Self-drilling element screw, washer with sealing*
- ☐ 231. Flashing fastener, washer with sealing*
- ☐ 300. /EA3SWE54318/ Expandable sealing band (plastic side facing inside)
- ☐ 302. /EA3SS410/ Sealing strip
- ☐ 311. /EAWS___/ Mineral wool (included in window system delivery)
- ☐ 321. /EA3SM310___/ Elastic sealant mastic
- ☐ 325. /EA3SM310___/ Elastic sealant during inst. to outer and inner female grooves
- ☐ 333. /CA3SE410/ Separating strip EPDM
- ☐ 350. /EA3PVCT25/ PVC tape (between purlin and panel)

☒ Ruukki's delivery

*Fastener material stainless steel



Contents of drawing

Ruukki ® Patina Panel
Horizontal installation
Window, horizontal section, Invisible

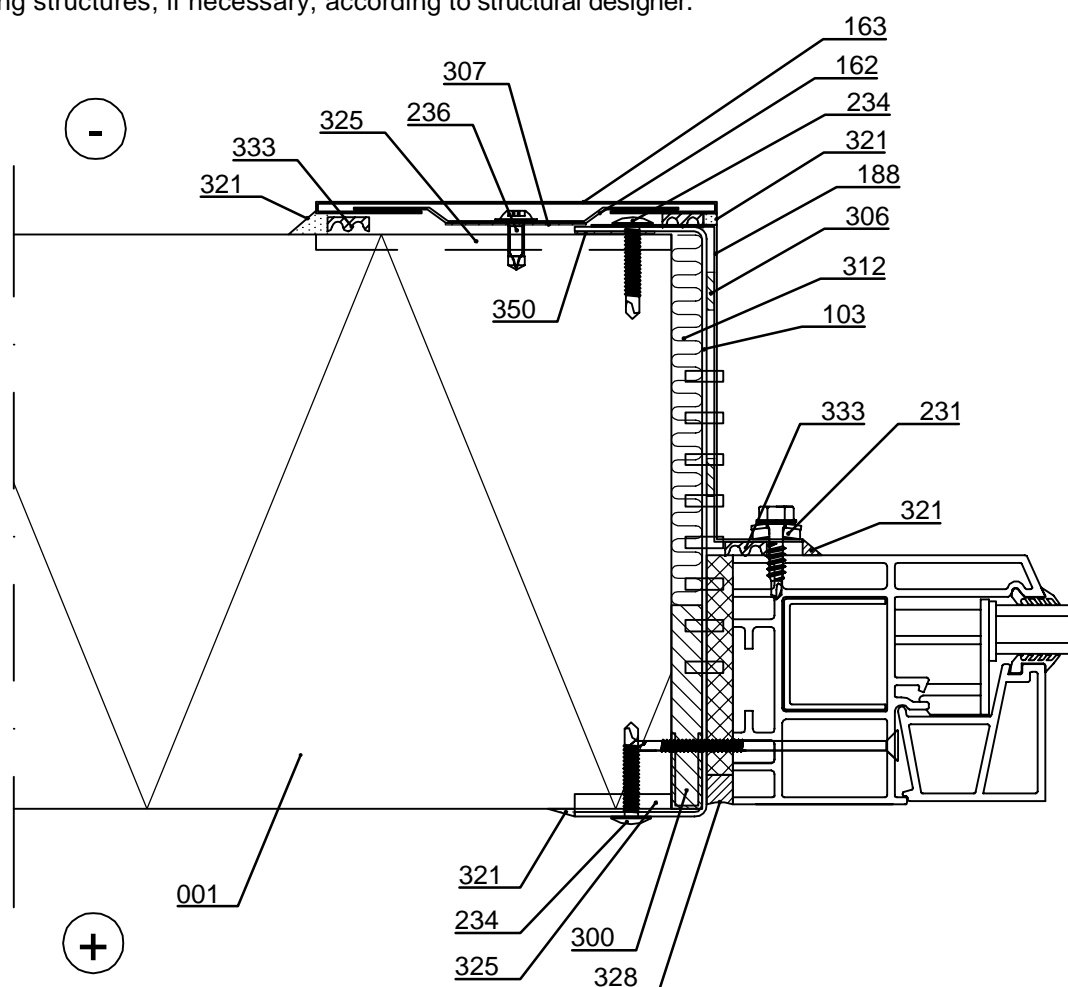
Date 15.05.2025	Rev. date	Work nr.	Drawing nr. SPAC07-30E-EN
Drawn by Ruukki	Rev.		
Scale 1:2	Building		File nr.

Note! Openings must be taken into account in dimensioning of elements.

Note! When thermal purlin (window purlin, for example) is used around the opening, the thermal holes of the purlin must be sealed with tape (aluminium tape, for example) from the inside of the purlin to ensure tightness of the purlin.

Note! Remember to seal the grooves of the elements joining the window during the installation with elastic sealant to outer female groove to length equivalent to vertical joint flashing width.

Supporting structures, if necessary, according to structural designer.



- | | |
|---|--|
| <input type="checkbox"/> 001. Ruukki ® Patina Panel | <input type="checkbox"/> 306. ISO-BUTYL self adhesive tape 2x10 mm |
| <input type="checkbox"/> 103. /EA1W___/ Window purlin | <input type="checkbox"/> 307. /EA3JS7525/ Ruukki joint sealing tape |
| <input type="checkbox"/> 162. COR-TEN Window bottom flashing Invisible | <input type="checkbox"/> 312. /EAWS___/ Mineral wool |
| <input type="checkbox"/> 163. COR-TEN Window flashing Invisible | <input type="checkbox"/> 321. /EA3SM310___/ Elastic sealant mastic |
| <input type="checkbox"/> 188. COR-TEN cover flashing, t = 0.7 mm, acc. to project | <input type="checkbox"/> 325. /EA3SM310___/ Elastic sealant during inst. |
| <input type="checkbox"/> 231. Flashing fastener, washer with sealing * | to outer and inner female grooves |
| <input type="checkbox"/> 234. Flat head flashing fastener | <input type="checkbox"/> 328. Elastinen tiivistysmassa |
| <input type="checkbox"/> 236. Flat head flashing fastener * | <input type="checkbox"/> 333. /CA3SE410/ Separating strip EPDM |
| <input type="checkbox"/> 300. /EA3SWE54318/ Expandable sealing band | <input type="checkbox"/> 350. /EA3PVCT25/ PVC tape |
| (plastic side facing inside) | (between purlin and panel) |

☐ Ruukki's delivery

*Fastener material stainless steel

Copyright © Ruukki Construction Oy. Allowed only for designs with Ruukki's products.

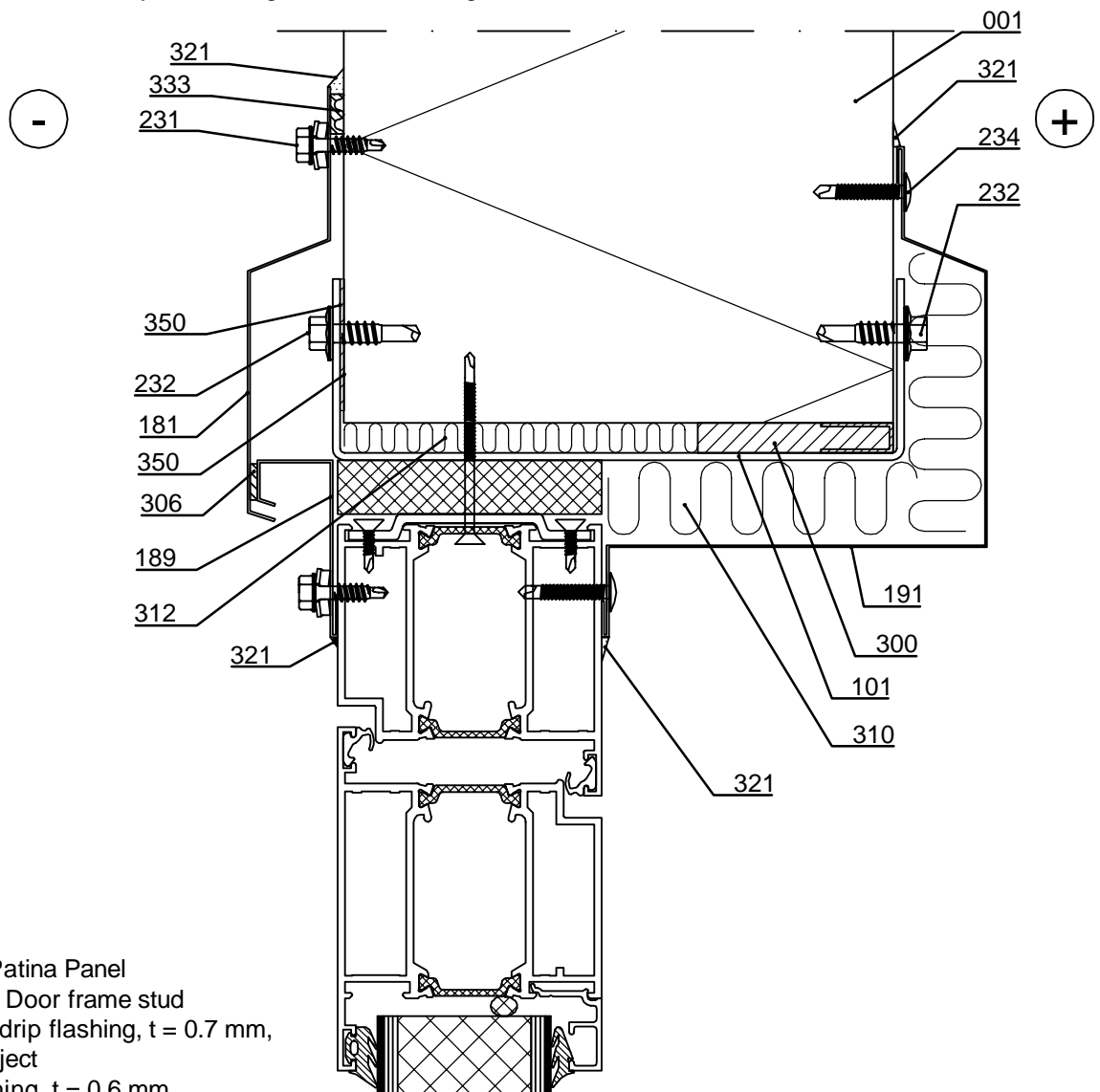
Ruukki ® Patina Panel
Horizontal installation
Door, vertical section

Date 15.05.2025	Rev. date	Work nr.	Drawing nr. SPAC08-1E-EN
Drawn by Ruukki	Rev.		
Scale 1:2	Building		File nr.

Note! Openings must be taken into account in dimensioning of elements.

Note! Remember to seal the grooves of the elements joining the door during the installation with elastic sealant to outer female groove to length equivalent to vertical joint flashing width (SPAC02-1E).

Supporting structures, if necessary, according to structural designer.



- ☐ 001. Ruukki ® Patina Panel
- ☐ 101. /EA1D___/ Door frame stud
- ☐ 181. COR-TEN drip flashing, t = 0.7 mm, according to project
- ☐ 189. Cover flashing, t = 0.6 mm, according to project
- ☐ 191. Cover flashing, t = 0.6 mm, according to project
- ☐ 231. Flashing fastener, washer with sealing*
- ☐ 232. Flashing fastener, without washer *
- ☐ 234. Flat head flashing fastener
- ☐ 300. /EA3SWE54318/ Expandable sealing band (plastic side facing inside)

- ☐ 306. ISO-BUTYL self adhesive tape 2x10 mm
- ☐ 310. Mineral wool
- ☐ 312. /EAWS___/ Mineral wool band
- ☐ 321. /EA3SM310___/ Elastic sealant mastic
- ☐ 333. /CA3SE410/ Separating strip EPDM
- ☐ 350. /EA3PVCT25/ PVC tape (between purlin and panel)

☒ Ruukki's delivery

*Screw material stainless steel

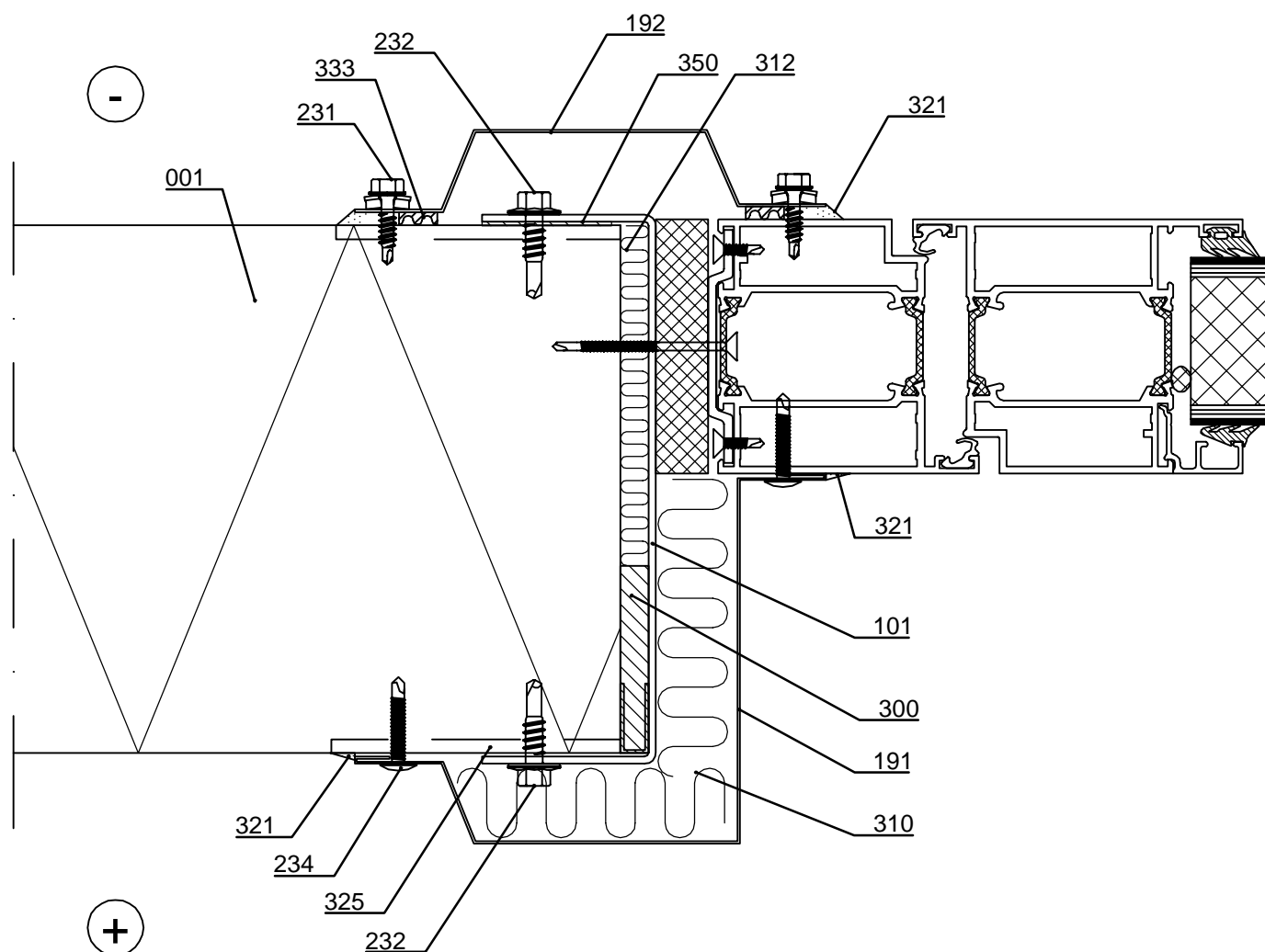
Ruukki ® Patina Panel
Horizontal installation
Door, horizontal section

Date 15.05.2025	Rev. date	Work nr.	Drawing nr. SPAC08-2E-EN
Drawn by Ruukki	Rev.		
Scale 1:2	Building	File nr.	

Note! Openings must be taken into account in dimensioning of elements.

Note! Remember to seal the grooves of the elements joining the door during the installation with elastic sealant to outer female groove to length equivalent to vertical joint flashing width (SPAC02-1E).

Supporting structures, if necessary, according to structural designer.



- | | |
|---|--|
| <input type="checkbox"/> 001. Ruukki ® Patina Panel | <input type="checkbox"/> 310. Mineral wool |
| <input type="checkbox"/> 101. /EA1D___/ Door frame stud | <input type="checkbox"/> 312. /EAWS___/ Mineral wool |
| <input type="checkbox"/> 191. Cover flashing, t = 0.6 mm, according to project | <input type="checkbox"/> 321. /EA3SM310___/ Elastic sealant mastic |
| <input type="checkbox"/> 192. COR-TEN cover flashing, t = 0.7 mm, acc. to project | <input type="checkbox"/> 325. /EA3SM310___/ Elastic sealant during inst. |
| <input type="checkbox"/> 231. Flashing fastener, washer with sealing * | to outer and inner female grooves |
| <input type="checkbox"/> 232. Flashing fastener, without washer * | <input type="checkbox"/> 333. /CA3SE410/ Separating strip EPDM |
| <input type="checkbox"/> 234. Flat head flashing fastener | <input type="checkbox"/> 350. /EA3PVCT25/ PVC tape |
| <input type="checkbox"/> 300. /EA3SWE54318/ Expandable sealing band
(plastic side facing inside) | (between purlin and panel) |

☒ Ruukki's delivery

*Screw material stainless steel



Contents of drawing

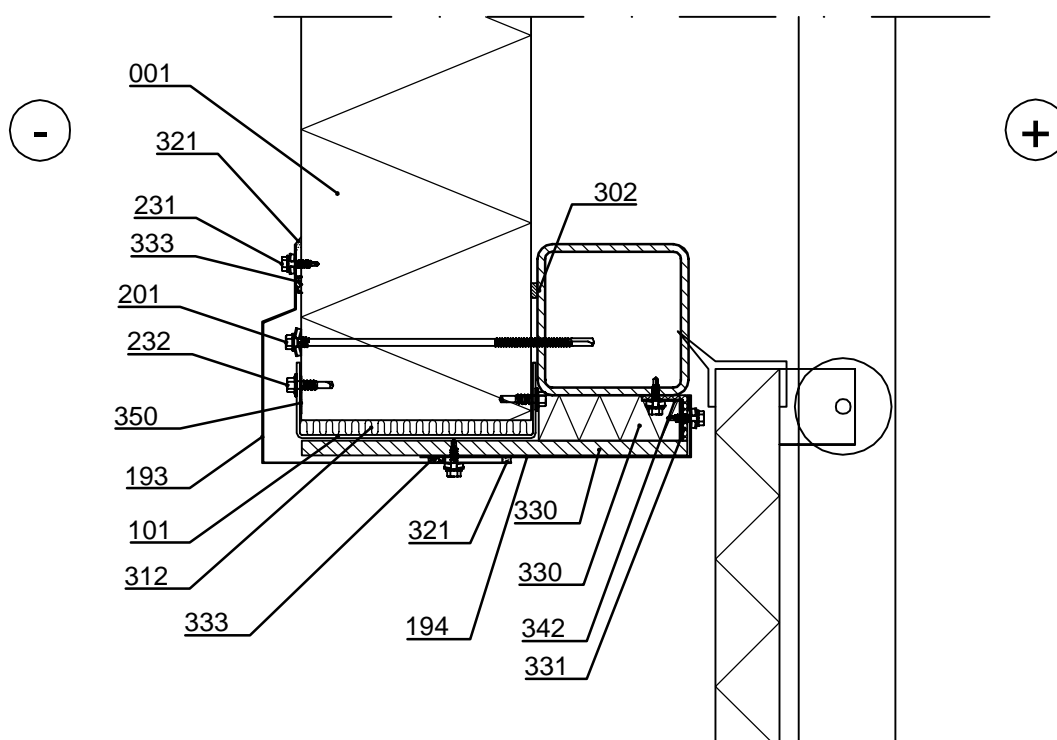
Ruukki ® Patina Panel
Horizontal installation
Overhead door, vertical section

Date 15.05.2025	Rev. date	Work nr.	Drawing nr. SPAC08-3E-EN
Drawn by Ruukki	Rev.		
Scale 1:5	Building		File nr.

Note! Openings must be taken into account in dimensioning of elements.

Note! Remember to seal the grooves of the elements joining the door during the installation with elastic sealant to outer female groove to length equivalent to vertical joint flashing width (SPAC02-1E).

Supporting structures according to structural designer.



- | | |
|---|---|
| <input type="checkbox"/> 001. Ruukki ® Patina Panel | <input type="checkbox"/> 312. /EAWS___/ Mineral wool |
| <input type="checkbox"/> 101. /EA1D___/ Door frame stud | <input type="checkbox"/> 321. /EA3SM310___/ Elastic sealant mastic |
| <input type="checkbox"/> 193. COR-TEN drip- / cover flashing, t = 0.7 mm, acc. to project | <input type="checkbox"/> 330. PU insulation |
| <input type="checkbox"/> 194. Drip- / cover flashing, t = 0.6 mm, acc. to project | <input type="checkbox"/> 331. EPDM sealing |
| <input type="checkbox"/> 201. Self-drilling element screw, washer with sealing * | <input type="checkbox"/> 333. /CA3SE410/ Separating strip EPDM |
| <input type="checkbox"/> 231. Flashing fastener, washer with sealing * | <input type="checkbox"/> 342. L-profile |
| <input type="checkbox"/> 232. Flashing fastener, without washer * | <input type="checkbox"/> 350. /EA3PVCT25/ PVC tape (between purlin and panel) |
| <input type="checkbox"/> 302. /EA3SS410/ Sealing strip | |

☒ Ruukki's delivery

*Fastener material stainless steel

Copyright © Ruukki Construction Oy. Allowed only for designs with Ruukki's products.



Contents of drawing

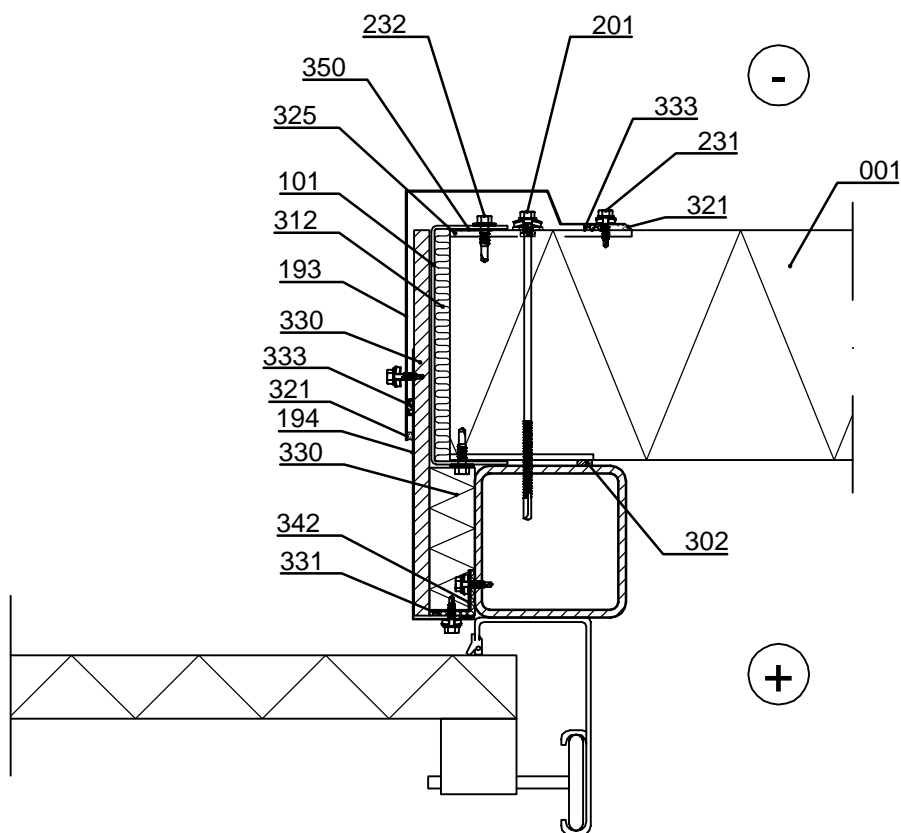
Ruukki ® Patina Panel
Horizontal installation
Overhead door, horizontal section

Date 15.05.2025	Rev. date	Work nr.	Drawing nr. SPAC08-4E-EN
Drawn by Ruukki	Rev.		
Scale 1:5	Building		File nr.

Note! Openings must be taken into account in dimensioning of elements.

Note! Remember to seal the grooves of the elements joining the door during the installation with elastic sealant to outer female groove to length equivalent to vertical joint flashing width (SPAC02-1E).

Supporting structures according to structural designer.



- | | |
|---|---|
| <input type="checkbox"/> 001. Ruukki ® Patina Panel | <input type="checkbox"/> 321. /EA3SM310___/ Elastic sealant mastic |
| <input type="checkbox"/> 101. /EA1D___/ Door frame stud | <input type="checkbox"/> 325. /EA3SM310___/ Elastic sealant to outer and inner female grooves |
| <input type="checkbox"/> 193. COR-TEN cover flashing, t = 0.7 mm, acc. to project | <input type="checkbox"/> 330. PU insulation |
| <input type="checkbox"/> 194. Drip- / cover flashing, t = 0.6 mm, acc. to project | <input type="checkbox"/> 331. EPDM sealing |
| <input type="checkbox"/> 201. Self-drilling element screw, washer with sealing * | <input type="checkbox"/> 333. /CA3SE410/ Separating strip EPDM |
| <input type="checkbox"/> 231. Flashing fastener, washer with sealing * | <input type="checkbox"/> 342. L-profile |
| <input type="checkbox"/> 232. Flashing fastener, without washer * | <input type="checkbox"/> 350. /EA3PVCT25/ PVC tape (between purlin and panel) |
| <input type="checkbox"/> 302. /EA3SS410/ Sealing strip | |
| <input type="checkbox"/> 312. /EAWS___/ Mineral wool | |

☒ Ruukki's delivery

*Fastener material stainless steel

Copyright © Ruukki Construction Oy. Allowed only for designs with Ruukki's products.



Contents of drawing

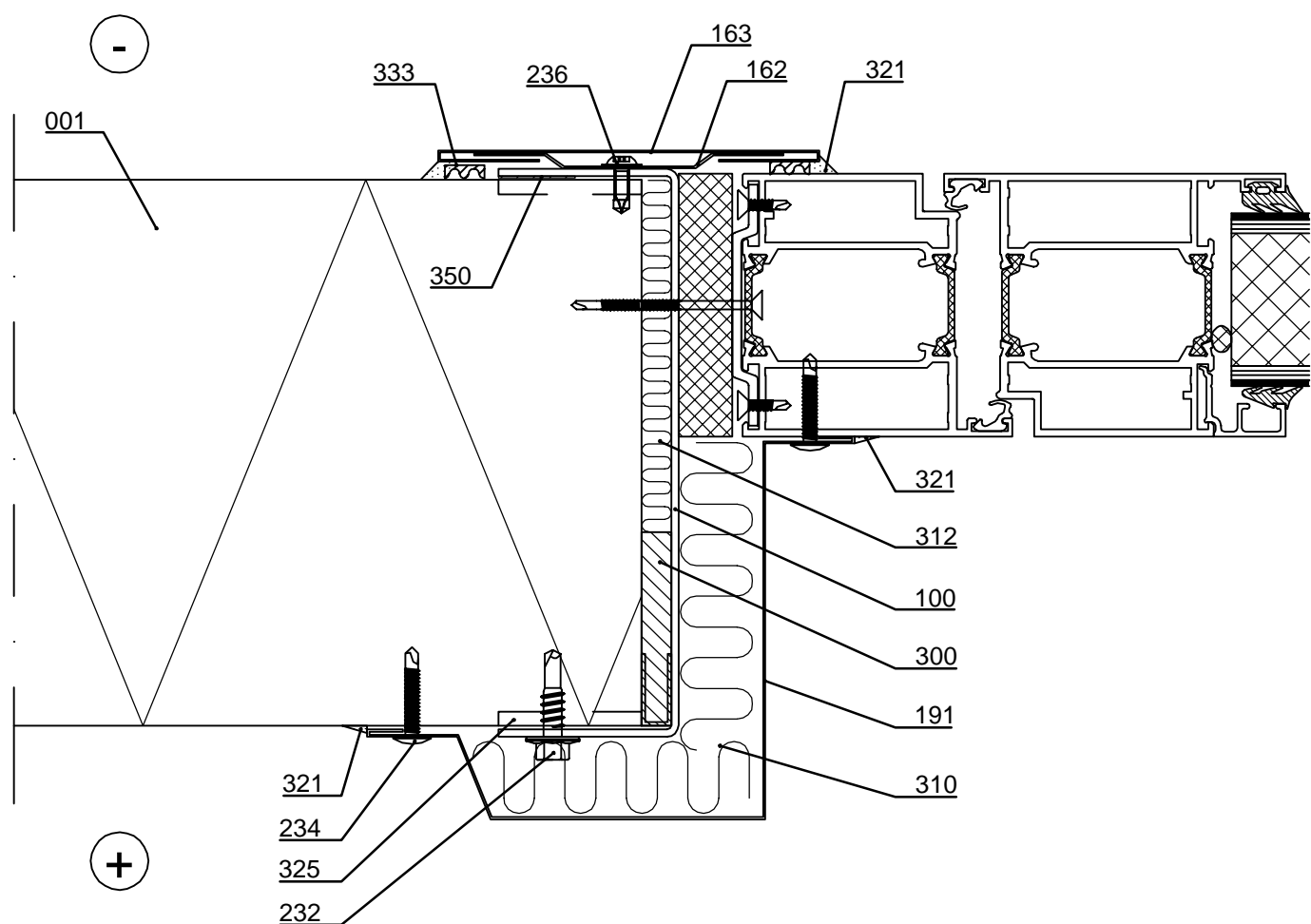
Ruukki ® Patina Panel
Horizontal installation
Door, horizontal section, Invisible

Date 15.05.2025	Rev. date	Work nr.	Drawing nr. SPAC08-30E-EN
Drawn by Ruukki	Rev.		
Scale 1:2	Building		File nr.

Note! Openings must be taken into account in dimensioning of elements.

Note! Remember to seal the grooves of the elements joining the door during the installation with elastic sealant to outer female groove to length equivalent to vertical joint flashing width (SPAC02-1E).

Supporting structures, if necessary, according to structural designer.



- ☐ 001. Ruukki ® Patina Panel
- ☐ 101. /EA1D___/ Door frame stud
- ☐ 162. COR-TEN Window bottom flashing Invisible
- ☐ 163. COR-TEN Window flashing Invisible
- ☐ 191. Cover flashing, t = 0.6 mm, according to project
- ☐ 231. Flashing fastener, washer with sealing *
- ☐ 232. Flashing fastener, without washer
- ☐ 234. Flat head flashing fastener
- ☐ 236. Flat head flashing fastener *

- ☐ 300. /EA3SWE54318/ Expandable sealing band (plastic side facing inside)
- ☐ 310. Mineral wool
- ☐ 312. /EAWS___/ Mineral wool
- ☐ 321. /EA3SM310___/ Elastic sealant mastic
- ☐ 325. /EA3SM310___/ Elastic sealant during inst. to outer and inner female grooves
- ☐ 333. /CA3SE410/ Separating strip EPDM
- ☐ 350. /EA3PVCT25/ PVC tape (between purlin and panel)

☒ Ruukki's delivery

*Screw material stainless steel

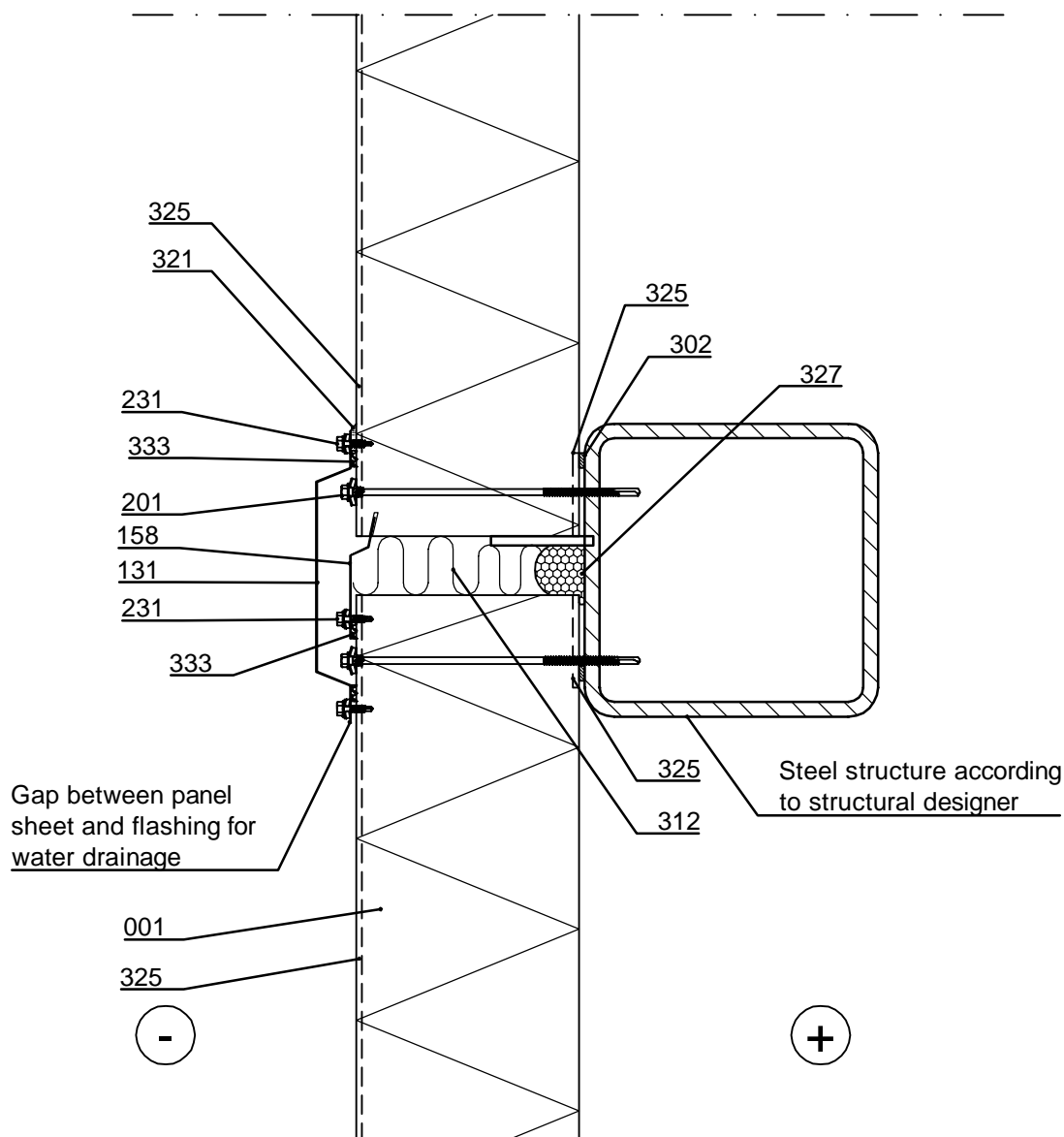
Copyright © Ruukki Construction Oy. Allowed only for designs with Ruukki's products.



Contents of drawing

Ruukki ® Patina Panel
Vertical installation, horizontal joint
Vertical section, option 1

Date 15.05.2025	Rev. date	Work nr.	Drawing nr. SPAC09-1E-EN
Drawn by Ruukki	Rev.		
Scale 1:5	Building		File nr.



- ☐ 001. Ruukki ® Patina Panel, vertical installation
- ☐ 131. /EA1JV12/ COR-TEN vertical joint flashing
- ☐ 158. Horizontal joint flashing, t = 0.6 mm
- ☐ 201. Self-drilling element screw, washer with sealing *
- ☐ 231. Flashing fastener, washer with sealing *
- ☐ 302. /EA3SS410/ Sealing strip
- ☐ 312. /EAWS___/ Mineral wool

- ☐ 321. /EA3SM310___/ Elastic sealant mastic
- ☐ 325. /EA3SM310___/ Elastic sealant mastic during inst. to outer female groove in full length of panel and inner female groove from panel end to sealing
- ☐ 327. Elastic polyurethane foam
- ☐ 333. /CA3SE410/ Separating strip EPDM

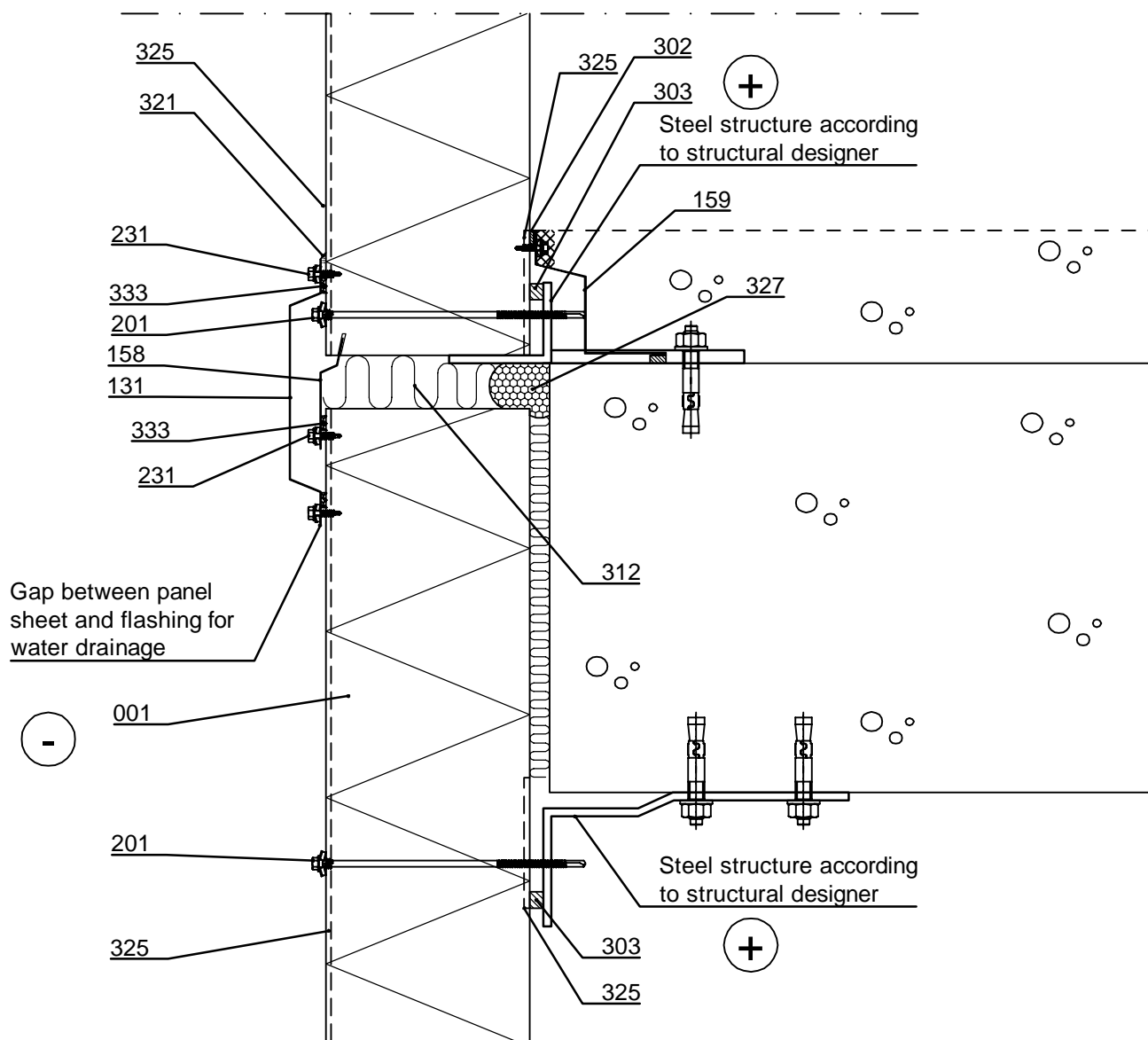
☒ Ruukki's delivery

*Fastener material stainless steel

Copyright © Ruukki Construction Oy. Allowed only for designs with Ruukki's products.

Ruukki ® Patina Panel
Vertical installation, horizontal joint
Vertical section, option 2

Date 15.05.2025	Rev. date	Work nr.	Drawing nr. SPAC09-2E-EN
Drawn by Ruukki	Rev.		
Scale 1:5	Building		File nr.



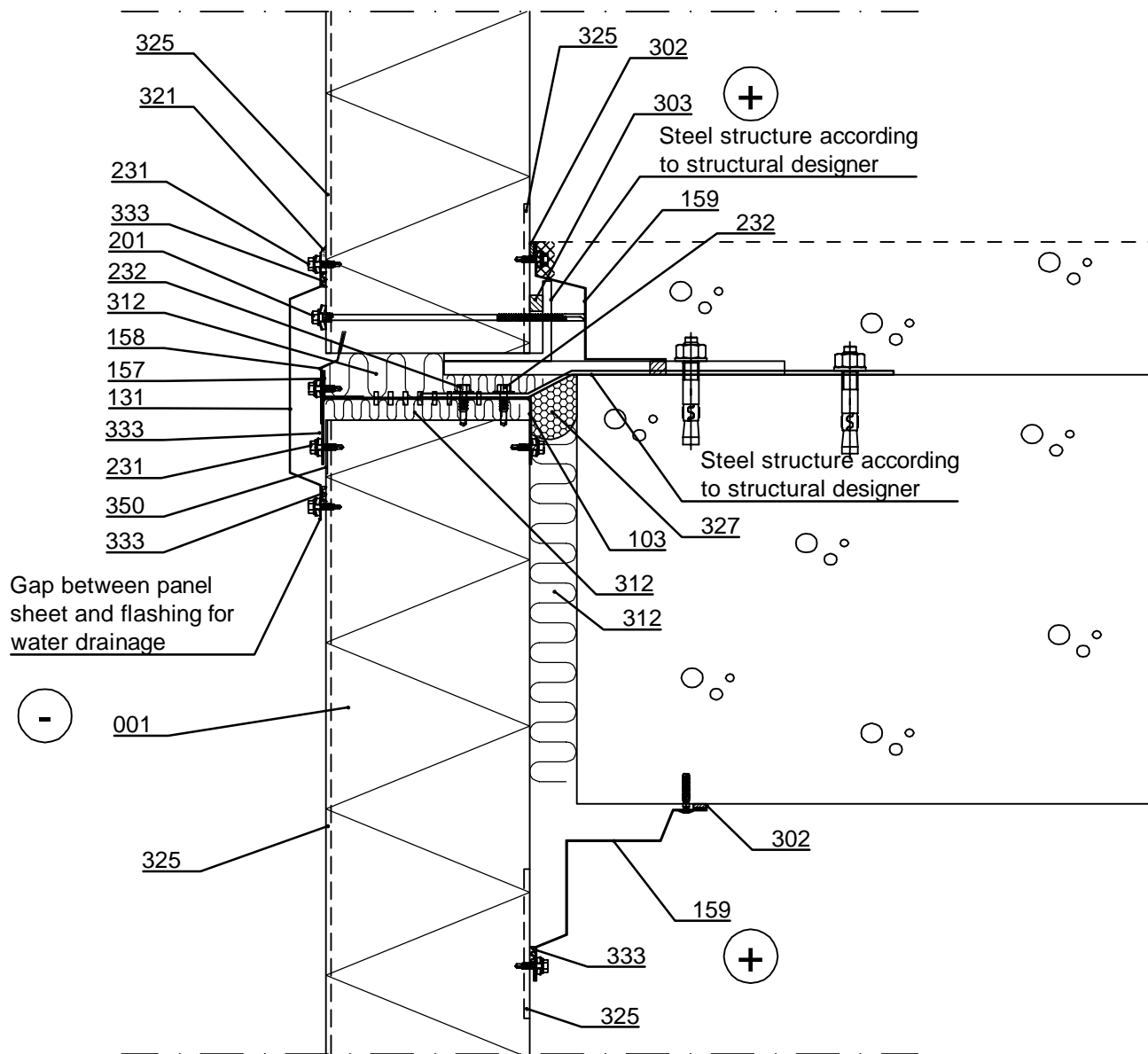
- ☐ 001. Ruukki ® Patina Panel, vertical installation
- ☐ 131. /EA1JV12/ COR-TEN vertical joint flashing
- ☐ 158. Horizontal joint flashing, t = 0.6 mm
- ☐ 159. Cover flashing, acc. to project
- ☐ 201. Self-drilling element screw, washer with sealing *
- ☐ 231. Flashing fastener, washer with sealing *
- ☐ 302. /EA3SS410/ Sealing strip
- ☐ 303. /EA3SS1210/ Sealing strip
- ☐ 312. /EAWS___/ Mineral wool
- ☐ 321. /EA3SM310___/ Elastic sealant mastic
- ☐ 325. /EA3SM310___/ Elastic sealant mastic during inst. to outer female groove in full length of panel and inner female groove from panel end to sealing
- ☐ 327. Elastic polyurethane foam
- ☐ 333. /CA3SE410/ Separating strip EPDM

☒ Ruukki's delivery

*Fastener material stainless steel

Ruukki ® Patina Panel
Vertical installation, horizontal joint
Vertical section, option 3

Date 15.05.2025	Rev. date	Work nr.	Drawing nr. SPAC09-3E-EN
Drawn by Ruukki	Rev.		
Scale 1:5	Building		File nr.



- | | |
|--|--|
| <input type="checkbox"/> 001. Ruukki ® Patina Panel, vertical installation | <input type="checkbox"/> 312. /EAWS___/ Mineral wool |
| <input type="checkbox"/> 103. /EA1W___/ Window purlin, oval holes on the sides | <input type="checkbox"/> 321. /EA3SM310___/ Elastic sealant mastic |
| <input type="checkbox"/> 131. /EA1JV12/ COR-TEN vertical joint flashing | <input type="checkbox"/> 325. /EA3SM310___/ Elastic sealant mastic during inst. to outer female groove in full length of panel and inner female groove from panel end to sealing |
| <input type="checkbox"/> 157. Support flashing, t = 0.6 mm | <input type="checkbox"/> 327. Elastic polyurethane foam |
| <input type="checkbox"/> 158. Horizontal joint flashing, t = 0.6 mm | <input type="checkbox"/> 333. /CA3SE410/ Separating strip EPDM |
| <input type="checkbox"/> 159. Cover flashing, acc. to project | <input type="checkbox"/> 350. /EA3PVCT25/ PVC tape (on the panel ext. surface under purlin) |
| <input type="checkbox"/> 201. Self-drilling element screw, washer with sealing * | |
| <input type="checkbox"/> 231. Flashing fastener, washer with sealing * | |
| <input type="checkbox"/> 302. /EA3SS410/ Sealing strip | |
| <input type="checkbox"/> 303. /EA3SS1210/ Sealing strip | |

☒ Ruukki's delivery

*Fastener material stainless steel