


Drawing nr.	Contents of drawing			
SPBC01-1E-EN	Plinth, horizontal installation			
SPBC01-2E-EN	Plinth, horizontal installation			
SPBC01-3E-EN	Plinth, horizontal installation			
SPBC01-4E-EN	Plinth, horizontal installation			
SPBC01-5E-EN	Plinth, vertical and diagonal installation			
SPBC01-6E-EN	Plinth, detail			
SPBC01-7E-EN	Plinth, detail			
SPBC01-8E-EN	Plinth, detail			
SPBC02-1E-EN	Joint between panels, horizontal installation			
SPBC02-2E-EN	Joint between panels, vertical and diagonal installation			
SPBC02-3E-EN	Joint between panels, horizontal, vertical and diagonal installation			
SPBC03-1E-EN	Vertical joint, horizontal inst., rectangle steel column, option 1			
SPBC03-2E-EN	Vertical joint, horizontal inst., rectangle steel column, option 2			
SPBC04-1E-EN	External corner, horizontal inst., rectangle steel column, option 1			
SPBC04-2E-EN	External corner, horizontal inst., rectangle steel column, option 2			
SPBC05-1E-EN	Internal corner, horizontal inst., rectangle steel column			
SPBC06-1E-EN	Parapet, horizontal installation, side eaves			
SPBC06-2E-EN	Parapet, horizontal installation, end eaves			
SPBC06-3E-EN	Parapet, vertical and diagonal inst., side eaves			
SPBC06-4E-EN	Parapet, vertical and diagonal inst., end eaves			
SPBC06-5E-EN	Cantilever eaves, horizontal inst., side eaves, prof. sheet			
SPBC06-6E-EN	Cantilever eaves, horizontal inst., end eaves, prof. sheet			
SPBC06-7E-EN	Vapour barrier and insulation supp. flashing fastening			
SPBC07-1E-EN	Window, horizontal installation			
SPBC07-2E-EN	Window, horizontal installation			
SPBC07-3E-EN	System window, horizontal installation, large window			
SPBC07-4E-EN	System window, horizontal installation, large window			
SPBC08-1E-EN	Door, horizontal installation			
SPBC08-2E-EN	Door, horizontal installation			
SPBC08-3E-EN	Overhead door, horizontal installation			
SPBC08-4E-EN	Overhead door, horizontal installation			
SPAC09-1E-EN	Horizontal joint between panels, vertical inst. rectangle steel beam, option 1			
SPAC09-2E-EN	Horizontal joint between panels, vertical inst. concrete slab, option 2			
SPAC09-3E-EN	Horizontal joint between panels, vertical inst. concrete slab, option 3			
City sector		Block	Site/Reg. nr.	File nr.
Building type			Drawing type	Nr.
Building, Name and address			Contents of drawing	Scale
 <p>Ruukki Poland Ltd St. Łukowska 7/9 64-600 OBORNIKI POLAND</p> <p>www.ruukki.com</p>			<p>Ruukki ® Patina Panel BASE DETAIL DRAWINGS External walls (34 pcs)</p>	
Date	Designer	Work nr.	Work nr.	Drw. nr.
17.05.2021				Rev.
Drawn by	Checked			
Ruukki				



Contents of drawing

Ruukki ® Patina Panel
Accessory numbers in details

Date 17.05.2021	Rev. date	Work nr.	Drawing nr. nSPBC00-0E-EN
Drawn by Ruukki	Rev.		
Scale	Building		File nr.

SANDWICH PANELS

001. Ruukki ® Patina Panel 150, 160, 170, 180, 200, 230

FLASHINGS

100-103. Standard purlins and starter tracks

104-109. Purlins and other $t \geq 2$ mm fastening flashings

111-119. Plinth flashings

131-159. Vertical seam-, external- and internal corner flashings

161-179. Eave flashings

181-194. Window- and door flashings

195-199. Flashings used in uplifted roofs

FASTENERS

201. Self-drilling element screw, washer with sealing, stainless steel

202. Self-drilling element screw, without washer, stainless steel

215. Countersink washer

231. Flashing fastener, washer with sealing, stainless steel

232. Flashing fastener, without washer, stainless steel

234. Flat headed flashing fastener for concrete

242. Fastener screw, without washer, stainless steel

243. Fastener screw, without washer, stainless steel

255. Spike fastener, without washer

265. Fastener screw to wood, washer with sealing, stainless steel

270. Installation sleeve

SEALANTS AND INSULATIONS

300. Expandable sealing band

301. Plinth sealing expanding

302. Sealing tape for flashings

303. Sealing tape for frame

306. ISO-BUTYL self adhesive tape 2x10mm

307. Sealing strip Nordic

308. Self adhesive butylband

309. Sealing strip corner Nordic

310. Mineral wool

311. Mineral wool

312. Mineral wool batten

321. Sealing compound

325. Sealing compound during installation

327. Elastic polyurethane, eg. Illbruck FM330

330. PU insulation

331. EPDM sealing

332. Separating piece EPDM

333. Separating strip EPDM

341. Plywood

342. L-profile

350. PVC tape

351. Rubber o-ring sealing

352. Lead-in rubber grommet



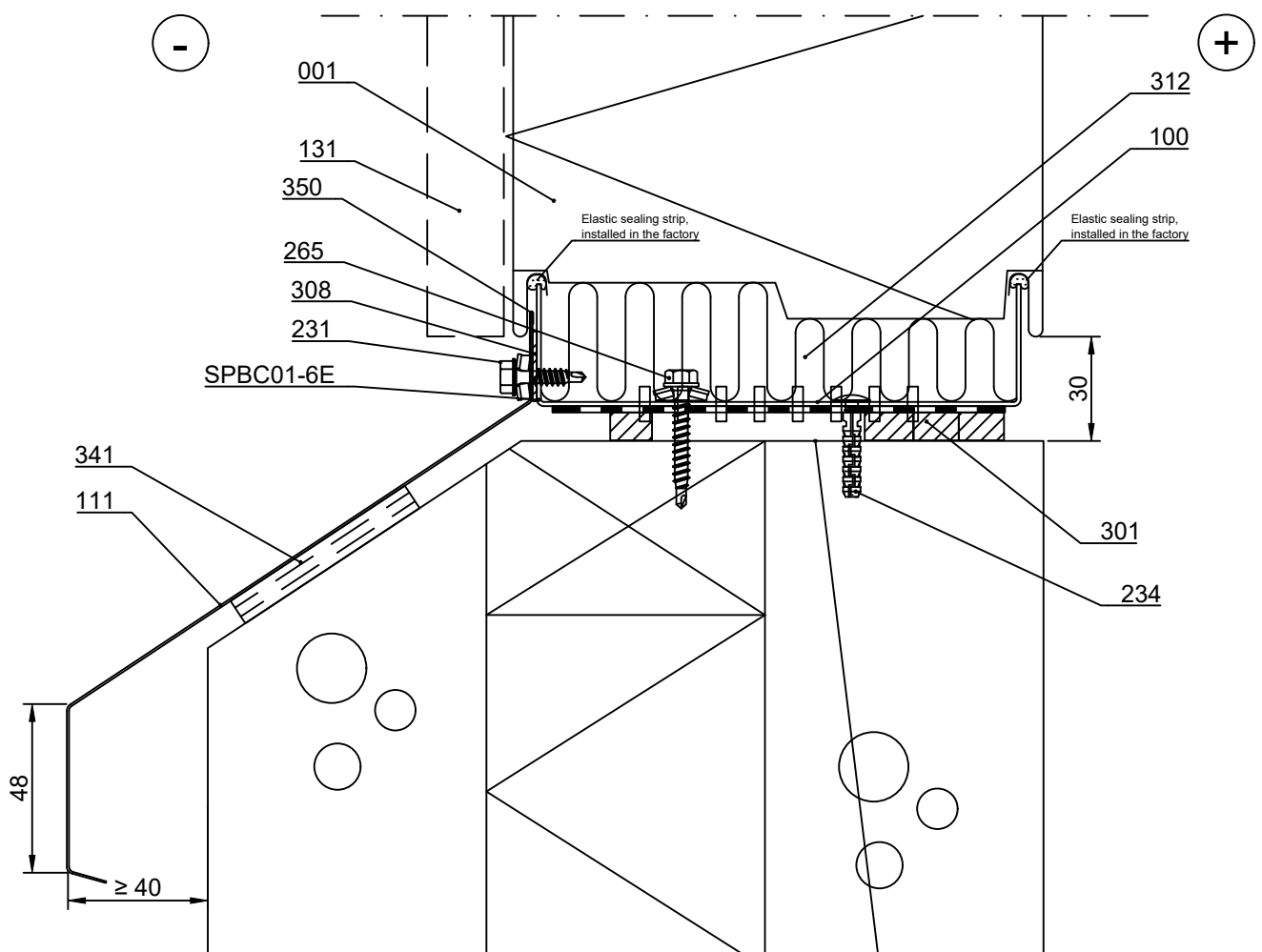
Contents of drawing

Ruukki ® Patina Panel

Horizontal installation, plinth, vertical section

Option 1

Date 17.05.2021	Rev. date 18.07.2024	Work nr.	Drawing nr. nSPBC01-1E-EN
Drawn by Ruukki	Rev.		
Scale 1:2	Building	File nr.	



Special care should be taken to ensure the smoothness of the top of plinth, tolerance ± 5 mm

- ☐ 001. Ruukki ® Patina Panel
- ☐ 100. /EA1U___/ Starter track
- ☐ 111. COR-TEN Plinth flashing (installed simultaneously with elements)
- ☐ 131. COR-TEN Vertical joint flashing
- ☐ 231. Flashing fastener, washer with sealing *
- ☐ 234. Flat head flashing fastener to concrete || or
- ☐ 265. /S3H55042WA4B/ Fastener *, wood c/c600
- ☐ 301. /EA3PSE/ Plinth sealing, expanding (wider sealing on internal side)
- ☐ 308. Self adhesive butylband
- ☐ 312. Mineral wool batten
- ☐ 341. Plywood, if necessary
- ☐ 350. PVC tape

☒ Ruukki's delivery

*Screw material stainless steel

Copyright © Ruukki Construction Oy. Allowed only for designs with Ruukki's products.

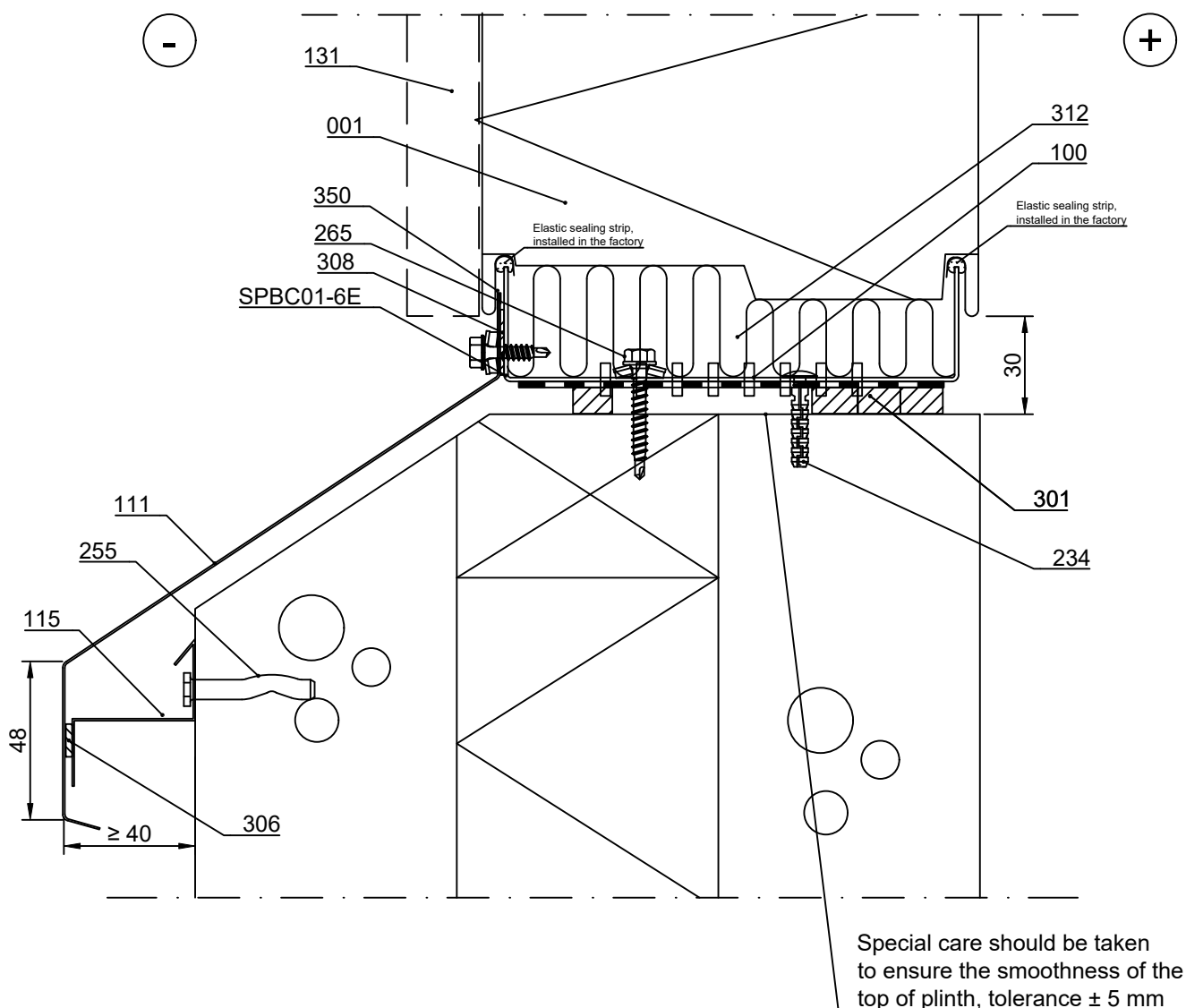


Contents of drawing

Ruukki ® Patina Panel

Horizontal installation, plinth, vertical section
Option 2

Date 17.05.2021	Rev. date 18.07.2024	Work nr.	Drawing nr. nSPBC01-2E-EN
Drawn by Ruukki	Rev.		
Scale 1:2	Building	File nr.	



- ☐ 001. Ruukki ® Patina Panel
- ☐ 100. /EA1U___/ Starter track
- ☐ 111. COR-TEN Plinth flashing (installed simultaneously with elements)
- ☐ 115. Support flashing (installed simultaneously with elements)
- ☐ 131. COR-TEN Vertical joint flashing
- ☐ 234. Flat head flashing fastener to concrete
- ☐ 265. /S3H55042WA4B/ Fastener *, wood c/c600
- ☐ 301. /EA3PSE/ Plinth sealing, expanding (wider sealing on internal side)
- ☐ 306. ISO-BUTYL self adhesive tape 2x10 mm
- ☐ 308. Self adhesive butylband
- ☐ 312. Mineral wool batten
- ☐ 350. PVC tape

☒ Ruukki's delivery

*Screw material stainless steel

Copyright © Ruukki Construction Oy. Allowed only for designs with Ruukki's products.

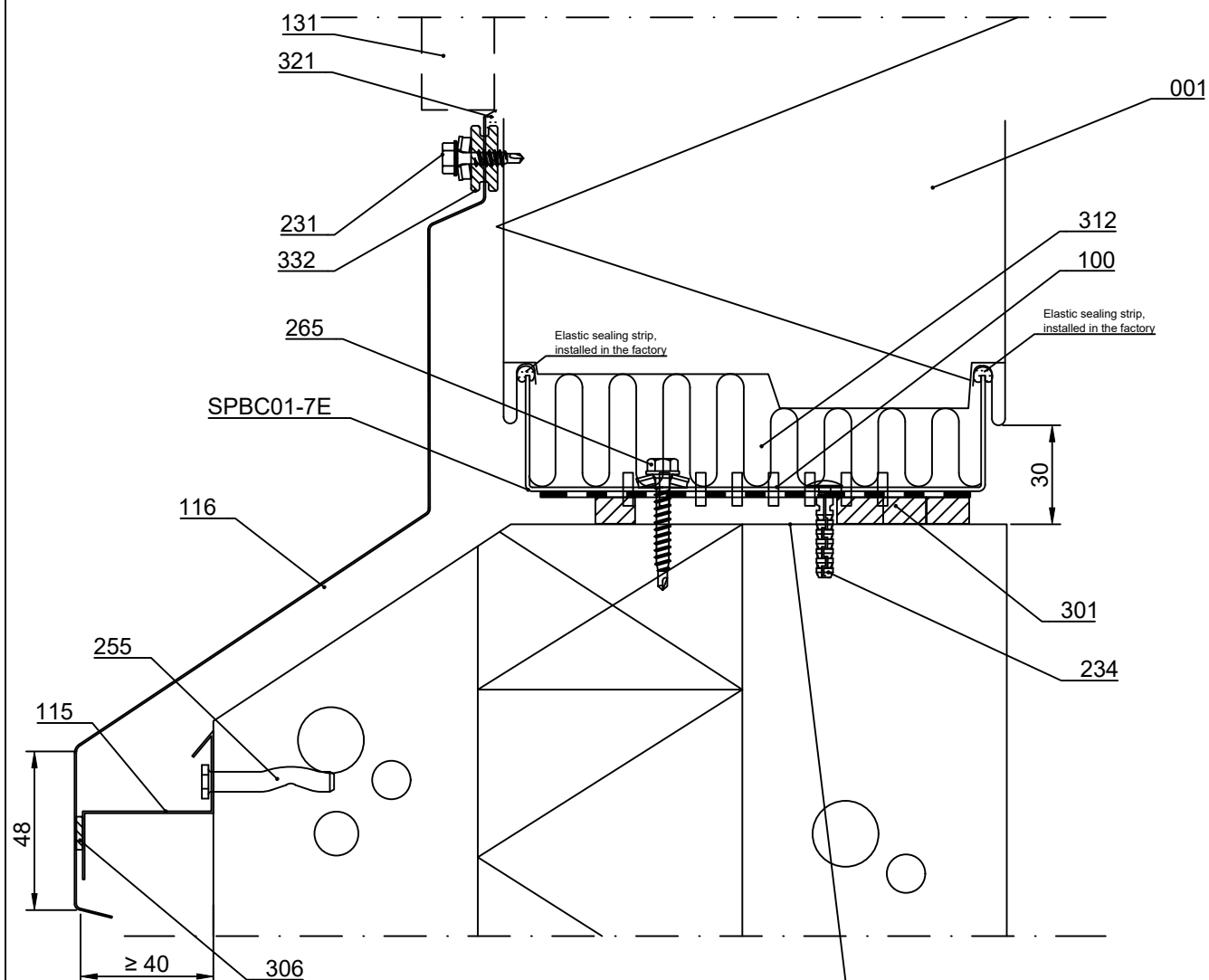


Contents of drawing

Ruukki ® Patina Panel

Horizontal installation, plinth, vertical section
Option 3

Date 17.05.2021	Rev. date 18.07.2024	Work nr.	Drawing nr. nSPBC01-3E-EN
Drawn by Ruukki	Rev.		
Scale 1:2	Building		File nr.



- ☐ 001. Ruukki ® Patina Panel
- ☐ 100. /EA1U___/ Starter track
- ☐ 115. Support flashing (installed simultaneously with elements)
- ☐ 116. COR-TEN Plinth flashing (can be installed after element installation)
- ☐ 131. COR-TEN Vertical joint flashing
- ☐ 231. Flashing fastener, washer with sealing *
- ☐ 234. Flat head flashing fastener to concrete || or
- ☐ 265. /S3H55042WA4B/ Fastener *, wood c/c600
- ☐ 301. /EA3PSE/ Plinth sealing, expanding (wider sealing on internal side)
- ☐ 306. ISO-BUTYL self adhesive tape 2x10 mm
- ☐ 312. Mineral wool batten
- ☐ 321. /EA3SM312___/ Sealing compound
- ☐ 332. /CA3SP814/ Separating piece EPDM

Special care should be taken
to ensure the smoothness of the
top of plinth, tolerance ± 5 mm

☒ Ruukki's delivery

*Screw material stainless steel

Copyright © Ruukki Construction Oy. Allowed only for designs with Ruukki's products.

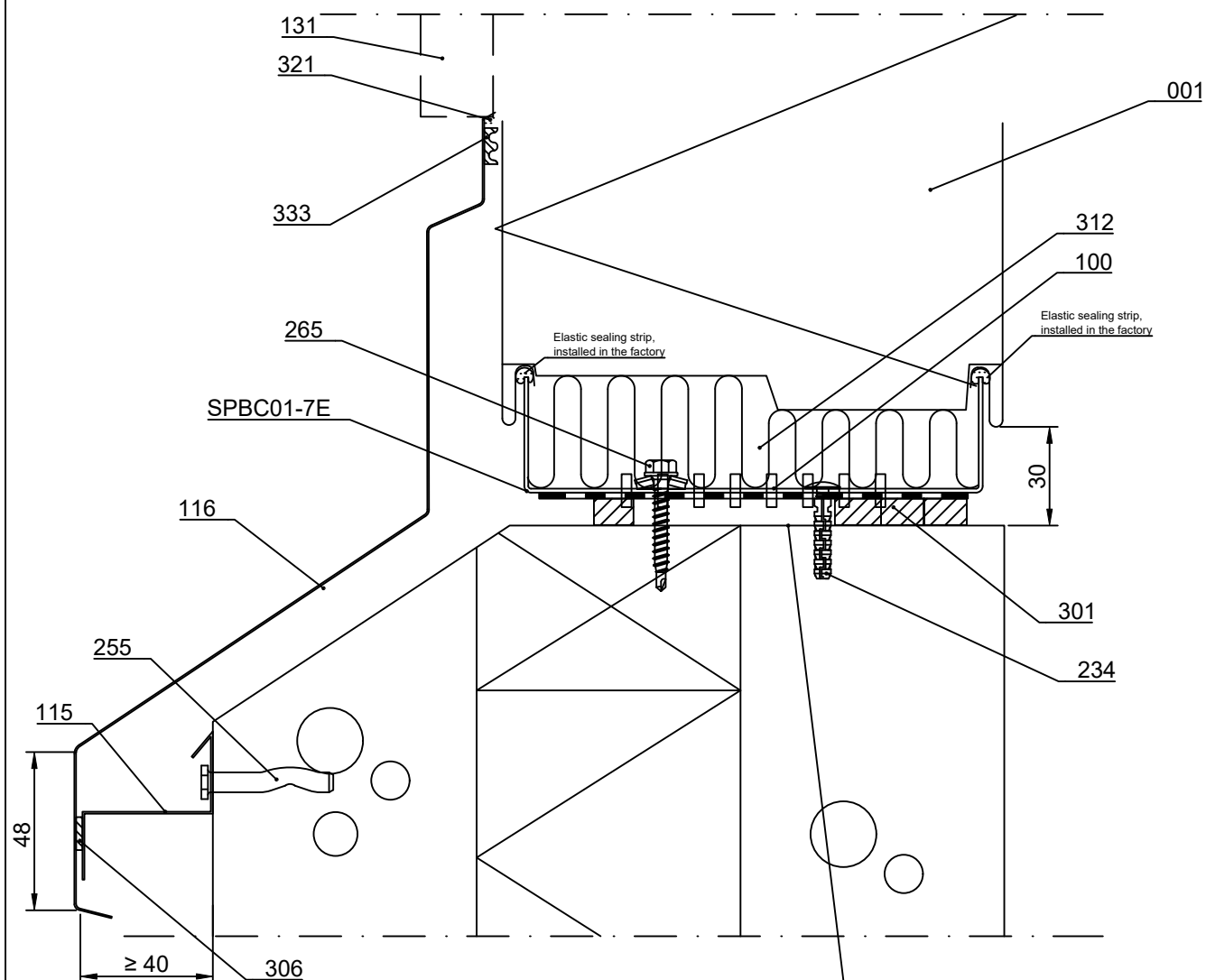
RUUKKI

Contents of drawing

Ruukki ® Patina Panel

Horizontal installation, plinth, vertical section
Option 3

Date 17.05.2021	Rev. date 18.07.2024	Work nr.	Drawing nr. nSPBC01-4E-EN
Drawn by Ruukki	Rev.		
Scale 1:2	Building		File nr.



- ☐ 001. Ruukki ® Patina Panel
- ☐ 100. /EA1U___/ Starter track
- ☐ 115. Support flashing (installed simultaneously with elements)
- ☐ 116. COR-TEN Plinth flashing (can be installed after element installation)
- ☐ 131. COR-TEN Vertical joint flashing
- ☐ 234. Flat head flashing fastener to concrete || or
- ☐ 265. /S3H55042WA4B/ Fastener *, wood c/c600
- ☐ 301. /EA3PSE/ Plinth sealing, expanding (wider sealing on internal side)
- ☐ 306. ISO-BUTYL self adhesive tape 2x10 mm
- ☐ 312. Mineral wool batten
- ☐ 321. /EA3SM312___/ Sealing compound
- ☐ 333. /CA3SE410/ Separating strip EPDM

Special care should be taken
to ensure the smoothness of the
top of plinth, tolerance ± 5 mm

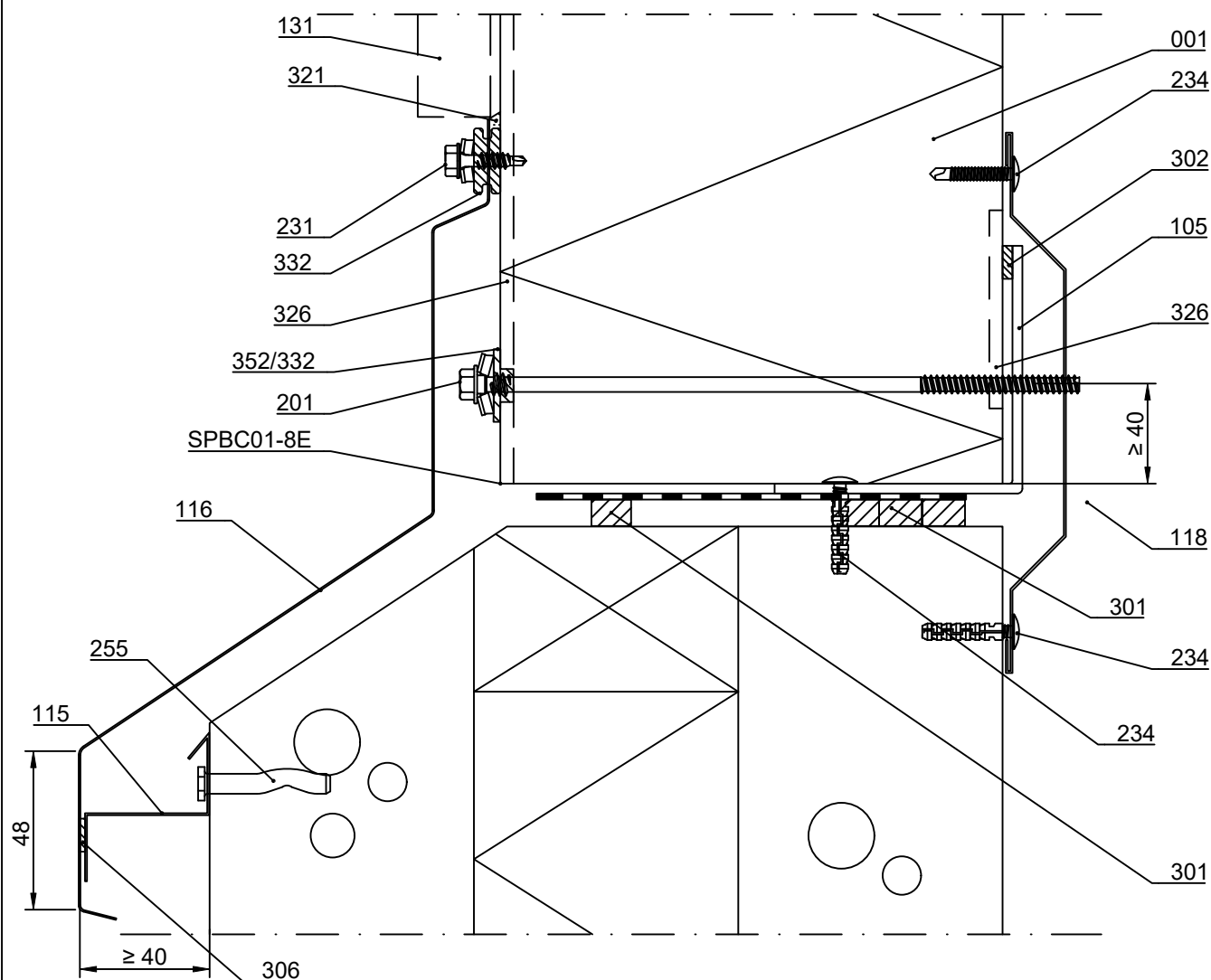
☒ Ruukki's delivery

*Screw material stainless steel

Copyright © Ruukki Construction Oy. Allowed only for designs with Ruukki's products.

Ruukki ® Patina Panel
vertical and diagonal installation
Plinth, vertical section

Date 17.05.2021	Rev. date 18.07.2024	Work nr.	Drawing nr. nSPBC01-5E-EN
Drawn by Ruukki	Rev.		
Scale 1:2	Building		File nr.



- ☐ 001. Ruukki ® Patina Panel
- ☐ 105. /EA1L75/ Support L-purlin, (t=3mm)
- ☐ 115. Support flashing (installed with elements)
- ☐ 116. COR-TEN Plinth flashing (can be installed afterwards)
- ☐ 118. Cover flashing, according to project
- ☐ 131. COR-TEN Vertical joint flashing
- ☐ 201. Self-drilling element screw, washer with sealing *
- ☐ 231. Flashing fastener, washer with sealing *
- ☐ 234. Flat head flashing fastener to concrete
- ☐ 255. /S5R48038/ Spike fastener, concrete c/c600
- ☐ 301. /EA3PSE/ Plinth sealing, expanding (wider sealing on internal side)
- ☐ 302. /EA3SS410/ Sealing tape
- ☐ 306. ISO-BUTYL self adhesive tape 2x10 mm
- ☐ 321. /EA3SM312___/ Sealing compound
- ☐ 326. /EA3SM312___/ Sealing compound during inst. to outer female groove full length of element and inner female groove 60 mm from panel end
- ☐ 332. /CA3SP814/ Separating piece EPDM
- ☐ 333. /CA3SE410/ Separating strip EPDM
- ☐ 352. Lead-in rubber grommet

☒ Ruukki's delivery

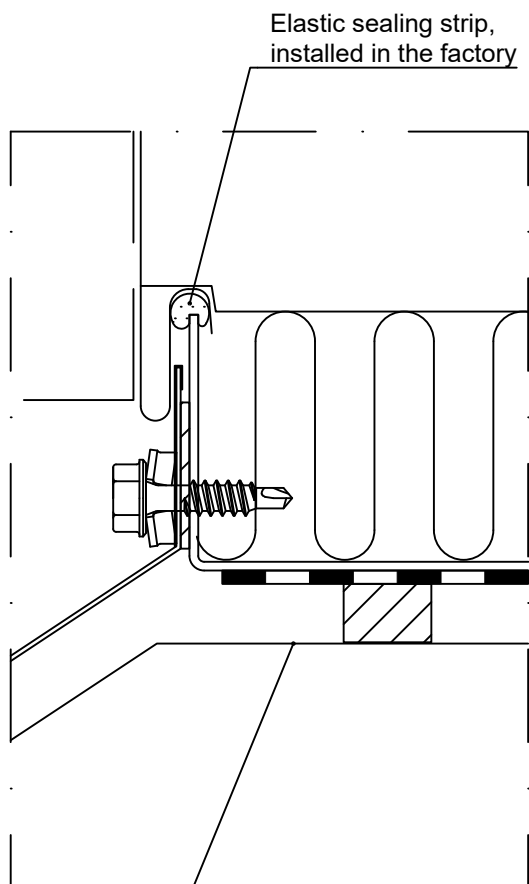
*Screw material stainless steel



Contents of drawing

Ruukki ® Patina Panel
Horizontal installation, plinth, detail

Date 17.05.2021	Rev. date 18.07.2024	Work nr.	Drawing nr. nSPBC01-6E-EN
Drawn by Ruukki	Rev.		
Scale 1:1	Building	File nr.	



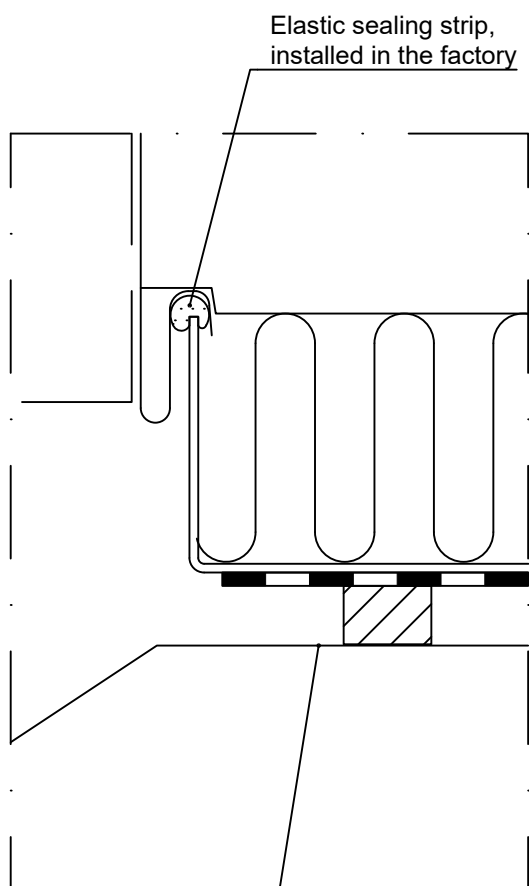
Special care should be taken to ensure the
smoothness of the top of plinth, tolerance ± 5 mm



Contents of drawing

Ruukki ® Patina Panel
Horizontal installation, plinth, detail

Date 17.05.2021	Rev. date 18.07.2024	Work nr.	Drawing nr. nSPBC01-7E-EN
Drawn by Ruukki	Rev.		
Scale 1:1	Building		File nr.

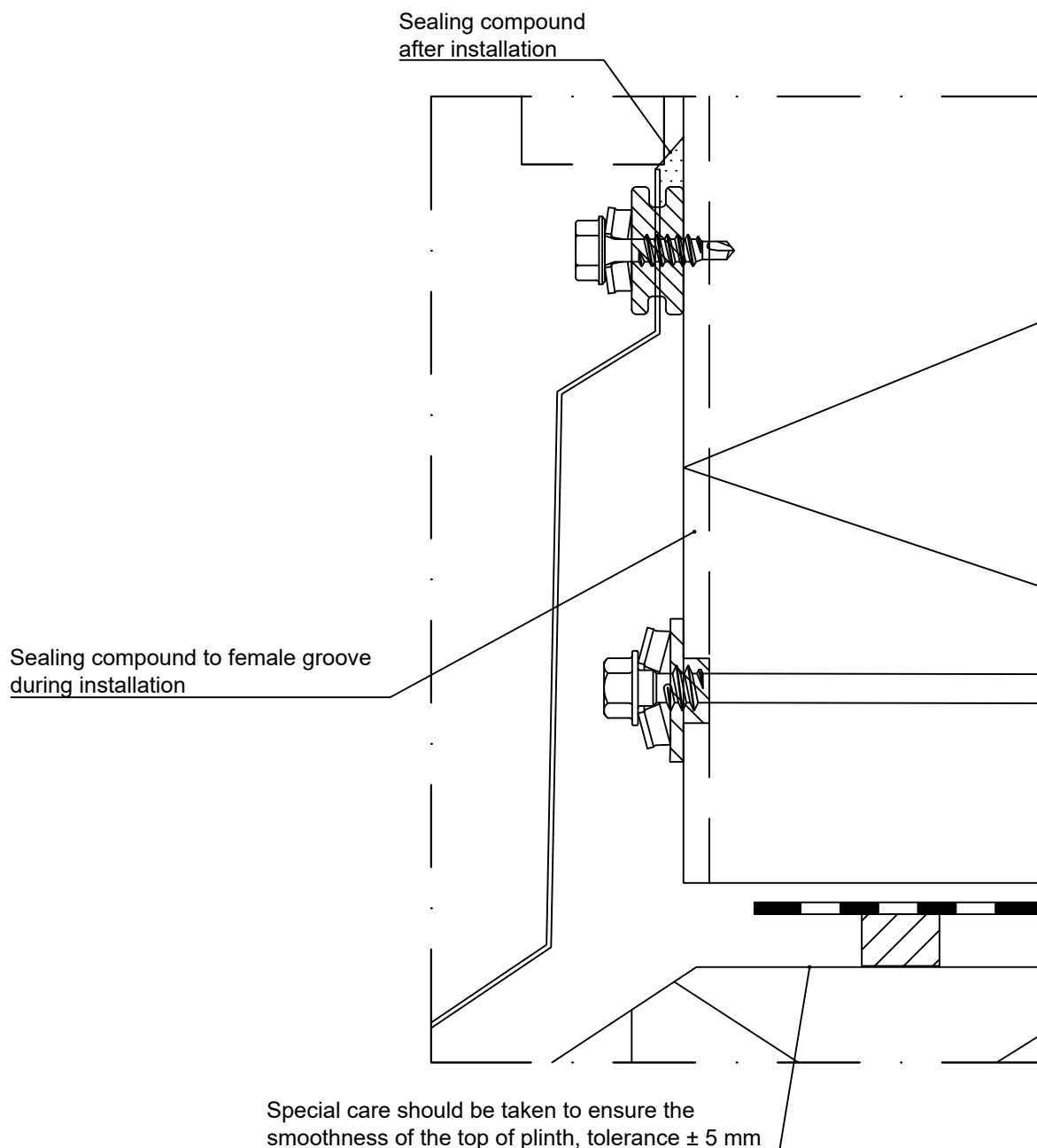




Contents of drawing

Ruukki ® Patina Panel
vertical and diagonal installation
Plinth, detail

Date 17.05.2021	Rev. date	Work nr.	Drawing nr. nSPBC01-8E-EN
Drawn by Ruukki	Rev.		
Scale 1:1	Building		File nr.



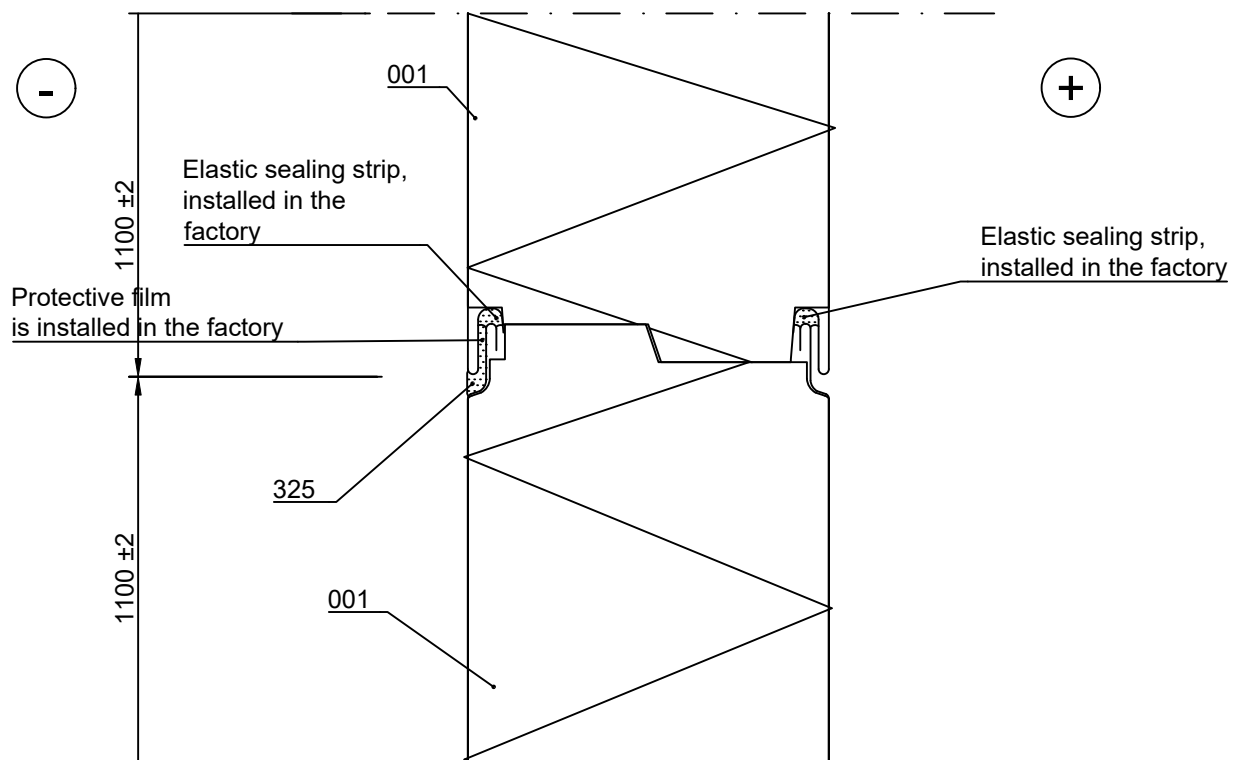


Contents of drawing

Ruukki ® Patina Panel

Horizontal installation, joint between panels,
Vertical section

Date 17.05.2021	Rev. date 18.07.2024	Work nr.	Drawing nr. nSPBC02-1E-EN
Drawn by Ruukki	Rev.		
Scale 1:2	Building	File nr.	



- ☐ 001. Ruukki ® Patina Panel
- ☐ 325. /EA3SM312___/ Sealing compound during installation to outer female groove to length equivalent to vertical joint flashing width and inner female groove in length of sealing

☒ Ruukki's delivery

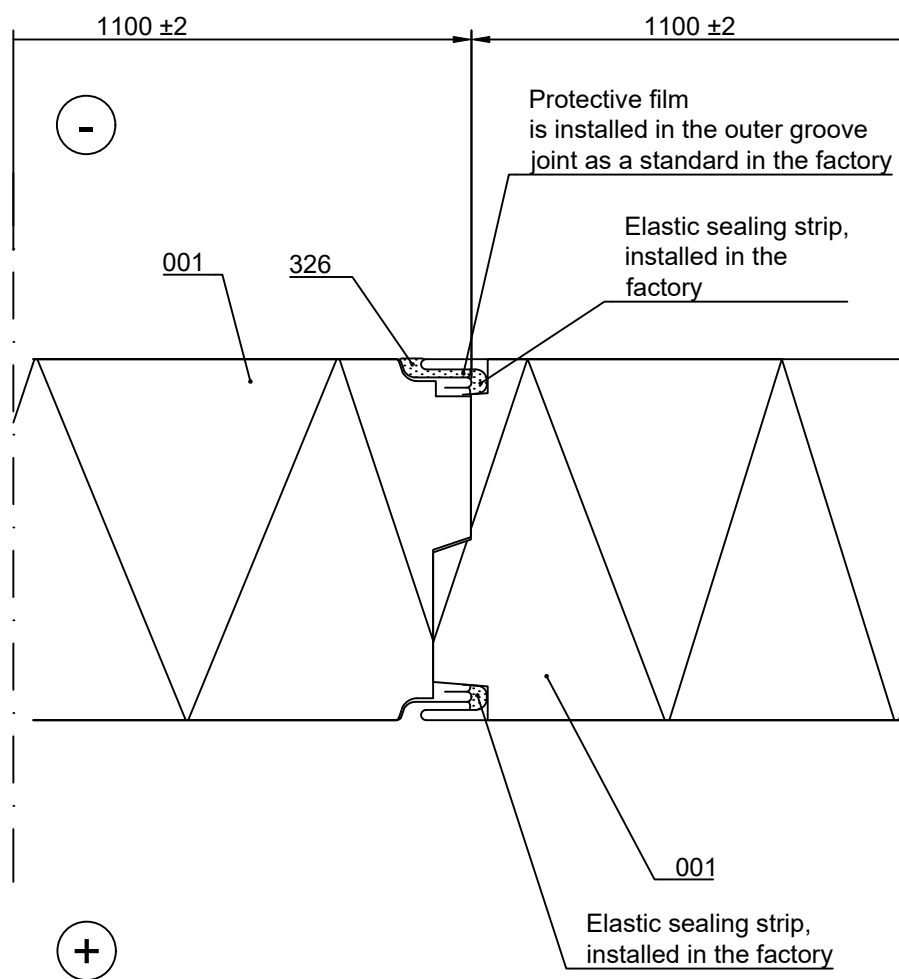
Copyright © Ruukki Construction Oy. Allowed only for designs with Ruukki's products.



Contents of drawing

Ruukki ® Patina Panel vertical-
and diagonal installation
Joint between panels, horizontal section

Date 17.05.2021	Rev. date 18.07.2024	Work nr.	Drawing nr. nSPBC02-2E-EN
Drawn by Ruukki	Rev.		
Scale 1:2	Building	File nr.	



- ☐ 001. Ruukki ® Patina Panel
- ☐ 326. /EA3SM312___/ Sealing compound during installation to outer female groove in full length of element and inner female groove 60 mm from panel end
- ☒ Ruukki's delivery

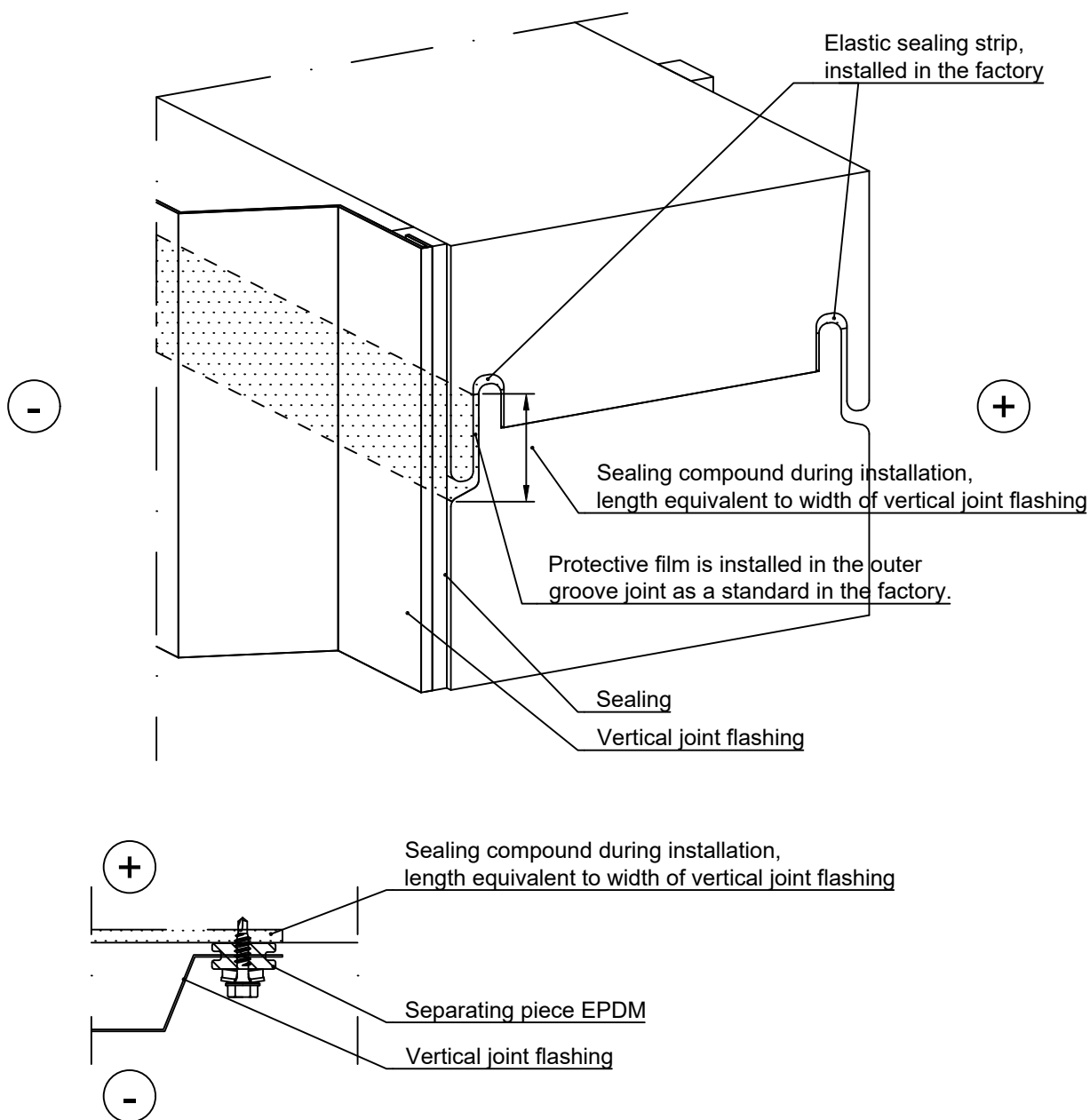
Copyright © Ruukki Construction Oy. Allowed only for designs with Ruukki's products.



Contents of drawing

Ruukki ® Patina Panel
horizontal, vertical- and diagonal installation
Joint between panels

Date 17.05.2021	Rev. date	Work nr.	Drawing nr. nSPBC02-3E-EN
Drawn by Ruukki	Rev.		
Scale 1:1	Building		File nr.



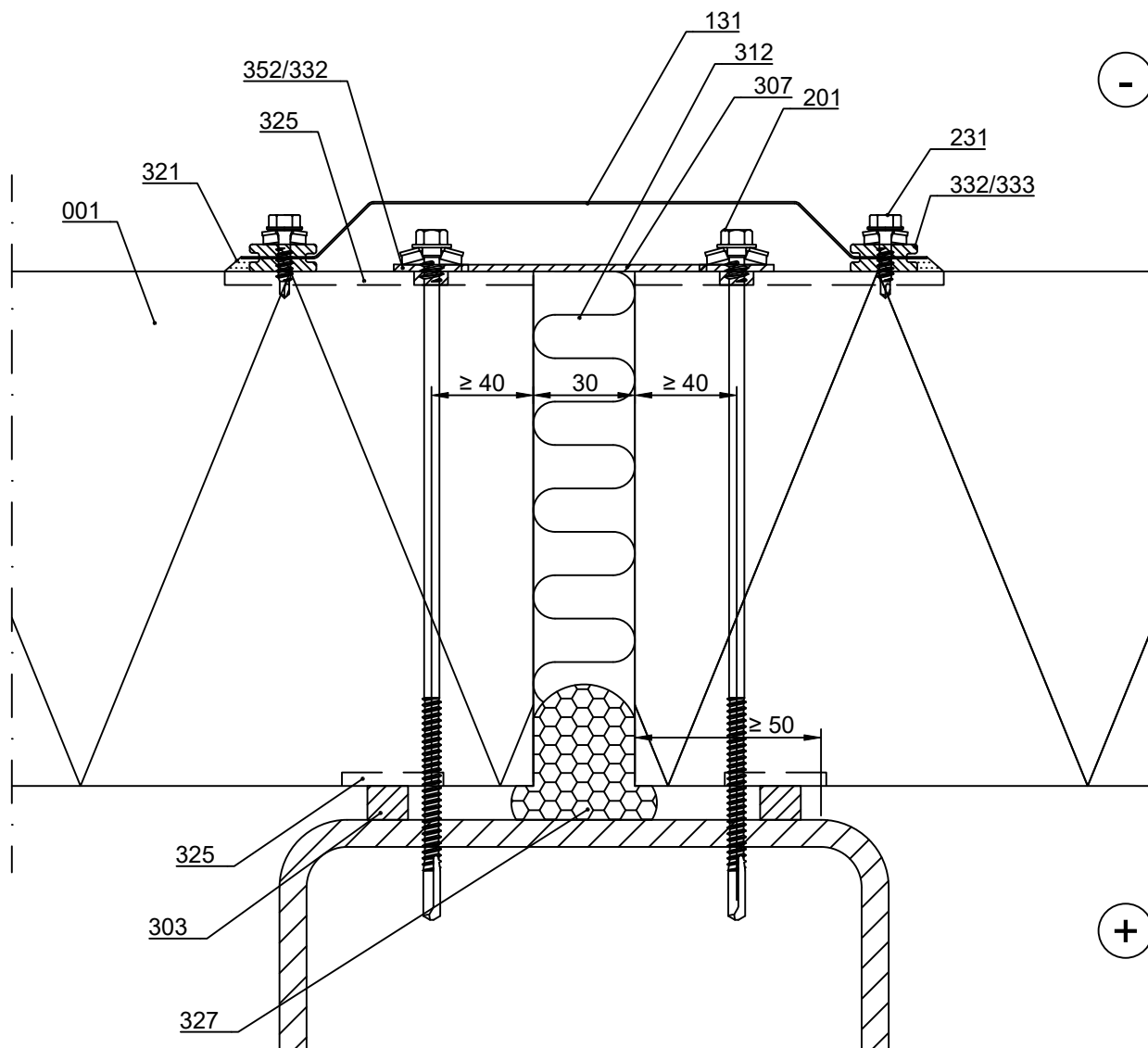
Horizontal installation:

Sealing compound during installation to outer female groove. Length equivalent to width of vertical joint flashing. It is important that the groove is completely filled with mastic sealant, i.e. it must be applied before interlocking the joint.

Vertical installation:

Sealing compound during installation to outer female groove in full length of panel and inner female groove 60 mm in length. It is important that the groove is completely filled with mastic sealant, i.e. it must be applied before interlocking the joint.

Date 17.05.2021	Rev. date 18.07.2024	Work nr.	Drawing nr. nSPBC03-1E-EN
Drawn by Ruukki	Rev.		
Scale 1:2	Building		File nr.

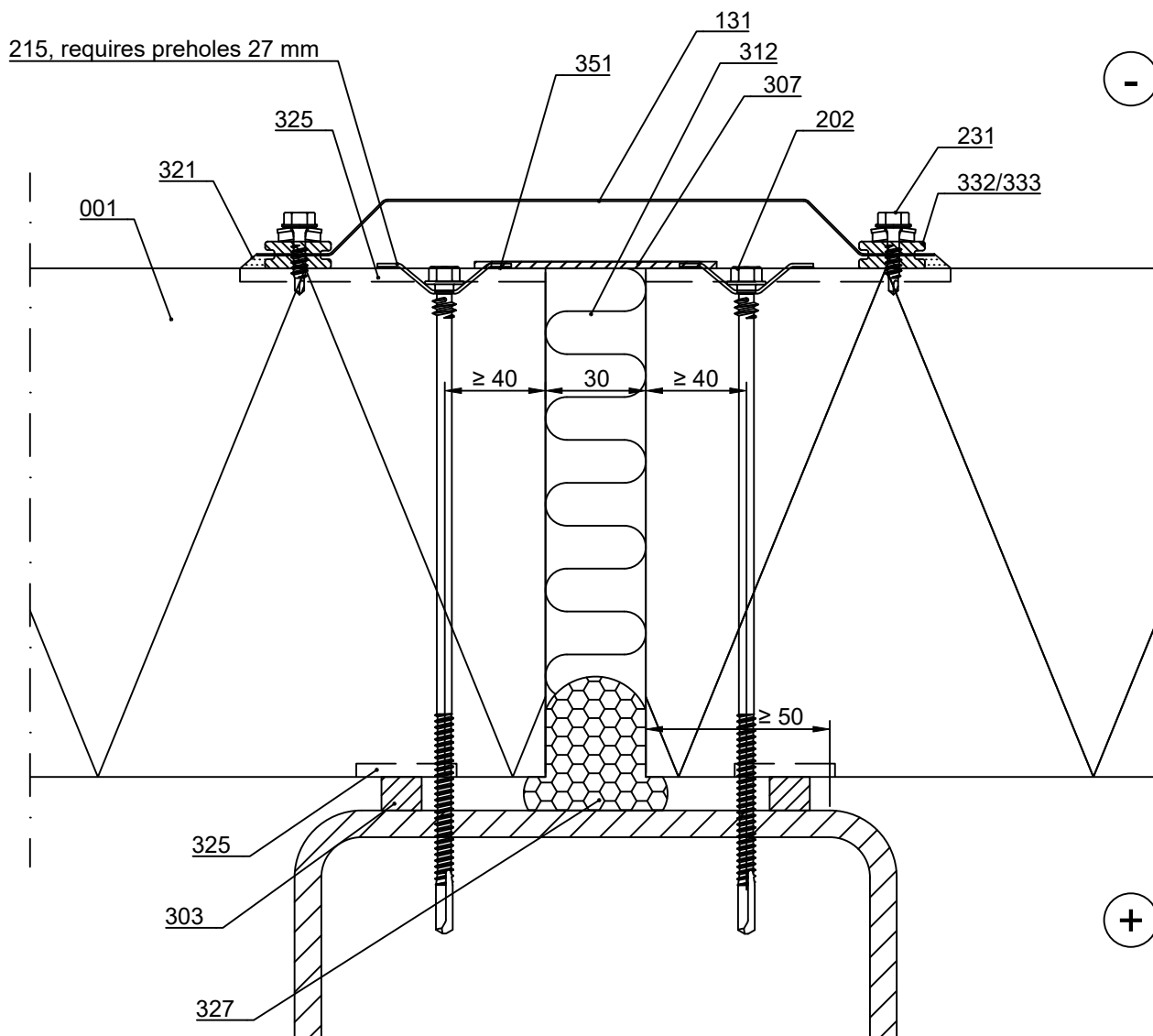


- ☐ 001. Ruukki ® Patina Panel
- ☐ 131. COR-TEN vertical joint flashing
- ☐ 201. Self-drilling element screw, washer with sealing *
- ☐ 231. Flashing fastener, washer with sealing *
- ☐ 303. /EA3SS1210/ Sealing tape
- ☐ 307. /EA3JSN7525/ Joint sealing Nordic
- ☐ 312. Mineral wool batten
- ☐ 321. /EA3SM312___/ Sealing compound
- ☐ 325. /EA3SM312___/ Sealing compound during inst. to outer female groove in length equivalent to vertical joint flashing width and inner female groove from panel end to sealing
- ☐ 327. Elastic polyurethane foam
- ☐ 332. /CA3SP814/ Separating piece EPDM /333. /CA3SE410/ Separating strip EPDM
- ☐ 352. Lead-in rubber grommet

☒ Ruukki's delivery

*Screw material stainless steel

Date 17.05.2021	Rev. date 18.07.2024	Work nr.	Drawing nr. nSPBC03-2E-EN
Drawn by Ruukki	Rev.		
Scale 1:2	Building		File nr.



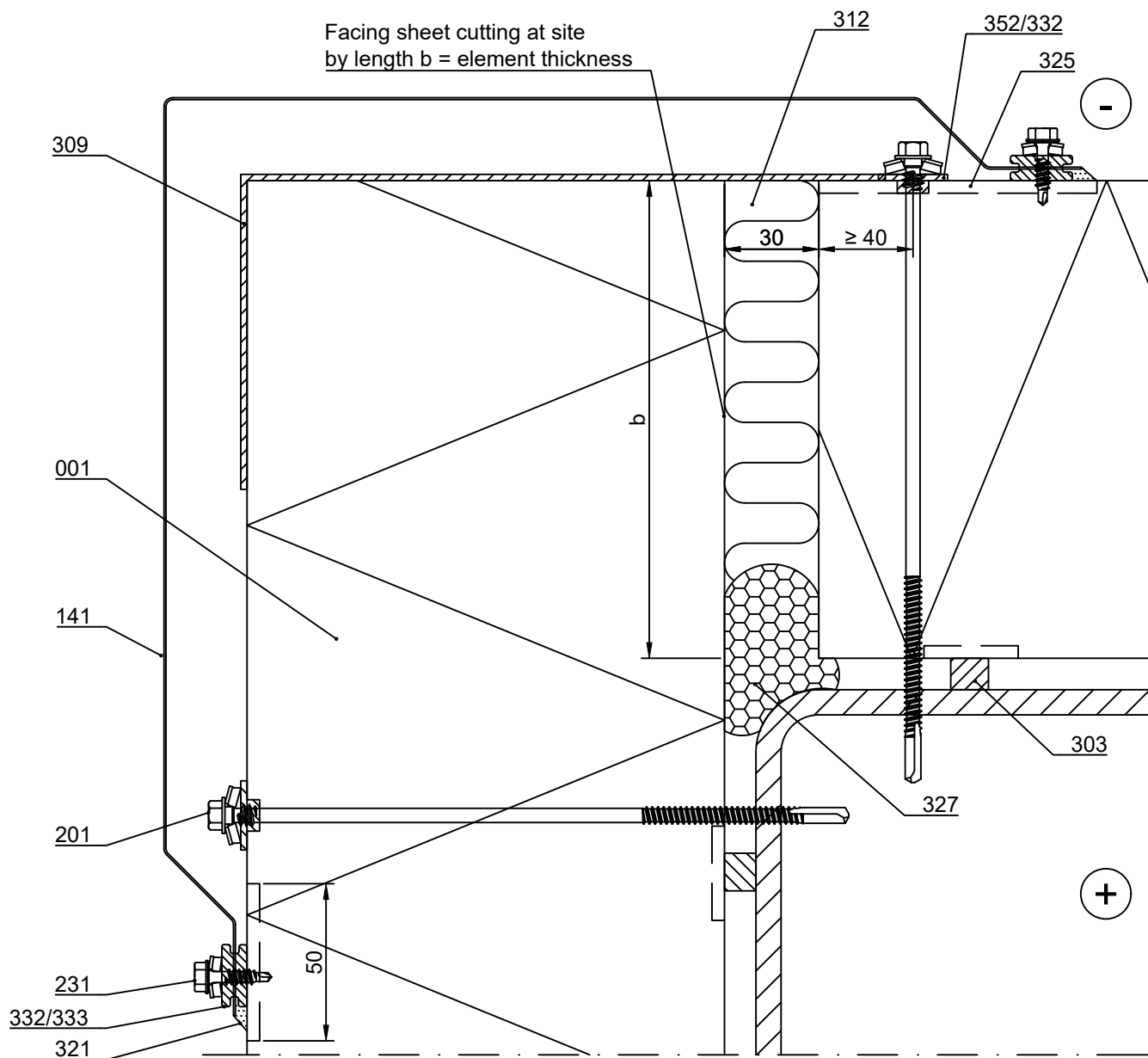
- ☐ 001. Ruukki ® Patina Panel
- ☐ 131. COR-TEN vertical joint flashing
- ☐ 202. Self-drilling element screw, without washer *
- ☐ 215. /EA2W40-910S/ Countersink washer
- ☐ 231. Flashing fastener, washer with sealing *
- ☐ 303. /EA3SS1210/ Sealing tape
- ☐ 307. /EA3JSN7525/ Joint sealing Nordic
- ☐ 312. Mineral wool batten
- ☐ 321. /EA3SM312___/ Sealing compound

- ☐ 325. /EA3SM312___/ Sealing compound during inst. to outer female groove in length equivalent to vertical joint flashing width and inner female groove from panel end to sealing
- ☐ 327. Elastic polyurethane foam
- ☐ 332. /CA3SP814/ Separating piece EPDM
- ☐ /333. /CA3SE410/ Separating strip EPDM
- ☐ 351. Rubber o-ring sealing

☒ Ruukki's delivery

*Screw material stainless steel

Date 17.05.2021	Rev. date 18.07.2024	Work nr.	Drawing nr. nSPBC04-1E-EN
Drawn by Ruukki	Rev.		
Scale 1:2	Building		File nr.



- ☐ 001. Ruukki ® Patina Panel
- ☐ 141. COR-TEN external corner flashing
- ☐ 201. Self-drilling element screw, washer with sealing *
- ☐ 231. Flashing fastener, washer with sealing *
- ☐ 303. /EA3SS1210/ Sealing tape
- ☐ 309. /EA3JSCN30025/ Joint sealing corner Nordic
- ☐ 312. Mineral wool batten
- ☐ 321. /EA3SM312___/ Sealing compound

- ☐ 325. /EA3SM312___/ Sealing compound during inst. to outer female groove in length equivalent to vertical joint flashing width and inner female groove from panel end to sealing
- ☐ 327. Elastic polyurethane foam
- ☐ 332. /CA3SP814/ Separating piece EPDM
- ☐ 333. /CA3SE410/ Separating strip EPDM
- ☐ 352. Lead-in rubber grommet

☒ Ruukki's delivery

*Screw material stainless steel

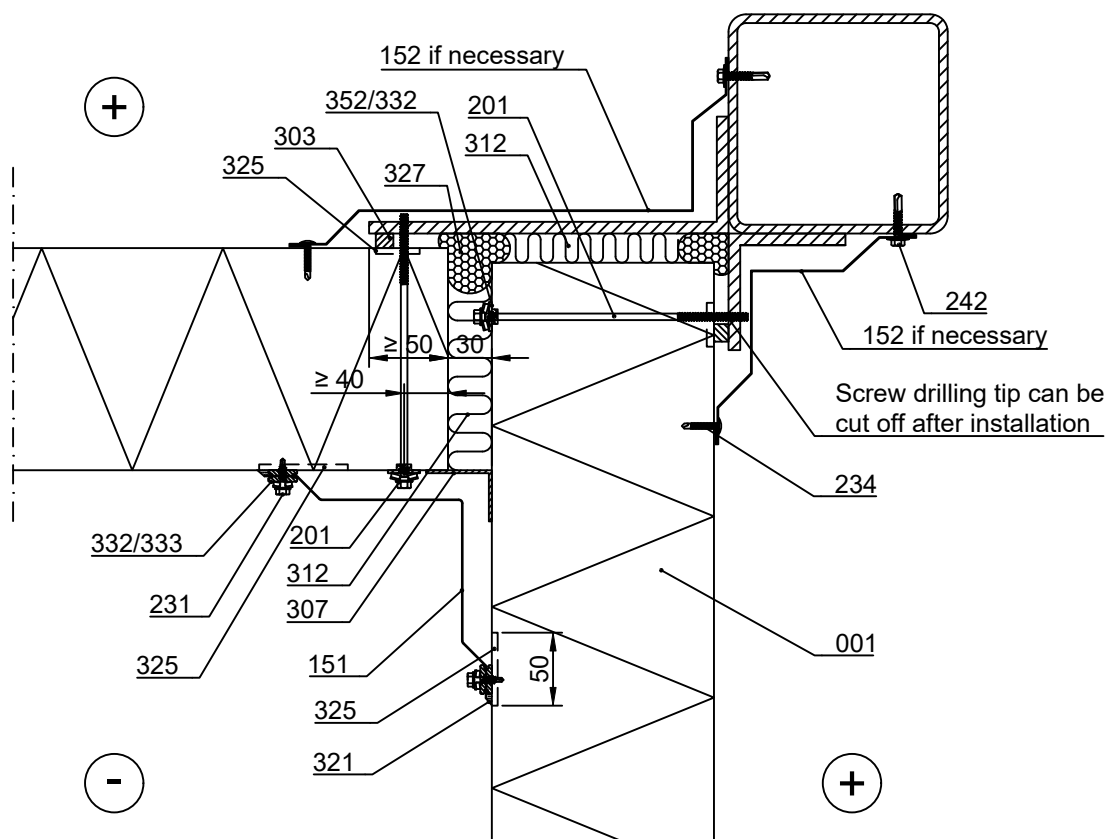




Contents of drawing

Ruukki ® Patina Panel
Horizontal installation
Internal corner, horizontal section

Date 17.05.2021	Rev. date 18.07.2024	Work nr.	Drawing nr. nSPBC05-1E-EN
Drawn by Ruukki	Rev.		
Scale 1:5	Building		File nr.



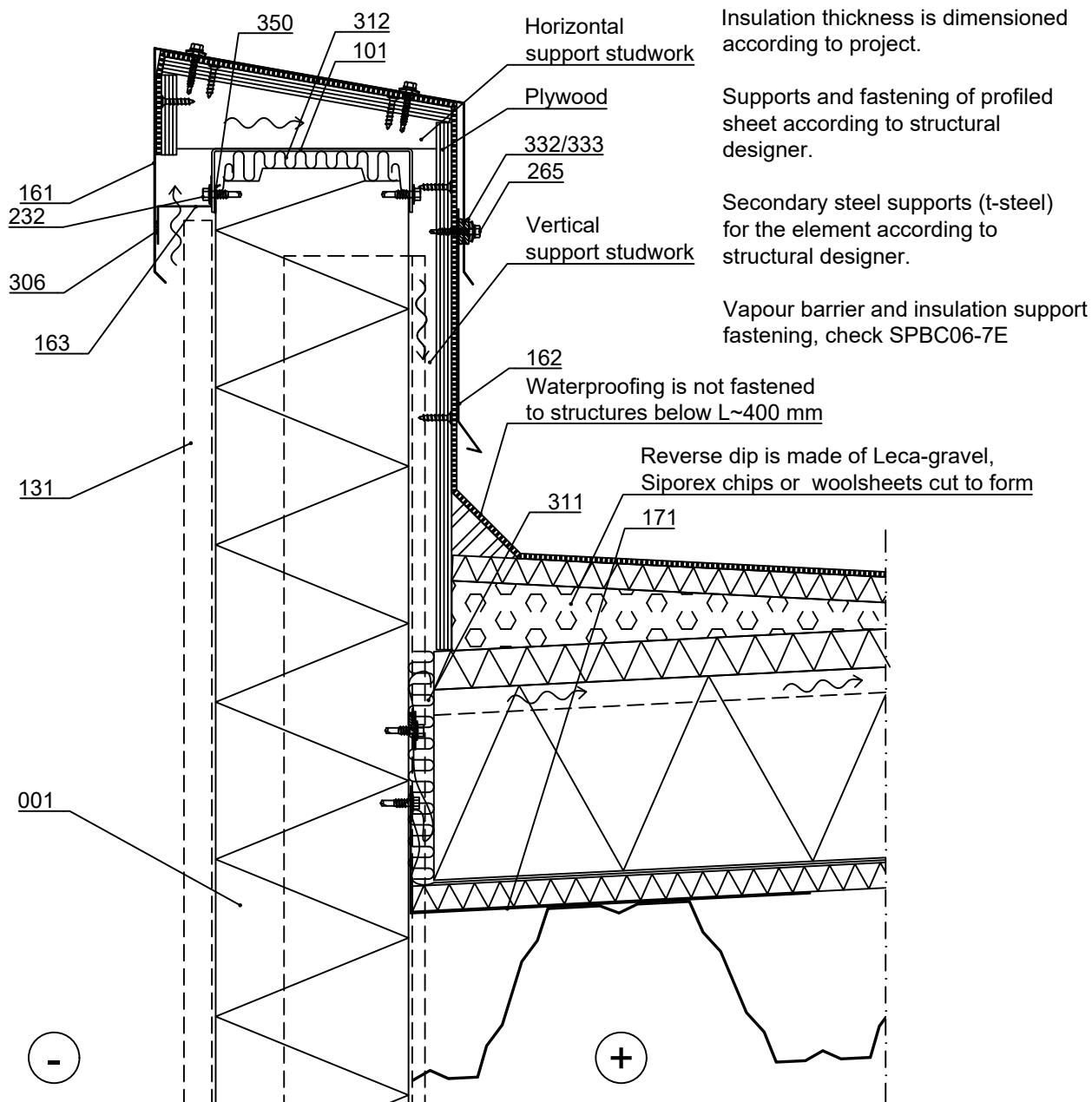
- ☐ 001. Ruukki ® Patina Panel
- ☐ 151. COR-TEN internal corner flashing
- ☐ 152. Internal corner flashing, t = 0.6 mm, according to project
- ☐ 201. Self-drilling element screw, washer with sealing *
- ☐ 231. Flashing fastener, washer with sealing *
- ☐ 234. Flat head flashing fastener
- ☐ 242. Fastener screw, without washer
- ☐ 303. /EA3SS1210/ Sealing tape
- ☐ 307. /EA3JSN7525/ Joint sealing Nordic
- ☐ 312. Mineral wool batten
- ☐ 321. /EA3SM312___/ Sealing compound
- ☐ 325. /EA3SM312___/ Sealing compound during installation to outer female groove in length equivalent to vertical joint flashing width and inner female groove from panel end to sealing
- ☐ 327. Elastic polyurethane foam
- ☐ 332. /CA3SP814/ Separating piece EPDM
- ☐ /333. /CA3SE410/ Separating strip EPDM
- ☐ 352. Lead-in rubber grommet

☒ Ruukki's delivery

*Screw material stainless steel

Copyright © Ruukki Construction Oy. Allowed only for designs with Ruukki's products.

Date 17.05.2021	Rev. date	Work nr.	Drawing nr. nSPBC06-1E-EN
Drawn by Ruukki	Rev.		
Scale 1:5	Building		File nr.



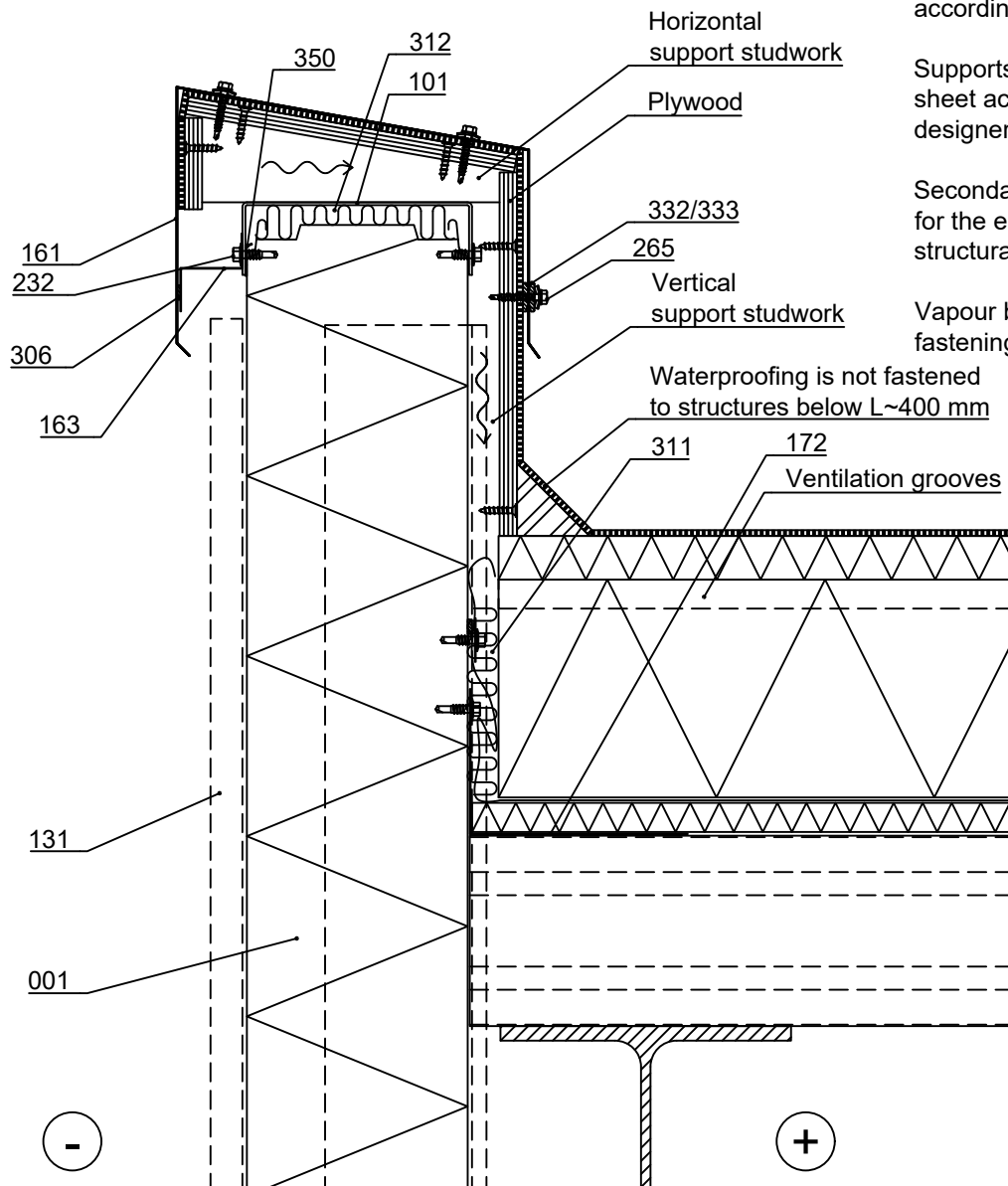
- ☐ 001. Ruukki ® Patina Panel
- ☐ 101. /EA1D___/ Purlin
- ☐ 131. COR-TEN vertical joint flashing
- ☐ 161. COR-TEN eave flashing, t = 0.7 mm, acc. to project
- ☐ 162. Cover flashing, t = 0.6 mm, according to project
- ☐ 163. Perforated storm flashing, t = 0.6 mm, acc. to project
- ☐ 171. Insulation support flashing, t = 0.6 mm, according to project

- ☐ 232. Flashing fastener, without washer *
- ☐ 265. Fastener screw to wood, washer with sealing *
- ☐ 306. ISO-BUTYL self adhesive tape 2x10 mm
- ☐ 311. Mineral wool
- ☐ 312. Mineral wool batten
- ☐ 332. /CA3SP814/ Separating piece EPDM
- ☐ /333. /CA3SE410/ Separating strip EPDM
- ☐ 350. PVC tape (between purlin and external facing of the panel)

☒ Ruukki's delivery

*Screw material stainless steel

Date 17.05.2021	Rev. date	Work nr.	Drawing nr. nSPBC06-2E-EN
Drawn by Ruukki	Rev.		
Scale 1:5	Building		File nr.



Insulation thickness is dimensioned according to project.

Supports and fastening of profiled sheet according to structural designer.

Secondary steel supports (t-steel) for the element according to structural designer.

Vapour barrier and insulation support fastening, see SPBC06-7E

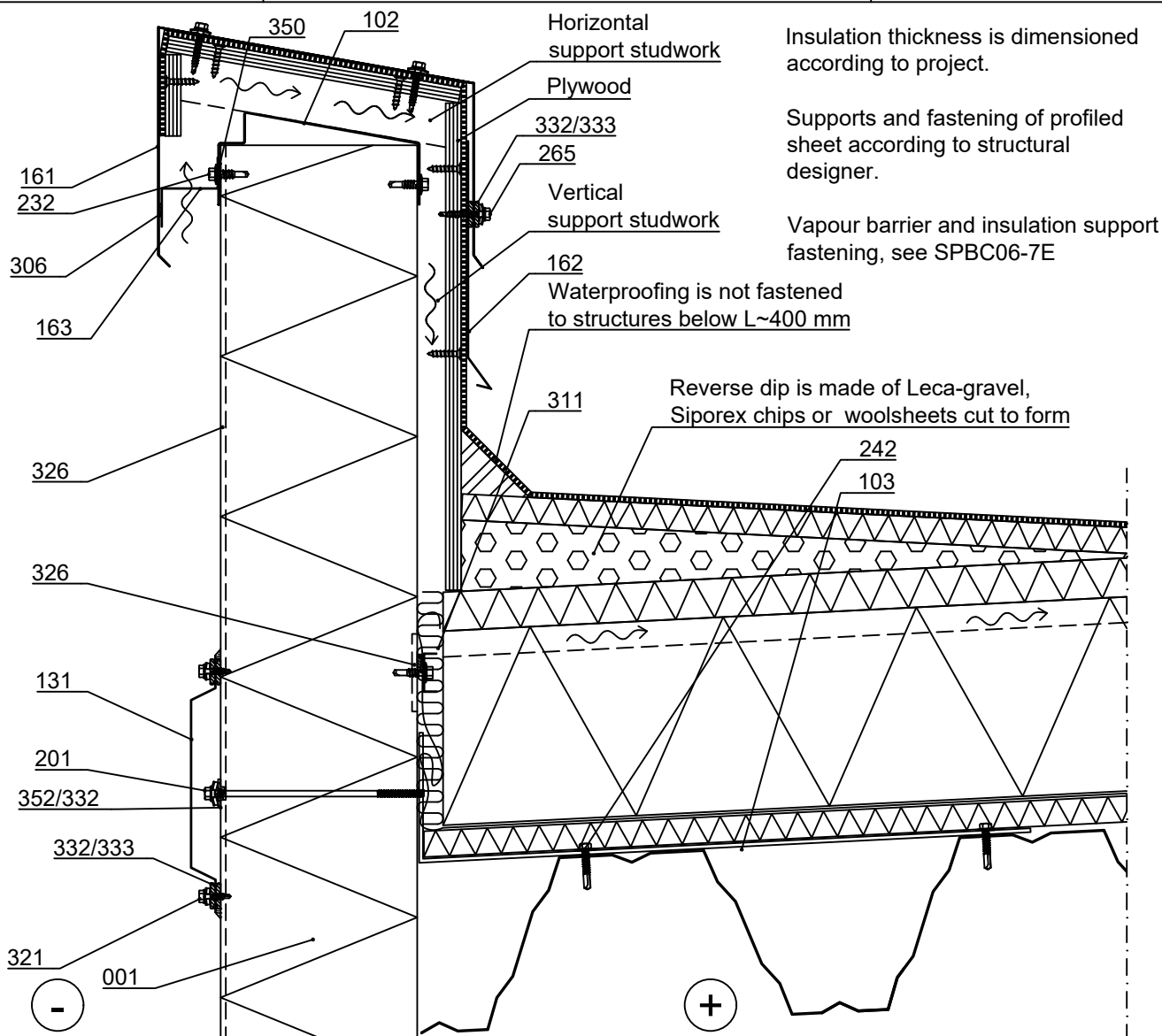
- ☐ 001. Ruukki ® Patina Panel
- ☐ 101. /EA1D___/ Purlin
- ☐ 131. COR-TEN vertical joint flashing
- ☐ 161. COR-TEN eave flashing, t = 0.7 mm, acc. to project
- ☐ 163. Perforated storm flashing, t = 0.6 mm, acc. to project
- ☐ 172. Insulation support flashing, t = 0.6 mm, according to project
- ☐ 232. Flashing fastener, without washer *

- ☐ 265. Fastener screw to wood, washer with sealing *
- ☐ 306. ISO-BUTYL self adhesive tape 2x10 mm
- ☐ 311. Mineral wool
- ☐ 312. Mineral wool batten
- ☐ 332. /CA3SP814/ Separating piece EPDM
- ☐ /333. /CA3SE410/ Separating strip EPDM
- ☐ 350. PVC tape (between purlin and external facing of the panel)

☒ Ruukki's delivery

*Screw material stainless steel

Date 17.05.2021	Rev. date	Work nr.	Drawing nr. nSPBC06-3E-EN
Drawn by Ruukki	Rev.		
Scale 1:5	Building		File nr.

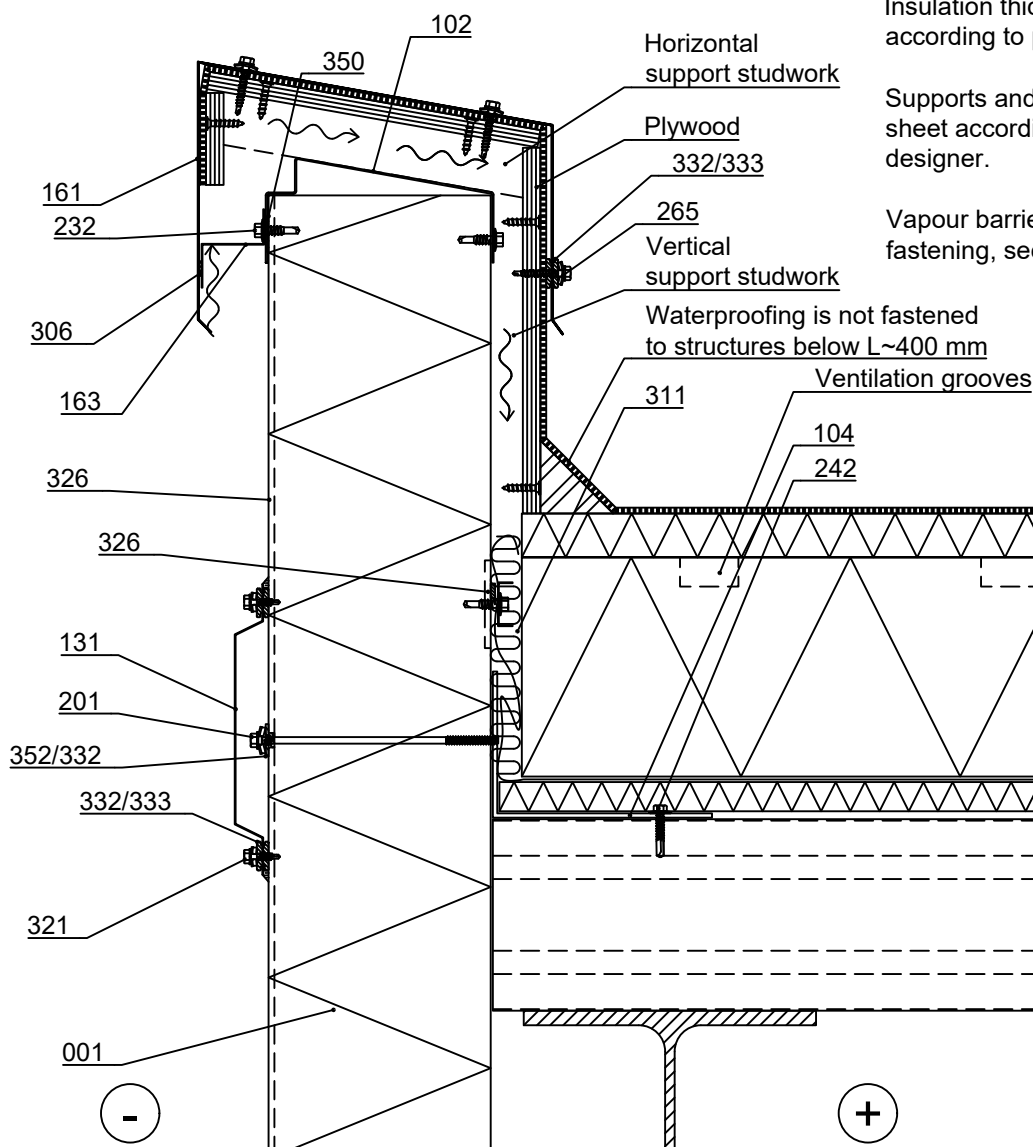


- | | |
|--|--|
| <ul style="list-style-type: none"> <input type="checkbox"/> 001. Ruukki ® Patina Panel <input type="checkbox"/> 102. /EA1EP___/ Purlin <input type="checkbox"/> 103. Flashing for fastening / insulation support flashing, t=3 mm, according to project <input type="checkbox"/> 135. COR-TEN flashing <input type="checkbox"/> 161. Eave flashing, t = 0.6 mm, according to project <input type="checkbox"/> 162. Cover flashing, t = 0.6 mm, according to project <input type="checkbox"/> 163. Perforated storm flashing, t = 0.6 mm, acc. to project <input type="checkbox"/> 201. Self-drilling element screw, washer with sealing * <input type="checkbox"/> 231. Flashing fastener, washer with sealing * <input type="checkbox"/> 232. Flashing fastener, without washer * <input type="checkbox"/> 242. Fastener screw, without washer * | <ul style="list-style-type: none"> <input type="checkbox"/> 265. Fastener screw to wood, washer with sealing * <input type="checkbox"/> 306. ISO-BUTYL self adhesive tape 2x10 mm <input type="checkbox"/> 311. Mineral wool <input type="checkbox"/> 321. /EA3SM312___/ Sealing compound <input type="checkbox"/> 326. /EA3SM312___/ Sealing compound during inst. to outer male groove full length of element and inner female groove 60 mm in length of element <input type="checkbox"/> 332. /CA3SP814/ Separating piece EPDM /333. /CA3SE410/ Separating strip EPDM <input type="checkbox"/> 350. PVC tape (between purlin and external facing of the panel) <input type="checkbox"/> 352. Lead-in rubber grommet |
|--|--|

☒ Ruukki's delivery

*Screw material stainless steel

Date 17.05.2021	Rev. date	Work nr.	Drawing nr. nSPBC06-4E-EN
Drawn by Ruukki	Rev.		
Scale 1:5	Building		File nr.



Insulation thickness is dimensioned according to project.

Supports and fastening of profiled sheet according to structural designer.

Vapour barrier and insulation support fastening, see SPBC06-7E

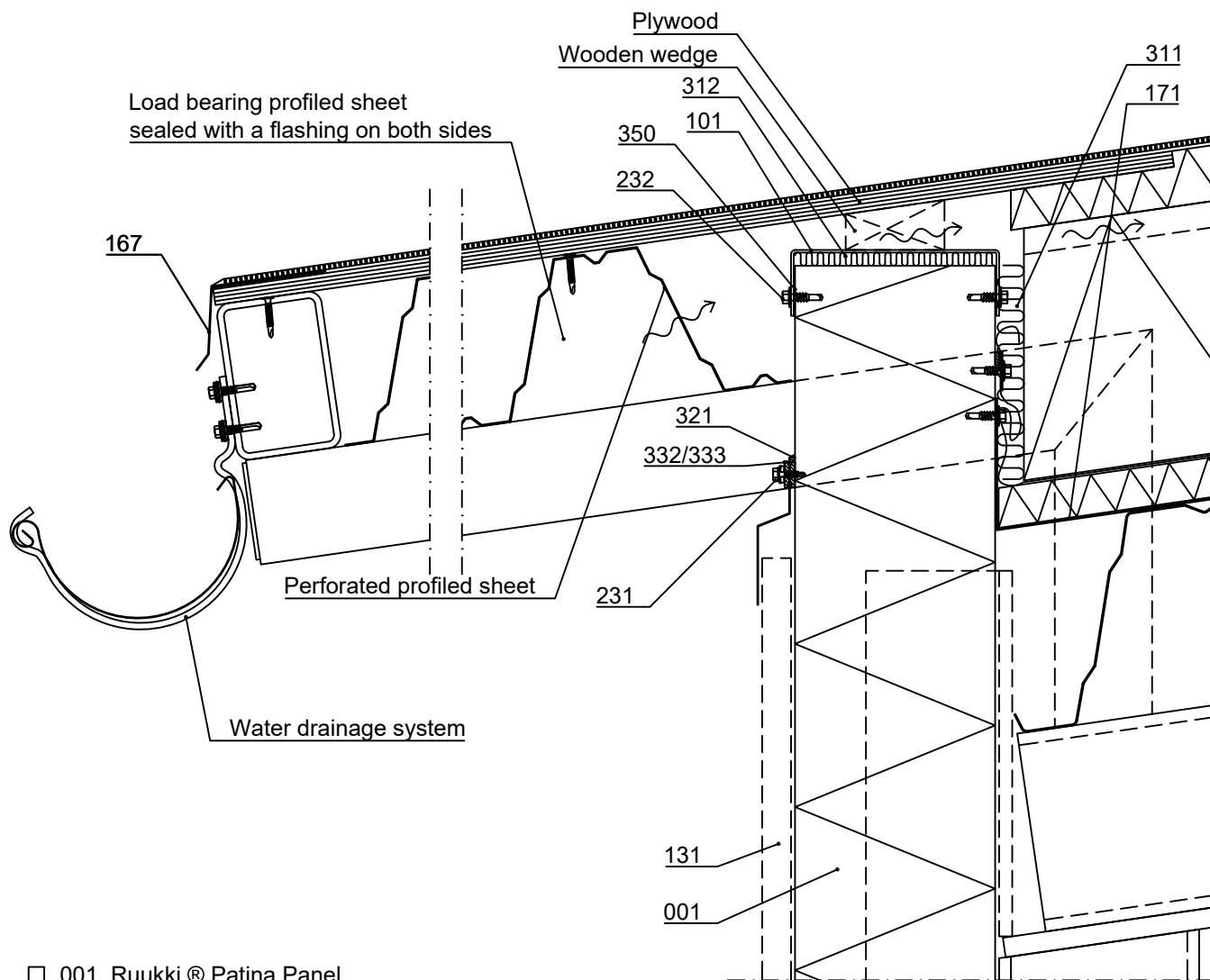
- ☐ 001. Ruukki ® Patina Panel
- ☐ 102. /EA1EP___/ Purlin
- ☐ 104. Flashing for fastening / insulation support flashing, t=3 mm, according to project
- ☐ 135. COR-TEN flashing
- ☐ 161. Eave flashing, t = 0.6 mm, according to project
- ☐ 163. Storm flashing, t = 0.6 mm, according to project
- ☐ 201. Self-drilling element screw, washer with sealing *
- ☐ 231. Flashing fastener, washer with sealing *
- ☐ 232. Flashing fastener, without washer *
- ☐ 242. Fastener screw, without washer *

- ☐ 265. Fastener screw to wood, washer with sealing *
- ☐ 306. ISO-BUTYL self adhesive tape 2x10 mm
- ☐ 311. Mineral wool
- ☐ 321. /EA3SM312___/ Sealing compound
- ☐ 326. /EA3SM312___/ Sealing compound during inst. to outer male groove full length of element and inner female groove 60 mm in length of element
- ☐ 332. /CA3SP814/ Separating piece EPDM
- ☐ 333. /CA3SE410/ Separating strip EPDM
- ☐ 350. PVC tape (between purlin and external facing of the panel)
- ☐ 352. Lead-in rubber grommet

☒ Ruukki's delivery

*Screw material stainless steel

Date 17.05.2021	Rev. date	Work nr.	Drawing nr. nSPBC06-5E-EN
Drawn by Ruukki	Rev.		
Scale 1:5	Building		File nr.



- ☐ 001. Ruukki ® Patina Panel
- ☐ 101. /EA1D___/ Purlin
- ☐ 131. COR-TEN vertical joint flashing
- ☐ 164. COR-TEN storm flashing, t = 0.7 mm, according to project
- ☐ 167. COR-TEN eave flashing, t = 0.7 mm, according to project
- ☐ 171. Insulation support flashing, t = 0.6 mm, according to project
- ☐ 231. Flashing fastener, washer with sealing *
- ☐ 232. Flashing fastener, without washer *
- ☐ 311. Mineral wool
- ☐ 312. Mineral wool batten
- ☐ 321. /EA3SM312___/ Sealing compound
- ☐ 332. /CA3SP814/ Separating piece EPDM
- ☐ 333. /CA3SE410/ Separating strip EPDM
- ☐ 350. PVC tape (between purlin and external facing of the panel)

☒ Ruukki's delivery

*Screw material stainless steel

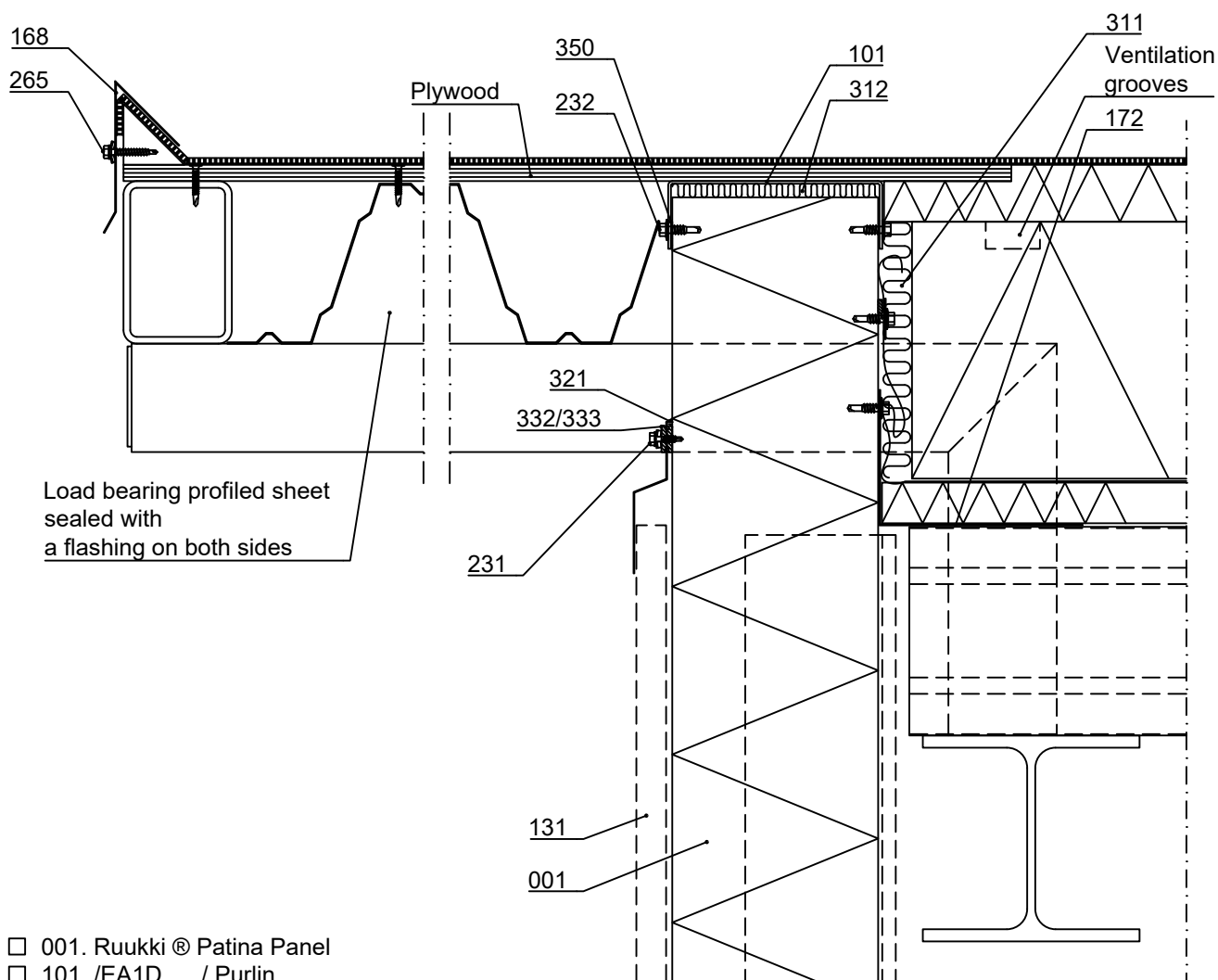
Insulation thickness is dimensioned according to project.

Supports and fastening of profiled sheet according to structural designer.

Element is cut at the point where it intersects with the steel structure. Vapour barrier is taped around the steel.

Vapour barrier and insulation support fastening, see SPBC06-7E

Date 17.05.2021	Rev. date	Work nr.	Drawing nr. nSPBC06-6E-EN
Drawn by Ruukki	Rev.		
Scale 1:5	Building		File nr.



- ☐ 001. Ruukki ® Patina Panel
- ☐ 101. /EA1D___/ Purlin
- ☐ 131. COR-TEN vertical joint flashing
- ☐ 164. COR-TEN storm flashing, t = 0.7 mm, according to project
- ☐ 168. COR-TEN eave flashing, t = 0.7 mm, according to project
- ☐ 172. Insulation support flashing, t = 0.6 mm, according to project
- ☐ 231. Flashing fastener, washer with sealing *
- ☐ 232. Flashing fastener, without washer *
- ☐ 265. Fastener screw to wood, washer with sealing *
- ☐ 311. Mineral wool
- ☐ 312. Mineral wool batten
- ☐ 321. /EA3SM312___/ Sealing compound
- ☐ 332. /CA3SP814/ Separating piece EPDM
- ☐ 333. /CA3SE410/ Separating strip EPDM
- ☐ 350. PVC tape (between purlin and external facing of the panel)

☒ Ruukki's delivery

*Screw material stainless steel

Insulation thickness is dimensioned according to project.

Supports and fastening of profiled sheet according to structural designer.

Element is cut at the point where it intersects with the steel structure. Vapour barrier is taped around the steel.

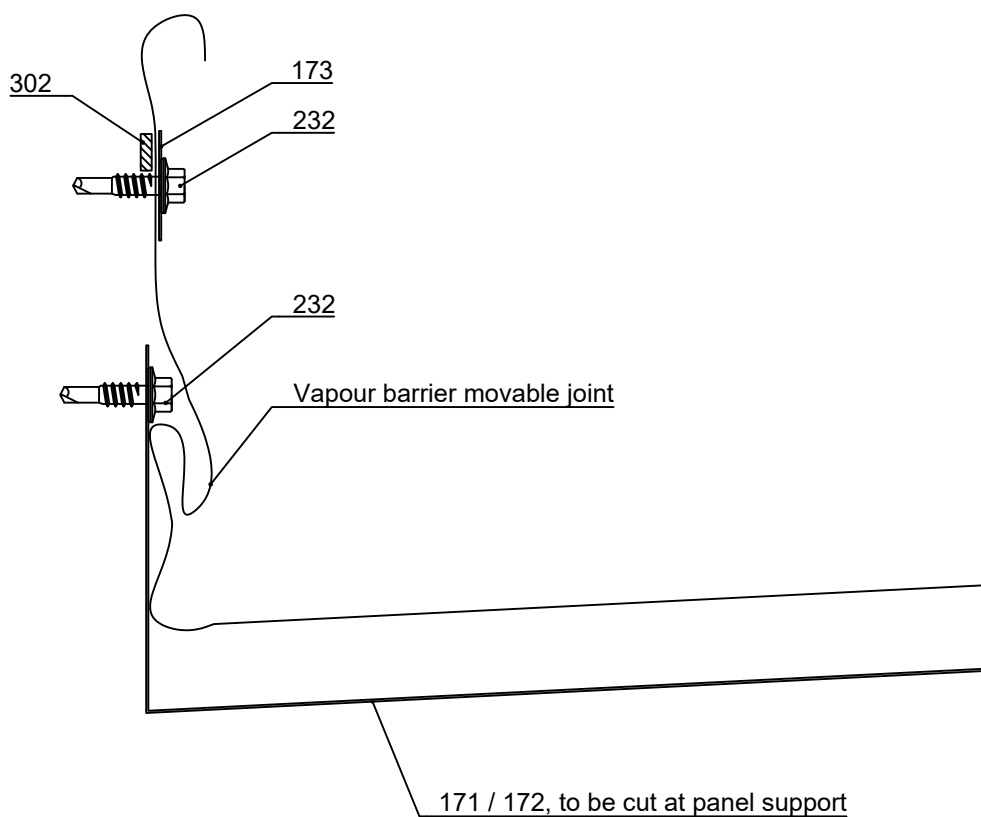
Vapour barrier and insulation support fastening, see SPBC06-7E



Contents of drawing

Ruukki ® Patina Panel
Horizontal installation, Vapour barrier
and insulation support flashing fastening

Date 17.05.2021	Rev. date	Work nr.	Drawing nr. nSPBC06-7E-EN
Drawn by Ruukki	Rev.		
Scale 1:2	Building		File nr.



- ☐ 171. Insulation support flashing, t = 0.6 mm, according to project
- ☐ 172. Insulation support flashing, t = 0.6 mm
- ☐ 173. Flat flashing to vapour barrier fastening, t = 0.6 mm, according to project
- ☐ 232. Flashing fastener, without washer
- ☐ 302. /EA3SS410/ Sealing tape, between panel and vapour barrier

☒ Ruukki's delivery

Copyright © Ruukki Construction Oy. Allowed only for designs with Ruukki's products.



Contents of drawing

Ruukki ® Patina Panel
Horizontal installation
Window, vertical section

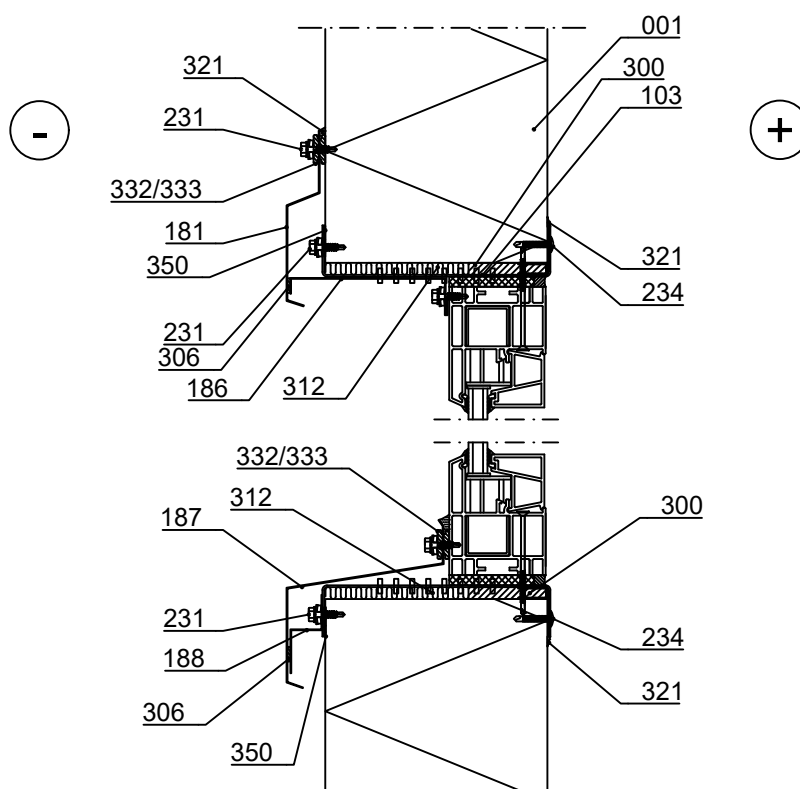
Date 17.05.2021	Rev. date 22.09.2021	Work nr.	Drawing nr. nSPBC07-1E-EN
Drawn by Ruukki	Rev.		
Scale 1:5	Building		File nr.

Note! Openings must be taken into account in dimensioning of elements.

Note! When thermal purlin (window purlin, for example) is used around the opening, the thermal holes of the purlin must be sealed with tape (aluminium tape, for example) from the inside of the purlin to ensure tightness of the purlin.

Note! Remember to seal the grooves of the elements joining the window during the installation with elastic sealant to outer female groove to length equivalent to vertical joint flashing width).

Supporting structures, if necessary, according to structural designer .



- | | |
|--|---|
| <input type="checkbox"/> 001. Ruukki ® Patina Panel | <input type="checkbox"/> 300. /EA3SWE54318/ Expandable sealing (plastic tape facing inside) |
| <input type="checkbox"/> 103. /EA1W___/ Window purlin | <input type="checkbox"/> 306. ISO-BUTYL self adhesive tape 2x10 mm |
| <input type="checkbox"/> 181. COR-TEN Drip flashing, t = 0.7 mm, acc. to project | <input type="checkbox"/> 312. /EAWS___/ Mineral wool band |
| <input type="checkbox"/> 186. Support- / cover flashing, t = 0.6 mm, acc. to project | <input type="checkbox"/> 321. /EA3SM312___/ Sealing compound |
| <input type="checkbox"/> 187. COR-TEN External window sill, t=0.7 mm | <input type="checkbox"/> 332. /CA3SP814/ Separating piece EPDM |
| <input type="checkbox"/> 188. Support- / cover flashing, t = 0.6 mm, acc. to project | <input type="checkbox"/> 333. /CA3SE410/ Separating strip EPDM |
| <input type="checkbox"/> 231. Flashing fastener, washer with sealing * | <input type="checkbox"/> 350. PVC tape |
| <input type="checkbox"/> 234. Flat head flashing fastener | |

☒ Ruukki's delivery

*Screw material stainless steel

Copyright © Ruukki Construction Oy. Allowed only for designs with Ruukki's products.



Contents of drawing

Ruukki ® Patina Panel
Horizontal installation
Window, horizontal section

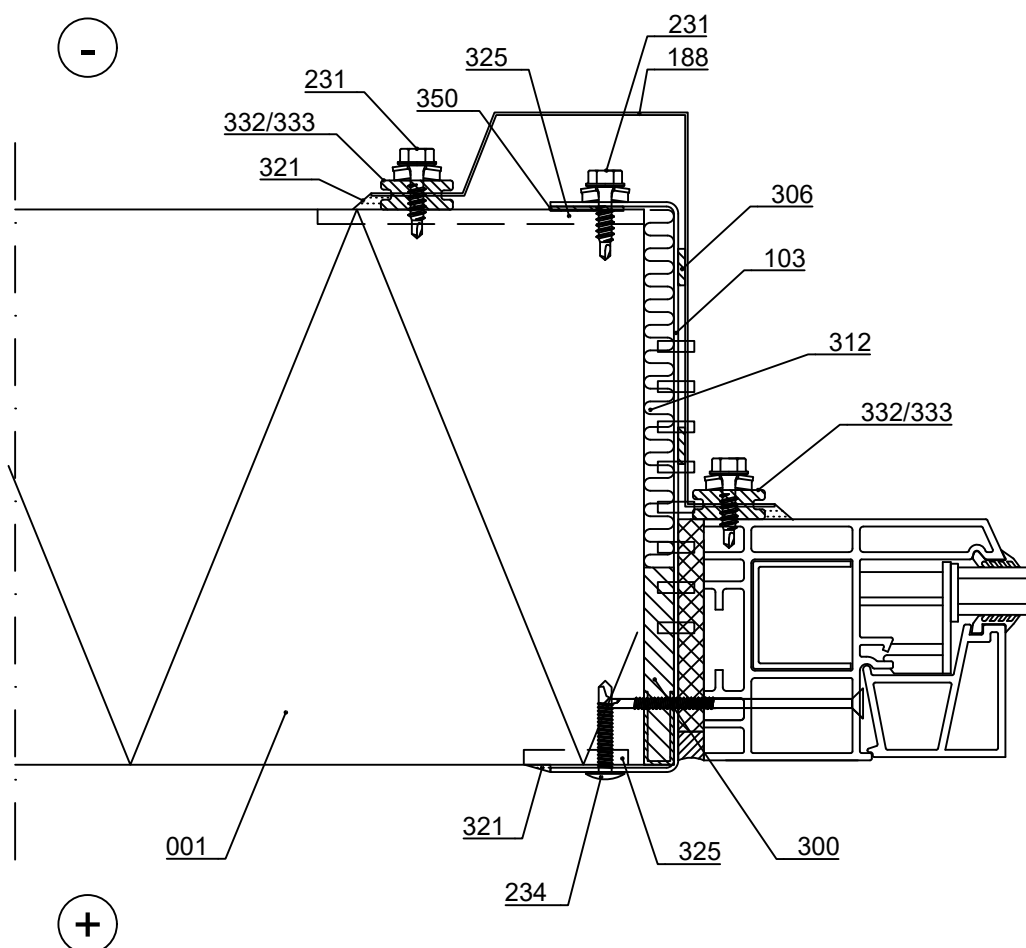
Date 17.05.2021	Rev. date 22.09.2021	Work nr.	Drawing nr. nSPBC07-2E-EN
Drawn by Ruukki	Rev.		
Scale 1:2	Building		File nr.

Note! Openings must be taken into account in dimensioning of elements.

Note! When thermal purlin (window purlin, for example) is used around the opening, the thermal holes of the purlin must be sealed with tape (aluminium tape, for example) from the inside of the purlin to ensure tightness of the purlin.

Note! Remember to seal the grooves of the elements joining the window during the installation with elastic sealant to outer female groove to length equivalent to vertical joint flashing width.

Supporting structures, if necessary, according to structural designer.



- | | |
|---|---|
| <input type="checkbox"/> 001. Ruukki ® Patina Panel | <input type="checkbox"/> 306. ISO-BUTYL self adhesive tape 2x10 mm |
| <input type="checkbox"/> 103. /EA1W___/ Window purlin | <input type="checkbox"/> 312. /EAWS___/ Mineral wool band |
| <input type="checkbox"/> 188. COR-TEN Cover flashing, t = 0.7 mm, acc. to project | <input type="checkbox"/> 321. /EA3SM312___/ Sealing compound |
| <input type="checkbox"/> 231. Flashing fastener, washer with sealing * | <input type="checkbox"/> 325. /EA3SM312___/ Sealing compound during inst. |
| <input type="checkbox"/> 234. Flat head flashing fastener | to outer and inner female grooves |
| <input type="checkbox"/> 300. /EA3SWE54318/ Expandable sealing | <input type="checkbox"/> 332. /CA3SP814/ Separating piece EPDM |
| (plastic tape facing inside) | <input type="checkbox"/> 333. /CA3SE410/ Separating strip EPDM |
| | <input type="checkbox"/> 350. PVC tape |

☒ Ruukki's delivery

*Screw material stainless steel



Contents of drawing

Ruukki ® Patina Panel
Horizontal installation, system window,
vertical section, large window, supporting structure

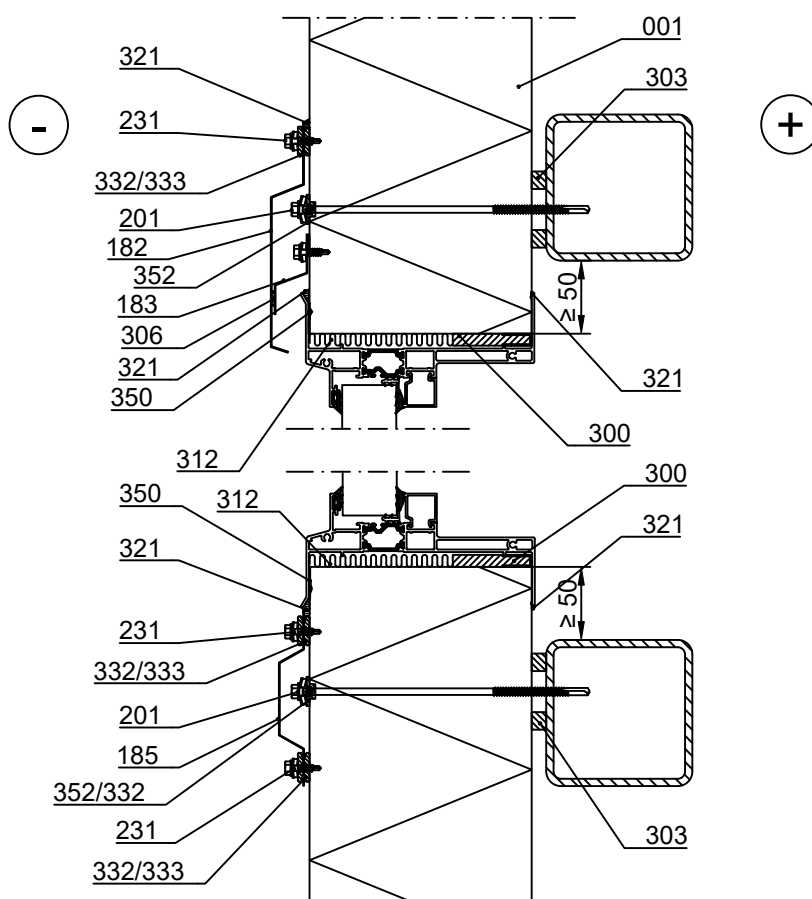
Date 17.05.2021	Rev. date 22.09.2021	Work nr.	Drawing nr. nSPBC07-3E-EN
Drawn by Ruukki	Rev.		
Scale 1:5	Building		File nr.

Note! Openings must be taken into account in dimensioning of elements.

Note! System window is installed during installation of elements. Fastening according to window manufacturers instructions.

Note! Remember to seal the grooves of the elements joining the window during the installation with sealant to outer female groove to length equivalent to vertical joint flashing and inner female groove in length of sealing (SPBC02-1E).

Supporting structures according to structural designer.



- | | |
|---|--|
| <input type="checkbox"/> 001. Ruukki ® Patina Panel | <input type="checkbox"/> 303. /EA3SS1210/ Sealing tape |
| <input type="checkbox"/> 182. COR-TEN Drip flashing, t = 0.7 mm, acc. to project | <input type="checkbox"/> 306. ISO-BUTYL self adhesive tape 2x10 mm |
| <input type="checkbox"/> 183. Storm flashing, t = 0.6 mm, according to project | <input type="checkbox"/> 312. /EAWS___/ Mineral wool band |
| <input type="checkbox"/> 185. COR-TEN Cover flashing, t = 0.7 mm, acc. to project | <input type="checkbox"/> 321. /EA3SM312___/ Sealing compound |
| <input type="checkbox"/> 201. Self-drilling element screw, washer with sealing * | <input type="checkbox"/> 332. /CA3SP814/ Separating piece EPDM |
| <input type="checkbox"/> 231. Flashing fastener, washer with sealing * | <input type="checkbox"/> 333. /CA3SE410/ Separating strip EPDM |
| <input type="checkbox"/> 300. /EA3SWE54318/ Expandable sealing (plastic tape facing inside) | <input type="checkbox"/> 350. PVC tape |
| | <input type="checkbox"/> 352. Lead-in rubber grommet |

☒ Ruukki's delivery

*Screw material stainless steel

Copyright © Ruukki Construction Oy. Allowed only for designs with Ruukki's products.



Contents of drawing

Ruukki ® Patina Panel
Horizontal installation, system window,
horizontal section, large window

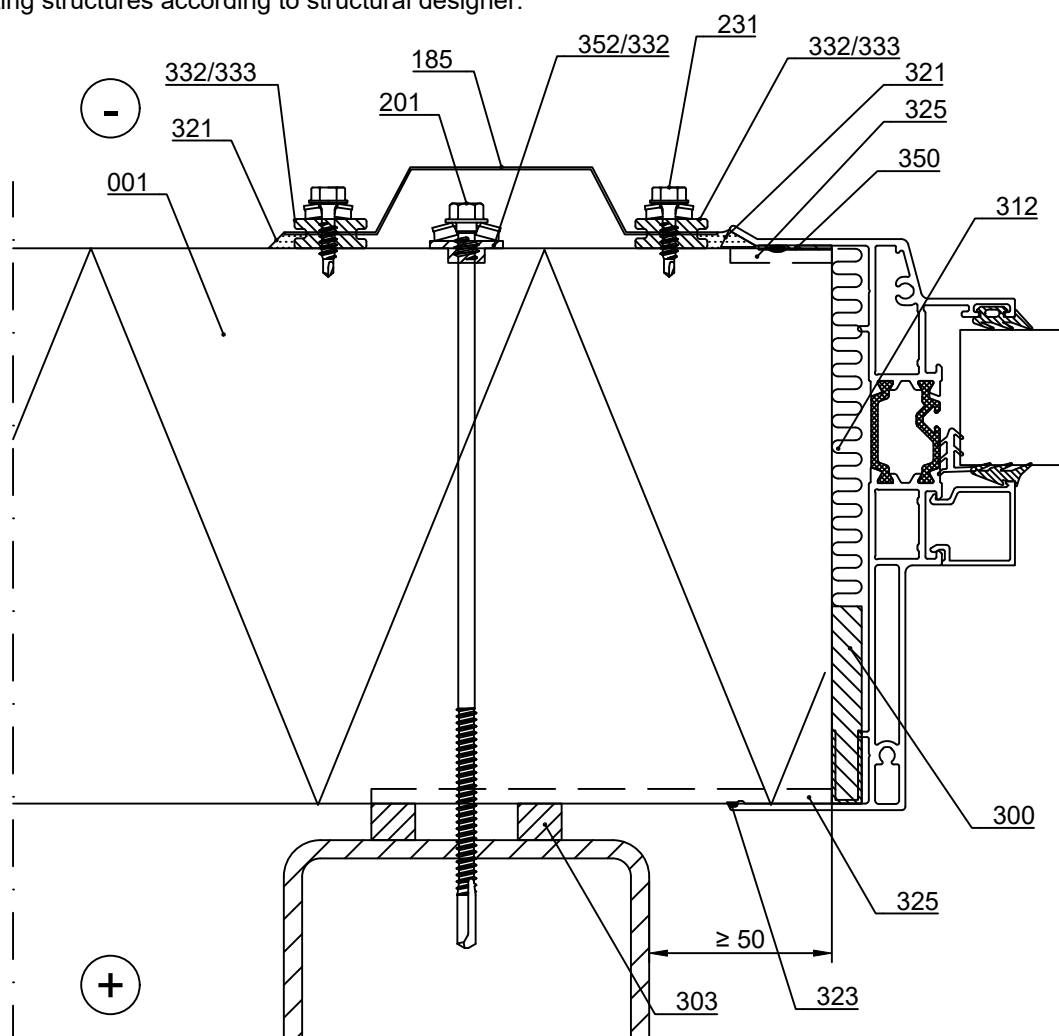
Date 17.05.2021	Rev. date 22.09.2021	Work nr.	Drawing nr. nSPBC07-4E-EN
Drawn by Ruukki	Rev.		
Scale 1:2	Building		File nr.

Note! Openings must be taken into account in dimensioning of elements.

Note! System window is installed during installation of elements. Fastening according to window manufacturers instructions.

Note! Remember to seal the grooves of the elements joining the window during the installation with sealant to outer female groove to length equivalent to vertical joint flashing and inner female groove in length of sealing (SPBC02-1E).

Supporting structures according to structural designer.



- | | |
|---|---|
| <input type="checkbox"/> 001. Ruukki ® Patina Panel | <input type="checkbox"/> 312. /EAWS___/ Mineral wool band |
| <input type="checkbox"/> 185. COR-TEN cover flashing, t = 0.7 mm, acc. to project | <input type="checkbox"/> 321. /EA3SM312___/ Sealing compound |
| <input type="checkbox"/> 201. Self-drilling element screw, washer with sealing * | <input type="checkbox"/> 325. /EA3SM312___/ Sealing compound during inst. |
| <input type="checkbox"/> 231. Flashing fastener, washer with sealing * | <input type="checkbox"/> to outer and inner female grooves |
| <input type="checkbox"/> 300. /EA3SWE54318/ Expandable sealing | <input type="checkbox"/> 332. /CA3SP814/ Separating piece EPDM |
| <input type="checkbox"/> (plastic tape facing inside) | <input type="checkbox"/> /333. /CA3SE410/ Separating strip EPDM |
| <input type="checkbox"/> 303. /EA3SS1210/ Sealing tape | <input type="checkbox"/> 350. PVC tape |
| | <input type="checkbox"/> 352. Lead-in rubber grommet |

☒ Ruukki's delivery

*Screw material stainless steel

Copyright © Ruukki Construction Oy. Allowed only for designs with Ruukki's products.



Contents of drawing

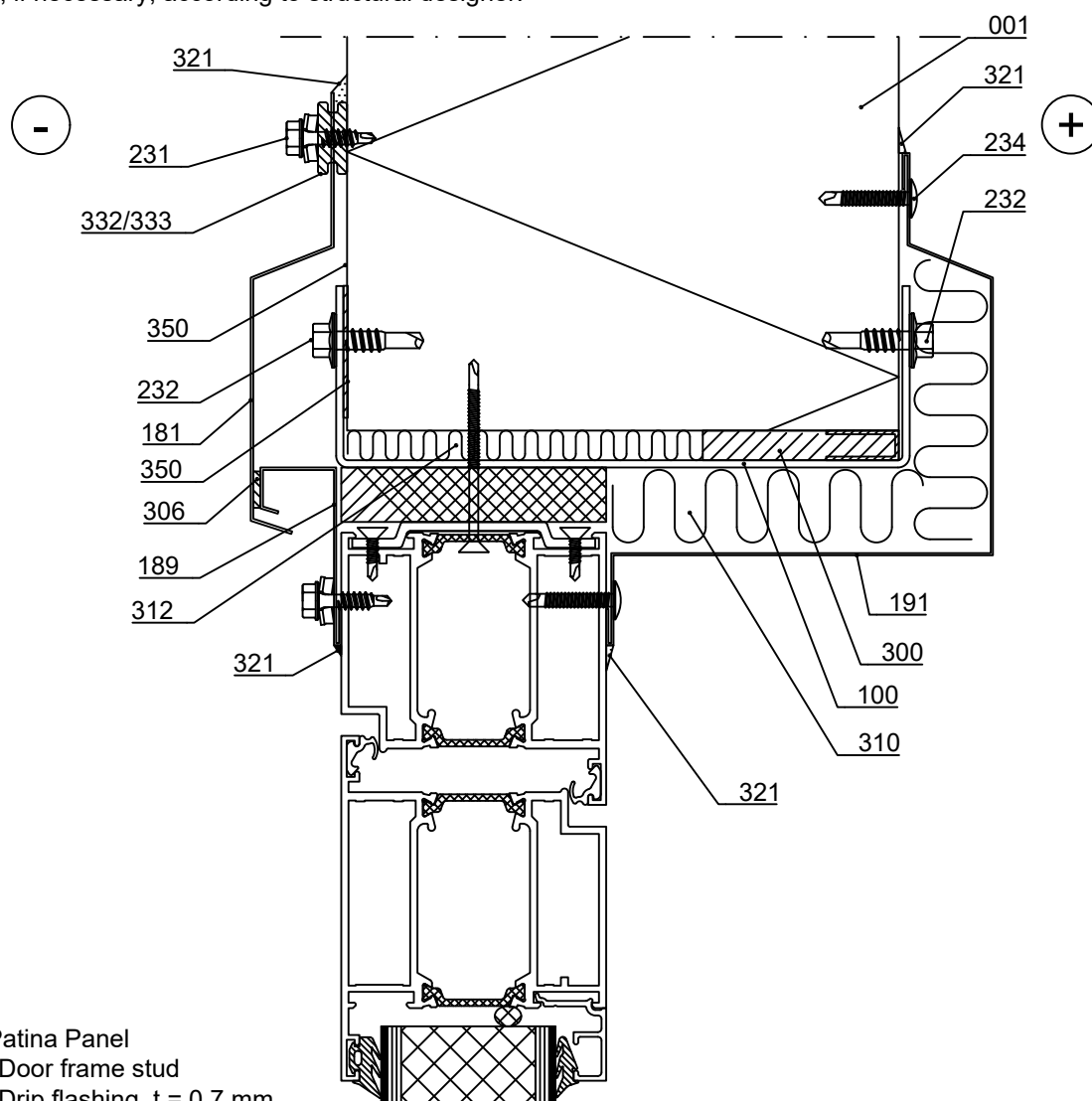
Ruukki ® Patina Panel
Horizontal installation
Door, vertical section

Date 17.05.2021	Rev. date 22.09.2021	Work nr.	Drawing nr. nSPBC08-1E-EN
Drawn by Ruukki	Rev.		
Scale 1:2	Building		File nr.

Note! Openings must be taken into account in dimensioning of elements.

Note! Remember to seal the grooves of the elements joining the door during the installation with elastic sealant to outer female groove to length equivalent to vertical joint flashing width (SPBC02-1E).

Supporting structures, if necessary, according to structural designer.



- ☐ 001. Ruukki ® Patina Panel
- ☐ 101. EA1D___/ Door frame stud
- ☐ 181. COR-TEN Drip flashing, t = 0.7 mm, according to project
- ☐ 189. Cover flashing, t = 0.6 mm, according to project
- ☐ 191. Cover flashing, t = 0.6 mm, according to project
- ☐ 231. Flashing fastener, washer with sealing *
- ☐ 232. Flashing fastener, without washer *
- ☐ 234. Flat head flashing fastener

☒ Ruukki's delivery

- ☐ 300. /EA3SWE54318/ Expandable sealing (plastic tape facing inside)
- ☐ 306. ISO-BUTYL self adhesive tape 2x10 mm
- ☐ 310. Mineral wool
- ☐ 312. /EAWS___/ Mineral wool band
- ☐ 321. /EA3SM312___/ Sealing compound
- ☐ 332. /CA3SP814/ Separating piece EPDM
- ☐ 333. /CA3SE410/ Separating strip EPDM
- ☐ 350. PVC tape

*Screw material stainless steel

Copyright © Ruukki Construction Oy. Allowed only for designs with Ruukki's products.



Contents of drawing

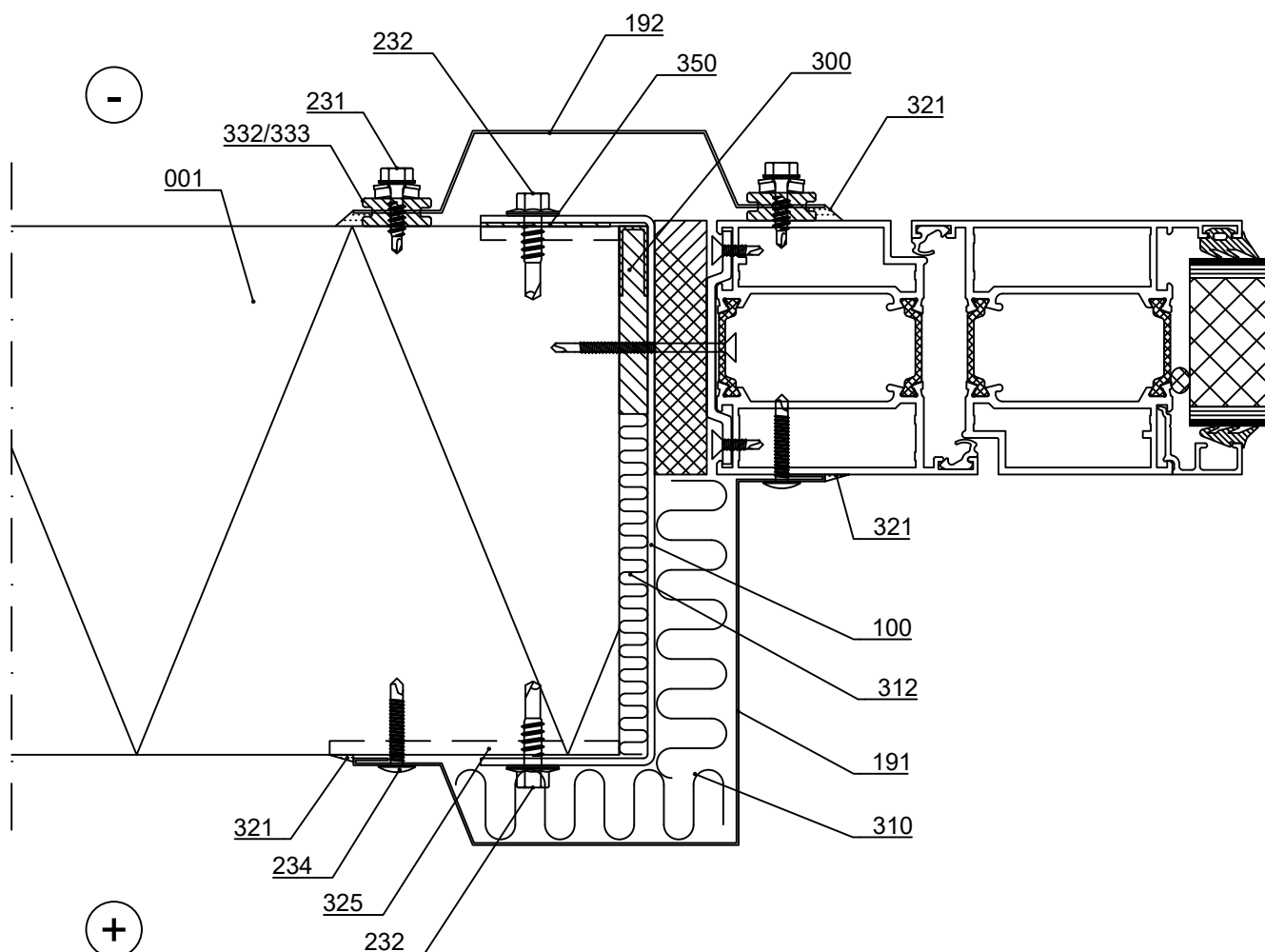
Ruukki ® Patina Panel
Horizontal installation
Door, horizontal section

Date 17.05.2021	Rev. date 22.09.2021	Work nr.	Drawing nr. nSPBC08-2E-EN
Drawn by Ruukki	Rev.		
Scale 1:2	Building		File nr.

Note! Openings must be taken into account in dimensioning of elements.

Note! Remember to seal the grooves of the elements joining the door during the installation with elastic sealant to outer female groove to length equivalent to vertical joint flashing width (SPBC02-1E).

Supporting structures, if necessary, according to structural designer.



- | | |
|---|---|
| <input type="checkbox"/> 001. Ruukki ® Patina Panel | <input type="checkbox"/> 310. Mineral wool |
| <input type="checkbox"/> 101. EA1D___/ Door frame stud | <input type="checkbox"/> 312. Mineral wool batten |
| <input type="checkbox"/> 191. Cover flashing, t = 0.6 mm, according to project | <input type="checkbox"/> 321. /EA3SM312___/ Sealing compound |
| <input type="checkbox"/> 192. COR-TEN Cover flashing, t = 0.7 mm, acc. to project | <input type="checkbox"/> 325. /EA3SM312___/ Sealing compound during inst. to outer and inner female grooves |
| <input type="checkbox"/> 231. Flashing fastener, washer with sealing * | <input type="checkbox"/> 332. /CA3SP814/ Separating piece EPDM |
| <input type="checkbox"/> 232. Flashing fastener, without washer * | <input type="checkbox"/> 333. /CA3SE410/ Separating strip EPDM |
| <input type="checkbox"/> 234. Flat head flashing fastener | <input type="checkbox"/> 350. PVC tape |
| <input type="checkbox"/> 300. /EA3SWE54318/ Expandable sealing (plastic tape facing inside) | |

☒ Ruukki's delivery

*Screw material stainless steel

Copyright © Ruukki Construction Oy. Allowed only for designs with Ruukki's products.



Contents of drawing

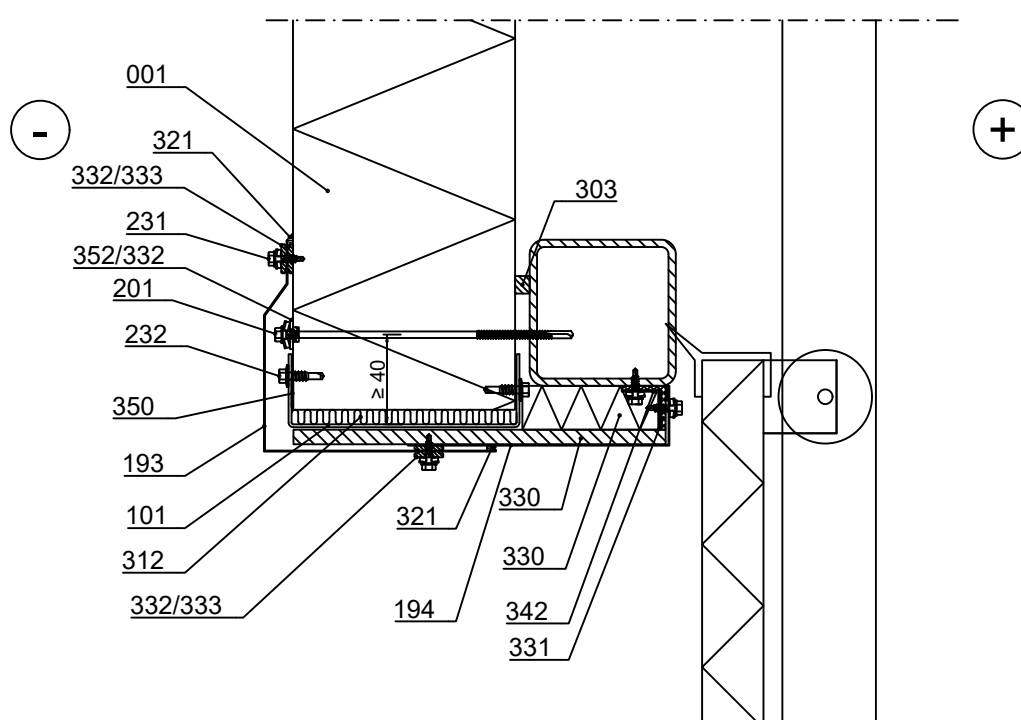
Ruukki ® Patina Panel
Horizontal installation
Overhead door, vertical section

Date 17.05.2021	Rev. date	Work nr.	Drawing nr. nSPBC08-3E-EN
Drawn by Ruukki	Rev.		
Scale 1:5	Building		File nr.

Note! Openings must be taken into account in dimensioning of elements.

Note! Remember to seal the grooves of the elements joining the door during the installation with elastic sealant to outer female groove to length equivalent to vertical joint flashing width (SPBC02-1E).

Supporting structures according to structural designer.



- | | |
|---|--|
| <input type="checkbox"/> 001. Ruukki ® Patina Panel | <input type="checkbox"/> 312. Mineral wool batten |
| <input type="checkbox"/> 101. EA1D___/ Door frame stud | <input type="checkbox"/> 321. /EA3SM312___/ Sealing compound |
| <input type="checkbox"/> 193. COR-TEN drip- / cover flashing, t = 0.7 mm, acc. to project | <input type="checkbox"/> 330. PU insulation |
| <input type="checkbox"/> 194. Drip- / cover flashing, t = 0.6 mm, acc. to project | <input type="checkbox"/> 331. EPDM sealing |
| <input type="checkbox"/> 201. Self-drilling element screw, washer with sealing * | <input type="checkbox"/> 332. /CA3SP814/ Separating piece EPDM |
| <input type="checkbox"/> 231. Flashing fastener, washer with sealing * | <input type="checkbox"/> 333. /CA3SE410/ Separating strip EPDM |
| <input type="checkbox"/> 232. Flashing fastener, without washer * | <input type="checkbox"/> 342. L-profile |
| <input type="checkbox"/> 303. /EA3SS1210/ Sealing tape | <input type="checkbox"/> 350. PVC tape |
| | <input type="checkbox"/> 352. Lead-in rubber grommet |

☒ Ruukki's delivery

*Screw material stainless steel

Copyright © Ruukki Construction Oy. Allowed only for designs with Ruukki's products.



Contents of drawing

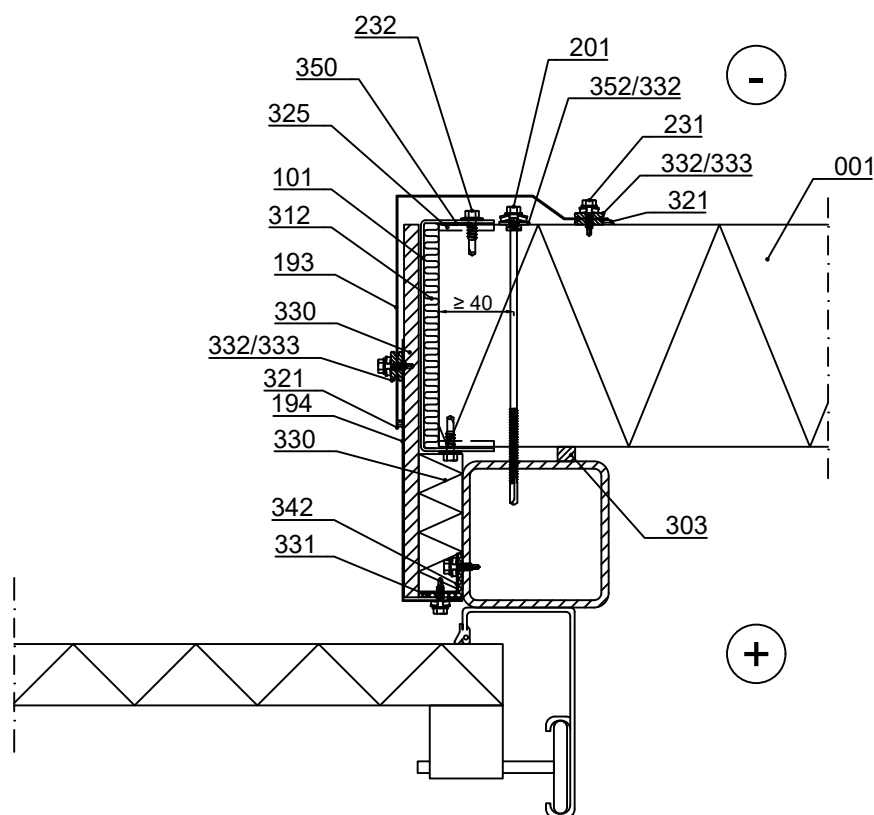
Ruukki ® Patina Panel
Horizontal installation
Overhead door, horizontal section

Date 17.05.2021	Rev. date	Work nr.	Drawing nr. nSPBC08-4E-EN
Drawn by Ruukki	Rev.		
Scale 1:5	Building		File nr.

Note! Openings must be taken into account in dimensioning of elements.

Note! Remember to seal the grooves of the elements joining the door during the installation with elastic sealant to outer female groove to length equivalent to vertical joint flashing width (SPBC02-1E).

Supporting structures according to structural designer.



- ☐ 001. Ruukki ® Patina Panel
- ☐ 101. EA1D___/ Door frame stud
- ☐ 193. COR-TEN Cover flashing, t = 0.7 mm, acc. to project
- ☐ 194. Drip- / cover flashing, t = 0.6 mm, acc. to project
- ☐ 201. Self-drilling element screw, washer with sealing *
- ☐ 231. Flashing fastener, washer with sealing *
- ☐ 232. Flashing fastener, without washer *
- ☐ 302. /EA3SS410/ Sealing tape
- ☐ 312. Mineral wool batten

- ☐ 321. /EA3SM312___/ Sealing compound
- ☐ 325. /EA3SM312___/ Sealing compound during inst. to outer and inner female grooves
- ☐ 330. PU insulation
- ☐ 331. EPDM sealing
- ☐ 332. /CA3SP814/ Separating piece EPDM
- ☐ 333. /CA3SE410/ Separating strip EPDM
- ☐ 342. L-profile
- ☐ 350. PVC tape
- ☐ 352. Lead-in rubber grommet

☒ Ruukki's delivery

*Screw material stainless steel

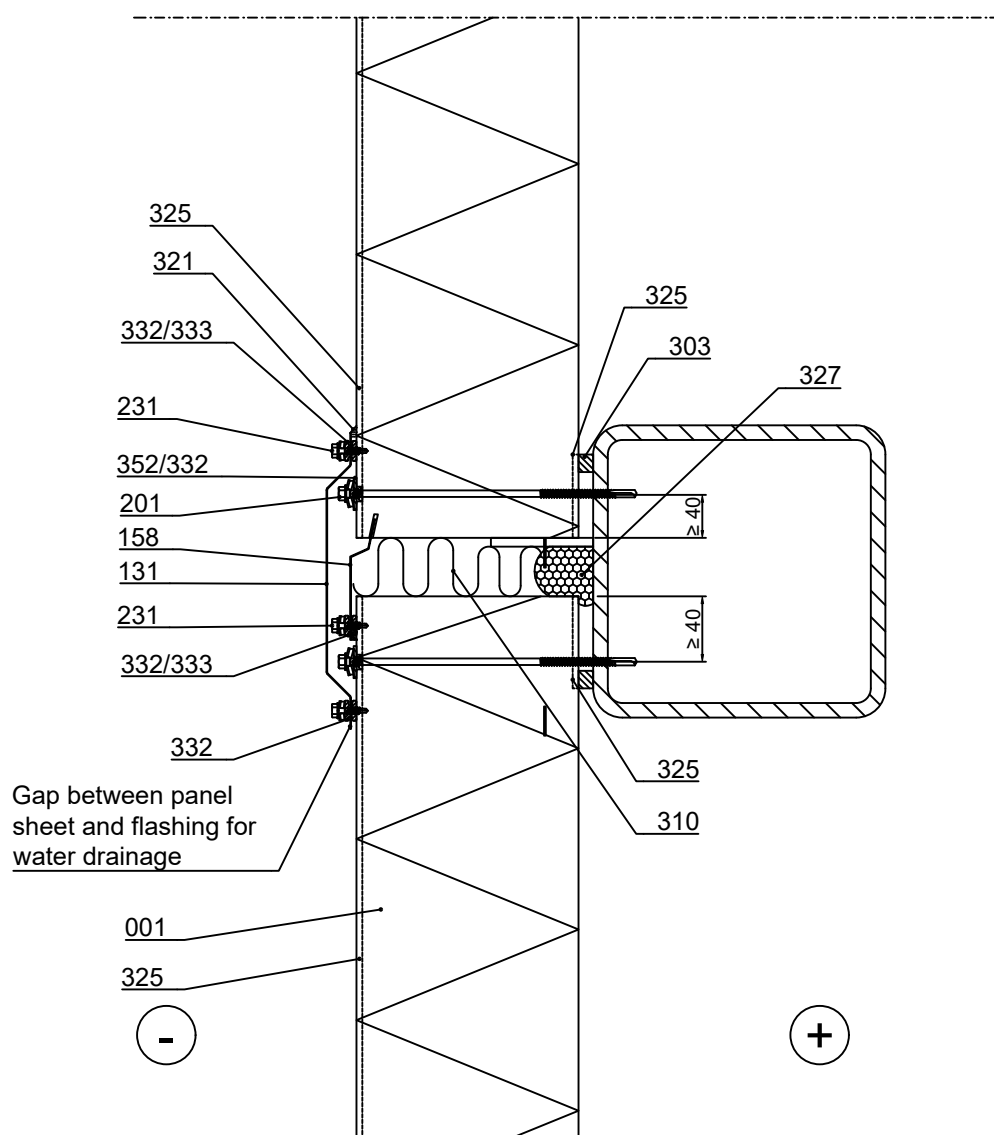
Copyright © Ruukki Construction Oy. Allowed only for designs with Ruukki's products.



Contents of drawing

Ruukki ® Patina Panel
Vertical installation,
Horizontal joint, Vertical section, option 1

Date 16.12.2021	Rev. date	Work nr.	Drawing nr. nSPBC09-1E-EN
Drawn by Ruukki	Rev.		
Scale 1:5	Building		File nr.



- ☐ 001. Ruukki ® Patina Panel, vertical installation
- ☐ 131. COR-TEN Vertical joint flashing
- ☐ 158. Horizontal joint flashing, HIARC t = 0.6 mm
- ☐ 201. Self-drilling element screw, washer with sealing *
- ☐ 231. Flashing fastener, washer with sealing*
- ☐ 303. /EA3SS1210/ Sealing tape
- ☐ 310. Mineral wool

- ☐ 321. /EA3SM310___/ Sealing compound
- ☐ 325. /EA3SM310___/ Sealing compound during inst. to outer female groove in full length of panel and inner female groove from panel end to sealing
- ☐ 327. Elastic polyurethane foam
- ☐ 332. /CA3SP814/ Separating piece EPDM
- ☐ /333. /CA3SE410/ Separating strip EPDM

☒ Ruukki's delivery

*Screw material stainless steel

Copyright © Ruukki Construction Oy. Allowed only for designs with Ruukki's products.

325

321

332/333

231

352/332

201

158

131

231

332/333

332

Gap between panel sheet and flashing for water drainage

001

201

352/332

325

325

302

303

Steel structure according to structural designer

159

≥ 40

327

310

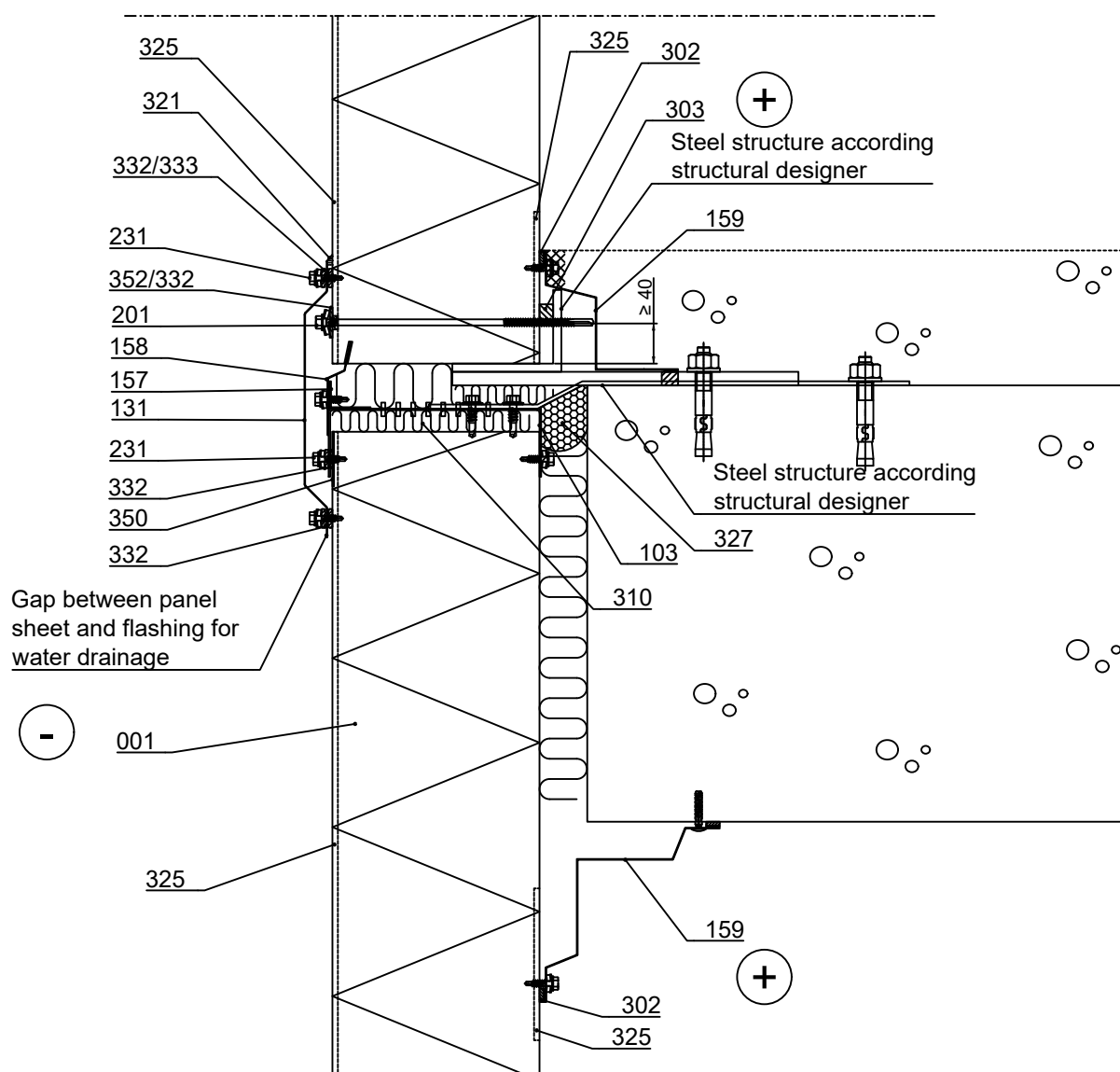
303

Steel structure according to structural designer

+

-

Date 16.12.2021	Rev. date	Work nr.	Drawing nr. nSPBC09-3E-EN
Drawn by Ruukki	Rev.		
Scale 1:5	Building		File nr.



- ☐ 001. Ruukki ® Patina Panel, vertical installation
- ☐ 103. /EA1W___/ Window purlin, oval holes on the sides
- ☐ 131. COR-TEN Vertical joint flashing
- ☐ 157. Support flashing, HIARC t = 0.6 mm
- ☐ 158. Horizontal joint flashing, HIARC t = 0.6 mm
- ☐ 159. Cover flashing, acc. to project
- ☐ 201. Self-drilling element screw, washer with sealing *
- ☐ 231. Flashing fastener, washer with sealing *
- ☐ 302. /EA3SS410/ Sealing tape
- ☐ 303. /EA3SS1210/ Sealing tape
- ☐ 310. Mineral wool
- ☐ 321. /EA3SM310___/ Sealing compound
- ☐ 325. /EA3SM310___/ Sealing compound during inst. to outer female groove in full length of panel and inner female groove from panel end to sealing
- ☐ 327. Elastic polyurethane foam
- ☐ 332. /CA3SP814/ Separating piece EPDM
- ☐ 333. /CA3SE410/ Separating strip EPDM
- ☐ 350. PVC tape (on the panel ext. surface under purlin)

☒ Ruukki's delivery

*Screw material stainless steel