

# Sandwich panel SPA

Accessory catalogue

## • **Content**

Purlins and studs .....	3-6
Flashings .....	7-30
Sealants .....	33-38
Wools .....	39-40
Fastenings .....	31-48
Lifting tools .....	49-52

## • **Colors explanations**

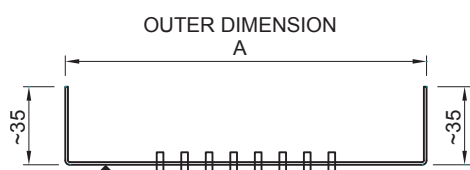


Special accessories which are specific for SPA Energy panel details and used as part of Ruukki Airtightness package.



Special accessories which are specific for SPA Patina panel details.

This brochure includes the main accessories of Sandwich panel SPA. They do not directly fit for use in all construction sites. In conflict situations act according to the instructions of the structural designer or contact our technical support (contact information on the last page of this brochure).



#### • Product properties

Product name	<b>U-Plinth purlin EA1U----</b>
Length	5 995 mm
Material thickness	1.20 mm
Package size	pcs

Panel	U-Plinth purlin (Polyester), RR20	Outer dimension A (mm)	Weight (kg/pcs)
SPA100	EA1U100POLRR20	84	8.47
SPA125	EA1U125POLRR20	112	9.88
SPA150	EA1U150POLRR20	139	11.29
SPA175	EA1U175POLRR20	161	12.71
SPA200	EA1U200POLRR20	185	14.12
SPA200+	EA1U200+POLRR20	187	14.12
SPA230	EA1U230POLRR20	219	16.09
SPA300	EA1U300POLRR20	288	19.93

#### • Materials, coatings and colours

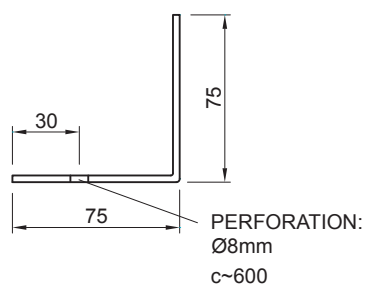
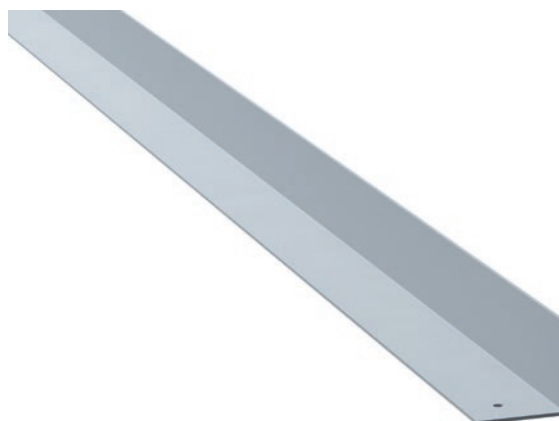
Continuously organic-coated steel (EN 10169)  
Polyester RR20 (standard)

#### • Intended use

Starting purlin for horizontally installed panels.

#### • Note

Thermo-perforated purlin, rows of holes 3, 6 or 8 depending on purlin width. There is Rain Protect film on the top of the purlin. Purlins for SPA150 – 300 panels have weep holes on external side.



#### • Product properties

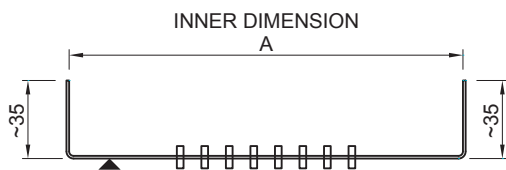
Product name	<b>Plinth purlin EA1L7530ZN</b>
Length	5 995 mm
Material thickness	3.00 mm
Band width	145 mm
Weight	20.47 kg/pcs
Package size	pcs

#### • Material

Continuously hot-dip coated steel (EN 10346)  
Zinc coated Zn

#### • Intended use

Starting purlin for vertically and diagonally installed panels.



#### • Product properties

Product name	<b>Window frame stud EA1W____</b>
Length	5 995 mm
Material thickness	1.20 mm
Package size	pcs

Panel	Window frame stud	Inner dimension A (mm)	Weight (kg/pcs)
SPA100	EA1W100POLRR20	99	9.88
SPA125	EA1W125POLRR20	127	11.29
SPA150	EA1W150POLRR20	154	12.71
SPA175	EA1W175POLRR20	176	14.12
SPA200	EA1W200POLRR20	200	15.25
SPA200+	EA1W200+POLRR20	204	15.25
SPA230	EA1W230POLRR20	234	17.05
SPA300	EA1W300POLRR20	305	20.96

#### • Materials, coatings and colours

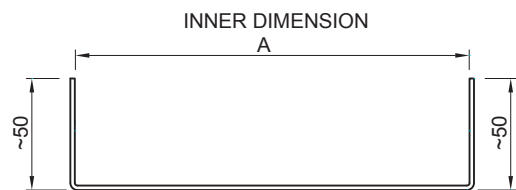
Continuously organic-coated steel (EN 10169)  
Polyester RR20

#### • Intended use

Cover and support stud for window edges

#### • Note

Thermo-perforated stud, rows of holes 3, 6 or 8 depending on stud width.



#### • Product properties

Product name	<b>Door frame stud EA1D____</b>
Length	5 995 mm
Material thickness	2.00 mm
Package size	pcs

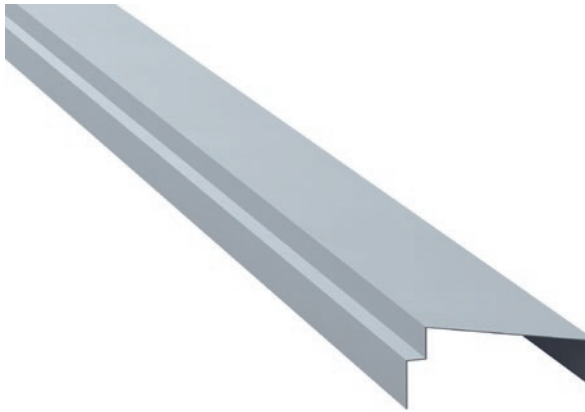
Panel	Door frame stud	Inner dimension A (mm)	Weight (kg/pcs)
SPA100	EA1D100ZN	99	18.35
SPA125	EA1D125ZN	127	20.71
SPA150	EA1D150ZN	154	23.53
SPA175	EA1D175ZN	176	25.41
SPA200	EA1D200ZN	200	27.67
SPA200+	EA1D200+ZN	204	27.67
SPA230	EA1D230ZN	234	31.06
SPA300	EA1D300ZN	305	38.19

#### • Material

Continuously hot-dip coated steel (EN 10346)  
Zinc coated Zn

#### • Intended use

Cover and support stud for door edges.



- **Product properties**

Product name	<b>Eave purlin EA1EP____</b>
Length	5 995 mm
Material thickness	1.00 mm
Package size	pcs

Panel	Eave purlin	Internal dimension (mm)	Weight (kg/pcs)
SPA150	EA1EP150	154	12.71
SPA200	EA1EP200	200	15.06
SPA200+	EA1EP200+	204	15.06
SPA230	EA1EP230	234	17.41
SPA300	EA1EP300	305	21.17

- **Materials**

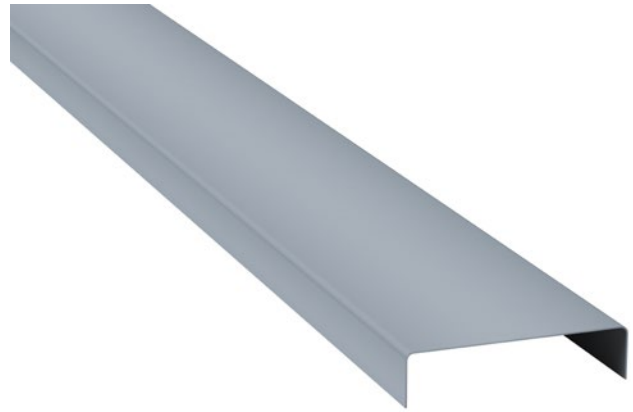
Continuously hot-dip coated steel (EN 10346)  
Zinc coated    Zn

- **Intended use**

Cover and support purlin for eave construction.

- **Note**

Dimension B varies from 39–55mm depending on Eave purlin type.



- **Product properties**

Product name	<b>Eave Purlin F EA1EPF____</b>
Length	5 995 mm
Material thickness	1.00 mm
Package size	pcs

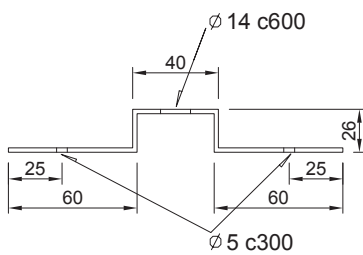
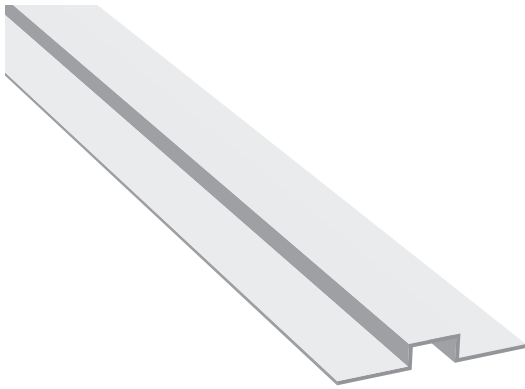
Panel	Eave purlin	Internal dimension (mm)	Weight (kg/pcs)
SPA100	EA1EPF100	99	8.87
SPA125	EA1EPF125	127	9.93
SPA150	EA1EPF150	154	11.99
SPA175	EA1EPF175	176	12.47
SPA200	EA1EPF200	200	14.10
SPA200+	EA1EPF200+	204	14.10
SPA230	EA1EPF230	234	15.35

- **Material**

Continuously hot-dip coated steel (EN 10346)  
Zinc coated    Zn

- **Intended use**

Cover and support purlin for eave construction



- **Product properties**

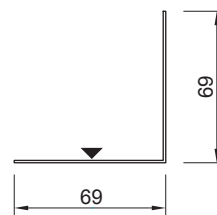
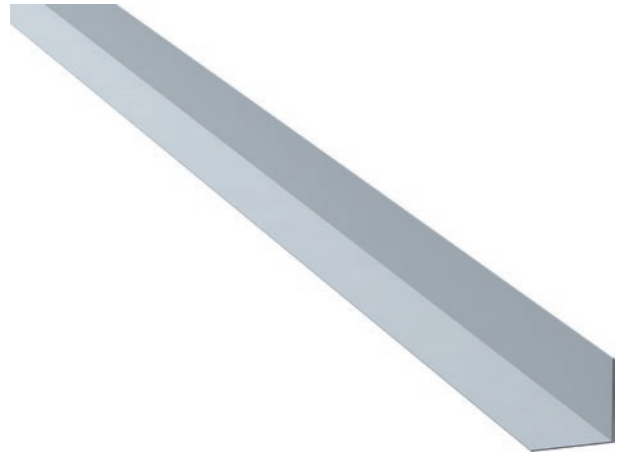
Product name	<b>Hat Purlin EA1HP3</b>
Length	1000 mm
Material thickness	2.0 mm
Weight	6.27 kg/pcs
Package size	pcs

- **Materials, coatings and colours**

Continuously hot-dip coated steel (EN 10346)  
Zinc coated Zn

- **Intended use**

Support purlin for ceiling panels.



- **Product properties**

Product name	<b>L-Purlin EA1FC1</b>
Length	3050 mm
Material thickness	1.2 mm
Band width	135 mm
Weight	7.8 kg/pcs
Package size	pcs

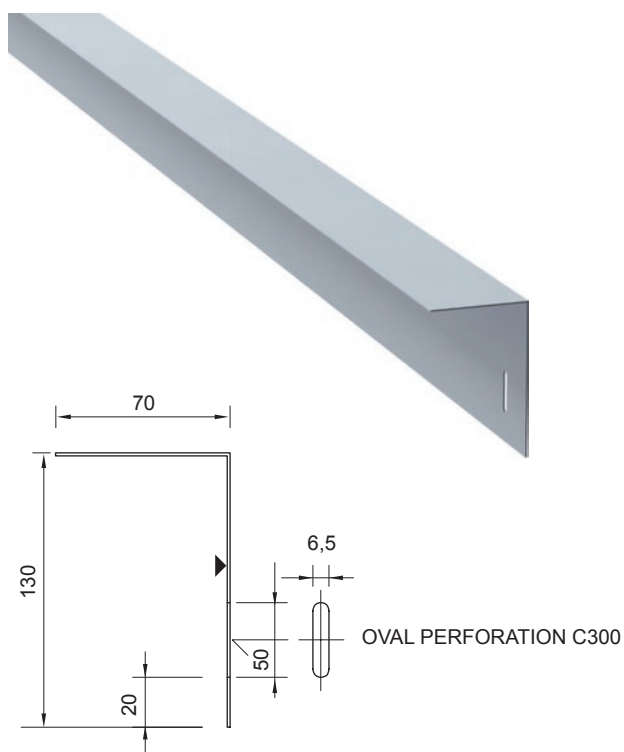
- **Materials, coatings and colours**

Continuously hot-dip coated steel (EN 10346)  
Zinc coated Zn, RR20

- **Intended use**

Support purlin for vertically installed internal wall panels at the bottom of the wall.





- **Product properties**

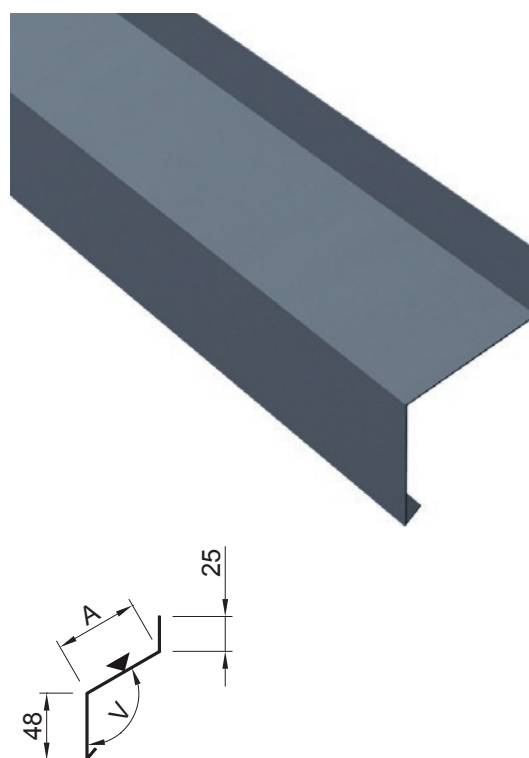
Product name	<b>L-Purlin EA1FC5</b>
Length	3050 mm
Material thickness	1.2 mm
Band width	200 mm
Weight	11.2 kg/pcs
Package size	pcs

- **Materials, coatings and colours**

Continuously ht-dip coated steel (EN 10346)  
Zinc coated Zn, RR20

- **Intended use**

Support purlin for vertically installed internal wall panels at the top of the wall.



- **Product properties**

Product name	<b>Plinth flashing EA1P1 – ____</b>
Length	2 500 mm
Material thickness	0.60 mm
Package size	pcs

- **Materials, coatings and colours**

Continuously organic coated steel (EN 10169)  
Pural BT RR20, 21, 22, 23, 29, 33, 35, 40, 41, 45  
Polyester RR20, 21, 946

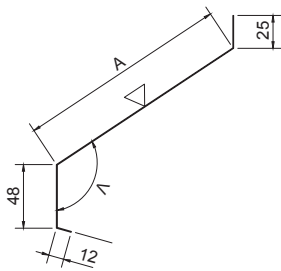
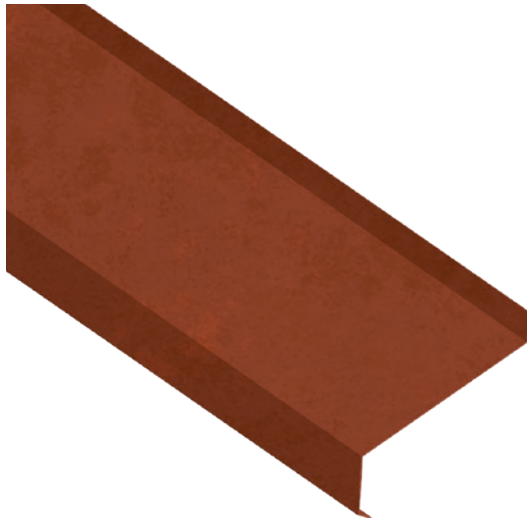
Other materials, coatings and colours order-specific.

- **Intended use**

For covering space between panel and plinth, also as post-installed.

- **Note**

Dimension A and angle V (α °) are required.  
Standard cutting widths 250 mm (EA1P1 – 250) and 416 mm (EA1P1 – 416).  
Flashing has 100 mm long taper on the other end for overlapping.



- **Product properties**

Product name	<b>Plinth flashing EA1P6 – ____</b>
Length	2 500 mm
Material thickness	0.70 mm
Package size	pcs

- **Materials, coatings and colours**

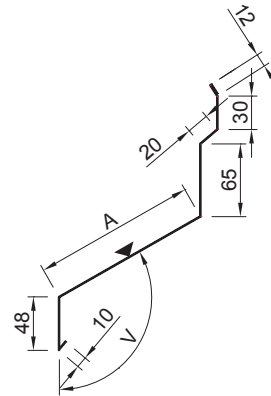
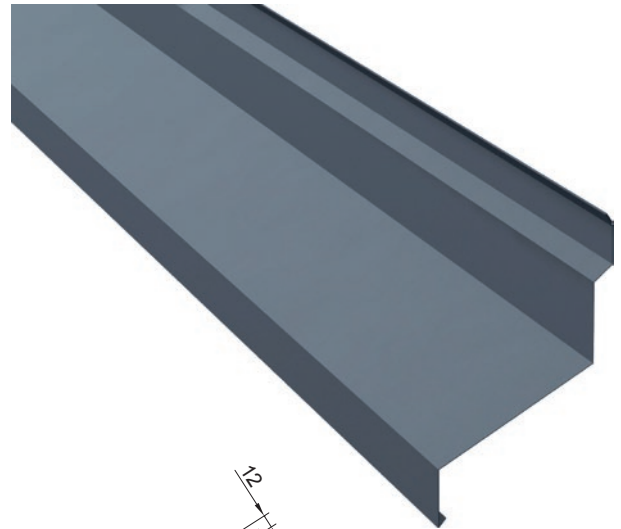
Cor-Ten A

- **Intended use**

For covering space between Patina panel and plinth.  
This accessory is used with Ruukki Patina panel details.

- **Note**

Dimension A and angle V ( $\alpha^\circ$ ) are required.  
Standard cutting width 250 mm (EA1P6 – 250)  
and 416 mm (EA1P6 – 416).  
Overlap length – 100 mm.



- **Product properties**

Product name	<b>Plinth flashing EA1P5 – ____</b>
Length	2 500 mm
Material thickness	0.60 mm
Package size	pcs

- **Materials, coatings and colours**

Continuously organic-coated steel (EN 10169)  
Pural BT RR20, 21, 22, 23, 29, 33, 35, 40, 41, 45  
Polyester RR20, 21, 946

Other materials, coatings and colours order-specific.

- **Intended use**

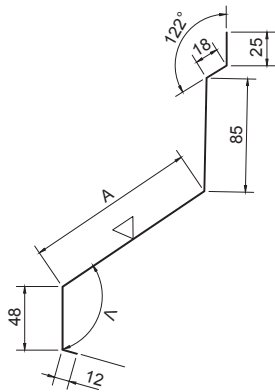
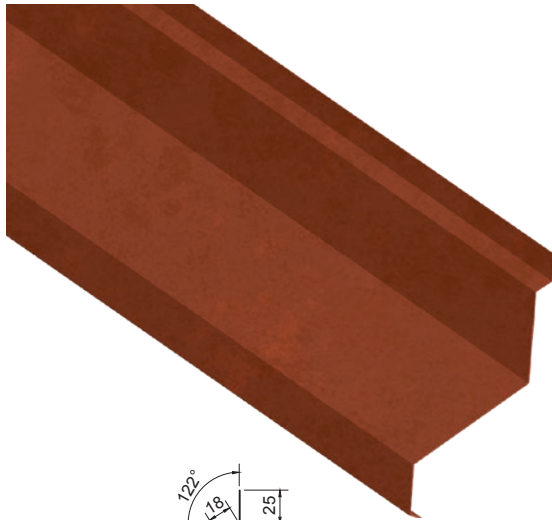
For covering space between panel and plinth, post-installed, for vertically and diagonally installed and cut panels.

- **Note**

Dimension A and angle V ( $\alpha^\circ$ ) are required.  
Standard cutting widths 250 mm (EA1P5 – 250) and 416 mm (EA1P5 – 416).  
Flashing has a 100 mm long taper on the other end for overlapping.

● Specific for SPA Patina panel detailed drawings.





#### • Product properties

Product name	Plinth flashing EA1P7 – ____
Length	2 500 mm
Material thickness	0.70 mm
Package size	pcs

#### • Materials, coatings and colours

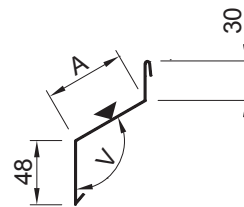
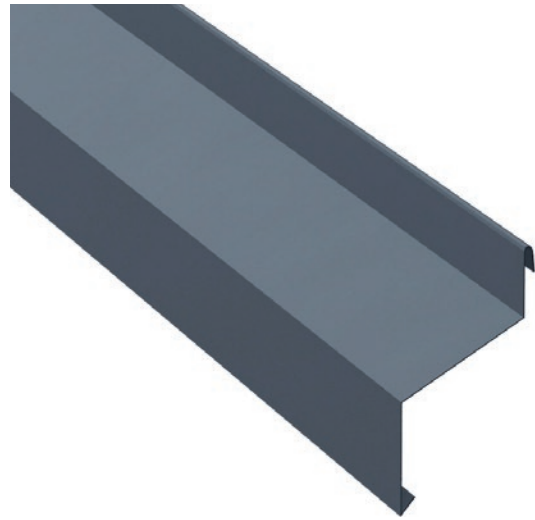
Cor-Ten A

#### • Intended use

For covering space between Patina panel and plinth.  
This accessory is used with Ruukki Patina panel details.

#### • Note

Dimension A and angle V ( $\alpha^\circ$ ) are required.  
Standard cutting width 250 mm (EA1P6 – 250)  
and 416 mm (EA1P6 – 416).  
Overlap length – 100 mm.



#### • Product properties

Product name	Plinth flashing EA1P3 – ____
Length	2 500 mm
Material thickness	0.60 mm
Package size	pcs

#### • Materials, coatings and colours

Continuously organic coated steel (EN 10169)

Pural BT RR20, 21, 22, 23, 29, 33, 35, 40, 41, 45

Polyester RR20, 21, 946

Other materials, coatings and colours order-specific.

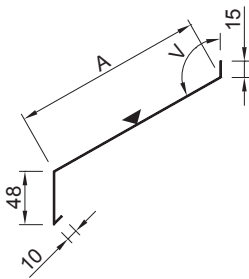
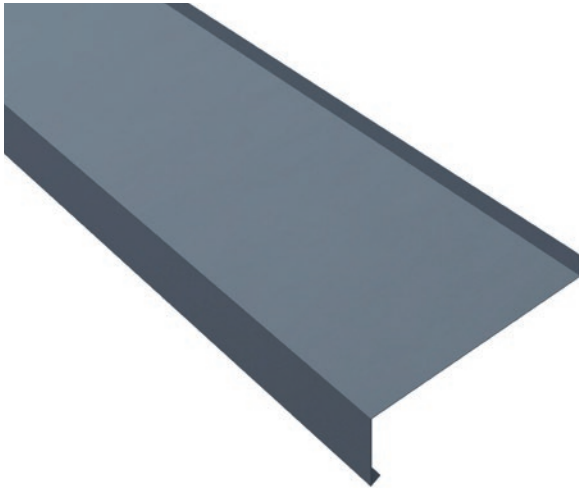
#### • Intended use

For covering space between panel and plinth,  
must be installed during panel installation.

#### • Note

Dimension A and angle V ( $\alpha^\circ$ ) are required.  
Standard cutting widths 250 mm (EA1P3 – 250) and 416  
mm (EA1P3 – 416).  
Flashing has 100 mm long taper on the other end for  
overlapping.

● Specific for SPA Patina panel detailed drawings.



#### • Product properties

Product name	<b>Plinth flashing EA1P4 – ____</b>
Length	2 500 mm
Material thickness	0.60 mm
Package size	pcs

#### • Materials, coatings and colours

Continuously organic-coated steel (EN 10169)	
Pural BT	RR20, 21, 22, 23, 29, 33, 35, 40, 41, 45
Polyester	RR20, 21, 946

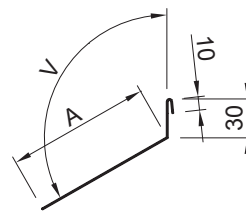
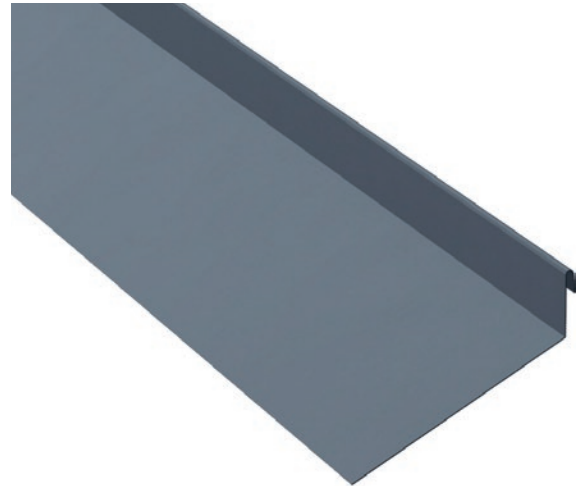
Other materials, coatings and colours order-specific.

#### • Intended use

For covering space between panel and plinth, also as post-installed.

#### • Note

Dimension A and angle V ( $\alpha^\circ$ ) are required.  
 flashing EA1PS1 is required underneath flashing.  
 Standard cutting widths 250 mm (EA1P4 – 250) and 416 mm (EA1P4 – 416).  
 Flashing has a 100 mm long taper on the other end for overlapping.



#### • Product properties

Product name	<b>Plinth support flashing EA1PS1 – ____</b>
Length	3 050 mm
Material thickness	0.60 mm
Package size	pcs

#### • Material

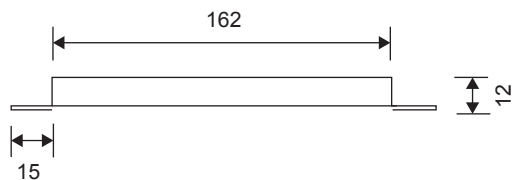
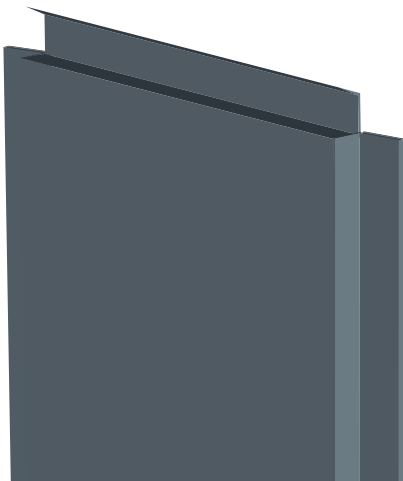
Continuously hot-dip coated steel (EN 10346)  
 Zinc coated Zn

#### • Intended use

Support flashing to Plinth flashing EA1P4, must be installed during panel installation.

#### • Note

Dimensions A and V are required.  
 Standard cutting widths 250 mm (EA1PS1 – 250ZN) and 416 mm (EA1PS1 – 416ZN).  
 Flashing has a 100 mm long taper on the other end for overlapping.



- **Product properties**

Product name	<b>Vertical joint flashing module EA1JVM</b>
Length	1200 mm
Material thickness	0.6 mm
Weight	1.41 kg/pcs
Package size	pcs

- **Materials, coatings and colours**

Continuously organic-coated steel (EN 10169)	
Pural BT	RR20, 21, 22, 23, 29, 33, 35, 40, 41, 45
Polyester	RR20, 21, 946

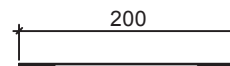
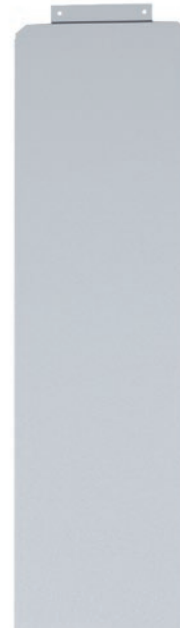
Other materials, coatings and colours order-specific.

- **Intended use**

For covering vertical joint between panel ends.

- **Note**

Flashing is 1200mm long and has pre-drilled fastening holes (c/c 400mm).



- **Product properties**

Product name	<b>Vertical joint flashing invisible EA1JVI</b>
Length	1 240 mm
Material thickness	0.6 mm
Band width	268 mm
Weight	1.6 kg/pcs
Package size	pcs

- **Materials, coatings and colours**

Continuously organic-coated steel (EN 10169)	
Pural BT	RR20, 21, 22, 23, 29, 33, 35, 40, 41, 45
Polyester	RR20, 21, 946

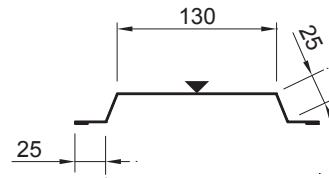
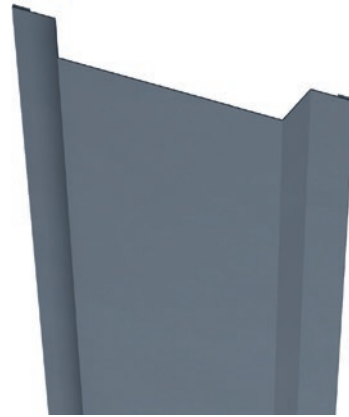
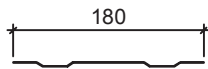
Other materials, coatings and colours order-specific.

- **Intended use**

For covering vertical joint between panel ends.

- **Note**

This flashing has 2 pre-drilled fixing holes at the upper edge. Fixing is used only in one of the holes (one screw/flashing). Recommended fixing type: Screw S1E42013GE 1000. All fixings will be invisible after installation. Vertical bottom flashing EA1JVB4 is required with this flashing. Flashing includes 40mm overlap in the joint.



#### • Product properties

Product name	<b>Vertical bottom flashing invisible EA1JVB4</b>
Length	1100 mm
Material thickness	0.6 mm
Band width	184 mm
Weight	1.4 kg/pcs
Package size	pcs

#### • Materials, coatings and colours

Continuously organic-coated steel (EN 10169)	
Polyester	RR20

#### • Intended use

Bottom flashing to vertical joint flashing invisible EA1JVI.

#### • Note

This flashing has pre-drilled fixing holes (10pcs/ flashing). Recommended fixing type: Screw S1E42013GE 1000.

#### • Product properties

Product name	<b>Vertical joint flashing EA1JV1</b>
Length	2 500 mm
Material thickness	0.60 mm
Band width	250 mm
Weight	2.94 kg/pcs
Package size	pcs

#### • Materials, coatings and colours

Continuously organic-coated steel (EN 10169)	
Pural BT	RR20, 21, 22, 23, 29, 33, 35, 40, 41, 45
Polyester	RR20, 21, 946

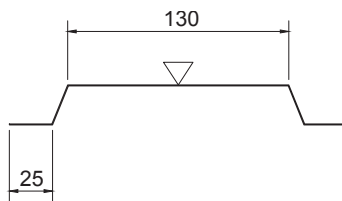
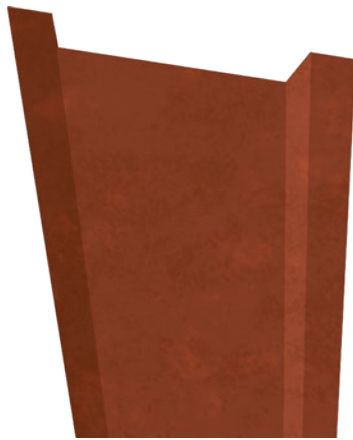
Other materials, coatings and colours order-specific.

#### • Intended use

For covering vertical joint between panel ends.

#### • Note

Flashing has a 100 mm long taper on the other end for overlapping.



- **Product properties**

Product name	<b>Vertical joint flashing EA1JV12</b>
Length	2 500 mm
Material thickness	0.70 mm
Band width	230 mm
Weight	3.22 kg/pcs
Package size	pcs

- **Materials, coatings and colours**

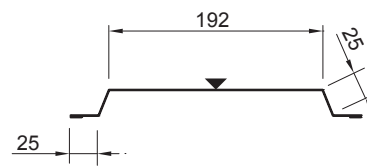
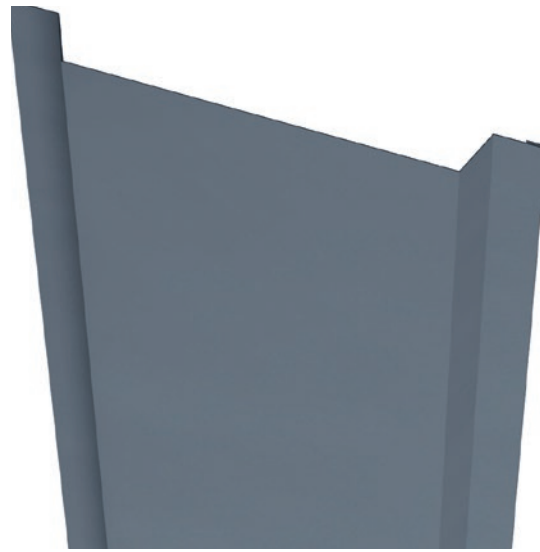
Cor-Ten A

- **Intended use**

For covering vertical joint between Patina panel ends.  
This accessory is used with Ruukki Patina panel details.

- **Note**

Overlap length – 100 mm.



- **Product properties**

Product name	<b>Vertical joint flashing EA1JV2</b>
Length	2 500 mm
Material thickness	0.60 mm
Band width	312 mm
Weight	3.67 kg/pcs
Package size	pcs

- **Materials, coatings and colours**

Continuously organic-coated steel (EN 10169)

Pural BT RR20, 21, 22, 23, 29, 33, 35, 40, 41, 45

Polyester RR20, 21, 946

Other materials, coatings and colours order-specific.

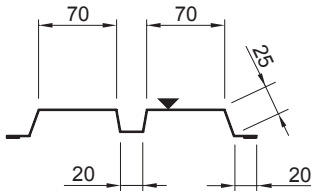
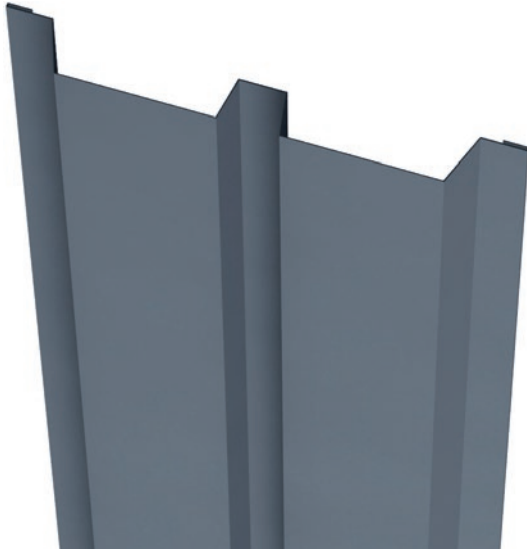
- **Intended use**

For covering vertical joint between panel ends.

- **Note**

Flashing has a 100 mm long taper on the other end for overlapping.

● Specific for SPA Patina panel detailed drawings.



- Product properties**

Product name	<b>Vertical joint flashing EA1JV3</b>
Length	2 500 mm
Material thickness	0.60 mm
Band width	313 mm
Weight	3.76 kg/pcs
Package size	pcs

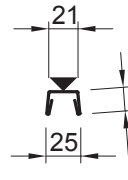
- Materials, coatings and colours**

Continuously organic-coated steel (EN 10169)	
Pural BT	RR20, 21, 22, 23, 29, 33, 35, 40, 41, 45
Polyester	RR20, 21, 946

Other materials, coatings and colours order-specific.

- Intended use**

For covering vertical joint between panel ends.



- Product properties**

Product name	<b>Vertical cover flashing EA1VCO</b>
Length	2 400 mm
Material thickness	0.60 mm
Band width	76 mm
Weight	0.86 kg/pcs
Package size	pcs

- Materials, coatings and colours**

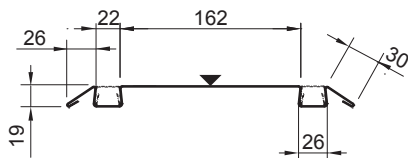
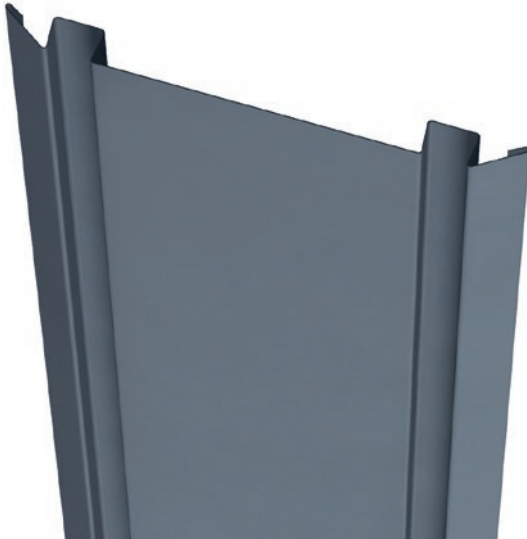
Continuously organic-coated steel (EN 10169)	
Pural BT	RR20, 21, 22, 23, 29, 33, 35, 40, 41, 45
Polyester	RR20, 21, 946

Other materials, coatings and colours order-specific.

- Intended use**

Cover flashing to vertical joint flashing EA1JV4, external corner flashing EA1EC5 and internal corner flashing EA1IC9.





- **Product properties**

Product name	<b>Vertical joint flashing EA1JV4</b>
Length	2 400 mm
Material thickness	0.60 mm
Band width	365 mm
Weight	4.13 kg/pcs
Package size	pcs

- **Materials, coatings and colours**

Continuously organic-coated steel (EN 10169)	
Pural BT	RR20, 21, 22, 23, 29, 33, 35, 40, 41, 45
Polyester	RR20, 21, 946

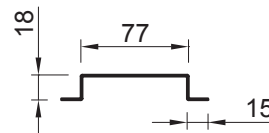
Other materials, coatings and colours order-specific.

- **Intended use**

For covering vertical joint between panel ends.

- **Note**

Vertical cover flashings EA1VCO (2 pcs/flashing) are required for flashing grooves and a vertical joint piece EA1JVJP for butt joints.



- **Product properties**

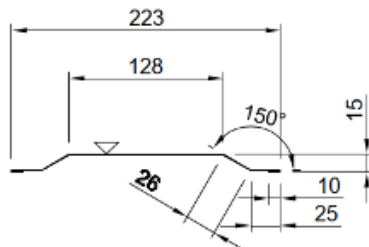
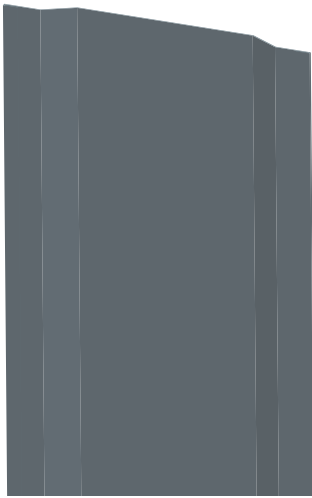
Product name	<b>Vertical joint piece EA1JVJP</b>
Length	208 mm
Material thickness	0.9 mm
Band width	139 mm
Weight	0.23 kg/pcs
Package size	pcs

- **Material**

Continuously hot-dip coated steel (EN 10346)	
Zinc coated	Zn

- **Intended use**

Support piece for joining vertical joint flashings EA1JV4.



- **Product properties**

Product name	<b>Joint flashing 1 Fire 60 EA1JF60-1</b>
Length	2 500 mm
Material thickness	0.60 mm
Band width	250 mm
Weight	1.2 kg/kpl
Package size	PC

**Materials, coatings and colors**

Continuously organic-coated steel (EN 10169)

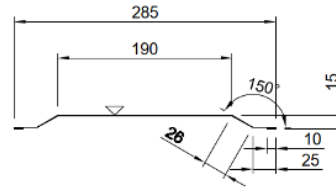
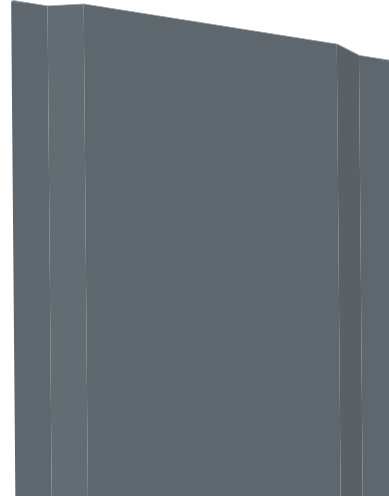
Pural BT RR20, 21, 22, 23, 29, 33, 35, 40, 41, 45

Polyester RR20, 21, 946

Other materials, coatings and colours order-specific.

- **Intended use**

Special flashing up to class EI60 without separate fire protection for panel fasteners.



- **Product properties**

Product name	<b>Joint flashing 2 Fire 60 EA1JF60-2</b>
Length	2 500 mm
Material thickness	0.60 mm
Band width	312 mm
Weight	1.5 kg/kpl
Package size	PC

**Materials, coatings and colors**

Continuously organic-coated steel (EN 10169)

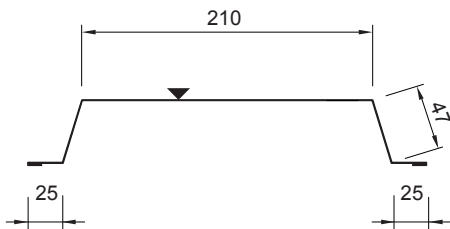
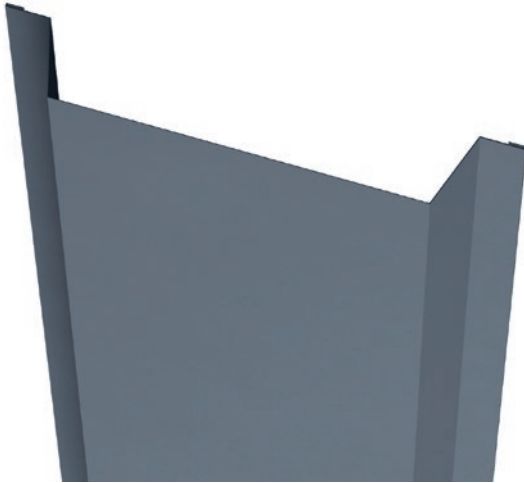
Pural BT RR20, 21, 22, 23, 29, 33, 35, 40, 41, 45

Polyester RR20, 21, 946

Other materials, coatings and colours order-specific.

- **Intended use**

Special flashing up to class EI60 without separate fire protection for panel fasteners.



- **Product properties**

Product name	<b>Cover flashing EA1R18</b>
Length	2500 mm
Material thickness	0.60 mm
Band width	374 mm
Weight	4.40 kg/pcs
Package size	pcs

- **Materials, coatings and colours**

Continuously organic coated steel (EN 10169)  
Polyester RR20

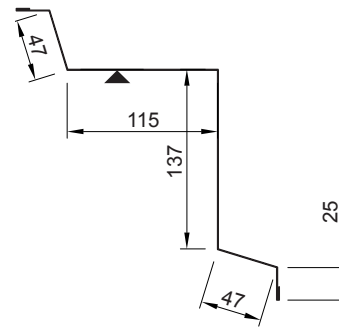
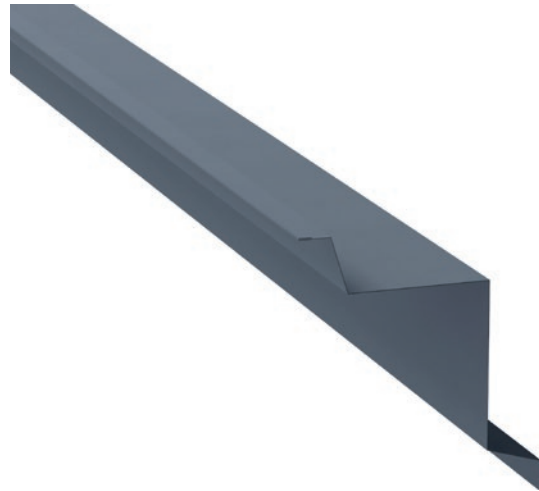
Other materials, coatings and colours order-specific.

- **Intended use**

For covering joints between panel ends in fire walls and ceilings when 40 mm thick layer of fire protection wool (EAFW206001200 10 PCS) is required.

- **Note**

Flashing has a 100 mm long taper on the other end for overlapping.



- **Product properties**

Product name	<b>Cover flashing EA1R19</b>
Length	2500 mm
Material thickness	0.60 mm
Band width	484 mm
Weight	5.69 kg/pcs
Package size	pcs

- **Materials, coatings and colours**

Continuously organic coated steel (EN 10169)  
Polyester RR20

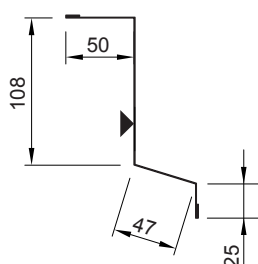
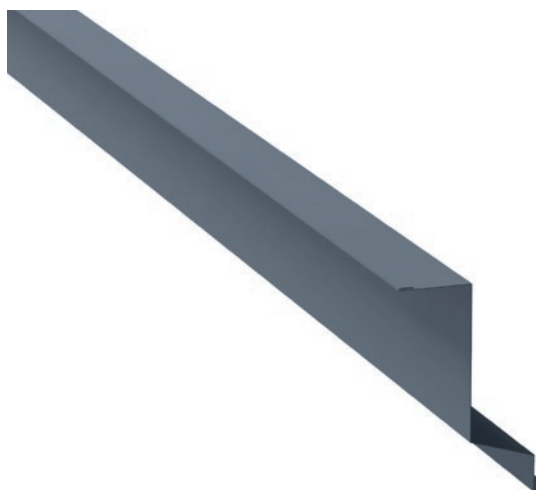
Other materials, coatings and colours order-specific.

- **Intended use**

For covering support profiles (EA1FC5) in vertically installed internal fire walls when 40 mm thick layer of fire protection wool (EAFW206001200 10 PCS) is required.

- **Note**

Flashing has a 100 mm long taper on the other end for overlapping.



- Product properties**

Product name	<b>Cover flashing EA1R23</b>
Length	2500 mm
Material thickness	0.60 mm
Band width	250 mm
Weight	2.94 kg/pcs
Package size	pcs

- Materials, coatings and colours**

Continuously organic coated steel (EN 10169)  
Polyester RR20

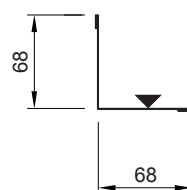
Other materials, coatings and colours order-specific.

- Intended use**

For covering joints in panel ends in fire walls and ceilings when 40 mm thick layer of fire protection wool (EAFW206001200 10 PCS) is required.

- Note**

Flashing has a 100 mm long taper on the other end for overlapping.



- Product properties**

Product name	<b>Internal corner flashing EA1IC2</b>
Length	2500 mm
Material thickness	0.60 mm
Band width	156 mm
Weight	1.83 kg/pcs
Package size	pcs

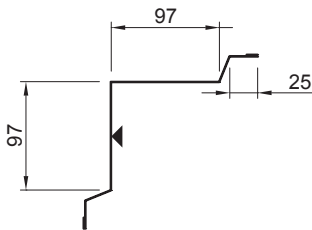
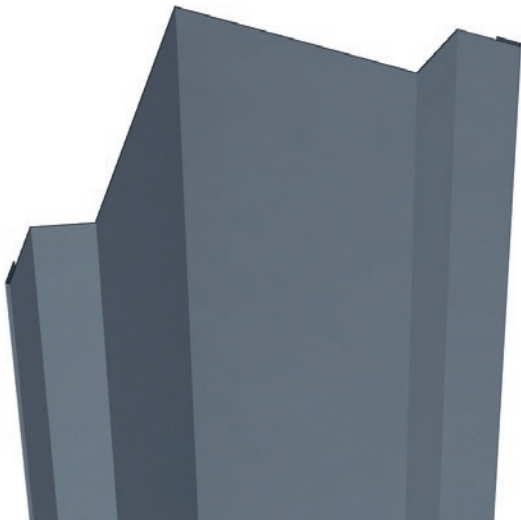
- Materials, coatings and colours**

Continuously organic coated steel (EN 10169)  
Polyester RR20

Other materials, coatings and colours order-specific.

- Intended use**

For covering internal corners in internal walls and ceilings.



- **Product properties**

Product name	<b>Internal corner flashing EA1IC3</b>
Length	2 500 mm
Material thickness	0.60 mm
Band width	313 mm
Weight	3.69 kg/pcs
Package size	pcs

- **Materials, coatings and colours**

Continuously organic coated steel (EN 10169)	
Pural BT	RR20, 21, 22, 23, 29, 33, 35, 40, 41, 45
Polyester	RR20, 21, 946

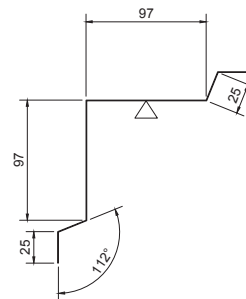
Other materials, coatings and colours order-specific.

- **Intended use**

For covering internal corner between panel ends.

- **Note**

Flashing has a 100 mm long taper on the other end for overlapping.



- **Product properties**

Product name	<b>Internal corner flashing EA1IC14</b>
Length	2 500 mm
Material thickness	0.70 mm
Band width	293 mm
Weight	4.1 kg/pcs
Package size	pcs

- **Materials, coatings and colours**

Cor-Ten A

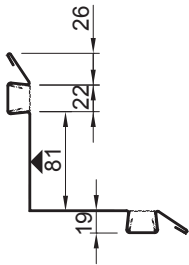
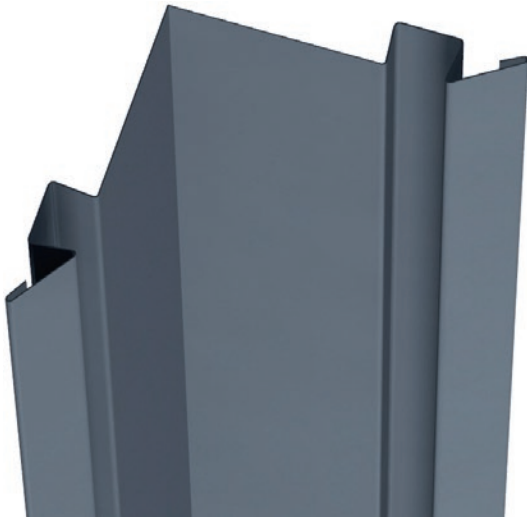
- **Intended use**

For covering internal corner between Patina panel ends. This accessory is used with Ruukki Patina panel details.

- **Note**

Overlap length – 100 mm.

● Specific for SPA Patina panel detailed drawings.



- Product properties**

Product name	<b>Internal corner flashing EA1IC9</b>
Length	2 400 mm
Material thickness	0.60 mm
Band width	365 mm
Weight	4.13 kg/pcs
Package size	pcs

- Materials, coatings and colours**

Continuously organic coated steel (EN 10169)	
Pural BT	RR20, 21, 22, 23, 29, 33, 35, 40, 41, 45
Polyester	RR20, 21, 946

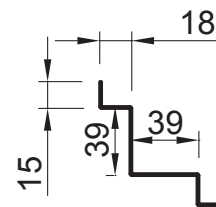
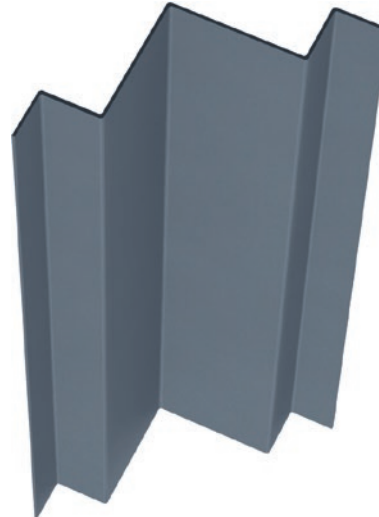
Other materials, coatings and colours order-specific.

- Intended use**

For covering internal corner between panel ends.

- Note**

Vertical cover flashings EA1VCO (2 pcs/flashing) are required for flashing grooves and a vertical joint piece EA1JVP2 for butt joints.



- Product properties**

Product name	<b>Corner joint piece EA1CJP2</b>
Length	208 mm
Material thickness	1.00 mm
Band width	139 mm
Weight	0.23 kg/pcs
Package size	pcs

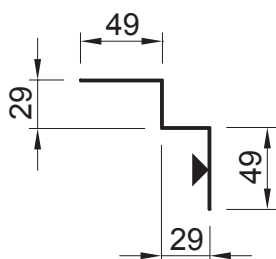
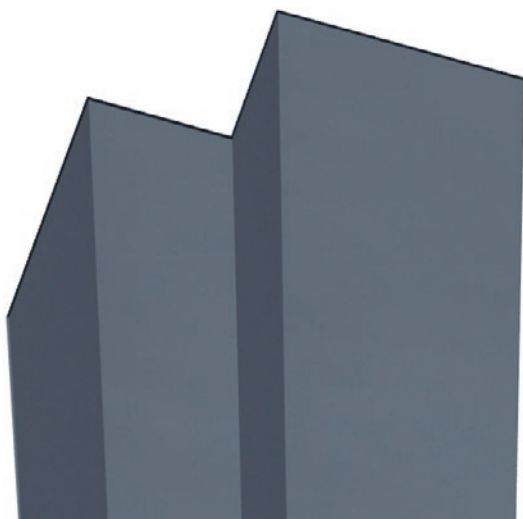
- Material**

Continuously hot-dip coated steel (EN 10346)	
Zinc coated	Zn

- Intended use**

Support piece for joining external corner flashings EA1IC9.





- **Product properties**

Product name	<b>Internal corner flashing EA1IC8</b>
Length	2 500 mm
Material thickness	0.60 mm
Band width	156 mm
Weight	1.84 kg/pcs
Package size	pcs

- **Materials, coatings and colours**

Continuously organic coated steel (EN 10169)

Pural BT RR20, 21, 22, 23, 29, 33, 35, 40, 41, 45

Polyester RR20, 21, 946

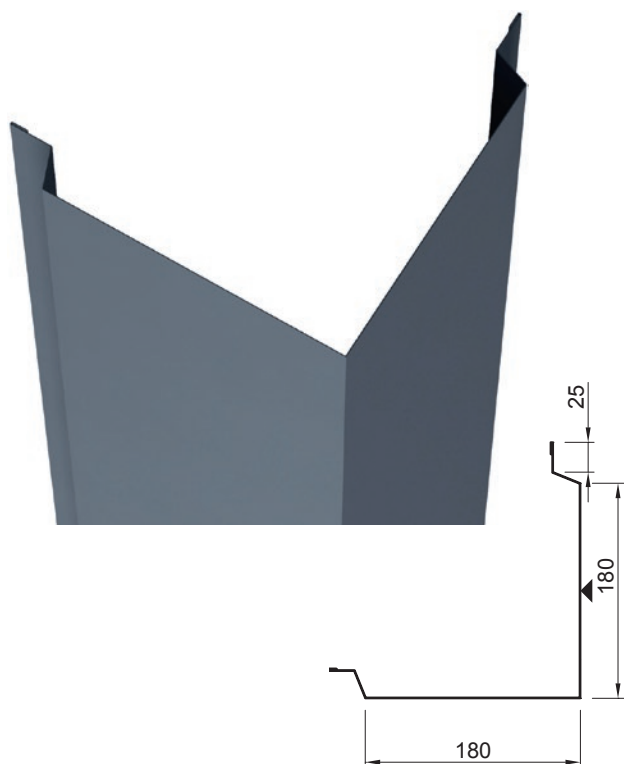
Other materials, coatings and colours order-specific.

- **Intended use**

Bottom flashing to Internal corner panels EA1IC10–13.

- **Note**

Internal corner panels EA1IC10 + EA1IC11 or  
EA1IC12 + EA1IC13 are required on the flashing.



- **Product properties**

Product name	<b>External corner flashing EA1EC2</b>
Length	2 500 mm
Material thickness	0.60 mm
Band width	480 mm
Weight	5.65 kg/pcs
Package size	pcs

- **Materials, coatings and colours**

Continuously organic coated steel (EN 10169)	
Pural BT	RR20, 21, 22, 23, 29, 33, 35, 40, 41, 45
Polyester	RR20, 21, 946

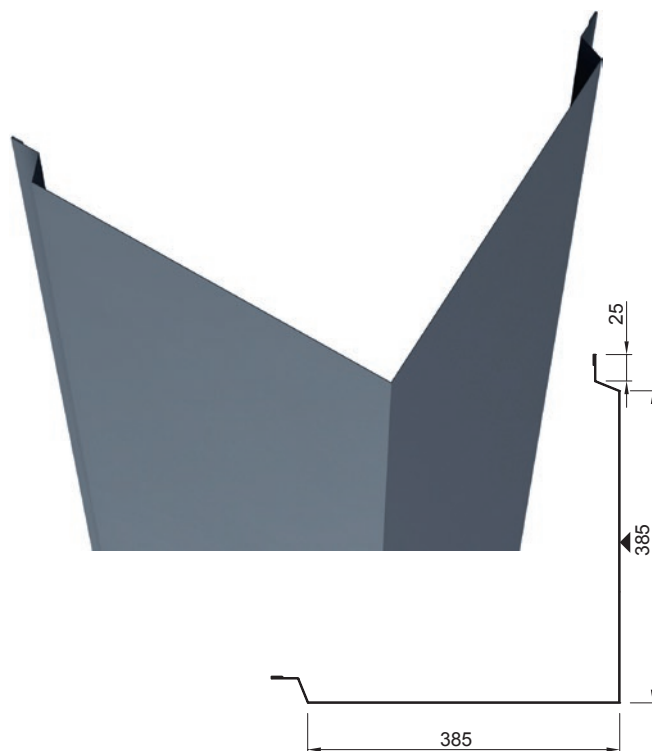
Other materials, coatings and colours order-specific.

- **Intended use**

For covering external corner between panel ends (SPA100).

- **Note**

Flashing has a 100 mm long taper on the other end for overlapping.



- **Product properties**

Product name	<b>External corner flashing EA1EC6</b>
Length	2 500 mm
Material thickness	0.60 mm
Band width	890 mm
Weight	10.47 kg/pcs
Package size	pcs

- **Materials, coatings and colours**

Continuously organic coated steel (EN 10169)	
Pural BT	RR20, 21, 22, 23, 29, 33, 35, 40, 41, 45
Polyester	RR20, 21, 946

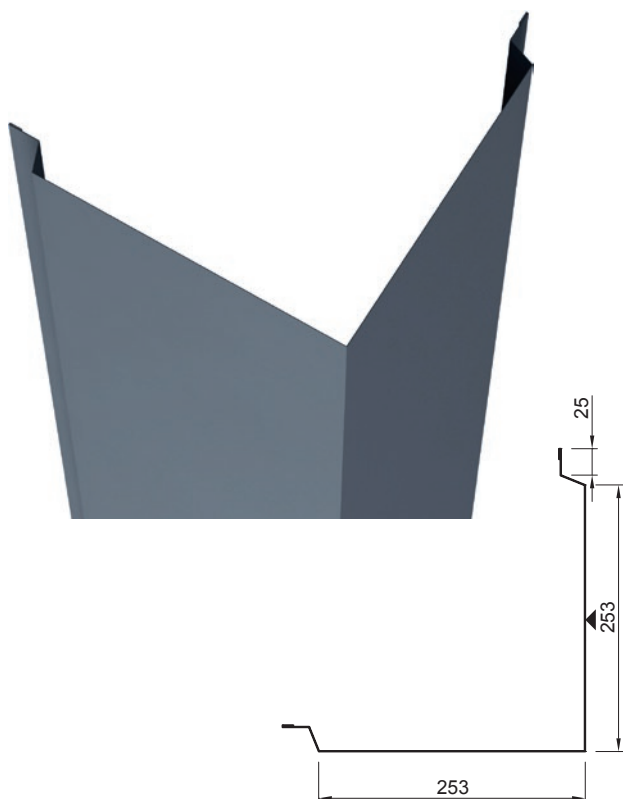
Other materials, coatings and colours order-specific.

- **Intended use**

For covering external corner between panel ends (SPA300)

- **Note**

Flashing has a 100 mm long taper on the other end for overlapping.



#### • Product properties

Product name	<b>External corner flashing EA1EC3</b>
Length	2 500 mm
Material thickness	0.60 mm
Band width	625 mm
Weight	7.36 kg/pcs
Package size	pcs

#### • Materials, coatings and colours

Continuously organic coated steel (EN 10169)	
Pural BT	RR20, 21, 22, 23, 29, 33, 35, 40, 41, 45
Polyester	RR20, 21, 946

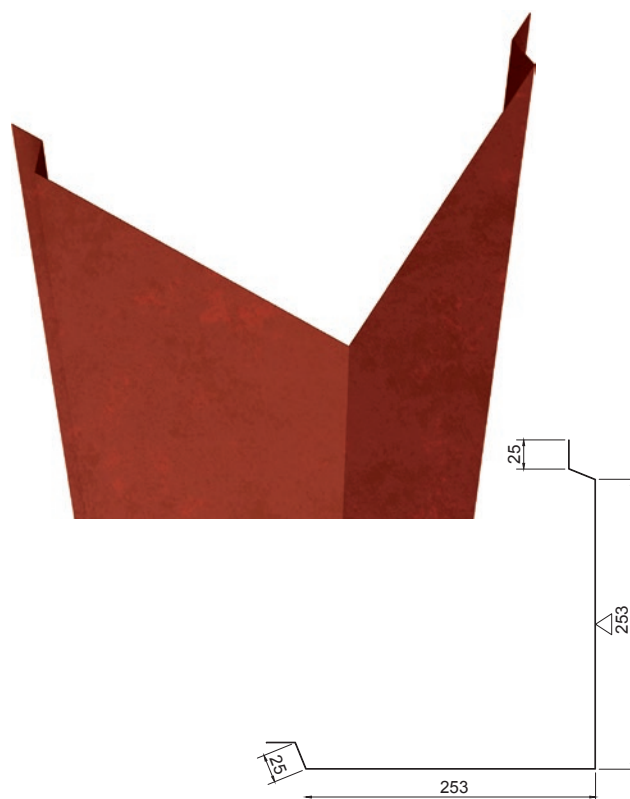
Other materials, coatings and colours order-specific.

#### • Intended use

For covering external corner between panel ends (SPA125-150).

#### • Note

Flashing has a 100 mm long taper on the other end for overlapping.



#### • Product properties

Product name	<b>External corner flashing EA1EC15</b>
Length	2 500 mm
Material thickness	0.70 mm
Band width	605 mm
Weight	8.47 kg/pcs
Package size	pcs

#### • Materials, coatings and colours

Cor-Ten A

#### • Intended use

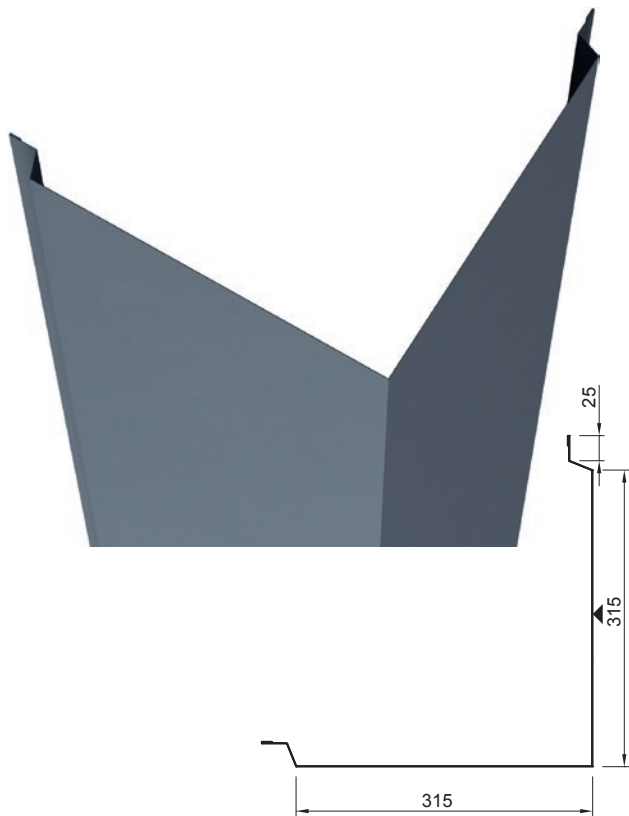
For covering external corner between Patina panel ends (SPA 150 Patina).

This accessory is used with Ruukki Patina panel details.

#### • Note

Overlap length – 100 mm.

● Specific for SPA Patina panel detailed drawings.



- Product properties**

Product name	<b>External corner flashing EA1EC4</b>
Length	2 500 mm
Material thickness	0.60 mm
Band width	750 mm
Weight	8.83 kg/pcs
Package size	pcs

- Materials, coatings and colours**

Continuously organic coated steel (EN 10169)	
Pural BT	RR20, 21, 22, 23, 29, 33, 35, 40, 41, 45
Polyester	RR20, 21, 946

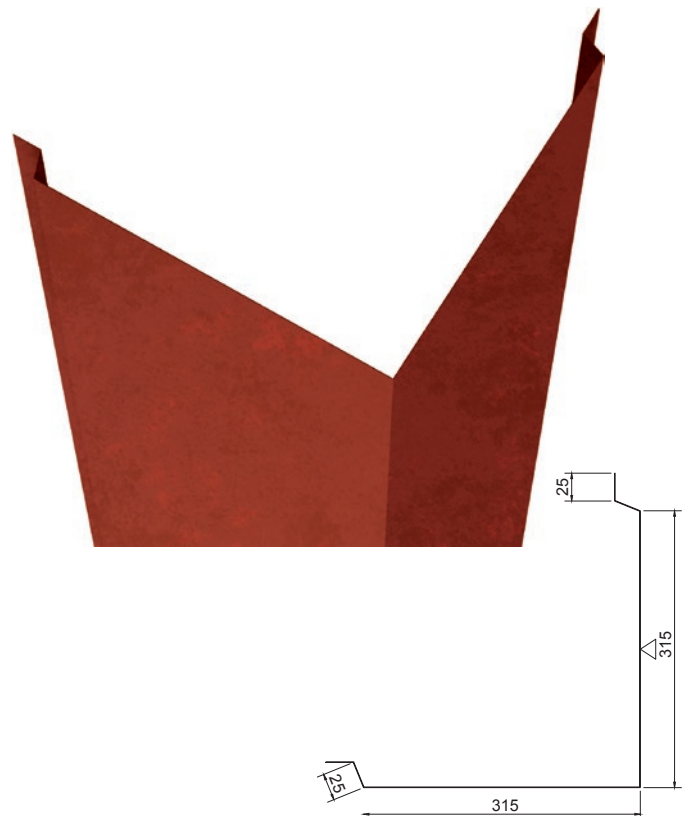
Other materials, coatings and colours order-specific.

- Intended use**

For covering external corner between panel ends (SPA175-230).

- Note**

Flashing has a 100 mm long taper on the other end for overlapping.



- Product properties**

Product name	<b>External corner flashing EA1EC16</b>
Length	2 500 mm
Material thickness	0.70 mm
Band width	729 mm
Weight	10.21 kg/pcs
Package size	pcs

- Materials, coatings and colours**

Cor-Ten A

- Intended use**

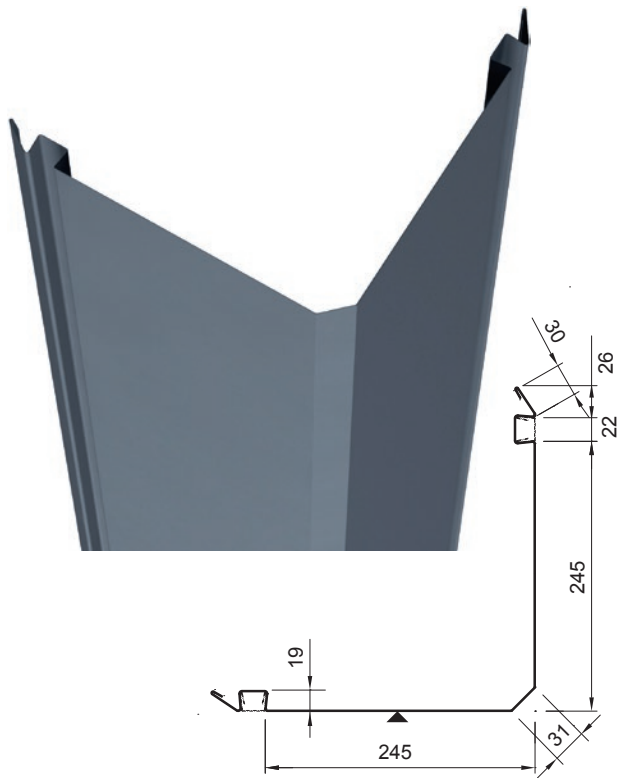
For covering external corner between Patina panel ends (SPA 200;230 Patina).

This accessory is used with Ruukki Patina panel details.

- Note**

Overlap length – 100 mm.

● Specific for SPA Patina panel detailed drawings.



- **Product properties**

Product name	<b>External corner flashing EA1EC5</b>
Length	2 400 mm
Material thickness	0.60 mm
Band width	676 mm
Weight	7.64 kg/pcs
Package size	pcs

- **Materials, coatings and colours**

Continuously organic coated steel (EN 10169)	
Pural BT	RR20, 21, 22, 23, 29, 33, 35, 40, 41, 45
Polyester	RR20, 21, 946

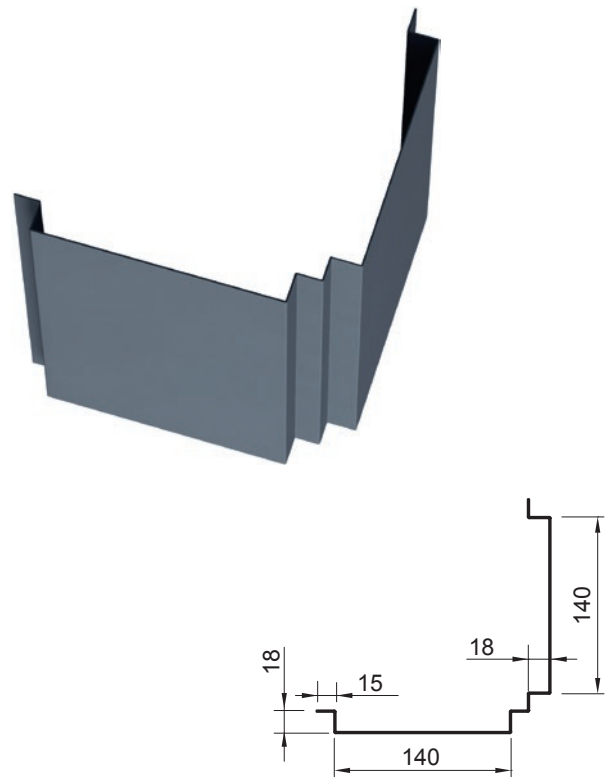
Other materials, coatings and colours order-specific.

- **Intended use**

For covering external corner between panel ends (SPA100–150).

- **Note**

Vertical cover flashing EA1VCO is required in the grooves of flashing (2 pcs/flashing) and to end joints corner joint piece EA1CJP1.



- **Product properties**

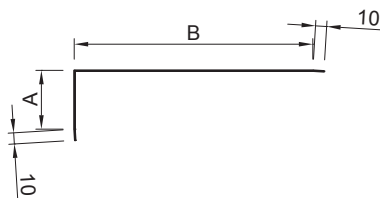
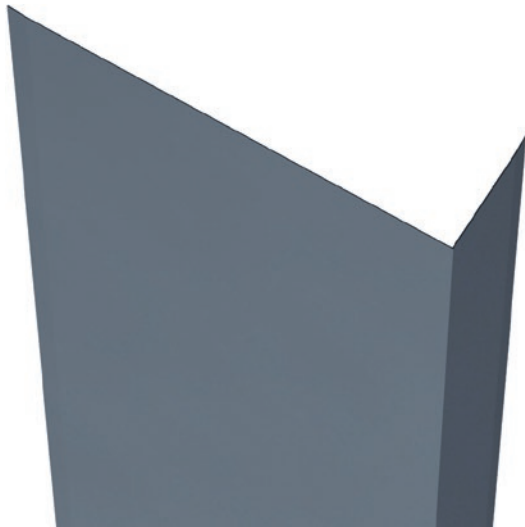
Product name	<b>Corner joint piece EA1CJP1</b>
Length	208 mm
Material thickness	1.00 mm
Band width	400 mm
Weight	0.65 kg/Weight
Package size	Weight

- **Material**

Continuously hot-dip coated steel (EN 10346)	
Zinc coated	Zn

- **Intended use**

Support piece for joining external corner flashings EA1EC5.



#### • Product properties

Product name	<b>External corner flashing</b> <b>EA1EC9___</b>
Length	3 050 mm
Material thickness	0.60 mm
Package size	pcs

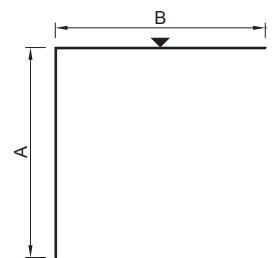
Panel	External corner flashing	A (mm)	B (mm)	Weight (kg/pcs)
SPA100	EA1EC9-100ZN	53	135	2.99
SPA125	EA1EC9-125ZN	28	160	2.99
SPA150	EA1EC9-150ZN	45	185	3.59
SPA175	EA1EC9-175ZN	83	210	4.50
SPA200	EA1EC9-200ZN	58	235	4.50
SPA230	EA1EC9-230ZN	28	265	4.50
SPA300	EA1EC9-300ZN	61	335	6.39

#### • Material

Continuously hot-dip coated steel (EN 10346)  
Zinc coated Zn

#### • Intended use

“Raincoat” to external corner between panel ends and bottom flashing to external corner panels EA1EC11-14 (fastening surface).



#### • Product properties

Product name	<b>External corner flashing</b> <b>EA1EC10___</b>
Length	2 500 mm
Material thickness	1.2 mm
Package size	pcs

Panel	External corner flashing	A (mm)	B (mm)	Weight (kg/pcs)
SPA175	EA1EC10175	214	214	10.22
SPA200	EA1EC10200	239	239	11.42
SPA230	EA1EC10230	269	269	12.86
SPA 300	EA1EC10300	340	340	16.25

#### • Materials, coatings and colours

Continuously organic-coated steel (EN 10169)  
Pural BT RR20, 21, 22, 23, 40, 41

Other materials, coatings and colours order-specific.

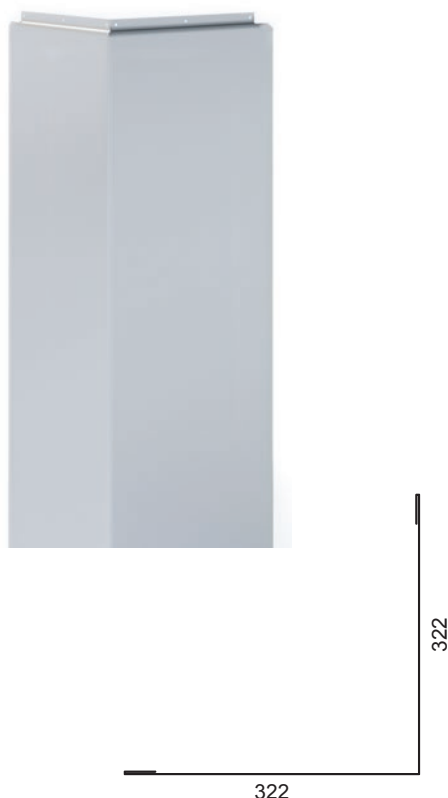
#### • Intended use

For covering external corner between panel ends (SPA175-300).

#### • Note

Vertical joint flashings are required on the connection point of flashing and panel end at both sides of corner.





- **Product properties**

Product name	<b>External corner flashing invisible EA1ECI</b>
Length	1 245 mm
Material thickness	0.6 mm
Band width	700 mm
Weight	4.1 kg/pcs
Package size	pcs

- **Materials, coatings and colours**

Continuously organic-coated steel (EN 10169)	
Pural BT	RR20, 21, 22, 23, 29, 33, 35, 40, 41, 45
Polyester	RR20, 21, 946

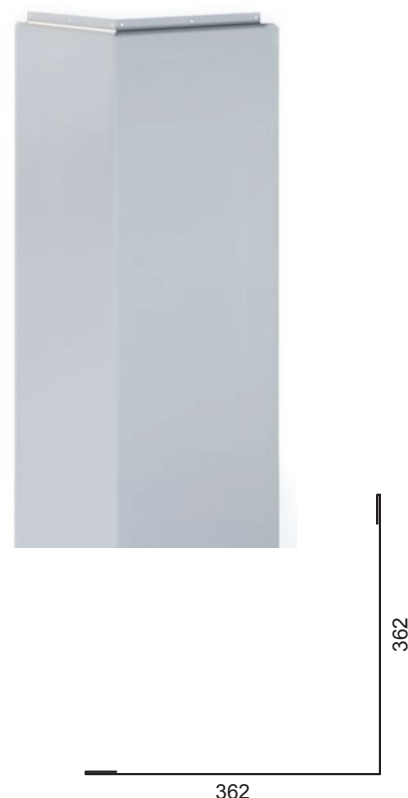
Other materials, coatings and colours order-specific.

- **Intended use**

For covering vertical corner between panel ends (SPA 150 – SPA200)

- **Note**

This flashing has 3 pre-drilled holes at upper edge per side. Fixing is done only in one of the holes per side (one screw/side). Recommended fixing type: Screw S1E42013GE 1000. All fixings will be invisible after installation. External corner bottom flashing EA1EXB4 is required with this flashing. Flashing includes 40mm overlap in the joint.



- **Product properties**

Product name	<b>External corner flashing invisible EA1ECI2</b>
Length	1 245 mm
Material thickness	0.6 mm
Band width	763 mm
Weight	4.61 kg/pcs
Package size	pcs

- **Materials, coatings and colours**

Continuously organic-coated steel (EN 10169)	
Pural BT	RR20, 21, 22, 23, 29, 33, 35, 40, 41, 45
Polyester	RR20, 21, 946

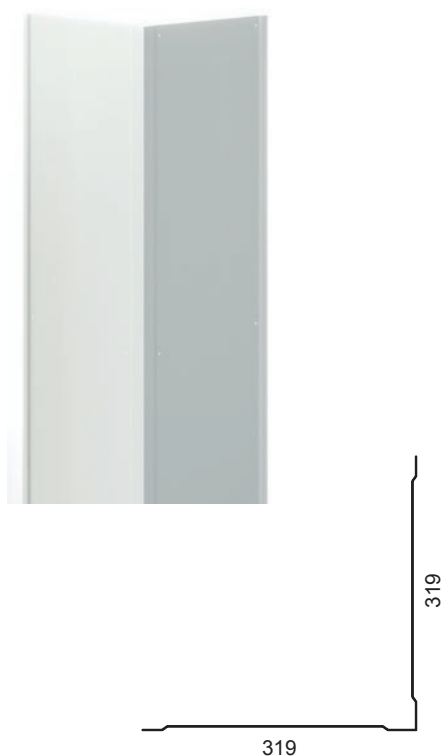
Other materials, coatings and colours order-specific.

- **Intended use**

For covering vertical corner between panels (SPA230).

- **Note**

This flashing has 3 pre-drilled holes at upper edge per side. Fixing is done only in one of the holes per side (one screw/side). Recommended fixing type: Screw S1E42013GE 1000. All fixings will be invisible after installation. External corner bottom flashing EA1EXB6 is required with this flashing. Flashing includes 40mm overlap in the joint.



- **Tuoteominaisuudet**

Product name	<b>External corner bottom flashing invisible EA1EXB4</b>
Length	1100 mm
Material thickness	0.6 mm
Band width	640 mm
Weight	3.1 kg/pcs
Package size	pcs

- **Materials, coatings and colours**

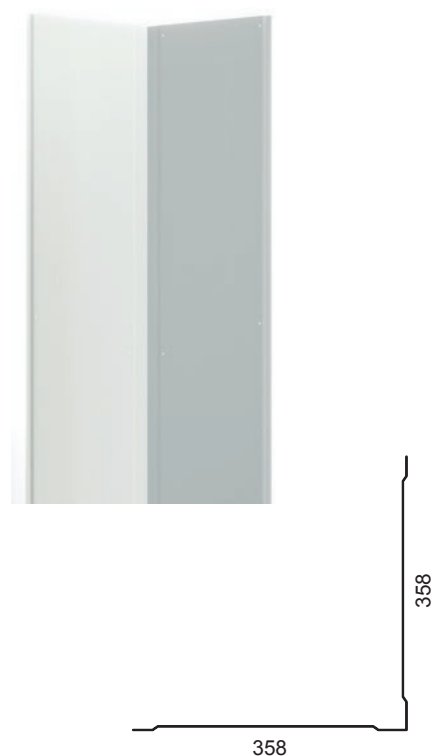
Continuously organic-coated steel (EN 10169)  
Polyester RR20

- **Intended use**

Bottom flashing to vertical joint flashing invisible EA1EC1.

- **Huom.**

This flashing has pre-drilled fixing holes (10pcs/ flashing). Recommended fixing type: Screw S1E42013GE 1000.



- **Tuoteominaisuudet**

Product name	<b>External corner bottom flashing invisible EA1EXB6</b>
Length	1100 mm
Material thickness	0.6 mm
Band width	718 mm
Weight	3.47 kg/pcs
Package size	pcs

- **Materials, coatings and colours**

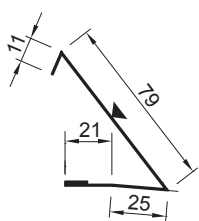
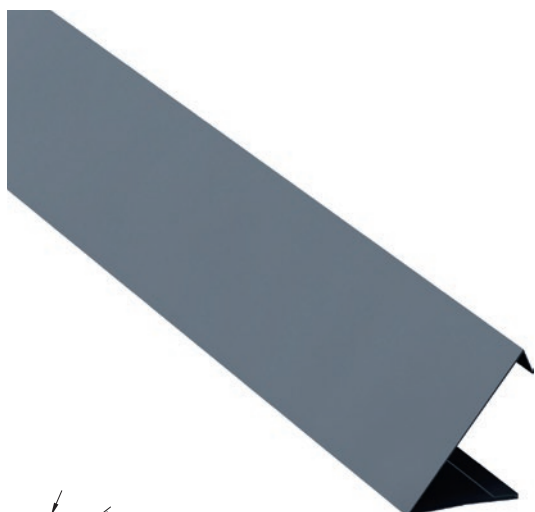
Continuously organic-coated steel (EN 10169)  
Polyester RR20

- **Intended use**

Bottom flashing to vertical joint flashing invisible EA1EC12.

- **Huom.**

This flashing has pre-drilled fixing holes (10pcs/ flashing). Recommended fixing type: Screw S1E42013GE 1000.



- **Product properties**

Product name	<b>Horizontal flashing EA1H2</b>
Length	2 500 mm
Material thickness	0.60 mm
Band width	146 mm
Weight	1.72 kg/pcs
Package size	pcs

- **Materials, coatings and colours**

Continuously organic-coated steel (EN 10169)	
Pural BT	RR20, 21, 22, 23, 29, 33, 35, 40, 41, 45
Polyester	RR20, 21, 946

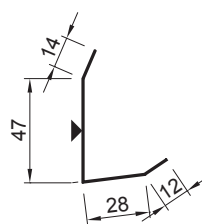
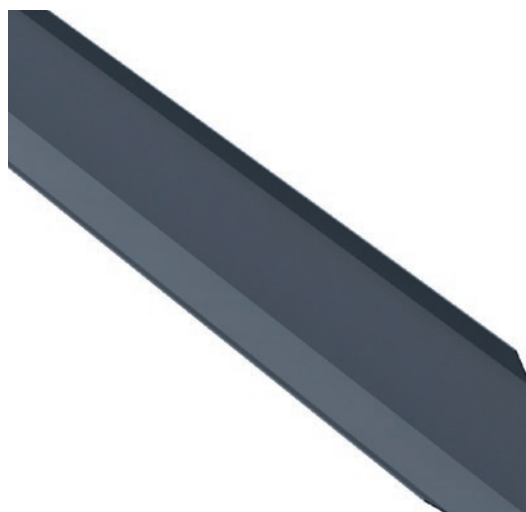
Other materials, coatings and colours order-specific.

- **Intended use**

Decorative horizontal flashing, post-installed.

- **Note**

Horizontal support flashing EA1HS2 is required underneath flashing.



- **Product properties**

Product name	<b>Horizontal support flashing EA1HS2</b>
Length	2 500 mm
Material thickness	0.60 mm
Band width	101 mm
Weight	1.19 kg/pcs
Package size	pcs

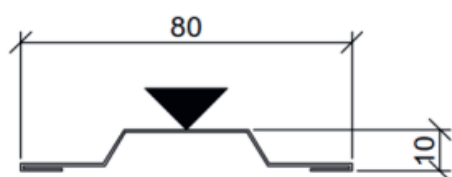
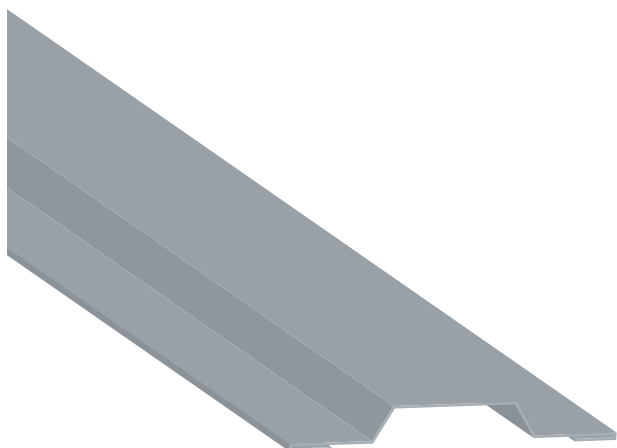
- **Materials, coatings and colours**

Continuously organic-coated steel (EN 10169)	
Pural BT	RR20, 21, 22, 23, 29, 33, 35, 40, 41, 45
Polyester	RR20, 21, 946

Other materials, coatings and colours order-specific.

- **Intended use**

Support flashing to Horizontal flashing EA1H2.



- **Product properties**

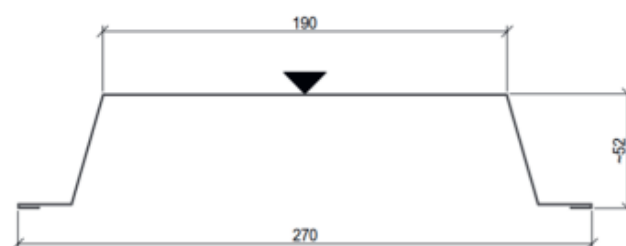
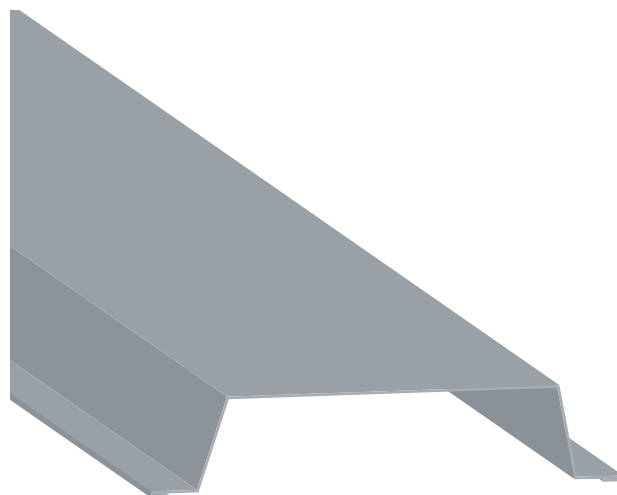
Product name	<b>Joint flashing FW.1</b>
Length	2 500 mm
Material thickness	0.60 mm
Weight	0.56 kg/pcs
Package size	pc

- **Materials, coatings and colours**

Continuously organic-coated steel (EN 10169)	
Pural BT	RR20, RR21, RR23, RR40, RR41
Polyester	RR20

- **Intended use**

To be installed to both surfaces of the Ruukki Firewall panel system, attachment cc 200.



- **Product properties**

Product name	<b>Cover flashing FW.4</b>
Length	2 500 mm
Material thickness	0.60 mm
Weight	1.7 kg/pcs
Package size	pc

- **Materials, coatings and colours**

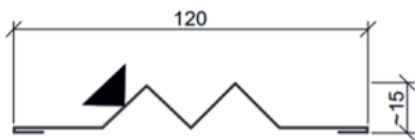
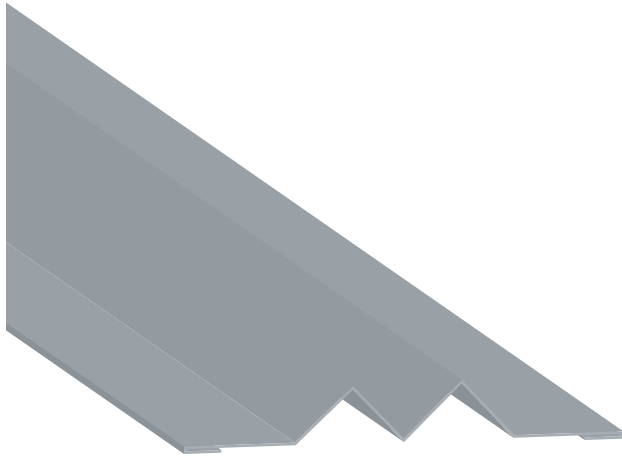
Continuously organic-coated steel (EN 10169)	
Pural BT	RR20, RR21, RR23, RR40, RR41
Polyester	RR20

- **Intended use**

Optional (standard) flashing to cover vertical joint structure between RUUKKI FIREWALL panels. Fastening cc 300 (or more often).

- **Note**

Flashing is required for Ruukki Firewall system. The list can be made case by case Design according to the same design principles.



- **Product properties**

Product name	<b>Fixing flashing FW.3</b>
Length	2 500 mm
Material thickness	0.60 mm
Weight	0.64 kg/pcs
Package size	pc

- **Materials, coatings and colours**

Continuously organic-coated steel (EN 10169)  
Polyester RR20

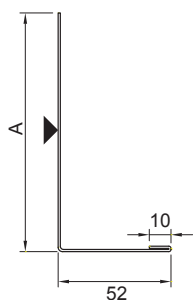
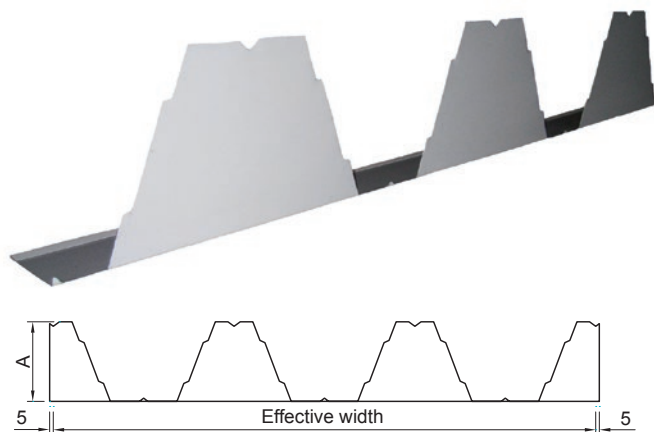
- **Intended use**

To be installed in the vertical joint of the Ruukki Firewall panel system to support panel fastenings. Flashing does not need overlapping. Fastening cc 150.

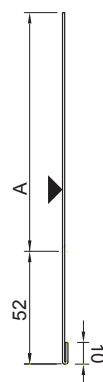
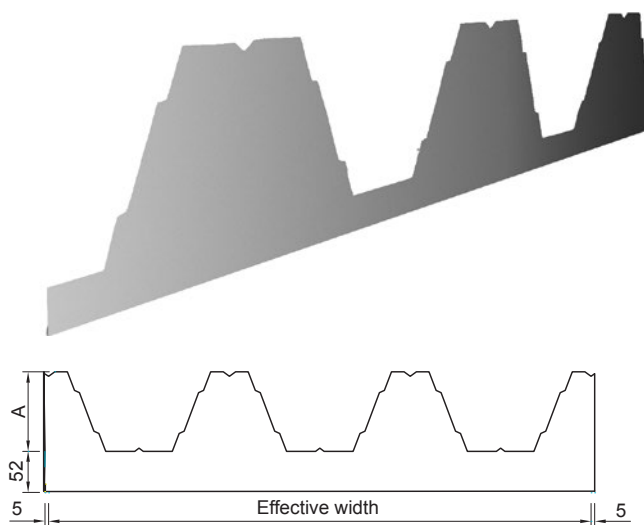
- **Note**

Required for the Ruukki Firewall system. The flashing can be made case by case design according to the same design principles.

### Closure flashing, bent



### Closure flashing, straight



### Product properties

Product name	Closure flashing T____
Material thickness	0.60 mm
Package size	pcs

Closure flashing, straight	Closure flashing, bent	Effective width (mm)	A (mm)	Weight (kg/pcs)	Load bearing sheet
EA1CFT70-57L (Big)	EA1CFT70-57LB (Big)	846	67	0.39	T70-57L (Wide flange facing upwards)
EA1CFT130M-75L (Big)	EA1CFT130M-75LB (Big)	930	128	0.86	T130M-75L (Wide flange facing upwards)
EA1CFT153-40L (Big)	EA1CFT153-40LB (Big)	840	151	0.62	T153-40L (Wide flange facing upwards)
EA1CFT70-65L (Small)	EA1CFT70-65LB (Small)	846	67	0.39	T70-57L (narrow flange facing upwards)
EA1CFT130M-111L (Small)	EA1CFT130M-111LB (Small)	930	128	0.86	T130M-75L (narrow flange facing upwards)
EA1CFT153-117L (Small)	EA1CFT153-117LB (Small)	840	151	0.62	T153-40L (narrow flange facing upwards)

### Materials, coatings and colours

Continuously organic-coated steel (EN 10169)  
Polyester RR20

### Intended use

For connections between panels and load bearing sheets.





- **Product properties**

Product name **Plinth sealing EA3SP\_**

Thickness 10 mm

Length 50 m/roll

Package size roll

Panel	Plinth sealing	Width (mm)	Weight (kg/roll)
SPA100	EA3SP8010	80	1.12
SPA125	EA3SP10510	105	1.47
SPA150	EA3SP13010	130	1.82
SPA175	EA3SP15510	155	2.17
SPA200	EA3SP18010	180	2.52
SPA230	EA3SP21010	210	2.94
SPA300	EA3SP28010	280	3.92

- **Material**

Closed-cell polyethylene plastic

- **Intended use**

For sealing space between plinth and U-Plinth purlins.



- **Product properties**

Product name **Plinth sealing expanding EA3PSE**

Thickness 5 – 20 mm (expanding)

Panel	Sealant	Width (mm)	Package size (m)	Weight (kg/pack)
SPA 150 ENERGY	EA3PSE12025	120	25	5.8
SPA200 ENERGY	EA3PSE15025	150	25	6.5
SPA230 ENERGY	EA3PSE20025	200	25	8.5
SPA300 ENERGY	EA3PSE27025	270	25	10.3

- **Material**

Expanding foam strips impregnated on EPDM.

- **Intended use**

For sealing the space between plinth and U-plinth purlins. This accessory is specific for SPA Energy and Patina panel details and used as part of Ruukki Airtightness package.

- **Note**

Two butyl self-adhesive strips on reverse side, can be fixed to U-plinth purlin.

● Specific for SPA Energy panel detailed drawings and used as part of Ruukki® Airtightness package.

● Specific for SPA Patina panel detailed drawings.



- **Product properties**

Product name **Sealing strip EA3SS410**  
 Thickness 4 mm  
 Width 10 mm  
 Length 25 m/roll  
 Weight 0.03 kg/roll  
 Package size roll

- **Material**

Closed-cell polyethylene plastic, one-sided glue surface.

- **Intended use**

For sealing space between panels and frame (steel and timber) and space between panels and flashings.



- **Product properties**

Product name **Sealing strip EA3SS1210**  
 Thickness 12 mm  
 Width 10 mm  
 Length 5 m/roll  
 Weight 0.02 kg/roll  
 Package size roll

- **Material**

Closed-cell polyethylene plastic, one-sided glue surface.

- **Intended use**

For sealing space between panels and concrete frame with standard Ruukki panel details. It is also used for sealing space between panels and steel structure with Ruukki Energy and Patina panel details as a part of Ruukki Airtightness Package.



- **Product properties**

Product name: **Sealing band EPDM EA3SS510**  
 Thickness: 5 mm  
 Width: 10 mm  
 Length: 15 m/roll  
 Weight: 0.1 kg/roll  
 Package size: roll

- **Material:**

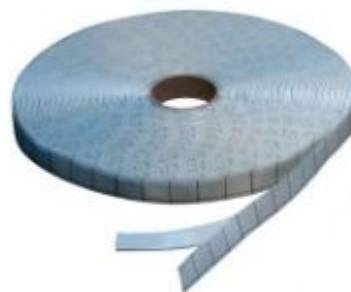
EPDM, fibre re-inforced glue on the other side.

- **Intended use**

Flashing sealant for demanding applications, e.g coastal areas.

- **Note**

Non-stock item.



- **Product properties**


Product name: **ISO-BUTYL self-adhesive tape EA3IBST1002**  
 Thickness: 2 mm  
 Width: 10 mm  
 Length: 18 m/roll  
 Weight: 0.907 kg/roll  
 Package size: roll

- **Material:**

Butyl rubber, water repellent, resistant to aging, weathering and UV.

- **Intended use**

To be used as separating element between plinth flashing and support flashing. This accessory is used with Ruukki Patina panel details.

 Specific for SPA Energy panel detailed drawings and used as part of Ruukki® Airtightness package.

 Specific for SPA Patina panel detailed drawings.



- **Product properties**

Product name	<b>Butyl band EA3BB3001</b>
Width	30 mm
Thickness	1 mm
Length	15 m/roll
Weight	0.45 kg/roll
Package size	roll

- **Material**

Mesh-reinforced butyl band, adhesive on both sides.

- **Intended use**

It is to separate U-plinth purlin from plinth flashing.  
This accessory is used with Ruukki Patina panel details.



- **Product properties**

Product name	Joint sealing corner	
	EA3JSC30025	EA3JSC37025
Width	300 mm	370 mm
Length	25 m/roll	25 m/roll
Weight	3.0 kg/roll	3.7 kg/roll
Package size	roll	

- **Material**

Diffusion-tight and elastic special PO film, impermeable to water, UV-resistant.

- **Intended use**

For sealing external corner joints between panels on external face.



- **Product properties**

Product name	<b>Joint sealing EA3JS7525</b>
Width	75 mm
Length	25 m/roll
Weight	950 g/roll
Package size	roll

- **Material**

Diffusion-tight and elastic special PO film, impermeable to water, UV-resistant.

- **Intended use**

For sealing vertical joint between panels.



- **Product properties**

Product name	<b>Joint sealing EA3JS15025</b>
Width	150 mm
Length	25 m/roll
Weight	1.5 kg/roll
Package size	roll

- **Material**

Diffusion-tight and elastic special PO film, impermeable to water, UV-resistant.

- **Intended use**

To be used under invisible vertical bottom flashing.

● Specific for SPA Patina panel detailed drawings.



- **Product properties**

Product name **PVC tape EA3PVCT25**  
 Width 25 mm  
 Length 33 m  
 Package size: roll  
 Weight: 0,21kg/roll

- **Material**

Polyvinyl chloride insulation

- **Intended use**

To be placed on plinth flashing as to avoid contact of female joint and plinth flashing. This accessory is used with Ruukki Patina panel details.



- **Product properties**

Product name **Window/door sealing EA3SWE54318**  
 Thickness: 3-18mm (expanding)  
 Width: 54mm  
 Length: 20m/ roll  
 Package size: 1 roll  
 Weight: 2,6kg/roll

- **Material**

Impregnated PUR flexible foam with special film

- **Intended use**

For sealing the space between windows / doors and panels. This accessory is specific for SPA Energy and Patina panel details and used as part of Ruukki Airtightness package.



- **Product properties**

Product name **FM330 Megafoam PRO EA6FM330**  
 Weight 0.99 kg/pcs  
 Package size bottle/880 ml

- **Material**

Elastic polyurethane foam

- **Intended use**

For sealing and insulating space between panels in vertical joints and corners. This accessory is specific for SPA Energy and Patina panel details and used as part of Ruukki Airtightness package.

- **Note**

Requires a foam pistol (EAF9).



- **Product properties**

Product name **Illmod trio EA36IT581020**  
 Thickness: 10-20 (expanding)  
 Width: 58mm  
 Length: 4.5m/roll  
 Package size: 1 roll  
 Weight: 1,5kg/roll

- **Material**

Self-adhesive impregnated PUR flexible foam

- **Intended use**

For sealing vertical joints and corners. This accessory is specific for SPA Energy and Patina panel details and used as part of Ruukki Airtightness package.

● Specific for SPA Energy panel detailed drawings and used as part of Ruukki® Airtightness package.

● Specific for SPA Patina panel detailed drawings.



- **Product properties**

Product name **Foam pistol EAF9**  
Package size pcs

- **Material**

Metal/plastic

- **Intended use**

For applying elastic polyurethane foam (EA6FM330). This accessory is specific for SPA Energy and Patina panel details and used as part of Ruukki Airtightness package.

- **Note**

For cleaning the foam pistol, composition for foam bottle (EA6AA290) is recommended.



- **Product properties**

Product name **Composition for foam bottle EA6AA290**  
Weight 0.5 kg/bottle  
Package size bottle/500 ml

- **Material**

Solvent based aerosol cleaner

- **Intended use**

For cleaning foam pistol (EAF9) after use. This accessory is specific for SPA Energy and Patina panel details and used as part of Ruukki Airtightness package.



- Specific for SPA Energy panel detailed drawings and used as part of Ruukki® Airtightness package.
- Specific for SPA Patina panel detailed drawings.



- **Product properties**

Product name **Rain Protect film EARPf37050**  
 Width 370 mm  
 Length 50 m  
 Weight 0.8 kg/roll  
 Package size roll

- **Material**

LDPE, one-sided glue surface

- **Intended use**

For weather protecting exposed wool edges in panels.



- **Product properties**

Product name **Ruukki Mounting silicone**  
 Pakkauskoko cartridge (310 ml),  
 full package 12 cartridges  
 Riittoisuus appr. 10...12m/tube

- **Väri**

Bright

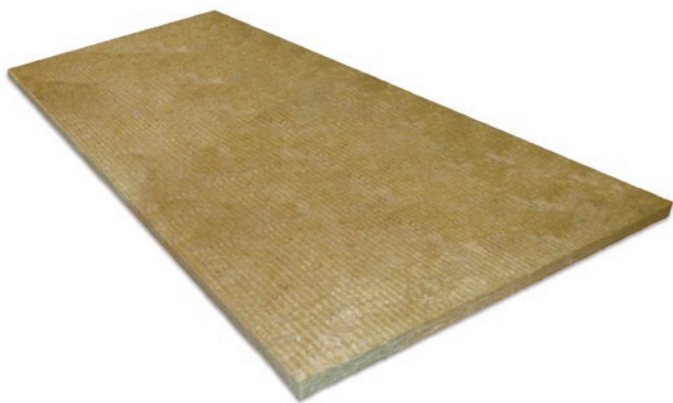
One-component low elasticity construction silicone that is very resistant to UV radiation, different weather conditions and aging. The installation silicone is neutral and mold-proof.

- **Intended use**

Suitable silicone for sealing in general construction work outdoors and indoors.

Holds perfectly most common building materials: painted steel, concrete, wood, clay brick, aluminum, PVC, glass, ceramics and various plastics.





- **Product properties**

Product name	<b>Mineral wool slab EAFW206001000 8 PCS</b>
Thickness	20 mm
Width	600 mm
Length	1 000 mm
Weight	2.0 kg/slab
Package size	4.8 m <sup>2</sup> (8 slabs)

- **Material**

High density stone wool

- **Intended use**

For fire protections of panel fasteners.

- **Note**

Cut to needed width on site.



- **Product properties**

Product name **Mineral wool roll EAWS5657850**  
**2 PCS**  
 Thickness 30 mm  
 Width 565 mm  
 Length 7 850 mm  
 Weight 5.40 kg/roll  
 Package size roll (7.85 m/4.4 m²),  
 full package 2 rolls

- **Material**

Soft stone wool

- **Intended use**

For insulating space between panels (for example vertical joints and corners), for insulating space between U-Plinth purlins and panels.

- **Note**

Cut to needed width on site.



- **Product properties**

Product name **Mineral wool rol EAWS\_\_\_\_**

Panel	Mineral wool roll		Width (mm)	Thick-ness (mm)	Package size (m/pcs)	Weight (kg) per package
SPA100	EAWS857850	9 PCS	85	30	70.65/9	7.29
SPA125	EAWS1107850	7 PCS	110	30	54.95/7	7.35
SPA150	EAWS13511000	8 PCS	135	40	88.00/8	9.50
SPA175	EAWS16011000	7 PCS	160	40	77.00/7	9.90
SPA200	EAWS1807850*	4 PCS	180	30	31.40/4	4.93
SPA200	EAWS18011000	6 PCS	180	40	66.00/6	9.50
SPA230	EAWS2207850*	3 PCS	220	30	23.55/3	4.52
SPA230	EAWS22011000	5 PCS	220	40	55.00/5	9.70
SPA300	EAWS2857850	3 PCS	285	30	23.4/3	8.9

- **Material**

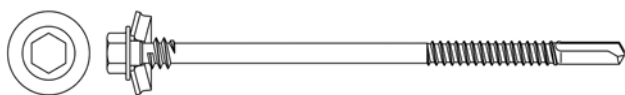
Soft mineral wool

- **Intended use**

For insulating space between panels (for example vertical joints and corners), for insulating space between U-Plinth purlins and panels.

\*To be used in Ruukki Firewall system.





#### • Product properties

Product name **Panel screw for steel (4-12mm)**  
 Head hexagon head 8 mm  
 Package size 100 pcs

Panel	Screw ____	Size (thickness x length) (mm)
SPA100	SP screw CB 100 steel 4.0-12 100	5,5 x 138
SPA125	SP screw CB 125 steel 4.0-12 100	5,5 x 158
SPA150	SP screw CB 150 steel 4.0-12 100	5,5 x 188
SPA175	SP screw CB 175 steel 4.0-12 100	5,5 x 218
SPA200	SP screw CB 200 steel 4.0-12 100	5,5 x 248
SPA230	SP screw CB 230 steel 4.0-12 100	5,5 x 288
SPA300	SP screw CB 300 steel 4.0-12 100	5,5 x 348

#### • Material

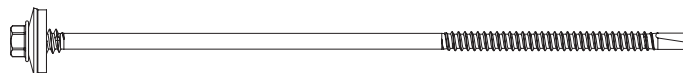
Screw: Durocoat coated carbon steel  
 Washer: stainless steel 19 mm, sealed

#### • Intended use

For fastening panels to 4 - 12 mm steel

#### • Note

Self-drilling screw



#### • Product properties

Product name **Panel screw for steel (1.5-4mm)**  
 Head hexagon head 8 mm  
 Package size 100 pcs

Panel	Screw ____	Size (thickness x length) (mm)
SPA100	SP screw CB 100 steel 1.5-4.0 100	5,5 x 128
SPA125	SP screw CB 125 steel 1.5-4.0 100	5,5 x 148
SPA150	SP screw CB 150 steel 1.5-4.0 100	6,3 x 190
SPA175	SP screw CB 175 steel 1.5-4.0 100	5,5 x 208
SPA200	SP screw CB 200 steel 1.5-4.0 100	5,5 x 238
SPA230	SP screw CB 230 steel 1.5-4.0 100	5,5 x 278

#### • Material

Screw: Durocoat coated carbon steel  
 Washer: stainless steel 19 mm, sealed

#### • Intended use

1,5 - 4 mm steel

#### • Note

Self-drilling screw

#### • Product properties

Product name **Panel screw for steel (3-14mm), Stainless steel**  
 Head hexagon head 8 mm  
 Package size 100 pcs (package size for SPA 300 is 50 pcs)

Panel	Screw ____	Size (thickness x length) (mm)
SPA100	SP screw A2 100 steel 3.0-14 100	5,8 x 150
SPA125	SP screw A2 125 steel 3.0-14 100	5,8 x 170
SPA150	SP screw A2 150 steel 3.0-14 100	5,8 x 200
SPA175	SP screw A2 175 steel 3.0-14 100	5,8 x 230
SPA200	SP screw A2 200 steel 3.0-14 100	5,8 x 260
SPA230	SP screw A2 230 steel 3.0-14 100	5,8 x 300
SPA300	SP screw A4 300 steel 3.0-14 50	5,8 x 355

#### • Material

Screw: stainless steel, AISI 304  
 Washer: stainless steel 19 mm, sealed

#### • Intended use

For fastening panels to 3 - 14 mm steel

#### • Note

Self-drilling screw

#### • Product properties

Product name **Panel screw for steel (1,5-4mm), Stainless steel**  
 Head hexagon head 8 mm  
 Package size 100 pcs

Panel	Screw ____	Size (thickness x length) (mm)
SPA100	SP screw A2 100 steel 1.5-4.0 100	6,3 x 140
SPA125	SP screw A2 125 steel 1.5-4.0 100	6,3 x 160
SPA150	SP screw A2 150 steel 1.5-4.0 100	6,3 x 190
SPA175	SP screw A2 175 steel 1.5-4.0 100	6,3 x 250
SPA200	SP screw A2 200 steel 1.5-4.0 100	6,3 x 250
SPA230	SP screw A2 230 steel 1.5-4.0 100	6,3 x 290
SPA300	SP screw A4 300 steel 1.5-4.0 100	6,3 x 345

#### • Material

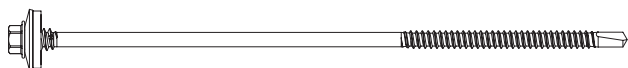
Screw: stainless steel, AISI 304  
 Washer: stainless steel 19 mm, sealed

#### • Intended use

1,5 - 4 mm steel

#### • Note

Self-drilling screw



- **Product properties**

Product name **Panel screw for wood**  
 Head hexagon head 8 mm  
 Package size 100 pcs

Panel	Screw ____	Size (thickness x length) (mm)
SPA100	SP screw CB 100 wood 100	6,5 x 150
SPA125	SP screw CB 125 wood 100	6,5 x 175

- **Material**

Screw: Durocoat coated carbon steel  
 Washer: stainless steel 19 mm, sealed

- **Intended use**

For fastening panels to timber

- **Note**

Self-drilling screw

- **Product properties**

Product name **Panel screw for wood, stainless steel**  
 Head hexagon head 8 mm  
 Package size 100 pcs

Panel	Screw ____	Size (thickness x length) (mm)
SPA100	SP screw A2 100 wood 100	6,3 x 160
SPA125	SP screw A2 125 wood 100	6,3 x 190
SPA150	SP screw A2 150 wood 100	6,3 x 220
SPA175	SP screw A2 175 wood 100	6,3 x 250
SPA200	SP screw A2 200 wood 100	6,3 x 290
SPA230	SP screw A2 230 wood 100	6,3 x 290

- **Material**

Screw: stainless steel, AISI 304  
 Washer: stainless steel 19 mm, sealed

- **Intended use**

For fastening panels to timber

- **Note**

Self-drilling screw



- **Product properties**

Product name **Panel spike for concrete**  
 Package size 100 pcs

Panel	Screw ____	Size (thickness x length) (mm)
SPA100	SP spike CB 100 concrete 100	6,3 x 152
SPA125	SP spike CB 125 concrete 100	6,3 x 178
SPA150	SP spike CB 150 concrete 100	6,3 x 203
SPA175	SP spike CB 175 concrete 100	6,3 x 229
SPA200	SP spike CB 200 concrete 100	6,3 x 254
SPA230	SP spike CB 230 concrete 100	6,3 x 279
SPA300	SP spike CB 300 concrete 100	6,3 x 356
*)	S5R48038XB 100	4,8 x 38

\*) For fastening U-Plinth purlins to concrete, no washer

- **Material**

Screw: Durocoat coated carbon steel  
 Washer: stainless steel 19 mm, sealed

- **Intended use**

For fastening panels to concrete

- **Note**

Drill bit EA2DB 63\_\_\_\_ is required for fastening

\*) EA2DB48110-50 4,8 x 110/50



- **Product properties**

Product name **Panel screw for concrete, carbon steel**  
 Head hexagon head 8 mm  
 Package size 100 pcs

Panel	Screw ____	Size (thickness x length) (mm)
SPA100	SP screw CB 100 concrete 100	7,5 x 165
SPA125	SP screw CB 125 concrete 100	7,5 x 185
SPA150	SP screw CB 150 concrete 100	7,5 x 205
SPA175	SP screw CB 175 concrete 100	7,5 x 245
SPA200	SP screw CB 200 concrete 100	7,5 x 265
SPA230	SP screw CB 230 concrete 100	7,5 x 285
SPA300	SP screw CB 300 concrete 100	7,5 x 365

- **Material**

Screw: carbon steel  
 Washer: stainless steel, 22 mm, sealed

- **Intended use**

For fastening panels to concrete

- **Note**

You will also need drill bit EA2CC6310-250 for panel thicknesses 100-175 mm and drill bit EA2CC6460-400 for panel thicknesses 200-300 mm.

- **Product properties**

Product name **Panel screw for concrete, stainless steel**  
 Head hexagon head 8 mm  
 Package size 100 pcs

Panel	Screw ____	Size (thickness x length) (mm)
SPA100	SP screw A4 100 concrete 100	7,5 x 175
SPA125	SP screw A4 125 concrete 100	7,5 x 195
SPA150	SP screw A4 150 concrete 100	7,5 x 215
SPA175	SP screw A4 175 concrete 100	7,5 x 255
SPA200	SP screw A4 200 concrete 100	7,5 x 275
SPA230	SP screw A4 230 concrete 100	7,5 x 295
SPA300	SP screw A4 300 concrete 100	7,5 x 375

- **Material**

Screw: stainless steel A4  
 Washer: stainless steel, 22 mm, sealed

- **Intended use**

For fastening panels to concrete

- **Note**

You will also need drill bit EA2CC6310-250 for panel thicknesses 100-175 mm and drill bit EA2CC6460-400 for panel thicknesses 200-300mm.

- **Product properties**

Product name **Drill bit EA2CC 63\_ \_ \_**  
 Package size pcs

Panel	Drill bit ____	Size (thickness x length) (mm)
SPA100-175	Drill bit EA2CC6310-250	6 x 310/250
SPA200-300	Drill bit EA2CC6460-400	6 x 460/400

- **Intended use**

A drill bit for panel concrete screw fasteners



- **Product properties**

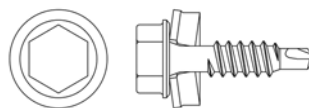
Product name **Drill bit EA2DB 63 \_\_\_\_**  
 Package size pcs

Panel	Drill bit ____	Size (thickness x length) (mm)
SPA100	EA2DB63210-150	6,3 x 210/150
SPA125	EA2DB63285-225	6,3 x 285/225
SPA150	EA2DB63285-225	6,3 x 285/225
SPA175	EA2DB63360-300	6,3 x 360/300
SPA200	EA2DB63360-300	6,3 x 360/300
SPA230	EA2DB63360-300	6,3 x 360/300
SPA300	EA2DB63510-450	6.3 x 510/450
*)	EA2DB48110-50	4,8 x 110/50

- **Intended use**

For fastening panels to concrete

\*) For fastening U-Plinth purlins to concrete



- **Product properties**

Product name **Screw S1H48023L02A4RR\_\_B 100**  
 Head hexagon head 8 mm  
 Package size 100 pcs

- **Material**

Screw: carbon steel  
 Washer: aluminium 14 mm, sealed

- **Colours**

RR20, 21, 22, 23, 29, 33, 35, 40, 41, 45

- **Intended use**

For fastening flashings and window frame studs to panels

- **Note**

Self-drilling screw



- **Product properties**

Product name **Screw S1H48023L02A4GALVB 100**  
 Head hexagon head 8 mm  
 Package size 100 pcs

- **Material**

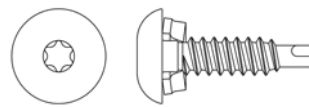
Screw: carbon steel  
 Washer: aluminium 14 mm, sealed

- **Intended use**

For fastening eave purlins and fastening plates to panels.

- **Note**

Self-drilling screw



- **Product properties**

Product name **Screw S1T48023L02A0RR\_\_B 100**  
 Head rounded head Torx T20  
 Package size 100 pcs

- **Material**

Screw: carbon steel  
 Washer: aluminium 10 mm, sealed

- **Colours**

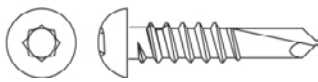
RR20, 21, 22, 23, 29, 33, 35, 40, 41, 45

- **Intended use**

For fastening flashings and window frame studs to panels.

- **Note**

Self-drilling screw



- **Product properties**

Product name **Screw S3R48022D02A0D 500**  
 Head rounded head Torx T20  
 Package size 500 pcs

- **Material**

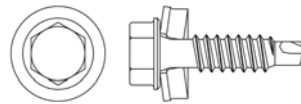
Screw: stainless steel  
 No washer

- **Intended use**

For fastening flashings and window frame studs to panels

- **Note**

Self-drilling screw



- **Product properties**

Product name **Screw S3H55025L02S4B 100**  
 Head hexagon head 8 mm  
 Package size 100 pcs

- **Material**

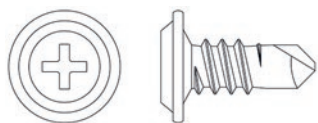
Screw: stainless steel  
 Washer: stainless steel 14 mm, sealed

- **Intended use**

For fastening flashings and rainscreen panels and starting fillets to panels

- **Note**

Self-drilling screw



- **Product properties**

Product name **Screw S1E42013G\_\_\_\_\_**  
 Head flat PH2 head  
 Package size 1000 pcs

- **Material**

Screw: carbon steel  
 No washer

- **Colours**

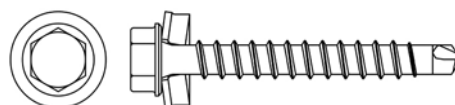
RR20: Screw S1E42013GRR20E 1000  
 Zn: Screw S1E42013GE 1000  
 Other colours: Screw S1E42013GE 1000 SC

- **Intended use**

For fastening interior flashings and window frame studs to panels.

- **Note**

Self-drilling screw



- **Product properties**

Product name **Screw S3H55042WA4B 100**  
 Head hexagon head 8 mm  
 Package size 100 pcs

- **Material**

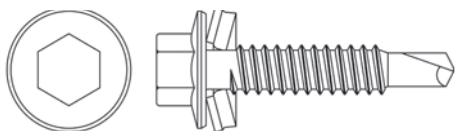
Screw: stainless steel  
 Washer: aluminium 14 mm, sealed

- **Intended use**

For fastening U-Plinth purlins to timber.

- **Note**

Self-drilling screw



- **Product properties**

Product name **Screw S1H63032L03S6GALVB 100**  
 Head hexagon head 8 mm  
 Package size 100 pcs

- **Material**

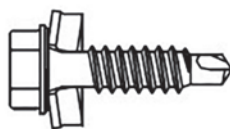
Screw: carbon steel  
 Washer: stainless steel 16 mm, sealed

- **Intended use**

For fastening door frame studs and support studs (1.0–2.0mm) to panels.

- **Note**

Self-drilling flanged screw



- **Product properties**

Product name **Overlap screw S3H55025L02S4CRR32 250**  
 Head hexagon head 8 mm  
 Package size 250 pcs

- **Material**

Screw: stainless steel  
 Washer: 14 mm stainless steel, sealed

- **Intended use**

For flashings' installation. This accessory is to be used with Ruukki Patina panel details.

- **Note**

Painted in RR32



- **Product properties**

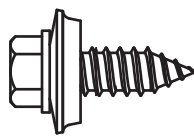
Product name **Overlap screw S3H65020TCF5C 250**  
 Head hexagon head 8 mm  
 Package size 250 pcs/pack

- **Material**

crew: stainless steel  
 Washer: stainless steel

- **Intended use**

For flashing and start purlin installations on sandwich panels. Used in attaching the L-purlin to the Ruukki Firewall system, when installation of the system starts from concrete floor. Pre-hole Ø 6.50–7.20.



- **Product properties**

Product name **Screw 6,3 x 19 HX8 A2**  
 Head hexagon head 8 mm  
 Package size 100 pcs/pack

- **Material**

crew: stainless steel  
 Washer: stainless steel, sealed

- **Intended use**

Special stainless steel fastener for sandwich brackets. Used for installing the sandwich brackets directly to the surface of the sandwich panel.

● Specific for SPA Patina panel detailed drawings.



- **Product properties**

Product name: **Rubber o-ring sealing EA2R0S**

Weight: 0.009 kg

Package size: 2 pcs/pack

- **Material:**

Rubber o-ring

- **Intended use**

To be used as separator between countersunk washer EA2W40-910S and steel facing of Patina panels. This accessory is to be used with Ruukki Patina panel details.



- **Product properties**

Product name **Separating strip EPDM CA3SE410**

Width 10 mm

Thickness 4 mm

Length: 125m/roll

Package size: 1 roll

- **Material**

EPDM cellular rubber,  
one-sided glass fibre reinforced adhesive tape

- **Intended use**

To be installed as a separating element between flashing screw, flashing and panel. This accessory is to be used with Ruukki Patina panel details.



- **Product properties**

Product name **Hole saw EA2HS D27**

Package size pcs

- **Intended use**

For drilling holes for countersunk fastenings.

- **Note**

Hole 27 mm is suitable for Washer EA2W40-910S.

● Specific for SPA Patina panel detailed drawings.



- **Product properties**

Product name **Washer EA2WS29**  
Package size 100 pcs

- **Material**

Stainless steel 29 mm, sealed

- **Intended use**

Larger washer to panel fasteners.

- **Note**

In cases where higher load bearing capacity of panel fastenings is required.



- **Product properties**

Product name **Washer EA2W40-910S**  
Package size 100 pcs

- **Material**

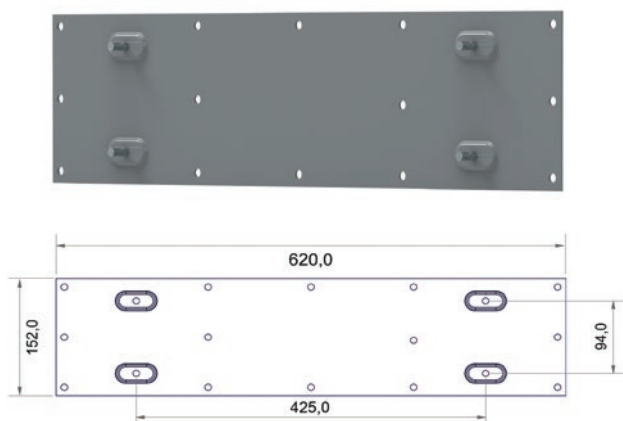
Stainless steel, not sealed

- **Intended use**

For countersunk fastening

- **Note**

Panel fasteners' standard washer has to be removed. A 27 mm hole is required (drilled by Hole saw EA6PS).



- **Product properties**

Tuotenimi **Sandwich bracket for the ladder**  
Length 620 mm  
Weight 1,85 kg/pc  
Fastening holes  $\varnothing$  8,0 x 14 pcs  
River bolt M8x20 – A2 x 4 pcs  
Package size pc

- **Materials, coatings and colors**

Hot-dip galvanized powder-coated steel sheet  
RR20, RR21, RR23, RR29, RR33, RR40, RR41

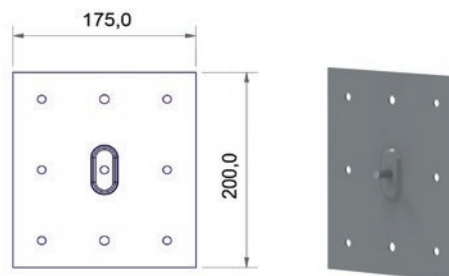
- **Intended use**

Suitable for installing a ladder frame as a wall ladder on the surface of a sandwich panel. Use Screw 6.3 x 19 HX8 A2 for fastening. Order product.

- **Note**

During the installation, the watertightness of the bracket, plate and mounting base must be taken care of.

**48** EN Sandwich panel SPA. Accessory product description



- **Product properties**

Product name **Sandwich bracket 1-bolt**  
Length 175 mm  
Weight 0.69 kg/pc  
Fastening holes  $\varnothing$  8,0 x 8 pcs  
River bolt M8x20 – A2 x 1 pc  
Package size pc

- **Materials, coatings and colors**

Hot-dip galvanized powder-coated steel sheet  
RR20, RR21, RR23, RR29, RR33, RR40, RR41

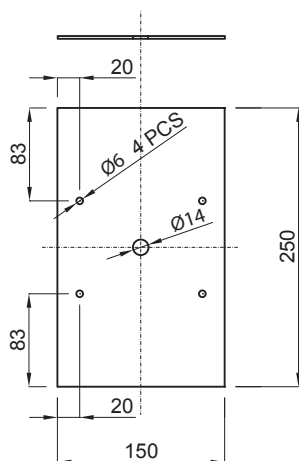
- **Intended use**

Fixing plate for installing light installations, such as lights, on the surface of the Sandwich panel. Use Screw 6.3 x 19 HX8 A2. Order product.

- **Note**

During the installation, the watertightness of the bracket, plate and mounting base must be taken care of.





#### • Product properties

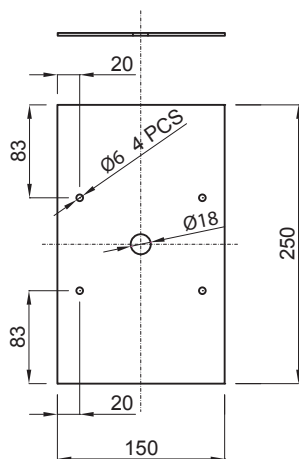
Product name	<b>Fastening plate EA6FP1</b>
Length	250 mm
Width	150 mm
Material thickness	2.50 mm
Weight	0.74 kg/pcs
Package size	pcs

#### • Material

Continuously hot-dip coated steel (EN 10346)  
Zinc coated Zn

#### • Intended use

For threaded sleeve fastenings of panels.



#### • Product properties

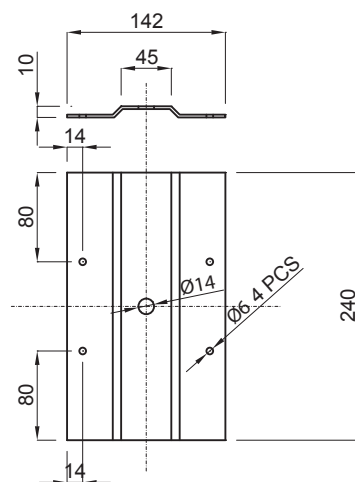
Product name	<b>Fastening plate EA6FP3</b>
Length	250 mm
Width	150 mm
Material thickness	2.50 mm
Weight	0.74 kg/pcs
Pakkauskoko	pcs

#### • Material

Continuously hot-dip coated steel (EN 10346)  
Zinc coated Zn

#### • Intended use

For threaded sleeve fastenings of panels. Available on special order (non-stock item).



#### • Product properties

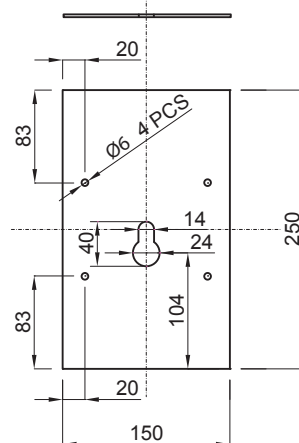
Product name	<b>Fastening plate EA6FP2</b>
Length	240 mm
Width	142 mm
Material thickness	2.50 mm
Weight	0.74 kg/pcs
Package size	pcs

#### • Material

Continuously hot-dip coated steel (EN 10346)  
Zinc coated Zn

#### • Intended use

For threaded sleeve fastenings of panels. Available on special order (non-stock item).



#### • Product properties

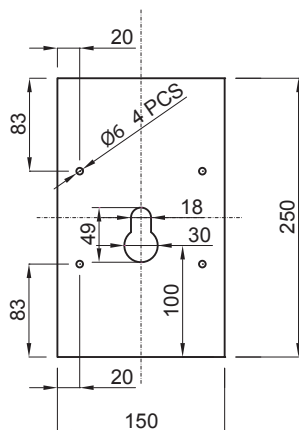
Product name	<b>Fastening plate EA6FP4</b>
Length	250 mm
Width	150 mm
Material thickness	2.50 mm
Weight	0.74 kg/pcs
Pakkauskoko	pcs

#### • Material

Continuously hot-dip coated steel (EN 10346)  
Zinc coated Zn

#### • Intended use

For threaded sleeve fastenings of panels.



- **Product properties**

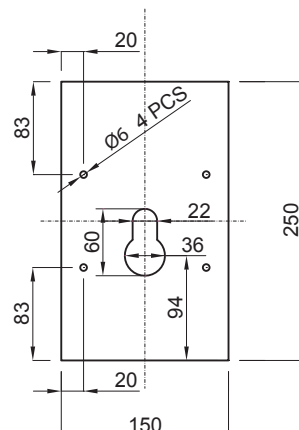
Product name	<b>Fastening plate EA6FP5</b>
Length	250 mm
Width	150 mm
Material thickness	2.50 mm
Weight	0.74 kg/pcs
Package size	pcs

- **Material**

Continuously hot-dip coated steel (EN 10346)  
Zinc coated Zn

- **Intended use**

For threaded sleeve fastenings of panels. Available on special order (non-stock item).



- **Product properties**

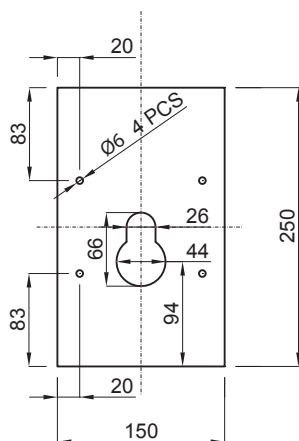
Product name	<b>Fastening plate EA6FP6</b>
Length	250 mm
Width	150 mm
Material thickness	2.50 mm
Weight	0.74 kg/pcs
Package size	pcs

- **Material**

Continuously hot-dip coated steel (EN 10346)  
Zinc coated Zn

- **Intended use**

For threaded sleeve fastenings of panels. Available on special order (non-stock item).



- **Product properties**

Product name	<b>Fastening plate EA6FP7</b>
Length	250 mm
Width	150 mm
Material thickness	2.50 mm
Weight	0.74 kg/pcs
Package size	pcs

- **Material**

Continuously hot-dip coated steel (EN 10346)  
Zinc coated Zn

- **Intended use**

For threaded sleeve fastenings of panels. Available on special order (non-stock item).



- **Product properties**

Product name **Lifting tool case horizontal**  
**EA6LTALAH1 /**  
**EA6LTALAH2**

Weight 23.0 kg/case

Package size 2 lifting tools/case

- **Lifting tool colour**

Blue

- **Intended use**

For installation of horizontal wall panels

- **Note**

Lifting tool case horizontal EA6LTALAH1  
 = lifting tool FOR RENT

Lifting tool case horizontal EA6LTALAH2  
 = lifting tool FOR SALES (no return)

- **Maximum panel lengths allowed by lifting tools**

Panel	Lifting tool and secure lifting sling / Maximum panel length	Lifting tool and secure lifting sling / Maximum panel length
80	7.7 m	2 pcs / 15.4 m
100	6.9 m	2 pcs / 13.8 m
125	6.0 m	2 pcs / 12.0 m
150	5.3 m	2 pcs / 10.6 m
175	4.9 m	2 pcs / 9.8 m
200	4.5 m	2 pcs / 9.0 m
200+	4.5 m	2 pcs / 9.0 m
230	4.0 m	2 pcs / 8.0 m
300	4.8 m	2 pcs / 9.6 m



- **Product properties**

Product name **Lifting tool case vertical  
EA6LTALAVD**

Weight 26.0 kg/case

Package size 2 lifting tools/case

- **Lifting tool colour**

Red

- **Intended use**

For installation of vertical and diagonal wall panels and cut horizontal wall panels.

- **Note**

Lifting tool FOR RENT

- **Maximum panel lengths permitted by lifting tools**

Panel	Lifting tool and safety strap/ Max. length of the panel	Lifting tool and safety strap/ Max. length of the panel
SPA100	1 pcs/6.0 m	
SPA125	1 pcs/6.0 m	
SPA150	1 pcs/5.6 m	2 pcs/6.0 m
SPA175	1 pcs/5.0 m	2 pcs/6.0 m
SPA200	1 pcs/4.6 m	2 pcs/6.0 m
SPA230	1 pcs/4.0 m	2 pcs/6.0 m



- **Product properties**

Product name	<b>VACUUM LIFTER 140 WALL</b> <b>VACUUM LIFTER 152 WALL</b>
Weight	350.0 kg/lifting tool (with transport case)
Package size	1 lifting tool
Manufacturer's code	Clad Boy 140/Clad Boy 152

- **Intended use**

For installation of horizontal and vertical wall panels and cut wall panels.

- **Note**

Lifting tools FOR RENT, operated according to separate instruction.



- **Product properties**

Product name	<b>VACUUM LIFTER 1285 ROOF</b>
Weight	368.5 kg/lifting tool (with transport case)
Package size	1 lifting tool
Manufacturer's code	Clad Boy 1285

- **Intended use**

For installation of PU roof panels ,and if necessary, for installation of horizontal SPA wall panels and cut horizontal SPA wall panels.

- **Note**

Lifting tool FOR RENT, operated according to separate instructions.



- **Product properties**

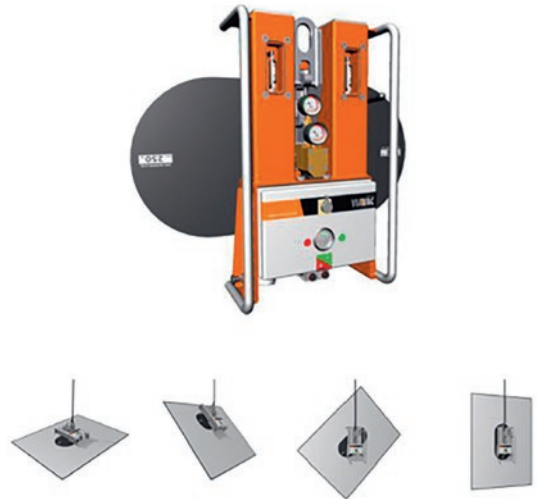
Product name	<b>VACUUM LIFTER CB4 ROOF</b>
Weight	100.0 kg/lifting tool
Package size	1 lifting tool
Manufacturer's code	ViaVac CB-4

- **Intended use**

For installation of PU roof panels, horizontal SPA wall panels and cut horizontal SPA wall panels.

- **Note**

Lifting tools FOR RENT, operated according to separate instruction.



- **Product properties**

Product name	<b>VACUUM LIFTER CBDC 375 WALL</b>
Weight	70.0 kg/lifting tool
Package size	1 lifting tool
Manufacturer's code	ViaVac CBdc

- **Intended use**

For installation of horizontal and vertical wall panels and cut wall panels.

- **Note**

Lifting tools FOR RENT, operated according to separate instruction.

We make steel-based products for walls and roofs, for both commercial buildings and private homes. We're a supplier of high-quality products, systems and solutions, developed sustainably and to live up to the highest demands on durability in harsh conditions.

This publication is accurate to the best of our knowledge and understanding. Although every effort has been made to ensure accuracy, the company does not assume any responsibility for any errors or decisions, or any direct, indirect or consequential damage caused by incorrect application of the this information. We reserve the right to make changes. Always see original standards for accurate comparison. For latest technical updates, please visit [www.ruukki.com](http://www.ruukki.com).



**Ruukki Construction Oy, Panuntie 11, FI-00620 Helsinki,  
+358 (0) 20 59 150, [www.ruukki.com](http://www.ruukki.com)**

Copyright© 2025 Ruukki Construction. All rights reserved. Ruukki and Ruukki's product names are trademarks or registered trademarks of Rautaruukki Corporation, a subsidiary of SSAB.