

Ruukki® Sono

Acoustic element



Ruukki® Sono – acoustic element

Ruukki® Sono element is part of the Ruukki® Acoustic Environment Solution. The element offers the best sound absorption on the market and improves acoustic comfort in offices, sports and multipurpose buildings, as well as industrial environments, creating a calmer and more productive atmosphere. It is suitable for use in both new constructions and as additional structure in dry indoor spaces.

TECHNICAL PROPERTIES

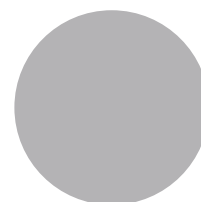
- Nominal width of the element: 1200 mm, can be split into for example 2 x 600 mm
- Thicknesses: 100 mm and 150 mm
- Standard length of the element: 2000–9000 mm
- Installation direction: Horizontal or vertical
- Thermal insulation: U-value (W/m²K) 0.40 / 100 mm
- Reaction to fire: C1-s1, d0
- Fire resistance of the element: EI30 (4 m horizontal installation)

COATINGS AND COLORS

Polyester coated steel, stock colors:



RR20 WINTER WHITE



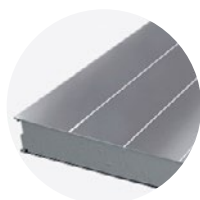
RR21 PEBBLE GREY

Other standard colors and coatings, minimum delivery quantity 150 m².

PROFILE OPTIONS



RIB 150 -PROFILE



RIB 200 -PROFILE



RIB 600 -PROFILE



FLAT

ELEMENT AS A PARTITION WALL

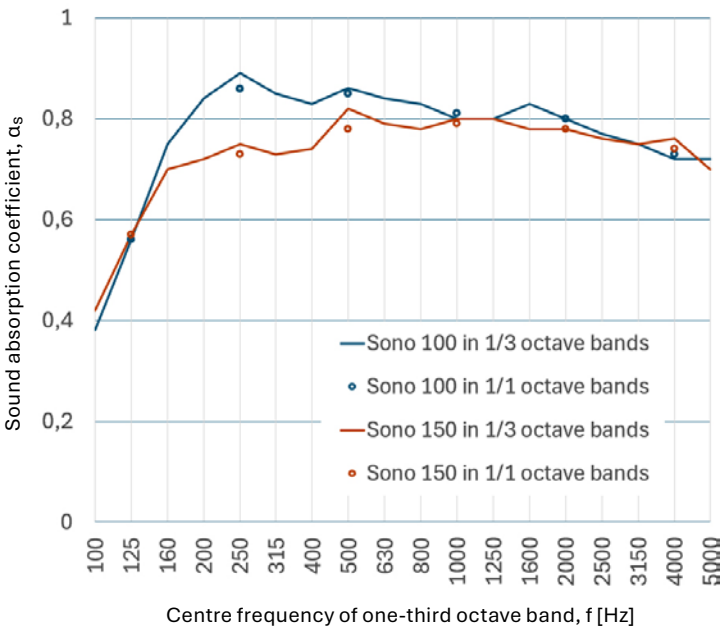


ACOUSTIC PERFORMANCE

- Sound attenuation: Excellent
acoustic performance α_w up to 0.85
- Sound absorption class: B
- Airborne sound insulation: 32...33 dB

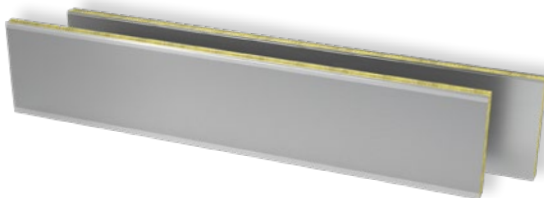
Sound absorption values
(according to EN ISO 354 and ISO 11654)

	Sono 100	Sono 150
Frequency [Hz]	α_p	α_p
125	0,55	0,55
250	0,85	0,75
500	0,85	0,75
1000	0,80	0,80
2000	0,80	0,80
4000	0,75	0,75
α_w	0,85	0,80
Class	B	B



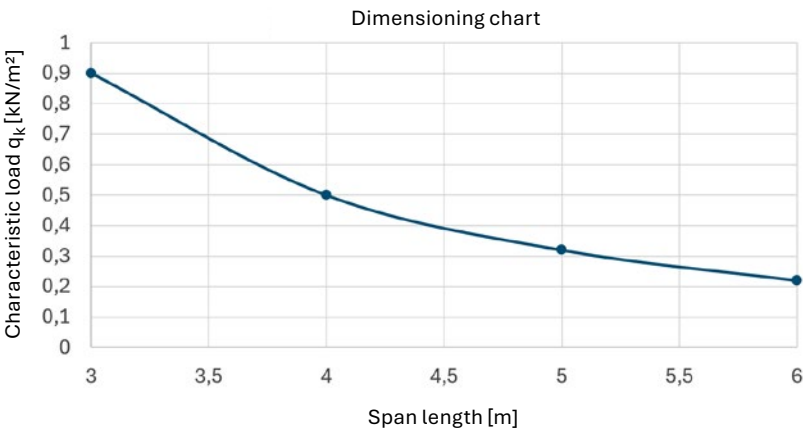
Airborne sound insulation
(according to ISO 10140-2:2022 and ISO 717-1:2020)

	Sono 100	Sono 150
R_w	32 dB	33 dB
R_w+C	30 dB	30 dB
R_w+C_{tr}	28 dB	29 dB



STRUCTURAL PERFORMANCE
SONO 100 & 150

Maximum characteristic variable load in relation to span length according to the attached figure. The curves include the partial factor ($\gamma_F = 1,5$) for load and partial factor (γ_M) for material. Two element screws are applied at each element end.



ELEMENT AS AN ADDITIONAL LAYER



CONTACT INFORMATION:

Sales service	+358 20 592 7774	weekdays 8 am - 4 pm
Technical advice	+358 20 592 7776	weekdays 8 am - 4 pm
Transport services	+358 20 592 7775	weekdays 8 am - 4 pm

This publication is accurate to the best of our knowledge and understanding. Although every effort has been made to ensure accuracy, the company does not assume any responsibility for any errors or decisions, or any direct, indirect or consequential damage caused by incorrect application of the this information. We reserve the right to make changes. Always see original standards for accurate comparison. For latest technical updates, please visit www.ruukki.com.



Ruukki Construction Oy, Panuntie 11, 00620 Helsinki, Finland
+358 20 59 150, ruukki.com

Copyright© 2025 Ruukki Construction. All rights reserved. Ruukki, and Ruukki's, SSAB's and Piristeel's product names are trademarks or registered trademarks of Rautaruukki Corporation, SSAB or Piristeel. Rautaruukki is the subsidiary of SSAB.

