

# INSTRUCTIONS FOR FASTENING THE PANEL AND FOLLOW-UP OF THE DIMENSIONS

## FACADE CLADDINGS / LIBERTA RAINSCREEN PANELS LIBERTA™ ELEGANT 550

# RUUKKI

### FASTENING OF THE PANEL

The panel is fastened to support studs by fastening holes in the upper and right edge of the panel. To help with the the process a gap template is recommended.

See the other side of this sheet for a visual overview of the installation process. Use the QR code for a video overview.

- Pay close attention to the leveling of the first row of cassettes
- Remove drilling and cutting debris immediately to avoid rust spots
- Use of an angle grinder is forbidden
- Use touch-up paints for any scratches
- Protect products form dirt (e.g mortar, paint, PU-foam) during the whole time as they are very difficult to remove afterwards

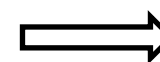
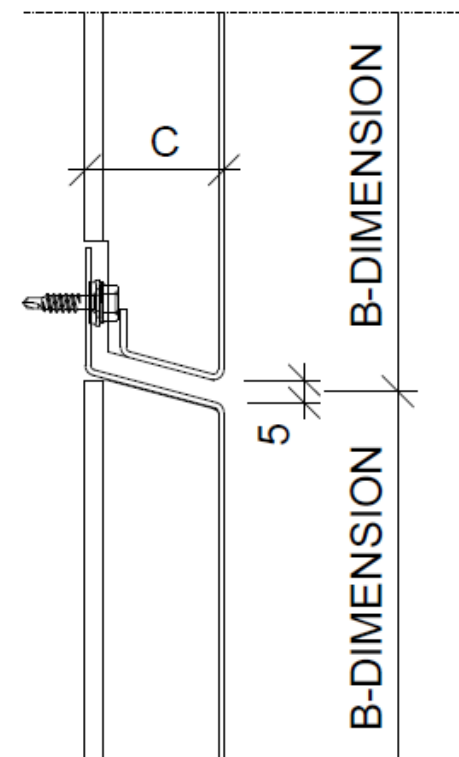
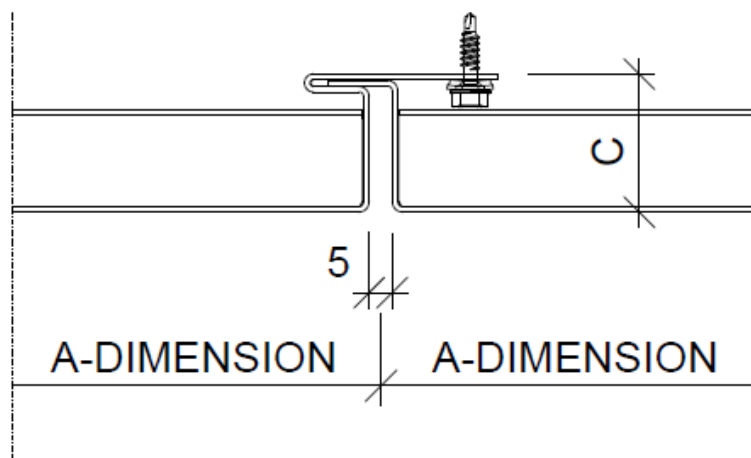
### FOLLOW-UP OF THE DIMENSIONS

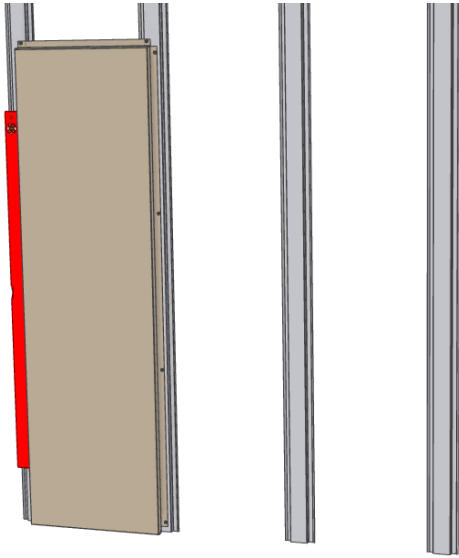
Follow the A-, B- and Dh/Dv-dimensions. Check the dimensions from the plans! Check the module height with the measuring tape constantly!

Panel tolerances:  $\pm 1$  mm (A-, B- and Dh/Dv-dimensions)

Sub frame tolerances in horizontal direction:

- For one panel:  $\pm 1$  mm
- Between each support studs:  $\pm 1$  mm

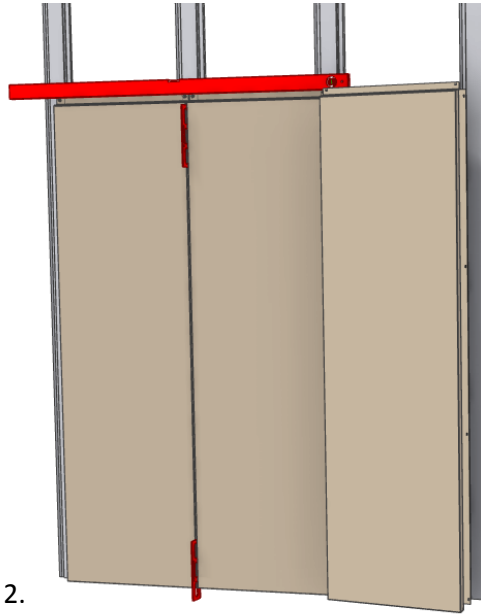




1.

Pay close attention to the alignment of the first row of Libertas!

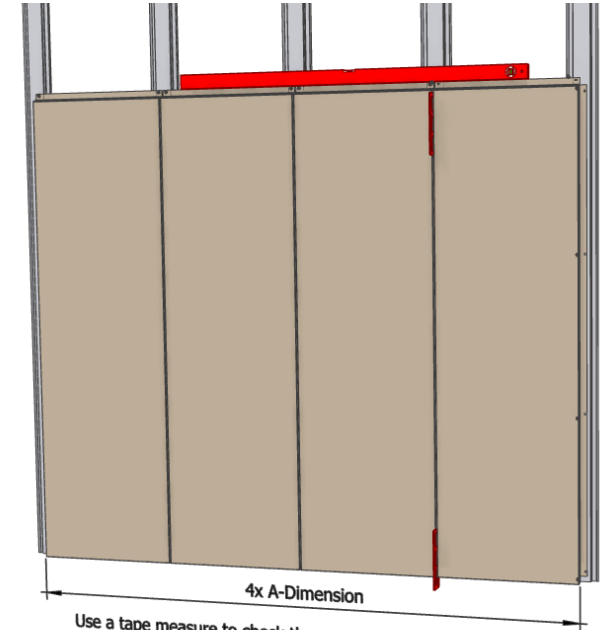
- Start by installing the first cassette
- The joint should stay at the center of the stud



2.

Pay close attention to the alignment of the first row of Libertas!

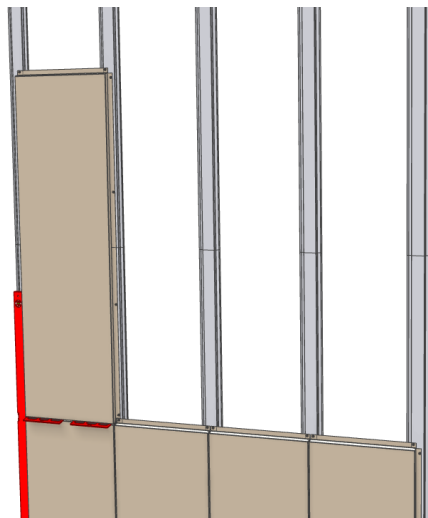
- Continue with the first row using gap templates in the vertical joint
- Level the first row



3.

Use a tape measure to check the overall width of multiple panels  
Make adjustments if necessary

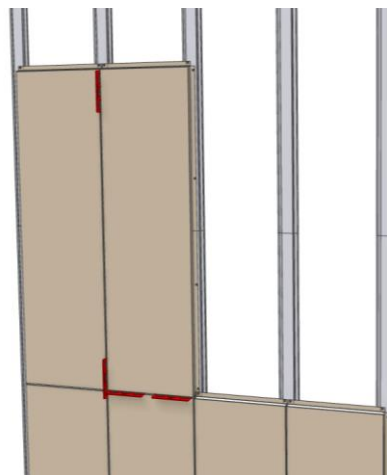
- Use a tape measure to check the overall width of 4 or more cassettes and adjust if necessary



4.

- Use the gap templates in the horizontal joint also
- Align the second row with the first

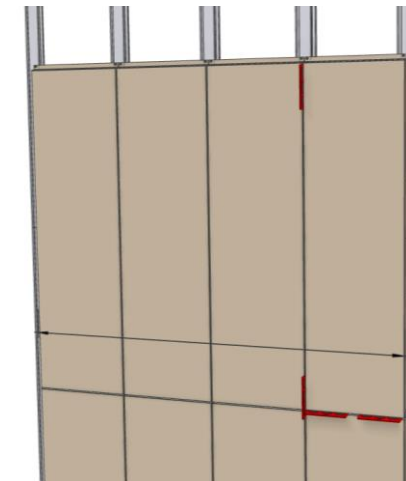
Continue installing the cassettes  
using the gap templates



5.

- Keep installing the cassettes with the templates

Continue installing the cassettes  
using the gap templates



6.

- Check the overall dimensions of several cassettes and adjust if required

Keep checking the overall dimension of  
4-5 cassettes and adjust if necessary

4x A-Dimension