

INSTRUCTIONS FOR FASTENING THE PANEL AND FOLLOW-UP OF THE DIMENSIONS

FACADE CLADDINGS / RUUKKI PREMIUM PANELS PRIMO PLANA 10



FASTENING OF THE PANEL

The panel is fastened to support studs by fastening holes in the panel with special ACM screws. One corner of the panel is fixed through a 5 mm hole. Others are floating fastening holes requiring the use of special grommet.

- Pay close attention to the leveling of the first row of panels
- Remove drilling and cutting debris immediately to avoid rust spots
- Use of an angle grinder is forbidden
- Use touch-up paints for any scratches
- Protect products from dirt (e.g. mortar, paint, PU-foam) during the whole time as they are very difficult to remove afterwards

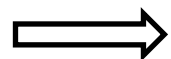
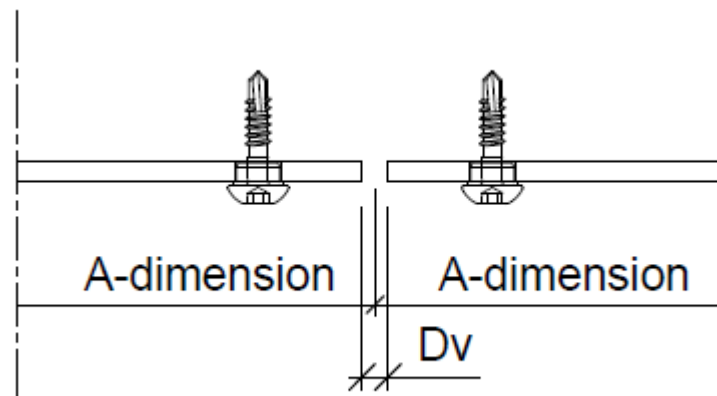
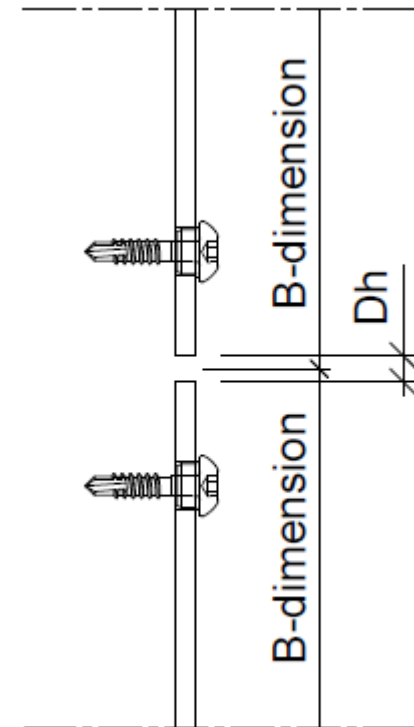
FOLLOW-UP OF THE DIMENSIONS

Follow the A-, B- and Dh/Dv-dimensions. Check the dimensions from the plans! Check the module height with the measuring tape constantly!

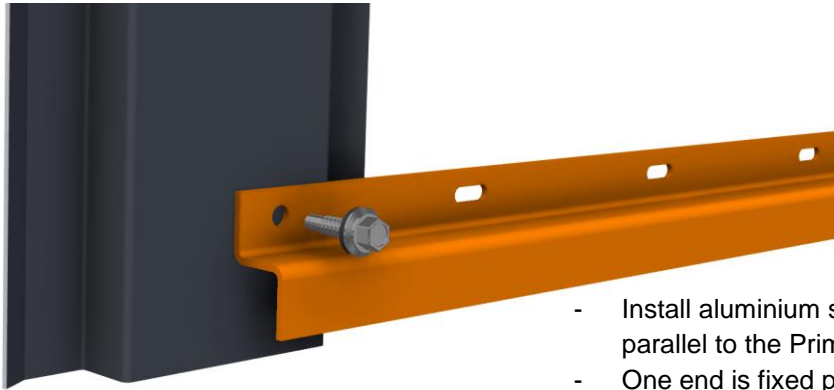
Panel tolerances: ± 1 mm (A-, B- and Dh/Dv-dimensions)

Sub frame tolerances in horizontal direction:

- For one panel: ± 1 mm
- Between each support studs: ± 1 mm

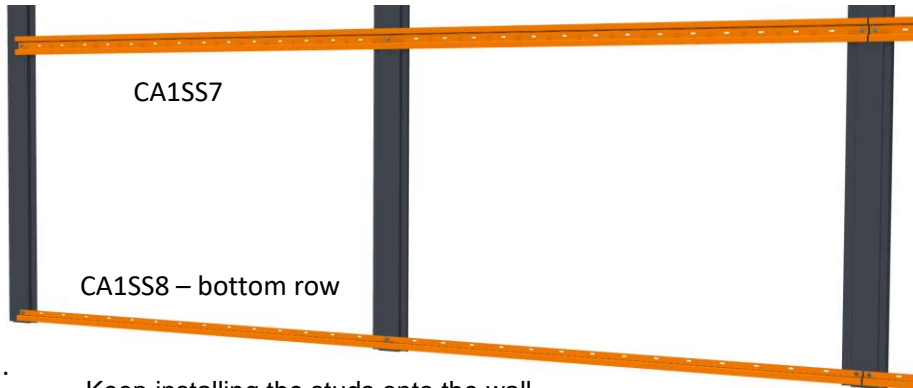
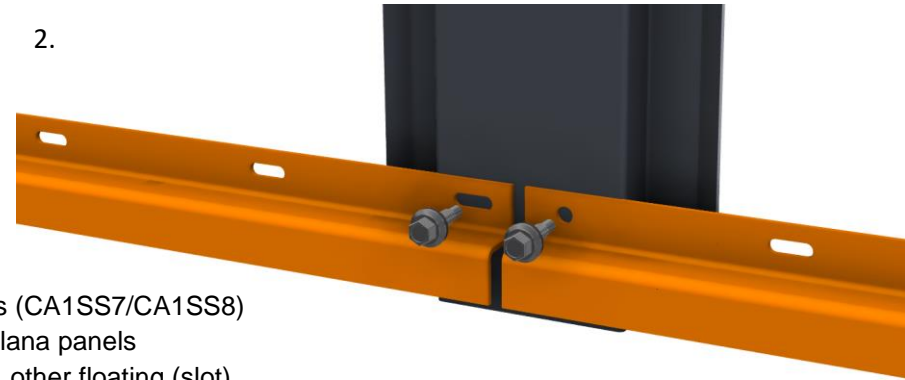


1.



- Install aluminium studs (CA1SS7/CA1SS8) parallel to the Primo Plana panels
- One end is fixed point, other floating (slot)
- Use self-drilling screws e.g S3H48020D03A4

2.



3.

- Keep installing the studs onto the wall
- Leave a 5 mm gap between the ends of the studs for thermal expansion

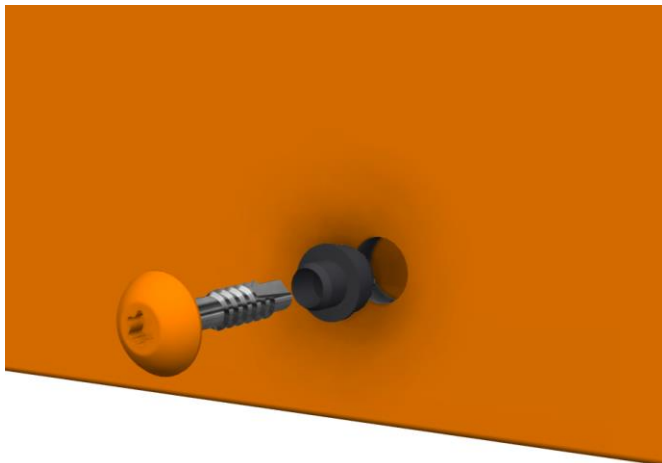
4.



- Fasten the panel from the fixed point in one corner
- Use self-drilling screws

5.

- Make sure the panel is level
- Use special centering grommet in the following holes
- Fasten the panel with self drilling screws



6.

- Use gap templates for correct gap width
- Continue installing the panels on to the studs
- Check the overall width and height every 3-4 panels

