

# Facade claddings

Product Catalogue 2021

# A facade that completes your vision



Ruukki's facade claddings offer you endless variations to use in designing your architectural objectives to your project requirements. You can use our products to find your own combination of surface structures, patterns, colours and materials. By using our carefully developed details you will gain our full technical and manufacturing knowhow to support you.

Read more:  
**[www.ruukki.no](http://www.ruukki.no)**



## **Content:**

- Ruukki® Primo facade cassettes**
- Ruukki Liberta® facade cassettes**
- Ruukki® Lamella facade claddings**
- Ruukki® Design profiles**
- Bespoke claddings according to Architects idea**
- Ruukki® Emotion facade system**
- Ruukki Forma® wall system**
- Selection of raw materials**
- Design tools**
- Quality**

# Ruukki® Primo

Ruukki® Primo is our premium facade cassette system with unique design features

- Big flat surfaces enable high-end design solutions
- Tilted joints (Primo Skyline)
- Continuously adjustable joint widths
- Individually replaceable panels
- Clear and sophisticated portfolio
- Extensive design and technical support
- Trusted processes and market-wide expertise
- Extensive selection of finishes and colours.

Read more:  
[www.ruukki.no](http://www.ruukki.no)



RUUKKI® PRIMO SKYLINE 100



KVERNELAND BIL, JAGUAR OG LAND ROVER, HAUGESUND, NORWAY. FACADE PRODUCT: RUUKKI® PRIMO SKYLINE 100.

# Ruukki Liberta®

---

Ruukki Liberta® facade cassettes are folded on all sides to offer maximum rigidity with concealed or visible fixing solutions.

The panel system provides easy and quick installation for a fully finished facade, complete with accessories designed and manufactured to maintain accurate and project-specific dimensions. The panels come in an extensive selection of materials, finishes and colours.

Read more:  
[www.ruukki.no](http://www.ruukki.no)



SKANSKA GRÖNA SKRAPAN, GOTHENBURG, SWEDEN.  
FACADE PRODUCT: RUUKKI LIBERTA® ELEGANT 500.

RUUKKI LIBERTA® ELEGANT 500.



# Ruukki® Lamella



MAX IV LABORATORY, LUND, SWEDEN. FACADE PRODUCT: RUUKKI® LAMELLA STRAIGHT 100.

Ruukki® Lamella facade cladding are folded along two long edges and divide facade surfaces one-directionally, be it vertically, horizontally or at an angle. Variety of shapes in the long edge detail together with hidden and concealed fixings allow you to accentuate the surface division to just the right amount. The Lamellas comes in a wide selection of shapes, materials, finishes and colours.

Read more:  
[www.ruukki.no](http://www.ruukki.no)



UPS OFFICE, KAUNAS, LITHUANIA. FACADE PRODUCT: RUUKKI® LAMELLA SHARP 45.



# Ruukki® Design Profiles

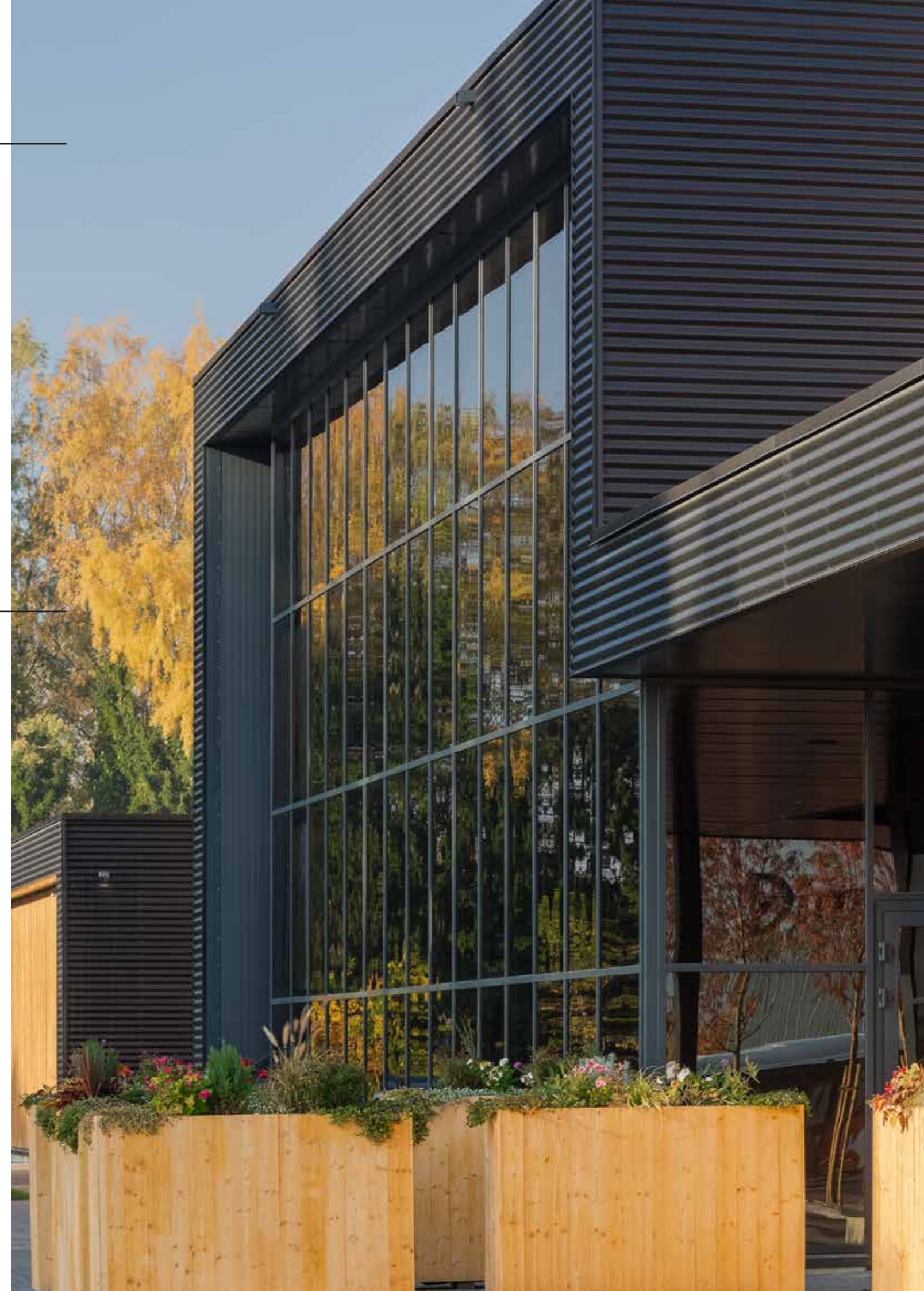
Ruukki® Design profiles create a continuous, structured facade surface. With options for both profile and material, the scale and attenuation of the surface structure can be matched to meet the architectural needs of the facade in question. The Ruukki® Design profiles system allows for easy and quick installation of a fully finished facade complete with flashings and accessories that match the facade material finish.

Read more:  
[www.ruukki.no](http://www.ruukki.no)



GARDEST HOME AND GARDEN CENTER, TARTU, ESTONIA.  
FACADE PRODUCT: RUUKKI® DESIGN TOKYO S18.

KOY HELSINGIN JALLUKKA, HELSINKI, FINLAND.  
FACADE PRODUCT: RUUKKI® DESIGN COR-TEN® S7.



# Bespoke claddings according to architects idea's

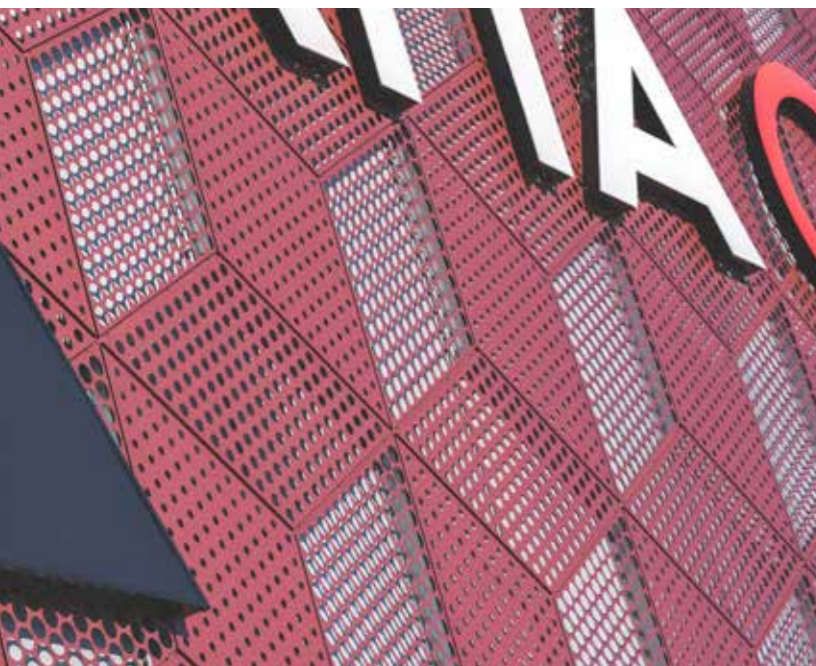
A bespoke solution can be designed in co-operation between the architect and Ruukki. Ruukki will work together with the architect to ensure architectonic, technical and economic feasibility from early design until the detailed design is finished. The final solution will be just as reliable as tried and tested product solutions.

Read more:  
[www.ruukki.no](http://www.ruukki.no)



BERTEL O. STEEN HQ, LØRENSKOG, NORWAY.  
FACADE PRODUCTS: BESPOKE PERFORATED RUUKKI LIBERTA®.

ATTA CENTRE, BUSINESS AND CONVENTION CENTRE IN LATVIA.  
FACADE PRODUCTS: RUUKKI LIBERTA® ORIGINAL 102 RAINSCREEN PANELS.



FILM MUSEUM, TALLINN, ESTONIA.  
FACADE PRODUCTS: RUUKKI® SPECIAL COR-TEN® LAMELLAS.



ULVEN TERRASSE, ULVEN, OSLO, NORWAY.  
FACADE PRODUCTS: RUUKKI® SPECIAL COPPER LAMELLA.



# Ruukki® Emotion



TÅRNET KULTURARENA, OSLO, NORWAY.

FACADE PRODUCTS: RUUKKI® EMOTION SYSTEM WITH ART PERFORATED COR-TEN® 700 AND COLOURED LED BACK LIGHTING.

Most of Ruukki's products may be perforated. The hole size, mix of sizes, shapes and their distribution can be chosen according to our standard perforation portfolio, or according to a draft created by the Architect, or in cooperation with Ruukki. The perforated facades can also be backlit with Ruukki's LED-systems.

Read more:  
[www.ruukki.no](http://www.ruukki.no)



TÄNDSTICKAN 3 – OFFICE BUILDING IN SWEDEN.

FACADE PRODUCTS: RUUKKI® EMOTION SYSTEM WITH PERFORATED RUUKKI LIBERTA® ELEGANT 550.



# Ruukki Forma® facade system

Read more:  
[www.ruukki.no](http://www.ruukki.no)



Ruukki Forma® is a complete exterior wall system, combining the Ruukki® facade product of your choice with Ruukki® energy efficient sandwich panel system. Ruukki Forma® provides a wide range of aesthetic shapes, materials and colour options for exterior walls. High airtightness of the wall structure can generate up to 30% savings in a building's energy costs, and improve its energy class. The sandwich panels are also available in the highly sustainable sandwich panel model, Ruukki® Life panel with approximately 80% recycled material content.



LOGISTIC CENTRE, KLASOV, SLOVAKIA. FACADE PRODUCTS: RUUKKI FORMA® SYSTEM WITH LIBERTA® ELEGANT 500 GRANDE.

# Selection of raw materials

---

Read more:  
[www.ruukki.no](http://www.ruukki.no)



Our products offer quality, predictability and reliability in almost endless combinations of shapes, colours and materials. They offer an extremely powerful and wide aesthetical range for use as architectural and functional elements. Their technical properties of product and material combinations are equally versatile, which is why our local experts are ready to help architects and developers in identifying good solutions to meet individual projects' aesthetic, functional, technical and economic conditions.



Colour-coated steel



Stainless steel



Cor-Ten®

Rheinzink



Aluminium composite



Colour-coated Aluminium  
Powder painted aluminum  
Raw Aluminum  
Anodized Aluminum



Copper, brass and bronze



Glass



# Colour-coated steel

---

Colour-coated metal facade products are our most requested products, thanks to a vast product assortment, high durability and sustainability it is simply an excellent choice with good value for money. GreenCoat Hiarc is a zinc-coated steel painted on both sides in carefully monitored factory conditions. Powder painting is an option, if for example we do not have the colour of choice in our standard colorcoating chart. We may then offer a wide range of RAL colours, even for relatively small facade areas.

Read more:  
[www.ruukki.no](http://www.ruukki.no)



RIMI – A LOGISTICS CENTRE, LATVIA.  
FACADE PRODUCTS: RUUKKI LIBERTA® 102 GRANDE AND RUUKKI® DESIGN TOKYO S18.



# Stainless steel

---

We offer products made of stainless steel or acid resistant stainless steel, in a variety of alloys. Our extended assortment contains also products made of our coated acid resistant stainless steel, for example to the offshore industry. Acid resistant stainless steel, in the correct alloy for the purpose & environmental conditions, maintains its shine and appearance very well and, as a solid material it is very easy to maintain. They are available in a variety of surface finishes that give them different levels of reflectivity and different textures. Stainless steels can, except be coated also, be colored by vaporizing a titanium alloy on the surface.

Read more:  
[www.ruukki.no](http://www.ruukki.no)



RAY'S HQ, ESPOO, FINLAND.  
FACADE PRODUCTS: RUUKKI LIBERTA®.



# Cor-Ten®

---

Cor-Ten® is US-Steel own brand for the patented steel developed in the 1930's. Our mother company, SSAB, produce Cor-Ten® under a European License. In the end of the production sequence of the Cor-Ten® steel, a water based protective layer is applied to the steel surface. The layer prevents oxidation during transport and temporary storing. When exposed the temporary water based protective layer dissolves naturally, if it hasn't already been wiped or washed off when the product was installed. The oxidation process of the steel surface starts shortly after the product are exposed, and when an even, smooth and natural layer has developed it will prevent further oxygen reaching the steel core. In other words, the oxidized layer are a protective layer of the steel itself, preventing further oxidation. This is one of the unique features of Cor-Ten®. When used correctly Cor-Ten® is an expressive, long-lasting and maintenance-free material. All of Ruukki's available Cor-Ten® products are designed and tested to perform reliably. They age continuously in a beautiful, safe and controlled way.

Read more:  
[www.ruukki.no](http://www.ruukki.no)



APPARTMENT BUILDING, TALLINN, ESTONIA.  
FACADE PRODUCTS: ART PERFORATED RUUKKI LIBERTA COR-TEN® 700.



# Rheinzink

---

Patinated Rheinzink has an aesthetically soft, matt surface that gives a very natural impression. The patina changes very little over time. Rheinzink is titanium alloyed zinc and the sheet is homogenous metal. Rheinzink has 3 types of a pre-patination levels that give them their hues.

Read more:  
[www.ruukki.no](http://www.ruukki.no)



GATEHOUSE BUILDING, HANHIKIVI, FINLAND.  
FACADE PRODUCTS: RUUKKI® LAMELLA VERTICAL 70 RHEINZINK.



# Aluminium composite

Aluminum composite products offer a rigid product with excellent surface flatness, which enables big individual product sizes. The aluminum composite Material consists of two aluminum facings bonded to a core. The core material is either, aluminum honeycomb or a solid core made of mixture of minerals and polymers. The exterior layer of the aluminum composite, is either color-coated in PVDF or HQPE coating, on top of a primer. The color chart is vast, with both metallic and solid colors.

Read more:  
[www.ruukki.no](http://www.ruukki.no)



QUALITY HOTEL ARLANDA XPO, STOCKHOLM, SWEDEN.  
FACADE PRODUCTS: RUUKKI® PRIMO SKYLINE.



# Aluminium

Aluminum is a lightweight material, which comes in a variety of different alloys, offering various resistant against corrosion. Our offering consist of either raw marine aluminum, color coated aluminum or powder coated aluminum and last but not least Anodized aluminum. The right choice is an ideal material for harsh climate conditions as well as for perforated façade products in outdoor conditions.

Read more:  
[www.ruukki.no](http://www.ruukki.no)



SMETANOVA SHOPPING GALLERY, VSETIN, CZECH REPUBLIC  
FACADE PRODUCTS: RUUKKI LIBERTA®



# Copper, brass & bronze

Patina forming on the wall and various pre-patina options give these solid metals a live, genuine surface for very long time spans. Copper can be pre-patinated to a variety of colours. Greenish pre-patinated colours change less than others over the years. The colour of naturally formed patina for copper, brass and bronze depends on environmental conditions, typically resulting in a dark brownish matt surface. Each alloy will attain a different hue. Nordic Royal is alloyed with aluminum and retains its "golden" colour.

Read more:  
[www.ruukki.no](http://www.ruukki.no)



OSUUSPANKKI BANK, KOUVOLA, FINLAND  
FACADE PRODUCTS: RUUKKI® DESIGN PARIS S55 COPPER



# Glass

Glass creates a high gloss and durable flat surface for the facade. Vibrant colours in different glazing sizes together with narrow and freely located joints enable almost unlimited combinations.

Read more:  
[www.ruukki.no](http://www.ruukki.no)



JÄNIKSENLINNA WATER UTILITY, TUUSULA, FINLAND  
FACADE PRODUCTS: RUUKKI LIBERTA® GLASS



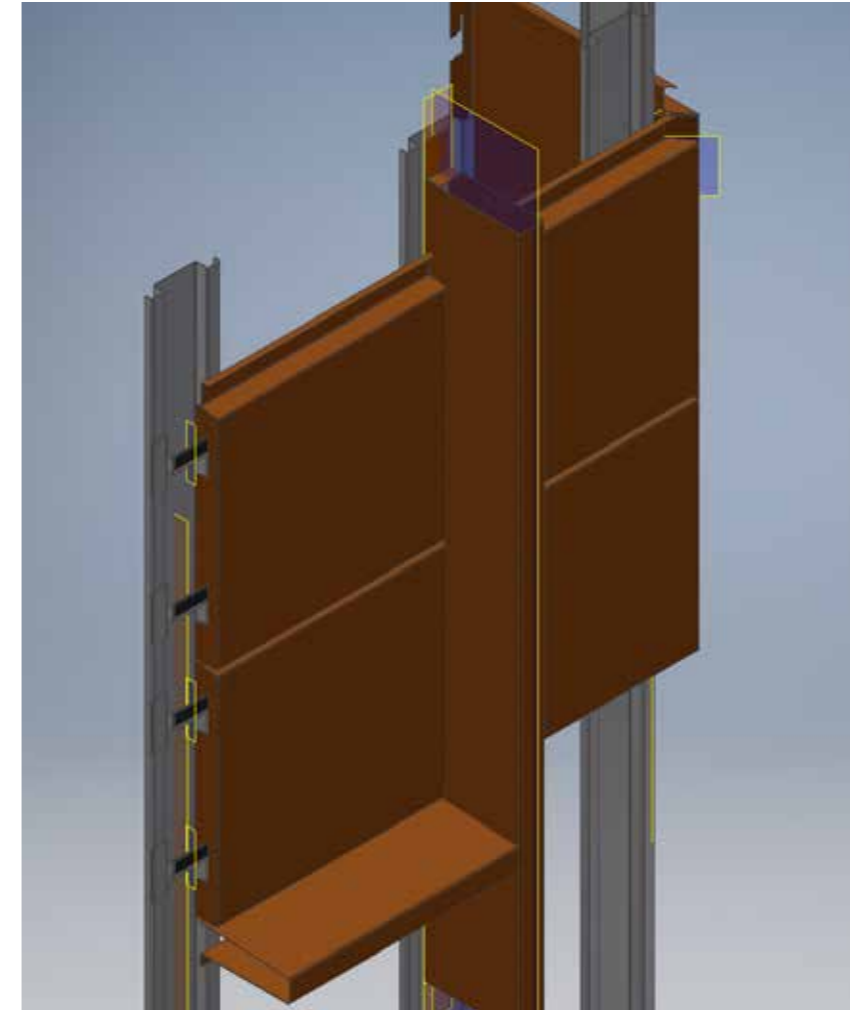
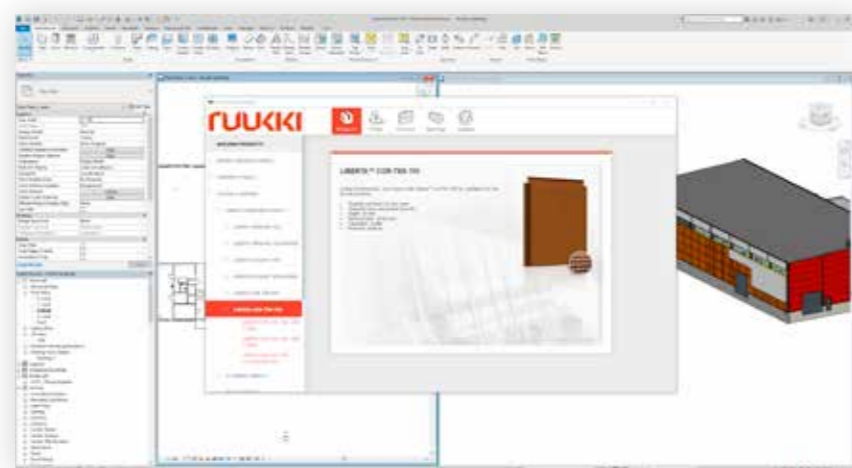
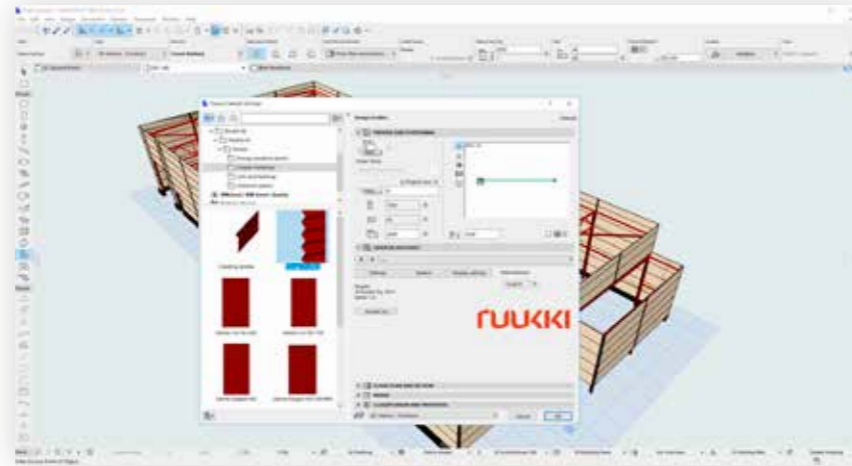
# Design tools

Go to:  
[www.ruukki.no](http://www.ruukki.no)



## BIM objects

One of the benefits of using Ruukki's established cladding products is that they come with design tools. The products have been modelled into both Revit and ArchiCAD objects. The most typical details are available for AutoCAD. Using the design tools is one way of assuring a smooth project flow.



## Design support

Ruukki's experienced designers can also help in developing project specific details, and show how interface details work between standard and bespoke details. We are available to offer support at pre-specification stage to assist in developing details and specifications that offer a degree of cost certainty from an early stage.



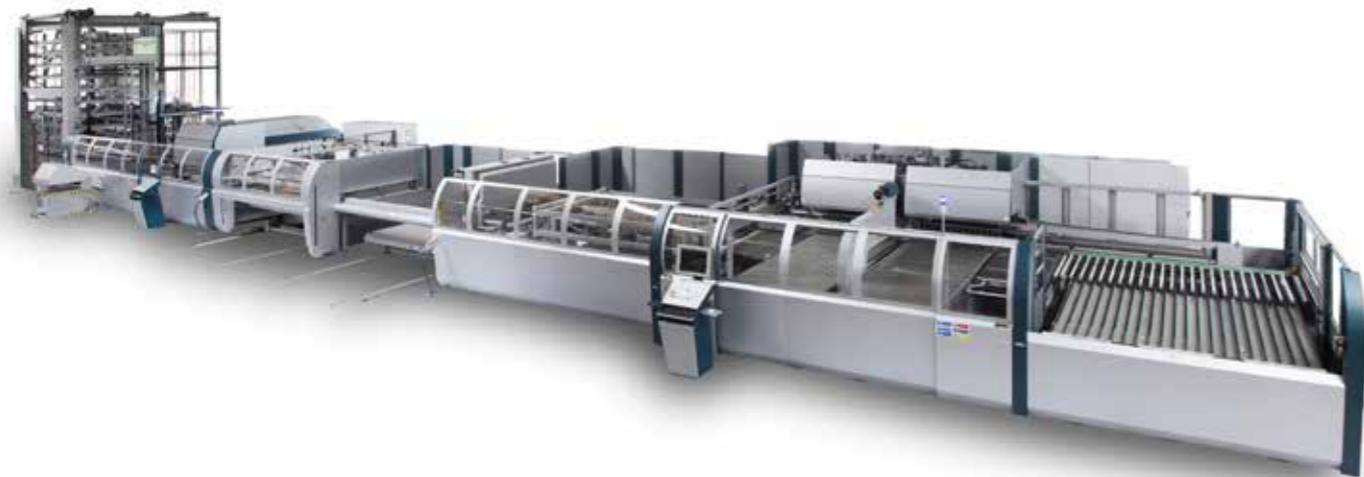
# Quality

---

Read more:  
[www.ruukki.no](http://www.ruukki.no)

The quality of a product depends on several factors. Materials and coatings has to withstand the environmental conditions. The product also has to be simple and safe to install. Last but not least, the production procedures and the workmanship of each individual part manufactured has to be perfect with low levels of tolerances.

Ruukki's products are produced with fully automated production lines to ensure consistent quality. This together with high quality materials enables us to provide up to a 50 year warranty, according to the terms and conditions in Ruukki's product warranty. All Ruukki's facade cladding products are CE-marked according to relevant EN standards.



NO.001NO/11.2021/WMSagGatIsk

**RUUKKI**

Copyright © 2019 Ruukki Construction. Med enerett. Ruukki og Ruukkis produktnavn er varemerker eller registrerte varemerker for Rautaruukki Corporation, et datterselskap av SSAB.

