



Facade claddings

Product Catalogue 2025





A FACADE THAT COMPLETES YOUR VISION

Ruukki's facade claddings offer you endless variations to use in designing your architectural objectives to your project requirements. You can use our products to find your own combination of surface structures, patterns, colours and materials. By using our carefully developed details you will gain our full technical and manufacturing knowhow to support you.

ruukki.com/facades



PRIMO™ SKYLINE RAINSCREEN PANELS
LIBERTA™ RAINSCREEN PANELS FOR FACADES
CLADDING LAMELLAS FOR FACADES
DESIGN PROFILES FOR FACADES
BESPOKE ARCHITECTURAL FACADES
FACADE SYSTEMS – RUUKKI® EMOTION
FACADE SYSTEMS – RUUKKI FORMA™
FACADE MATERIALS
FACADE MATERIALS – COR-TEN
TECHNICAL INFORMATION
DESIGN TOOLS
QUALITY
CONTACT DETAILS

*Hydroscand Tartu office, Estonia. Ruukki facade products:
Liberta Elegant 500, Liberta Elegant 500 Grande,
Design Tokyo S18, Sandwich panels for external walls.*

NEW RUUKKI® PRIMO CLADDING SYSTEM

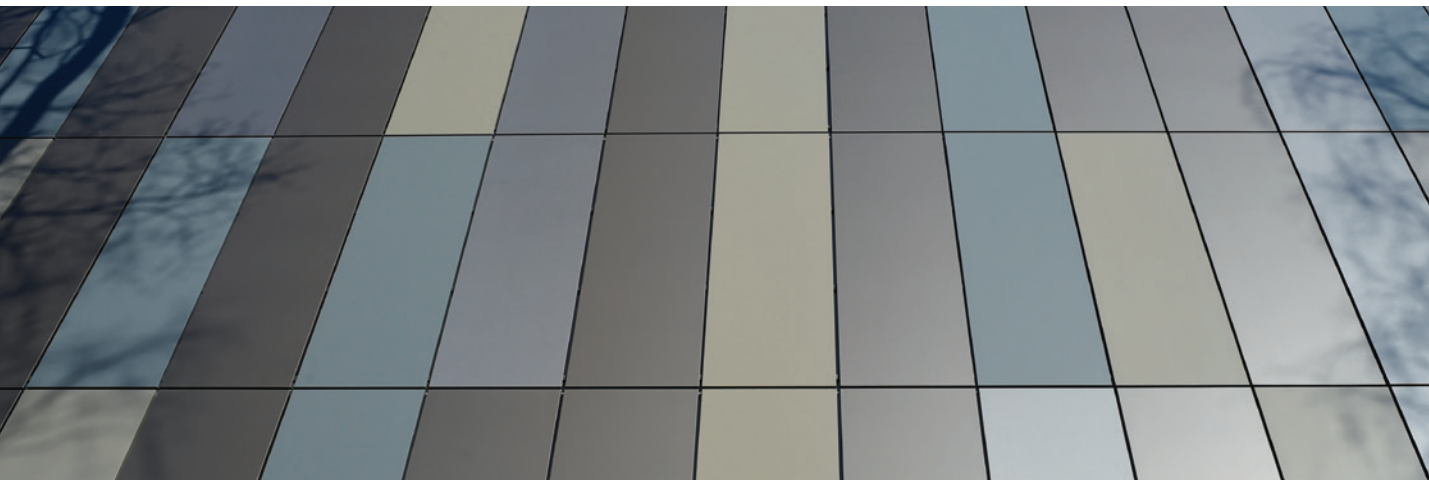
www.ruukki.com/primo

*Kverneland Bil – Car dealer in Haugesund, Norway.
Ruukki facade products: Ruukki® Primo Skyline 100.*

RUUKKI® PRIMO is Ruukki's new premium cladding system with unique design features

- Big flat surfaces enable high-end design solutions
- Tilted joints with continuously adjustable joint widths continuously adjustable joint widths
- Individually replaceable panels
- Clear and sophisticated portfolio
- Extensive design and technical support
- Trusted processes and market-wide expertise

RUUKKI® PRIMO rainscreen panels come in an extensive selection of finishes and colours.



Primo Skyline 150

LAND ROVER



LIBERTA™ RAINSCREEN PANELS FOR FACADES

www.ruukki.com/libertapanel

*Fastmall shopping center in Příbram, Czech Republic.
Ruukki facade products: Ruukki Liberta Elegant.*

Liberta™ rainscreen panels are folded on all sides to offer maximum rigidity for solid metal cassettes with concealed, recessed or visible fixing solutions.

The panel system provides easy and quick installation for a fully finished facade, complete with accessories designed and manufactured to maintain accurate and project-specific dimensions. The panels come in an extensive selection of materials, finishes and colours.



*Bárczy Environmental Protection Ltd., Office facilities, Hungary
Ruukki facade products: Liberta Elegant 500 Grande*





*Particle board factory in Akmenė, Lithuania.
Ruukki facade products: Lamella Sharp 45.*

CLADDING LAMELLAS FOR FACADES

www.ruukki.com/lamellas



Cladding lamellas are narrower profiles that are folded along two long edges and divide facade surfaces one-directionally, be it vertically, horizontally or at an angle. Variety of shapes in the long edge detail together with hidden and concealed fixings allow you to accentuate the surface division to just the right amount. The lamellas have their own, wide selection of materials, finishes and colours.

*Pontoon – a modern naval architecture on the Danube, Slovakia.
Ruukki facade products: Cladding Lamella Cor-Ten 30.*



DESIGN PROFILES FOR FACADES

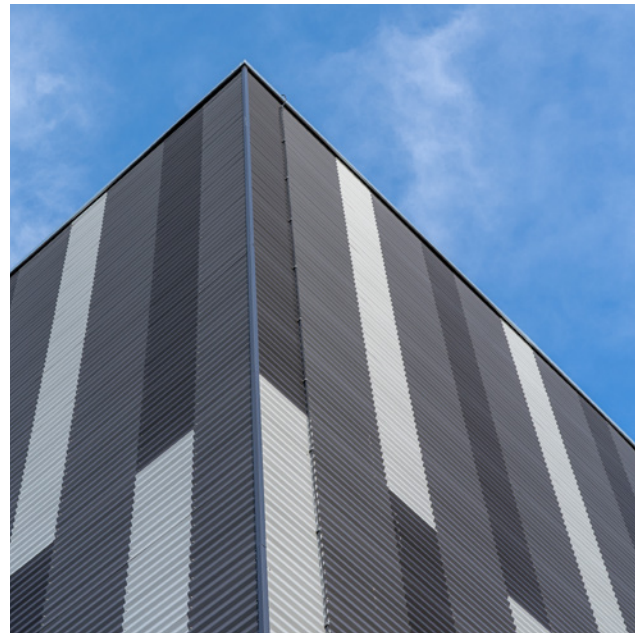
www.ruukki.com/profiles

Design profiles create a continuous, structured facade surface. With options for both profile and material, the scale and attenuation of the surface structure can be matched to meet the architectural needs of the facade in question. The Design Profiles system allows for easy and quick installation of a fully finished facade complete with flashings and accessories that match the facade material finish.



*WURTH Center in Turku, Finland.
Ruukki facade products: Design Tokyo S18*

*RIMI - a logistics centre in Latvia.
Ruukki facade products: Design Tokyo S18*







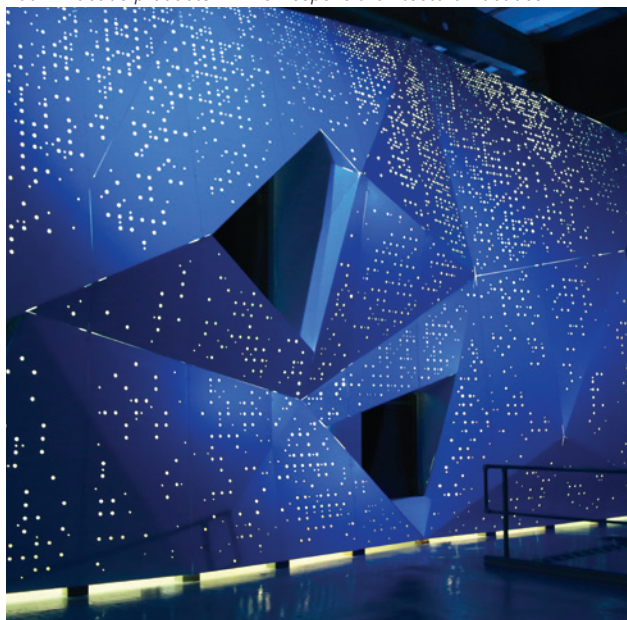
BESPOKE ARCHITECTURAL FACADES

www.ruukki.com/bespoke

On large projects, which are outside the possibilities of our standard products, the cladding solution can be designed in co-operation to meet the needs of that specific project. Our technical experts will work together with the project architect to ensure architectonic, technical and economic feasibility from early design to building use. The final solution will be just as reliable as tried and tested product solutions.

The LUMI data center in Kajaani, Finland.

Ruukki facade products: Primo Bespoke architectural facades.



Film Museum, Tallinn, Estonia.

Ruukki facade products: Bespoke architectural facades, Special Cor-Ten Lamellas.

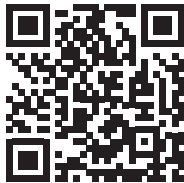




*Balticovo office and factory building, Latvia.
Ruukki facade products: Ruukki Emotion – Ruukki Liberta® Original 102.*

FACADE SYSTEMS RUUKKI® EMOTION

www.ruukki.com/ruukkiemotion



Many of the facade claddings Ruukki has to offer can be perforated in several ways. By perforating design profiles fully their transparency can be adjusted when viewed from a distance. Cassettes and lamellas can be perforated with either evenly or non-evenly distributed holes. The size and distance can be chosen by the customer according to perforation portfolio. They can also be perforated freely to form a picture or a pattern. Ruukki can pixelate any picture to a hole map on actual products. The perforated facades can be backlit by either Ruukki's LED purlins for a flat structure or by other lights.



*Smetanova shopping gallery Vsetín in Czech republic.
Ruukki facade products: Ruukki Emotion – Ruukki Liberta® Original 102.*



FACADE SYSTEMS RUUKKI FORMA™

www.ruukki.com/ruukkiforma

Ruukki Forma™ is a complete exterior wall system, combining our facade cladding products with the Ruukki® energy panel system. Ruukki Forma™ provides a wide range of aesthetic shape, material and colour options for the simple and efficient sandwich panel exterior walls. High airtightness of the base structure – the Ruukki® energy panel system – can generate up to 30% savings in a building's energy costs, and improve its energy class.

The base structure is also available in the highly sustainable Ruukki Life energy panel version, with approximately 80% recycled material content.



*Fastmall shopping center in Příbram, Czech Republic.
Ruukki facade products: complete Ruukki Forma® wall system.*



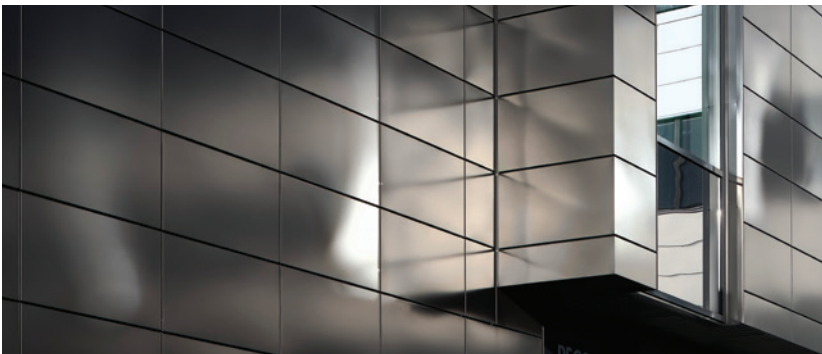
FACADE MATERIALS

www.ruukki.com/materials

Our products offer quality, predictability and reliability in endless combinations of shapes, colours and materials. They offer an extremely powerful and wide aesthetical range for use as architectural elements. Their technical properties of product and material combinations are equally versatile, which is why our local experts are ready to help architects and developers in identifying good solutions to meet individual projects' aesthetic, technical and economic conditions.



**COLOUR-COATED STEEL
AND ALUMINIUM**



STAINLESS STEEL

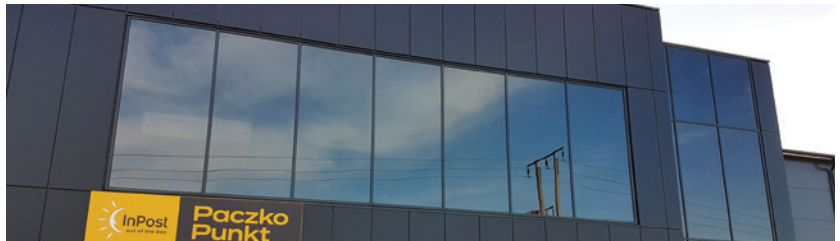
RHEINZINK



BRUSHED ALUMINIUM



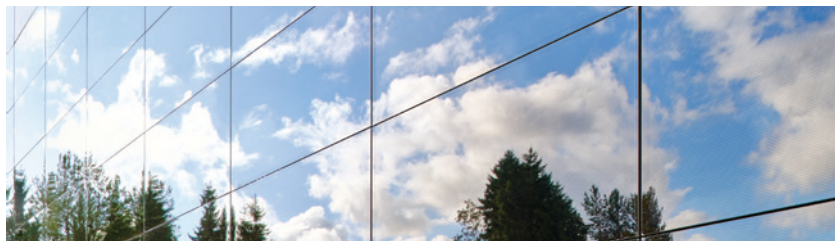
ALUMINIUM COMPOSITE



COPPER, BRASS AND BRONZE



GLASS



FACADE MATERIALS COR-TEN

www.ruukki.com/materials

Cor-Ten is almost pure steel that, in the right conditions, forms a natural, rugged, protective patina. Using Cor-Ten as a face material requires specific structural and chemical know-how. When used correctly Cor-Ten is expressive, long-lasting and maintenance-free material. All of Ruukki's available Cor-ten products are designed and tested to perform reliably. They age continuously in a beautiful, safe and controlled way.



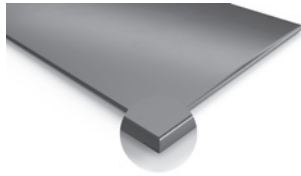
*Tallinn Airport parking station, Tallinn, Estonia.
Ruukki facade products: Special Cor-Ten lamellas.*

*ViaJur Wine Shop in Svätý Jur, Slovakia.
Ruukki facade products: Liberta Cor-Ten 700*





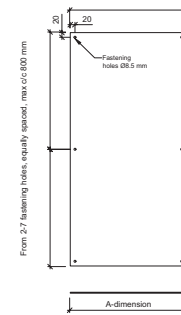
PRIMO SKYLINE FACADE SYSTEM



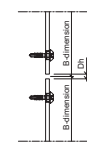
PRIMO PLANA 10

| | |
|-----------------|---------------------|
| Installation | Horizontal/Vertical |
| Max width | 1490 mm |
| Max Height | 4990 mm |
| Joint width | 5 - 20 mm |
| Fastening style | Visible |
| Materials | Aluminium composite |

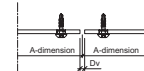
From 2-7 fastening holes, equally spaced, max c/c 800 mm



Horizontal joint



Vertical joint

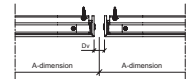
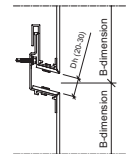
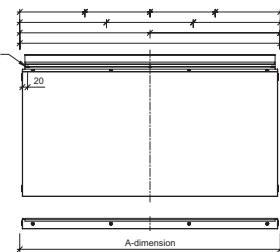


PRIMO SKYLINE 100

| | |
|-----------------|---------------------|
| Installation | Horizontal |
| Max width | 4000 mm |
| Max Height | 1000 mm |
| Joint width | 5 - 35 mm |
| Fastening style | Hidden fix |
| Materials | Aluminium composite |

From 2-7 fastening holes, equally spaced, max c/c 700 mm

Oval fastening holes 5x10 mm

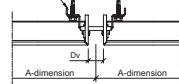
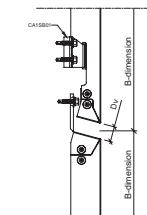
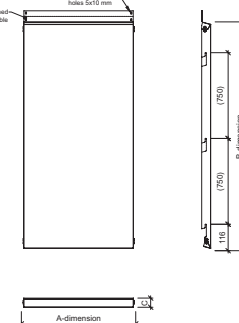


PRIMO SKYLINE 150

| | |
|-----------------|---------------------|
| Installation | Vertical |
| Max width | 1400 mm |
| Max Height | 4000 mm |
| Joint width | 5 - 35 mm |
| Fastening style | Hidden fix |
| Materials | Aluminium composite |

Upper flange shortened if panel type not suitable

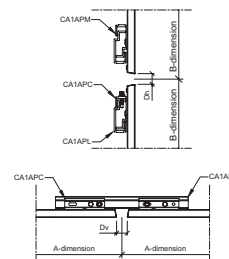
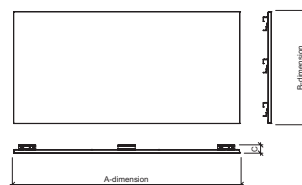
Oval fastening holes 5x10 mm





PRIMO SKYLINE 1000

| | |
|-----------------|---------------------|
| Installation | Horizontal/Vertical |
| Max size | 6200 x 1900 mm |
| Joint width | ≥ 5 mm |
| Fastening style | Hidden fix |
| Materials | Aluminum honeycomb |



STANDARD COLORS, PRIMO SKYLINE

| | | | | | |
|---------------------------|--------------------------------|-------------------------------|-----------------------------|---------------------------|-----------------------------|
| | | | | | |
| PRIMO BRONZE METALLIC | PRIMO CHAMPAGNE METALLIC | PRIMO COPPER METALLIC | PRIMO DARK GREY METALLIC | PRIMO GREY METALLIC | PRIMO MANGANESE METALLIC |
| | | | | | |
| PRIMO WHITE METALLIC | PRIMO SILVER METALLIC | PRIMO SMOKE METALLIC | PRIMO SIGNAL YELLOW 1003 | PRIMO PURE ORANGE 2004 | PRIMO PURPLE RED 3004 |
| | | | | | |
| PRIMO TRAFFIC RED 3020 | PRIMO ULTRAMARINE BLUE 5002 | PRIMO ANTHRACITE GREY 7016 | PRIMO UMBRA GREY 7022 | PRIMO LIGHT GREY 7035 | PRIMO GREY BROWN 8019 |
| | | | | | |
| PRIMO JET BLACK 9005 | PRIMO PURE WHITE 9010 | | | | |

PVDF 3L – Metallic White, Dark Grey Metallic, Traffic Red 3020

PVDF 2L – Pure White 9010, Copper Metallic, Bronze Metallic, Light Grey 7035, Grey Metallic, Anthracite Grey 7016, Umbra Grey 7022, Silver Metallic, Smoke Metallic, Champagne Metallic, Manganese Metallic, Jet Black 9005, Grey Brown 8019, Purple Red 3004, Signal Yellow 1003, Ultramarine Blue 5002

HQPE – Pure Orange 2004

Also other coating types are available upon request (non-stock material).
Minimum order size: 125 m² (standard colours)

LIBERTA RAINSCREEN PANEL

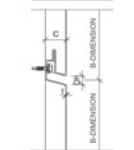


LIBERTA ELEGANT 500

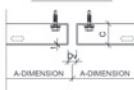
| | |
|------------------------|---|
| Installation direction | Horizontal |
| Width | 100 – 3800 mm |
| Height | 100 – 900 mm |
| Depth | 25, 30 mm |
| Horizontal joint | 5, 10, 15, 20, 25, 30 mm |
| Vertical joint | 5, 10, 15, 20, 25, 30 mm |
| Fastening style | concealed |
| Materials | Steel, Aluminium, Rheinzink, Copper, Brass, Bronze, Stainless steel |



HORIZONTAL JOINT



VERTICAL JOINT

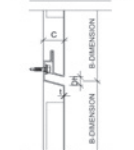


LIBERTA ELEGANT 500 GRANDE

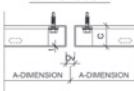
| | |
|------------------------|--------------------------|
| Installation direction | Horizontal |
| Width | 100 – 3350 mm |
| Height | 100 – 1000 mm |
| Depth | 25, 30 mm |
| Horizontal joint | 5, 10, 15, 20, 25, 30 mm |
| Vertical joint | 5, 10, 15, 20, 25, 30 mm |
| Fastening style | concealed |
| Materials | Steel |



HORIZONTAL JOINT

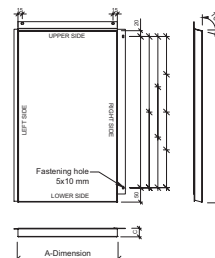


VERTICAL JOINT

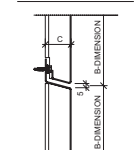


LIBERTA ELEGANT 550

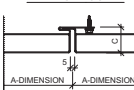
| | |
|------------------------|---|
| Installation direction | Vertical |
| Width | 150 – 1000 mm |
| Height | 150 – 3800 mm |
| Depth | 25, 30 mm |
| Horizontal joint | 5 mm |
| Vertical joint | 5 mm |
| Fastening style | concealed |
| Materials | Steel, Aluminium, Rheinzink, Copper, Brass, Bronze, Stainless steel |



HORIZONTAL JOINT



VERTICAL JOINT

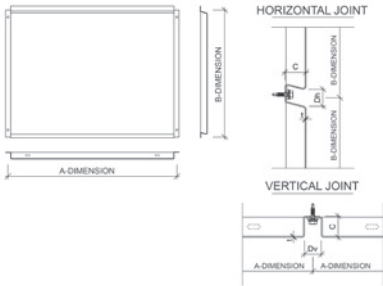


LIBERTA RAINSCREEN PANEL



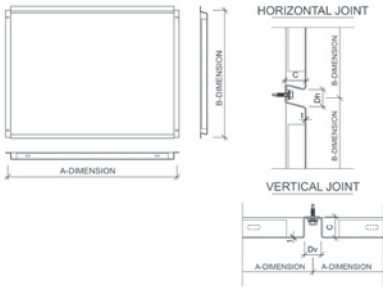
LIBERTA ORIGINAL 102

| | |
|------------------------|---|
| Installation direction | Horizontal/Vertical |
| Max size | 3800 x 800 mm |
| Min size | 100 x 100 mm |
| Depth | 20, 25, 30 mm |
| Horizontal joint | 20, 25, 30 mm |
| Vertical joint | 20, 25, 30 mm |
| Fastening style | visible |
| Materials | Steel, Aluminium, Rheinzink, Copper, Brass, Bronze, Stainless steel |



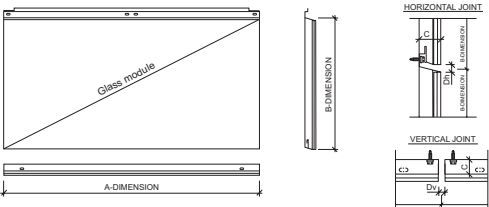
LIBERTA ORIGINAL 102 GRANDE

| | |
|------------------------|---------------------|
| Installation direction | Horizontal/Vertical |
| Max size | 3350 x 1000 mm |
| Min size | 100 x 100 mm |
| Depth | 25, 30 mm |
| Horizontal joint | 20, 25, 30 mm |
| Vertical joint | 20, 25, 30 mm |
| Fastening style | visible |
| Materials | Steel |



LIBERTA GLASS

| | |
|------------------------|--|
| Installation direction | Horizontal |
| Width | 240 – 1198 mm |
| Height | 275 – 798 mm |
| Depth | 39 mm |
| Horizontal joint | 8 mm |
| Vertical joint | 8 mm |
| Fastening style | concealed |
| Materials | Panel frame – steel, Glass module – tempered glass |

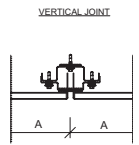
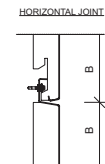
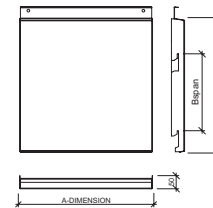


LIBERTA RAINSCREEN PANEL



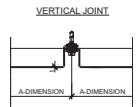
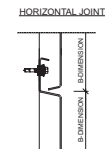
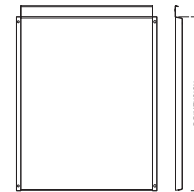
LIBERTA COR-TEN 800

| | |
|------------------------|-------------------------|
| Installation direction | Vertical |
| Width | 200 – 1150 mm |
| Height | 200 – 3800 mm |
| Depth | 40 mm |
| Horizontal joint | 10 mm |
| Vertical joint | 10 mm |
| Fastening style | concealed |
| Materials | Steel Cor-Ten A, 1.5 mm |



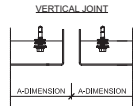
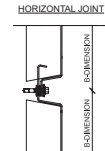
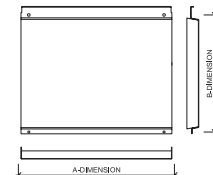
LIBERTA COR-TEN 700

| | |
|------------------------|-------------------------|
| Installation direction | Vertical |
| Width | 100 – 1150 mm |
| Height | 100 – 3800 mm |
| Depth | 30 mm |
| Horizontal joint | 10 mm |
| Vertical joint | 20, 25, 30 mm |
| Fastening style | visible |
| Materials | Steel Cor-Ten A, 1.5 mm |



LIBERTA COR-TEN 600

| | |
|------------------------|-------------------------|
| Installation direction | Horizontal |
| Width | 100 – 3800 mm |
| Height | 100 – 1150 mm |
| Depth | 30 mm |
| Horizontal joint | 34 mm |
| Vertical joint | 10, 15, 20, 25, 30 mm |
| Fastening style | visible |
| Materials | Steel Cor-Ten A, 1.5 mm |

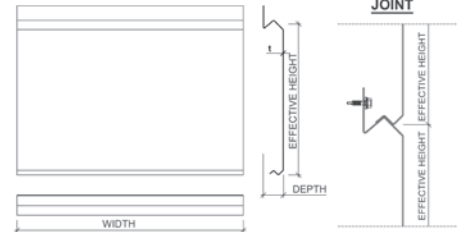


CLADDING LAMELLA



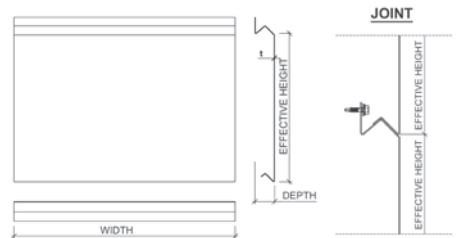
CLADDING LAMELLA GROOVE 10

| | |
|------------------------|---|
| Installation direction | Horizontal/Vertical |
| Depth | 40 mm |
| Effective height | Standard 300 mm (150...300 mm) |
| Width | 150 - 4000 mm |
| Fastening style | concealed |
| Materials | Steel, Aluminium, Rheinzink, Copper, Brass, Bronze, Stainless steel |



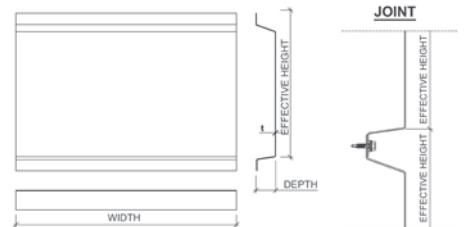
CLADDING LAMELLA GROOVE 20

| | |
|------------------------|---|
| Installation direction | Horizontal/Vertical |
| Depth | 40 mm |
| Effective height | Standard 300 mm (150...300 mm) |
| Width | 150 - 4000 mm |
| Fastening style | concealed |
| Materials | Steel, Aluminium, Rheinzink, Copper, Brass, Bronze, Stainless steel |



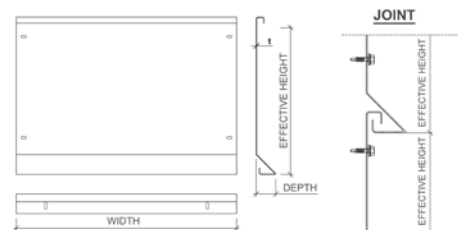
CLADDING LAMELLA GROOVE 30

| | |
|------------------------|-----------------------------------|
| Installation direction | Horizontal/Vertical |
| Depth | 40 mm |
| Effective height | Standard 300 mm (150...300 mm) |
| Width | 150 - 4000 mm |
| Fastening style | visible |
| Materials | Steel 1.2 mm, Aluminium 1.5 mm |



CLADDING LAMELLA SHARP 40

| | |
|------------------------|-----------------------------------|
| Installation direction | Horizontal |
| Depth | 40 mm |
| Effective height | Standard 300 mm (150...300 mm) |
| Width | 150 - 3800 mm |
| Fastening style | visible |
| Materials | Steel 1.2 mm, Aluminium 1.5 mm |

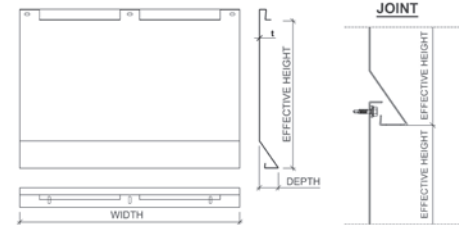


CLADDING LAMELLA



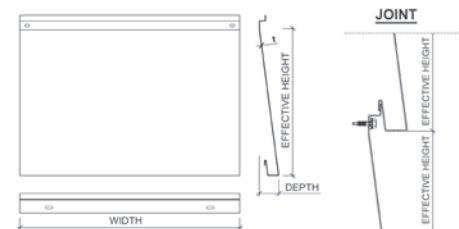
CLADDING LAMELLA SHARP 45

| | |
|------------------|-----------------------------------|
| Depth | 40 mm |
| Effective height | Standard 300 (300...350) mm |
| Width | 150 - 3800 mm |
| Fastening style | concealed |
| Materials | Steel 1.2 mm, Aluminium 1.5 mm |



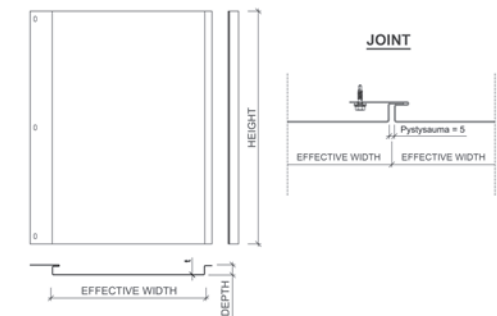
CLADDING LAMELLA LAP 60

| | |
|------------------|---|
| Depth | 40 mm |
| Effective height | 300 mm |
| Width | 150 - 3800 mm |
| Fastening style | concealed |
| Materials | Steel, Aluminium, Rheinzink, Copper, Brass, Bronze, Stainless steel |



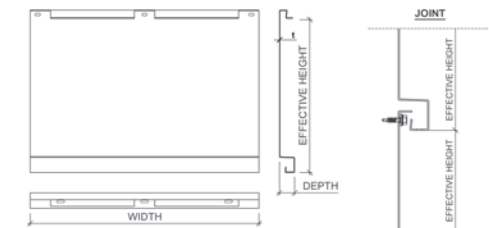
CLADDING LAMELLA VERTICAL 70

| | |
|------------------|---|
| Depth | 20 mm |
| Effective height | Standard 300 (250...500) mm |
| Width | 150 - 3800 mm |
| Fastening style | concealed |
| Materials | Steel, Aluminium, Rheinzink, Copper, Brass, Bronze, Stainless steel |



CLADDING LAMELLA STRAIGHT 100

| | |
|------------------|-----------------------------------|
| Depth | 30 mm |
| Effective height | Standard 300 (300 - 350) mm |
| Width | 150 - 3800 mm |
| Fastening style | concealed |
| Materials | Steel 1.2 mm, Aluminium 1.5 mm |

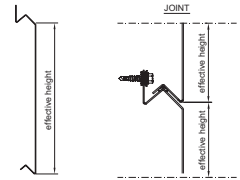
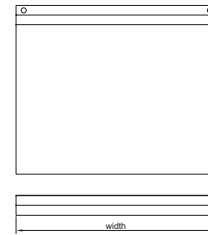


CLADDING LAMELLA



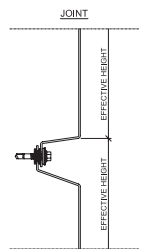
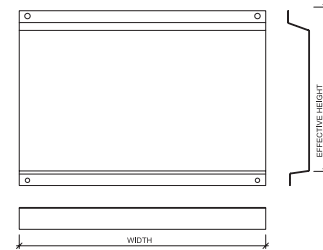
CLADDING LAMELLA COR-TEN 20

| | |
|------------------------|-----------------------------|
| Installation direction | Horizontal/Vertical |
| Depth | 40 mm |
| Effective height | Standard 300 (150 - 600) mm |
| Width | 150 - 3800 mm |
| Fastening style | concealed |
| Materials | Steel Cor-Ten A, 1.5 mm |



CLADDING LAMELLA COR-TEN 30

| | |
|------------------------|-----------------------------|
| Installation direction | Horizontal/Vertical |
| Depth | 40 mm |
| Effective height | Standard 300 (150 - 600) mm |
| Width | 150 - 3800 mm |
| Fastening style | visible |
| Materials | Steel Cor-Ten A, 1.5 mm |



COATING AND COLORS, LIBERTA & LAMELLA

Greencoat Pural BT (standard colours)

Gloss level: 20 GU (non-metallic) / 40 GU (metallic)

| | | | |
|--|---|--|--|
|  RR20 WINTER WHITE |  RR21 PEBBLE GREY |  RR23 MOUNTAIN GREY |  RR33 NORDIC NIGHT BLACK |
|  RR40 METALLIC SILVER |  RR41 METALLIC DARK SILVER |  RR42 METALLIC GOLD |  RR979 METALLIC COPPER |

Extended colours for Pural BT, Powder paint in RAL and NCS available on request.

DESIGN PROFILES

DESIGN VENICE S10

| | |
|------------------------|--|
| Installation direction | Horizontal/Vertical |
| Depth | 10 mm |
| Effective width | 998 mm |
| Maximum length | 7000 mm |
| Minimum length | 500 mm |
| Materials | Steel 0.6mm, Aluminium 0.7 mm Cor-Ten 0.7 mm |



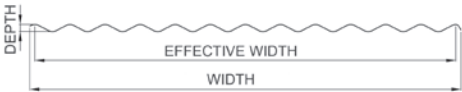
DESIGN OULU T10A

| | |
|------------------------|-----------------------------------|
| Installation direction | Horizontal/Vertical |
| Depth | 10 mm |
| Effective width | 980 mm |
| Maximum length | 3130 mm |
| Minimum length | 200 mm |
| Materials | Steel 0.6 mm, Aluminium 0.7 mm |

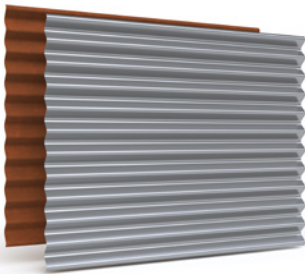


DESIGN TOKYO S18

| | |
|------------------------|--|
| Installation direction | Horizontal/Vertical |
| Depth | 18 mm |
| Effective width | 1100 mm |
| Maximum length | 9000 mm |
| Minimum length | 600 mm |
| Materials | Steel 0.6mm, Aluminium 0.7 mm Cor-Ten 0.7 mm |

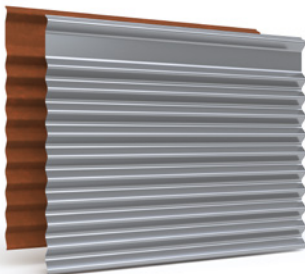


DESIGN PROFILES



DESIGN ROME S34

| | |
|------------------------|--|
| Installation direction | Horizontal/Vertical |
| Depth | 34 mm |
| Effective width | 898 mm |
| Maximum length | 7000 mm |
| Minimum length | 500 mm |
| Materials | Steel 0.6mm, Aluminium 0.7 mm Cor-Ten 0.7 mm |



DESIGN ROME S S34

| | |
|------------------------|--|
| Installation direction | Horizontal/Vertical |
| Depth | 34 mm |
| Effective width | 898 mm |
| Maximum length | 7000 mm |
| Minimum length | 500 mm |
| Materials | Steel 0.6mm, Aluminium 0.7 mm Cor-Ten 0.7 mm |



COATING AND COLORS, DESIGN PROFILES

Greencoat Pural BT (standard colours)

Gloss level: 20 GU (non-metallic) / 40 GU (metallic)

| | | | |
|---|---|---|---|
|  |  |  |  |
| RR20 WINTER WHITE | RR21 PEBBLE GREY | RR23 MOUNTAIN GREY | RR33 NORDIC NIGHT BLACK |
|  |  |  |  |
| RR40 METALLIC SILVER | RR41 METALLIC DARK SILVER | RR42 METALLIC GOLD | RR979 METALLIC COPPER |

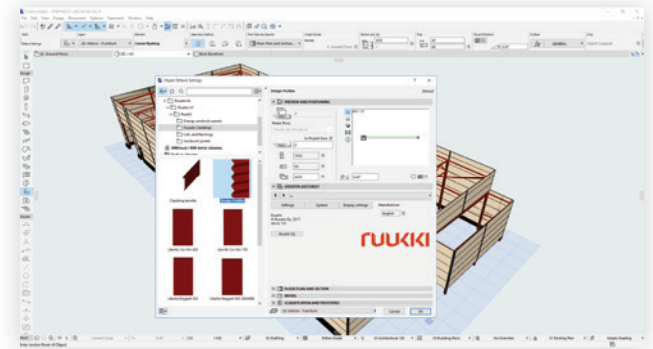
Extended colours for Pural BT, Powder paint in RAL and NCS available on request.

DESIGN TOOLS

www.ruukki.com/tools

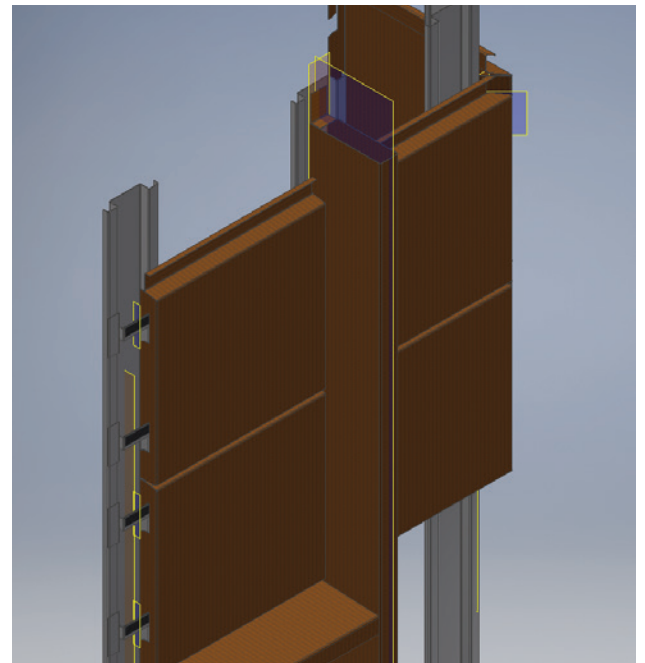
Download **BIM OBJECTS** to your desktop

ProdLib brings Ruukki products as BIM models directly to your desktop in 3D form for design programs AutoCAD, Autodesk Revit, Archicad and Tekla Structures. Product libraries compile all necessary design models and detailed drawings in one place. Library updates are automatically notified, so as a user you can be sure that your product information is constantly up to date. ProdLib can also be used as a standalone desktop application.



DESIGN SUPPORT

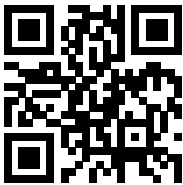
Ruukki's experienced designers can also help in developing project specific details, and show how interface details work between standard and bespoke details. We are available to offer support at pre-specification stage to assist in developing details and specifications that offer a degree of cost certainty from an early stage.



VISUALIZATION TOOL PAGE

YOUR VISION IS OUR PURPOSE

Get inspired on how our façade cladding products come live in a building façade. Find your own combination of surface structures, patterns, colors and materials.

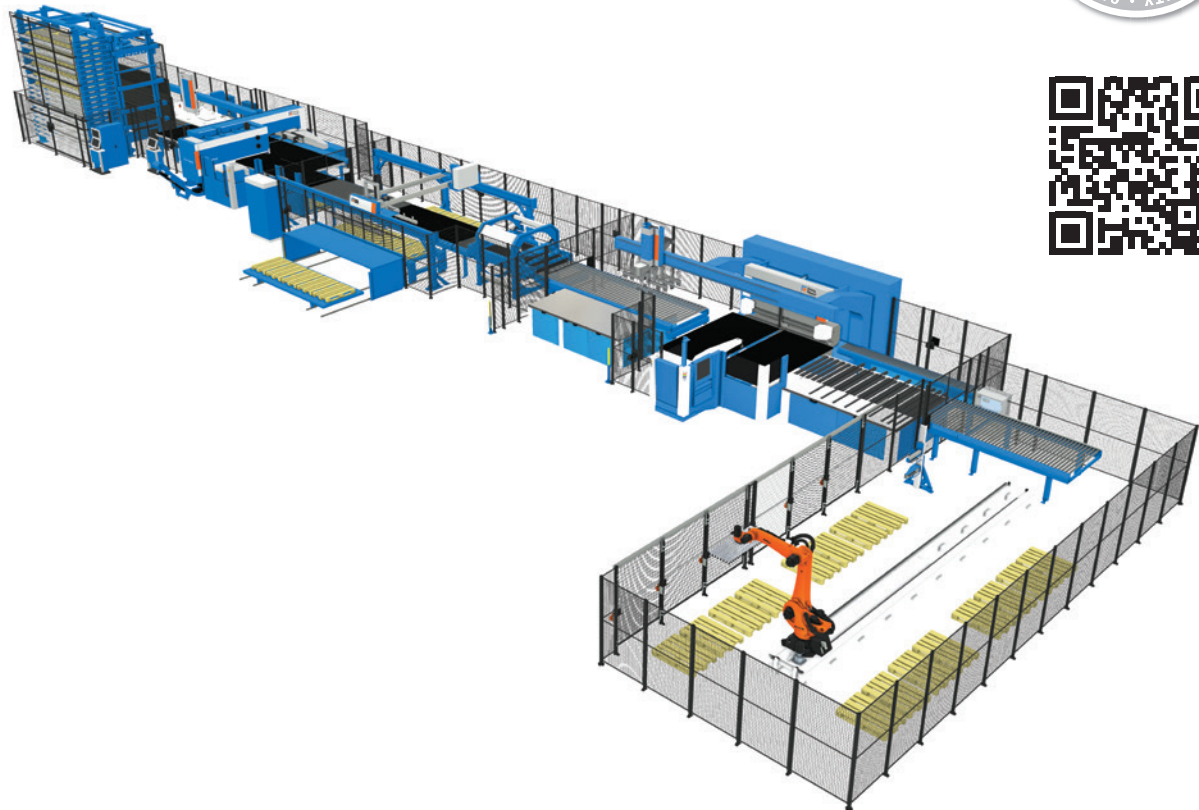
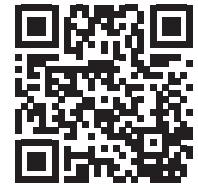


QUALITY

www.ruukki.com/quality

The quality of a facade cladding depends on several factors. Coatings and materials have to be able to withstand the UV and chemical strains. Components have to be simple and safe to install at height. And of course the workmanship of each individual part manufactured has to be perfect.

Ruukki's products are produced with fully automated production lines to ensure consistent quality. This together with high quality materials enables us to provide up to a 50 year warranty. All Ruukki's facade cladding products are CE-marked according to relevant EN standards.



CONTACT DETAILS



ESTONIA

Andrus Hallimäe

+372 5118 665 / andrus.hallimae@ruukki.com



LATVIA

Jānis Zaharāns

+371 293 89 824 / janis.zaharans@ruukki.com



LITHUANIA

Haroldas Bacias

+370 615 95925 / haroldas.bacias@ruukki.com



EXPORT

Kaidu Kaup

+372 529 5831 / kaidu.kaup@ruukki.com

We make steel-based products for walls and roofs, for both commercial buildings and private homes. We're a supplier of high-quality products, systems and solutions, developed sustainably and to live up to the highest demands on durability in harsh conditions.

This publication is accurate to the best of our knowledge and understanding. Although every effort has been made to ensure accuracy, the company does not assume any responsibility for any errors or omissions, or any direct, indirect or consequential damage caused by incorrect application of the information. We reserve the right to make changes. Always use original standards for accurate comparison. For latest technical updates, please visit **www.ruukki.com**



**Estonia: Ruukki Products AS,
Turba 7, 80010, Pärnu, tel. 1914**

**Latvia: Ruukki Products AS Latvian branch, Ābelīšu iela 2,
Mārupe, Mārupes novads, LV-2167, Latvia, tel. +371 67044950**

**Lithuania: Ruukki Products AS,
Pramonės g. 16, Vaidotai, 14149 Vilniaus raj., tel. +370 5 2322314**

Copyright© 2025 Ruukki Construction. All rights reserved.
Ruukki and Ruukki's product names are trademarks or registered trademarks of Rautaruukki Corporation,
a subsidiary of SSAB.

