

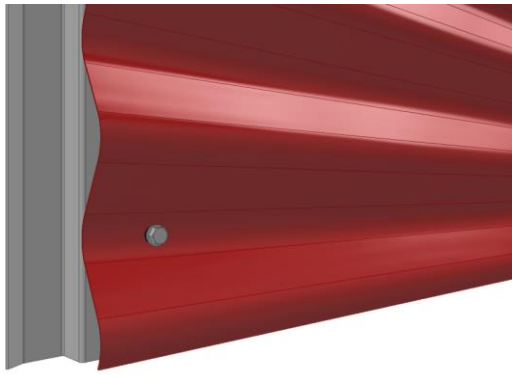
## INSTRUCTIONS FOR FASTENING OF THE PROFILE AND FOLLOW-UP OF THE DIMENSIONS

### FACADE CLADDINGS / DESIGN PROFILES DESIGN TOKYO S18

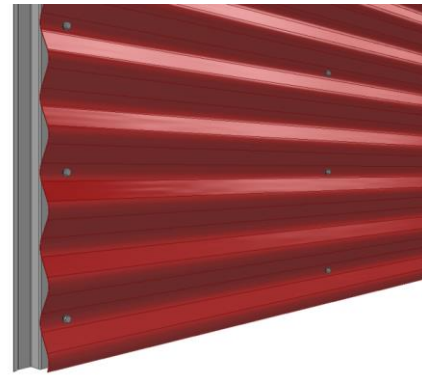
# RUUKKI

#### FASTENING OF THE PROFILE

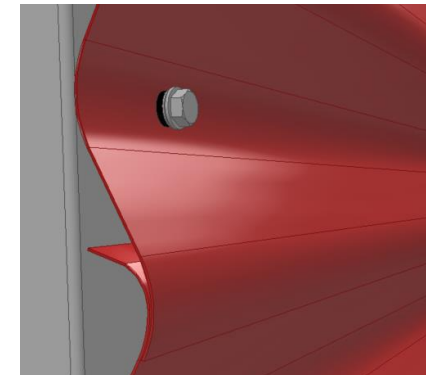
Minimum fastening to each support stud:



1. Add fasteners to the lowest wave bottom



2. Add fasteners to every second wave bottom



3. At the overlapping add fasteners to the lowest wave bottom

If necessary, add additional fasteners to any loose edge.

Recommended fasteners:

- For fastening to support stud (e.g. CA1SS1), use screws S3H48022D02S4C or S3R48022D02A0B
- For fastening to timber, use screws S3T4826PA0E

Recommended spacing between support studs: c/c 600 - 900 mm

**Final execution must be according to the structural designer's instructions!**

#### FOLLOW-UP THE DIMENSIONS

Follow the effective width. Effective width is 1100 mm.

Check the dimensions from the plans!

Profile tolerances:

- Effective width  $\pm 5$
- Length +10, -5 mm

Sub frame tolerances in horizontal direction:

- For one profile:  $\pm 1$  mm ( $L \leq 3000$  mm) or  $\pm 2$  mm ( $L > 3000$  mm)
- Between each support stud:  $\pm 1$  mm

Overlapping at profile ends ~100 mm or use vertical joint flashings in between.

