
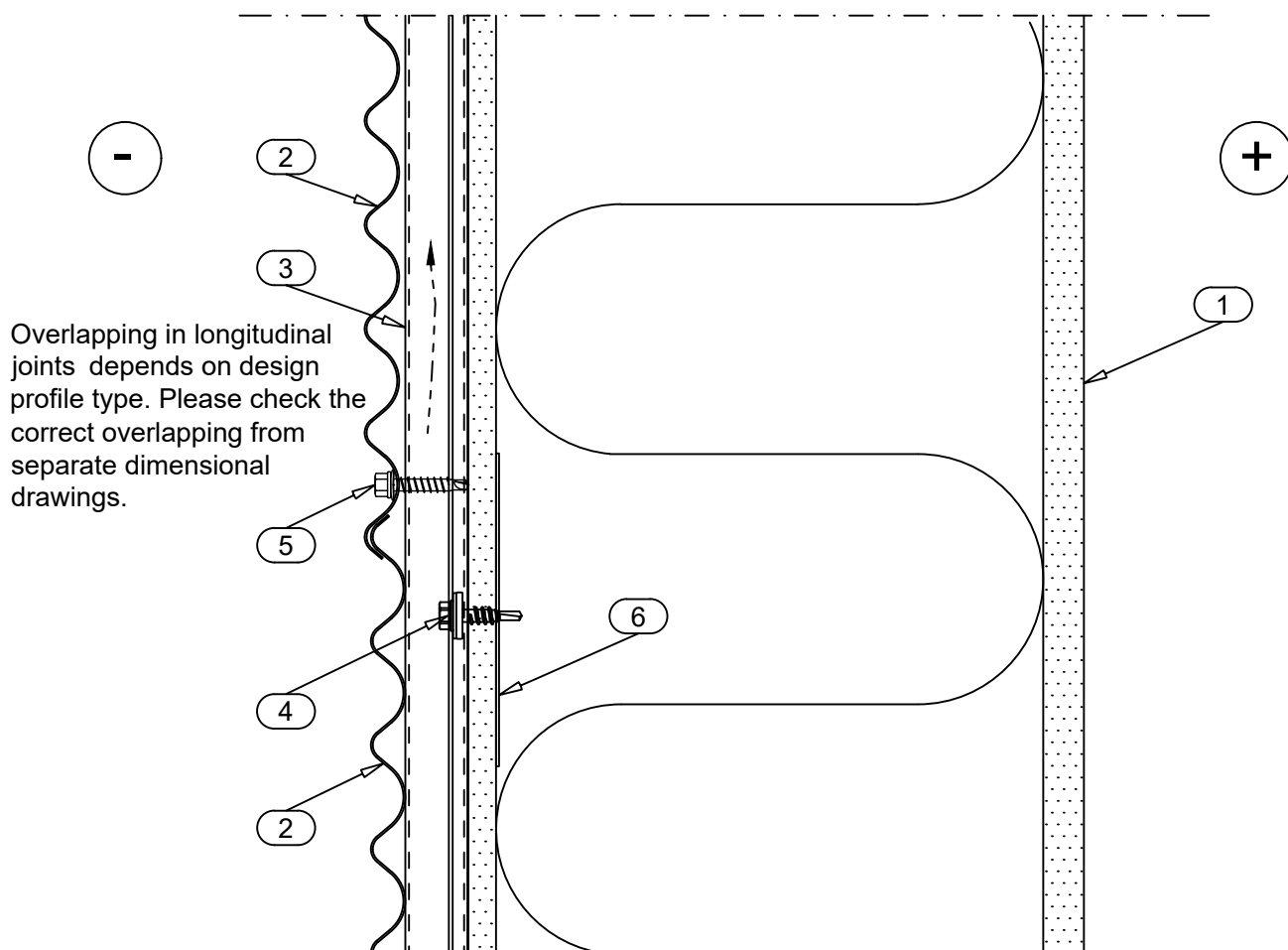


Drw. nr.	Contents of drawing			Date	Rev.	Rev. date
DPDE-1	Background structure type: Prefabricated external wall element			04.10.2011	B	08.07.2019
DPDE-2	Background structure type: Sandwich panel			04.10.2011	B	08.07.2019
DPDE-3	Background structure type: Liner tray			04.10.2011	B	08.07.2019
DPDE-4	Background structure type: Concrete			04.10.2011	B	08.07.2019
DPDE-5	Background structure type: Timber			04.10.2011	B	08.07.2019
City sector		Block	Site/Reg. nr.	File nr.		
Building type				Drawing type Nr.		
Building, Name and address				Contents of drawing		Scale
				Design Profiles DETAIL DRAWINGS DIFFERENT BACKGROUND STRUCTURE TYPES		
Date 04.10.2011		Designer Ruukki		Work nr.	Work nr.	Drw. nr. Rev.
Drawn by		Checked				

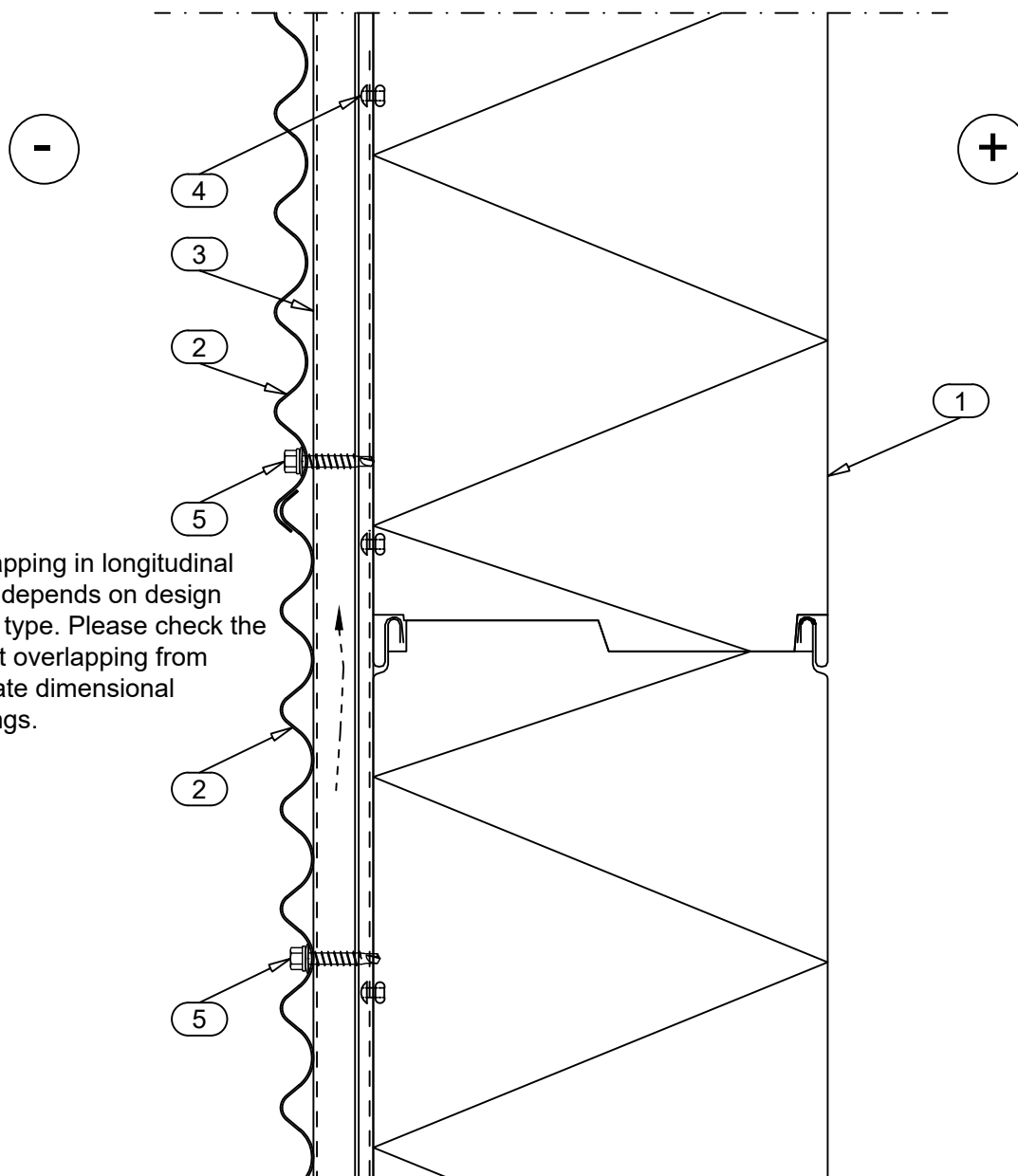
Date 04.10.2011	Rev. date 08.07.2019	Work nr.	Drw. nr. DPDE-1	Rev. 2
Drawn by Ruukki	Rev. B			
Scale 1:2.5	Building		File nr.	



1. PREFABRICATED EXTERNAL WALL ELEMENT
2. DESIGN PROFILE
3. SUPPORT STUD CA1SS1
4. SCREW S3H55022L02S4B
5. SCREW S3H4825D4S9.5
6. HORIZONTAL BRACE STRIP (for fastening studs)

THE FINAL EXECUTION ALWAYS
ACCORDING TO INSTRUCTION
OF THE STRUCTURAL DESIGNER

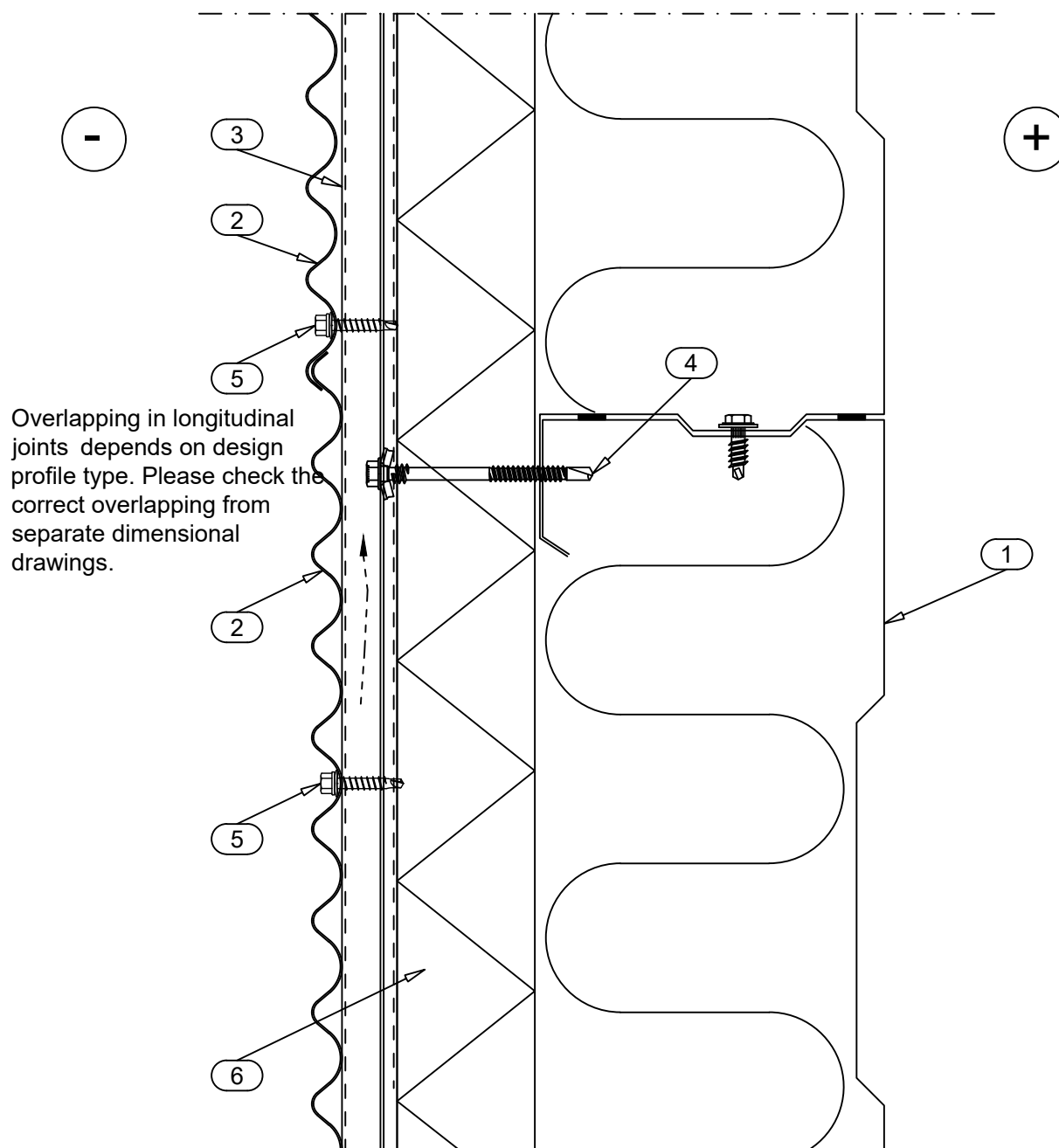
Date 04.10.2011	Rev. date 08.07.2019	Work nr.	Drw. nr. DPDE-2	Rev. 2
Drawn by Ruukki	Rev. B			
Scale 1:2.5	Building		File nr.	



1. SANDWICH PANEL
2. DESIGN PROFILE
3. SUPPORT STUD CA1SS1
4. RIVET (e.g. SFS intec ATC-D-3.2x8.0)
5. SCREW S3H4825D4S9.5

THE FINAL EXECUTION ALWAYS
ACCORDING TO INSTRUCTION
OF THE STRUCTURAL DESIGNER

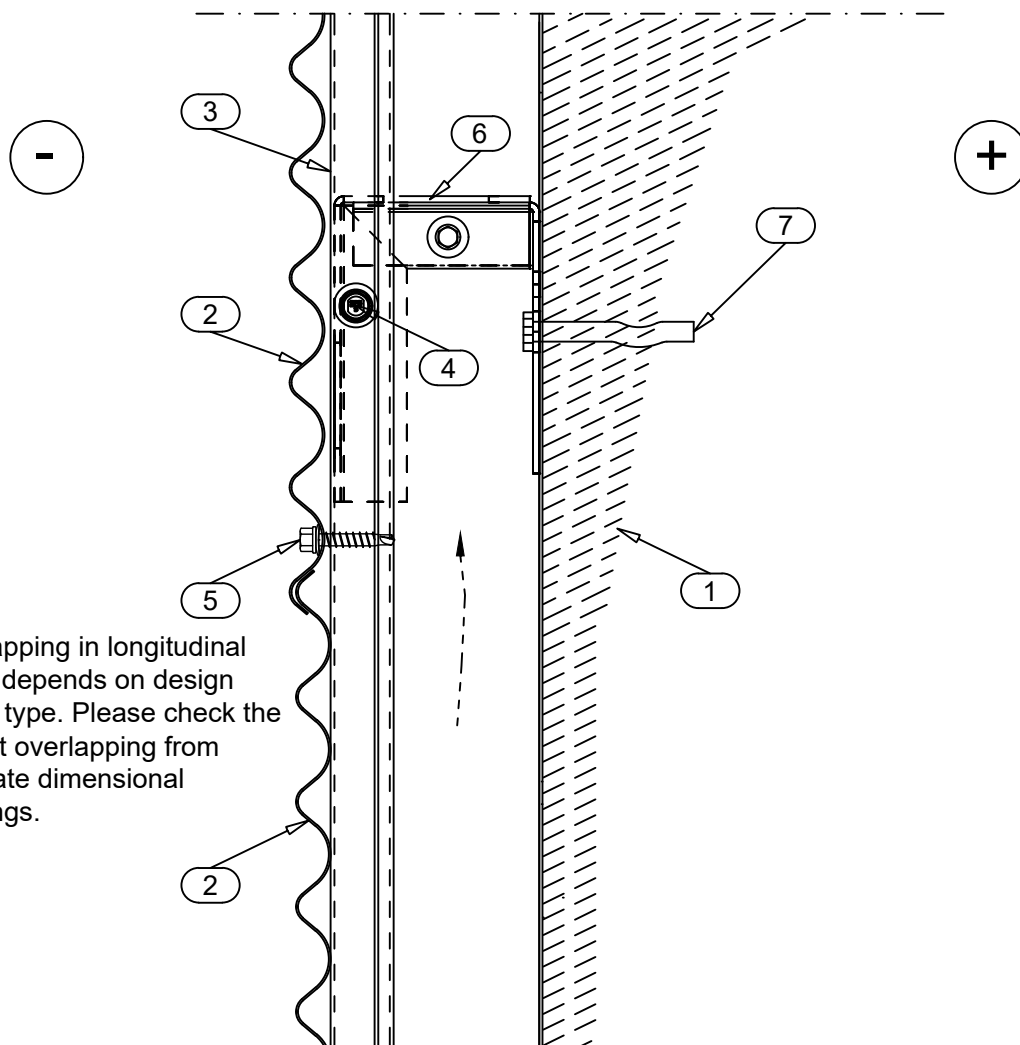
Date 04.10.2011	Rev. date 08.07.2019	Work nr.	Drw. nr. DPDE-3	Rev. 2
Drawn by Ruukki	Rev. B			
Scale 1:2.5	Building		File nr.	



- 1. LINER TRAY
- 2. DESIGN PROFILE
- 3. SUPPORT STUD CA1SS1
- 4. SCREW (e.g. SFS intec SDT5-S19-5.5x77)
- 5. SCREW S3H4825D4S9.5
- 6. HARD MINERAL WOOL (wind barrier)

THE FINAL EXECUTION ALWAYS
ACCORDING TO INSTRUCTION
OF THE STRUCTURAL DESIGNER

Date 04.10.2011	Rev. date 08.07.2019	Work nr.	Drw. nr. DPDE-4	Rev. 2
Drawn by Ruukki	Rev. B			
Scale 1:2.5	Building	File nr.		

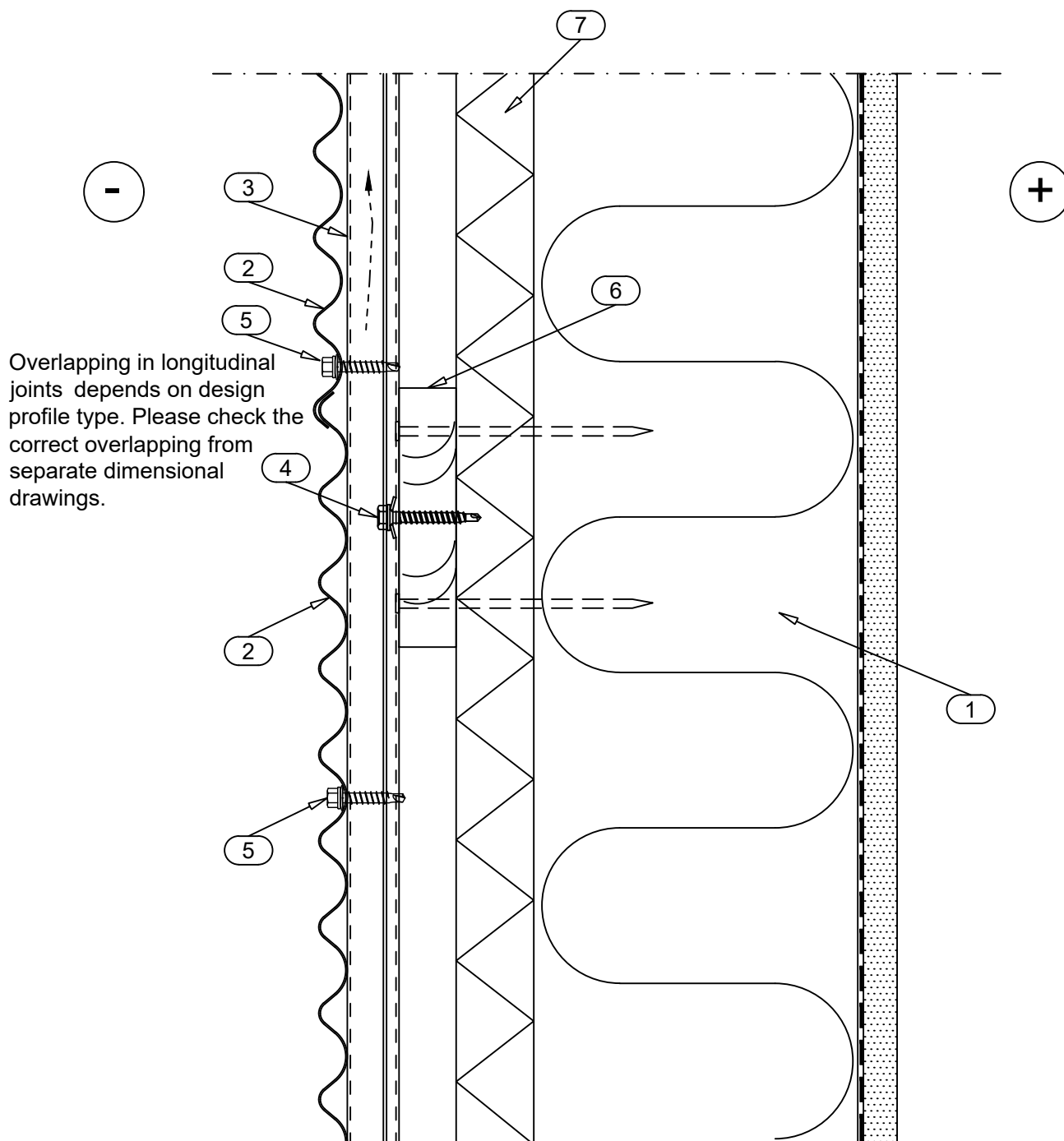


Overlapping in longitudinal joints depends on design profile type. Please check the correct overlapping from separate dimensional drawings.

1. CONCRETE
2. DESIGN PROFILE
3. SUPPORT STUD CA1SS1
4. SCREW S3H55022L02S4B
5. SCREW S3H4825D4S9.5
6. ADJUSTABLE FASTENER CAFRSP
7. SPIKE (e.g. SFS intec DT-6.3x51)

THE FINAL EXECUTION ALWAYS
ACCORDING TO INSTRUCTION
OF THE STRUCTURAL DESIGNER

Date 04.10.2011	Rev. date 08.07.2019	Work nr.	Drw. nr. DPDE-5	Rev. 2
Drawn by Ruukki	Rev. B			
Scale 1:2.5	Building		File nr.	



- 1. TIMBER STUDS
- 2. DESIGN PROFILE
- 3. SUPPORT STUD CA1SS1
- 4. S3H48035WA4
- 5. SCREW S3H4825D4S9.5
- 6. WOODEN BATTEN
- 7. HARD MINERAL WOOL (wind barrier)

THE FINAL EXECUTION ALWAYS
ACCORDING TO INSTRUCTION
OF THE STRUCTURAL DESIGNER